



## **2025 Romantic Rhine River Cruise with Swiss Alps & Lake Como October 9-21, 2025**

Our Rhine River Cruise getaway for 2025 will deliver you History, Castles, and Cathedrals. Explore one of Europe's best-loved rivers, the Rhine. Discover the turreted fortresses, grand cathedrals, historic cities, medieval towns and spectacular scenery of the Middle Rhine, which is a UNESCO World Heritage Site. Sip the region's renowned white wines, the roots of its terraced vineyards reaching back to Roman times. Savor the various culinary traditions of Alsace. Before we sail, we'll get an exclusive land touring experience starting in Lake Como Italy, with its mediterranean climate and breathtaking mountain lake views. Then, before we board our cruise ship, a little taste of the Swiss Alps and Lucerne. A breathtaking view of these magnificent mountains from Mount Pilatus, and a visit of the Historic Lucerne Bridge and Heart of a Lion. Then it's cruising time as we sail from Basel, Switzerland to Amsterdam, Holland. A journey rich in landscape, beauty, and culture. During the cruise, you'll have an inclusive, destination-focused experience, with complimentary shore excursions at every port of call, enrichment lectures and destination performances, food and drinks that represent the culture and region, all onboard a luxurious ship with only 166 guests. This is a once in a lifetime experience, and it's all-included on our special departure. Your package includes the 3-night stay in Lake Como, a 1-night stay in Lucerne, and your 7-night Rhine Cruise. Along with your trip being hosted with a MSSU Southern Safari Representative, and travel arrangements managed by Alumni Ken Mayer with GalaxSea Cruises & Tours. It is with great pleasure we say *Willkommen an Bord!*

### **Southern Safari Group Package Includes:**

*Transportation from MSSU to departure airport  
Roundtrip Air Transportation (coach seating) and all ground transfers in Europe  
3-night hotel stay in Lake Como (pre-cruise); and 1-night stay in Lucerne (pre-cruise)  
(7) Night Rhine Cruise onboard the Avalon Envision  
Included Shore Excursions during the River Cruise  
Sightseeing during the Land Touring stays  
Onboard ship meals, including regional specialties  
24-hour Specialty Coffee, Teas, & Bottled Water  
Beer, Wine, and Soft Drinks with your shipboard meals  
Enrichment Lectures & Destination Performances  
Panoramic View Suites available on this sailing  
Free Onboard Wi-fi; Taxes, Fees, and Gratuities Included*

### **Payment Schedule:**

Your deposit is \$1000 per person, at time of joining, plus travel insurance costs. Another payment installment of \$1000 per person will be due in April. Your final balance will be due by July 7, 2025. **Contact Ken Mayer @ GalaxSea Cruises & Tours, before the cruise space sells out!**



## 2025 Romantic Rhine River Cruise with Swiss Alps & Lake Como October 9-21, 2025

### Southern Safari Package prices / room options

rates are per person, based on double occupancy

Standard room, room Category E or D	\$6687 per person
Panorama Suite, room Category B	\$8236 per person
Panorama Suite, room Category A	\$8336 per person
Panorama Suite, room Category P	\$8386 per person

**For single pricing, please call 417-451-5468**

**Not included are:** passport fees; meals and beverages not listed or those that are not included on the cruise; additional sightseeing not included with the itinerary or cruise; airline seating upgrades; travel insurance; tipping outside the cruise; and any souvenirs/items of personal nature. Most airlines include 1 check-in bag for free, and 1 carry-on bag, per person. Any excess luggage or excess weight may have a charge.

### Summary of travel itinerary

<b>Thursday, October 9<sup>th</sup></b>	Travel to Lake Como, overnight flight (flight schedules TBA).
Friday, October 10 <sup>th</sup>	Flight arrival in Milan, Italy. Transfer to Lake Como hotel, overnight
Saturday, October 11 <sup>th</sup>	Lake Como walking tour, and Lake Como Boat ride, overnight again same hotel.
Sunday, October 12 <sup>th</sup>	Day at leisure in Lake Como, overnight same hotel.
Monday, October 13 <sup>th</sup>	Travel to Lucerne, Switzerland, enjoy a guided walking tour, overnight Lucerne.
Tuesday, October 14 <sup>th</sup>	Excursion to Mt. Pilatus, then onboard your Suite Ship in Basel, Switzerland (cruise begins)
Wednesday, October 15 <sup>th</sup>	Breisach, Germany with excursions to Black Forest.
Thursday, October 16 <sup>th</sup>	Strasbourg, France. Included sightseeing with Avalon.
Friday, October 17 <sup>th</sup>	Mainz, Germany with excursions to Heidelberg Castle.
Saturday, October 18 <sup>th</sup>	Rudesheim & Scenic Rhine Gorge Cruising, and overnight in Koblenz.
Sunday, October 19 <sup>th</sup>	Cologne, Germany. Included sightseeing with Avalon.
Monday, October 20 <sup>th</sup>	Amsterdam, Holland. Included sightseeing with Avalon.
Tuesday, October 21 <sup>st</sup>	Depart ship, and return back home (flight schedules TBA).

*For more details on each day, please see the Avalon River Cruise Travel Packet*

### Airline Flights

By traveling with our group from Joplin, your airport transportation and airfare is included in the costs. If you need to travel from another city, please contact GalaxSea to make those arrangements. Our pricing includes the air travel in coach/main cabin seating, but there are some upgrading options. Please make your seating requests asap, so those arrangements can be secured. While pricing for air tickets changes constantly, we would estimate the following upgrade costs:

Extra legroom coach seating is approximately \$1500 per person additional

Premium Economy seating is approximately \$3500 per person additional.

Business Class seating will be approximately \$6500 per person additional.

Select your requests on the reservation form, or contact GalaxSea for more details.

**210 N Business 49, Neosho, MO 64850**  
**417-451-5468, [ken@galaxseaonline.com](mailto:ken@galaxseaonline.com)**

## How Do you Sign Up?

Reservations are being accepted now and are sold first-come, first-served. Space is limited. On these river cruises there isn't a block of rooms for us to sell, all of the rooms are open to everyone, everywhere. Please book your room soon to secure your space. Check, cash, or most major credit cards are accepted for your initial non-refundable deposit of \$1000 per person, plus travel insurance. Passport names are required, along with date of birth, telephone number, and mailing address. For your convenience, a reservation form is enclosed for you to complete and send with your payment. You may also copy this flyer for other persons you may know who are interested. An online reservation form is also available, and a website page of this information. Additional payment installments of \$1000 per person are due in April (2025). Your final balance will be due by July 1, 2025.

## Travel Insurance:

Travel insurance costs will vary on this trip as there could be different programs to consider for you. Because your initial deposit is non-refundable, we encourage you to consider adding insurance soon. We will provide you a quote or quote options that would be the best fit for your package.

## Passport Requirements:

You must have a valid passport for this cruise. If you do not have a passport, please plan to get one soon. If you already have a passport, please make sure it will not expire prior to March 22, 2026. If you are not a US Citizen, please contact GalaxSea Cruises & Tours for the required documents.

## Need More Information:

If you have further questions or concerns, please contact Ken Mayer with GalaxSea @ [ken@galaxseaonline.com](mailto:ken@galaxseaonline.com). You can also call his office at 417-451-5468. You can contact Melissa Thompson-Holt with Missouri Southern at [Holtmance-M@mssu.edu](mailto:Holtmance-M@mssu.edu). Don't forget to share this information with your friends, and if you aren't following us on Facebook yet, please like our page at [facebook.com/galaxseacruises](https://facebook.com/galaxseacruises)

## Consumer Terms and Conditions/Fine Print

***GalaxSea Cruises & Tours, and MSSU is acting as a mere agent for the Cruise & Airline SUPPLIERS in selling travel related services, or in accepting reservations or bookings for services that are not directly supplied by GalaxSea or MSSU. Therefore, GalaxSea or MSSU shall not be responsible for breach of contract or any intentional careless actions or omissions on part of such suppliers, which result in any loss, damage, delay, or injury to you or your companions or group members. Unless the term "guaranteed" is specifically stated in schedule, or handling of personal effects.***

***GalaxSea or MSSU shall not be responsible for any injuries, damages or losses caused to any traveler in connection with terrorist activities, social or labor unrest, mechanical or construction failures or difficulties, diseases, local laws, climatic conditions, abnormal conditions or developments, or any other actions, omissions, or conditions outside of their control. This party is not responsible for cancellation of any service/s and or refunds from any supplier or carrier that may cease operations.***

***Travelers are hereby warned of the above risks as well as possible travel industry bankruptcies and medical and climatic disruptions, and is advised to obtain appropriate insurance coverage against them. Traveler's retention of tickets, reservations, or bookings after issuance shall constitute consent to the above and an agreement on his/her part and is expected to convey the contents hereto to his/her travel companions or group members.***

## Cancellation Penalties/Fees:

After deposit	Deposit is non-refundable
After June 14, 2024	35% of total, plus any non-refundable services
After July 9, 2024	50% of total, plus any non-refundable services
After August 9, 2024	80% of total, plus any non-refundable services
After September 9, 2024	Full Penalty

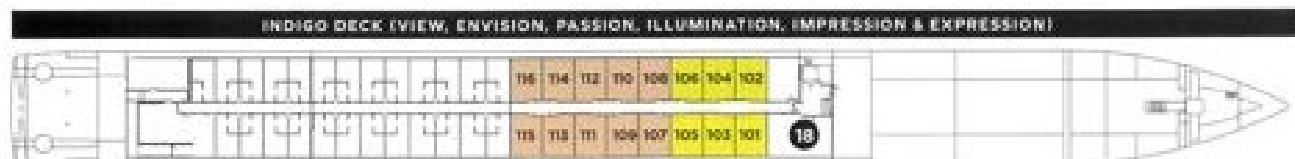
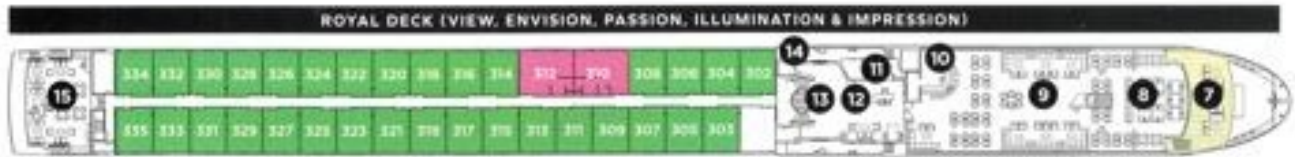
Travel Protection Insurance is available for purchase on your package. Cancellation fees are charged regardless of your reason to cancel. We suggest you purchase a premium soon. A customized insurance quote will be provided to you within 7 days of your deposit so you can understand your options. Whatever policy you choose, coverage will not go into effect until your premium is paid. Once purchased this premium is non-refundable. We will be in touch with you to make sure you have the best insurance plan for your vacation, shortly after receiving your reservation deposit.

**210 N Business 49, Neosho, MO 64850  
417-451-5468, [ken@galaxseaonline.com](mailto:ken@galaxseaonline.com)**

# AVALON EUROPEAN SUITE SHIPS®

**AVALON VIEW™ (2022), AVALON ENVISION™ (2019), AVALON PASSION® (2016),  
AVALON ILLUMINATION® (2014), AVALON IMPRESSION™ (2014),  
AVALON EXPRESSION® (2013), AVALON VISTA® (2012), AVALON PANORAMA® (2011)**

Passengers: 166 | Crew Members: 47 | Length: 443 ft. | Decks: 4  
Royal Suites: 2 (300 sq. ft.) | Panorama Suites™: 65 (200 sq. ft.) | Deluxe Staterooms: 16 (172 sq. ft.)



## DECK PLAN

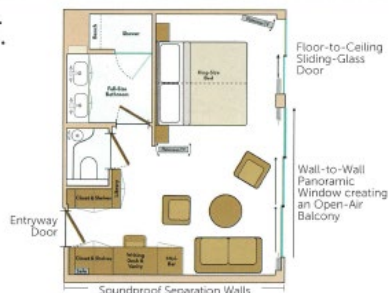
- |                      |                     |                         |
|----------------------|---------------------|-------------------------|
| 7 Observation Lounge | 10 Bar              | 15 Club Lounge          |
| 8 Panorama Bistro    | 11 Guest Services   | 16 Galley               |
| 9 Panorama Lounge    | 12 Adventure Center | 17 Panorama Dining Room |
|                      | 13 Lobby            | 18 Fitness Center       |
|                      | 14 Elevator         |                         |

## CATEGORIES

- ROYAL SUITE** Royal Deck | Royal Suites
- CAT. P** Royal Deck | Panorama Suites
- CAT. A** Sapphire Deck Forward | Panorama Suites
- CAT. B** Sapphire Deck Aft | Panorama Suites
- CAT. D** Indigo Deck Aft | Deluxe Staterooms
- CAT. E** Indigo Deck Forward | Deluxe Staterooms

### ROYAL SUITES

**300 SQ. FT.**  
ROYAL DECK



### PANORAMA SUITES™

**200 SQ. FT.**  
ROYAL & SAPPHIRE DECKS  
Category B, A, P



### DELUXE STATEROOMS

**172 SQ. FT.**  
INDIGO DECK  
Category D & E



**210 N Business 49, Neosho, MO 64850**  
**417-451-5468, [ken@galaxseaonline.com](mailto:ken@galaxseaonline.com)**

# Southern Safari 2025 Rhine River Cruise

## RESERVATION FORM

Passenger Name(s) \_\_\_\_\_ Date of Birth \_\_\_\_\_ Gender \_\_\_\_\_ Daytime Telephone \_\_\_\_\_  
(Name spelling should match your passport)

1. \_\_\_\_\_

2. \_\_\_\_\_

Mailing Address: \_\_\_\_\_

Home Phone: \_\_\_\_\_ Work Phone: \_\_\_\_\_ Cell Phone: \_\_\_\_\_

Email Address: \_\_\_\_\_ Home or Work

Room type/category Requested \_\_\_\_\_ Air City if not with Group \_\_\_\_\_

Are you sharing your room with anyone not listed above? \_\_\_\_\_

Do you wish to upgrade your airline seating? YES NO

\_\_\_\_\_ Extra Legroom Coach \_\_\_\_\_ Premium Economy \_\_\_\_\_ Business Class

Travel Insurance (Yes or No) \_\_\_\_\_

Deposit Amount Enclosed: Deposit (\$1000 per person) \_\_\_\_\_

Total Enclosed \_\_\_\_\_

**Please make checks payable to GalaxSea Cruises & Tours.**

OR CHARGE TO YOUR CREDIT CARD:

Credit Card Number: \_\_\_\_\_ Sec Code \_\_\_\_\_ Expiration \_\_\_\_\_

Name on Card: \_\_\_\_\_ Signature: \_\_\_\_\_

Credit Card Billing Address: \_\_\_\_\_

ANY SPECIAL REQUESTS OR NEEDS

---

---

---

**Please complete form and send to GalaxSea Cruises & Tours**

**210 N Business 49, Neosho, MO 64850  
417-451-5468, [ken@galaxseaonline.com](mailto:ken@galaxseaonline.com)**