

Fact Book

2014



Missouri Southern State University

Missouri Southern State University

Fact Book - 2014

Compiled by

CENTER FOR ASSESSMENT & INSTITUTIONAL RESEARCH

**3950 E. Newman Road
Plaster Hall, Room 321
Joplin, MO 64801
Phone: (417) 625-9772
Fax: (417) 659-4457**

<http://www.mssu.edu/center-assessment-institutional-research/>

MSSU FACT BOOK-2014

Preface

The Center for Assessment & Institutional Research is pleased to share with you the Missouri Southern State University *2013 Fact Book*. The *Fact book* contains historical, general information, and statistical data on a broad range of topics pertaining to the University. The *Fact Book* is designed to facilitate campus planning and data-driven decision making processes. It provides answers to the most frequently asked questions about MSSU.

The *Fact Book* presents a summary of facts about students, faculty, staff, and most University operations. We hope that you find the information presented in this Fact Book enlightening and expedient. The Fact Book will be updated annually by the Center for Assessment & Institutional Research. If you have comments, questions, or suggestions for improving subsequent editions of the *Fact Book*, please contact the Center for Assessment & Institutional Research.

We sincerely appreciate the cooperation and diligence of all campus contributors. The *Fact Book* is also available through the internet at www.mssu.edu/center-assessment-institutional-research.

Bob Adebayo, Ph. D.
Director

Janette Van De Mark
Senior Analyst and Reporting
Specialist

Center for Assessment & Institutional
Research
3950 E. Newman Road
Plaster Hall, Room 321
Joplin, MO 64801
Phone: (417) 625-9772
Fax: (417) 659-4457



Table of Contents

General Information8

- General University Timeline..... 9
- University Mission, Vision and Value..... 10
- Institutional Accreditation..... 11
- Professional Memberships 12
- Missouri Southern State University Peer Institutions 13

University Governance and Administration14

- University Organizational Chart..... 15
- University Board of Governors, Past Presidents and Administrators 16
- University Academic Deans and Faculty Senate Officials 17

New Student Information.....18

- Fall Application, Acceptance & Enrollment 19
- Percent of Fall First-Time Students Admitted & Enrolled 19
- Percent of Fall First-Time Transfer Students Admitted & Enrolled..... 19
- Fall First-Time Student Profile 20
- Fall First-Time Transfer Student Profile..... 21
- Fall First-Time Transfer Students From Missouri Institutions 22
- Fall First-Time Transfer Students From State of Institution of Origin..... 24
- ACT Score Range of Fall First-Time Students..... 25
- High School Rank of Fall First-Time Students..... 26
- Percent of High School Rank of First-Time Students, Fall 2014 26
- High School GPA Range of Fall First-Time Students..... 27
- Percent of First-Time Students by High School GPA Range, Fall 2014..... 27
- County of Origin of Fall First-Time Students at First Application..... 28
- County of Origin Map of Fall First-Time Students at First Application, Fall 2014 29
- State of Origin of Fall First-Time Students at First Application 30
- Country of Origin of Fall First-Time Students at First Application 31
- Percent of First-Time Students by Geographic Origin at First Application, Fall 2014 31

Top Ten Feeder High Schools to MSSU 32

Fall First-Time Students by School 33

Percent of First-Time Students by School, Fall 2014 33

Fall First-Time Students by Department..... 34

Fall First-Time Transfer Students by School..... 35

Percent of First-Time Transfer Students by School, Fall 2014..... 35

Fall First-Time Transfer Students by Department 36

Enrollment.....37

Ten Year Enrollment Trends..... 38

Differences in 1, 5 & 10 Year Enrollment Trends..... 38

Fall Undergraduate Student Profile..... 39

Fall Graduate Student Profile..... 40

Fall Enrollment by Race/Ethnicity and Gender 41

Fall Enrollment by Class Level..... 42

Place of Origin at First Application by County, Fall 2010-2014 Enrollment..... 43

Place of Origin at First Application by State, Fall 2010-2014 Enrollment..... 44

Place of Origin at First Application Map, Fall 2014 Enrollment..... 45

Place of Origin at First Application by Country, Fall 2010-2014 Enrollment..... 46

Fall Undergraduate Enrollment by School/Department..... 47

Spring Undergraduate Enrollment by School/Department 48

Summer Undergraduate Enrollment by School/Department 49

Fall, Spring & Summer Graduate Enrollment by School/Department..... 50

Spring, Summer & Fall Residency 51

Credit Hour Production.....52

Total Annual Credit Hours, Enrollment and Full-Time Equivalent..... 53

Fall, Spring and Summer Credit Hours..... 54

Fall Undergraduate Credit Hours by School/Department..... 55

Spring Undergraduate Credit Hours by School/Department..... 56

Summer Undergraduate Credit Hours by School/Department..... 57

Fall, Spring and Summer Graduate Credit Hours by School/Department..... 58

Fall Cumulative GPA by Student Classification.....	59
Fall Cumulative GPA by Student Classification.....	59
Student Grade Distribution by Class Level.....	60
Percentage of A and B Grades by Level.....	61
Degrees Conferred	62
Degrees and Certificates Offered as of Fall 2014.....	63
Number of Degrees Conferred by Program and Award Level, (Smr 2013, Fall 2014& Spg 2014)...	65
Number of Undergraduate Degrees Awarded by School, (Fall, Spring & Summer).....	66
Number of Undergraduate Degrees Awarded by Department, (Fall, Spring & Summer).....	67
Number of Graduate Degrees Awarded by Department & School, (Fall, Spring & Summer).....	68
Retention and Graduation	69
Fall First-Time, Full-Time Bachelor’s Seeking Students Retention Rates.....	70
Fall First-Time Transfer Students Retention Rates.....	71
Fall First-Time, Full-Time Bachelor’s Seeking Graduation Rates	72
Faculty and Staff	73
Faculty Profile.....	74
Full-Time Faculty by Rank and Gender, Fall 2013	75
Full-Time Faculty by Highest Degree and Gender, Fall 2013.....	76
Average Full-Time Faculty Salary by Rank	77
Faculty/Staff by Gender and Race/Ethnicity as of November 1	78
Teaching and Learning.....	79
Number of Fall Class Sections with Undergraduates Enrolled.....	80
Undergraduate Student to Faculty Ratio.....	81
Undergraduate Student and Faculty FTE.....	81
Student Classification by Semester, Courses Taken and Course Credit Hours	82
Pre- and Post ETS Proficiency Profile Total Score Mean, 2007 - 2014.....	83
Senior ETS Proficiency Profile Total Score Mean Comparison by Year.....	83

University Financial Resources84

- Sources of Core Revenues, FY 2013 85
- Percent of Sources of Core Revenues, FY 2013 85
- Sources of Core Expenses, FY 2013..... 86
- Percent of Sources of Core Expenses, FY 2013 86
- Distribution of Financial Aid by Award Type, 2012-2013..... 87
- Average Amount of Financial Aid by Award Type, 2012-2013 87
- Distribution of Financial Aid by Loan Source, 2012-2013..... 88
- Average Amount of Financial Aid by Loan Source, 2012-2013 88
- Undergraduate Pricing Information 89

Facilities90

- Campus Housing Statistics..... 91
- Percent in Campus Housing by Academic Year..... 91
- Campus Map..... 92
- Campus Building Statistics..... 93

Library.....94

- Library Services, Collections & Personnel, FY 2012-2013..... 95

Foundation96

- Missouri Southern Foundation 2013 Financial Report..... 97

Athletics98

- Athletic Statistics 99

Glossary of Terms100

General Information



General University Timeline

1937 - Joplin Junior College is established under the supervision of the Extension Division of the University of Missouri and held in the Joplin High School Joplin and H.E. Blaine is named first Dean.

1964 - The college adopts the official name of "Jasper County Junior College" under the direction of the Junior College District of Jasper County governed by a Board of Trustees.

1965 – Legislation is passed creating the four year institution known as Missouri Southern College.

1967 - The new 320-acre campus is opened under the direction of the first appointed president, Dr. Leon C. Billingsly.

1969 – The college awarded first baccalaureate degrees to 198 students.

1972 – The college is renamed Missouri Southern State College.

1977 - Missouri Southern State College becomes a state assisted four-year college and part of the State of Missouri's higher education system gaining full state funding.

1978 – Dr. Floyd Belk serves as interim President until Dr. Donald C. Darnton assumes the presidency in 1979.

1982 - Dr. Julio Leon is appointed the president.

1992 - Richard M. Webster Communications and Social Science Building is opened.

1995 - Legislation is passed directing MSSC to add international emphasis to its mission, and the newly constructed Student Life Center is complete.

2003 - Legislation is passed renaming the college to Missouri Southern State University-Joplin.

2006 - The first group of students receives their master's degrees.

2007 - Dr. Terri Agee is selected as interim president after Dr. Julio Leon announces his retirement.

2008 - Dr. Bruce W. Speck is named president.

2009 - The George S. Beimdiek Recreation Center and Willcoxon Student Health Center officially opened.

2010 - The newly-renovated Mission Hills Mansion opens as the Ralph L. Gray Alumni Center along with the state-of-the-art Health Science building.

2012 - The university begins a year-long celebration of its 75th anniversary.

2014 - Dr. Alan D. Marble is appointed president after serving as interim.

University Mission, Vision and Value Statement

Missouri Southern State University is a state-supported, comprehensive university offering programs leading to undergraduate and graduate degrees. Central to our mission is a strong commitment to international education, liberal arts, professional and pre-professional programs, and the complementary relationship that must exist among them to prepare individuals for success in careers and lifelong learning.

Vision

Missouri Southern State University will be recognized as a leader in offering undergraduate and graduate degree programs that foster the total education of each student. In order to remain loyal to the trust given to the University by the people of the State of Missouri, Missouri Southern State University will:

- *fulfill its mission and objectives in an honorable and ethical manner;*
- *periodically review its mission in light of contemporary changes in society and in the needs of the people of Missouri and our communities;*
- *continually assess the effectiveness of its programs in order to ensure their quality and integrity.*

Value

International Education

The University prepares its students to be global citizens in fulfillment of its statewide mission.

Liberal Arts Education

The University commits to a comprehensive program of general education requirements for all students.

Teaching and Learning

The University provides exemplary teaching and learning as supported by scholarship and creative expression.

Student Success

The University commits to the academic, personal and career success of its students.

Community Service

The University leads the intellectual, creative, cultural and economic advancement of our communities.

Institutional Accreditation

Missouri Southern State University is accredited by The Higher Learning Commission

Member-North Central Association

Accreditation Commission for Education in Nursing

Accreditation Council for Business Schools and Programs

American Board of Engineering and Technology

Commission on Collegiate Nursing Education

Commission on Accreditation of Allied Health Education (CAAHEP)

Commission on Dental Accreditation, American Dental Association

Committee on Accreditation for Respiratory Care

Council for the Accreditation of Educator Preparation (CAEP)

Joint Review Committee on Education in Radiologic Technology

Missouri State Board of Nursing

Missouri Department of Elementary and Secondary Education

Missouri Department of Health and Senior Services Bureau EMS

National Accrediting Agency for Clinical Laboratory Science

National Council for Accreditation of Teacher Education (NCATE)

National Environmental Health Science and Protection Council

Peace Officer Standards and Training (P.O.S.T)

Professional Memberships

American Association of Colleges for Teacher Education
American Association of Colleges of Nursing
American Association of State Colleges and Universities
American Dental Education Association
American Institute of Indian Studies
Association to Advance Collegiate Schools of Business
Association of Collegiate Business Schools and Programs
Association of Environmental Health Academic Programs
Association of Governing Boards of Universities & Colleges
Council for the Advancement and Support of Education
Council on Public Higher Education
Institute of International Education
Mid-America Intercollegiate Athletics Association
Missouri Academy of Science
Missouri Association of Colleges for Teacher Education
Missouri Biotechnology Association
Missouri Consortium for International Programs and Studies
Missouri Math and Science Coalition
NAFSA: Association of International Educators
National Collegiate Athletic Association
National League for Nursing Baccalaureate and Higher Degree Programs
North Central Association
The Higher Learning Commission
Southwest Center for educational Excellence

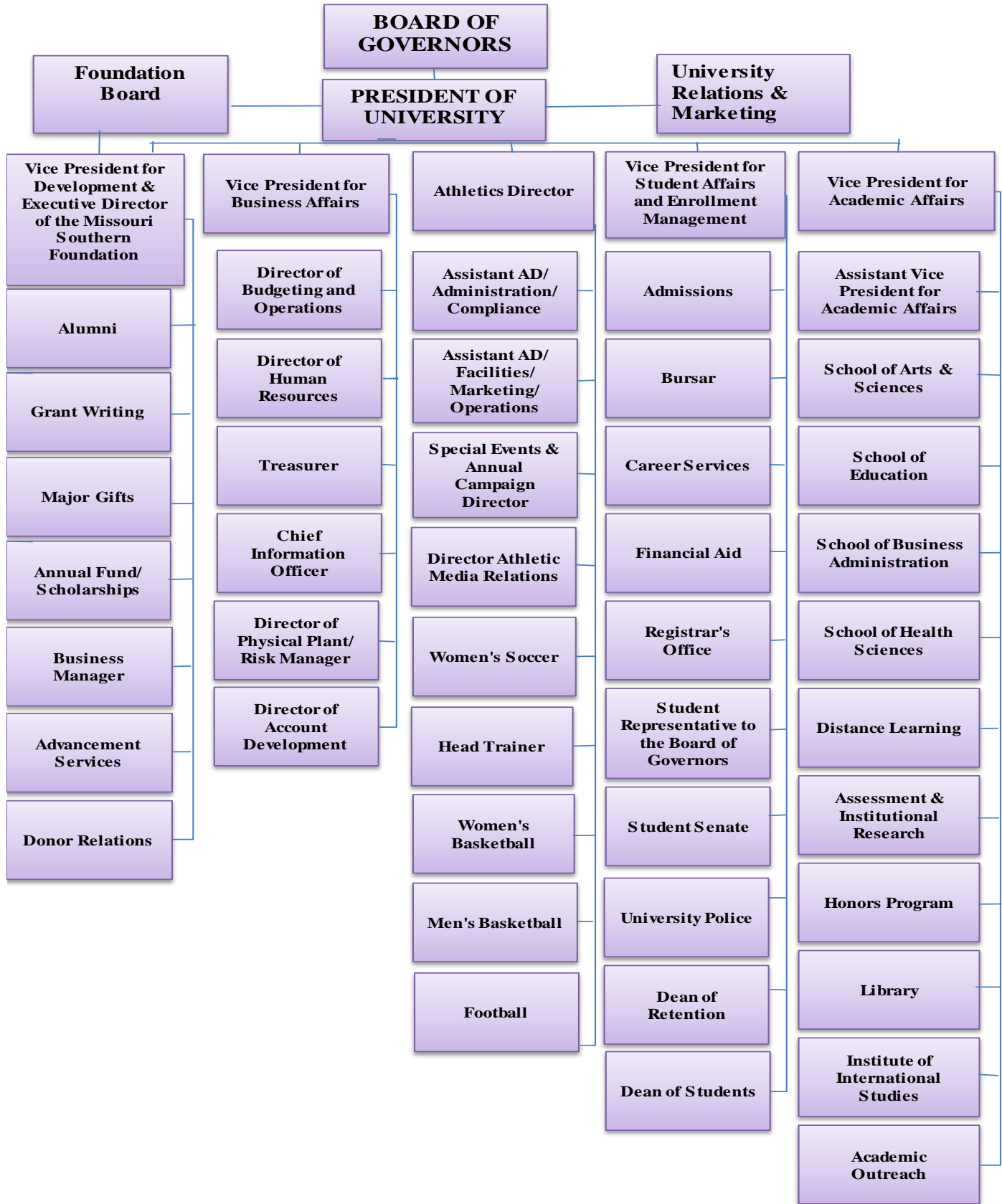
 Missouri Southern State University Peer Institutions

Alabama:	Auburn University at Montgomery Alabama State University University of West Alabama
Arkansas:	Arkansas State University-Mountain Home University of Arkansas at Monticello University of Arkansas at Pine Bluff Southern Arkansas University Main Campus Henderson State University
Idaho:	Lewis-Clark State College
Indiana:	Purdue University-North Central Campus Indiana State University Indiana University Purdue University-Fort Wayne
Louisiana:	Southern University at New Orleans
Maine:	University of Maine at Augusta
Maryland:	University of Maryland-University College
Missouri:	Lincoln University Missouri Western State University Harris-Stowe State University
New Hampshire:	Granite State College
New York:	SUNY Empire State College
Ohio:	Central State University
Oklahoma:	Langston University Southeastern Oklahoma State University Northwestern Oklahoma State University
Texas:	Sul Ross State University The University of Texas at Brownsville Texas A & M University-Kingsville Texas Southern University
Utah:	Utah Valley University
West Virginia:	Concord University

University Governance and Administration



University Organizational Chart



Sources: Vice President for Business Affairs Office

University Board of Governors, Past Presidents and Administrators

Current Board of Governors

Name	Appointed	Term Expires	Residence
Rod Anderson	2003	2009	Monett, MO
Sherry Buchanan	2009	2014	Joplin, MO
Lynn M. Ewing	2010	2015	Nevada, MO
James B. Fleischaker	2011	2017	Joplin, MO
Keith C. Hankins	2013	2016	Stockton, MO
Glenn M. McCumber	2013	2018	Noel, MO
Tracy Flanigan	2014	2019	Carthage, MO

Past Presidents of MSSU

Name	Years Served
Dr. Leon C. Bilingsley	1967 - 1979
Dr. Floyd Belk	1978 – 1979 (Interim President)
Dr. Donald C. Darton	1979 - 1982
Dr. Julio Leon	1982 - 2007
Dr. Terri Agee	2007 - 2008 (Interim President)
Dr. Bruce Speck	2008 - 2013

University Administrators

Title	Name
President of the University	Dr. Alan Marble
Interim Vice President for Academic Affairs	Dr. Pat Lipira
Assistant Vice-President for Academic Affairs	Dr. Crystal Lemmons
Vice President for Business Affairs	Mr. Rob Yust
Vice President of Student Affairs and Enrollment Management	Mr. Darren Fullerton
Vice-President for Development/Executive Director	Ms. JoAnn Graffam
Athletic Director	Mr. Jared Bruggeman

University Academic Deans and Faculty Senate Officials

Academic Deans

School	Name
Plaster School of Business	Dr. John D. Groesbeck
School of Education	Dr. Al Cade
School of Arts and Sciences	Dr. Richard Miller
School of Health Sciences	Dr. Tia Strait

Faculty Senate

Name

Dr. Joy Dworkin, President
 Dr. Michael Garoutte, President Elect
 Ms. Wendy McGrane, Secretary
 Dr. Richard A. Laird, Parliamentarian
 Dr. Tom Schmidt, Member-At-Large
 Dr. Linda Hand, Past-President

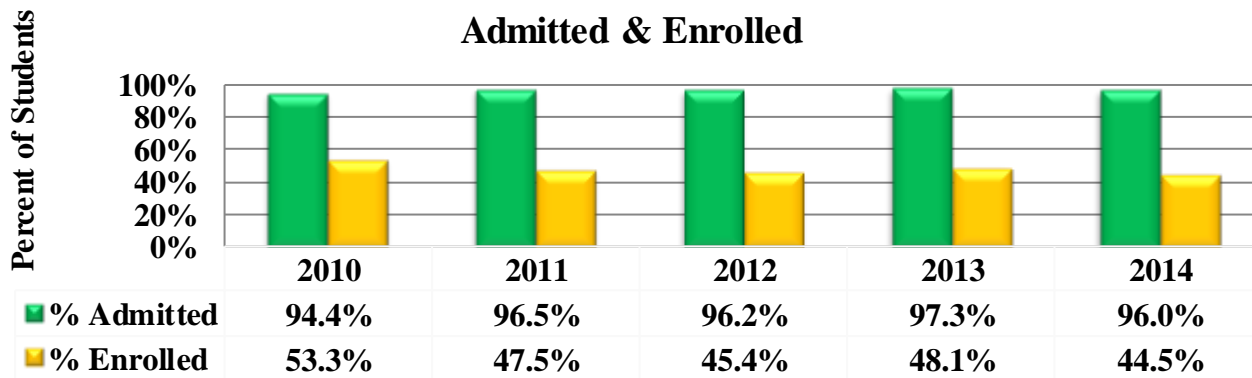
New Student Information



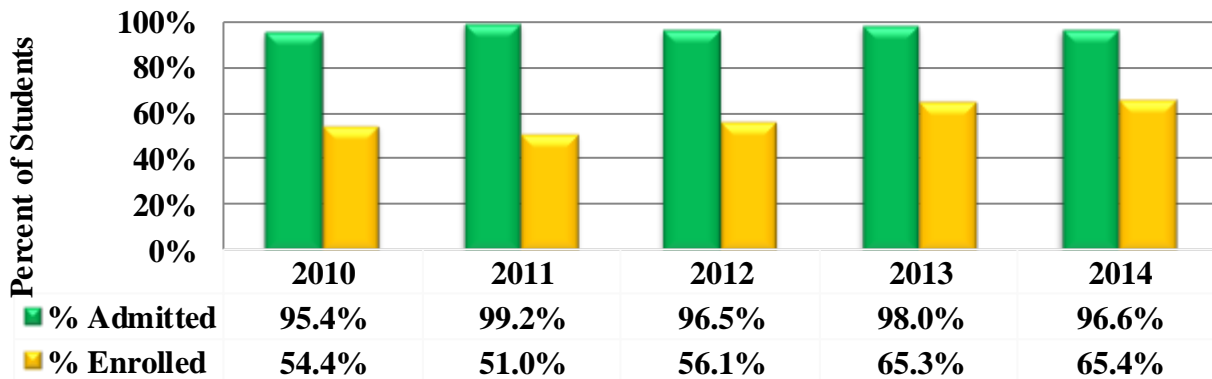
Fall Application, Acceptance & Enrollment

Student Type	2010	2011	2012	2013	2014
First-Time Students					
Applied	1,788	1,691	1,836	1,726	2,002
Admitted	1,687	1,632	1,766	1,679	1,922
Enrolled	900	775	802	808	856
% Admitted	94.4%	96.5%	96.2%	97.3%	96.0%
% Enrolled	53.3%	47.5%	45.4%	48.1%	44.5%
First-Time Transfer Students					
Applied	1,164	1,139	1,073	909	919
Admitted	1,111	1,130	1,035	891	888
Enrolled	604	576	581	582	581
% Admitted	95.4%	99.2%	96.5%	98.0%	96.6%
% Enrolled	54.4%	51.0%	56.1%	65.3%	65.4%

Percent of Fall First-Time Students Admitted & Enrolled



Percent of Fall First-Time Transfer Students Admitted & Enrolled



Sources: IPEDS Institutional Characteristics and Common Data Set

Fall First-Time Student Profile

Race/Ethnicity	2010		2011		2012		2013		2014	
International	12		8	1%	11	1%	10	1%	12	1%
Hispanic/Latino	20	2%	23	3%	32	4%	28	3%	36	4%
American Indian or Alaska Native	34	4%	15	2%	28	4%	24	3%	29	3%
Asian	12	1%	15	2%	15	2%	20	2%	24	3%
Black or African American	52	6%	48	6%	59	7%	66	8%	105	12%
Native Hawaiian or Other Pacific Islander	0	0%	1	0%	1	0%	2	0%	0	0%
White	717	80%	617	80%	613	76%	627	79%	616	73%
Two or more races	4	0%	21	3%	23	3%	2	0%	3	0%
Race and ethnicity unknown	49	6%	27	3%	20	3%	29	4%	31	4%
Total	900	100%	775	100%	802	100%	808	100%	856	100%
Age Breakdown	2010		2011		2012		2013		2014	
17 & younger	10	1%	11	1%	11	1%	15	2%	13	2%
18	548	61%	441	57%	508	63%	528	65%	559	65%
19	179	20%	171	22%	133	17%	119	15%	157	18%
20+ & Unknown	163	18%	152	20%	150	19%	146	18%	127	15%
Total	900	100%	775	100%	802	100%	808	100%	856	100%
Gender	2010		2011		2012		2013		2014	
Male	436	48%	377	49%	373	47%	365	45%	361	42%
Female	464	52%	398	51%	429	53%	443	55%	495	58%
Total	900	100%	775	100%	802	100%	808	100%	856	100%
Enrollment Status	2010		2011		2012		2013		2014	
Full-time	850	94%	718	93%	743	93%	762	94%	803	94%
Part-time	50	6%	57	7%	59	7%	46	6%	53	6%
Total	900	100%	775	100%	802	100%	808	100%	856	100%

Sources: IPEDS Fall Enrollment Surveys

Fall First-Time Transfer Student Profile

Race/Ethnicity	2010		2011		2012		2013		2014	
International	17	3%	11	2%	12	2%	14	2%	22	4%
Hispanic/Latino	24	4%	17	3%	13	2%	29	5%	39	7%
American Indian or Alaska Native	23	4%	19	3%	23	4%	27	5%	24	4%
Asian	9	2%	8	1%	7	1%	15	3%	14	2%
Black or African American	30	5%	23	4%	37	6%	47	8%	36	6%
Native Hawaiian or Other Pacific Islander	1	0%	1	0%	0	0%	0	0%	0	0%
White	467	77%	470	82%	453	78%	431	74%	420	72%
Two or more races	1	0%	6	1%	10	2%	1	0%	4	1%
Race and ethnicity unknown	32	5%	21	4%	26	5%	18	3%	22	4%
Total	604	100%	576	100%	581	100%	582	100%	581	100%
Age Breakdown	2010		2011		2012		2013		2014	
17 & younger	1	0%	1	0%	2	0%	0	0%	1	0%
18	10	2%	9	2%	4	1%	11	2%	8	1%
19	70	11%	63	11%	78	13%	58	10%	63	11%
20+ & Unknown	523	87%	503	87%	497	86%	513	88%	509	88%
Total	604	100%	576	100%	581	100%	582	100%	581	100%
Gender	2010		2011		2012		2013		2014	
Male	254	42%	231	40%	218	38%	247	42%	252	43%
Female	350	58%	345	60%	363	62%	335	58%	329	57%
Total	604	100%	576	100%	581	100%	582	100%	581	100%
Enrollment Status	2010		2011		2012		2013		2014	
Full-time	487	81%	459	80%	478	82%	456	78%	442	76%
Part-time	117	19%	117	20%	103	18%	126	22%	139	24%
Total	604	100%	576	100%	581	100%	582	100%	581	100%

Sources: IPEDS Fall Enrollment Surveys

Fall First-Time Transfer Students From Missouri Institutions					
Institution of Origin	2010	2011	2012	2013	2014
State Less Than Two-Year					
Franklin Technology Center			4	8	3
State Two-Year					
Crowder College	129	132	147	145	136
East Central College	4	4	2	2	2
Jefferson College	6	2	4	3	2
Linn State Technical College			1		
Metropolitan Community College		6	10	10	5
Mineral Area	1	1	2	1	3
Moberly Area Community College	3	3		3	1
North Central Missouri College	2	2		2	4
Ozarks Technical Community College	14	29	22	26	21
St. Charles Community College	1	1	1	1	2
St. Louis Community College Systems	0	5	1	6	4
State Fair Community College	2	2	3	3	3
Three Rivers Community College	6	4	7	1	1
Subtotal Missouri Two-Year	168	191	200	203	184
State Four-Year					
Lincoln University		3	1		
Missouri State University	15	15	10	15	13
Missouri State University-West Plains	4	2		2	
Missouri Univ Science & Tech	3	4		1	2
Missouri Western State University		1	4	2	2
Northwest Missouri State University			4		
Southeast Missouri State University	4	4	3	8	7
Stephens College				1	
Truman State University	2	1			1
University of Missouri-Columbia	5	4	5	2	2
University of Missouri-Kansas City	2	1	4	2	2
University of Missouri-St. Louis				1	1
University of Central Missouri	7	3	4	3	5
Subtotal Missouri Four-Year	42	38	35	37	35
Total Missouri State Institutions	210	229	239	248	222

**Fall First-Time Transfer Students From Missouri Institutions of Origin
(Continued)**

Institution of Origin	2010	2011	2012	2013	2014
Independent Two-Year					
Cottey College	4	2	4	1	
Cox College					1
Wentworth Military Academy	1	2	3		1
Subtotal Independent Two-Year	5	4	7	1	2
Independent Four-Year					
Avila University		3			
Calvary Bible Col & Theol Sem				1	
Central Methodist University	3	3		1	1
College of the Ozarks		2	2		
Columbia College	2		3		1
Cox College	1	1			
Culver-Stockton College		2	1		
Devry University-Kansas City MO	1				
Drury University	3	5	1	4	2
Evangel University	1	1	4		1
Hannibal-La Grange College	1				
Lindenwood University		1			1
Logan College of Chiropractic		1			
Maryville Univ of Saint Louis					1
Messenger College	1	1	1	1	1
Missouri Baptist University					1
Missouri Valley College	2	1	1		
Ozark Christian College	24	15	31	19	24
Park University	4	1			1
Rockhurst University	1		1		
Saint Louis Christian College				1	
St. Louis University		1			1
Southwest Baptist University	3	3	2		3
William Jewell College	2		1		
William Woods College	1				
Subtotal Independent Four-Year	50	41	48	27	38
Total Missouri Independent Institutions	55	45	55	28	40
Total Missouri Institutions	265	274	294	276	262

Fall First-Time Transfer Students From State of Institution of Origin

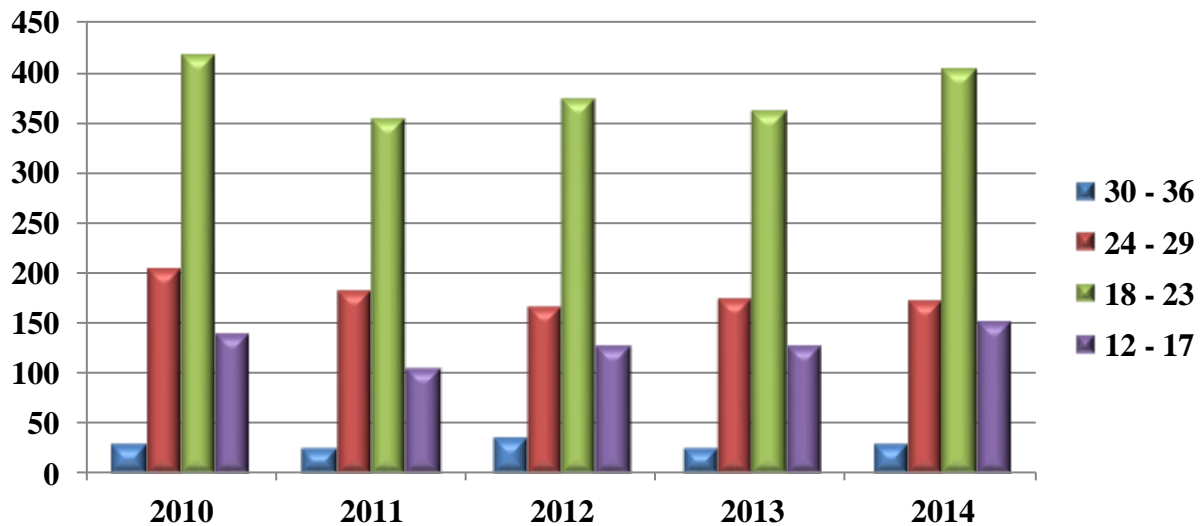
State of Institution of Origin	2010	2011	2012	2013	2014
Alabama	2	3	2	2	1
Alaska			1		
American Samoa					1
Arizona	6	6	5	9	8
Arkansas	37	38	34	45	42
California	8	11	4	13	19
Colorado	5	2	6	4	1
Delaware			1		
Florida	2	4	1	4	4
Georgia	2		4	1	3
Hawaii				2	1
Idaho				1	
Illinois	6	10	7	11	6
Indiana	1	3	2		
Iowa	7	3	5	3	2
Kansas	87	70	93	99	89
Kentucky	2	1	2	2	2
Louisiana			5	1	1
Maine		1			
Maryland					1
Massachusetts					1
Michigan	1	4	1	2	
Minnesota		4	4	6	4
Missouri	265	274	294	276	262
Mississippi	2		3	2	5
Montana					1
Nebraska	2	10	8	3	6
Nevada		2			1
New Jersey		1		1	
New Hampshire					1
New Mexico	1			1	
New York	2			2	2
North Carolina			1		
North Dakota		1		1	
Ohio	1			5	1
Oklahoma	52	43	55	42	70
Oregon		2		2	
Pennsylvania		1		2	2
Rhode Island	1		1		1
South Carolina	2				1
South Dakota		2	1		
Tennessee	5	1	2		2
Texas	14	11	12	7	10
Utah	2	2	2	1	2
Vermont			1		
Virginia	1	2	2	1	1
Washington	4	1	2	3	1
West Virginia				1	
Wisconsin	3	2	2	2	1
Wyoming			2	3	
Unknown	81	61	16	22	25
Grand Total	604	576	581	582	581

Source: EMSAS Fall Enrollment of last institution attended

ACT Score Range of Fall First-Time Students

ACT Score Range	2010	2011	2012	2013	2014
30 - 36	29	25	35	24	28
24 - 29	205	182	166	175	173
18 - 23	419	355	375	362	405
12 - 17	139	105	127	126	150
Less than 12	1	2	0	0	2
No Score	107	106	99	121	98
Total	900	775	802	808	856
MSSU Mean	21.3	21.4	21.6	21.4	21.1
25th Percentile	18	18	18	18	18
75th Percentile	24	24	24	24	24

ACT Score Range of Fall First-Time Students

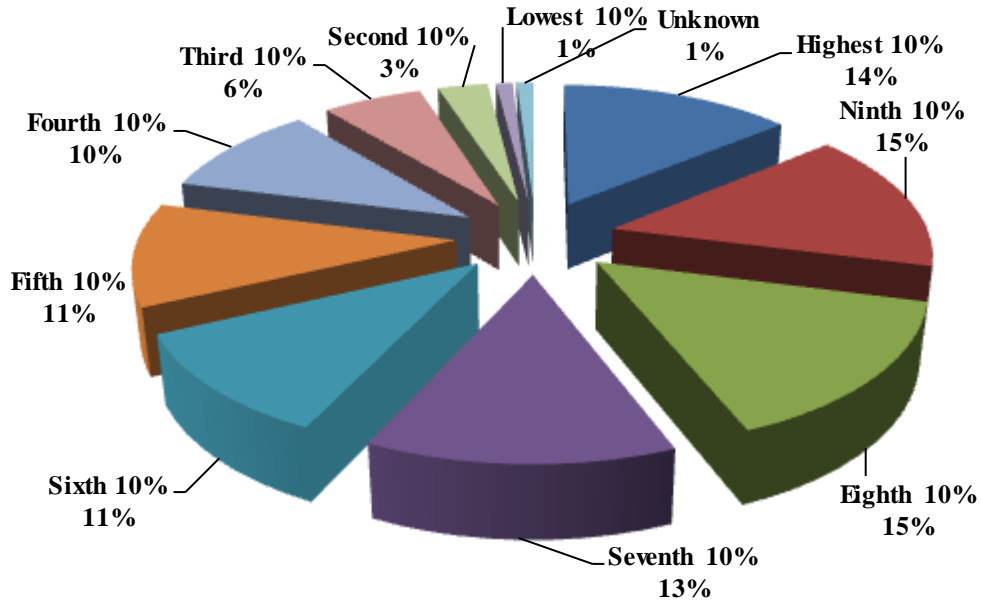


Sources: IPEDS Institutional Characteristics and Common Data Set

High School Rank of Fall First-Time Students

High School Rank	2010		2011		2012		2013		2014	
Highest 10%	104	11%	81	10%	102	13%	98	12%	121	14%
Ninth 10%	133	14%	115	15%	113	14%	107	13%	129	15%
Eighth 10%	129	14%	104	13%	109	14%	104	13%	126	15%
Seventh 10%	98	10%	103	13%	84	10%	129	16%	110	13%
Sixth 10%	105	11%	84	11%	84	10%	93	12%	91	11%
Fifth 10%	123	10%	102	13%	84	11%	89	11%	94	11%
Fourth 10%	84	9%	71	9%	101	13%	67	8%	87	10%
Third 10%	54	6%	59	8%	57	7%	56	7%	55	6%
Second 10%	28	3%	32	4%	34	4%	34	4%	25	3%
Lowest 10%	19	2%	4	1%	9	1%	9	1%	9	1%
Unknown	23	2%	20	3%	25	3%	22	3%	9	1%
Total	900	100%	775	100%	802	100%	808	100%	856	100

Percent Of High School Rank of First-Time Students, Fall 2014

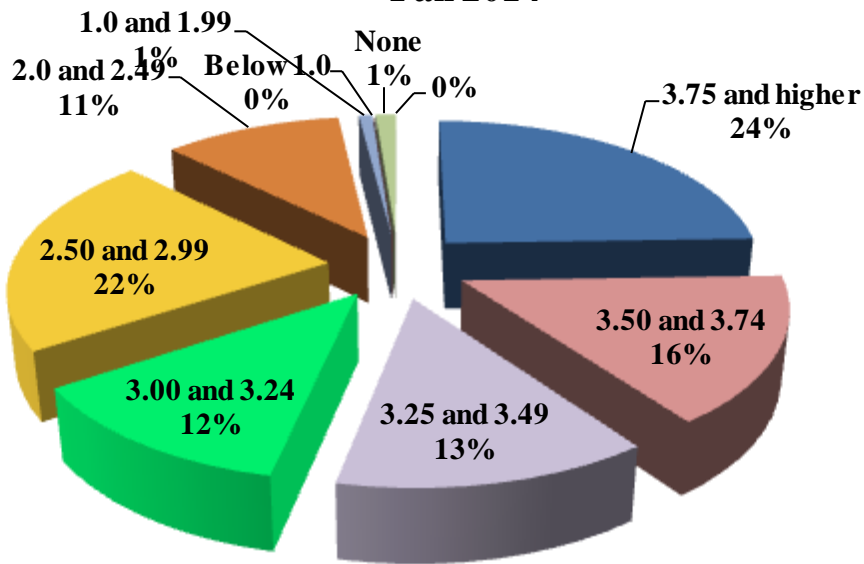


Sources: Common Data Set

High School GPA Range of Fall First-Time Students

HS GPA Range	2010		2011		2012		2013		2014	
3.75 and higher	177	19.7%	147	19.0%	202	25.2%	171	21.2%	210	24.5%
3.50 and 3.74	148	16.4%	133	17.2%	94	11.7%	119	14.7%	133	15.5%
3.25 and 3.49	108	12.0%	94	12.1%	94	11.7%	112	13.9%	114	13.3%
3.00 and 3.24	112	12.4%	104	13.4%	103	12.8%	113	14.0%	106	12.4%
2.50 and 2.99	209	23.2%	186	24.0%	187	23.3%	161	19.9%	185	21.6%
2.0 and 2.49	105	11.7%	81	10.5%	89	11.1%	90	11.1%	92	10.7%
1.0 and 1.99	19	2.1%	10	1.3%	11	1.4%	19	2.4%	6	0.8%
Below 1.0	1	0.1%	0	0.0%	0	0.0%	1	0.1%	0	0.0%
None	21	2.3%	20	2.6%	22	2.7%	22	2.7%	10	1.2%
Total	900	100%	775	100%	802	100%	808	100%	856	100
Mean	3.2		3.2		3.2		3.2		3.3	

Percent of First-Time Students by High School GPA Range, Fall 2014

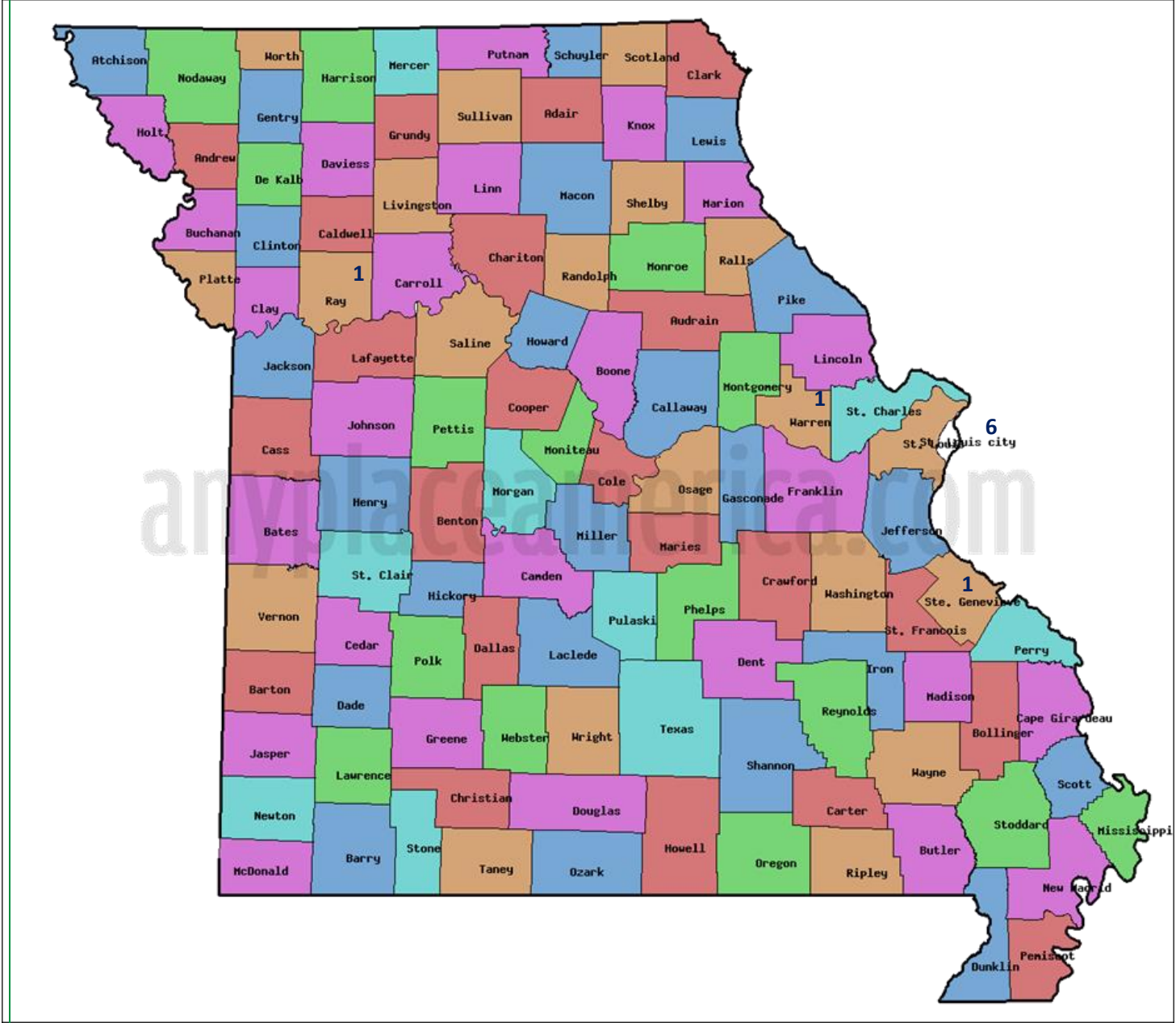


Sources: Common Data Set

County of Origin of Fall First-Time Students at First Application

Missouri County	2010	2011	2012	2013	2014	Missouri County	2010	2011	2012	2013	2014
Adair						Lawrence	27	29	29	30	33
Andrew				1		McDonald	9	13	10	6	12
Audrain				1	3	Madison					1
Barry	25	17	23	25	28	Maries	1		1		
Barton	17	14	5	16	9	Miller	1		2		1
Bates	15	6	3	6	2	Moniteau				1	
Benton		1	2	1		Montgomery				1	
Boone		2	1	1	4	Morgan		1	1	1	1
Buchanan				2	1	New Madrid				1	
Butler				1		Newton	119	97	88	91	103
Caldwell					1	Nodaway	1	1			1
Callaway	1				1	Osage	1	1	1	2	1
Camden	3	2	1	3	1	Ozark			1		1
Cape Girardeau	2	2				Pettis	2		1	2	
Cass	6	8	5	3	18	Phelps	2	2		2	2
Cedar	3	7	5	4	3	Platte	1	3	1	1	
Christian	7	10	13	5	11	Polk	3	3	2	6	1
Clay	3	10	14	3	3	Pulaski	8	8	8		3
Clinton	1		1	1		Putnam				1	
Cole	2	2	1		3	Ralls		1			
Cooper				3		Randolph		1			
Crawford		4			1	Ray		1	1		1
Dade	2	6	8	1	2	St. Charles	4	3	6	2	5
Dallas	2		1	1	1	St. Clair		3		1	
Dent		1				St. Francois		1	2	1	
Douglas	3			1	1	St. Louis	18	18	32	20	26
Franklin	6	4	3		2	Ste. Genevieve					1
Gasconade	1	2				Scott				1	
Greene	18	18	16	16	15	Shannon	1				
Harrison			1	1	1	Stone	9	6	7	2	7
Henry	1			1		Taney	9	4		5	5
Hickory	1			1		Texas	1	3	3	1	1
Howard			1			Vernon	10	11	11	15	13
Howell	5	3		1		Warren	3	1	2		1
Jackson	20	21	20	27	29	Washington	1	1	1		1
Jasper	364	308	334	326	285	Webster	5	1	2	1	2
Jefferson	1	1	3	6	1	Wright	4		1	5	3
Johnson		2	1	1	3	St. Louis (City)	2	2	4	4	6
Knox						Unknown County		1			
Laclede	10	6	7	3	7	Missouri Total	761	673	686	665	668

County of Origin Map of First-Time Students at Time of First Application, Fall 2014



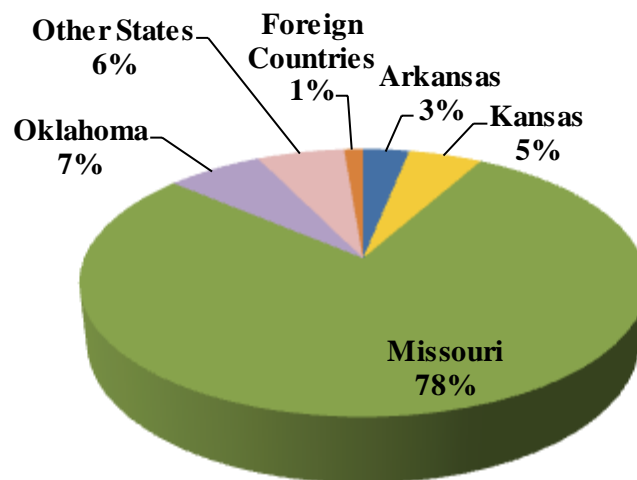
State of Origin of Fall First-Time Students at First Application

State	2010	2011	2012	2013	2014
Alabama		1	1		
Arizona		2			1
Arkansas	41	15	15	21	27
California	2	3	1	2	1
Colorado	1	1			
Florida	3	3	3	5	3
Georgia				2	1
Hawaii	1				1
Illinois	7	2	10	4	33
Iowa	1		2	1	
Kansas	42	25	36	51	43
Kentucky		1			
Louisiana			9	3	1
Maryland			1		
Massachusetts			1	1	
Michigan			1		
Minnesota	3	2	1	2	
Mississippi					1
Missouri	761	673	686	665	668
Montana				1	
Nebraska	1			1	
New Jersey					1
New Mexico				1	1
New York	1				
North Carolina				2	
Ohio		1	1	1	
Oklahoma	19	27	20	28	56
Oregon		1			
Pennsylvania	1				
South Dakota					1
Tennessee	1				
Texas	3	8	4	4	3
Utah					1
Virginia					1
Washington	1			1	1
Wisconsin		1	1		
State Unknown				1	
State Total	889	766	793	797	845

Country of Origin of Fall First-Time Students at First Application

Country	2010	2011	2012	2013	2014
Botswana					
China	2	1	2	1	
Colombia					1
Denmark	1				
Gambia	1		2	2	
Germany	1	1			1
India					1
Mexico					1
Nepal	2				
Netherlands		1			2
New Zealand		1			
Nigeria					2
Saudi Arabia	3	4	3	8	3
Serbia			1		
United Kingdom	1				
Venezuela, Bolivarian Republic of			1		
Zambia		1			
Country Total	11	9	9	11	11
Total Enrollment	900	775	802	808	856

Percent of First-Time Students by Geographic Origin at First Application, Fall 2014



Sources: Census data & ODS Banner Query on 8/13/2014

Top Ten Feeder High Schools to MSSU

Fall 2014	
High Schools	Count
Joplin	82
Webb City	54
Carthage	49
Carl Junction R-1	40
Neosho	26
Seneca	22
Diamond	17
College Heights	16
East Newton	14
Nevada	12

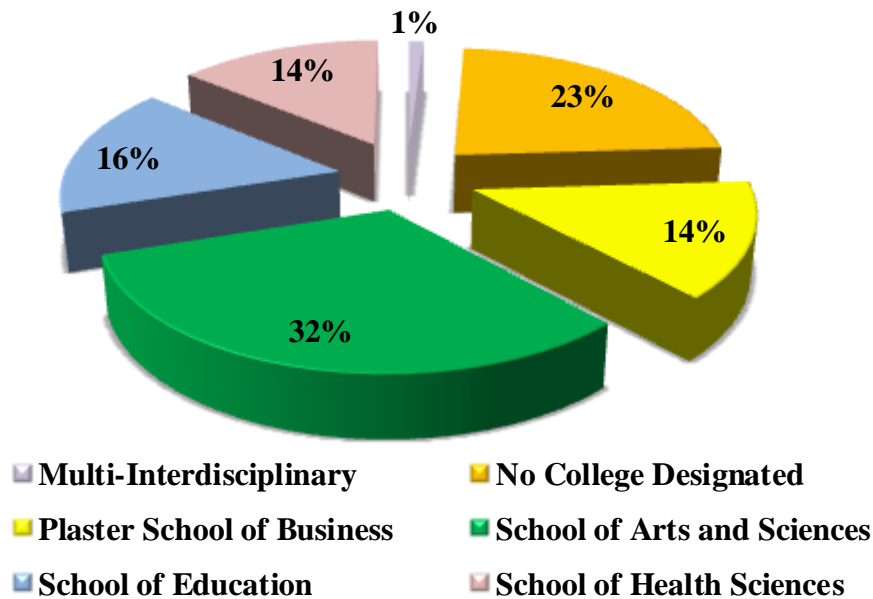
Fall 2013	
High Schools	Count
Joplin	137
Carl Junction R-1	57
Webb City	45
Carthage	29
Seneca	19
Riverton	14
Southwest	12
Nevada	12
Diamond R-IV	12
East Newton R-6	12

Source: IPEDS Fall Enrollment

Fall First-Time Students by School

School	2010		2011		2012		2013		2014	
	Count	%	Count	%	Count	%	Count	%	Count	%
Multi-Interdisciplinary	1	0%	0	0%	0	0%	4	1%	9	1%
No College Designated	216	24%	184	24%	178	22%	169	21%	201	23%
Plaster School of Business	116	13%	112	15%	110	14%	120	15%	117	14%
School of Arts and Sciences	280	31%	241	31%	227	28%	270	33%	273	32%
School of Education	156	17%	137	18%	153	19%	109	14%	136	16%
School of Health Sciences	131	15%	101	13%	134	17%	136	17%	120	14%
Total	900	100%	775	100%	802	100%	808	100%	856	100%

Percent of First-time Students by School, Fall 2014



Sources: School/Department of student’s primary major as of Census date based on the school structure as of fall 2014

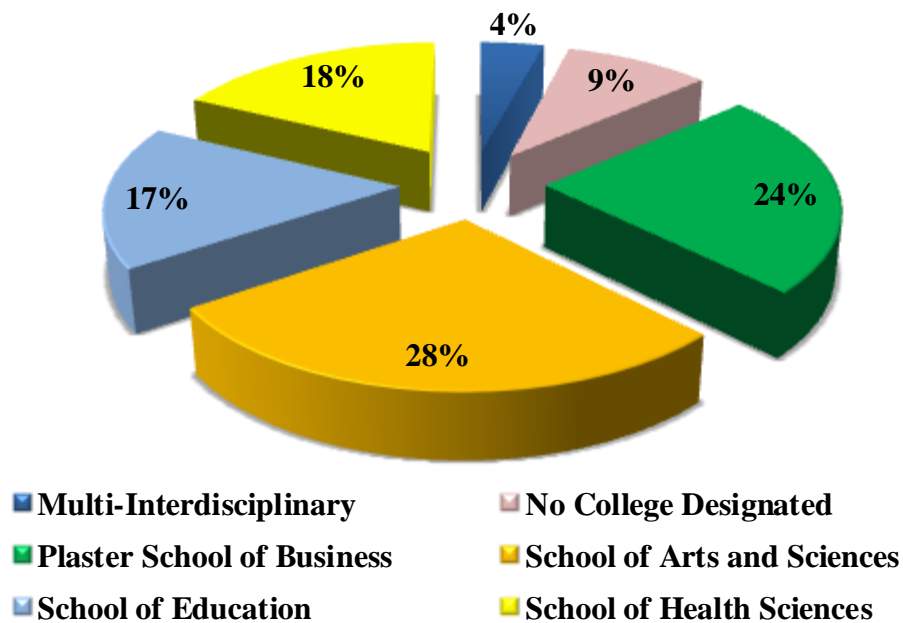
Fall First-Time Students by Department

Department	2010	2011	2012	2013	2014
Accounting	19	21	20	16	21
Art	20	13	13	14	10
Arts & Sciences Extra					6
Biology-Environmental Health	89	81	63	97	88
Communication	11	12	13	6	14
Computer Information Science	21	30	17	26	25
Criminal Justice	75	76	63	85	77
Dental Hygiene	24	18	8	24	9
English and Philosophy	17	7	4	7	11
Engineering Technology	8	11	8	16	16
Finance & Economics	6	1	6	3	4
Foreign Languages	4	3	3	3	2
General Business	26	17	18	10	4
Health Science	1	10	24	17	32
International Business	9	5	3	8	2
International Studies	3	3	4	4	2
Kinesiology	27	24	34	23	18
Marketing and Management	27	27	38	30	22
Mathematics	2		7	2	3
Medical Technology	4	6	3	0	3
Multi-Interdisciplinary Studies	1			4	9
Music	20	10	13	13	8
Nursing	70	52	73	71	61
Paramedic	11		6	3	1
Physical Science	16	19	24	17	18
Psychology	32	32	31	25	33
Radiologic Technology	18	13	16	19	12
Respiratory Therapy	3	2	4	2	2
Social Science	17	13	14	18	27
Teacher Education	97	81	88	61	85
Theatre	6	4	6	4	7
Undeclared	216	184	178	169	201
Undeclared Business Administration				11	23
Total	900	775	802	808	856

Fall First-Time Transfer Students by School

	2010		2011		2012		2013		2014	
	Count	%	Count	%	Count	%	Count	%	Count	%
Multi-Interdisciplinary	5	1%	6	1%	9	2%	14	2%	24	4%
No College Designated	211	35%	176	31%	93	16%	61	10%	55	9%
Plaster School of Business	96	16%	93	16%	110	19%	147	25%	139	24%
School of Arts and Sciences	114	19%	108	19%	131	23%	129	22%	163	28%
School of Education	86	14%	100	17%	132	23%	120	21%	97	17%
School of Health Sciences	92	15%	93	16%	106	18%	111	19%	103	18%
Total	604	100%	576	100%	581	100%	582	100%	581	100%

Percent of First-time Transfer Students by School, Fall 2014



Sources: School/Department of student's primary major as of Census date based on the school structure as of fall 2014

Fall First-Time Transfer Students by Department

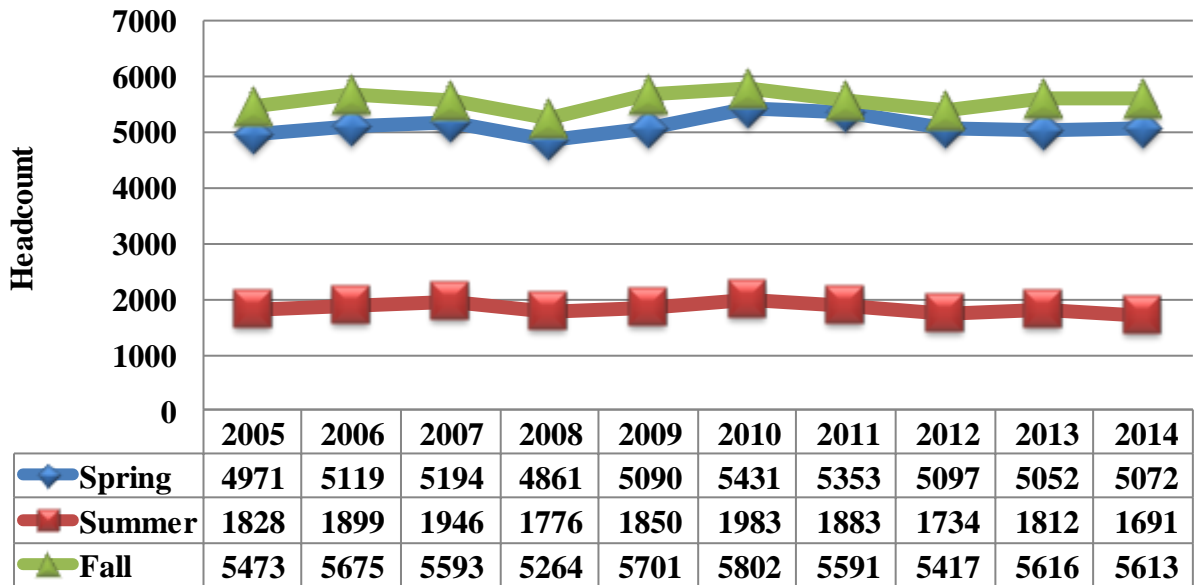
Major	2010	2011	2012	2013	2014
Accounting	26	16	24	26	30
Art	5	8	4	4	5
Art and Science Extra				2	4
Biology-Environmental Health	29	26	24	36	41
Communication	15	10	9	10	11
Computer Information Science	11	15	14	14	19
Criminal Justice	42	39	44	43	52
Dental Hygiene	28	5	3	11	20
English and Philosophy	4	6	2	3	4
Engineering Technology	4	2	3	11	8
Finance & Economics	3	4	4	13	8
Foreign Languages	4	3	3	1	1
General Business	12	10	20	18	9
Health Science	4	47	55	43	41
International Business	7	3	8	3	3
International Studies	1			3	2
Kinesiology	14	16	17	16	15
Marketing and Management	33	43	37	45	41
Mathematics		1	3	1	6
Medical Technology	2	1		3	2
Multi-Interdisciplinary Studies	5	6	9	14	24
Music		2	4	4	4
Nursing	28	36	36	38	31
Paramedic	15	2	7		
Physical Science	2	5	13	10	8
Psychology	14	21	18	34	13
Radiologic Technology	7	1	3	10	8
Respiratory Therapy	8	1	2	6	1
Social Science	12	7	21	8	18
Teacher Education	58	63	97	70	69
Theatre		1	4	4	7
Undeclared	211	176	93	61	55
Undeclared Business Administration				17	21
Total	604	576	581	582	581

Sources: School/Department of student's primary major as of Census date based on school structure as of fall 2014

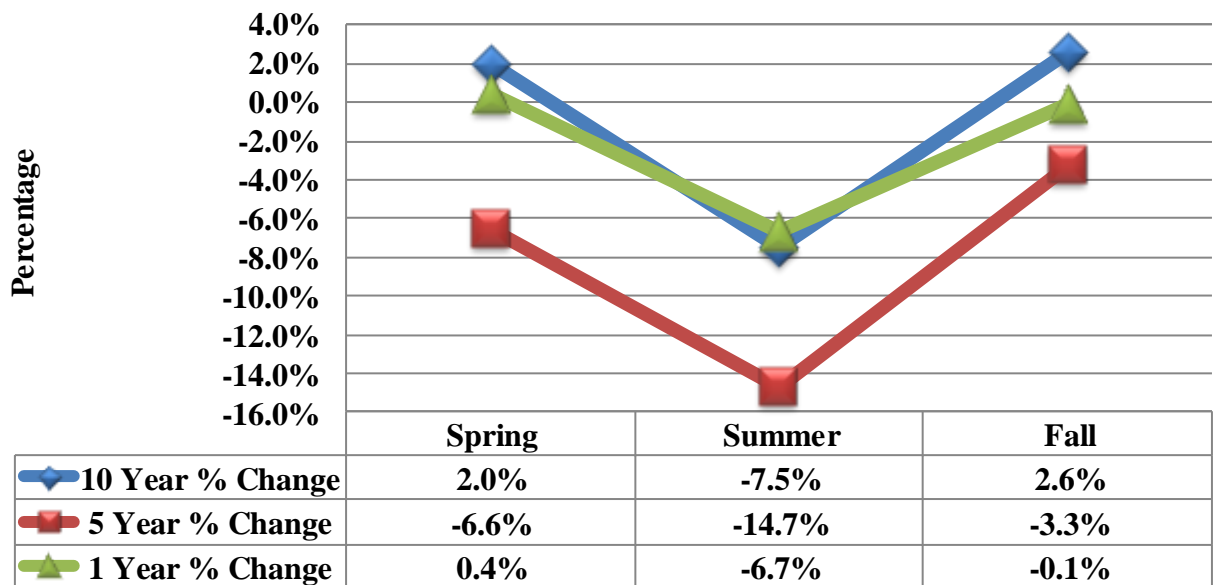
Enrollment



Ten-Year Enrollment Trends



Differences in 1, 5 & 10 Year Enrollment Trends



Fall Undergraduate Student Profile

Race/Ethnicity	2010		2011		2012		2013		2014	
International	120	2%	114	2%	125	2%	158	3%	193	3%
Hispanic/Latino	154	3%	155	3%	164	3%	201	3%	214	4%
American Indian or Alaska Native	169	3%	150	3%	152	3%	164	3%	163	3%
Asian	71	1%	77	1%	84	2%	103	2%	122	2%
Black or African American	223	4%	214	4%	230	4%	271	5%	341	6%
Native Hawaiian or Other Pacific Islander	3	0%	5	0%	5	0%	4	0%	3	0%
White	4,678	81%	4,496	81%	4,300	81%	4,415	79%	4,271	77%
Two or more races	7	0%	39	1%	59	1%	42	1%	41	1%
Race and ethnicity unknown	326	6%	286	5%	232	4%	229	4%	213	4%
Total	5,751	100%	5,536	100%	5,351	100%	5,587	100%	5,561	100%

Age Breakdown	2010		2011		2012		2013		2014	
17 & younger	253	4%	204	4%	216	4%	276	5%	276	5%
18 - 19	1,304	23%	1,132	20%	1,102	21%	1,151	21%	1,276	23%
20 - 21	1,253	22%	1,203	22%	1,230	23%	1,269	23%	1,213	22%
22 - 24	1,004	17%	1,059	19%	1,015	19%	1,070	19%	1,115	20%
25 - 29	728	13%	718	13%	686	13%	665	12%	639	11%
30 - 34	428	7%	402	7%	359	7%	407	7%	368	7%
35 - 39	263	4%	278	5%	247	4%	263	5%	237	4%
40 - 49	328	6%	352	6%	325	6%	304	5%	262	5%
50 - 64	147	3%	143	3%	134	2%	137	2%	120	2%
65 and over	34	1%	33	1%	30	1%	39	1%	46	1%
Age unknown/unrec	9	0%	12	0%	7	0%	6	0%	9	0%
Total	5,751	100%	5,536	100%	5,351	100%	5,587	100%	5,561	100%

Gender	2010		2011		2012		2013		2014	
Male	2,417	42%	2,354	43%	2,247	42%	2,354	42%	2,372	43%
Female	3,334	58%	3,182	57%	3,104	58%	3,233	58%	3,189	57%
Total	5,751	100%	5,536	100%	5,351	100%	5,587	100%	5,561	100%

Enrollment Status	2010		2011		2012		2013		2014	
Full-time	4,283	74%	4,039	73%	4,022	75%	4,125	74%	4,140	74%
Part-time	1,468	26%	1,497	27%	1,329	25%	1,462	26%	1,421	26%
Total	5,751	100%	5,536	100%	5,351	100%	5,587	100%	5,561	100%

Sources: IPEDS Fall Enrollment Surveys

Fall Graduate Student Profile

Race/Ethnicity	2010		2011		2012		2013		2014	
Hispanic/Latino	0	0%	0	0%	2	3%	0	0%	1	2%
American Indian or Alaska Native	2	4%	3	5%	3	5%	0	0%	1	2%
Asian	1	2%	0	0%	1	2%	0	0%	1	2%
Black or African American	0	0%	1	2%	2	3%	3	10%	0	0%
White	46	90%	30	55%	32	48%	21	72%	42	81%
Two or more races	0	0%	0	0%	1	2%	0	0%	0	0%
Race and ethnicity unknown	2	4%	21	38%	25	38%	5	17%	7	13%
Total	51	100%	55	100%	66	100%	29	100%	52	100%
Age Breakdown	2010		2011		2012		2013		2014	
21 & younger	1	2%	0	0%	0	0%	0	0%	0	0%
22 - 24	14	27%	3	5%	6	9%	5	17%	9	17%
25 - 29	16	31%	17	31%	19	29%	6	21%	11	21%
30 - 34	5	10%	13	24%	13	20%	6	21%	10	19%
35 - 39	8	16%	5	9%	7	10%	3	10%	6	12%
40 - 49	6	12%	14	26%	17	26%	8	28%	13	25%
50 - 64	1	2%	3	5%	4	6%	1	3%	3	6%
65 and over	0	0%	0	0%	0	0%	0	0%	0	0%
Total	51	100%	55	100%	66	100%	29	100%	52	100%
Gender	2010		2011		2012		2013		2014	
Male	17	33%	9	16%	18	27%	9	31%	8	15%
Female	34	67%	46	84%	48	73%	20	69%	44	85%
Total	51	100%	55	100%	66	100%	29	100%	52	100%
Enrollment Status	2010		2011		2012		2013		2014	
Full-time	1	2%	1	2%	2	3%	1	3%	8	15%
Part-time	50	98%	54	98%	64	97%	28	97%	44	85%
Total	51	100%	55	100%	66	100%	29	100%	52	100%

Sources: IPEDS Fall Enrollment Surveys

Fall Enrollment by Race/Ethnicity and Gender

Race/Ethnicity	2010	2011	2012	2013	2014
Men					
International	60	57	63	99	101
Hispanic/Latino	66	68	77	88	89
American Indian or Alaska Native	65	62	63	66	70
Asian	35	34	41	53	57
Black or African American	141	137	145	170	201
Native Hawaiian or other Pacific Islander	1	3	1	1	1
White	1,931	1,876	1,763	1,777	1,757
Two or more races	4	16	20	16	16
Race and ethnicity unknown	131	110	92	93	88
Total men	2,434	2,363	2,265	2,363	2,380
Female					
International	60	57	62	59	92
Hispanic/Latino	88	87	89	113	126
American Indian or Alaska Native	106	91	92	98	94
Asian	37	43	44	50	66
Black or African American	82	78	87	104	140
Native Hawaiian or other Pacific Islander	2	2	4	3	2
White	2,793	2,650	2,569	2,659	2,556
Two or more races	3	23	40	26	25
Race and ethnicity unknown	197	197	165	141	132
Total women	3,368	3,228	3,152	3,253	3,233
Total	5,802	5,591	5,417	5,616	5,613

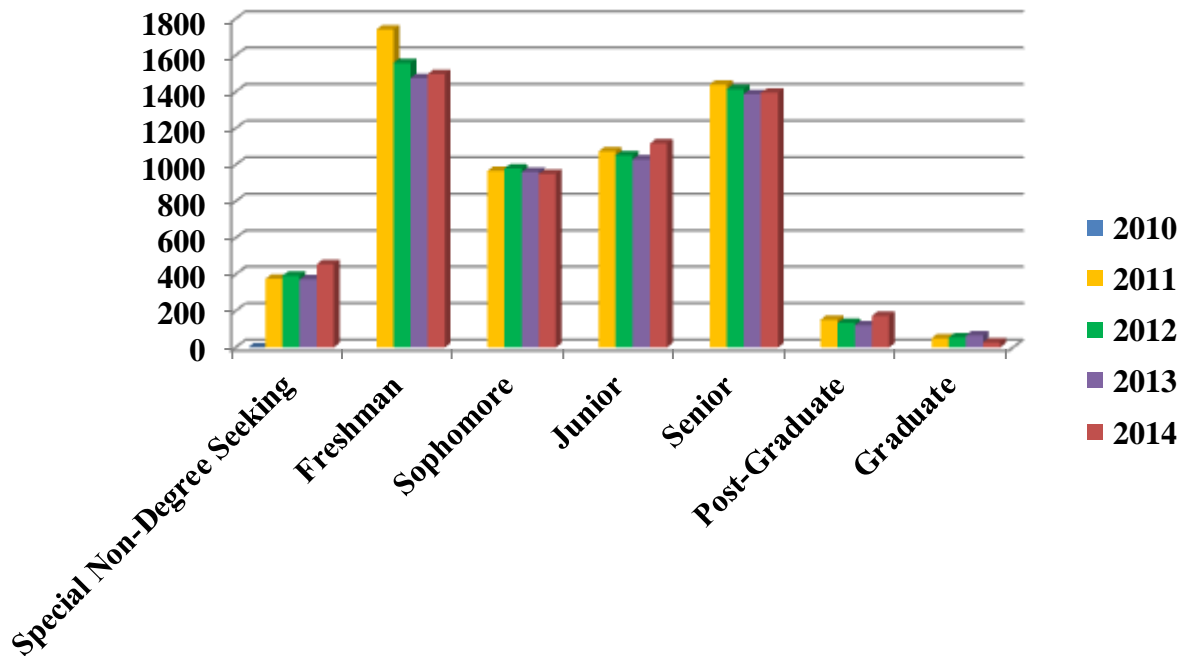
Sources: IPEDS Fall Enrollment Surveys

Fall Enrollment by Class Level

Classification	2010		2011		2012		2013		2014	
Special Non-Degree Seeking	376	7%	394	7%	373	7%	455	8%	485	9%
Freshman	1,741	30%	1,558	28%	1,476	27%	1,497	27%	1,478	26%
Sophomore	967	17%	981	18%	961	18%	950	17%	948	17%
Junior	1,075	19%	1,053	19%	1,031	19%	1,117	20%	1,119	20%
Senior	1,440	25%	1,415	25%	1,388	26%	1,395	25%	1,417	25%
Post-Graduate	152	3%	135	2%	122	2%	173	3%	114	2%
Graduate	51	1%	55	1%	66	1%	29	1%	52	1%
Total	5,802	100%	5,591	100%	5,417	100%	5,616	100%	5,613	100%
FTE*	4,599		4,358		4,295		4,400		4,415	
Full Time	4,284		4,040		4,024		4,126		4,148	
Part Time	1,518		1,551		1,393		1,490		1,465	

*FTE is calculated by dividing undergraduate credit hours by 15 plus graduate credit hours by 12 per semester

Fall Enrollment by Class Level



Sources: In-House Report

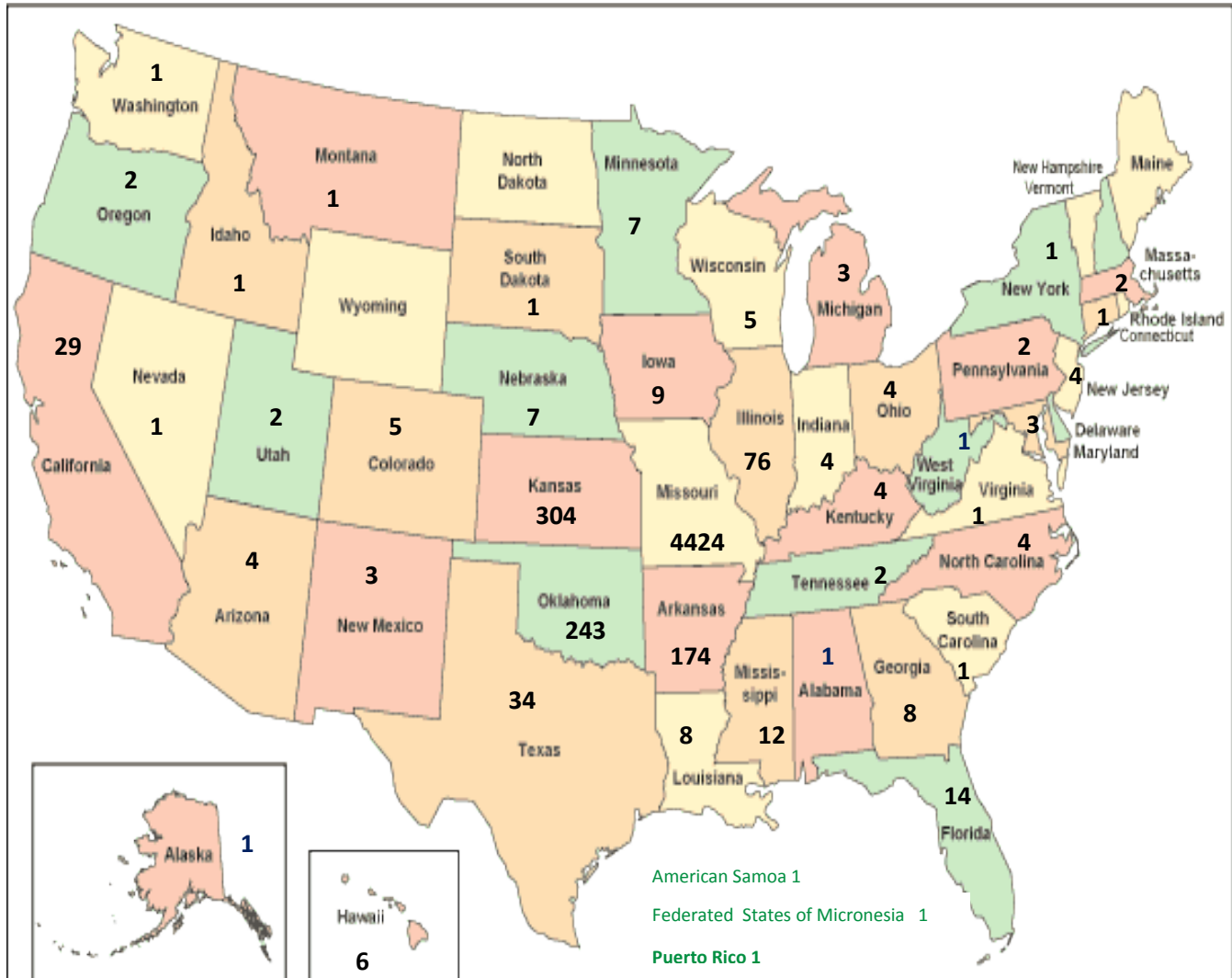
Place of Origin at First Application by County, Fall 2010-2014

Missouri County	2010	2011	2012	2013	2014	Missouri County	2010	2011	2012	2013	2014
Adair	5	2	1	1	2	Madison				1	2
Andrew			2	2	1	Maries	2	1	4	3	1
Atchison	1	1		1		Marion			1		
Audrain	2	1		2	5	McDonald	100	105	115	94	92
Barry	153	127	127	146	138	Mercer	1	2	2	2	1
Barton	119	103	92	95	82	Miller	5	4	6	8	6
Bates	37	20	24	28	25	Moniteau			1	2	1
Benton	4	3	5	7	3	Monroe	1	2	2	1	
Bollinger	2	2				Montgomery	2		2	4	2
Boone	8	7	11	4	11	Morgan	1	2	3	3	5
Buchanan	3	4	2	4	4	New Madrid	4	3	3	6	4
Butler	3	4	5	8	2	Newton	760	741	741	772	746
Caldwell	2	1	1	1	2	Nodaway	6	4	3	2	2
Callaway	7	2	1	1	2	Osage	2	3	4	7	6
Camden	7	6	6	9	7	Ozark			1	2	2
Cape Girardeau	6	7	6	9	11	Pemiscot	1		1		
Carroll		1	1	1		Perry	2	1		1	
Carter	3					Pettis	7	5	2	4	3
Cass	21	26	31	29	38	Phelps	17	16	8	6	10
Cedar	35	39	38	30	29	Pike	1	1	1	2	1
Christian	33	42	44	44	44	Platte	7	7	6	7	4
Clark					1	Polk	16	13	13	16	11
Clay	20	25	29	23	24	Pulaski	32	31	31	27	27
Clinton	1	1	2	2	1	Putnam	1		1	2	2
Cole	10	8	6	2	6	Ralls		1	2	2	2
Cooper	3	2		3	1	Randolph		1	1	1	1
Crawford	2	8	2	2	3	Ray	1	2	2	1	2
Dade	17	16	25	25	17	Reynolds	1	2			
Dallas	6	4	6	4	3	Ripley	3	1			
Dent	1	2	2		1	Saline	1				
Douglas	8	5	1	2	3	Schuyler					1
Dunklin	3	1	2	5	2	Scotland	1	1	1	1	1
Franklin	16	14	14	8	10	Scott	3	7	6	5	5
Gasconade	1	4	4	3	2	Shannon	1	1	3		
Gentry	1					St. Charles	20	15	15	14	18
Greene	74	90	82	71	77	St. Clair	2	5	4	3	3
Grundy	1	1	1	1		St. Francois	1	3	8	7	10
Harrison			1	2	3	St. Louis	58	61	79	71	76
Henry	2	1	3	3	1	Ste. Genevieve	2	3			1
Hickory	3			1	1	Stoddard	6	5	3	3	5
Howard			1	1	2	Stone	29	32	29	25	23
Howell	15	12	15	14	9	Sullivan	1	1	1		
Jackson	73	77	81	102	104	Taney	17	16	15	15	16
Jasper	2644	2548	2369	2435	2312	Texas	8	5	6	6	4
Jefferson	11	13	11	13	15	Vernon	93	81	81	77	79
Johnson	3	4	3	3	7	Warren	4	4	4	2	4
Laclede	26	28	32	28	26	Washington	4	3	3	3	3
Lafayette	1	1			1	Wayne	1	2	3		
Lawrence	158	162	170	153	161	Webster	9	7	9	9	12
Lewis	1	1	2	1		Wright	8	6	4	8	10
Lincoln	2	2	2	1	1	St. Louis (City)	8	6	12	14	16
Livingston			1			Unknown County	1	3		1	3
Macon	2	1			1	Missouri Total	4807	4644	4506	4570	4424

Place of Origin at First Application by State, Fall 2010-2014 Enrollment

States/U.S. Territories	2010	2011	2012	2013	2014
Alabama	3	2	2		1
Alaska		1			1
American Samoa					1
Arizona	1	7	2	2	4
Arkansas	166	168	158	162	174
California	16	32	26	24	29
Colorado	13	11	5	5	5
Connecticut	2		1	1	1
District of Columbia, DC	1				
Federated States of Micronesia					1
Florida	15	15	14	19	14
Georgia			3	9	8
Hawaii	2	1	1	5	6
Idaho	1	1	1	1	1
Illinois	27	28	32	37	76
Indiana	6	5	2	5	4
Iowa	10	13	11	8	9
Kansas	269	230	243	300	304
Kentucky	2	2	1	3	4
Louisiana	3	3	14	15	8
Maine		1			
Maryland	3		1	1	3
Massachusetts	1		1	2	2
Michigan	3	2	2	3	3
Minnesota	9	13	11	12	7
Mississippi	8	3	2	8	12
Missouri	4,807	4,644	4,506	4,570	4,424
Montana	2	2	1	2	1
Nebraska	5	4	7	4	7
Nevada	1	2	1	1	1
New Hampshire			1	1	
New Jersey		4	3	5	4
New Mexico	4	4	2	3	3
New York	5	4	3	1	1
North Carolina			1	4	4
North Dakota	1				
Ohio	3	2	3	5	4
Oklahoma	201	192	172	190	243
Oregon	1	4	2	3	2
Pennsylvania	3	2	2	2	2
Puerto Rico					1
South Carolina	1	1	1	3	1
South Dakota	2	2	3	1	1
Tennessee	7	4	3	3	2
Texas	35	32	31	30	34
Utah	3	1	1	1	2
Virginia	2	2	2	1	1
Washington	4	4	3	5	1
West Virginia	1				1
Wisconsin	5	4	6	4	5
Wyoming	1	1			
State Unknown	54	39	7	1	
States/U.S. Territories Total	5,709	5,492	5,294	5,462	5,423

Place of Origin at First Application by State Map, Fall 2014 Enrollment



Sources: <http://www.state-maps.org/>

Place of Origin at First Application by Country, Fall 2010-2014 Enrollment

Country	2010	2011	2012	2013	2014
Australia		1	1		1
Bahamas	1				1
Belarus			1		
Belgium			1		
Botswana	2	1	1		
Brazil	3	3	1	1	3
Canada	2	2	1	1	2
China	10	13	20	18	17
Colombia					1
Congo		1		1	1
Denmark	1	1			
Equatorial Guinea				1	
El Salvador	1	1			
Finland	1				1
France				2	1
Gambia	2	2	4	5	5
Germany	1	6	18	6	8
Ghana					1
Haiti	7				
India	1		2	3	4
Iraq			1	1	
Ireland				1	
Italy				1	
Jamaica					1
Japan	5	9	10	7	17
Jordan		1		1	1
Kenya	1	1	2	2	2
Korea, Republic of				4	12
Mexico					1
Nepal	3	3	2	3	1
Netherlands		1	1	1	4
New Zealand		1			
Nicaragua	1	1	1		
Nigeria	3	3	2	2	3
Panama					1
Russian Federation		1			
Saudi Arabia	6	14	21	68	66
Serbia	1	1	2	2	2
Spain	1	1	1		1
Sri Lanka	1	1	1	1	
Taiwan, Province of China	1	1			
Thailand	1				
Ukraine					8
United Kingdom	2	1	1	1	1
Venezuela			1		
Venezuela, Bolivarian Republic of	2	2	1	1	
Viet Nam			1	1	
Virgin Islands, British	14	17	19	18	21
Zambia		1	1	1	2
Foreign Country Unknown	19	8	5		
Country Total	93	99	123	154	190
Total Enrollment	5,802	5,591	5,417	5,616	5,613

Fall Undergraduate Enrollment by School/Department

School/Department	2010	2011	2012	2013	2014	Total
School of Arts and Sciences						
Art	92	91	78	91	83	435
Art & Science Extra			1	3	13	17
Biology-Environmental Health	358	381	355	393	405	1,892
Communication	133	122	114	109	115	593
Criminal Justice	483	472	467	469	476	2,367
English and Philosophy	77	76	60	61	67	341
Foreign Languages	43	37	29	32	23	164
International Studies	22	23	20	21	23	109
Mathematics	14	14	33	32	31	124
Music	45	45	46	47	48	231
Physical Science	67	76	103	116	92	454
Social Science	160	143	155	154	165	777
Theater	31	29	26	32	31	149
School of Arts and Sciences Total	1,525	1,509	1,487	1,560	1,572	7,653
* Criminal Justice moved from School of Health Sciences to School of Arts & Sciences (effective Fall 2013)						
Plaster School of Business						
Accounting	263	258	241	232	209	1,203
Business Extra				48	76	124
Computer Information Science	149	158	141	168	174	790
Engineering Technology	89	73	73	102	115	452
Finance & Economics	62	53	49	62	71	297
General Business	134	127	141	119	102	623
International Business	65	44	42	43	32	226
Marketing and Management	335	330	364	404	403	1,836
Plaster School of Business Total	1,097	1,043	1,051	1,178	1,182	5,551
** Computer Science & Engineering Technology moved from School of Health Sciences to School of Arts & Sciences (effective Fall 2013)						
School of Education						
Kinesiology	148	156	166	181	158	809
Psychology	196	197	172	199	177	941
Teacher Education	745	683	669	623	609	3,329
School of Education Total	1,089	1,036	1,007	1,003	944	5,079
School of Health Sciences						
Dental Hygiene	142	29	14	55	47	287
EMT/Paramedics	43	9	20	13	1	86
Health Science	53	259	299	308	331	1,250
Medical Technology	19	24	15	17	16	91
Nursing	346	357	347	350	324	1,724
Radiology Technology	70	34	30	39	33	206
Respiratory Therapy	46	10	11	15	6	88
School of Health Sciences Total	719	722	736	797	758	3,732
***School name changed from Health Sciences, Public Safety & Technology to Health Sciences (effective Fall 2013)						
Multi-Interdisciplinary						
Multi-Interdisciplinary Study****	96	111	136	128	173	644
No College Designated						
No Department Designated	1,225	1,115	934	921	932	5,127
Grand Total	5,751	5,536	5,351	5,587	5,561	27,786

****Multi-Interdisciplinary Study includes Bachelor of General Studies

Sources: Based on student's primary major as of Census date

Spring Undergraduate Enrollment by School/Department

School/Department	2010	2011	2012	2013	2014	TOTAL
<i>School of Arts and Sciences</i>						
Art	76	83	83	82	97	324
Art & Science Extra				3	5	
Biology-Environmental Health	331	347	349	323	342	1,350
Communication	125	130	101	108	109	464
Criminal Justice	413	509	486	449	425	1,857
English and Philosophy	69	77	77	57	60	280
Foreign Languages	33	38	30	39	25	140
International Studies	22	24	22	19	21	87
Mathematics	14	19	12	28	30	73
Music	28	44	36	39	47	147
Physical Science	73	63	77	114	98	327
Social Science	137	144	139	159	149	579
Theater	25	28	28	27	28	108
School of Arts and Sciences Total	1,346	1,506	1,440	1,447	1,436	5,736
* Criminal Justice moved from School of Health Sciences to School of Arts & Sciences (effective Fall 2013)						
<i>Plaster School of Business</i>						
Accounting	239	254	235	221	201	949
Business Extra				11	48	11
Computer Information Science	123	139	144	138	146	544
Engineering Technology	97	92	75	82	92	346
Finance & Economics	68	53	49	55	68	225
General Business	131	129	122	124	109	506
International Business	61	58	41	41	39	201
Marketing and Management	308	339	341	376	394	1,364
Plaster School of Business Total	1,027	1,064	1,007	1,048	1,097	4,146
** Computer Science & Engineering Technology moved from School of Health Sciences to School of Arts & Sciences (effective Fall 2013)						
<i>School of Education</i>						
Kinesiology	132	146	152	176	174	606
Psychology	195	183	175	159	171	712
Teacher Education	724	707	634	604	565	3,452
School of Education Total	1,051	1,036	961	939	910	4,770
<i>School of Health Sciences</i>						
Dental Hygiene	115	136	19	25	36	295
EMT/Paramedics	5	21	5	9	4	40
Health Science	63	58	253	286	313	660
Medical Technology	13	23	18	15	17	69
Nursing	300	358	333	328	328	1,319
Radiology Technology	48	69	25	22	32	164
Respiratory Therapy	41	49	9	17	13	116
School of Health Sciences Total	585	714	662	702	743	2,663
***School name changed from Health Sciences, Public Safety & Technology to Health Sciences (effective Fall 2013)						
<i>Multi-Interdisciplinary</i>						
Multi-Interdisciplinary Study****	82	112	136	157	137	487
<i>No College Designated</i>						
No Department Designated	1,257	842	830	691	707	5,883
Grand Total	5,348	5,274	5,036	4,984	5,030	23,685

****Multi-Interdisciplinary Study includes Bachelor of General Studies

Sources: Based on student's primary major as of Census date

Summer Undergraduate Enrollment by School/Department

School/Department	2010	2011	2012	2013	2014	Total
<i>School of Arts and Sciences</i>						
Art	20	16	19	17	24	96
Art & Science Extra			1	2	5	8
Biology-Environmental Health	111	105	120	120	120	576
Communication	37	35	32	40	31	175
Criminal Justice	163	165	133	121	120	702
English and Philosophy	19	18	16	16	20	89
Foreign Languages	10	15	7	11	10	53
International Studies	6	4	2	3	7	22
Mathematics	1	4	4	6	5	20
Music	4	11	6	4	9	34
Physical Science	19	13	25	36	24	117
Social Science	47	59	46	47	53	252
Theater	7	2	3	2	3	17
School of Arts and Sciences Total	444	447	414	425	431	2,161
* Criminal Justice moved from School of Health Sciences to School of Arts & Sciences (effective Fall 2013)						
<i>Plaster School of Business</i>						
Accounting	129	109	102	95	102	537
Business Extra				12	14	26
Computer Information Science	49	31	44	33	43	200
Engineering Technology	33	25	22	30	36	146
Finance & Economics	27	19	21	19	17	103
General Business	51	42	33	27	28	181
International Business	31	24	15	15	18	103
Marketing and Management	136	134	135	167	169	741
Plaster School of Business Total	456	384	372	398	427	2,037
** Computer Science & Engineering Technology moved from School of Health Sciences to School of Arts & Sciences (effective Fall 2013)						
<i>School of Education</i>						
Kinesiology	53	53	57	66	74	303
Psychology	58	60	41	46	45	250
Teacher Education	246	224	173	195	194	1,032
School of Education Total	357	337	271	307	313	1,585
<i>School of Health Sciences</i>						
Dental Hygiene	62	60	3	6	4	135
EMT/Paramedics	18	15	1	5	1	40
Health Science	29	27	129	144	155	484
Medical Technology	6	8	6	6	7	33
Nursing	98	113	79	84	93	467
Radiology Technology	22	25	5	3	4	59
Respiratory Therapy	29	20	3	9	7	68
School of Health Sciences Total	264	268	226	257	271	1,286
***School name changed from Health Sciences, Public Safety & Technology to Health Sciences (effective Fall 2013)						
<i>Multi-Interdisciplinary</i>						
Multi-Interdisciplinary Study	42	41	62	64	55	264
<i>No College Designated</i>						
No Department Designated	340	329	319	325	170	1,483
Grand Total of All Schools	1,903	1,806	1,664	1,776	1,667	8,816

****Multi-Interdisciplinary Study includes Bachelor of General Studies

Source: Based on student's primary major as of Census date

Fall Graduate Enrollment by School/Department

School/Department	2010	2011	2012	2013	2014	Total
<i>School of Arts and Sciences</i>						
Criminal Justice	28	31	31	25	27	142
<i>Plaster School of Business</i>						
Accounting	0	0	0	0	11	11
<i>School of Education</i>						
Teacher Education	7	4	10	4	14	39
<i>School of Health Sciences</i>						
Dental Hygiene	1	1	0	0	0	2
Nursing	15	19	25	0	0	59
School of Health Sciences Total	16	20	25	0	0	61
Grand Total	51	55	66	29	52	253

Spring Graduate Enrollment by School/Department

School/Department	2010	2011	2012	2013	2014	Total
<i>School of Arts and Sciences</i>						
Criminal Justice	30	36	28	30	30	154
Social Science	14	0	0	0	0	14
School of Arts and Sciences	44	36	28	30	30	168
<i>Plaster School of Business</i>						
General Business	1	2	0	0	0	3
<i>School of Education</i>						
Teacher Education	21	25	16	15	9	86
<i>School of Health Sciences</i>						
Dental Hygiene	0	1	1	0	0	2
Nursing	17	15	16	23	3	74
School of Health Sciences Total	17	16	17	23	3	76
Grand Total	83	79	61	68	42	333

Summer Graduate Enrollment by School/Department

School/Department	2010	2011	2012	2013	2014	Total
<i>School of Arts and Sciences</i>						
Criminal Justice	26	39	22	21	16	124
<i>Plaster School of Business</i>						
General Business	1	0	0	0	0	1
<i>School of Education</i>						
Teacher Education	27	9	23	3	8	70
<i>School of Health Sciences</i>						
Dental Hygiene	2	1	1	0	0	4
Nursing	24	28	24	12	0	88
School of Health Sciences Total	26	29	25	12	0	92
Grand Total	80	77	70	36	24	287

Source: Based on student's primary major as of Census date

Residency by Semester

Spring

Residency	2010		2011		2012		2013		2014	
	Number	Percentile	Number	Percentile	Number	Percentile	Number	Percentile	Number	Percentile
Foreign	97	1.8%	107	2.0%	91	1.8%	143	2.8%	158	3.1%
In-State	4702	86.6%	4628	86.5%	4437	87.1%	4200	83.1%	4113	81.1%
Lion Pride	0	0.0%	0	0.0%	0	0.0%	565	11.2%	672	13.2%
Midwest Student Exchange	0	0.0%	0	0.0%	0	0.0%	0	0.0%	12	0.2%
Non-Resident	632	11.6%	618	11.5%	569	11.2%	144	2.9%	117	2.3%
Total	5431	100.0%	5353	100.0%	5097	100.0%	5052	100.0%	5072	100.0%

Summer

Residency	2010		2011		2012		2013		2014	
	Number	Percentile	Number	Percentile	Number	Percentile	Number	Percentile	Number	Percentile
Foreign	36	1.8%	39	2.1%	33	1.9%	53	2.9%	48	2.8%
In-State	1713	86.4%	1631	86.6%	1486	85.7%	1485	82.0%	1327	78.5%
Lion Pride	0	0.0%	0	0.0%	0	0.0%	205	11.3%	243	14.4%
Midwest Student Exchange	0	0.0%	0	0.0%	0	0.0%	0	0.0%	6	0.4%
Non-Resident	234	11.8%	213	11.3%	215	12.4%	69	3.8%	67	4.0%
Total	1983	100.0%	1883	100.0%	1734	100.0%	1812	100.0%	1691	100.0%

Fall

Residency	2010		2011		2012		2013		2014	
	Number	Percentile	Number	Percentile	Number	Percentile	Number	Percentile	Number	Percentile
Foreign	119	2.1%	120	2.1%	127	2.3%	161	2.9%	193	3.4%
In-State	5001	86.2%	4819	86.2%	4576	84.5%	4636	82.5%	4477	79.8%
Lion Pride	0	0.0%	0	0.0%	554	10.2%	685	12.2%	802	14.3%
Midwest Student Exchange	0	0.0%	0	0.0%	0	0.0%	10	0.2%	16	0.3%
Non-Resident	682	11.8%	652	11.7%	160	3.0%	124	2.2%	125	2.2%
Total	5802	100.0%	5591	100.0%	5417	100.0%	5616	100.0%	5613	100.0%

Credit Hour Production



**MAPPING THE FUTURE:
GENETICS STUDENTS PARTICIPATE
IN INNOVATIVE STUDY.**



Total Annual Credit Hours, Enrollment and Full-Time Equivalent

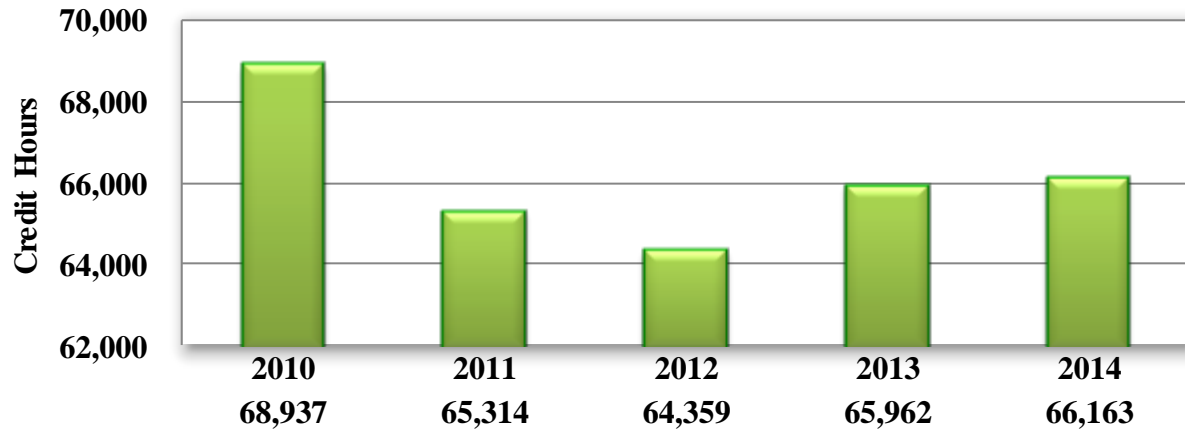
12-Month Credit Hour Activity					
	2009-2010	2010-2011	2011-2012	2012-2013	2013-2014
Total 12-month credit hour activity***	142,805	143,136	134,353	133,482	134,688
Undergraduate student credit hour activity	141,711	142,125	133,451	132,679	134,147
Graduate student credit hour activity	1,094	1,011	902	803	541
***Includes Fall, Spring & Summer Credit Hour Activity as well as in between semester credit activity, such as intersession, etc.					
12-Month Unduplicated Headcount and Full-time Equivalent Students					
Total 12-month unduplicated headcount	6,989	6,980	6,681	6,554	6,518
Undergraduate student unduplicated headcount	6,850	6,861	6,565	6,463	6,464
Graduate student unduplicated headcount	139	119	116	91	54
Total 12-month full-time equivalent (FTE) student enrollment	4,770	4,780	4,486	4,456	4,495
Undergraduate student FTE*	4,724	4,738	4,448	4,423	4,472
Graduate student FTE**	46	42	38	33	23

* Annual undergraduate student FTE is calculated based on undergraduate credit hours divided by 30

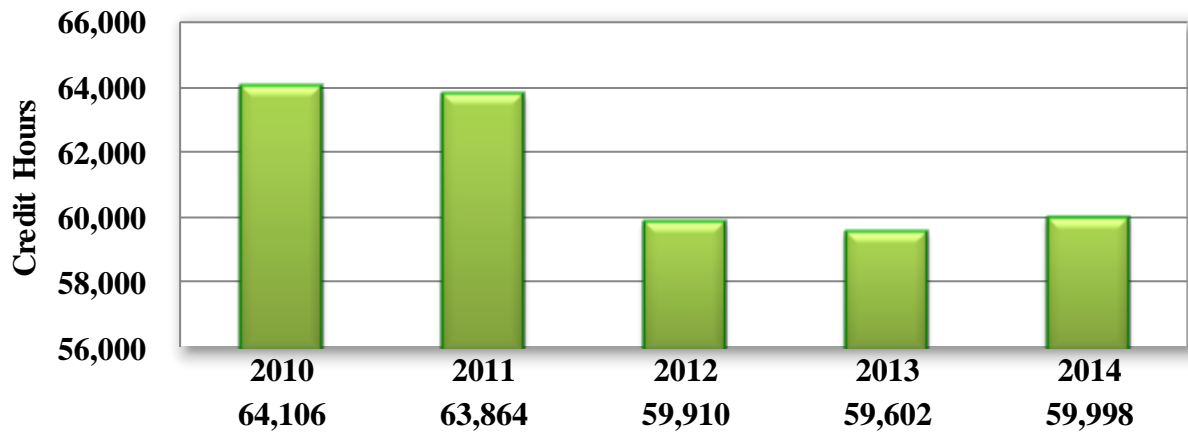
** Annual graduate student FTE is calculated based on graduate credit hours divided by 24

Sources: IPEDS 12 Month Enrollment Surveys

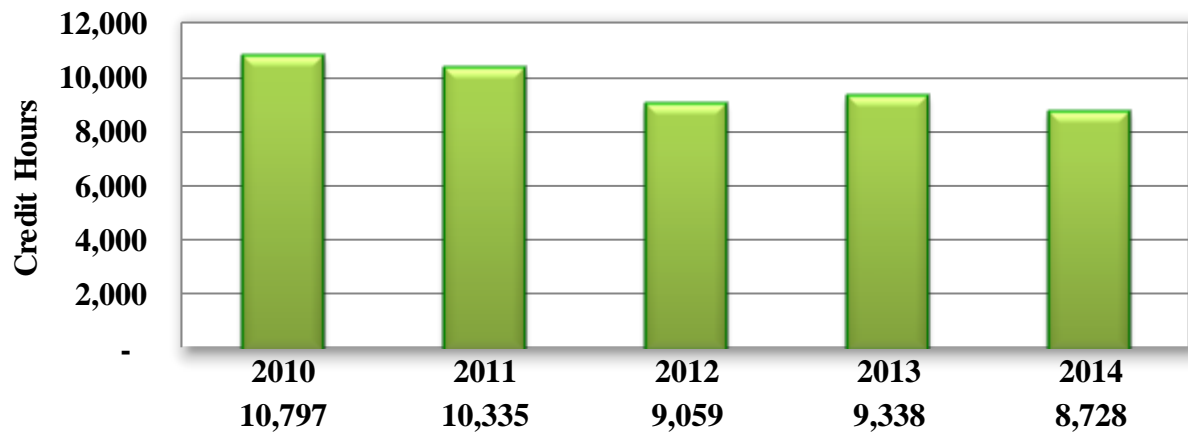
Fall Credit Hours



Spring Credit Hours



Summer Credit Hours



Sources: In-House Report (Census data)

Fall Undergraduate Credit Hours by School/Department

School/Department	2010	2011	2012	2013	2014	Total
School of Arts and Sciences						
Art	1,152	1,079	960	1,140	1,050	5,381
Art & Science Extra	0	0	12	23	122	157
Biology-Environmental Health	4,944	5,160	4,753	5,230	5,176	25,263
Communication	1,783	1,643	1,486	1,401	1,532	7,845
Criminal Justice	6,169	6,241	6,194	6,282	6,220	31,106
English and Philosophy	983	978	767	767	875	4,370
Foreign Languages	542	449	361	427	272	2,051
International Studies	264	313	296	281	307	1,461
Mathematics	183	168	464	424	381	1,620
Music	711	668	681	692	672	3,424
Physical Science	912	1,028	1,388	1,529	1,238	6,095
Social Science	1,942	1,767	1,900	1,919	2,013	9,541
Theater	426	410	381	437	413	2,067
School of Arts and Sciences Total	20,011	19,904	19,643	20,552	20,271	100,381
* Criminal Justice moved from School of Health Sciences to School of Arts & Sciences (effective Fall 2013)						
Plaster School of Business						
Accounting	3,101	2,988	2,907	2,610	2,430	14,036
Business Extra	0	0	0	535	862	1,397
Computer Information Science	1,753	1,938	1,645	1,874	2,092	9,302
Engineering Technology	1,041	857	845	1,215	1,374	5,332
Finance & Economics	777	665	647	755	854	3,698
General Business	1,529	1,413	1,628	1,325	1,127	7,022
International Business	819	522	538	538	398	2,815
Marketing and Management	4,034.5	3,784	4,192	4,651	4,709	21,371
Plaster School of Business Total	13,054.5	12,167	12,402	13,503	13,846	64,973
** Computer Science & Engineering Technology moved from School of Health Sciences to School of Arts & Sciences (effective Fall 2013)						
School of Education						
Kinesiology	2,005	2,139	2,288	2,460	2,138	11,030
Psychology	2,526	2,503	2,146	2,535	2,228	11,938
Teacher Education	9,986	8,976	9,005	8,182	8,053	44,202
School of Education Total	14,517	13,618	13,439	13,177	12,419	67,170
School of Health Sciences						
Dental Hygiene	1,736	368	183	678	584	3,549
EMT/Paramedics	399	103	220	129	14	865
Health Science	585	3,128	3,592	3,563	4,097	14,965
Medical Technology	254	308	187	195	212	1,156
Nursing	4,335	4,345	4,459	4,446	4,147	21,732
Radiology Technology	861	385	357	466	428	2,497
Respiratory Therapy	586	112	117	186	64	1,065
School of Health Sciences Total	8,756	8,749	9,115	9,663	9,546	45,829
***School name changed from Health Sciences, Public Safety & Technology to Health Sciences (effective Fall 2013)						
Multi-Interdisciplinary						
Multi-Interdisciplinary Study****	1,015	1,152	1,484	1,351	1,857	6,859
No College Designated						
No Department Designated	11,413	9,518	8,021	7,585	7,958	44,495
Grand Total	68,766.5	65,108	64,104	65,831	65,897	329,707

****Multi-Interdisciplinary Study includes Bachelor of General Studies

Sources: Based on student's primary major as of Census date

Spring Undergraduate Credit Hours by School/Department

School/Department	2010	2011	2012	2013	2014	TOTAL
School of Arts and Sciences						
Art	930	1,012	995	1,003	1,147	5,087
Art & Science Extra	0	0	0	27	33	60
Biology-Environmental Health	4,443	4,774	4,678	4,244	4,531	22,670
Communication	1,696	1,860	1,386	1,401	1,370	7,713
Criminal Justice	5,376	6,425	6,135	5,785	5,644	29,365
English and Philosophy	907	1,009	985	753	789	4,443
Foreign Languages	459	467	370	498	334	2,128
International Studies	296	318	296	260	301	1,471
Mathematics	189	213	162	398	387	1,349
Music	459	662	573	565	694	2,953
Physical Science	996	834	1,057	1,463	1,317	5,667
Social Science	1,673	1,780	1,744	1,905	1,855	8,957
Theater	354	409	392	363	369	1,887
School of Arts and Sciences Total	17,778	19,763	18,773	18,665	18,771	93,750
* Criminal Justice moved from School of Health Sciences to School of Arts & Sciences (effective Fall 2013)						
Plaster School of Business						
Accounting	2,796	3,073	2,767	2,654	2,264	13,554
Business Extra	0	0	0	110	1,716	1,826
Computer Information Science	1,495	1,653	1,733	1,629	1,685	8,195
Engineering Technology	1,207	1,011	824	966	1,102	5,110
Finance & Economics	832	659	608	666	848	3,613
General Business	1,511	1,453	1,327	1,344	0	5,635
International Business	782	729	472	526	499	3,008
Marketing and Management	3,617	3,909	3,874	4,383	4,569	20,352
Plaster School of Business Total	12,240	12,487	11,605	12,278	12,683	61,293
** Computer Science & Engineering Technology moved from School of Health Sciences to School of Arts & Sciences (effective Fall 2013)						
School of Education						
Kinesiology	1,667	1,978	2,119	2,391	2,350	10,505
Psychology	2,421	2,418	2,256	1,984	2,203	11,282
Teacher Education	9,733	9,380	8,245	7,957	7,466	42,781
School of Education Total	13,821	13,776	12,620	12,332	12,019	64,568
School of Health Sciences						
Dental Hygiene	1,395	1,603	214	286	395	3,893
EMT/Paramedics	42	231	48	100	41	462
Health Science	701	593	2,892	3,295	3,640	11,121
Medical Technology	172	297	221	194	194	1,078
Nursing	3,906	4,454	4,232	4,136	4,218	20,946
Radiology Technology	571	866	266	253	369	2,325
Respiratory Therapy	547	574	98	186	161	1,566
School of Health Sciences Total	7,334	8,618	7,971	8,450	9,018	41,391
***School name changed from Health Sciences, Public Safety & Technology to Health Sciences (effective Fall 2013)						
Multi-Interdisciplinary						
Multi-Interdisciplinary Study****	857	1,138	1,481	1,620	1,470	6,566
No College Designated						
No Department Designated	11,674	7,655	7,132	5,865	5,753	38,079
Grand Total	63,704	63,437	59,582	59,210	59,714	305,647

****Multi-Interdisciplinary Study includes Bachelor of General Studies

Sources: Based on student's primary major as of Census date

Summer Undergraduate Credit Hours by School/Department

School/Department	2010	2011	2012	2013	2014	Total
School of Arts and Sciences						
Art	102	96	97	87	122	504
Art & Science Extra	0	0	9	9	19	37
Biology-Environmental Health	634	579	628	650	669	3,160
Communication	202	195	193	231	135	956
Criminal Justice	962	976	744	721	709	4,112
English and Philosophy	109	93.5	71	76	103	452.5
Foreign Languages	46	77	29	57	49	258
International Studies	24	26	6	12	32	100
Mathematics	6	27	22	24	36	115
Music	16	43	21	18	47	145
Physical Science	114	61	128	177	114	594
Social Science	275	334	238	272	296	1,415
Theater	37	9	14	9	9	78
School of Arts and Sciences Total	2,527	2,516.5	2,200	2,343	2,340	11,927
* Criminal Justice moved from School of Health Sciences to School of Arts & Sciences (effective Fall 2013)						
Plaster School of Business						
Accounting	695	579	558	534	539	2,905
Business Extra	0	0	0	69	84	153
Computer Information Science	264	177	233	161	226	1,061
Engineering Technology	180	122	117	147	177	743
Finance & Economics	137	129	132	99	88	585
General Business	288	225	168	120	138	939
International Business	181	124	94	87	89	575
Marketing and Management	765	761	705	854	849	3,934
Plaster School of Business Total	2,510	2,117	2,007	2,071	2,190	10,895
** Computer Science & Engineering Technology moved from School of Health Sciences to School of Arts & Sciences (effective Fall 2013)						
School of Education						
Kinesiology	298	319	305	344	434	1,700
Psychology	333	314	218	231	213	1,309
Teacher Education	1,302	1,257	906	971	1,016	5,452
School of Education Total	1,933	1,890	1,429	1,546	1,663	8,461
School of Health Sciences						
Dental Hygiene	386	427	17	32	24	886
EMT/Paramedics	162	135	9	45	9	360
Health Science	151	154	780	865	897	2,847
Medical Technology	36	47	40	35	42	200
Nursing	523	596	375	422	482	2,398
Radiology Technology	106	135	26	12	20	299
Respiratory Therapy	183	117	13	42	33	388
School of Health Sciences Total	1,547	1,611	1,260	1,453	1,507	7,378
***School name changed from Health Sciences, Public Safety & Technology to Health Sciences (effective Fall 2013)						
Multi-Interdisciplinary						
Multi-Interdisciplinary Study	258	243	373	346	287	1,507
No College Designated						
No Department Designated	1,591	1,543.5	1,422	1,444	615	6,615.5
Grand Total of All Schools	10,366	9,921	8,691	9,203	8,602	46,783

***Multi-Interdisciplinary Study includes Bachelor of General Studies

Source: Based on student's primary major as of Census date

Fall Graduate Credit Hours by School/Department

School/Department	2010	2011	2012	2013	2014	Total
<i>School of Arts and Sciences</i>						
Criminal Justice	96	111	141	108	102	558
<i>Plaster School of Business</i>						
Accounting	0	0	0	0	84	84
<i>School of Education</i>						
Teacher Education	23	25	38	23	80	189
<i>School of Health Sciences</i>						
Dental Hygiene	3	4	0	0	0	7
Nursing	48	66	76	0	0	190
School of Health Sciences Total	51	70	76	0	0	197
Grand Total	170	206	255	131	266	1028

Spring Graduate Credit Hours by School/Department

School/Department	2010	2011	2012	2013	2014	Total
<i>School of Arts and Sciences</i>						
Criminal Justice	99	132	117	135	174	657
Social Science	48	0	0	0	0	48
School of Arts and Sciences	147	132	117	135	174	705
<i>Plaster School of Business</i>						
General Business	6	6	0	0	0	12
<i>School of Education</i>						
Teacher Education	198	242	134	146	86	806
<i>School of Health Sciences</i>						
Dental Hygiene	0	2	2	0	0	4
Nursing	51	45	75	111	24	306
School of Health Sciences Total	51	47	77	111	24	310
Grand Total	402	427	328	392	284	1833

Summer Graduate Credit Hours by School/Department

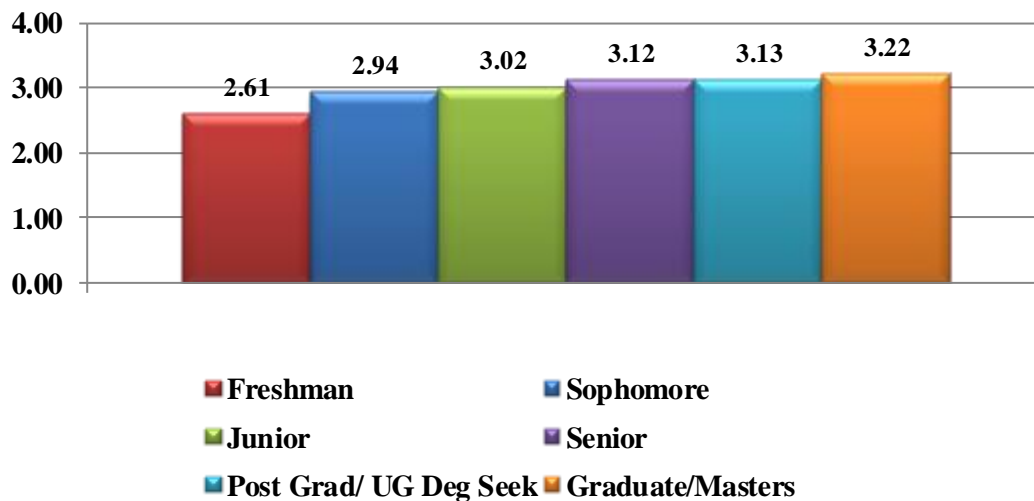
School/Department	2010	2011	2012	2013	2014	Total
<i>School of Arts and Sciences</i>						
Criminal Justice	99	188	78	78	54	497
<i>Plaster School of Business</i>						
General Business	3	0	0	0	0	3
<i>School of Education</i>						
Teacher Education	215	69	187	21	72	564
<i>School of Health Sciences</i>						
Dental Hygiene	6	3	1	0	0	10
Nursing	108	154	102	36	0	400
School of Health Sciences Total	114	157	103	36	0	410
Grand Total	431	414	368	135	126	1474

Source: Based on student's primary major as of Census date

Fall Cumulative GPA by Student Classification

Student Classifications	2010	2011	2012	2013	2014
Special ND Status	3.28	2.75	3.15	2.21	N/A
Freshman	2.45	2.41	2.46	2.47	2.61
Sophomore	2.88	2.87	2.91	2.92	2.94
Junior	3.06	3.05	3.04	3.01	3.02
Senior	3.14	3.16	3.15	3.13	3.12
Post Grad/ UG Deg Seek	3.36	3.19	3.10	3.11	3.13
Graduate/Masters	3.49	3.33	3.48	3.28	3.22

Fall 2014 Cumulative GPA by Student Classification



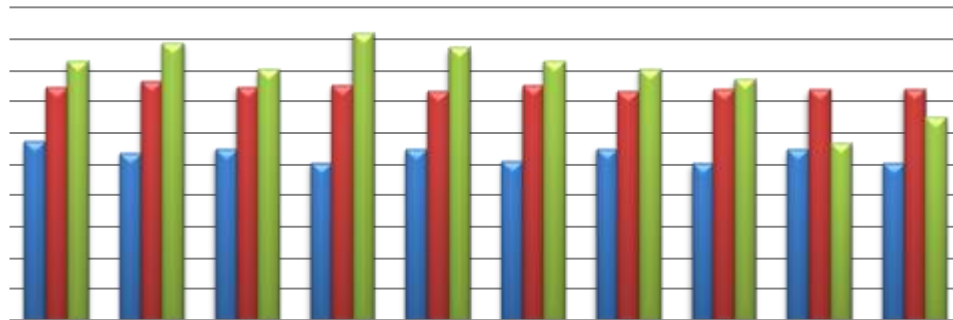
Source: Census data and Banner Query on 2/20/2014

Student Grade Distribution by Class Level

	2009-2010		2010-2011		2011-2012		2012-2013		2013-2014	
	Fall	Spring	Fall	Spring	Fall	Spring	Fall	Spring	Fall	Spring
<i>Lower Division</i>										
A	5,668	4,625	5,424	4,358	4,824	3,956	4,774	3,842	4,750	3,835
AU	7	1	6	2	2	5	6	9	2	2
B	3,729	3,077	3,614	2,956	3,363	2,564	3,283	2,698	3,268	2,751
C	2,014	1,836	2,094	1,832	1,966	1,585	1,885	1,649	1,922	1,678
CR	1,001	1,232	877	1,437	585	944	537	1,182	426	1,262
D	865	766	834	731	696	639	732	659	796	723
F	1,435	1,386	1,362	1,166	1,311	1,203	1,334	1,219	1,509	1,118
IN		1	1					2	8	22
IP				1		8		2	4	2
NK	30	14	28	13	10	13	21	18	17	15
NO		17	20	16	17	15	78	15	1	4
SA	137	91	247	147	155	103	200	101	181	88
SB	185	124	225	177	196	134	202	176	232	158
SC	179	164	208	216	170	158	217	165	207	151
SD	95	82	79	107	92	71	98	64	71	71
SF	153	165	193	204	226	196	222	235	242	175
SIN										1
W	798	755	1,180	1,083	1,351	1,119	1,009	920	1,000	932
Total	16,296	14,336	16,392	14,446	14,964	12,713	14,598	12,956	14,636	12,988
<i>Upper Division</i>										
A	3,647	4,198	3,874	3,983	3,502	4,128	3,558	3,863	3,587	3,763
AU	1	4	15	3	1	1	5	2	1	4
B	2,039	2,197	2,056	2,267	2,188	2,229	2,073	2,174	2,151	2,303
C	947	897	953	993	1,021	961	964	946	948	1,020
CR	118	89	80	119	113	163	152	163	54	54
D	231	284	283	293	268	284	281	287	260	287
F	367	401	346	352	312	365	303	337	375	341
IN								1	1	27
IP										7
NK	6	8	2	3	4	2		1	1	
W	226	249	319	276	313	306	304	354	372	371
Total	7,582	8,327	7,928	8,289	7,722	8,439	7,640	8,128	7,750	8,177
<i>Graduate</i>										
A	40	53	31	68	38	47	44	62	12	18
B	5	12	10	1	10	12	6	9	8	6
C		6	2		2	1	2	1	5	8
CR							1			
F	5	1	2	3	4	4	2	10	4	3
IN										
W	4	1	6	3	1	7	7	10	6	2
Total	54	73	51	75	55	71	62	92	35	37

Sources: Banner query on 9/13/2014

Percentage of A and B Grades by Level



	Fall 2009	Spring 2010	Fall 2010	Spring 2011	Fall 2011	Spring 2012	Fall 2012	Spring 2013	Fall 2013	Spring 2014
Lower Division	57.7%	53.7%	55.1%	50.6%	54.7%	51.3%	55.2%	50.5%	54.8%	50.7%
Upper Division	75.0%	76.8%	74.8%	75.4%	73.7%	75.3%	73.7%	74.3%	74.0%	74.2%
Graduate	83.3%	89.0%	80.4%	92.0%	87.3%	83.1%	80.6%	77.2%	57.1%	64.9%

Source: Banner Query on 9/13/2014



Degrees Conferred



Degrees and Certifications Offered as of Fall 2014

School of Arts and Sciences

Art-Visual (BA)	AR01
Fine Arts-Studio (BFA)	AR02
Fine Arts-Graphic Design (BFA)	AR03
Bachelor of Applied Sci (BAS)	BAS0
Biology&Biochem-ForensicSc(BS)	BC00
Biochemistry (BS)	BC01
Biology-Btch Mic Gen (BS)	BI01
Biology-Ecol Mar Cons (BS)	BI02
Biology-Gen Bio or Und (BS)	BI04
Biology-PhysOccup Thpy (BS)	BI05
Biology-Preprof-Dent (BS)	BI06
Biology-Preprof-Med (BS)	BI07
Biology-Preprof-Optom (BS)	BI08
Biology-Preprof-Pharm (BS)	BI09
Biology-Preprof-Vet (BS)	BI10
Chemistry (BS)	CH00
Chemistry (BA)	CH01
CrimJustAd/CIS-Comp Foren (BS)	CJ00
Criminal Justice Adm (BS)	CJ01
Juvenile Justice (BS)	CJ03
Communication-Public Rela (BA)	CO00
Communication-Mass (BA)	CO02
Communication-Public Rela (BS)	CO05
Communications-Mass (BS)	CO06
Environmental Hlth (BS)	EH02
Environmtl Health-Distant (BS)	EH04
EHS-General (Certif)	EH84
EHS-Biology (Certif)	EH85
EHS-Protection (Certif)	EH86
EHS-Safety&Hazard Prevention	EH87
English-Lit Studies (BA)	EN03
English-Prof/Tech Writ (BA)	EN04
French (BA)	FL00
German (BA)	FL01
Spanish (BA)	FL02
Medical Interpretation (Certif)	FL86
Criminal Justice-SEMO(MS)	GR04
History (BA)	HI00
International Studies (BA)	IS00
Law Enforcement-Opt A (AS)	LE00
Law Enforcement-Opt B (AS)	LE01
Basic Fire Academy (Certif)	LE80
Peace Officer Train (Certif)	LE81
Mathematics (BS)	MA00
Math/CIS-ComputationalMath(BS)	MA01
Music (BA)	MU00

School of Arts and Sciences

Music Industry (BA)	MU01
Physics (BS)	PH00
Physics-Engineering (BS)	PH01
Paralegal Studies Certificate	PL81
Political Science (BS)	PS00
Political Science (BA)	PS01
Sociology (BA)	SO00
Sociology (BS)	SO01
Theatre (BA)	TH00

Plaster School of Business

Accounting (BSBA)	AC00
CIS/Math-ComputationalMath(BS)	CI02
CIS-Info Systems w/GenBusMinor	CI03
CIS-Info Technology (BS)	CI04
CIS/CrimJustAdm-Comp Foren(BS)	CI05
CIS-Info Systems (AS)	CI07
CIS-InfoTech ProcessImproMinor	CI11
Economics (BSBA)	EC10
Economics (BS)	EC20
Finance (BSBA)	FN10
General Business Business (BSBA)	GB00
Business Major-Undeclar (BSBA)	GB30
Business Administ-NWMSU (MBA)	GR05
Accountancy (MAcc)	GR09
Accountancy Accelerated (MA)	GR10
International Business (BSBA)	IB00
Industrial Engineer Tech (BS)	IE00
Manufacturing Engin Tech (AS)	IE02
Logistics (BS)	IE03
CADD Operator (Certif)	IE80
CNC Operator (Certif)	IE81
Quality Tech (Certif)	IE83
Management (BSBA)	MM00
Marketing (BSBA)	MM03
Human ResourceManagement(BSBA)	MM04
Entrepreneurship (Certif)	MM86
Ent Planning (Certif)	MM95
Ent Finance (Certif)	MM96
Ent Accounting (Certif)	MM97
Ent Management (Certif)	MM98
Ent Marketing (Certif)	MM99
Six Sigma Green Belt (Certif)	SS80
Six Sigma Black Belt (Certif)	SS81

Degrees and Certifications Offered as of Fall 2014 (continued)

<i>School of Education</i>	
Hlth Promotion & Wellness (BS)	KI00
Psychology (BS)	PY00
Psychology (BA)	PY01
E Ed-Erly Ch {Birth-3} (BSE)	EE01
El Ed (1-6) Sp Ed {K-12} (BSE)	EE03
Elem Ed 1-6 TESOL {K-12} (BSE)	EE04
Elem Ed-Business {1-6} (BSE)	EE05
Elem Ed-Sci {1-6} (BSE)	EE06
Elementary Ed-Art {1-6} (BSE)	EE07
Elementary Ed-Lang Art (BSE)	EE08
Elementary Ed-Math (BSE)	EE09
Elementary Ed-Music (BSE)	EE10
Elem Ed-Social Studies (BSE)	EE11
Elem Ed-Eng/Language Arts(BSE)	EE12
Elem Ed-Eng/Spanish(BSE)	EE13
Mid Sch-Eng/Soc Stdy (BSE)	EM00
Mid Sch-Bus/Eng {5-9} (BSE)	EM01
Mid Sch-Bus/Soc {5-9} (BSE)	EM02
Mid Sch-Eng/Math {5-9} (BSE)	EM05
Mid School-Eng/Sci {5-9} (BSE)	EM06
Mid School-Id Tc Soc {5-9} (BSE)	EM07
Mid School-Ind Tc Eng {5-9} (BSE)	EM09
Mid School-Math/Bus {5-9} (BSE)	EM10
Mid Sch-Math/In Tv {5-9} (BSE)	EM11
Mid Sch-Math/Sp&Th {5-9} (BSE)	EM12
Mid School-Soc Stu Mth (BSE)	EM13
Mid Sch-Sci/Math {5-9} (BSE)	EM14
Mid Sch-Sci/Bus {5-9} (BSE)	EM15
Mid Sch-Sci/Ind Tc {5-9} (BSE)	EM16
Mi Sch-Soc Stu /Sc {5-9} (BSE)	EM17
Mid Sch-Sp Th En {5-9} (BSE)	EM18
Mid Sch-Sp&Th/Scie{5-9} (BSE)	EM19
Mi Sch-Sp&Th/Socst {5-9} (BSE)	EM20
Mid Sch-Math (BSE)	EM21
Mid Sch-Comm Arts/English(BSE)	EM22
Mid Sch-Science (BSE)	EM23
Mid Sch-Social Studies (BSE)	EM24
Sec Ed-Bio/Unifd Sci 9-12(BSE)	ES00
Sec Ed-Chem/Unif Sci 9-12(BSE)	ES01
Sec Ed-Phys Unif Sci 9-12(BSE)	ES02
Sec Ed-Soc Sci-Soclg9-12(BSE)	ES03
Sec Ed-Chemistry {9-12} (BSE)	ES04
Sec Ed-German {K-12} (BSE)	ES05
Sec Ed-Phys Ed {K-12} (BSE)	ES06
Sec Ed-Physics {9-12} (BSE)	ES07
Secondary Ed-Art {K-12}(BSE)	ES08
Secondary Ed-Biology 9-12(BSE)	ES09
Secondary Ed-Bus 9-12 (BSE)	ES10
Sec Ed-Double Music K-12(BSE)	ES11

<i>School of Education</i>	
Secondary Ed-Eng 9-12 (BSE)	ES12
Secondary Ed-French K-12 (BSE)	ES13
Sec Ed-Instrumental K-12 (BSE)	ES14
Secondary Ed-Math 9-12 (BSE)	ES15
Sec Ed-Piano-Inst (BSE)	ES16
Second Ed-Piano-Vocal (BSE)	ES17
Sec Ed-Soc & Pol Sci 9-12(BSE)	ES18
Sec Ed-Soc Sci/History 9-12BSE	ES19
Secondary Ed-Spanish K-12(BSE)	ES20
Sec Ed-Speech & Drama (BSE)	ES21
Secondary Ed-Vocal K-12 (BSE)	ES22
Sec Ed-Ind Tech {9-12} (BSE)	ES23
Instruct Tech-NMSU (MSE)	GR00
MA Teaching-MSU (MAT)	GR01
Early Childhood-NWMSU (MSE)	GR06
Curriculum & Instruction (MSED)	GR08

<i>School of Health Sciences</i>	
Dental Hygiene (AS)	DH00
Dental Hygiene Applicnt (AS)	DH01
MS in Nursing-UMKC (MSN)	GR02
MS in Dental Hyg-UMKC (MS)	GR03
Health Science-Dental Hyg (BS)	HS01
Health Science-Rad Tech (BS)	HS02
Health Science-Res Ther (BS)	HS03
Health Science-Business (BS)	HS05
Health Science-Paramedic (BS)	HS06
Medical Tech (BS)	MT00
Pre Medical Tech (BS)	MT01
Nursing (BS)	NU00
Nursing Applicant (BS)	NU01
Emergency Med Tech (Certif)	PA80
Paramedic (Certif)	PA81
Radiologic Tech Applicant (AS)	RA00
Radiologic Technol (AS)	RA01
Respiratory Therapy (AS)	RE00
Resp Thpy Applicant (AS)	RE01

<i>Multi-Interdisciplinary</i>	
Bachelor of Gen Studies (BGS)	BG00

<i>No College Designated</i>	
No Major	0000
Degree Seeking-Undeclared	OT01
Special Post-Grad	OT02

Sources: Fall 2014 Schedule Book

**Number of Degrees Conferred by Program and Award Level
(Smr 2013, Fall 2013 & Spg 2014)**

Category *	Associate		Bachelor's		Master's		CIP 2010 Categories
	Count	Percentage	Count	Percentage	Count	Percentage	
Communication/ journalism	0	0.0%	21	2.6%	0	0.0%	9
Computer and information sciences	20	11.1%	21	2.6%	0	0.0%	11
Education	0	0.0%	89	11.1%	4	11.1%	13
Engineering technologies	8	4.4%	4	0.5%	0	0.0%	15
Foreign languages, literatures, and linguistics	0	0.0%	18	2.2%	0	0.0%	16
Legal Professions and Studies	0	0.0%	1	0.1%	0	0.0%	22
English	0	0.0%	13	1.6%	0	0.0%	23
Liberal arts/general studies	0	0.0%	83	10.3%	0	0.0%	24
Biological/life sciences	0	0.0%	50	6.2%	0	0.0%	26
Mathematics and statistics	0	0.0%	10	1.2%	0	0.0%	27
Kinesiology	0	0.0%	21	2.6%	0	0.0%	31
Physical sciences	0	0.0%	8	1.0%	0	0.0%	40
Psychology	0	0.0%	19	2.4%	0	0.0%	42
Criminal Justice	89	49.5%	98	12.2%	12	33.3%	43
Social sciences	0	0.0%	29	3.6%	0	0.0%	45
Visual and performing arts	0	0.0%	19	2.4%	0	0.0%	50
Health professions and related programs	63	35.0%	109	13.6%	18	50.0%	51
Business/marketing	0	0.0%	188	23.4%	2	5.6%	52
History	0	0.0%	3	0.4%	0	0.0%	54
	180	100%	804	100%	36	100%	

* Students awarded multiple degrees within the same program classification (6-digit CIP) and award category can only be counted once according to IPEDS instructions.

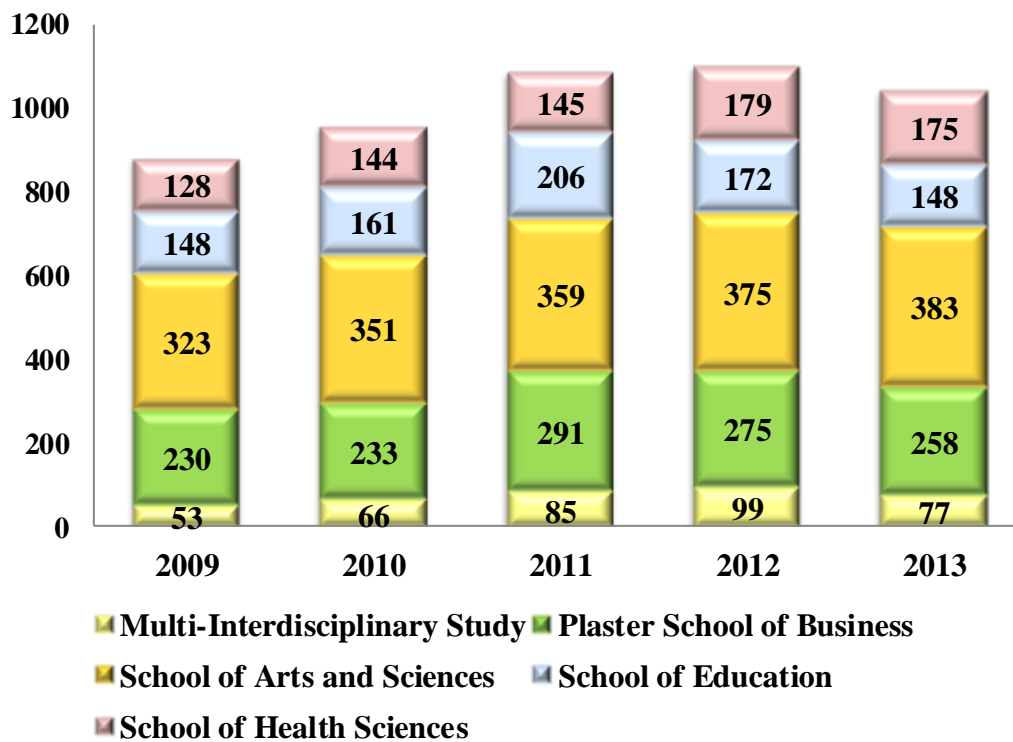
Sources: IPEDS Completions Surveys

Number of Undergraduate Degrees Awarded by School by Academic Year (Fall, Spring & Summer)

School	2009	2010	2011	2012	2013
Multi-Interdisciplinary Study	53	66	85	99	77
Plaster School of Business	230	233	291	275	258
School of Arts and Sciences	323	351	359	375	383
School of Education	148	161	206	172	148
School of Health Sciences	128	144	145	179	175
Grand Total of all Schools	882	955	1,086	1,100	1,041

Note: The degrees awarded by academic year may not match what is reported in IPEDS, which reports degrees awarded based on Summer, Fall & Spring.

Number of Undergraduate Degrees Awarded by School by Academic Year (Fall, Spring & Summer)



Sources: Banner query on 2/20/2014

**Number of Undergraduate Degrees Awarded by Department by
Academic Year (Fall, Spring & Summer)**

Department	2009	2010	2011	2012	2013	Total
Accounting	45	42	54	55	57	253
Art	13	13	9	14	2	51
Art & Science Extra					1	1
Biology-Environmental Health	46	52	38	53	72	261
Communication	28	32	36	29	27	152
Computer Information Science	33	38	36	35	48	190
Criminal Justice	152	158	179	188	191	868
Dental Hygiene	38	43	42	43	37	203
Engineering Technology	6	16	16	23	18	79
English and Philosophy	19	21	17	18	12	87
Finance & Economics	17	17	21	23	11	89
Foreign Languages	14	16	18	12	13	73
General Business	18	21	18	18	17	92
Health Science	32	32	44	66	62	236
International Business	15	11	15	13	7	61
International Studies	5	1	8	6	4	24
Kinesiology	17	21	22	15	24	99
Marketing and Management	96	88	131	108	100	523
Mathematics	3	11	4	7	6	31
Medical Technology		2	2		3	7
Multi-Interdisciplinary Study	53	66	85	99	77	380
Music	6	5	5	5	6	27
Nursing	37	44	34	49	47	211
Physical Science	5	11	9	11	10	46
Psychology	33	29	47	40	22	171
Radiology Technology	9	7	9	8	8	41
Respiratory Therapy	12	16	14	13	18	73
Social Science	28	25	32	27	35	147
Teacher Education	98	111	137	117	102	565
Theatre	4	6	4	5	4	23
Grand Total of all Departments	882	955	1,086	1,100	1,041	5,064

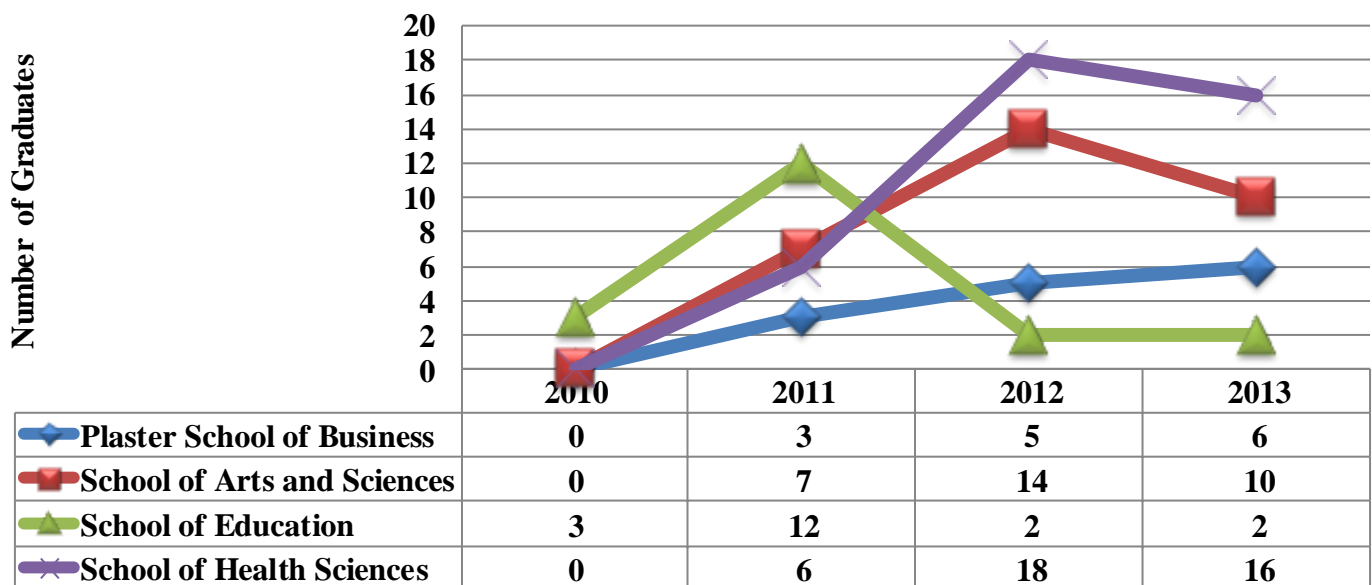
Note: The degrees awarded by academic year may not match what is reported in IPEDS, which reports degrees awarded based on Summer, Fall & Spring.

Number of Graduate Degrees Awarded by School by Academic Year (Fall, Spring & Summer)

School/Department	2010	2011	2012	2013
Plaster School of Business				
<i>Business Extra</i>	0	3	5	6
School of Arts and Sciences				
Criminal Justice	0	7	14	10
School of Education				
<i>Teacher Education</i>	3	12	2	2
School of Health Sciences				
<i>Dental Hygiene</i>	0	0	0	1
<i>Nursing</i>	0	6	18	15
Grand Total	3	28	39	34

Note: The degrees awarded by academic year may not match what is reported in IPEDS, which reports degrees awarded based on Summer, Fall & Spring.

Number of Graduate Degrees Awarded by Each School by Academic Year (Fall, Spring & Summer)



Retention and Graduation

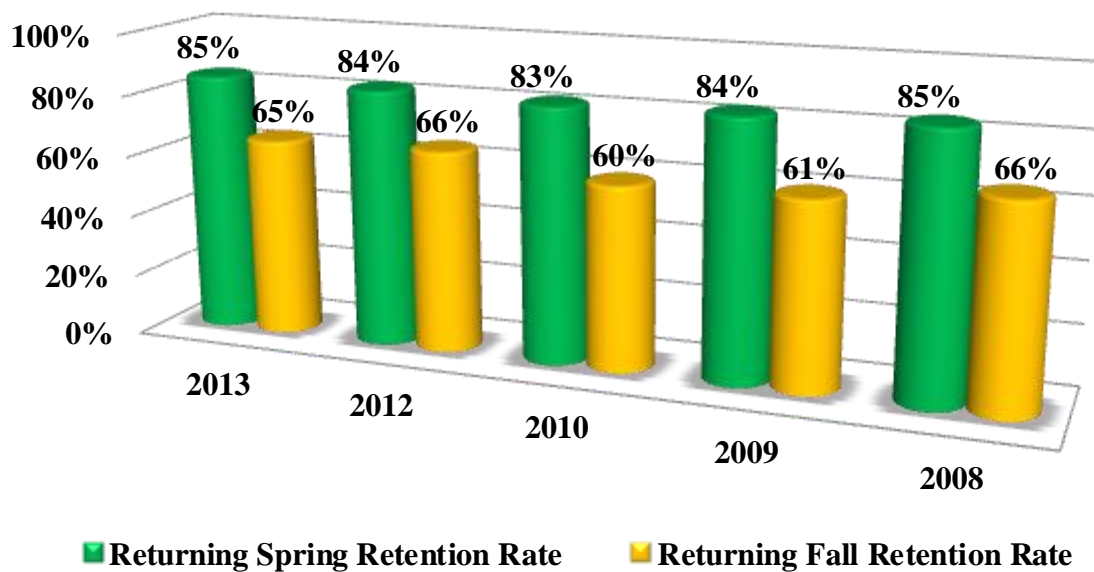


Fall First-Time, Full-Time Bachelor's Seeking Retention Rates

Fall	First-Time, Full-Time Bachelor's Seeking Students	Total Exclusions	Adjusted Subcohort	Students Returning in Subsequent Spring	Students Returning in Subsequent Fall	Returning Spring Retention Rate	Returning Fall Retention Rate
2013	687	0	687	582	449	85%	65%
2012	704	4	700	588	463	84%	66%
2011	665	0	665	555	402	83%	60%
2010	789	2	787	650	470	83%	60%
2009	780	1	779	657	477	84%	61%
2008	681	0	681	580	452	85%	66%
2007	769	2	767	627	485	82%	63%

Exclusions are students who died or became permanently disabled or who left school to serve in the armed forces, a foreign aid service of the Federal Government or on an official church mission.

Fall First-Time, Full-Time Bachelor's Seeking Retention Rates

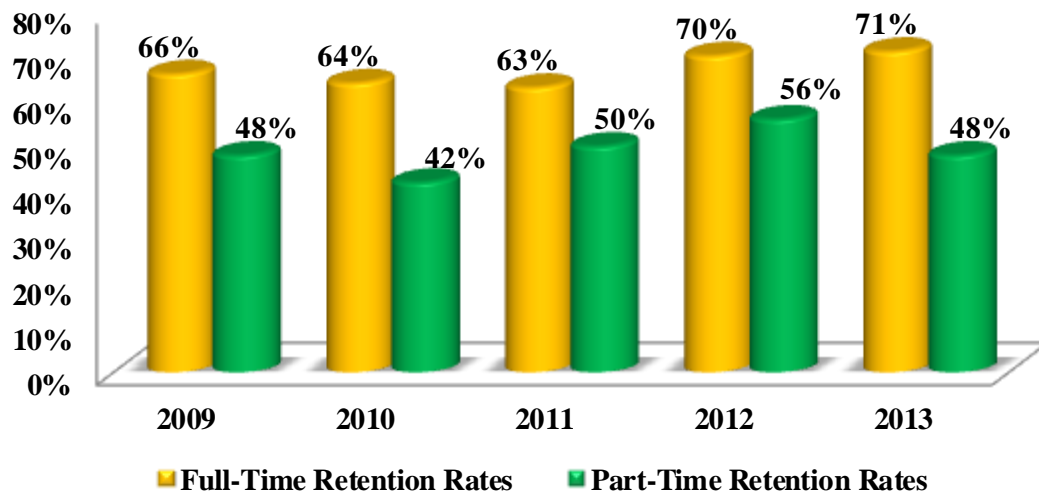


Sources: IPEDS Fall Enrollment Surveys (Fall 2013 statistics tentative until end of March 2014)

Fall First-Time Transfer Student Retention Rates

Overall First-Time, Full-Time Transfer Student Retention Rates					
	Cohort Year				
	2009	2010	2011	2012	2013
First-time, Full-time Transfer Retention Rates	66%	64%	63%	70%	71%
Number of students in the Adjusted Cohort	432	487	459	478	456
Number of cohort still enrolled in subsequent fall	283	313	291	334	322
Overall First-Time, Part-Time Transfer Student Retention Rates					
	Cohort Year				
	2009	2010	2011	2012	2013
First-time, Part-time Transfer Retention Rates	48%	42%	50%	56%	48%
Number of students in the Adjusted Cohort	157	117	117	103	126
Number of cohort still enrolled in subsequent fall	75	49	58	58	61

Fall First-Time Transfer Student Retention Rates



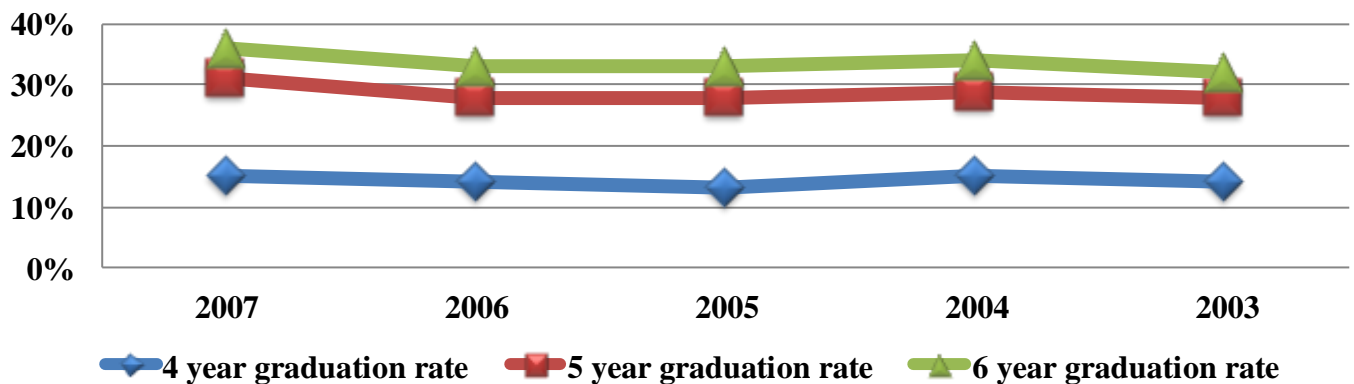
Sources: Census data

Fall First-Time, Full-Time Bachelor's Seeking Student Graduation Rates

Bachelor's Seeking Sub cohort Year	Bachelor's Seeking Sub cohort	Total Exclusions	Adjusted Sub cohort	Completed bachelor's degree in 4 or less years	Completed bachelor's degree in 5 or less years	Completed bachelor's degree in 6 or less years	4 year graduation rate	5 year graduation rate	6 year graduation rate
2007	738	3	735	110	228	265	15%	31%	36%
2006	787	3	784	106	218	259	14%	28%	33%
2005	792	3	789	106	221	260	13%	28%	33%
2004	656	1	655	97	189	220	15%	29%	34%
2003	528	0	528	76	148	169	14%	28%	32%
2002	564	2	562	79	150	177	14%	27%	31%
2001	730	4	726	117	200	236	16%	28%	28%
2000	734	0	734	128	234	256	17%	32%	35%
1999	755	4	751	103	215	242	14%	29%	32%
1998	802	0	802	95	212	243	12%	26%	30%
1997	645	1	644	61	160	194	10%	25%	30%
1996	660	0	660	77	178	220	12%	27%	33%
1995	663	2	661	77	179	217	12%	27%	33%

Exclusions are students who died or became permanently disabled or who left school to serve in the armed forces, a foreign aid service of the Federal Government or on an official church mission.

Fall First-Time, Full-Time Bachelor's Seeking Student Graduation Rates



Sources: IPEDS Graduation Rate Surveys

Faculty and Staff



Faculty Profile

	2009-2010		2010-2011		2011-2012		2012-2013		2013-2014	
Faculty										
Full Time	208	71%	207	66%	206	67%	196	63%	197	64%
Part Time	87	29%	105	34%	100	33%	117	37%	113	36%
Total	295	100%	312	100%	306	100%	313	100%	310	100%
Academic Rank (FT)										
Professor	69	33%	71	34%	70	34%	71	36%	72	37%
Assoc. Professor	50	24%	45	22%	43	21%	42	21%	45	23%
Asst. Professor	65	31%	68	33%	71	34%	65	33%	64	32%
Instructor	24	12%	23	11%	22	11%	18	9%	16	8%
Total	208	100%	207	100%	206	100%	196	100%	197	100%
Gender										
Male	169	57%	180	58%	163	53%	164	52%	162	52%
Female	126	43%	132	42%	143	47%	149	48%	148	48%
Total	295	100%	312	100%	306	100%	313	100%	310	100%
Highest Degrees (FT)										
Doctorate (or Equivalent)	120	58%	132	64%	126	61%	120	61%	123	62%
Masters	79	38%	65	31%	68	33%	67	34%	65	33%
Bachelor's	8	4%	10	5%	12	6%	9	5%	9	5%
Associate's	1	0%								
Total	208	100%	207	100%	206	100%	196	100%	197	100%
Tenure Status (FT)										
Tenured	125	60%	127	61%	124	60%	122	62%	122	62%
Tenure-Track	34	16%	27	13%	20	10%	18	9%	15	8%
Non-Tenure-Track	49	24%	53	26%	62	30%	56	29%	60	30%
Total	208	100%	207	100%	206	99%	196	94%	197	95%
Race/Ethnicity										
International	4	1%	4	1%	4	1%	4	1%	7	2%
Hispanic/Latino	6	2%	6	2%	5	2%	7	2%	7	2%
American Indian or Alaska Native	5	2%	6	2%	6	2%	8	3%	10	3%
Asian	4	1%	3	1%	3	1%	3	1%	4	1%
Black or African American	6	2%	5	2%	5	2%	4	1%	6	2%
White	270	92%	287	92%	282	92%	286	91%	272	88%
Race and ethnicity unknown	0	0%	1	0%	1	0%	1	0%	4	1%
Total	295	100%	312	100%	306	100%	313	100%	310	100%

Source: IPEDS Human Resources and Common Data Set

Excludes adjunct faculty with a part-time/overload contracts for student teaching supervision, clinical supervision, internships & music lessons.

Full-Time Faculty by Rank and Gender, Fall 2013

Home Organizations	Professor		Associate		Assistant		Instructor	
	Male	Female	Male	Female	Male	Female	Male	Female
Accounting	3					1		1
Art General			2	2	1	1		
Biology-Environmental Health	4	3	2	1	3	4		
Chemical and Physical Science	4	1		1	4			
Communication General			2			5		
Computer Aided Drafting & Design			1					
Computer Information Science	4		2					
Criminal Justice		1	4		1		1	
Dental Hygiene						4		5
EMT Paramedic							1	
Engineering Technology				1	1	1		
English and Philosophy	6	4	2			1		
Finance and Economics	2		1		1			
Foreign Language	2	1	1			3		
International English Program					1	2		
Kinesiology		1	1	1		3		
Management	2	2	2	1			2	1
Marketing	1		1		1			1
Mathematics	5	2	1		1			1
Men's Baseball							1	
Men's Basketball					1			
Music	4	1		1	3	2		
Nursing		1		3		7		
Psychology	2	2	1	1		2		
Radiology			1					
Social Science	5	1	2	1	3	1		
Student Success Center	1							
Teacher Education	2	4	1	3		3		1
Theatre		1	2		1	1		
Women's Softball							1	
Women's Track and Cross Country						1		
Grand Total	47	25	29	16	22	42	6	10

Sources: IPEDS Human Resources Survey

Full-Time Faculty by Highest Degree and Gender, Fall 2013

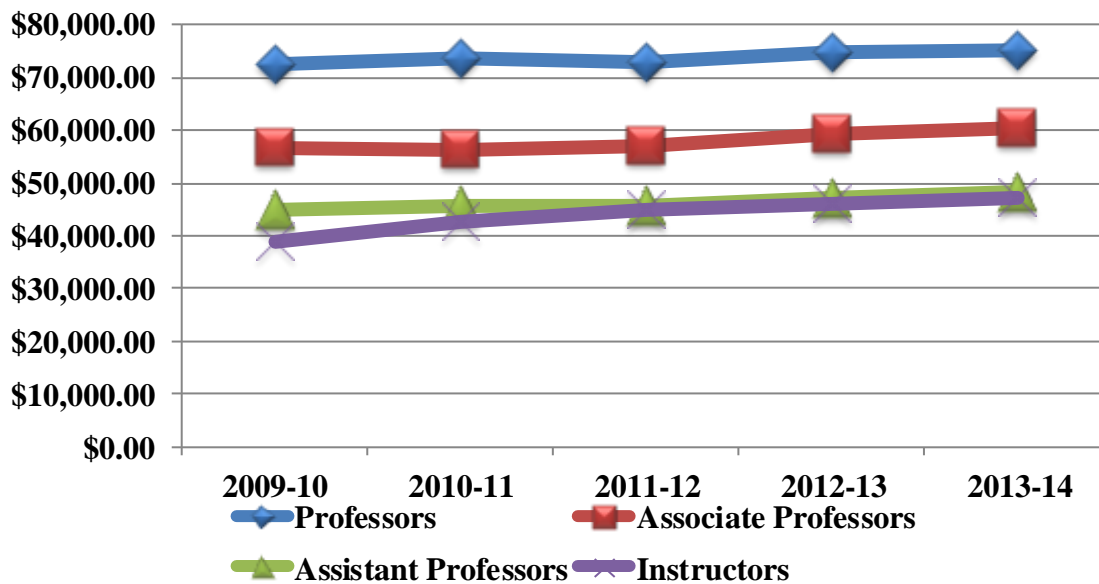
Home Organization	Doctorate and Terminal		Masters		Bachelors		Total	
	Male	Female	Male	Female	Male	Female	Male	Female
Accounting	3			2			3	2
Art General			3	3			3	3
Biology-Environmental Health	7	8	2				9	8
Chemical and Physical Science	7	2	1				8	2
Communication General		1	2	4			2	5
Computer Aided Drafting & Design	1						1	0
Computer Information Science	2		4				6	0
Criminal Justice	3	1	2		1		6	1
Dental Hygiene		1		1		7	0	9
EMT Paramedic					1		1	0
Engineering Technology		1	1	1			1	2
English and Philosophy	6	5	2				8	5
Finance and Economics		4					0	4
Foreign Language	3	2		2			3	4
International English Program			1	2			1	2
Kinesiology		3	1	2			1	5
Management	3	3	3	1			6	4
Marketing	2		1	1			3	1
Mathematics	6	2	1	1			7	3
Men's Baseball			1				1	0
Men's Basketball			1				1	0
Music	6	3	1	1			7	4
Nursing		3		8			0	11
Psychology	3	4		1			3	5
Radiology			1				1	0
Social Science	10	3					10	3
Student Success Center	1						1	0
Teacher Education	3	10		1			3	11
Theatre	1		2	2			3	2
Women's Softball			1				1	0
Women's Track and Cross Country				1			0	1
Total	67	56	31	34	2	7	100	97

Sources: IPEDS Human Resources Surveys

Average Full-Time Faculty Salary by Rank

Academic Rank	2009-10	2010-11	2011-12	2012-13	2013-14
Professors	\$72,741.62	\$73,699.30	\$72,886.09	\$74,999.91	\$75,315.03
Associate Professors	\$56,745.56	\$56,267.64	\$57,013.70	\$59,491.30	\$60,397.21
Assistant Professors	\$45,059.18	\$45,545.31	\$45,820.06	\$47,344.29	\$48,282.60
Instructors	\$38,820.75	\$42,779.27	\$44,906.23	\$46,081.02	\$47,098.29

Average Full-Time Faculty Salary by Rank



Sources: AAUP Surveys

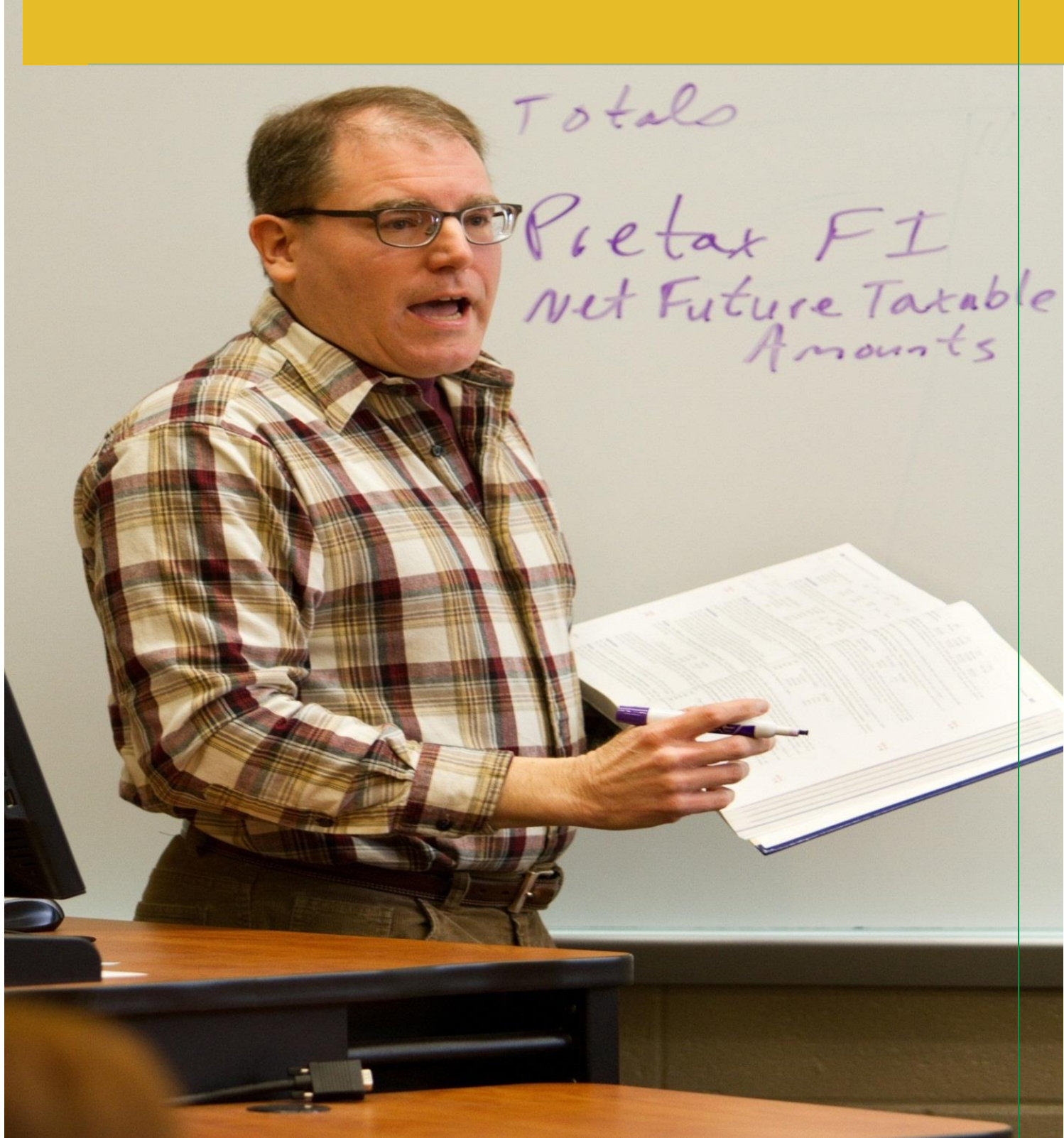
Faculty/Staff by Gender and Race/Ethnicity as of November 1

Ethnicity/Race	2009	2010	2011	2012	2013
Male, Full-Time					
International	2	1	1	0	2
Hispanic/Latino	8	6	6	6	6
American Indian or Alaska Native	6	5	4	3	2
Asian	2	2	2	2	2
Black or African American	5	8	6	5	10
Native Hawaiian or Other Pacific Islander	0	0	0	0	0
White	239	245	241	233	226
Two or more races	0	0	0	0	1
Race and ethnicity unknown	0	0	1	1	2
Male, Full-Time Total	262	267	261	250	251
Female, Full-Time					
International	2	1	3	4	3
Hispanic/Latino	3	2	3	3	3
American Indian or Alaska Native	4	4	4	5	6
Asian	0	0	0	0	0
Black or African American	6	6	5	5	6
Native Hawaiian or Other Pacific Islander	0	0	0	0	0
White	229	240	234	252	245
Two or more races	0	0	0	0	0
Race and ethnicity unknown	0	0	0	0	0
Female, Full-Time Total	244	253	249	269	263
Full-Time Total	506	520	510	519	514
Male, Part-Time					
International	0	0	0	1	1
Hispanic/Latino	2	2	2	2	3
American Indian or Alaska Native	2	1	1	3	4
Asian	1	1	1	1	1
Black or African American	1	0	0	1	0
Native Hawaiian or Other Pacific Islander	0	0	0	0	0
White	48	59	53	60	53
Two or more races	0	0	0	0	0
Race and ethnicity unknown	0	1	0	0	1
Male, Part-Time Total	54	64	57	68	63
Female, Part-Time					
International	1	2	0	0	2
Hispanic/Latino	2	3	2	4	3
American Indian or Alaska Native	0	1	1	0	1
Asian	2	1	1	0	1
Black or African American	1	1	0	1	1
Native Hawaiian or Other Pacific Islander	0	0	0	0	0
White	69	71	74	87	73
Two or more races	0	0	0	0	0
Race and ethnicity unknown	0	0	0	0	1
Female, Part-Time Total	75	79	78	92	82
Part-Time Total	129	143	135	160	145
Grand Total	635	663	645	679	659

Source: IPEDS Human Resources and Common Data Set

Excludes adjunct faculty with a part-time/overload contracts for student teaching supervision, clinical supervision, internships & music lessons. It also excludes contract staff, seasonal staff, seminar instructors, undergraduate students, work-study students and personnel being paid by another entity.

Teaching and Learning



Number of Fall Class Sections with Undergraduates Enrolled

Undergraduate Class Size						
CLASS SECTIONS	2-9	10-19	20-29	30-39	40+	Total
2010	143	270	319	108	21	861
2011	136	302	276	131	11	856
2012	137	286	217	106	21	767
2013	122	281	226	171	19	819
2014	127	277	238	169	11	822

Class Sections: A class section is an organized course offered for credit, identified by discipline and number, meeting at a stated time or times in a classroom or similar setting, and not a subsection such as a laboratory or discussion session. Undergraduate class sections are defined as any sections in which at least one degree-seeking undergraduate student is enrolled for credit. Exclude distance learning classes and noncredit classes and individual instruction such as dissertation or thesis research, music instruction, or one-to-one readings. Exclude students in independent study, co-operative programs, internships, foreign language taped tutor sessions, practicums, and all students in one-on-one classes. Each class section should be counted only once and should not be duplicated because of course catalog cross-listings.

CLASS SUB-SECTIONS	2-9	10-19	20+			Total
2010	5	3	1			9
2011	9	2	1			12
2012	4	2	1			7
2013	6	2	1			9
2014	2	2	2			6

Class Subsections: A class subsection includes any subsection of a course, such as laboratory, recitation, and discussion subsections that are supplementary in nature and are scheduled to meet separately from the lecture portion of the course. Undergraduate subsections are defined as any subsections of courses in which degree-seeking undergraduate students enrolled for credit. As above, exclude noncredit classes and individual instruction such as dissertation or thesis research, music instruction, or one-to-one readings. Each class subsection should be counted only once and should not be duplicated because of cross-listings.

Sources: Common Data Set

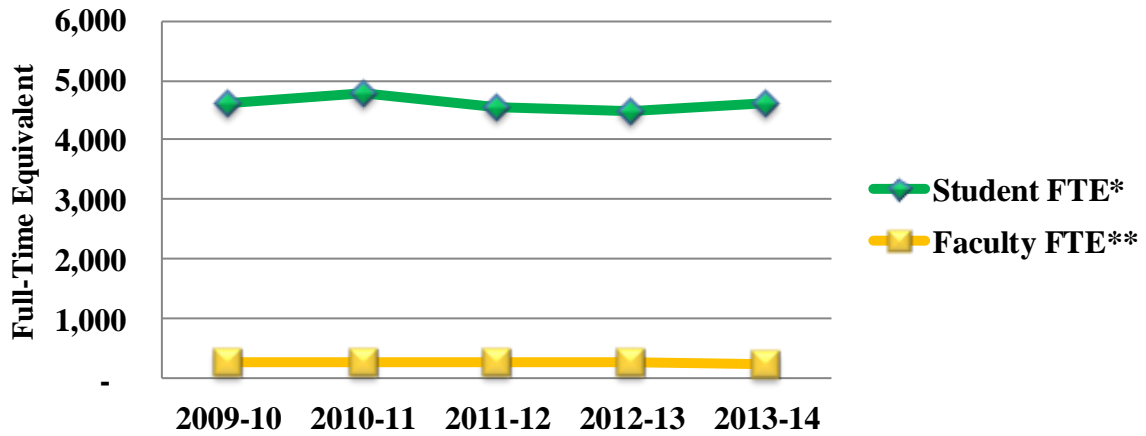
Undergraduate Student To Faculty Ratio

Year	Student FTE*	Faculty FTE**	Student/Faculty Ratio
2009-10	4,620	248	19 to 1
2010-11	4,772	248	19 to 1
2011-12	4,533	254	18 to 1
2012-13	4,465	247	18 to 1
2013-14	4,623	245	19 to 1

* Student FTE is calculated by adding full-time undergraduate students plus part-time undergraduate students times .33

**Faculty FTE is calculated by adding full-time faculty plus (part-time instructional staff + administrators and other staff teaching credit courses times .33)

Undergraduate Student and Faculty FTE



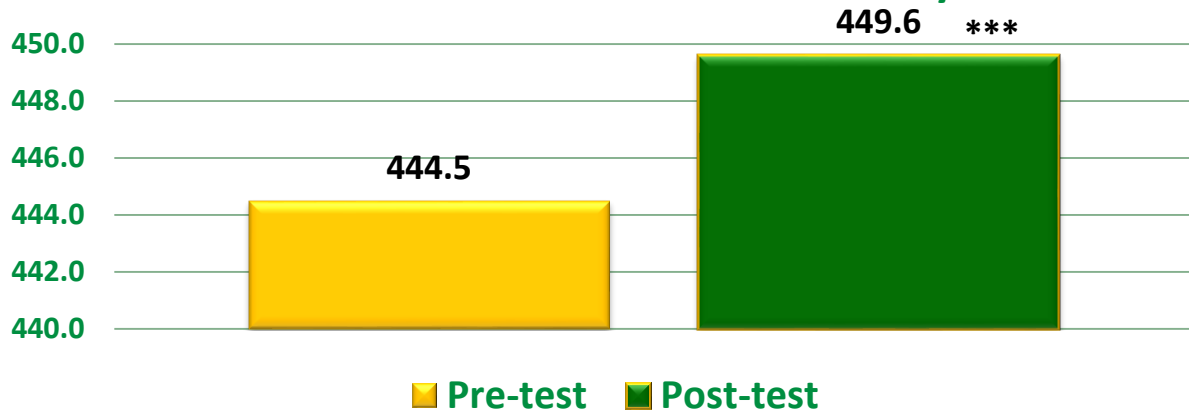
Sources: IPEDS Fall Enrollment Surveys

Student Classification by Semester, Courses Taken and Course Credit Hours

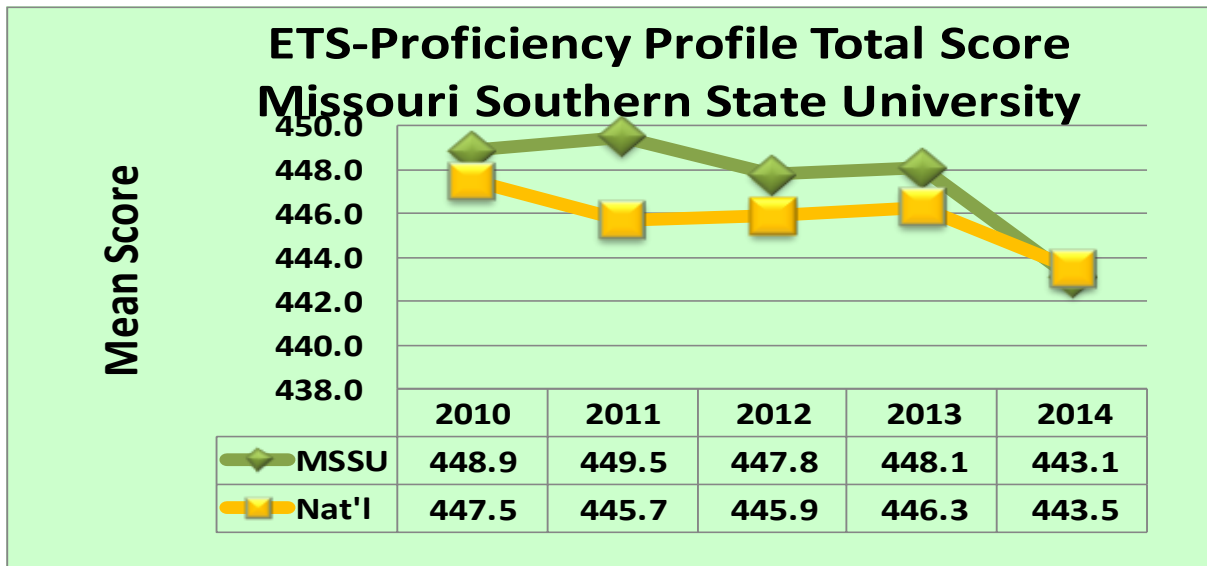
Student Classification	Number of Students	Total Courses Taken	Total Course Credit Hours	Number of Students	Total Courses Taken	Total Course Credit Hours	Number of Students	Total Courses Taken	Total Course Credit Hours
	Fall 2012			Fall 2013			Fall 2014		
Special ND Status	373	607	1,875	455	796	2,407	485	861	2,710
Freshman	1,476	6,385	18,946	1,497	6,379	19,337	1,478	6,147	19,095
Sophomore	961	4,026	12,218	950	3,929	11,928	948	3,831	11,876
Junior	1,031	4,382	13,030	1,117	4,694	13,971	1,119	4,657	14,163
Senior	1,388	5,608	16,965	1,395	5,539	16,746	1,417	5,615	16,982
Post Grad/UG Deg Seek	122	315	1,070	173	436	1,442	114	339	1,071
Graduate/Masters	66	86	255	29	44	131	52	81	266
Total	5,417	21,409	64,359	5,616	21,817	65,962	5,613	21,531	66,163
	Spring 2012			Spring 2013			Spring 2014		
Special ND Status	257	383	1,054	298	517	1,491	331	560	1,596
Freshman	1,165	4,759	14,361	1,095	4,617	13,972	1,085	4,528	13,730
Sophomore	967	4,040	11,983	964	3,907	12,018	901	3,781	11,558
Junior	1,020	4,288	12,563	1,048	4,445	13,060	1,091	4,576	13,698
Senior	1,511	6,146	18,615	1,443	5,774	17,449	1,488	6,023	17,958
Post Grad/ UG Deg Seek	116	280	1,006	136	361	1,220	134	351	1,174
Graduate/Masters	61	92	328	68	98	392	42	62	284
Total	5,097	19,988	59,910	5,052	19,719	59,602	5,072	19,881	59,998
	Summer 2012			Summer 2013			Summer 2014		
Special ND Status	96	122	332	152	226	542	97	107	278
Freshman	228	394	1,171	216	386	1,141	172	281	847
Sophomore	244	393	1,254	269	423	1,373	221	360	1,165
Junior	349	614	1,877	380	680	2,114	380	656	2,015
Senior	697	1,259	3,839	694	1,221	3,732	741	1,299	4,016
Post Grad/ UG Deg Seek	50	70	218	65	89	301	56	91	281
Graduate/Masters	70	87	368	36	41	135	24	26	126
Total	1,734	2,939	9,059	1,812	3,066	9,338	1,691	2,820	8,728

Sources: Census data

ETS-Proiciency Profile Total Score Missouri Southern State University



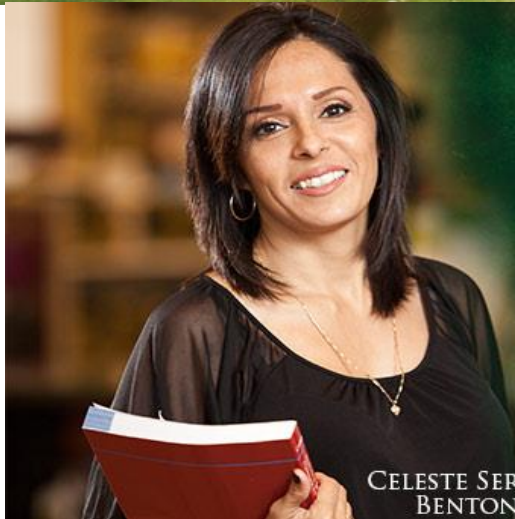
P=.000
Significance *p<.05,**p<.01,***p<.001



NUMBER OF STUDENTS

	2010	2011	2012	2013	2014
MSSU	803	811	762	757	774
Nat'l	42,649	44,177	44,177	44,978	35,036

University Financial Resources



LION PRIDE TUITION

NOW 10 lb
AR, KS, OK
& 10 lb
MAIL

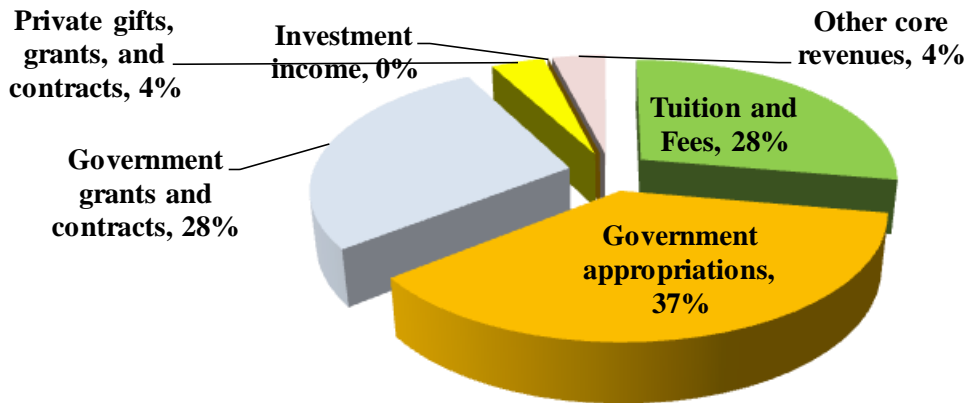
MSSU is open and inviting,
and the faculty are
genuine and supportive.
So worth the commute.

CELESTE SERRANO, SOCIOLOGY MAJOR
BENTONVILLE, ARKANSAS

Sources of Core Revenues, FY 2013

Revenue Source	Reported Values	Percent of total core revenues	Core revenues per FTE enrollment
Tuition and Fees	\$16,582,114	28%	\$3,721
Government appropriations	\$22,225,470	37%	\$4,988
Government grants and contracts	\$16,758,460	28%	\$3,761
Private gifts, grants, and contracts	\$2,199,603	4%	\$494
Investment income	\$109,598	0%	\$25
Other core revenues	\$2,227,305	4%	\$500
Total core revenues	\$60,102,550	100%	\$13,488
Total revenues	\$67,625,046		\$15,176

Core revenues include tuition and fees; government appropriations (federal, state, and local); government grants and contracts; private gifts, grants, and contracts; investment income; other operating and nonoperating sources; and other revenues and additions. Core revenues exclude revenues from auxiliary enterprises (e.g., bookstores, dormitories), hospitals, and independent operations.



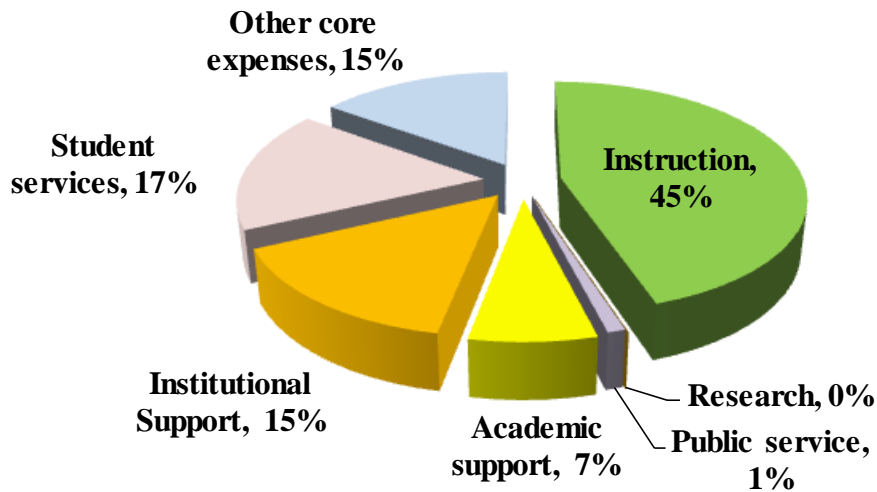
Sources of Core Expenses, FY 2013

Expense Function	Reported Values	Percent of total core expenses	Core expenses per FTE enrollment
Instruction	\$25,927,252	45%	\$5,819
Research	\$0	0%	\$0
Public service	\$822,168	1%	\$185
Academic support	\$4,010,544	7%	\$900
Institutional Support	\$8,529,224	15%	\$1,914
Student services	\$9,929,058	17%	\$2,228
Other core expenses	\$8,709,638	15%	\$1,955
Total core expenses	\$57,927,884	100%	\$13,000
Total expenses	\$66,810,633		\$14,993

Core expenses include expenses for instruction, research, public service, academic support, institutional support, student services, operation and maintenance of plant, depreciation, scholarships and fellowships expenses, other expenses, and nonoperating expenses.

Calculated value	
FTE enrollment	4,456

The full-time equivalent (FTE) enrollment used in this report is the sum of the institution's FTE undergraduate enrollment and FTE graduate enrollment (as calculated from or reported on the 12-month Enrollment). FTE is estimated using 12-month instructional activity (credit and/or contact hours). All doctor's degree students are reported as graduate students.

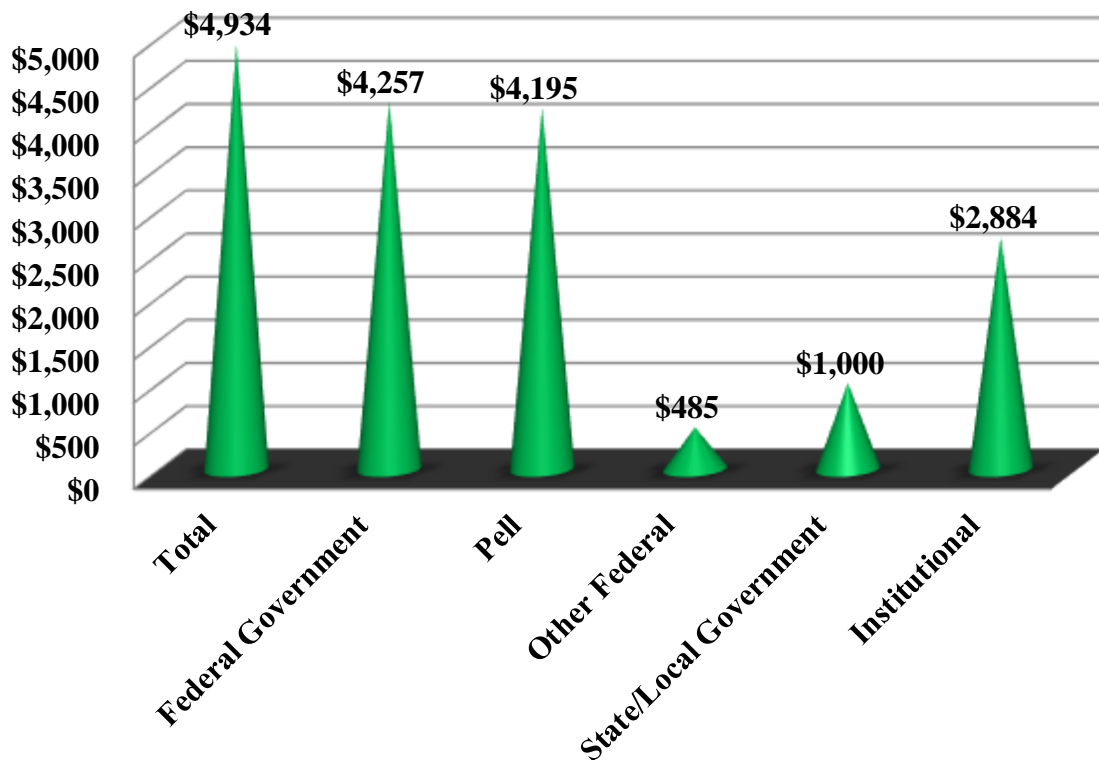


Sources: IPEDS Student Financial Aid Surveys

Distribution of Financial Aid by Award Type 2012-13

Total grant aid received by all undergraduate students	\$18,984,494	
Number of undergraduate students who received a Pell	3,247	
Percentage of First-time, Full-time (FTFT) students receiving any financial aid	93%	
	Percentage of FTFT students	Average amount of grant aid
Total	86%	\$4,934
Federal Government	56%	\$4,257
Pell	55%	\$4,195
Other Federal	8%	\$485
State/Local Government	38%	\$1,000
Institutional	55%	\$2,690

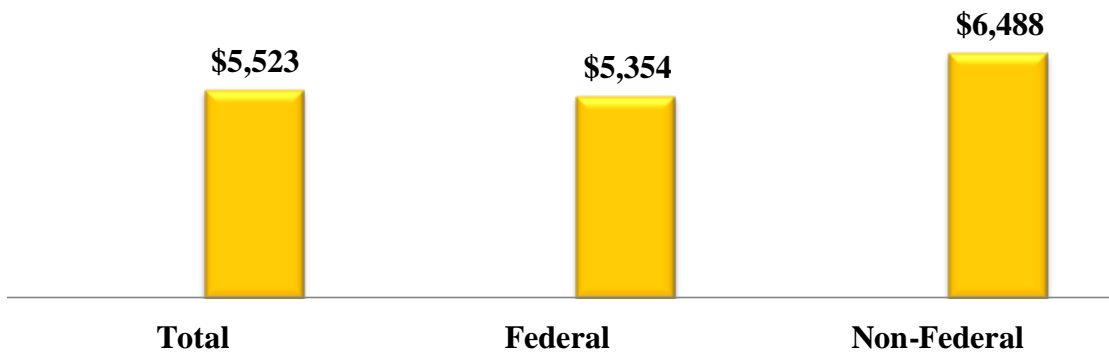
Average Amount of Financial Aid by Award Type 2012-13



Distribution of Financial Aid by Loan Source, 2012-13

	Percentage of first-time, full-time students receiving loans by type	Average amount of loans received by type
Total	57%	\$5,523
Federal	57%	\$5,354
Non-Federal	1%	\$6,488

Average Amount of Financial Aid by Loan Source, 2012-13



Undergraduate Pricing Information

Estimated expenses for academic year for full-time, first-time students		2010-11	2011-12	2012-13	2013-14	2014-15
	In-district tuition and fees	\$4,530	\$5,090	\$5,271	\$5,376	\$5,416
	In-state tuition and fees	\$4,530	\$5,090	\$5,271	\$5,376	\$5,416
	Out-of-state tuition and fees	\$8,532	\$9,654	\$10,017	\$10,225	\$10,450
	Books and supplies	\$800	\$520	\$410	\$465	\$761
	On Campus Room and Board	\$5,500	\$5,976	\$6,113	\$6,265	\$6,299
	On Campus Other Expenses	\$3,150	\$3,062	\$3,148	\$3,264	\$3,289
	Off Campus Room and Board	\$7,000	\$5,612	\$5,541	\$5,611	\$6,358
	Off Campus Other Expenses	\$3,750	\$3,888	\$5,226	\$3,868	\$3,874
	Off Campus with family Other Expenses	\$3,750	\$3,888	\$5,225	\$3,868	\$3,874
Average undergraduate student tuition and fees for academic year 2014-15						
		Tuition		Fees		
	In-district	\$5,196		\$566		
	In-state	\$5,196		\$566		
	Out-of-state	\$10,590		\$566		

Source: IPEDS Financial Aid

Facilities



Intramural Championship 2012



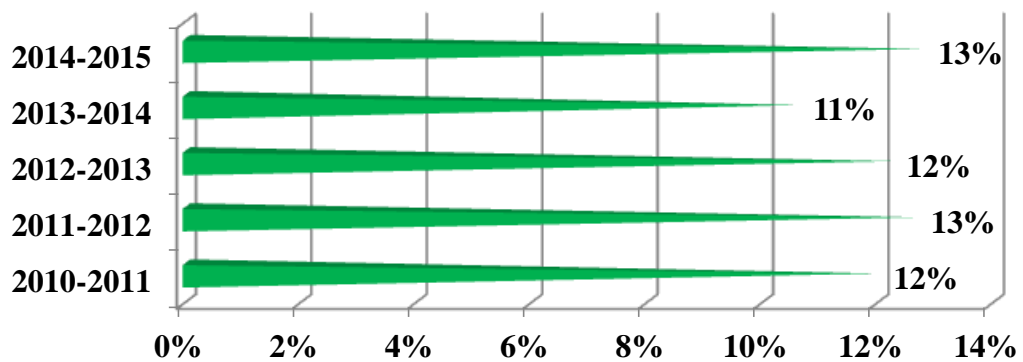
The trainers are legit!



Campus Housing Statistics

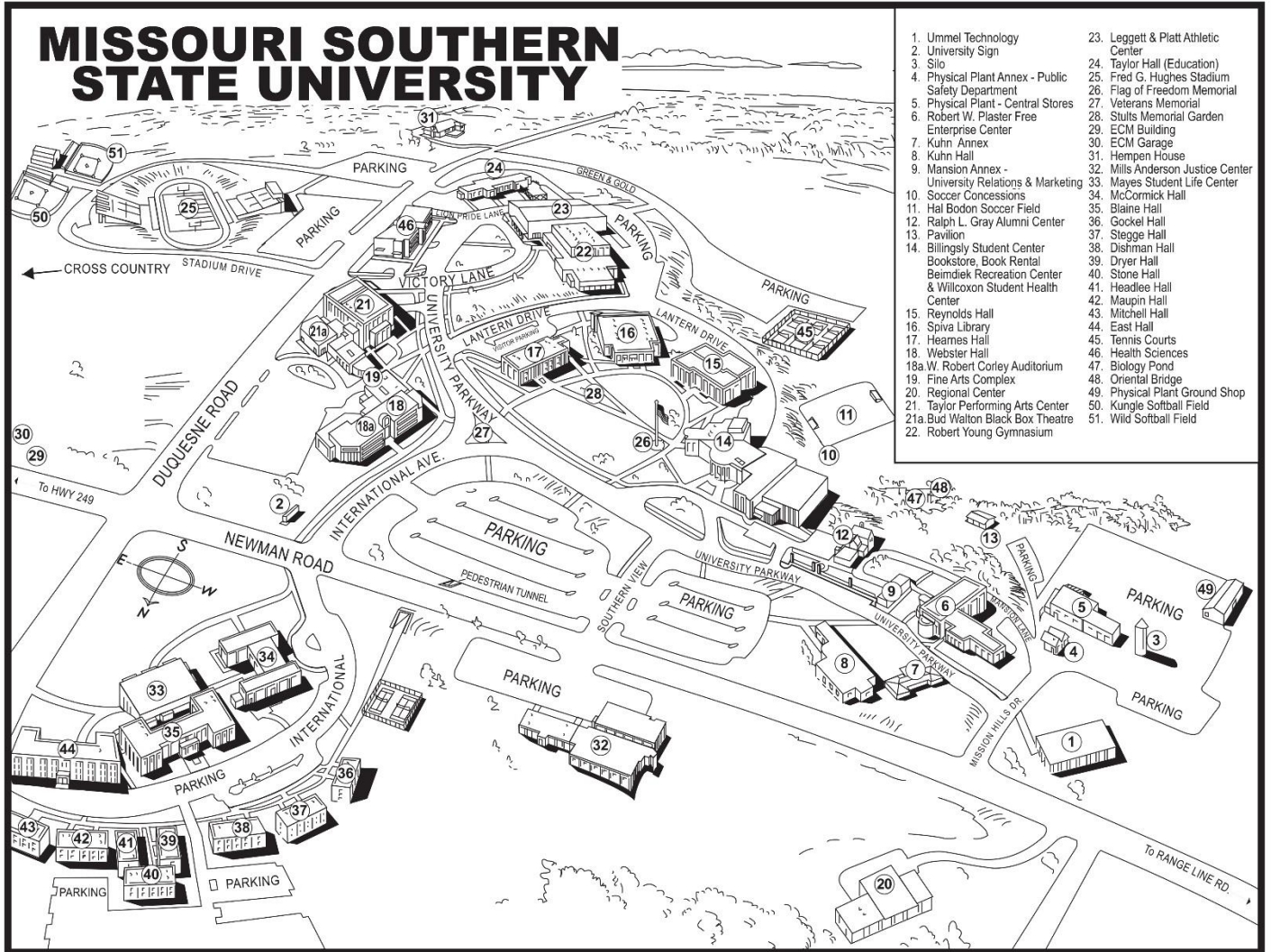
Year	Housing Capacity	Number Housed	Fall Enrollment	Percent Housed
2010-2011	710	697	5,802	12%
2011-2012	715	708	5,591	13%
2012-2013	715	663	5,417	12%
2013-2014	715	596	5,616	11%
2014-2015	722	718	5,613	13%

Percent in Campus Housing by Academic Year



Source: Residence Life and In-House Report

Campus Map



Campus Building Statistics

Year Built	Building Name	Gross Square Footage
1971	Anderson Public Safety Center *	78,062
1990	Backflow, Kuhn (Utility)	350
1991	Backflow, Tunnel (Utility)	350
1969	Billingsly Student Center **	128,114
1969	Blane Hall (Men's Dormitory)	34,200
1980	Chemical Storage	270
1980	Dishman Hall (Apartment C)	11,991
1980	Dryer Hall (Apartment D)	7,994
1940	E.C.M Bldg.	2,000
1950	E.C.M. Garage (Track Storage)	1,561
2001	East Hall (Residence Hall)	59,100
1967	Fine Arts Complex	59,028
1930	Fire Safety/Custodial Warehouse	2,255
1980	Gockel Hall (Apartment A)	7,994
1997	Grounds Shop	5,400
1980	Headlee Hall (Apartment E)	7,994
2010	Health Sciences Bldg.	83,545
1967	Hearnes Hall (Administration)	40,500
1970	Hempen House (Includes out-bldgs.)	4,000
1976	Hughes Stadium	
1990	ITFS Tower - Monett (Radio Tower)	
1963	Kuhn Annex (English)	2,520
1969	Kuhn Hall (English)	14,652
1986	KXMA Radio Tower & Transmitter Bldg.	
1999	Leggett & Platt Athletic Center	85,321
1981	Mansion Annex	2,611
1987	Maupin Hall (Apartment F)	7,994
1996	Mayes Student Life Center	30,675
1969	McCormick Hall (Women's Dormitory)	20,808
1987	Mitchell Hall (Apartment G)	8,277
1987	MSTV Tower & Transmitter Bldg.	
1967	Physical Plant & Greenhouse	17,169
2007	Physical Plant Warehouse	5,038
1980	Plaster Hall (Bus/Computer Science)	75,550
1930	Police Department	875
1928	Ralph L. Gray Alumni Center (Mansion)	8,700
1967	Reynolds Hall (Science & Math)	62,876
2002	Soccer Storage/Concessions Bldg.	440
1997	Softball Concessions Bldg.	1,521
1967	Spiva Library	100,181
1980	Stegge Hall (Apartment B)	11,991
1990	Stone Hall (Apartment H)	7,994
1975	Taylor Performing Arts Center	46,791
1977	Taylor Hall (Education)	31,205
1970	Ummel Technology	23,779
1992	Webster Hall (Social Science/Comm)	69,090
1968	Young Gymnasium/Multipurpose Bldg.	58,716
	TOTALS	1,229,482

* Includes Criminal Justice, Franklin Tech, MOCAP, & Learning Center

** Includes Conference Center, Rec Center, & Biemdek Health Center

Sources: Physical Plant Office

Library



Library Services, Collections & Personnel FY 2012-2013

Collections (Total):

Books	197,841
Government Documents	98,007
Bound Periodicals	10,993
Newspaper & Periodical Subscriptions	47,049
Microforms	783,369
Audio-Visuals	6,545
Ebooks	229,994
Internet Access Databases	76

Collections Added

Books	1,693
Government Documents	1,861
Bound Periodicals	-
Newspaper & Periodical Subscriptions	6
Microforms	1,192
Audio-Visuals	130
Internet Access Databases	2

Services:

Total Check Outs	12,840
Reference Transactions	6,960
Tours & Group Presentations	101

InterLibrary Loans:

Traditional Items Borrowed	185
Traditional Items Loaned	53
MOBIUS Books Borrowed	1,416
MOBIUS Books Loaned	2,448

Personnel:

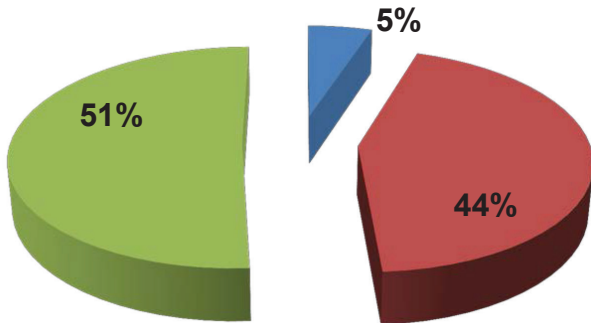
Library Faculty	7
FT Support Staff	7
PT Support Staff	10
PT Student-Workers	22

Sources: Spiva Library

Foundation

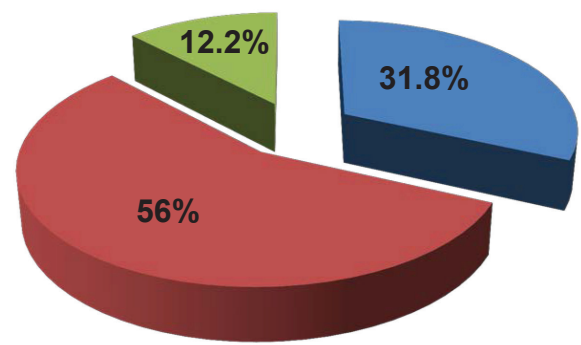


MISSOURI SOUTHERN FOUNDATION 2013 FINANCIAL REPORT



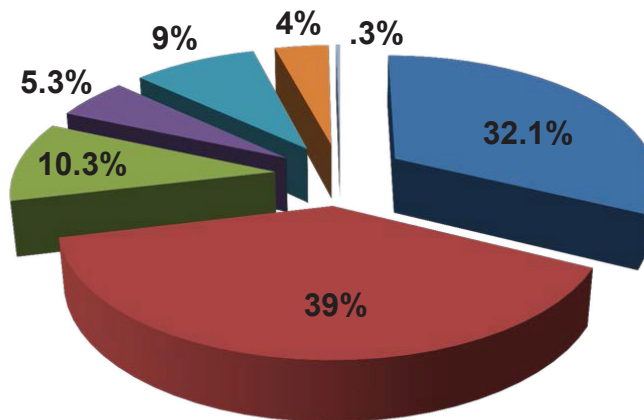
NET ASSETS

● Unrestricted	\$1,641,518
● Temporarily Restricted.....	\$14,038,777
● Permanently Restricted	\$16,298,234
Total Net Assets	\$31,978,529



REVENUE

● Contributions	\$1,052,033
● Investment Income	\$1,847,489
● Beneficial Interest in Trust.....	\$403,017
Total Revenue	\$3,312,539



EXPENSES

● Scholarships	\$635,610
● Faculty & Department Support.....	\$768,297
● Facilities Improvement.....	\$203,005
● General University Support.....	\$104,663
● Administration	\$176,236
● Fundraising	\$76,635
● Cultural Activities	\$5,448
Total Expenses	\$1,969,894

The audit of the financial statements for the year ending June 30, 2013 was conducted in accordance with generally accepted auditing standards and has been approved by the Budget and Audit Committee of the Missouri Southern Foundation Board.

Athletics



Athletics

GO LIONS!



The MSSU Lions compete in 12 different men's and women's sports in the highly competitive Mid-America Intercollegiate Athletics Association. This is an athletic department with history and promise.

Men's: Football, Basketball, Baseball, Golf, Cross Country, Indoor/Outdoor Track

Women's: Basketball, Softball, Soccer, Cross Country, Indoor/Outdoor Track, Volleyball

As of the 2012 Fall Semester, the Missouri Southern Athletic Department had 325 student-athletes on 14 team rosters. Of those athletes, 148 of them had a 3.0 GPA or higher, 62 had a 3.5 GPA or higher and 11 had a perfect 4.0 GPA.

During the 2012-13 season, Missouri Southern Athletics has produced:

148 MIAA Academic Honor Roll Members

13 MIAA Academic All-MIAA Members

11 MIAA Presidential Scholar Winners

45 All-MIAA Athletes

19 All-Region Athletes

9 All-Americans

10 Academic All-Americans

Brandon Williams

Drafted by the Baltimore Ravens,
Spring 2013



**MEN'S CROSS COUNTRY 2ND PLACE REGIONAL FINISH
and 8TH PLACE NATIONAL FINISH**

MIAA BASEBALL CHAMPIONS

**WOMEN'S CROSS COUNTRY
20TH PLACE NATIONAL FINISH**

MIAA WOMEN'S CROSS COUNTRY CHAMPIONS

**TEN INDOOR TRACK AND FIELD
NATIONAL QUALIFIERS**

Learn more at

msslions.com



Women's Cross Country champs!

Glossary of Terms

25th percentile - The score at or below which 25 percent of students submitting test scores to an institution scored.

75th percentile - The score above which 25 percent of students submitting test scores to an institution scored.

Academic Rank - A status designated by the institution according to the institution's policies, such as Professor, Associate Professor, Assistant Professor and Instructor.

Academic Year - The period of time generally extending from September to June.

Accrediting Agencies - Agencies that establish operating standards for educational or professional institutions and programs, determine the extent to which the standards are met, and publicly announce their findings.

ACT - The ACT® college readiness assessment is a curriculum- and standards-based educational and career planning tool, which measures educational development and readiness to pursue college-level coursework in English, mathematics, natural science, and social studies.

Adjunct Instructional Staff - Non-tenure track instructional staff serving in a temporary or auxiliary capacity to teach specific courses on a course-by-course basis. This includes either instructional staff that are hired to teach an academic degree-credit course and those hired to teach a remedial, developmental, or ESL course; whether the latter three categories earn college credit is immaterial.

Adjusted Cohort – Students who are excluded from the original cohort (or sub cohort) due to any allowable exclusion.

Admissions (students admitted) - Applicants that have been granted an official offer to enroll in a postsecondary institution.

Applicant (students applied) - An individual who has fulfilled the institution's requirements to be considered for admission (including payment or waiving of the application fee, if any) and who has been notified of one of the following actions: admission, non-admission, placement on waiting list, or application withdrawn by applicant or institution.

Census Date - The Census Date of the university represents a date in each semester when a “snapshot” of university data is reported. Data reported at Census represent the official enrollment for the semester.

Certificate - A formal award certifying the satisfactory completion of a postsecondary education program.

Classification of Instructional Programs (CIP) - A six-digit code in the form xx.xxxx that identifies instructional program specialties within educational institutions.

Credit Hour - A unit of measure representing the equivalent of 15 class sessions consisting of 50 minutes of instruction. It is applied toward the total number of hours needed for completing the requirements of a degree, diploma, certificate, or other formal award.

Declared Major - Students who have declared their area of study and are enrolled in at least one course taken for credit anytime during the academic year. Students with a double major are counted in each area but only counted once in the college and university counts. Data are gathered each semester on Census Date.

Degree - An award conferred by a college, university, or other postsecondary education institution as official recognition for the successful completion of a program of study.

Degree/certificate-Seeking Students - Students enrolled in courses for credit and recognized by the institution as seeking a degree, certificate, or other formal award. High school students also enrolled in postsecondary courses for credit are not considered degree/certificate-seeking.

Exclusions - Those students who may be removed (deleted) from a cohort (or sub cohort). For the Graduation Rates and Fall Enrollment retention rate reporting, students may be removed from a cohort if they left the institution for one of the following reasons: death or total and permanent disability; service in the armed forces (including those called to active duty); service with a foreign aid service of the federal government, such as the Peace Corps; or service on official church missions.

Faculty - Persons whose specific assignments customarily are made for the purpose of conducting instruction, research, or public service as a principal activity (or activities), and who hold academic titles of professor, associate professor, assistant professor, instructor, lecturer, or the equivalent of any of these academic ranks.

Fall - The part of the academic year that begins between late August and November 1.

First-Time Student - Students who enroll in college for the first time. First-time students (FTST) are those who have earned no previous college credit hours, although those who earned college credits while in high school through dual credit are included as well as students who originally enter MSSU as non-degree seeking.

First-Time Student Retention Rate - The percent of first-time students who return for their sophomore year.

First-Time Transfer Student - Students who enroll at MSSU for the first time who have previously attended another postsecondary institution.

Fiscal Year (FY) - The period of time utilized for maintaining university financial records. It commences on July 1 and ends June 30 the following year.

Freshmen - Undergraduates who have earned fewer than 30 college semester credit hours.

Full-Time Equivalent (FTE) Staff - The full-time-equivalent (FTE) of staff is calculated by summing the total number of full-time staff from the Employees by Assigned Position (EAP) component and adding one-third of the total number of part-time staff.

Full-Time Equivalent (FTE) Graduate - All the credit hours taken by graduate students, divided by 12 per semester or 24 per academic year.

Full-Time Equivalent (FTE) Undergraduate - All the credit hours taken by undergraduate students, divided by 15 per semester or 30 per academic year.

Full-Time Instructional Faculty - Individuals are included or excluded based on the instructions for reporting to government agencies, i.e., IPEDS.

Full-Time Student - A full-time student is a student who takes at least 12 credit hours (undergraduate) or 9 credit hours (graduate) in a specific semester.

Geographic Origin – The place a student resides at the time of first application to the institution.

Graduate - A student who holds a bachelor's or first-professional degree, or equivalent, and is taking courses at the post- baccalaureate level.

Graduation Rate - The percent of first-time students who graduate within a given period of time.

Headcount - Refers to the unduplicated count of students enrolled for one or more classes during the time period stated.

Junior – This is an undergraduate student who has earned at least 60 but fewer than 90 semester credit hours.

Major - A concentration of related courses generally consisting of 30 to 50 semester hours of credit. A student may have more than one major.

Non-Degree Seeking - A student enrolled in courses for credit that is not recognized by the institution as seeking a degree or formal award.

Nonresident Alien - A person who is not a citizen or national of the United States and who is in this country on a visa or temporary basis and does not have the right to remain indefinitely.

Part-Time Student - An undergraduate student enrolled with fewer than 12 credits in a semester or a graduate student enrolled in nine credit hours or less.

Program Category - A summary of groups of related instructional programs designated by the first 2 digits of its appropriate Classification of Instructional Programs (CIP) code.

Race/Ethnicity - Categories used to describe groups to which individuals belong or identify with. A person may be counted in only one group.

Retention Rate - This is the percentage of first-time bachelor's degree-seeking undergraduates from the previous fall who are again enrolled in the current fall.

Senior - An undergraduate student who has accumulated at least 90 semester credit hours.

Sophomore - An undergraduate student who has accumulated at least 30 semester hours of credit, but fewer than 60 semester credit hours.

Summer - The part of the academic year that begins between late May and July.

Spring - The part of the academic year that begins between late January and March.

Student to Faculty Ratio – The ratio includes the total full-time equivalent (FTE) enrollment of students divided by the total full-time equivalent (FTE) of instructional faculty.

Sub cohort - A predefined subset of the initial cohort or the revised cohort established for tracking purposes on the Graduation Rates (GR) component of IPEDS (e.g., bachelor's degree-seeking sub cohort.)

Tenure - Status of a personnel position with respect to permanence of the position.

Tuition and fees - The amount of tuition and required fees covering a full academic year most frequently charged to students. These values represent what a typical student would be charged and may not be the same for all students at an institution. If tuition is charged on a per-credit-hour basis, the average fulltime credit hour load for an entire academic year is used to estimate average tuition. Required fees include all fixed sum charges that are required of such a large proportion of all students that the student who does not pay the charges is an exception.

Undergraduate - A student enrolled in a 4- or 5-year bachelor's degree program, an associate's degree program, or a vocational or technical program below the baccalaureate.