

2013

Fact Book



Missouri Southern State University

Missouri Southern State University

Fact Book - 2013

Compiled by

CENTER FOR ASSESSMENT & INSTITUTIONAL RESEARCH

**3950 E. Newman Road
Plaster Hall, Room 321
Joplin, MO 64801
Phone: (417) 625-9772
Fax: (417) 659-4457**

<http://www.mssu.edu/center-assessment-institutional-research/>

MSSU FACT BOOK-2013

Preface

The Center for Assessment & Institutional Research is pleased to share with you the Missouri Southern State University 2013 *Fact Book*. The *Fact book* contains historical, general information, and statistical data on a broad range of topics pertaining to the University. The *Fact Book* is designed to facilitate campus planning and data-driven decision making processes. It provides answers to the most frequently asked questions about MSSU.

The *Fact Book* presents a summary of facts about students, faculty, staff, and most University operations. We hope that you find the information presented in this Fact Book enlightening and expedient. The Fact Book will be updated annually by the Center for Assessment & Institutional Research. If you have comments, questions, or suggestions for improving subsequent editions of the *Fact Book*, please contact the Center for Assessment & Institutional Research.

We sincerely appreciate the cooperation and diligence of all campus contributors. The *Fact Book* is also available through the internet at www.mssu.edu/center-assessment-institutional-research.

Bob Adebayo, Ph. D.
Director

Janette Van De Mark
Senior Analyst and Reporting
Specialist

Center for Assessment & Institutional
Research
3950 E. Newman Road
Plaster Hall, Room 321
Joplin, MO 64801
Phone: (417) 625-9772
Fax: (417) 659-4457



Table of Contents

General Information	8
Quick Facts	9
General University Timeline.....	11
University Mission, Vision and Value.....	12
Institutional Accreditation.....	13
Professional Memberships	14
Missouri Southern State University Peer Institutions	15
 University Governance and Administration	 16
University Organizational Chart.....	17
University Board of Governors, Past Presidents and Administrators	18
University Academic Deans and Faculty Senate Officials	19
 New Student Information.....	 20
Fall Application, Acceptance & Enrollment	21
Percent of Fall First-Time Students Admitted & Enrolled	21
Percent of Fall First-Time Transfer Students Admitted & Enrolled.....	21
Fall First-Time Student Profile	22
Fall First-Time Transfer Student Profile.....	23
Fall First-Time Transfer Students From Missouri Institutions	24
Fall First-Time Transfer Students From State of Institution of Origin.....	26
ACT Score Range of Fall First-Time Students.....	27
High School Rank of Fall First-Time Students.....	28
Percent of High School Rank of First-Time Students, Fall 2013	28
High School GPA Range of Fall First-Time Students.....	29
Percent of First-Time Students by High School GPA Range, Fall 2013	29
County of Origin of Fall First-Time Students at First Application.....	30
County of Origin Map of Fall First-Time Students at First Application, Fall 2013	31
State of Origin of Fall First-Time Students at First Application	32
Country of Origin of Fall First-Time Students at First Application	33

Percent of First-Time Students by Geographic Origin at First Application, Fall 2013	33
Top Ten Feeder High Schools to MSSU	34
Fall First-Time Students by School	35
Percent of First-Time Students by School, Fall 2013	35
Fall First-Time Students by Department.....	36
Fall First-Time Transfer Students by School.....	37
Percent of First-Time Transfer Students by School, Fall 2013.....	37
Fall First-Time Transfer Students by Department	38

Enrollment.....39

Ten Year Enrollment Trends.....	40
Differences in 1, 5 & 10 Year Enrollment Trends.....	40
Fall Undergraduate Student Profile.....	41
Fall Graduate Student Profile.....	42
Fall Enrollment by Race/Ethnicity and Gender	43
Fall Enrollment by Class Level.....	44
Place of Origin at First Application by State, Fall 2009-2013 Enrollment.....	45
Place of Origin at First Application Map, Fall 2013 Enrollment.....	46
Place of Origin at First Application by Country, Fall 2009-2013 Enrollment.....	47
Fall Undergraduate Enrollment by School/Department.....	48
Spring Undergraduate Enrollment by School/Department	49
Summer Undergraduate Enrollment by School/Department	50
Fall, Spring & Summer Graduate Enrollment by School/Department.....	51

Credit Hour Production.....52

Total Annual Credit Hours, Enrollment and Full-Time Equivalent.....	53
Fall, Spring and Summer Credit Hours.....	54
Fall Cumulative GPA by Student Classification.....	55
Fall 2012 Cumulative GPA by Student Classification.....	55
Student Grade Distribution by Class Level.....	56
Percentage of A and B Grades by Level	57

Degrees Conferred	58
Degrees and Certificates Offered as of Spring 2014.....	59
Number of Degrees Conferred by Program and Award Level, (Smr 2012, Fall 2012 & Spg 2013) ..	61
Number of Undergraduate Degrees Awarded by School, (Fall, Spring & Summer).....	62
Number of Undergraduate Degrees Awarded by Department, (Fall, Spring & Summer).....	63
Number of Graduate Degrees Awarded by Department & School, (Fall, Spring & Summer).....	64
 Retention and Graduation	 65
Fall First-Time, Full-Time Bachelor's Seeking Students Retention Rates.....	66
Fall First-Time Transfer Students Retention Rates.....	67
Fall First-Time, Full-Time Bachelor's Seeking Graduation Rates	68
 Faculty and Staff	 69
Faculty Profile.....	70
Full-Time Faculty by Rank and Gender, Fall 2013	71
Full-Time Faculty by Highest Degree and Gender, Fall 2013.....	72
Average Full-Time Faculty Salary by Rank	73
Faculty/Staff by Gender and Race/Ethnicity as of November 1	74
 Teaching and Learning.....	 75
Number of Fall Class Sections with Undergraduates Enrolled.....	76
Undergraduate Student to Faculty Ratio.....	77
Undergraduate Student and Faculty FTE.....	77
Student Classification by Semester, Courses Taken and Course Credit Hours	78
Freshmen ETS Proficiency Profile Total Score Mean Comparison by Year.....	79
Senior ETS Proficiency Profile Total Score Mean Comparison by Year	79
Top Ten Employers of 2011-2012 MSSU Graduates	80
Spring Career Fair Employer Attendance.....	80
Number of Employers Posting Jobs.....	81
Number of Jobs Posted by Employers	81
Graduates Employed or Continuing Education by Degree, 2011-2012.....	82

Graduates Employed by Year	82
Graduates Employed or Continuing Education by Year.....	83
Graduates Continuing Education by Year.....	83
University Financial Resources	84
Sources of Core Revenues, FY 2013	85
Percent of Sources of Core Revenues, FY 2013.....	85
Sources of Core Expenses, FY 2013.....	86
Percent of Sources of Core Expenses, FY 2013	86
Distribution of Financial Aid by Award Type, 2012-2013.....	87
Average Amount of Financial Aid by Award Type, 2012-2013	87
Distribution of Financial Aid by Loan Source, 2012-2013.....	88
Average Amount of Financial Aid by Loan Source, 2012-2013	88
Undergraduate Pricing Information	89
Facilities	90
Campus Housing Statistics.....	91
Percent in Campus Housing by Academic Year.....	91
Campus Map.....	92
Campus Building Statistics	93
Library	94
Library Services, Collections & Personnel, FY 2012-2013.....	95
Foundation	96
Missouri Southern Foundation 2013 Financial Report.....	97
Athletics	98
Athletic Statistics	99
Glossary of Terms	100

General Information



Quick Facts

Ten-Year Historical Trend from 2004 to 2013

Enrollment (Fall)	2004	2005	2006	2007	2008	2009	2010	2011	2012	2013
Headcount Enrollment	5256	5473	5675	5593	5264	5701	5802	5591	5417	5616
Percent Full-Time	69%	70%	72%	70%	73%	72%	74%	72%	74%	73%
Percent Part-Time	31%	30%	28%	30%	27%	28%	26%	28%	26%	27%
Percent Female	60%	60%	59%	60%	60%	59%	58%	58%	58%	58%
Percent Minority	10%	10%	11%	10%	11%	12%	13%	14%	15%	17%
Percent Out-of-State	14%	14%	15%	12%	13%	12%	12%	12%	13%	15%
Percent International (residency)	N/A	N/A	N/A	2%	2%	2%	2%	2%	2%	3%
First-Time Student Enrollment	777	897	945	818	771	858	900	775	802	808
Special Non-Degree Seeking Enrollment	424	484	405	512	337	444	376	394	373	455
Freshmen Enrollment	1544	1647	1716	1633	1516	1625	1741	1558	1476	1497
Sophomore Enrollment	928	1035	1099	1023	1008	1001	967	981	961	950
Junior Enrollment	1003	981	1102	1054	999	1091	1075	1053	1031	1117
Senior Enrollment	1198	1179	1218	1318	1329	1444	1440	1415	1388	1395
Post-Graduate Enrollment	154	138	126	23	30	34	152	135	122	173
Graduate Enrollment	5	9	9	30	45	62	51	55	66	29
Equivalent Full-Time*	4045	4198	4407	4341	4183	4531	4599	4358	4295	4400
Spring Enrollment	4987	4971	5119	5194	4861	5090	5431	5353	5097	5052
Summer Enrollment	1801	1828	1899	1946	1776	1850	1983	1883	1734	1812
First-Time Student (Fall)	2004	2005	2006	2007	2008	2009	2010	2011	2012	2013
Average ACT Scores Fall Term	22.2	21.9	21.6	21.8	21.8	21.3	21.3	21.4	21.6	21.4
Average HS GPA Fall Term	3.4	3.2	3.1	3.3	3.3	3.2	3.2	3.2	3.2	3.2
Total Applicants	1,438	1,576	1,662	1,425	1,382	1,568	1,788	1,691	1,836	1,726
-Number Accepted	1,423	1,560	1,620	1,404	1,330	1,483	1,687	1,632	1,766	1,679
-Number Enrolled	777	897	945	818	771	858	900	775	802	808
Counties (Fall Enrollment)	2004	2005	2006	2007	2008	2009	2010	2011	2012	2013
Jasper	2583	2688	2762	2578	2147	2553	2597	2500	2319	2435
Newton	652	693	736	699	560	701	779	746	728	772
Lawrence	166	164	172	158	130	162	160	167	169	153
Barry	127	137	131	131	134	153	150	124	126	146
Barton	155	172	157	139	104	118	117	101	91	95
McDonald	112	97	81	83	67	105	103	108	114	94
St. Louis	33	37	38	38	46	53	58	62	79	71
Greene	59	76	76	74	56	65	72	85	82	71
Vernon	83	85	98	85	69	90	93	81	81	77
Jackson	100	101	105	85	73	79	69	75	81	102
Age (Fall Enrollment)	2004	2005	2006	2007	2008	2009	2010	2011	2012	2013
Under 18	147	190	120	202	120	177	253	204	216	276
18-19	915	1233	1344	1274	1271	1276	1304	1132	1102	1151
20-21	1157	1050	1242	1280	1223	1217	1254	1203	1230	1269
22-24	1022	940	968	917	904	1072	1018	1062	1021	1075
25-29	638	772	694	674	629	704	744	735	705	671
30-34	455	438	420	426	378	404	433	415	372	413
35-39	297	285	288	274	261	292	271	283	254	266
40-49	381	391	317	332	296	362	334	366	342	312
50-64	136	154	135	143	142	153	148	146	138	138
65 and over	15	19	16	26	32	32	34	33	30	39
Age unknown/unreported	93	1	131	45	8	12	9	12	7	6
Average Age	26	26	26	26	25	26	26	26	25	25
Student-Faculty Ratio	N/A	N/A	N/A	N/A	18 to 1	19 to 1	19 to 1	18 to 1	18 to 1	19 to 1
Annual Credit Hours Generated	2003-2004	2004-2005	2005-2006	2006-2007	2007-2008	2008-2009	2009-2010	2010-2011	2011-2012	2012-2013
Annual Credit Hours Generated	126,452	127,303	134,035	138,818	132,509	135,246	142,805	143,136	134,353	133,482

Quick Facts (continued)
Ten-Year Historical Trend from 2004 to 2013 (continued)

Degrees & Certificates Granted (IPEDS)	2003-2004	2004-2005	2005-2006	2006-2007	2007-2008	2008-2009	2009-2010	2010-2011	2011-2012	2012-2013
Associate's degree	148	124	126	108	125	134	161	175	192	193
Bachelors degree	734	707	637	612	673	740	772	860	865	845
Master's degree			1	8	6	6	0	22	39	41
Total degrees awarded	882	831	764	728	804	880	933	1057	1096	1079
Academic Faculty	2004	2005	2006	2007	2008	2009	2010	2011	2012	2013
Full-Time (includes Deans and Chairs)	200	203	208	211	215	208	207	206	196	197
Part-Time	100	102	99	84	76	87	105	100	117	113
Percent Female (full-time faculty)	36%	38%	37%	37%	40%	39%	41%	45%	47%	47%
Percent Minority (full- time faculty)	7%	7%	8%	8%	10%	8%	8%	8%	8%	10%
Percent Doctorate (full- time faculty)	60%	61%	61%	61%	58%	58%	59%	57%	57%	62%
Average Age (full-time faculty)	49	50	50	51	51	50	50	49	50	50
Financial (IPEDS)	FY 2004	FY 2005	FY 2006	FY 2007	FY 2008	FY 2009	FY 2010	FY 2011	FY 2012	FY 2013
Operating Budget	\$46,756,754	\$49,637,878	\$53,887,061	\$59,180,412	\$61,362,912	\$55,899,518	\$60,285,521	\$64,645,489	\$65,419,622	\$66,810,633
Percent Annual Change	1.0%	6.2%	8.6%	9.8%	3.7%	-8.9%	7.8%	7.2%	1.2%	2.1%
Total Expenditures per FTE Student	\$ 11,093	\$ 11,693	\$ 12,058	\$ 12,779	\$ 13,877	\$ 12,378	\$ 12,638	\$ 13,524	\$ 14,583	\$ 14,993
Tuition & fees minus discounts & allowances	\$13,691,302	\$13,111,559	\$13,385,232	\$15,305,631	\$13,644,176	\$12,824,164	\$14,929,071	\$16,149,336	\$17,353,425	\$16,582,114
Government appropriation	\$19,762,577	\$20,478,770	\$20,478,770	\$20,961,262	\$22,792,403	\$24,829,243	\$24,829,243	\$23,536,930	\$21,948,530	\$22,225,470
Scholarships & Fellowships minus discounts & allowances	\$ 3,977,824	\$ 5,305,469	\$ 5,526,385	\$ 6,638,504	\$ 7,091,352	\$ 4,764,468	\$ 8,806,708	\$ 9,827,917	\$ 9,407,911	\$ 8,709,638
Endowment Assets at the end of the FY	\$21,990,173	\$22,690,098	\$24,974,344	\$28,249,085	\$26,447,233	\$25,467,845	\$26,325,817	\$31,682,538	\$30,977,688	32223163

*FTE is calculated by dividing undergraduate credit hours by 15 plus graduate credit hours by 12 per semester

General University Timeline

1937 - Joplin Junior College is established under the supervision of the Extension Division of the University of Missouri and held in the Joplin High School Joplin and H.E. Blaine is named first Dean.

1964 - The college adopts the official name of "Jasper County Junior College" under the direction of the Junior College District of Jasper County governed by a Board of Trustees.

1965 – Legislation is passed creating the four year institution known as Missouri Southern College.

1967 - The new 320-acre campus is opened under the direction of the first appointed president, Dr. Leon C. Billingsly.

1969 – The college awarded first baccalaureate degrees to 198 students.

1972 – The college is renamed Missouri Southern State College.

1977 - Missouri Southern State College becomes a state assisted four-year college and part of the State of Missouri's higher education system gaining full state funding.

1978 – Dr. Floyd Belk serves as interim President until Dr. Donald C. Darnton assumes the presidency in 1979.

1982 - Dr. Julio Leon is appointed the president.

1992 - Richard M. Webster Communications and Social Science Building is opened.

1995 - Legislation is passed directing MSSC to add international emphasis to its mission, and the newly constructed Student Life Center is complete.

2003 - Legislation is passed renaming the college to Missouri Southern State University-Joplin.

2006 - The first group of students receives their master's degrees.

2007 - Dr. Terri Agee is selected as interim president after Dr. Julio Leon announces his retirement.

2008 - Dr. Bruce W. Speck is named president.

2009 - The George S. Beimdiek Recreation Center and Willcoxon Student Health Center officially opened.

2010 - The newly-renovated Mission Hills Mansion opens as the Ralph L. Gray Alumni Center along with the state-of-the-art Health Science building.

2012 - The university begins a year-long celebration of its 75th anniversary.

2014 - Dr. Alan D. Marble is appointed president after serving as interim.

University Mission, Vision and Value Statement

Missouri Southern State University is a state-supported, comprehensive university offering programs leading to undergraduate and graduate degrees. Central to our mission is a strong commitment to international education, liberal arts, professional and pre-professional programs, and the complementary relationship that must exist among them to prepare individuals for success in careers and lifelong learning.

Vision

Missouri Southern State University will be recognized as a leader in offering undergraduate and graduate degree programs that foster the total education of each student. In order to remain loyal to the trust given to the University by the people of the State of Missouri, Missouri Southern State University will:

- fulfill its mission and objectives in an honorable and ethical manner;*
- periodically review its mission in light of contemporary changes in society and in the needs of the people of Missouri and our communities;*
- continually assess the effectiveness of its programs in order to ensure their quality and integrity.*

Value

International Education

The University prepares its students to be global citizens in fulfillment of its statewide mission.

Liberal Arts Education

The University commits to a comprehensive program of general education requirements for all students.

Teaching and Learning

The University provides exemplary teaching and learning as supported by scholarship and creative expression.

Student Success

The University commits to the academic, personal and career success of its students.

Community Service

The University leads the intellectual, creative, cultural and economic advancement of our communities.

Institutional Accreditation

Missouri Southern State University is accredited by The Higher Learning Commission

Member-North Central Association

Accreditation Commission for Education in Nursing

Accreditation Council for Business Schools and Programs

American Board of Engineering and Technology

Commission on Collegiate Nursing Education

Commission on Accreditation of Allied Health Education

Commission on Dental Accreditation, American Dental Association

Committee on Accreditation for Respiratory Care

Council for the Accreditation of Educator Preparation (CAEP)

Joint Review Committee on Education in Radiologic Technology

Missouri State Board of Nursing

Missouri Department of Elementary and Secondary Education

Missouri Department of Health and Senior Services Bureau EMS

National Accrediting Agency for Clinical Laboratory Science

National Council for Accreditation of Teacher Education (NCATE)

National Environmental Health Science and Protection Council

Peace Officer Standards and Training (P.O.S.T)

Professional Memberships

American Association of Colleges for Teacher Education
American Association of Colleges of Nursing
American Association of State Colleges and Universities
American Dental Education Association
American Institute of Indian Studies
Association to Advance Collegiate Schools of Business
Association of Collegiate Business Schools and Programs
Association of Environmental Health Academic Programs
Association of Governing Boards of Universities & Colleges
Council for the Advancement and Support of Education
Council on Public Higher Education
Institute of International Education
Mid-America Intercollegiate Athletics Association
Missouri Academy of Science
Missouri Association of Colleges for Teacher Education
Missouri Biotechnology Association
Missouri Consortium for International Programs and Studies
Missouri Math and Science Coalition
NAFSA: Association of International Educators
National Collegiate Athletic Association
National League for Nursing Baccalaureate and Higher Degree Programs
North Central Association
The Higher Learning Commission
Southwest Center for educational Excellence

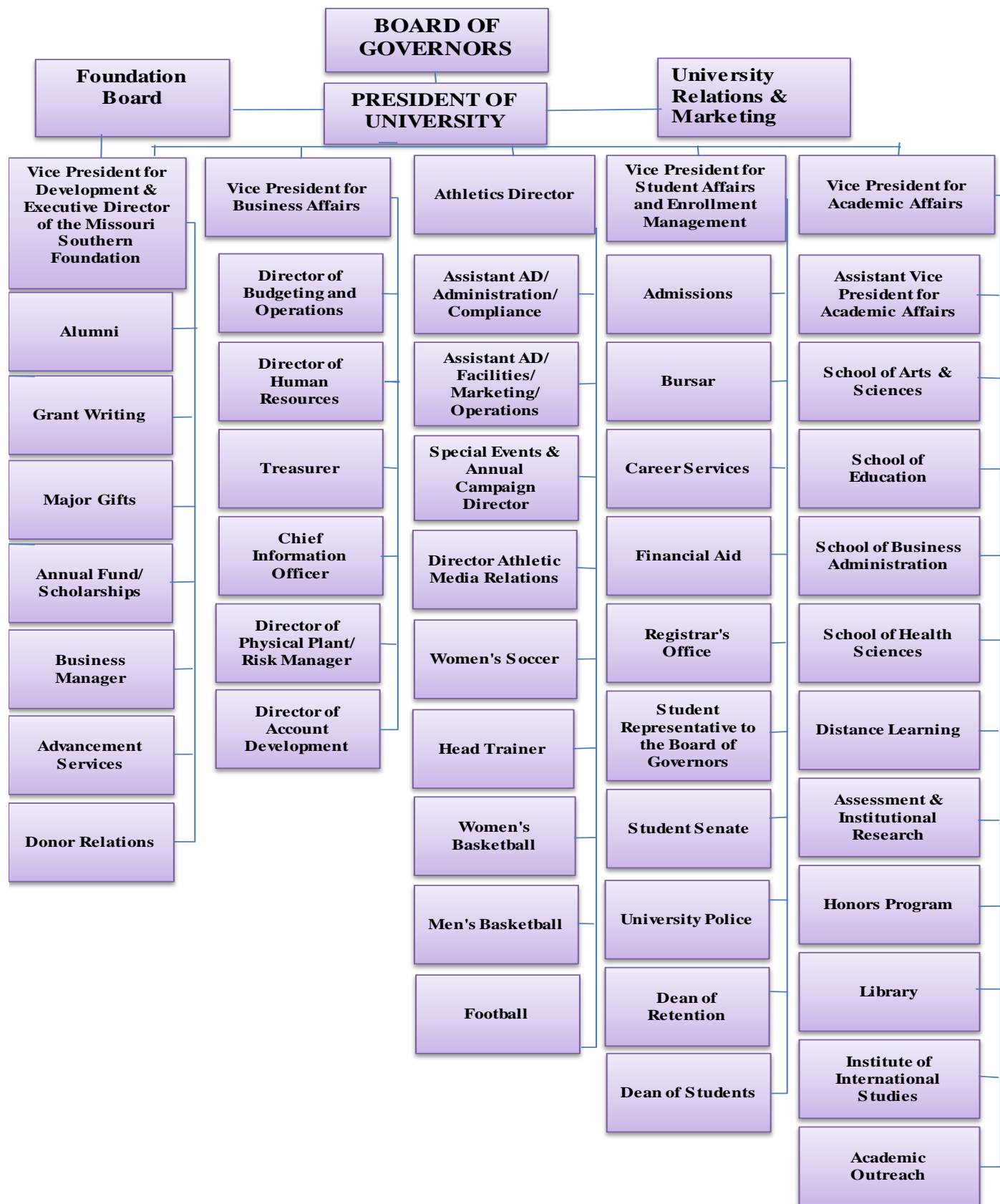
Missouri Southern State University Peer Institutions

Alabama:	Auburn University at Montgomery Alabama State University University of West Alabama
Arkansas:	Arkansas State University-Mountain Home University of Arkansas at Monticello University of Arkansas at Pine Bluff Southern Arkansas University Main Campus Henderson State University
Idaho:	Lewis-Clark State College
Indiana:	Purdue University-North Central Campus Indiana State University Indiana University Purdue University-Fort Wayne
Louisiana:	Southern University at New Orleans
Maine:	University of Maine at Augusta
Maryland:	University of Maryland-University College
Missouri:	Lincoln University Missouri Western State University Harris-Stowe State University
New Hampshire:	Granite State College
New York:	SUNY Empire State College
Ohio:	Central State University
Oklahoma:	Langston University Southeastern Oklahoma State University Northwestern Oklahoma State University
Texas:	Sul Ross State University The University of Texas at Brownsville Texas A & M University-Kingsville Texas Southern University
Utah:	Utah Valley University
West Virginia:	Concord University

University Governance and Administration



University Organizational Chart



Sources: Vice President for Business Affairs Office

University Board of Governors, Past Presidents and Administrators

Current Board of Governors

Name	Appointed	Term Expires	Residence
Rod Anderson	2003	2009	Monett, MO
Sherry Buchanan	2009	2014	Joplin, MO
Lynn M. Ewing	2010	2015	Nevada, MO
James B. Fleischaker	2011	2017	Joplin, MO
Keith C. Hankins	2013	2016	Stockton, MO
Glenn M. McCumber	2013	2018	Noel, MO
Tracy Flanigan	2014	2019	Carthage, MO

Past Presidents of MSSU

Name	Years Served
Dr. Leon C. Bilingsley	1967 - 1978
Dr. Floyd Belk	1978 – 1979 (Interim President)
Dr. Donald C. Darton	1979 - 1982
Dr. Julio Leon	1982 - 2007
Dr. Terri Agee	2007 - 2008 (Interim President)
Dr. Bruce Speck	2008 - 2013

University Administrators

Title	Name
President of the University	Dr. Alan Marble
Interim Vice President for Academic Affairs	Dr. Pat Lipira
Assistant Vice-President for Academic Affairs	Dr. Crystal Lemmons
Vice President for Business Affairs	Mr. Rob Yust
Vice President of Student Affairs and Enrollment Management	Mr. Darren Fullerton
Vice-President for Development/Executive Director	Ms. JoAnn Graffam
Athletic Director	Mr. Jared Bruggeman

University Academic Deans and Faculty Senate Officials

Academic Deans

School

Name

Plaster School of Business
 School of Education
 School of Arts and Sciences
 School of Health Sciences

Dr. John D. Groesbeck
 Dr. Al Cade
 Dr. Richard Miller
 Dr. Tia Strait

Faculty Senate

Name

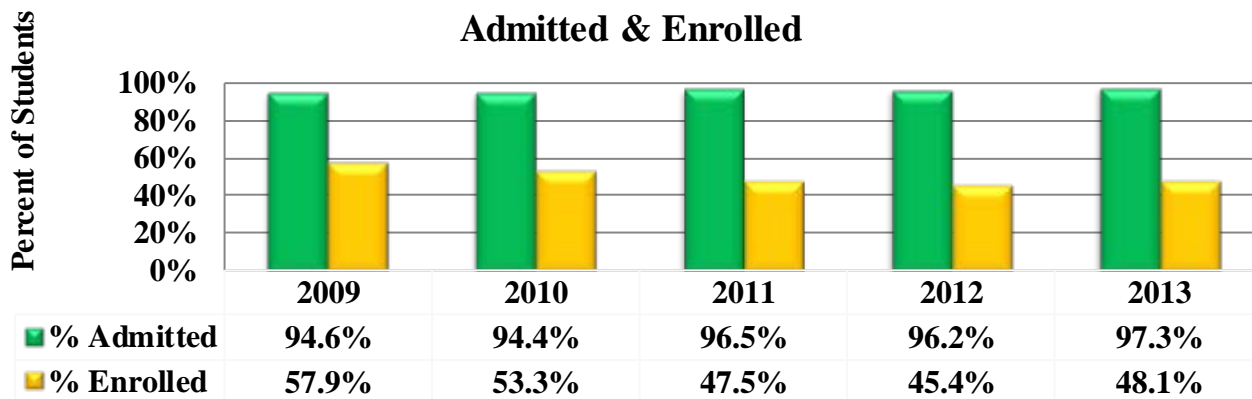
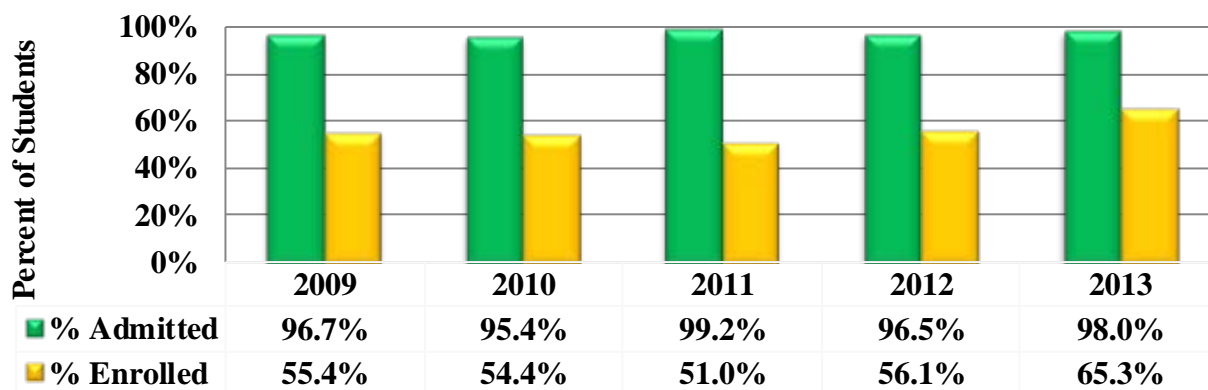
Dr. Joy Dworkin, President
 Dr. Michael Garoutte, President Elect
 Ms. Wendy McGrane, Secretary
 Dr. Richard A. Laird, Parliamentarian
 Dr. Tom Schmidt, Member-At-Large
 Dr. Linda Hand, Past-President

New Student Information



Fall Application, Acceptance & Enrollment

Student Type	2009	2010	2011	2012	2013
First-Time Students					
Applied	1,568	1,788	1,691	1,836	1,726
Admitted	1,483	1,687	1,632	1,766	1,679
Enrolled	858	900	775	802	808
% Admitted	94.6%	94.4%	96.5%	96.2%	97.3%
% Enrolled	57.9%	53.3%	47.5%	45.4%	48.1%
First-Time Transfer Students					
Applied	1,100	1,164	1,139	1,073	909
Admitted	1,064	1,111	1,130	1,035	891
Enrolled	589	604	576	581	582
% Admitted	96.7%	95.4%	99.2%	96.5%	98.0%
% Enrolled	55.4%	54.4%	51.0%	56.1%	65.3%

Percent of Fall First-Time Students
Admitted & EnrolledPercent of Fall First-Time Transfer Students
Admitted & Enrolled

Sources: IPEDS Institutional Characteristics and Common Data Set

Fall First-Time Student Profile

Race/Ethnicity	2009		2010		2011		2012		2013	
International	6	1%	12		8	1%	11	1%	10	1%
Hispanic/Latino	28	3%	20	2%	23	3%	32	4%	28	3%
American Indian or Alaska Native	21	2%	34	4%	15	2%	28	4%	24	3%
Asian	14	2%	12	1%	15	2%	15	2%	20	2%
Black or African American	57	7%	52	6%	48	6%	59	7%	66	8%
Native Hawaiian or Other Pacific Islander	0	0%	0	0%	1	0%	1	0%	2	0%
White	699	81%	717	80%	617	80%	613	76%	627	79%
Two or more races	0	0%	4	0%	21	3%	23	3%	2	0%
Race and ethnicity unknown	33	4%	49	6%	27	3%	20	3%	29	4%
Total	858	100%	900	100%	775	100%	802	100%	808	100%
Age Breakdown	2009		2010		2011		2012		2013	
17 & younger	17	2%	10	1%	11	1%	11	1%	15	2%
18	498	58%	548	61%	441	57%	508	63%	528	65%
19	200	23%	179	20%	171	22%	133	17%	119	15%
20+ & Unknown	143	17%	163	18%	152	20%	150	19%	146	18%
Total	858	100%	900	100%	775	100%	802	100%	808	100%
Gender	2009		2010		2011		2012		2013	
Male	441	51%	436	48%	377	49%	373	47%	365	45%
Female	417	49%	464	52%	398	51%	429	53%	443	55%
Total	858	100%	900	100%	775	100%	802	100%	808	100%
Enrollment Status	2009		2010		2011		2012		2013	
Full-time	814	95%	850	94%	718	93%	743	93%	762	94%
Part-time	44	5%	50	6%	57	7%	59	7%	46	6%
Total	858	100%	900	100%	775	100%	802	100%	808	100%

Sources: IPEDS Fall Enrollment Surveys

Fall First-Time Transfer Student Profile

Race/Ethnicity	2009		2010		2011		2012		2013	
International	18	3%	17	3%	11	2%	12	2%	14	2%
Hispanic/Latino	21	4%	24	4%	17	3%	13	2%	29	5%
American Indian or Alaska Native	22	4%	23	4%	19	3%	23	4%	27	5%
Asian	5	1%	9	2%	8	1%	7	1%	15	3%
Black or African American	21	4%	30	5%	23	4%	37	6%	47	8%
Native Hawaiian or Other Pacific Islander	0	0%	1	0%	1	0%	0	0%	0	0%
White	458	77%	467	77%	470	82%	453	78%	431	74%
Two or more races	0	0%	1	0%	6	1%	10	2%	1	0%
Race and ethnicity unknown	44	7%	32	5%	21	4%	26	5%	18	3%
Total	589	100%	604	100%	576	100%	581	100%	582	100%
Age Breakdown	2009		2010		2011		2012		2013	
17 & younger	2	0%	1	0%	1	0%	2	0%	0	0%
18	6	1%	10	2%	9	2%	4	1%	11	2%
19	55	9%	70	11%	63	11%	78	13%	58	10%
20+ & Unknown	526	90%	523	87%	503	87%	497	86%	513	88%
Total	589	100%	604	100%	576	100%	581	100%	582	100%
Gender	2009		2010		2011		2012		2013	
Male	238	40%	254	42%	231	40%	218	38%	247	42%
Female	351	60%	350	58%	345	60%	363	62%	335	58%
Total	589	100%	604	100%	576	100%	581	100%	582	100%
Enrollment Status	2009		2010		2011		2012		2013	
Full-time	432	73%	487	81%	459	80%	478	82%	456	78%
Part-time	157	27%	117	19%	117	20%	103	18%	126	22%
Total	589	100%	604	100%	576	100%	581	100%	582	100%

Sources: IPEDS Fall Enrollment Surveys

Fall First-Time Transfer Students From Missouri Institutions

Institution of Origin	2009	2010	2011	2012	2013
State Less Than Two-Year					
Franklin Technology Center				4	8
State Two-Year					
Crowder College	147	129	132	147	145
East Central College		4	4	2	2
Jefferson College		6	2	4	3
Linn State Technical College				1	
Metropolitan Community College			6	10	10
Mineral Area		1	1	2	1
Moberly Area Community College		3	3		3
North Central Missouri College	2	2	2		2
Ozarks Technical Community College	22	14	29	22	26
St. Charles Community College		1	1	1	1
St. Louis Community College Systems		0	5	1	6
State Fair Community College	5	2	2	3	3
Three Rivers Community College	7	6	4	7	1
Subtotal Missouri Two-Year	183	168	191	200	203
State Four-Year					
Lincoln University	1		3	1	
Missouri State University	4	15	15	10	15
Missouri State University-West Plains	2	4	2		2
Missouri Univ Science & Tech	1	3	4		1
Missouri Western State University	2		1	4	2
Northwest Missouri State University	1			4	
Southeast Missouri State University	5	4	4	3	8
Stephens College					1
Truman State University	1	2	1		
University of Missouri-Columbia	4	5	4	5	2
University of Missouri-Kansas City		2	1	4	2
University of Missouri-St. Louis	1				1
University of Central Missouri	2	7	3	4	3
Subtotal Missouri Four-Year	24	42	38	35	37
Total Missouri State Institutions	207	210	229	239	248

Fall First-Time Transfer Students From Missouri Institutions of Origin (Continued)

Institution of Origin	2009	2010	2011	2012	2013
Independent Two-Year					
Cottey College	1	4	2	4	1
Wentworth Military Academy	1	1	2	3	
Subtotal Independent Two-Year	2	5	4	7	1
Independent Four-Year					
Avila University			3		
Calvary Bible Col & Theol Sem					1
Central Methodist University	3	3	3		1
College of the Ozarks	1		2	2	
Columbia College	2	2		3	
Cox College	1	1	1		
Culver-Stockton College			2	1	
Devry University-Kansas City MO	1	1			
Drury University	3	3	5	1	4
Evangel University	2	1	1	4	
Hannibal-La Grange College		1			
Lindenwood University			1		
Logan College of Chiropractic			1		
Messenger College	4	1	1	1	1
Missouri Valley College	1	2	1	1	
Ozark Christian College	23	24	15	31	19
Park University	2	4	1		
Rockhurst University		1		1	
Saint Louis Christian College					1
St. Louis University			1		
Southwest Baptist University	2	3	3	2	
William Jewell College	1	2		1	
William Woods College		1			
Subtotal Independent Four-Year	46	50	41	48	27
Total Missouri Independent Institutions	48	55	45	55	28
Total Missouri Institutions	255	265	274	294	276

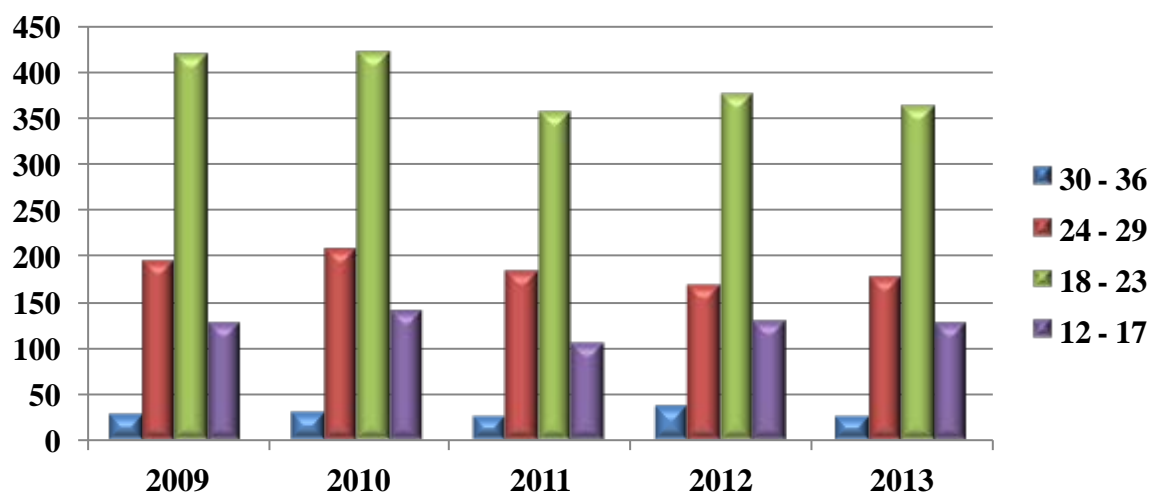
Fall First-Time Transfer Students From State of Institution of Origin

State of Institution of Origin	2009	2010	2011	2012	2013
Alabama		2	3	2	2
Alaska				1	
Arizona	7	6	6	5	9
Arkansas	24	37	38	34	45
California	8	8	11	4	13
Colorado	5	5	2	6	4
Delaware				1	
Florida	1	2	4	1	4
Georgia		2		4	1
Hawaii					2
Idaho	1				1
Illinois	5	6	10	7	11
Indiana	1	1	3	2	
Iowa	2	7	3	5	3
Kansas	87	87	70	93	99
Kentucky	1	2	1	2	2
Louisiana	2			5	1
Maine			1		
Michigan	2	1	4	1	2
Minnesota	2		4	4	6
Missouri	255	265	274	294	276
Mississippi	1	2		3	2
Nebraska	5	2	10	8	3
Nevada			2		
New Jersey			1		1
New Mexico	1	1			1
New York		2			2
North Carolina				1	
North Dakota			1		1
Ohio	3	1			5
Oklahoma	44	52	43	55	42
Oregon			2		2
Pennsylvania			1		2
Rhode Island		1		1	
South Carolina		2			
South Dakota			2	1	
Tennessee	2	5	1	2	
Texas	11	14	11	12	7
Utah	1	2	2	2	1
Vermont				1	
Virginia	1	1	2	2	1
Washington	2	4	1	2	3
West Virginia	3				1
Wisconsin	2	3	2	2	2
Wyoming				2	3
Unknown	110	81	61	16	22
Grand Total	589	604	576	581	582

ACT Score Range of Fall First-Time Students

ACT Score Range	2009	2010	2011	2012	2013
30 - 36	26	29	25	35	24
24 - 29	192	205	182	166	175
18 - 23	418	419	355	375	362
12 - 17	125	139	105	127	126
Less than 12	4	1	2	0	0
No Score	93	107	106	99	121
Total	858	900	775	802	808
MSSU Mean	21.3	21.3	21.4	21.6	21.4
25th Percentile	18	18	18	18	18
75th Percentile	24	24	24	24	24

ACT Score Range of Fall First-Time Students

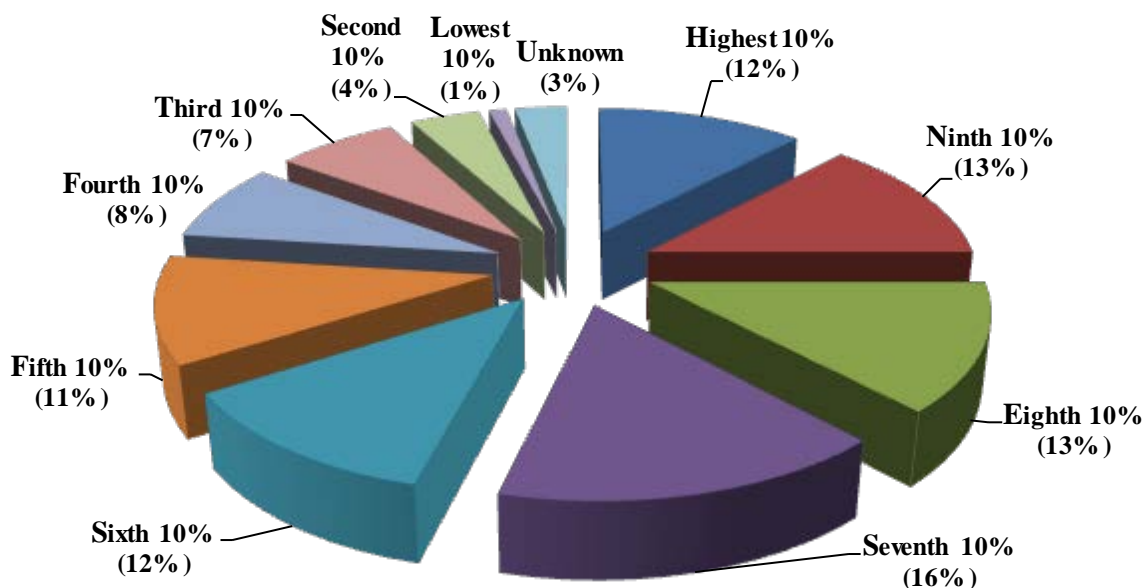


Sources: IPEDS Institutional Characteristics and Common Data Set

High School Rank of Fall First-Time Students

High School Rank	2009		2010		2011		2012		2013	
Highest 10%	97	11%	104	11%	81	10%	102	13%	98	12%
Ninth 10%	118	14%	133	14%	115	15%	113	14%	107	13%
Eighth 10%	134	16%	129	14%	104	13%	109	14%	104	13%
Seventh 10%	104	12%	98	10%	103	13%	84	10%	129	16%
Sixth 10%	106	12%	105	11%	84	11%	84	10%	93	12%
Fifth 10%	99	12%	123	10%	102	13%	84	11%	89	11%
Fourth 10%	75	9%	84	9%	71	9%	101	13%	67	8%
Third 10%	65	8%	54	6%	59	8%	57	7%	56	7%
Second 10%	33	4%	28	3%	32	4%	34	4%	34	4%
Lowest 10%	20	2%	19	2%	4	1%	9	1%	9	1%
Unknown	7	1%	23	2%	20	3%	25	3%	22	3%
Total	858	100%	900	100%	775	100%	802	100%	808	100%

Percent Of High School Rank of First-Time Students, Fall 2013

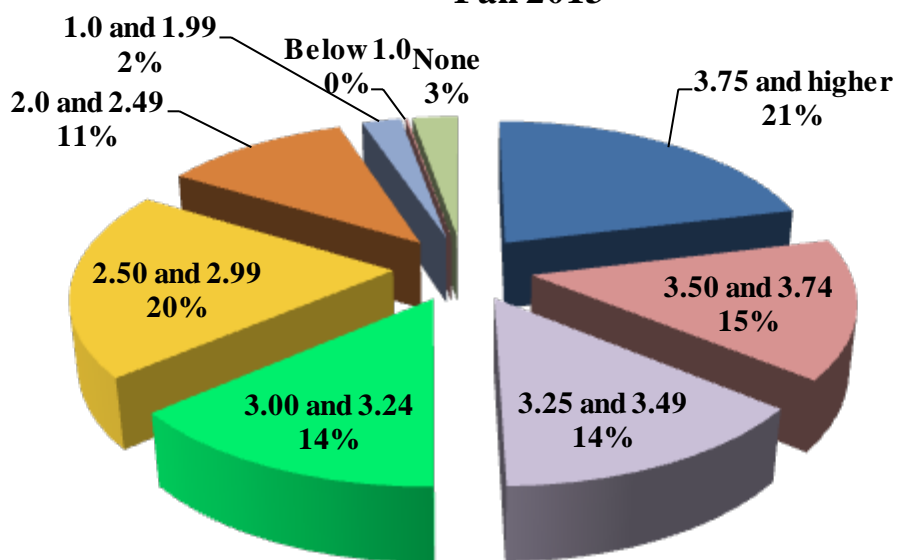


Sources: Common Data Set

High School GPA Range of Fall First-Time Students

HS GPA Range	2009		2010		2011		2012		2013	
3.75 and higher	181	21.1%	177	19.7%	147	19.0%	202	25.2%	171	21.2%
3.50 and 3.74	132	15.4%	148	16.4%	133	17.2%	94	11.7%	119	14.7%
3.25 and 3.49	119	13.9%	108	12.0%	94	12.1%	94	11.7%	112	13.9%
3.00 and 3.24	103	12.0%	112	12.4%	104	13.4%	103	12.8%	113	14.0%
2.50 and 2.99	207	24.1%	209	23.2%	186	24.0%	187	23.3%	161	19.9%
2.0 and 2.49	94	11.0%	105	11.7%	81	10.5%	89	11.1%	90	11.1%
1.0 and 1.99	13	1.5%	19	2.1%	10	1.3%	11	1.4%	19	2.4%
Below 1.0	0	0.0%	1	0.1%	0	0.0%	0	0.0%	1	0.1%
None	9	1.0%	21	2.3%	20	2.6%	22	2.7%	22	2.7%
Total	858	100%	900	100%	775	100%	802	100%	808	100%
Mean	3.2		3.2		3.2		3.2		3.2	

Percent of First-Time Students by High School GPA Range, Fall 2013

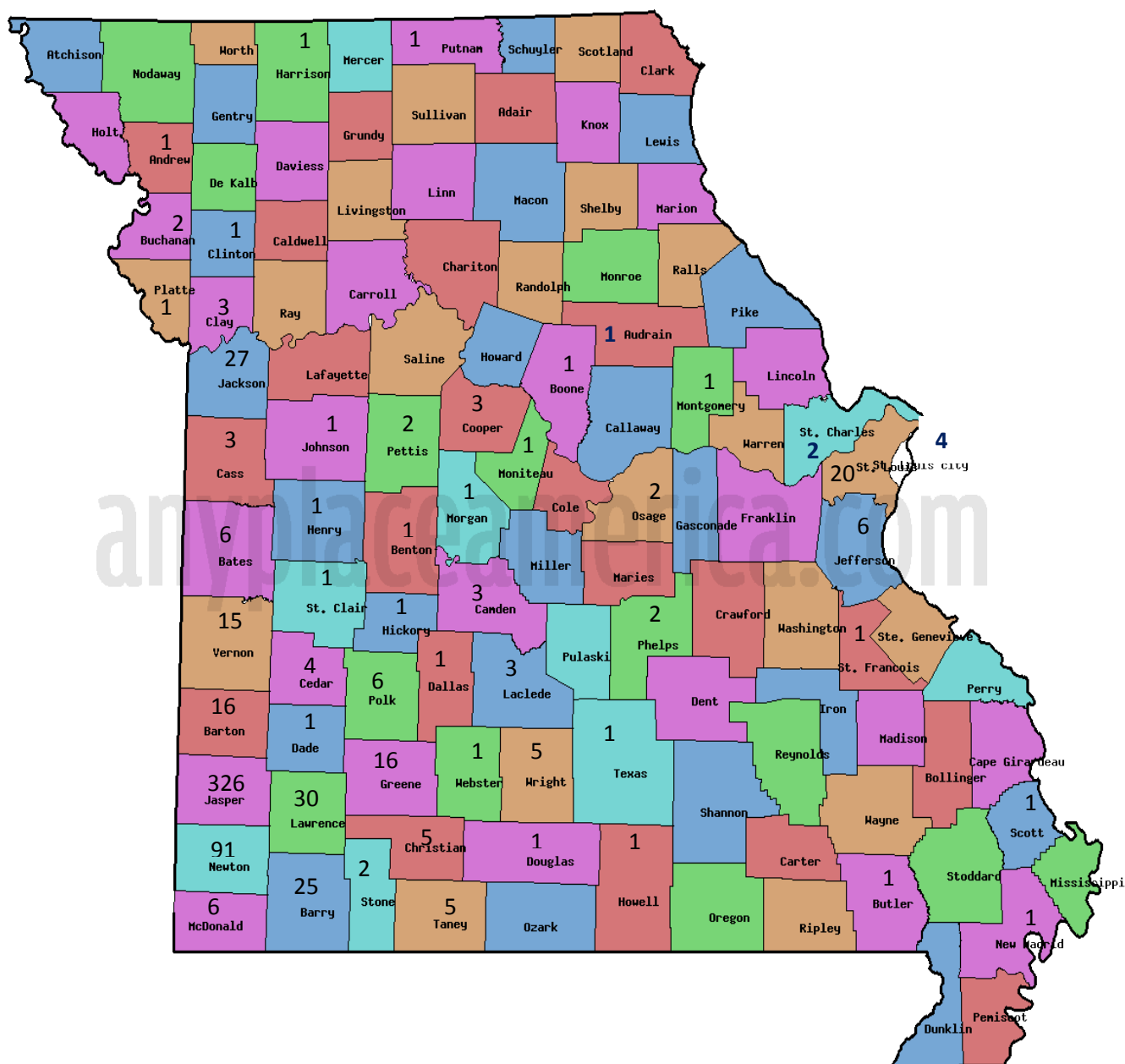


Sources: Common Data Set

County of Origin of Fall First-Time Students at First Application

Missouri County	2009	2010	2011	2012	2013	Missouri County	2009	2010	2011	2012	2013
Adair	1					Laclede	11	10	6	7	3
Andrew					1	Lawrence	31	27	29	29	30
Audrain					1	McDonald	21	9	13	10	6
Barry	25	25	17	23	25	Maries		1		1	
Barton	18	17	14	5	16	Miller		1		2	
Bates	2	15	6	3	6	Moniteau					1
Benton	2		1	2	1	Montgomery					1
Boone			2	1	1	Morgan	1		1	1	1
Buchanan					2	New Madrid					1
Butler					1	Newton	109	119	97	88	91
Caldwell	1					Nodaway		1	1		
Callaway	3	1				Osage		1	1	1	2
Camden	1	3	2	1	3	Ozark				1	
Cape Girardeau	1	2	2			Pettis	2	2		1	2
Cass	9	6	8	5	3	Phelps	3	2	2		2
Cedar	8	3	7	5	4	Platte		1	3	1	1
Christian	12	7	10	13	5	Polk	1	3	3	2	6
Clay	5	3	10	14	3	Pulaski	3	8	8	8	
Clinton		1		1	1	Putnam					1
Cole	1	2	2	1		Ralls			1		
Cooper	1				3	Randolph			1		
Crawford			4			Ray			1	1	
Dade	3	2	6	8	1	St. Charles	1	4	3	6	2
Dallas		2		1	1	St. Clair	2		3		1
Dent			1			St. Francois			1	2	1
Douglas	2	3			1	St. Louis	18	18	18	32	20
Franklin	3	6	4	3		Scott	1				1
Gasconade		1	2			Shannon		1			
Greene	18	18	18	16	16	Stone	8	9	6	7	2
Harrison				1	1	Taney	4	9	4		5
Henry		1			1	Texas		1	3	3	1
Hickory		1			1	Vernon	17	10	11	11	15
Howard				1		Warren	1	3	1	2	
Howell	1	5	3		1	Washington	1	1	1	1	
Jackson	11	20	21	20	27	Webster	2	5	1	2	1
Jasper	369	364	308	334	326	Wright	1	4		1	5
Jefferson	1	1	1	3	6	St. Louis (City)	6	2	2	4	4
Johnson			2	1	1	Unknown County	1		1		
Knox						Missouri Total	743	761	673	686	665

**County of Origin Map of First-Time Students at Time of First Application,
Fall 2013**



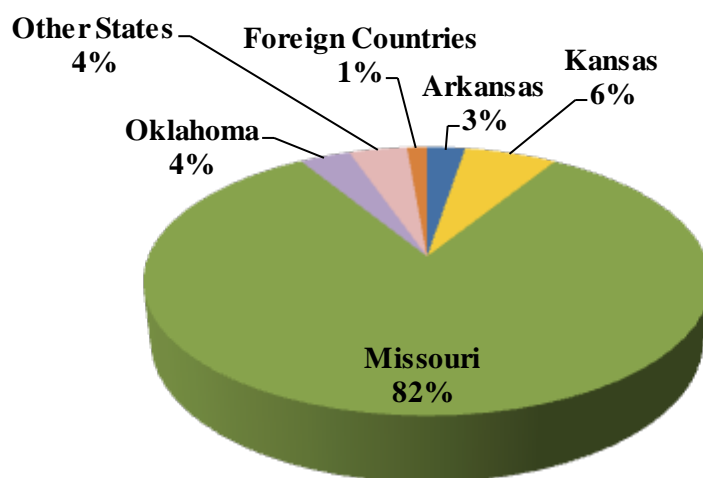
State of Origin of Fall First-Time Students at First Application

State	2009	2010	2011	2012	2013
Alabama			1	1	
Arizona			2		
Arkansas	23	41	15	15	21
California		2	3	1	2
Colorado	1	1	1		
Florida		3	3	3	5
Georgia					2
Hawaii		1			
Illinois	3	7	2	10	4
Iowa	1	1		2	1
Kansas	22	42	25	36	51
Kentucky			1		
Louisiana				9	3
Maryland	1			1	
Massachusetts				1	1
Michigan				1	
Minnesota	4	3	2	1	2
Mississippi	1				
Missouri	743	761	673	686	665
Montana					1
Nebraska	1	1			1
New Mexico					1
New York	2	1			
North Carolina					2
Ohio	1		1	1	1
Oklahoma	25	19	27	20	28
Oregon			1		
Pennsylvania	1	1			
South Dakota	2				
Tennessee		1			
Texas	20	3	8	4	4
Virginia	1				
Washington		1			1
Wisconsin			1	1	
Wyoming	1				
State Unknown	1				1
State Total	854	889	766	793	797

Country of Origin of Fall First-Time Students at First Application

Country	2009	2010	2011	2012	2013
Botswana	1				
China	1	2	1	2	1
Denmark		1			
Gambia	1	1		2	2
Germany		1	1		
Nepal		2			
Netherlands			1		
New Zealand			1		
Nigeria	1				
Saudi Arabia		3	4	3	8
Serbia				1	
United Kingdom		1			
Venezuela, Bolivarian Republic of				1	
Zambia			1		
Country Total	4	11	9	9	11
Total Enrollment	858	900	775	802	808

Percent of First-Time Students by Geographic Origin at First Application, Fall 2013



Sources: Census data & ODS Banner Query on 1/10/2014

Top Ten Feeder High Schools to MSSU

Fall 2012	
High Schools	Count
Joplin	114
Carthage	55
Webb City	51
Carl Junction R-1	43
Neosho	23
Diamond R-IV	14
Cassville R-IV	13
Seneca	13
Nixa	12
Sarcoxie R-II	12

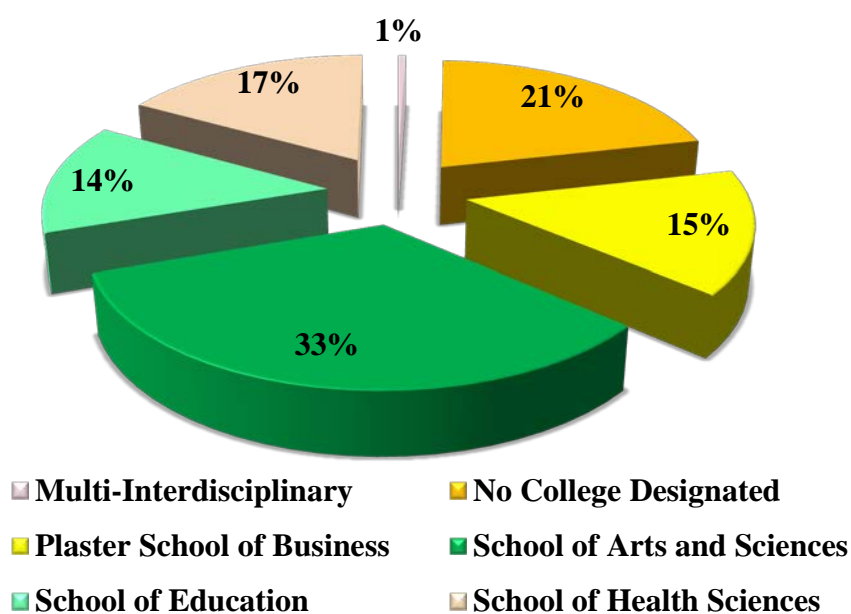
Fall 2013	
High Schools	Count
Joplin	137
Carl Junction R-1	57
Webb City	45
Carthage	29
Seneca	19
Riverton	14
Southwest	12
Nevada	12
Diamond R-IV	12
East Newton R-6	12

Source: IPEDS Fall Enrollment

Fall First-Time Students by School

School	2009		2010		2011		2012		2013	
	Count	%	Count	%	Count	%	Count	%	Count	%
Multi-Interdisciplinary	0	0%	1	0%	0	0%	0	0%	4	1%
No College Designated	348	41%	216	24%	184	24%	178	22%	169	21%
Plaster School of Business	128	15%	116	13%	112	15%	110	14%	120	15%
School of Arts and Sciences	180	21%	280	31%	241	31%	227	28%	270	33%
School of Education	149	17%	156	17%	137	18%	153	19%	109	14%
School of Health Sciences	53	6%	131	15%	101	13%	134	17%	136	17%
Total	858	100%	900	100%	775	100%	802	100%	808	100%

Percent of First-time Students by School, Fall 2013



Sources: School/Department of student's primary major as of Census date based on the school structure as of fall 2013

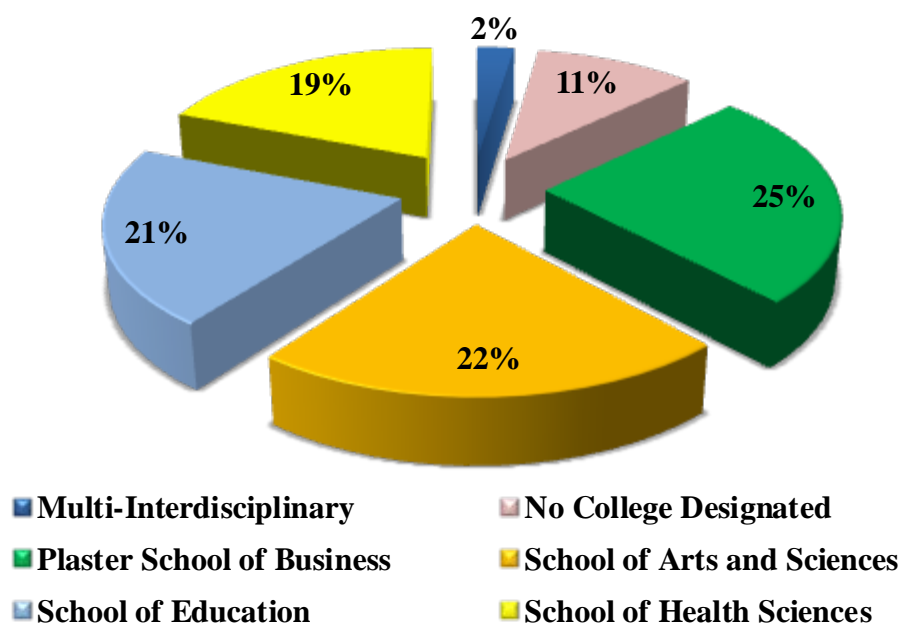
Fall First-Time Students by Department

Department	2009	2010	2011	2012	2013
Accounting	24	19	21	20	16
Art	7	20	13	13	14
Biology-Environmental Health	70	89	81	63	97
Communication	16	11	12	13	6
Computer Information Science	11	21	30	17	26
Criminal Justice	43	75	76	63	85
Dental Hygiene	10	24	18	8	24
English and Philosophy	4	17	7	4	7
Engineering Technology	22	8	11	8	16
Finance & Economics	5	6	1	6	3
Foreign Languages	6	4	3	3	3
General Business	23	26	17	18	10
Health Science	1	1	10	24	17
International Business	9	9	5	3	8
International Studies	1	3	3	4	4
Kinesiology	16	27	24	34	23
Marketing and Management	34	27	27	38	30
Mathematics	2	2		7	2
Medical Technology	1	4	6	3	
Multi-Interdisciplinary Studies		1			4
Music	9	20	10	13	13
Nursing	27	70	52	73	71
Paramedic		11		6	3
Physical Science	8	16	19	24	17
Psychology	28	32	32	31	25
Radiologic Technology	12	18	13	16	19
Respiratory Therapy	2	3	2	4	2
Social Science	12	17	13	14	18
Teacher Education	105	97	81	88	61
Theatre	2	6	4	6	4
Undeclared	348	216	184	178	169
Undeclared Business Administration					11
Total	858	900	775	802	808

Fall First-Time Transfer Students by School

	2009		2010		2011		2012		2013	
	Count	%	Count	%	Count	%	Count	%	Count	%
Multi-Interdisciplinary	3	1%	5	1%	6	1%	9	2%	14	2%
No College Designated	312	53%	211	35%	176	31%	93	16%	61	10%
Plaster School of Business	95	16%	96	16%	93	16%	110	19%	147	25%
School of Arts and Sciences	74	13%	114	19%	108	19%	131	23%	129	22%
School of Education	60	10%	86	14%	100	17%	132	23%	120	21%
School of Health Sciences	45	8%	92	15%	93	16%	106	18%	111	19%
Total	589	100%	604	100%	576	100%	581	100%	582	100%

Percent of First-time Transfer Students by School, Fall 2013



Sources: School/Department of student's primary major as of Census date based on the school structure as of fall 2013

Fall First-Time Transfer Students by Department

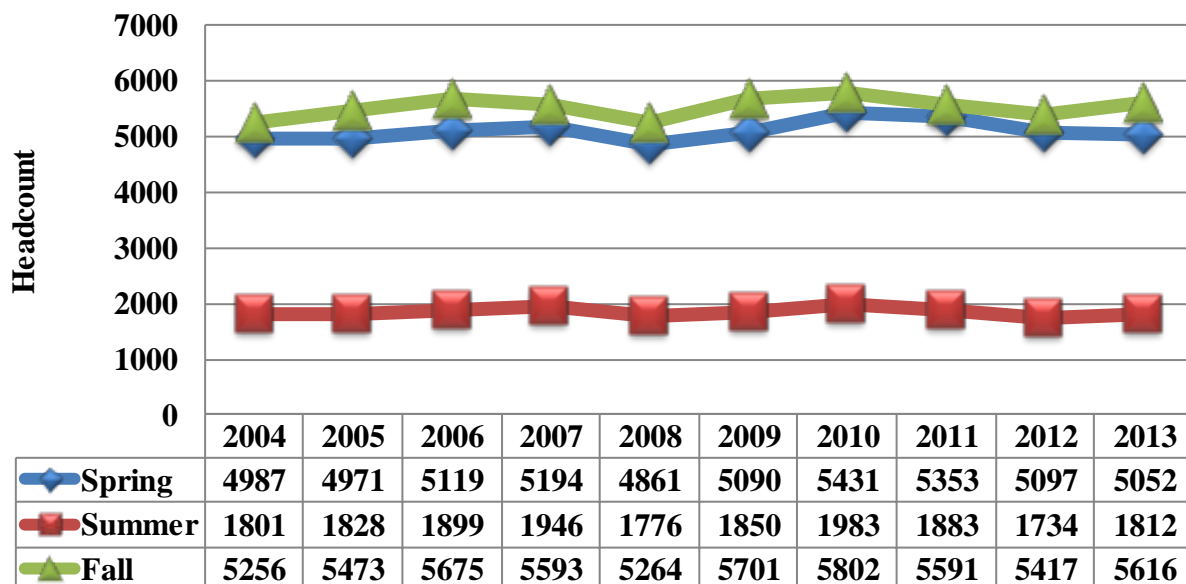
Major	2009	2010	2011	2012	2013
Accounting	18	26	16	24	26
Art	3	5	8	4	4
Art and Science Extra					2
Biology-Environmental Health	18	29	26	24	36
Communication	8	15	10	9	10
Computer Information Science	16	11	15	14	14
Criminal Justice	31	42	39	44	43
Dental Hygiene	22	28	5	3	11
English and Philosophy	2	4	6	2	3
Engineering Technology	5	4	2	3	11
Finance & Economics	6	3	4	4	13
Foreign Languages	2	4	3	3	1
General Business	11	12	10	20	18
Health Science	1	4	47	55	43
International Business	8	7	3	8	3
International Studies	3	1			3
Kinesiology	8	14	16	17	16
Marketing and Management	31	33	43	37	45
Mathematics			1	3	1
Medical Technology	2	2	1		3
Multi-Interdisciplinary Studies	3	5	6	9	14
Music	2		2	4	4
Nursing	13	28	36	36	38
Paramedic		15	2	7	
Physical Science	2	2	5	13	10
Psychology	9	14	21	18	34
Radiologic Technology	5	7	1	3	10
Respiratory Therapy	2	8	1	2	6
Social Science	3	12	7	21	8
Teacher Education	43	58	63	97	70
Theatre			1	4	4
Undeclared	312	211	176	93	61
Undeclared Business Administration					17
Total	589	604	576	581	582

Sources: School/Department of student's primary major as of Census date based on school structure as of fall 2013

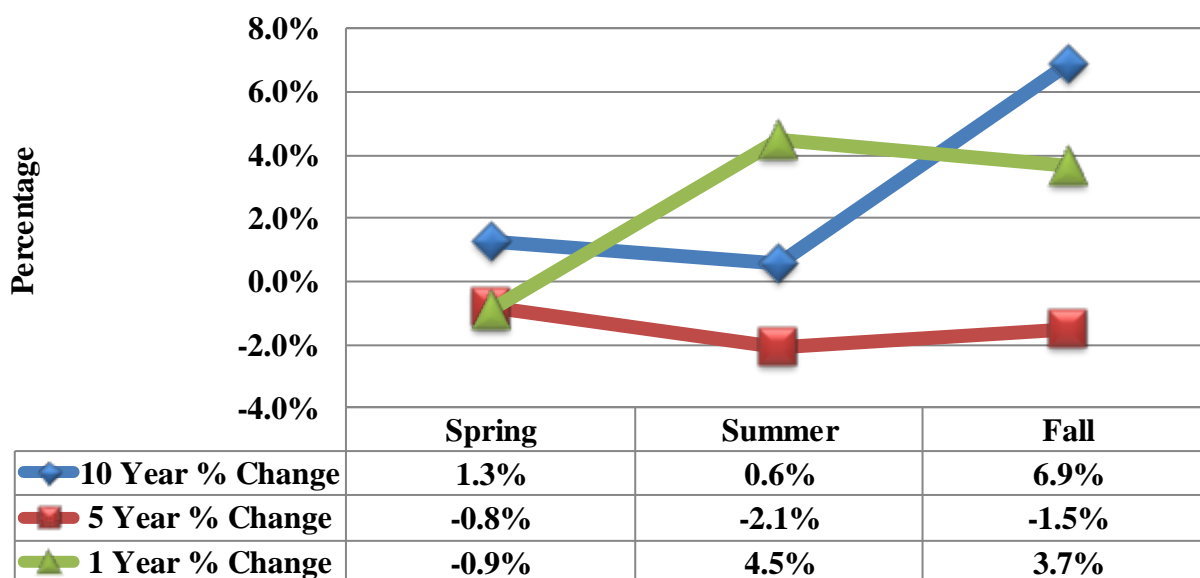
Enrollment



Ten-Year Enrollment Trends



Differences in 1, 5 & 10 Year Enrollment Trends



Sources: In-House Reports

Fall Undergraduate Student Profile

Race/Ethnicity	2009		2010		2011		2012		2013	
International	105	2%	120	2%	114	2%	125	2%	158	3%
Hispanic/Latino	149	3%	154	3%	155	3%	164	3%	201	3%
American Indian or Alaska Native	140	2%	169	3%	150	3%	152	3%	164	3%
Asian	76	1%	71	1%	77	1%	84	2%	103	2%
Black or African American	205	4%	223	4%	214	4%	230	4%	271	5%
Native Hawaiian or Other Pacific Islander	0	0%	3	0%	5	0%	5	0%	4	0%
White	4,579	81%	4,678	81%	4,496	81%	4,300	81%	4,415	79%
Two or more races	0	0%	7	0%	39	1%	59	1%	42	1%
Race and ethnicity unknown	385	7%	326	6%	286	5%	232	4%	229	4%
Total	5,639	100%	5,751	100%	5,536	100%	5,351	100%	5,587	100%

Age Breakdown	2009		2010		2011		2012		2013	
17 & younger	177	3%	253	4%	204	4%	216	4%	276	5%
18 - 19	1,276	23%	1,304	23%	1,132	20%	1,102	21%	1,151	21%
20 - 21	1,217	21%	1,253	22%	1,203	22%	1,230	23%	1,269	23%
22 - 24	1,059	19%	1,004	17%	1,059	19%	1,015	19%	1,070	19%
25 - 29	692	12%	728	13%	718	13%	686	13%	665	12%
30 - 34	394	7%	428	7%	402	7%	359	7%	407	7%
35 - 39	279	5%	263	4%	278	5%	247	4%	263	5%
40 - 49	351	6%	328	6%	352	6%	325	6%	304	5%
50 - 64	151	3%	147	3%	143	3%	134	2%	137	2%
65 and over	31	1%	34	1%	33	1%	30	1%	39	1%
Age unknown/unrec	12	0%	9	0%	12	0%	7	0%	6	0%
Total	5,639	100%	5,751	100%	5,536	100%	5,351	100%	5,587	100%

Gender	2009		2010		2011		2012		2013	
Male	2,347	42%	2,417	42%	2,354	43%	2,247	42%	2,354	42%
Female	3,292	58%	3,334	58%	3,182	57%	3,104	58%	3,233	58%
Total	5,639	100%	5,751	100%	5,536	100%	5,351	100%	5,587	100%

Enrollment Status	2009		2010		2011		2012		2013	
Full-time	4,110	73%	4,283	74%	4,039	73%	4,022	75%	4,125	74%
Part-time	1,529	27%	1,468	26%	1,497	27%	1,329	25%	1,462	26%
Total	5,639	100%	5,751	100%	5,536	100%	5,351	100%	5,587	100%

Sources: IPEDS Fall Enrollment Surveys

Fall Graduate Student Profile

Race/Ethnicity	2009		2010		2011		2012		2013	
Hispanic/Latino	1	2%	0	0%	0	0%	2	3%	0	0%
American Indian or Alaska Native	3	5%	2	4%	3	5%	3	5%	0	0%
Asian	0	0%	1	2%	0	0%	1	2%	0	0%
Black or African American	1	2%	0	0%	1	2%	2	3%	3	10%
White	45	72%	46	90%	30	55%	32	48%	21	72%
Two or more races	0	0%	0	0%	0	0%	1	2%	0	0%
Race and ethnicity unknown	12	19%	2	4%	21	38%	25	38%	5	17%
Total	62	100%	51	100%	55	100%	66	100%	29	100%

Age Breakdown	2009		2010		2011		2012		2013	
21 & younger	0	0%	1	2%	0	0%	0	0%	0	0%
22 - 24	13	21%	14	27%	3	5%	6	9%	5	17%
25 - 29	12	19%	16	31%	17	31%	19	29%	6	21%
30 - 34	10	16%	5	10%	13	24%	13	20%	6	21%
35 - 39	13	21%	8	16%	5	9%	7	10%	3	10%
40 - 49	11	18%	6	12%	14	26%	17	26%	8	28%
50 - 64	2	3%	1	2%	3	5%	4	6%	1	3%
65 and over	1	2%	0	0%	0	0%	0	0%	0	0%
Total	62	100%	51	100%	55	100%	66	100%	29	100%

Gender	2009		2010		2011		2012		2013	
Male	21	34%	17	33%	9	16%	18	27%	9	31%
Female	41	66%	34	67%	46	84%	48	73%	20	69%
Total	62	100%	51	100%	55	100%	66	100%	29	100%

Enrollment Status	2009		2010		2011		2012		2013	
Full-time	5	8%	1	2%	1	2%	2	3%	1	3%
Part-time	57	92%	50	98%	54	98%	64	97%	28	97%
Total	62	100%	51	100%	55	100%	66	100%	29	100%

Sources: IPEDS Fall Enrollment Surveys

Fall Enrollment by Race/Ethnicity and Gender

Race/Ethnicity	2009	2010	2011	2012	2013
Men					
International	42	60	57	63	99
Hispanic/Latino	59	66	68	77	88
American Indian or Alaska Native	57	65	62	63	66
Asian	32	35	34	41	53
Black or African American	124	141	137	145	170
Native Hawaiian or other Pacific Islander		1	3	1	1
White	1,913	1,931	1,876	1,763	1,777
Two or more races		4	16	20	16
Race and ethnicity unknown	141	131	110	92	93
Total men	2,368	2,434	2,363	2,265	2,363
Female					
International	63	60	57	62	59
Hispanic/Latino	91	88	87	89	113
American Indian or Alaska Native	86	106	91	92	98
Asian	44	37	43	44	50
Black or African American	82	82	78	87	104
Native Hawaiian or other Pacific Islander		2	2	4	3
White	2,711	2,793	2,650	2,569	2,659
Two or more races		3	23	40	26
Race and ethnicity unknown	256	197	197	165	141
Total women	3,333	3,368	3,228	3,152	3,253
Total					
	5,701	5,802	5,591	5,417	5,616

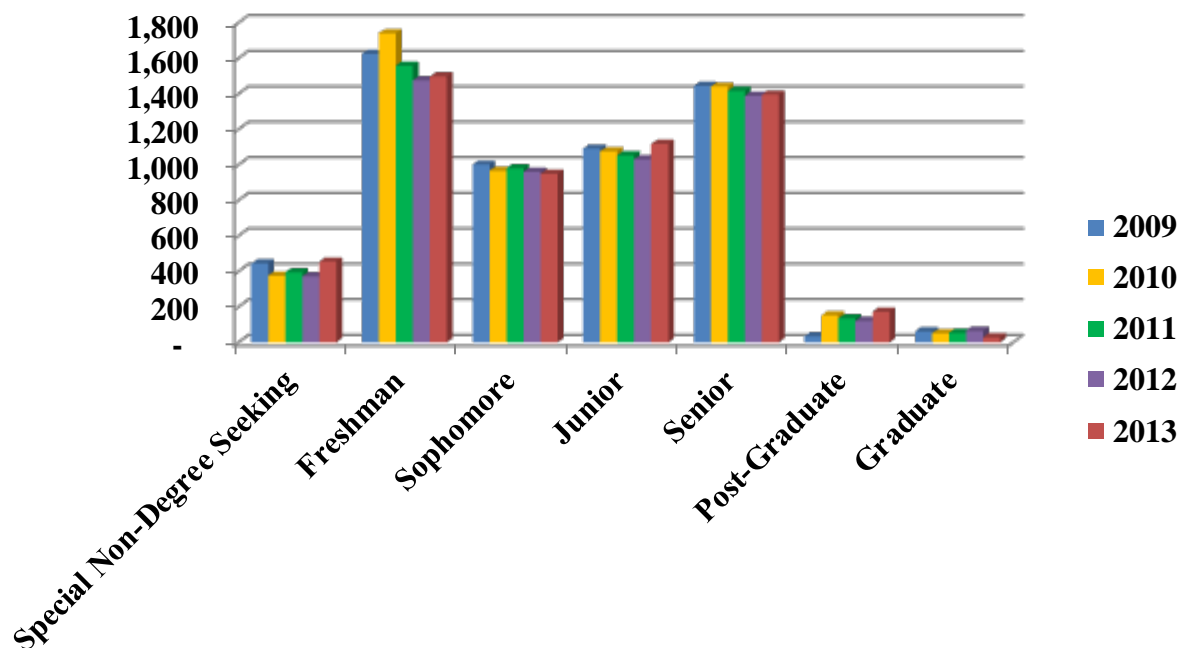
Sources: IPEDS Fall Enrollment Surveys

Fall Enrollment by Class Level

Classification	2009		2010		2011		2012		2013	
Special Non-Degree Seeking	444	8%	376	7%	394	7%	373	7%	455	8%
Freshman	1,625	29%	1,741	30%	1,558	28%	1,476	27%	1,497	27%
Sophomore	1,001	18%	967	17%	981	18%	961	18%	950	17%
Junior	1,091	19%	1,075	19%	1,053	19%	1,031	19%	1,117	20%
Senior	1,444	25%	1,440	25%	1,415	25%	1,388	26%	1,395	25%
Post-Graduate	34	1%	152	3%	135	2%	122	2%	173	3%
Graduate	62	1%	51	1%	55	1%	66	1%	29	1%
Total	5,701	100%	5,802	100%	5,591	100%	5,417	100%	5,616	100%
FTE*	4,531		4,599		4,358		4,295		4,400	
Full Time	4,115		4,284		4,040		4,024		4,126	
Part Time	1,586		1,518		1,551		1,393		1,490	

*FTE is calculated by dividing undergraduate credit hours by 15 plus graduate credit hours by 12 per semester

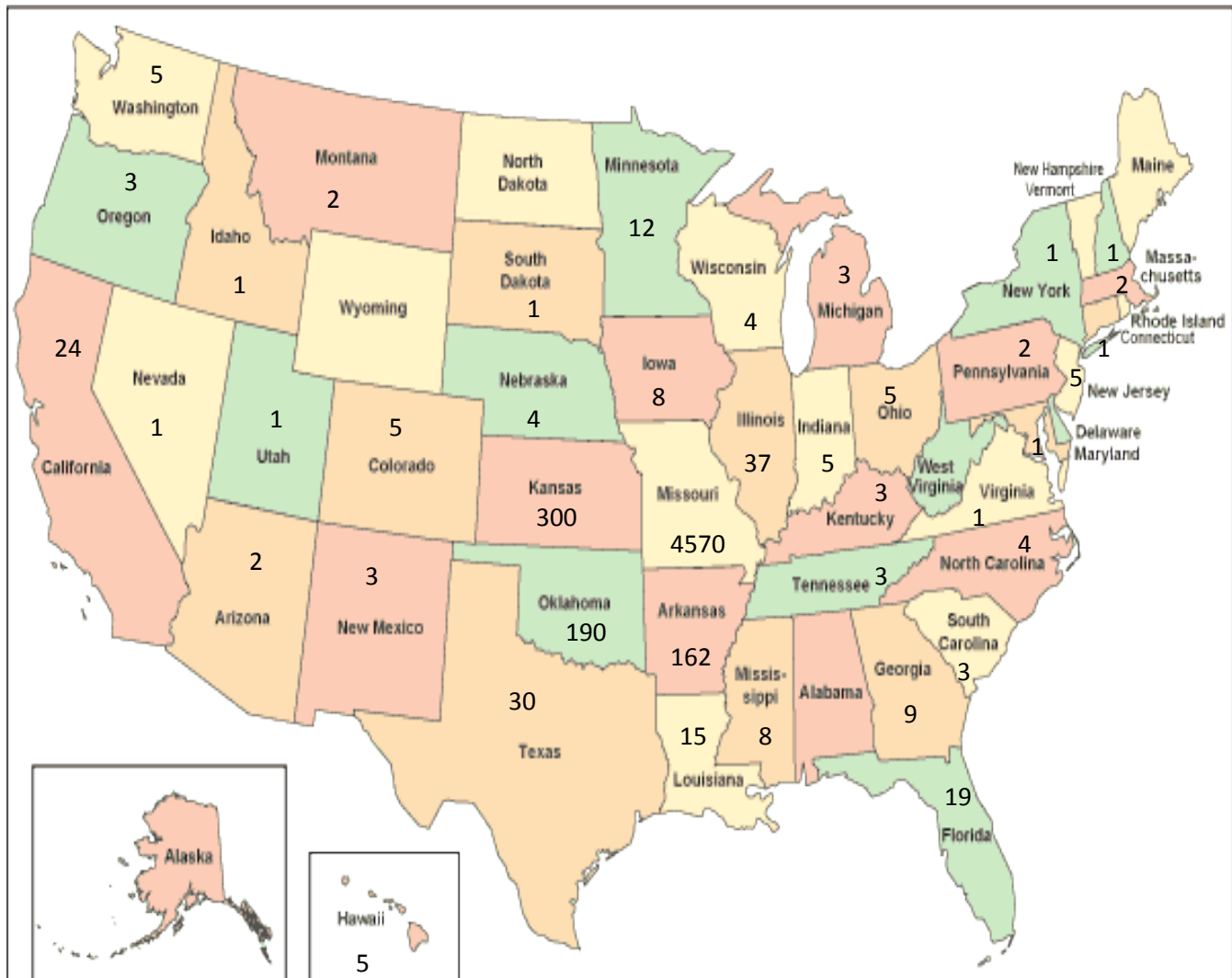
Fall Enrollment by Class Level



Place of Origin at First Application by State, Fall 2009-2013 Enrollment

States/U.S. Territories	2009	2010	2011	2012	2013
Alabama	6	3	2	2	
Alaska	1		1		
Arizona	2	1	7	2	2
Arkansas	148	166	168	158	162
California	14	16	32	26	24
Colorado	9	13	11	5	5
Connecticut	1	2		1	1
District of Columbia, DC	1	1			
Florida	10	15	15	14	19
Georgia	2			3	9
Hawaii	1	2	1	1	5
Idaho	1	1	1	1	1
Illinois	20	27	28	32	37
Indiana	9	6	5	2	5
Iowa	3	10	13	11	8
Kansas	265	269	230	243	300
Kentucky	2	2	2	1	3
Louisiana	5	3	3	14	15
Maine			1		
Maryland	2	3		1	1
Massachusetts	1	1		1	2
Michigan		3	2	2	3
Minnesota	7	9	13	11	12
Mississippi	8	8	3	2	8
Missouri	4,636	4,807	4,644	4,506	4,570
Montana	5	2	2	1	2
Nebraska	3	5	4	7	4
Nevada	1	1	2	1	1
New Hampshire				1	1
New Jersey	2		4	3	5
New Mexico	1	4	4	2	3
New York	4	5	4	3	1
North Carolina	2			1	4
North Dakota	1	1			
Ohio	7	3	2	3	5
Oklahoma	210	201	192	172	190
Oregon	2	1	4	2	3
Pennsylvania	3	3	2	2	2
South Carolina	1	1	1	1	3
South Dakota	2	2	2	3	1
Tennessee	2	7	4	3	3
Texas	48	35	32	31	30
Utah	2	3	1	1	1
Virgin Islands, US	2				
Virginia	2	2	2	2	1
Washington	5	4	4	3	5
West Virginia	2	1			
Wisconsin	2	5	4	6	4
Wyoming	3	1	1		
State Unknown	168	54	39	7	1
States/U.S. Territories Total	5,634	5,709	5,492	5,294	5,462

Place of Origin at First Application by State Map, Fall 2013 Enrollment



Sources: <http://www.state-maps.org/>

Place of Origin at First Application by Country, Fall 2009-2013 Enrollment

Country	2009	2010	2011	2012	2013
Australia			1	1	
Austria	1				
Bahamas		1			
Belarus				1	
Belgium				1	
Botswana	1	2	1	1	
Brazil	2	3	3	1	1
Canada	1	2	2	1	1
Chile	1				
China	4	10	13	20	18
Congo			1		1
Denmark		1	1		
Equatorial Guinea					1
El Salvador	1	1	1		
Finland	1	1			
France					2
Gambia	1	2	2	4	5
Germany		1	6	18	6
Haiti	7	7			
India	1	1		2	3
Iraq				1	1
Ireland					1
Italy					1
Japan	2	5	9	10	7
Jordan			1		1
Kenya		1	1	2	2
Korea, Republic of					4
Nepal		3	3	2	3
Netherlands			1	1	1
New Zealand			1		
Nicaragua		1	1	1	
Nigeria	2	3	3	2	2
Russian Federation			1		
Saudi Arabia		6	14	21	68
Serbia		1	1	2	2
Spain		1	1	1	
Sri Lanka		1	1	1	1
Taiwan, Province of China	1	1	1		
Thailand	1	1			
United Kingdom		2	1	1	1
Venezuela				1	
Venezuela, Bolivarian Republic of	1	2	2	1	1
Viet Nam				1	1
Virgin Islands, British	11	14	17	19	18
Zambia			1	1	1
Foreign Country Unknown	28	19	8	5	
Country Total	67	93	99	123	154
Total Enrollment	5,701	5,802	5,591	5,417	5,616

Sources: Census data and ODS Banner Query on 1/10/2014

Fall Undergraduate Enrollment by School/Department

School/Department	2009	2010	2011	2012	2013	Total
School of Arts and Sciences						
Art	82	92	91	78	91	434
Art & Science Extra				1	3	4
Biology-Environmental Health	297	358	381	355	393	1,784
Communication	119	133	122	114	109	597
Criminal Justice	377	483	472	467	469	2,268
English and Philosophy	66	77	76	60	61	340
Foreign Languages	40	43	37	29	32	181
International Studies	25	22	23	20	21	86
Mathematics	17	14	14	33	32	93
Music	32	45	45	46	47	183
Physical Science	77	67	76	103	116	362
Social Science	135	160	143	155	154	612
Theater	19	31	29	26	32	118
School of Arts and Sciences Total	1,286	1,525	1,509	1,487	1,560	7,062
* Criminal Justice moved from School of Health Sciences to School of Arts & Sciences (effective Fall 2013)						
Plaster School of Business						
Accounting	228	263	258	241	232	994
Business Extra					48	48
Computer Information Science	127	149	158	141	168	616
Engineering Technology	98	89	73	73	102	337
Finance & Economics	74	62	53	49	62	226
General Business	145	134	127	141	119	521
International Business	62	65	44	42	43	194
Marketing and Management	325	335	330	364	404	7,186
Plaster School of Business Total	1,059	1,097	1,043	1,051	1,178	10,122
** Computer Science & Engineering Technology moved from School of Health Sciences to School of Arts & Sciences (effective Fall 2013)						
School of Education						
Kinesiology	129	148	156	166	181	780
Psychology	176	196	197	172	199	940
Teacher Education	697	745	683	669	623	3,452
School of Education Total	1,002	1,089	1,036	1,007	1,003	5,172
School of Health Sciences						
Dental Hygiene	114	142	29	14	55	354
EMT/Paramedics	1	43	9	20	13	85
Health Science	60	53	259	299	308	919
Medical Technology	14	19	24	15	17	75
Nursing	257	346	357	347	350	1,657
Radiology Technology	46	70	34	30	39	173
Respiratory Therapy	38	46	10	11	15	120
School of Health Sciences Total	530	719	722	736	797	3,383
***School name changed from Health Sciences, Public Safety & Technology to Health Sciences (effective Fall 2013)						
Multi-Interdisciplinary						
Multi-Interdisciplinary Study****	75	96	111	136	128	546
No College Designated						
No Department Designated	1,687	1,225	1,115	934	921	5,883
Grand Total	5,639	5,751	5,536	5,351	5,587	27,864

****Multi-Interdisciplinary Study includes Bachelor of General Studies

Sources: Based on student's primary major as of Census date

Spring Undergraduate Enrollment by School/Department

School/Department	2010	2011	2012	2013	2014	TOTAL
School of Arts and Sciences						
Art	76	83	83	82	97	324
Art & Science Extra				3	5	
Biology-Environmental Health	331	347	349	323	342	1,350
Communication	125	130	101	108	109	464
Criminal Justice	413	509	486	449	425	1,857
English and Philosophy	69	77	77	57	60	280
Foreign Languages	33	38	30	39	25	140
International Studies	22	24	22	19	21	87
Mathematics	14	19	12	28	30	73
Music	28	44	36	39	47	147
Physical Science	73	63	77	114	98	327
Social Science	137	144	139	159	149	579
Theater	25	28	28	27	28	108
School of Arts and Sciences Total	1,346	1,506	1,440	1,447	1,436	5,736
* Criminal Justice moved from School of Health Sciences to School of Arts & Sciences (effective Fall 2013)						
Plaster School of Business						
Accounting	239	254	235	221	201	949
Business Extra				11	48	11
Computer Information Science	123	139	144	138	146	544
Engineering Technology	97	92	75	82	92	346
Finance & Economics	68	53	49	55	68	225
General Business	131	129	122	124	109	506
International Business	61	58	41	41	39	201
Marketing and Management	308	339	341	376	394	1,364
Plaster School of Business Total	1,027	1,064	1,007	1,048	1,097	4,146
** Computer Science & Engineering Technology moved from School of Health Sciences to School of Arts & Sciences (effective Fall 2013)						
School of Education						
Kinesiology	132	146	152	176	174	606
Psychology	195	183	175	159	171	712
Teacher Education	724	707	634	604	565	3,452
School of Education Total	1,051	1,036	961	939	910	4,770
School of Health Sciences						
Dental Hygiene	115	136	19	25	36	295
EMT/Paramedics	5	21	5	9	4	40
Health Science	63	58	253	286	313	660
Medical Technology	13	23	18	15	17	69
Nursing	300	358	333	328	328	1,319
Radiology Technology	48	69	25	22	32	164
Respiratory Therapy	41	49	9	17	13	116
School of Health Sciences Total	585	714	662	702	743	2,663
***School name changed from Health Sciences, Public Safety & Technology to Health Sciences (effective Fall 2013)						
Multi-Interdisciplinary						
Multi-Interdisciplinary Study****	82	112	136	157	137	487
No College Designated						
No Department Designated	1,257	842	830	691	707	5,883
Grand Total	5,348	5,274	5,036	4,984	5,030	23,685

****Multi-Interdisciplinary Study includes Bachelor of General Studies

Sources: Based on student's primary major as of Census date

Summer Undergraduate Enrollment by School/Department

School/Department	2009	2010	2011	2012	2013	Total
School of Arts and Sciences						
Art	21	20	16	19	17	72
Art & Science Extra				1	2	3
Biology-Environmental Health	92	111	105	120	120	456
Communication	36	37	35	32	40	144
Criminal Justice	126	163	165	133	121	582
English and Philosophy	18	19	18	16	16	69
Foreign Languages	11	10	15	7	11	43
International Studies	2	6	4	2	3	15
Mathematics	3	1	4	4	6	15
Music	7	4	11	6	4	25
Physical Science	20	19	13	25	36	93
Social Science	57	47	59	46	47	199
Theater	6	7	2	3	2	14
School of Arts and Sciences Total	399	444	447	414	425	1,730
* Criminal Justice moved from School of Health Sciences to School of Arts & Sciences (effective Fall 2013)						
Plaster School of Business						
Accounting	93	129	109	102	95	435
Business Extra					12	12
Computer Information Science	37	49	31	44	33	157
Engineering Technology	24	33	25	22	30	110
Finance & Economics	25	27	19	21	19	86
General Business	49	51	42	33	27	153
International Business	17	31	24	15	15	85
Marketing and Management	117	136	134	135	167	572
Plaster School of Business Total	362	456	384	372	398	1,610
** Computer Science & Engineering Technology moved from School of Health Sciences to School of Arts & Sciences (effective Fall 2013)						
School of Education						
Kinesiology	52	53	53	57	66	229
Psychology	49	58	60	41	46	205
Teacher Education	250	246	224	173	195	838
School of Education Total	351	357	337	271	307	1,272
School of Health Sciences						
Dental Hygiene	37	62	60	3	6	131
EMT/Paramedics	1	18	15	1	5	39
Health Science	45	29	27	129	144	329
Medical Technology	5	6	8	6	6	26
Nursing	81	98	113	79	84	374
Radiology Technology	18	22	25	5	3	55
Respiratory Therapy	16	29	20	3	9	61
School of Health Sciences Total	203	264	268	226	257	1,015
***School name changed from Health Sciences, Public Safety & Technology to Health Sciences (effective Fall 2013)						
Multi-Interdisciplinary						
Multi-Interdisciplinary Study	38	42	41	62	64	209
No College Designated						
No Department Designated	441	340	329	319	325	1,313
Grand Total of All Schools	1,794	1,903	1,806	1,664	1,776	7,149

****Multi-Interdisciplinary Study includes Bachelor of General Studies

Source: Based on student's primary major as of Census date

Fall Graduate Enrollment by School/Department

School/Department	2009	2010	2011	2012	2013	Total
<i>School of Arts and Sciences</i>						
Criminal Justice	35	28	31	31	25	150
<i>Plaster School of Business</i>						
General Business	1	0	0	0	0	1
<i>School of Education</i>						
Teacher Education	10	7	4	10	4	35
<i>School of Health Sciences</i>						
Dental Hygiene	0	1	1	1	0	3
Nursing	16	15	19	24	0	74
School of Health Sciences Total	16	16	20	25	0	77
Grand Total	62	51	55	66	29	263

Spring Graduate Enrollment by School/Department

School/Department	2010	2011	2012	2013	2014	Total
<i>School of Arts and Sciences</i>						
Criminal Justice	30	36	28	30	30	124
Social Science	14	0	0	0	0	14
School of Arts and Sciences	44	36	28	30	30	138
<i>Plaster School of Business</i>						
General Business	1	2	0	0	0	3
<i>School of Education</i>						
Teacher Education	21	25	16	15	9	77
<i>School of Health Sciences</i>						
Dental Hygiene	0	1	1	0	0	2
Nursing	17	15	16	23	3	71
School of Health Sciences Total	17	16	17	23	3	73
Grand Total	83	79	61	68	42	291

Summer Graduate Enrollment by School/Department

School/Department	2009	2010	2011	2012	2013	Total
<i>School of Arts and Sciences</i>						
Criminal Justice	24	26	39	22	21	132
<i>Plaster School of Business</i>						
General Business	0	1	0	0	0	1
<i>School of Education</i>						
Teacher Education	24	27	9	23	3	86
<i>School of Health Sciences</i>						
Dental Hygiene	0	2	1	1	0	4
Nursing	8	24	28	24	12	96
School of Health Sciences Total	8	26	29	25	12	100
Grand Total	56	80	77	70	36	319

Source: Based on student's primary major as of Census date

Credit Hour Production



Total Annual Credit Hours, Enrollment and Full-Time Equivalent

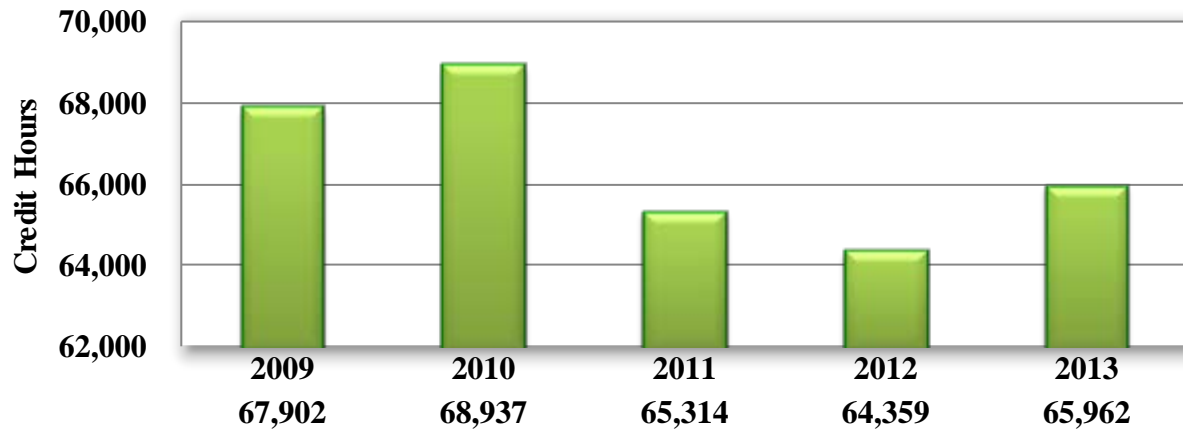
12-Month Credit Hour Activity					
	2008-2009	2009-2010	2010-2011	2011-2012	2012-2013
Total 12-month credit hour activity***	135,246	142,805	143,136	134,353	133,482
Undergraduate student credit hour activity	134,263	141,711	142,125	133,451	132,679
Graduate student credit hour activity	983	1,094	1,011	902	803
***Includes Fall, Spring & Summer Credit Hour Activity as well as in between semester credit activity, such as intersession, etc.					
12-Month Unduplicated Headcount and Full-time Equivalent Students					
Total 12-month unduplicated headcount	6,925	6,989	6,980	6,681	6,554
Undergraduate student unduplicated headcount	6,819	6,850	6,861	6,565	6,463
Graduate student unduplicated headcount	106	139	119	116	91
Total 12-month full-time equivalent (FTE) student enrollment	4,516	4,770	4,780	4,486	4,456
Undergraduate student FTE*	4,475	4,724	4,738	4,448	4,423
Graduate student FTE**	41	46	42	38	33

* Annual undergraduate student FTE is calculated based on undergraduate credit hours divided by 30

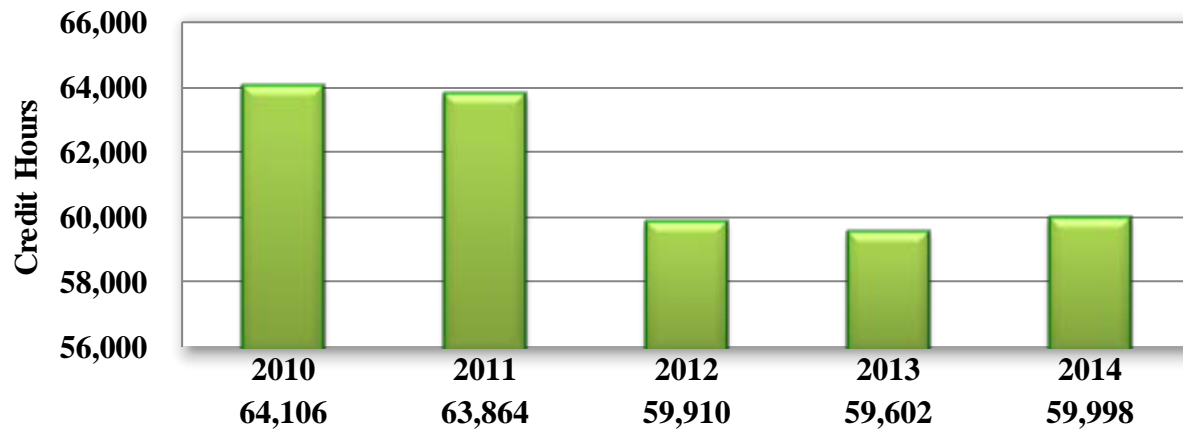
** Annual graduate student FTE is calculated based on graduate credit hours divided by 24

Sources: IPEDS 12 Month Enrollment Surveys

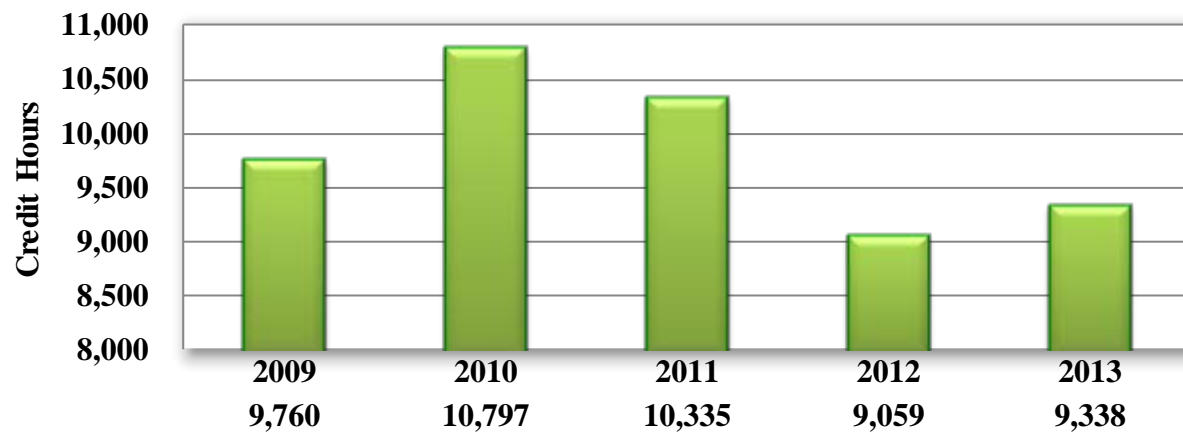
Fall Credit Hours



Spring Credit Hours



Summer Credit Hours

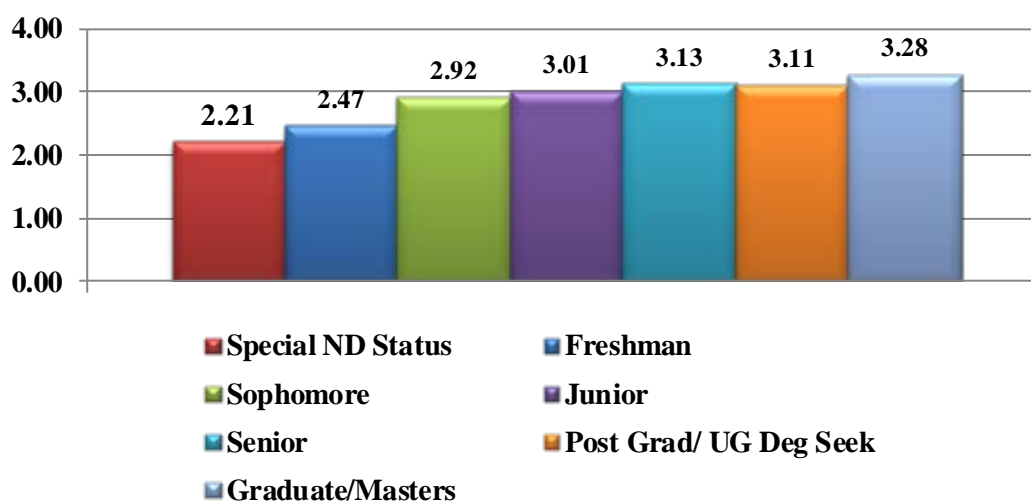


Sources: In-House Report (Census data)

Fall Cumulative GPA by Student Classification

Student Classifications	2009	2010	2011	2012	2013
Special ND Status	1.67	3.28	2.75	3.15	2.21
Freshman	2.44	2.45	2.41	2.46	2.47
Sophomore	2.93	2.88	2.87	2.91	2.92
Junior	3.07	3.06	3.05	3.04	3.01
Senior	3.16	3.14	3.16	3.15	3.13
Post Grad/ UG Deg Seek	3.28	3.36	3.19	3.10	3.11
Graduate/Masters	3.55	3.49	3.33	3.48	3.28

Fall 2013 Cumulative GPA by Student Classification



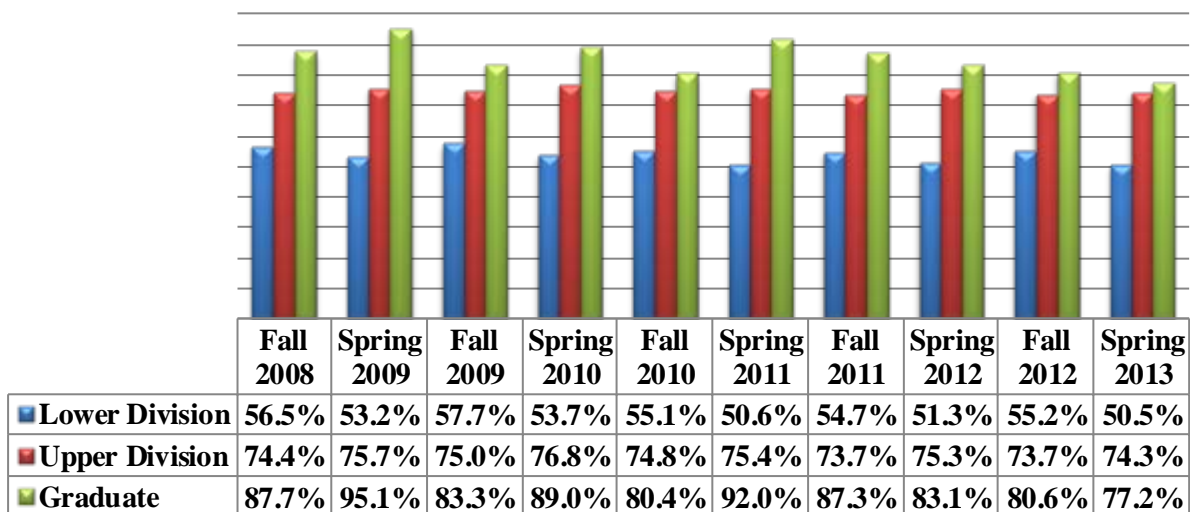
Source: Census data and Banner Query on 2/20/2014

Student Grade Distribution by Class Level

	2008-2009		2009-2010		2010-2011		2011-2012		2012-2013	
	Fall	Spring	Fall	Spring	Fall	Spring	Fall	Spring	Fall	Spring
Lower Division										
A	5,346	4,367	5,668	4,625	5,424	4,358	4,824	3,956	4,774	3,842
AU	4	6	7	1	6	2	2	5	6	9
B	3,502	3,013	3,729	3,077	3,614	2,956	3,363	2,564	3,283	2,698
C	2,001	1,810	2,014	1,836	2,094	1,832	1,966	1,585	1,885	1,649
CR	1,080	1,446	1,001	1,232	877	1,437	585	944	537	1,182
D	789	748	865	766	834	731	696	639	732	659
F	1,390	1,330	1,435	1,386	1,362	1,166	1,311	1,203	1,334	1,219
IN		3		1	1					2
IP						1		8		2
NK	34	14	30	14	28	13	10	13	21	18
NO	121			17	20	16	17	15	78	15
SA	159	78	137	91	247	147	155	103	200	101
SB	133	98	185	124	225	177	196	134	202	176
SC	102	114	179	164	208	216	170	158	217	165
SD	60	47	95	82	79	107	92	71	98	64
SF	143	109	153	165	193	204	226	196	222	235
SIN										
W	796	692	798	755	1,180	1,083	1,351	1,119	1,009	920
Total	15,660	13,875	16,296	14,336	16,392	14,446	14,964	12,713	14,598	12,956
Upper Division										
A	3,434	3,940	3,647	4,198	3,874	3,983	3,502	4,128	3,558	3,863
AU	2	3	1	4	15	3	1	1	5	2
B	1,821	1,999	2,039	2,197	2,056	2,267	2,188	2,229	2,073	2,174
C	841	870	947	897	953	993	1,021	961	964	946
CR	136	109	118	89	80	119	113	163	152	163
D	242	287	231	284	283	293	268	284	281	287
F	354	391	367	401	346	352	312	365	303	337
IN										1
IP										
NK	6	9	6	8	2	3	4	2		1
W	230	238	226	249	319	276	313	306	304	354
Total	7,066	7,846	7,582	8,327	7,928	8,289	7,722	8,439	7,640	8,128
Graduate										
A	39	53	40	53	31	68	38	47	44	62
B	11	5	5	12	10	1	10	12	6	9
C	2			6	2		2	1	2	1
CR									1	
F		1	5	1	2	3	4	4	2	10
IN										
W	5	2	4	1	6	3	1	7	7	10
Total	57	61	54	73	51	75	55	71	62	92

Sources: Banner query on 2/20/2014

Percentage of A and B Grades by Level



Source: Banner Query on 2/20/2014



Degrees Conferred



Degrees and Certifications Offered as of Spring 2014

School of Arts and Sciences

Art- Visual (BA)	AR01
Fine Arts-Studio (BFA)	AR02
Fine Arts-Graphic Design (BFA)	AR03
Bachelor of Applied Sci (BAS)	BAS0
Biology&Biochem-ForensicSc(BS)	BC00
Biochemistry (BS)	BC01
Biology CIS-Bioinformatics(BS)	BI00
Biology-Btch Mic Gen (BS)	BI01
Biology-Ecol Mar Cons (BS)	BI02
BioChem&Biology-ForensicSc(BS)	BI03
Biology-Gen Bio or Und (BS)	BI04
Biology-PhysOccup Thpy (BS)	BI05
Biology-Preprof-Dent (BS)	BI06
Biology-Preprof-Med (BS)	BI07
Biology-Preprof-Optom (BS)	BI08
Biology-Preprof-Pharm (BS)	BI09
Biology-Preprof-Vet (BS)	BI10
Chemistry (BS)	CH00
Chemistry (BA)	CH01
CrimJustAd/CIS-Comp Foren (BS)	CJ00
Criminal Justice Adm (BS)	CJ01
Juvenile Justice (BS)	CJ03
Communication-Public Rela (BA)	CO00
Communication-Mass (BA)	CO02
Communication-Speech (BA)	CO03
Communication-Speech (BS)	CO04
Communication-Public Rela (BS)	CO05
Communications-Mass (BS)	CO06
Environmental Hlth (BS)	EH02
Environmtl Health-Distant (BS)	EH04
English-Creative Writ (BA)	EN01
English-Lit Studies (BA)	EN03
English-Prof/Tech Writ (BA)	EN04
French (BA)	FL00
German (BA)	FL01
Spanish (BA)	FL02
Medical Interpretation (Certif)	FL86
Criminal Justice-SEMO(MS)	GR04
History (BA)	HI00
International Studies (BA)	IS00
Law Enforcement-Opt A (AS)	LE00
Law Enforcement-Opt B (AS)	LE01
Basic Fire Academy (Certif)	LE80
Peace Officer Train (Certif)	LE81
Mathematics (BS)	MA00
Math/CIS-ComputationalMath(BS)	MA01

School of Arts and Sciences

Music (BA)	MU00
Music Industry (BA)	MU01
Physics (BS)	PH00
Physics-Engineering (BS)	PH01
Paralegal Studies Certificate	PL81
Political Science (BS)	PS00
Political Science (BA)	PS01
Sociology (BA)	SO00
Sociology (BS)	SO01
Theatre (BA)	TH00

* Criminal Justice moved from School of Health

Arts & Sciences (effective Fall 2013)

Plaster School of Business

Accounting (BSBA)	AC00
CIS/Biology-Bioinformatics(BS)	CI00
CIS/Math-ComputationalMath(BS)	CI02
CIS-Info Systems w/GenBusMinor	CI03
CIS-Info Technology (BS)	CI04
CIS/CrimJustAdm-Comp Foren(BS)	CI05
CIS-Comp Tech (BS) DDET (AS)	CI06
CIS-Info Systems (AS)	CI07
CIS-InfoTech ProcessImproMinor	CI11
Fin/Econ-Pers Fin Pln (BSBA)	EC03
Fin/Econ-Economics (BSBA)	EC04
Fin/Econ-Finance Conc (BSBA)	EC05
General Business Business (BSBA)	GB00
Business Major-Undeclar (BSBA)	GB30
Business Administ-NWMSU (MBA)	GR05
International Business (BSBA)	IB00
Internat'l Business CGBP(BSBA)	IB01
Industrial Engineer Tech (BS)	IE00
DDET-DraftingDesignEngTech(AS)	IE01
Manufacturing Engin Tech (AS)	IE02
CADD Operator (Certif)	IE80
CNC Operator (Certif)	IE81
Quality Tech (Certif)	IE83
Management (BSBA)	MM00
Marketing (BSBA)	MM03
Human ResourceManagement(BSBA)	MM04
Entrepreneurship (Certif)	MM86
Six Sigma Green Belt (Certif)	SS80
Six Sigma Black Belt (Certif)	SS81

Degrees and Certifications Offered as of Spring 2014 (continued)

School of Education

Hlth Promotion & Wellness (BS)	KI00
Psychology (BS)	PY00
Psychology (BA)	PY01
E Ed-Erly Ch {Birth-3} (BSE)	EE01
El Ed (1-6) Sp Ed {K-12} (BSE)	EE03
Elem Ed 1-6 TESOL {K-12} (BSE)	EE04
Elem Ed-Business {1-6} (BSE)	EE05
Elem Ed-Sci {1-6} (BSE)	EE06
Elementary Ed-Art {1-6} (BSE)	EE07
Elementary Ed-Lang Art (BSE)	EE08
Elementary Ed-Math (BSE)	EE09
Elementary Ed-Music (BSE)	EE10
Elem Ed-Social Studies (BSE)	EE11
Elem Ed-Eng/Language Arts(BSE)	EE12
Mid Sch-Eng/Soc Stdy (BSE)	EM00
Mid Sch-Bus/Eng {5-9} (BSE)	EM01
Mid Sch-Bus/Soc {5-9} (BSE)	EM02
Mid Sch-Eng/Math {5-9} (BSE)	EM05
Mid School-Eng/Sci {5-9} (BSE)	EM06
Mid School-Id Tc Soc {5-9} (BSE)	EM07
Mid School-Ind Tc Eng {5-9} (BSE)	EM09
Mid School-Math/Bus {5-9} (BSE)	EM10
Mid Sch-Math/In Tv {5-9} (BSE)	EM11
Mid Sch-Math/Sp&Th {5-9} (BSE)	EM12
Mid School-Soc Stu Mth (BSE)	EM13
Mid Sch-Sci/Math {5-9} (BSE)	EM14
Mid Sch-Sci/Bus {5-9} (BSE)	EM15
Mid Sch-Sci/Ind Tc {5-9} (BSE)	EM16
Mi Sch-Soc Stu /Sc {5-9} (BSE)	EM17
Mid Sch-Sp Th En {5-9} (BSE)	EM18
Mid Sch-Sp&Th/Scie{5-9} (BSE)	EM19
Mi Sch-Sp&Th/Socst {5-9} (BSE)	EM20
Mid Sch-Math (BSE)	EM21
Mid Sch-Comm Arts/English(BSE)	EM22
Mid Sch-Science (BSE)	EM23
Mid Sch-Social Studies (BSE)	EM24
Sec Ed-Bio/Unifd Sci 9-12(BSE)	ES00
Sec Ed-Chem/Unif Sci 9-12(BSE)	ES01
Sec Ed-Phys Unif Sci 9-12(BSE)	ES02
Sec Ed-Soc Sci-Soclg9-12(BSE)	ES03
Sec Ed-Chemistry {9-12} (BSE)	ES04
Sec Ed-German {K-12} (BSE)	ES05
Sec Ed-Phys Ed {K-12} (BSE)	ES06
Sec Ed-Physics {9-12} (BSE)	ES07
Secondary Ed-Art {K-12}(BSE)	ES08
Secondary Ed-Biology 9-12(BSE)	ES09
Secondary Ed-Bus 9-12 (BSE)	ES10
Sec Ed-Double Music K-12(BSE)	ES11
Secondary Ed-Eng 9-12 (BSE)	ES12

School of Education

Secondary Ed-French K-12 (BSE)	ES13
Sec Ed-Instrumental K-12 (BSE)	ES14
Secondary Ed-Math 9-12 (BSE)	ES15
Sec Ed-Piano-Inst (BSE)	ES16
Second Ed-Piano-Vocal (BSE)	ES17
Sec Ed-Soc & Pol Sci 9-12(BSE)	ES18
Sec Ed-Soc Sci/History 9-12BSE	ES19
Secondary Ed-Spanish K-12(BSE)	ES20
Sec Ed-Speech & Drama (BSE)	ES21
Secondary Ed-Vocal K-12 (BSE)	ES22
Sec Ed-Ind Tech {9-12} (BSE)	ES23
Instruct Tech-NMSU (MSE)	GR00
MA Teaching-MSU (MAT)	GR01
Early Childhood-NWMSU (MSE)	GR06

School of Health Sciences

Dental Hygiene (AS)	DH00
Dental Hygiene Applicnt (AS)	DH01
MS in Dental Hyg-UMKC (MS)	GR03
Health Science (BS)	HS00
Medical Tech (BS)	MT00
Pre Medical Tech (BS)	MT01
MS in Nursing-UMKC (MSN)	GR02
Nursing (BS)	NU00
Nursing Applicant (BS)	NU01
Emergency Med Tech (Certif)	PA80
Paramedic (Certif)	PA81
Radiologic Tech Applicant (AS)	RA00
Radiologic Technol (AS)	RA01
Respiratory Therapy (AS)	RE00
Resp Thpy Applicant (AS)	RE01

***School name changed from Health Sciences, Public Safety & Technology to Health Sciences (effective Fall 2013)

** Computer Science & Engineering Technology moved from School of Health Sciences to Plaster School of Business (effective Fall 2013)

Multi-Interdisciplinary

Bachelor of Gen Studies (BGS)	BG00
-------------------------------	-------------

No College Designated

No Major	0000
Degree Seeking-Undeclared	OT01

**Number of Degrees Conferred by Program and Award Level
(Snr 2012, Fall 2012 & Spg 2013)**

Category *	Associate		Bachelor's		Master's		CIP 2010 Categories
Communication/ journalism	0	0%	26	3.1%	0	0%	9
Computer and information sciences	24	12%	24	2.8%	0	0%	11
Education	0	0%	100	11.8%	2	5%	13
Engineering technologies	13	7%	7	0.8%	0	0%	15
Foreign languages, literatures, and linguistics	0	0%	12	1.4%	0	0%	16
English	0	0%	12	1.4%	0	0%	23
Liberal arts/general studies	0	0%	94	11.1%	0	0%	24
Biological/life sciences	0	0%	71	8.4%	0	0%	26
Mathematics and statistics	0	0%	6	0.7%	0	0%	27
Kinesiology	0	0%	25	3.0%	0	0%	31
Physical sciences	0	0%	3	0.4%	0	0%	40
Psychology	0	0%	25	3.0%	0	0%	42
Criminal Justice	96	50%	105	12.4%	13	32%	43
Social sciences	0	0%	29	3.4%	0	0%	45
Visual and performing arts	0	0%	17	2.0%	0	0%	50
Health professions and related programs	60	31%	118	14.0%	16	39%	51
Business/marketing	0	0%	164	19.4%	10	24%	52
History	0	0%	7	0.8%	0	0%	54
	193	100%	845	100%	41	100%	

* Students awarded multiple degrees within the same program classification (6-digit CIP) and award category can only be counted once according to IPEDS instructions.

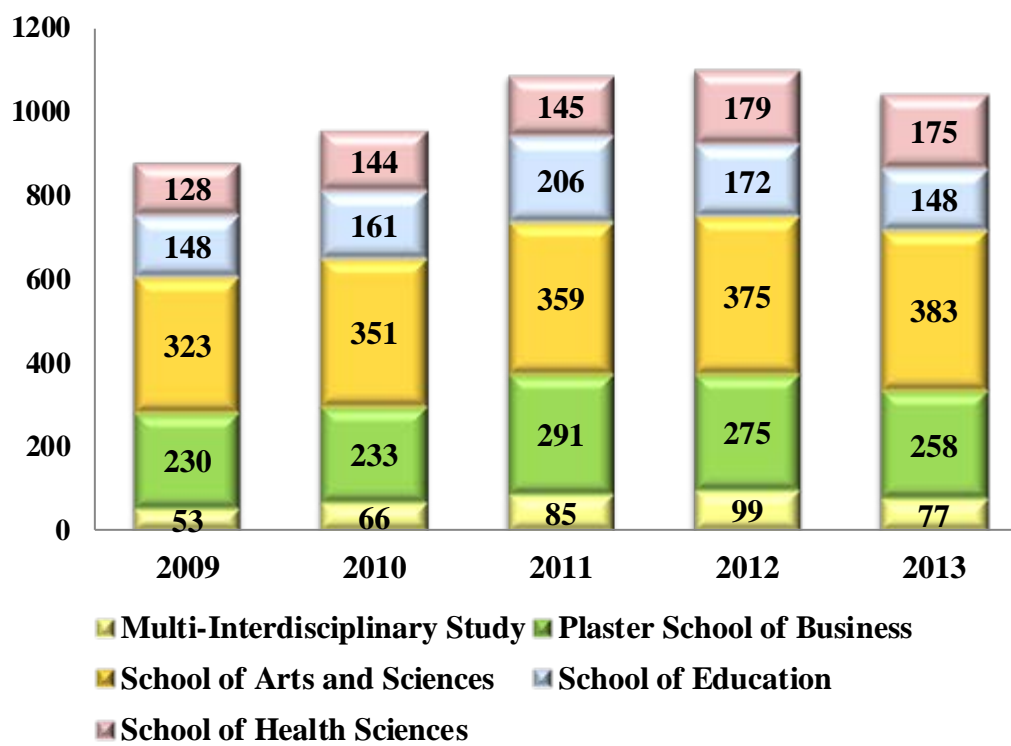
Sources: IPEDS Completions Surveys

Number of Undergraduate Degrees Awarded by School by Academic Year (Fall, Spring & Summer)

School	2009	2010	2011	2012	2013
Multi-Interdisciplinary Study	53	66	85	99	77
Plaster School of Business	230	233	291	275	258
School of Arts and Sciences	323	351	359	375	383
School of Education	148	161	206	172	148
School of Health Sciences	128	144	145	179	175
Grand Total of all Schools	882	955	1,086	1,100	1,041

Note: The degrees awarded by academic year may not match what is reported in IPEDS, which reports degrees awarded based on Summer, Fall & Spring.

Number of Undergraduate Degrees Awarded by School by Academic Year (Fall, Spring & Summer)



Sources: Banner query on 2/20/2014

**Number of Undergraduate Degrees Awarded by Department by
Academic Year (Fall, Spring & Summer)**

Department	2009	2010	2011	2012	2013	Total
Accounting	45	42	54	55	57	253
Art	13	13	9	14	2	51
Art & Science Extra					1	1
Biology-Environmental Health	46	52	38	53	72	261
Communication	28	32	36	29	27	152
Computer Information Science	33	38	36	35	48	190
Criminal Justice	152	158	179	188	191	868
Dental Hygiene	38	43	42	43	37	203
Engineering Technology	6	16	16	23	18	79
English and Philosophy	19	21	17	18	12	87
Finance & Economics	17	17	21	23	11	89
Foreign Languages	14	16	18	12	13	73
General Business	18	21	18	18	17	92
Health Science	32	32	44	66	62	236
International Business	15	11	15	13	7	61
International Studies	5	1	8	6	4	24
Kinesiology	17	21	22	15	24	99
Marketing and Management	96	88	131	108	100	523
Mathematics	3	11	4	7	6	31
Medical Technology		2	2		3	7
Multi-Interdisciplinary Study	53	66	85	99	77	380
Music	6	5	5	5	6	27
Nursing	37	44	34	49	47	211
Physical Science	5	11	9	11	10	46
Psychology	33	29	47	40	22	171
Radiology Technology	9	7	9	8	8	41
Respiratory Therapy	12	16	14	13	18	73
Social Science	28	25	32	27	35	147
Teacher Education	98	111	137	117	102	565
Theatre	4	6	4	5	4	23
Grand Total of all Departments	882	955	1,086	1,100	1,041	5,064

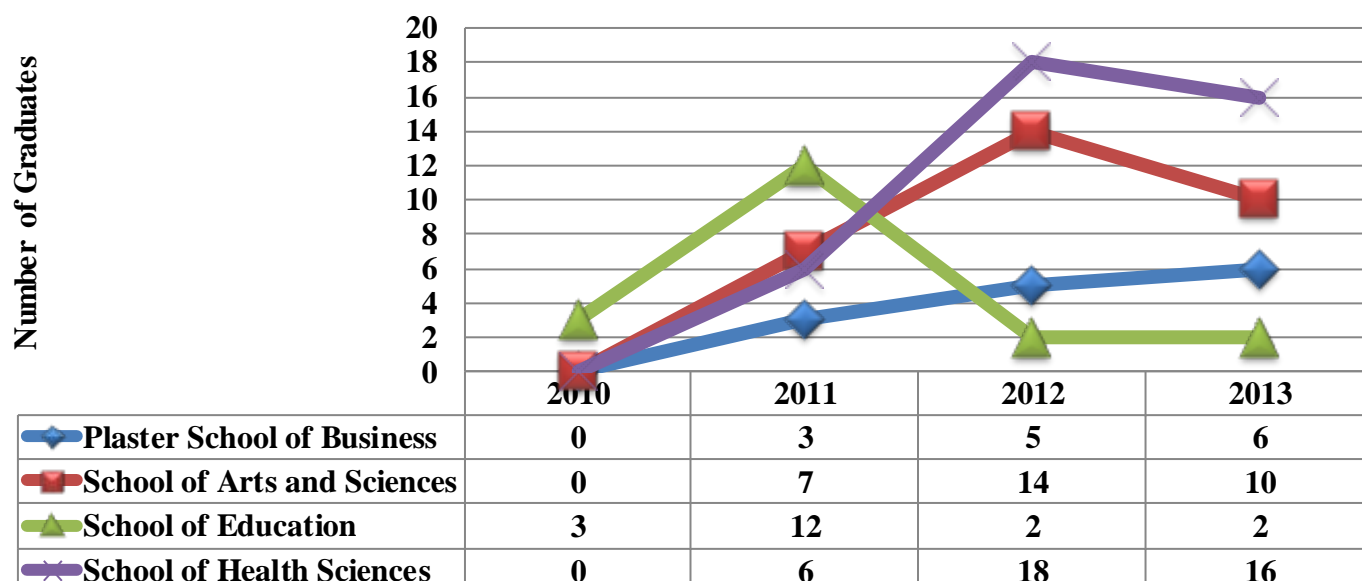
Note: The degrees awarded by academic year may not match what is reported in IPEDS, which reports degrees awarded based on Summer, Fall & Spring.

Number of Graduate Degrees Awarded by School by Academic Year (Fall, Spring & Summer)

School/Department	2010	2011	2012	2013
Plaster School of Business				
<i>Business Extra</i>	0	3	5	6
School of Arts and Sciences				
Criminal Justice	0	7	14	10
School of Education				
<i>Teacher Education</i>	3	12	2	2
School of Health Sciences				
<i>Dental Hygiene</i>	0	0	0	1
<i>Nursing</i>	0	6	18	15
Grand Total	3	28	39	34

Note: The degrees awarded by academic year may not match what is reported in IPEDS, which reports degrees awarded based on Summer, Fall & Spring.

Number of Graduate Degrees Awarded by Each School by Academic Year (Fall, Spring & Summer)



Retention and Graduation

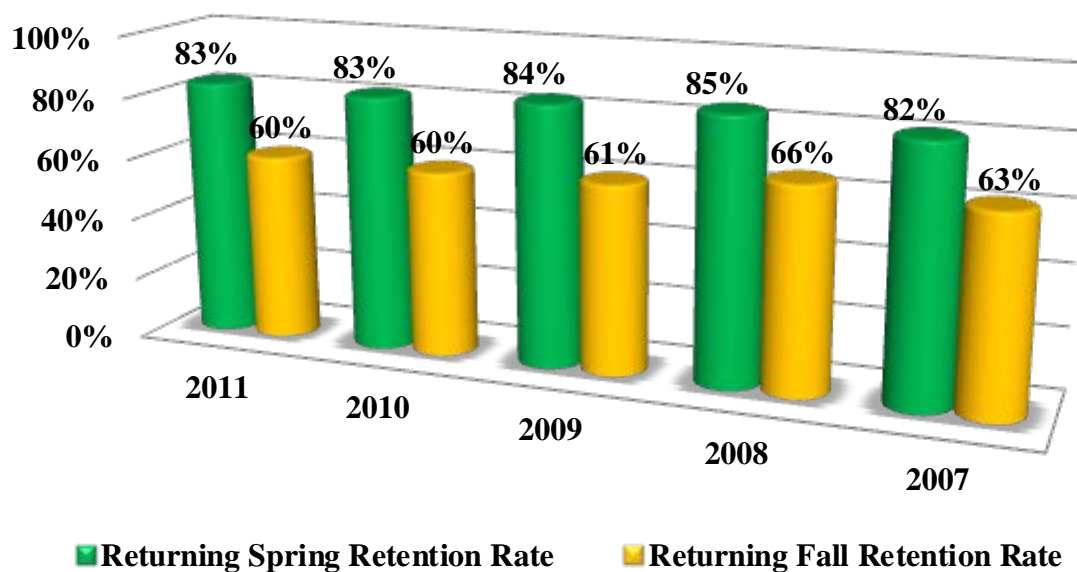


Fall First-Time, Full-Time Bachelor's Seeking Retention Rates

Fall	First-Time, Full-Time Bachelor's Seeking Students	Total Exclusions	Adjusted Subcohort	Students Returning in Subsequent Spring	Students Returning in Subsequent Fall	Returning Spring Retention Rate	Returning Fall Retention Rate
2013	687	0	687	582		85%	
2012	704	4	700	588	463	84%	66%
2011	665	0	665	555	402	83%	60%
2010	789	2	787	650	470	83%	60%
2009	780	1	779	657	477	84%	61%
2008	681	0	681	580	452	85%	66%
2007	769	2	767	627	485	82%	63%

Exclusions are students who died or became permanently disabled or who left school to serve in the armed forces, a foreign aid service of the Federal Government or on an official church mission.

Fall First-Time, Full-Time Bachelor's Seeking Retention Rates



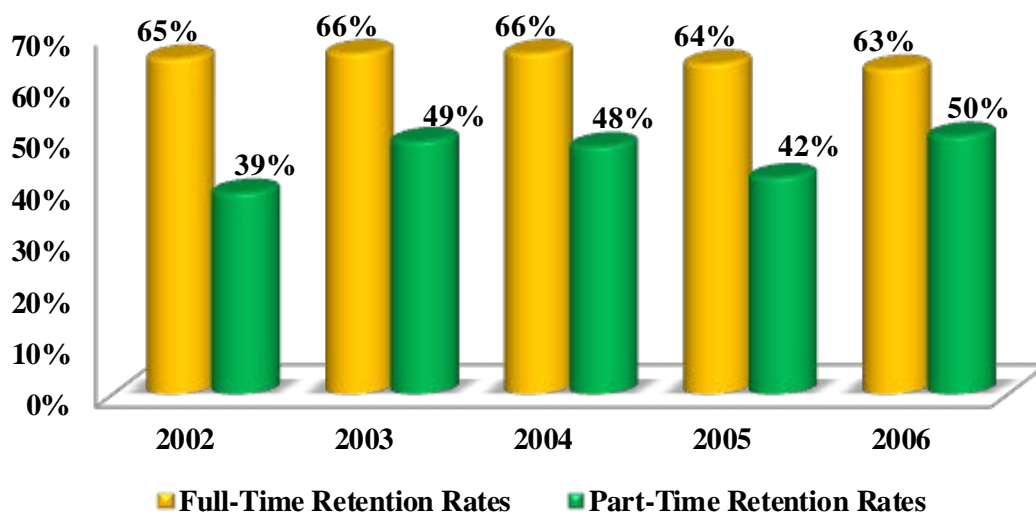
Sources: IPEDS Fall Enrollment Surveys

Fall First-Time Transfer Student Retention Rates

Overall First-Time, Full-Time Transfer Student Retention Rates					
	Cohort Year				
	2007	2008	2009	2010	2011
First-time, Full-time Transfer Retention Rates	65%	66%	66%	64%	63%
Number of students in the Adjusted Cohort	368	378	432	487	459
Number of cohort still enrolled in subsequent fall	239	248	283	313	291
Overall First-Time, Part-Time Transfer Student Retention Rates					
	Cohort Year				
	2007	2008	2009	2010	2011
First-time, Part-time Transfer Retention Rates	39%	49%	48%	42%	50%
Number of students in the Adjusted Cohort	147	162	157	117	117
Number of cohort still enrolled in subsequent fall	58	80	75	49	58

■ Returning Spring Retention Rate
 ■ Returning Fall Retention Rate

Fall First-Time Transfer Student Retention Rates



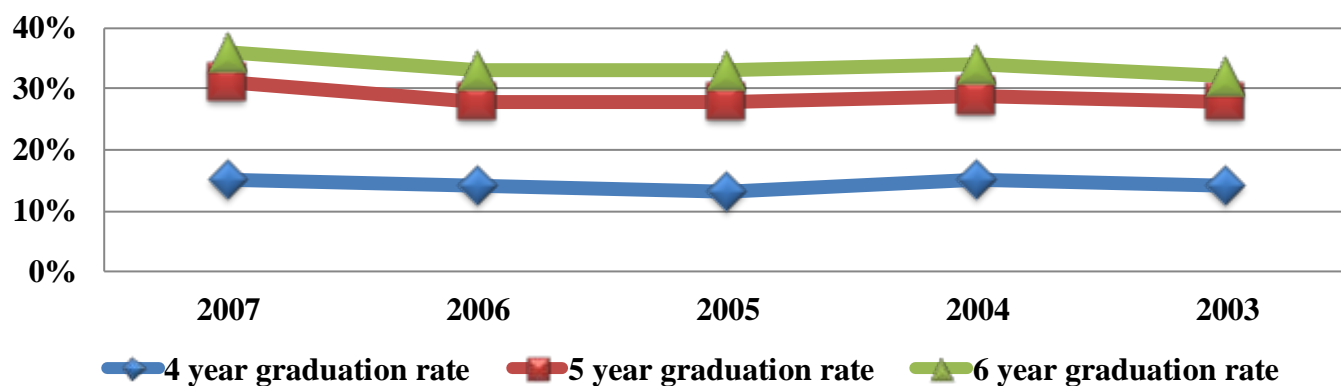
Sources: Census data

Fall First-Time, Full-Time Bachelor's Seeking Student Graduation Rates

Bachelor's Seeking Sub cohort Year	Bachelor's Seeking Sub cohort	Total Exclusions	Adjusted Sub cohort	Completed bachelor's degree in 4 or less years	Completed bachelor's degree in 5 or less years	Completed bachelor's degree in 6 or less years	4 year graduation rate	5 year graduation rate	6 year graduation rate
2007	738	3	735	110	228	265	15%	31%	36%
2006	787	3	784	106	218	259	14%	28%	33%
2005	792	3	789	106	221	260	13%	28%	33%
2004	656	1	655	97	189	220	15%	29%	34%
2003	528	0	528	76	148	169	14%	28%	32%
2002	564	2	562	79	150	177	14%	27%	31%
2001	730	4	726	117	200	236	16%	28%	28%
2000	734	0	734	128	234	256	17%	32%	35%
1999	755	4	751	103	215	242	14%	29%	32%
1998	802	0	802	95	212	243	12%	26%	30%
1997	645	1	644	61	160	194	10%	25%	30%
1996	660	0	660	77	178	220	12%	27%	33%
1995	663	2	661	77	179	217	12%	27%	33%

Exclusions are students who died or became permanently disabled or who left school to serve in the armed forces, a foreign aid service of the Federal Government or on an official church mission.

Fall First-Time, Full-Time Bachelor's Seeking Student Graduation Rates



Sources: IPEDS Graduation Rate Surveys

Faculty and Staff



Faculty Profile

	2009-2010		2010-2011		2011-2012		2012-2013		2013-2014	
Faculty										
Full Time	208	71%	207	66%	206	67%	196	63%	197	64%
Part Time	87	29%	105	34%	100	33%	117	37%	113	36%
Total	295	100%	312	100%	306	100%	313	100%	310	100%
Academic Rank (FT)										
Professor	69	33%	71	34%	70	34%	71	36%	72	37%
Assoc. Professor	50	24%	45	22%	43	21%	42	21%	45	23%
Asst. Professor	65	31%	68	33%	71	34%	65	33%	64	32%
Instructor	24	12%	23	11%	22	11%	18	9%	16	8%
Total	208	100%	207	100%	206	100%	196	100%	197	100%
Gender										
Male	169	57%	180	58%	163	53%	164	52%	162	52%
Female	126	43%	132	42%	143	47%	149	48%	148	48%
Total	295	100%	312	100%	306	100%	313	100%	310	100%
Highest Degrees (FT)										
Doctorate (or Equivalent)	120	58%	132	64%	126	61%	120	61%	123	62%
Masters	79	38%	65	31%	68	33%	67	34%	65	33%
Bachelor's	8	4%	10	5%	12	6%	9	5%	9	5%
Associate's	1	0%								
Total	208	100%	207	100%	206	100%	196	100%	197	100%
Tenure Status (FT)										
Tenured	125	60%	127	61%	124	60%	122	62%	122	62%
Tenure-Track	34	16%	27	13%	20	10%	18	9%	15	8%
Non-Tenure-Track	49	24%	53	26%	62	30%	56	29%	60	30%
Total	208	100%	207	100%	206	99%	196	94%	197	95%
Race/Ethnicity										
International	4	1%	4	1%	4	1%	4	1%	7	2%
Hispanic/Latino	6	2%	6	2%	5	2%	7	2%	7	2%
American Indian or Alaska Native	5	2%	6	2%	6	2%	8	3%	10	3%
Asian	4	1%	3	1%	3	1%	3	1%	4	1%
Black or African American	6	2%	5	2%	5	2%	4	1%	6	2%
White	270	92%	287	92%	282	92%	286	91%	272	88%
Race and ethnicity unknown	0	0%	1	0%	1	0%	1	0%	4	1%
Total	295	100%	312	100%	306	100%	313	100%	310	100%

Source: IPEDS Human Resources and Common Data Set

Excludes adjunct faculty with a part-time/overload contracts for student teaching supervision, clinical supervision, internships & music lessons.

Full-Time Faculty by Rank and Gender, Fall 2013

Home Organizations	Professor		Associate		Assistant		Instructor	
	Male	Female	Male	Female	Male	Female	Male	Female
Accounting	3					1		1
Art General			2	2	1	1		
Biology-Environmental Health	4	3	2	1	3	4		
Chemical and Physical Science	4	1		1	4			
Communication General			2			5		
Computer Aided Drafting & Design			1					
Computer Information Science	4		2					
Criminal Justice		1	4		1		1	
Dental Hygiene						4		5
EMT Paramedic							1	
Engineering Technology				1	1	1		
English and Philosophy	6	4	2			1		
Finance and Economics	2		1		1			
Foreign Language	2	1	1			3		
International English Program					1	2		
Kinesiology		1	1	1		3		
Management	2	2	2	1			2	1
Marketing	1		1		1			1
Mathematics	5	2	1		1			1
Men's Baseball							1	
Men's Basketball					1			
Music	4	1		1	3	2		
Nursing		1		3		7		
Psychology	2	2	1	1		2		
Radiology			1					
Social Science	5	1	2	1	3	1		
Student Success Center	1							
Teacher Education	2	4	1	3		3		1
Theatre		1	2		1	1		
Women's Softball							1	
Women's Track and Cross Country						1		
Grand Total	47	25	29	16	22	42	6	10

Sources: IPEDS Human Resources Survey

Full-Time Faculty by Highest Degree and Gender, Fall 2013

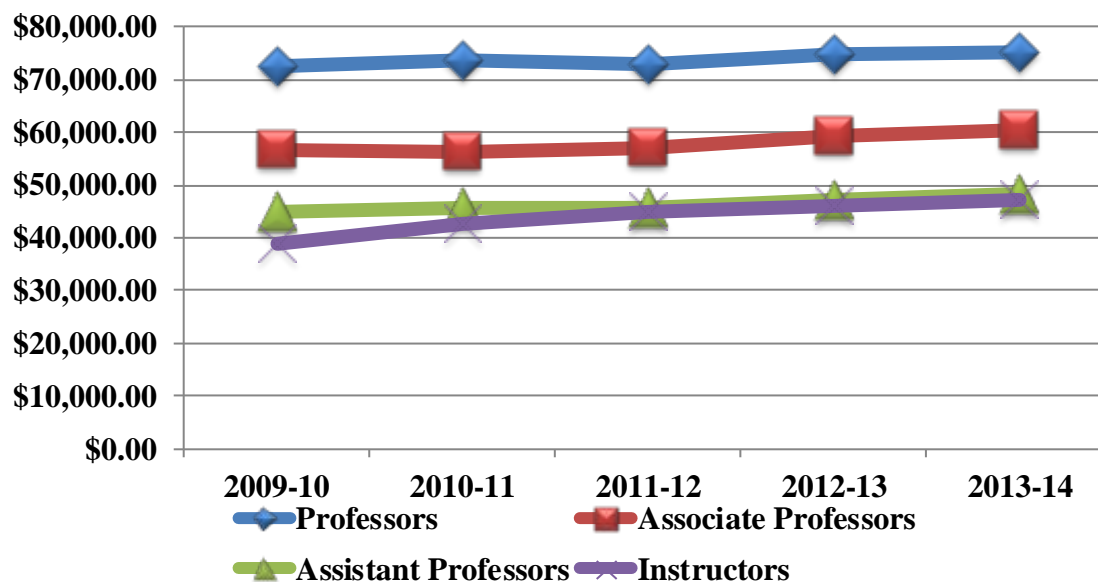
Home Organization	Doctorate and Terminal		Masters		Bachelors		Total	
	Male	Female	Male	Female	Male	Female	Male	Female
Accounting	3			2			3	2
Art General			3	3			3	3
Biology-Environmental Health	7	8	2				9	8
Chemical and Physical Science	7	2	1				8	2
Communication General		1	2	4			2	5
Computer Aided Drafting & Design	1						1	0
Computer Information Science	2		4				6	0
Criminal Justice	3	1	2		1		6	1
Dental Hygiene		1		1		7	0	9
EMT Paramedic					1		1	0
Engineering Technology		1	1	1			1	2
English and Philosophy	6	5	2				8	5
Finance and Economics		4					0	4
Foreign Language	3	2		2			3	4
International English Program			1	2			1	2
Kinesiology		3	1	2			1	5
Management	3	3	3	1			6	4
Marketing	2		1	1			3	1
Mathematics	6	2	1	1			7	3
Men's Baseball			1				1	0
Men's Basketball			1				1	0
Music	6	3	1	1			7	4
Nursing		3		8			0	11
Psychology	3	4		1			3	5
Radiology			1				1	0
Social Science	10	3					10	3
Student Success Center	1						1	0
Teacher Education	3	10		1			3	11
Theatre	1		2	2			3	2
Women's Softball			1				1	0
Women's Track and Cross Country				1			0	1
Total	67	56	31	34	2	7	100	97

Sources: IPEDS Human Resources Surveys

Average Full-Time Faculty Salary by Rank

Academic Rank	2009-10	2010-11	2011-12	2012-13	2013-14
Professors	\$72,741.62	\$73,699.30	\$72,886.09	\$74,999.91	\$75,315.03
Associate Professors	\$56,745.56	\$56,267.64	\$57,013.70	\$59,491.30	\$60,397.21
Assistant Professors	\$45,059.18	\$45,545.31	\$45,820.06	\$47,344.29	\$48,282.60
Instructors	\$38,820.75	\$42,779.27	\$44,906.23	\$46,081.02	\$47,098.29

Average Full-Time Faculty Salary by Rank



Sources: AAUP Surveys

Faculty/Staff by Gender and Race/Ethnicity as of November 1

Ethnicity/Race	2009	2010	2011	2012	2013
Male, Full-Time					
International	2	1	1	0	2
Hispanic/Latino	8	6	6	6	6
American Indian or Alaska Native	6	5	4	3	2
Asian	2	2	2	2	2
Black or African American	5	8	6	5	10
Native Hawaiian or Other Pacific Islander	0	0	0	0	0
White	239	245	241	233	226
Two or more races	0	0	0	0	1
Race and ethnicity unknown	0	0	1	1	2
Male, Full-Time Total	262	267	261	250	251
Female, Full-Time					
International	2	1	3	4	3
Hispanic/Latino	3	2	3	3	3
American Indian or Alaska Native	4	4	4	5	6
Asian	0	0	0	0	0
Black or African American	6	6	5	5	6
Native Hawaiian or Other Pacific Islander	0	0	0	0	0
White	229	240	234	252	245
Two or more races	0	0	0	0	0
Race and ethnicity unknown	0	0	0	0	0
Female, Full-Time Total	244	253	249	269	263
Full-Time Total	506	520	510	519	514
Male, Part-Time					
International	0	0	0	1	1
Hispanic/Latino	2	2	2	2	3
American Indian or Alaska Native	2	1	1	3	4
Asian	1	1	1	1	1
Black or African American	1	0	0	1	0
Native Hawaiian or Other Pacific Islander	0	0	0	0	0
White	48	59	53	60	53
Two or more races	0	0	0	0	0
Race and ethnicity unknown	0	1	0	0	1
Male, Part-Time Total	54	64	57	68	63
Female, Part-Time					
International	1	2	0	0	2
Hispanic/Latino	2	3	2	4	3
American Indian or Alaska Native	0	1	1	0	1
Asian	2	1	1	0	1
Black or African American	1	1	0	1	1
Native Hawaiian or Other Pacific Islander	0	0	0	0	0
White	69	71	74	87	73
Two or more races	0	0	0	0	0
Race and ethnicity unknown	0	0	0	0	1
Female, Part-Time Total	75	79	78	92	82
Part-Time Total	129	143	135	160	145
Grand Total	635	663	645	679	659

Source: IPEDS Human Resources and Common Data Set

Excludes adjunct faculty with a part-time/overload contracts for student teaching supervision, clinical supervision, internships & music lessons. It also excludes contract staff, seasonal staff, seminar instructors, undergraduate students, work-study students and personnel being paid by another entity.

Teaching and Learning



Number of Fall Class Sections with Undergraduates Enrolled

Undergraduate Class Size						
CLASS SECTIONS	2-9	10-19	20-29	30-39	40+	Total
2010	143	270	319	108	21	861
2011	136	302	276	131	11	856
2012	137	286	217	106	21	767
2013	122	281	226	171	19	819
<p>Class Sections: A class section is an organized course offered for credit, identified by discipline and number, meeting at a stated time or times in a classroom or similar setting, and not a subsection such as a laboratory or discussion session. Undergraduate class sections are defined as any sections in which at least one degree-seeking undergraduate student is enrolled for credit. Exclude distance learning classes and noncredit classes and individual instruction such as dissertation or thesis research, music instruction, or one-to-one readings. Exclude students in independent study, co-operative programs, internships, foreign language taped tutor sessions, practicums, and all students in one-on-one classes. Each class section should be counted only once and should not be duplicated because of course catalog cross-listings.</p>						
CLASS SUB-SECTIONS	2-9	10-19	20+			Total
2010	5	3	1			9
2011	9	2	1			12
2012	4	2	1			7
2013	6	2	1			9
<p>Class Subsections: A class subsection includes any subsection of a course, such as laboratory, recitation, and discussion subsections that are supplementary in nature and are scheduled to meet separately from the lecture portion of the course. Undergraduate subsections are defined as any subsections of courses in which degree-seeking undergraduate students enrolled for credit. As above, exclude noncredit classes and individual instruction such as dissertation or thesis research, music instruction, or one-to-one readings. Each class subsection should be counted only once and should not be duplicated because of cross-listings.</p>						

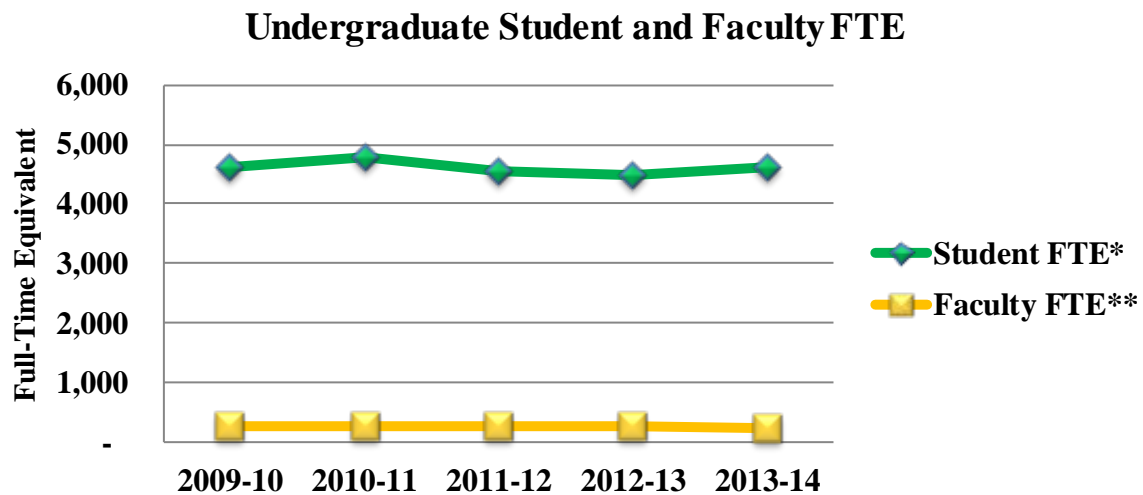
Sources: Common Data Set

Undergraduate Student To Faculty Ratio

Year	Student FTE*	Faculty FTE**	Student/Faculty Ratio
2009-10	4,620	248	19 to 1
2010-11	4,772	248	19 to 1
2011-12	4,533	254	18 to 1
2012-13	4,465	247	18 to 1
2013-14	4,623	245	19 to 1

* Student FTE is calculated by adding full-time undergraduate students plus part-time undergraduate students times .33

**Faculty FTE is calculated by adding full-time faculty plus (part-time instructional staff + administrators and other staff teaching credit courses times .33)



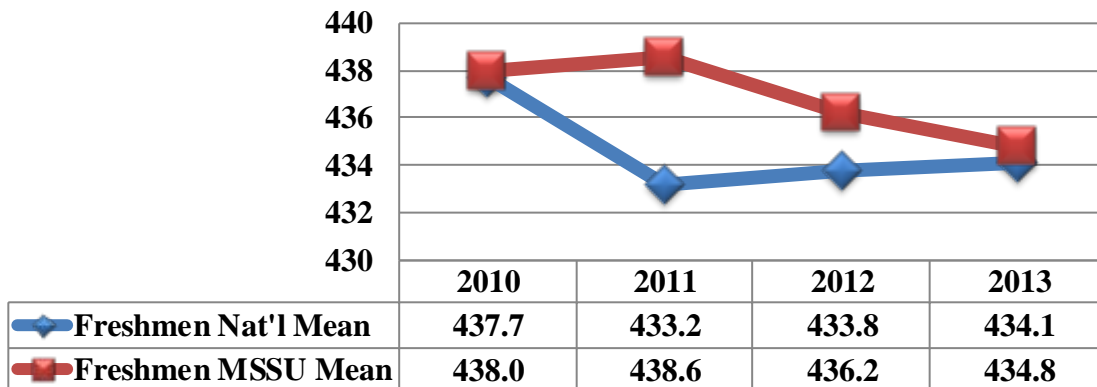
Sources: IPEDS Fall Enrollment Surveys

Student Classification by Semester, Courses Taken and Course Credit Hours

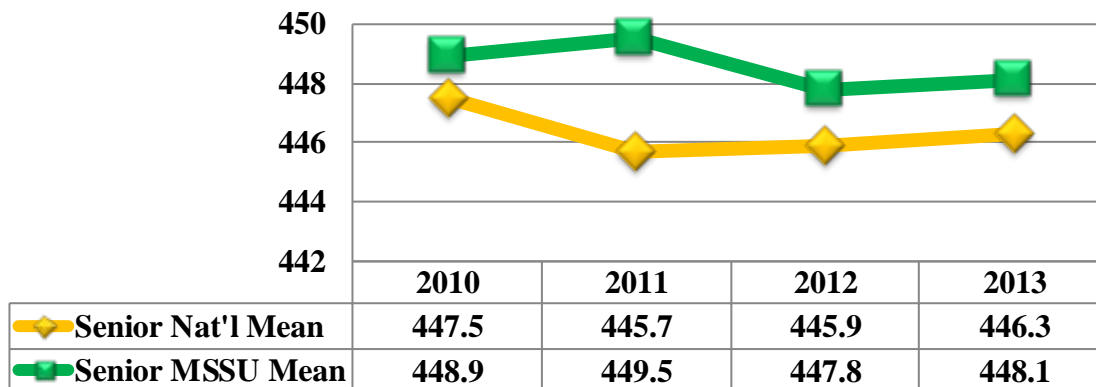
Student Classification	Number of Students	Total Courses Taken	Total Course Credit Hours	Number of Students	Total Courses Taken	Total Course Credit Hours	Number of Students	Total Courses Taken	Total Course Credit Hours
	Fall 2011			Fall 2012			Fall 2013		
Special ND Status	394	613	1,806	373	607	1,875	455	796	2,407
Freshman	1,558	6,660	19,792	1,476	6,385	18,946	1,497	6,379	19,337
Sophomore	981	4,020	12,025	961	4,026	12,218	950	3,929	11,928
Junior	1,053	4,401	13,233	1,031	4,382	13,030	1,117	4,694	13,971
Senior	1,415	5,659	17,172	1,388	5,608	16,965	1,395	5,539	16,746
Post Grad/UG Deg Seek	135	309	1,080	122	315	1,070	173	436	1,442
Graduate/Masters	55	69	206	66	86	255	29	44	131
Total	5,591	21,731	65,314	5,417	21,409	64,359	5,616	21,817	65,962
	Spring 2012			Spring 2013			Spring 2014		
Special ND Status	257	383	1,054	298	517	1,491	331	560	1,596
Freshman	1,165	4,759	14,361	1,095	4,617	13,972	1,085	4,528	13,730
Sophomore	967	4,040	11,983	964	3,907	12,018	901	3,781	11,558
Junior	1,020	4,288	12,563	1,048	4,445	13,060	1,091	4,576	13,698
Senior	1,511	6,146	18,615	1,443	5,774	17,449	1,488	6,023	17,958
Post Grad/ UG Deg Seek	116	280	1,006	136	361	1,220	134	351	1,174
Graduate/Masters	61	92	328	68	98	392	42	62	284
Total	5,097	19,988	59,910	5,052	19,719	59,602	5,072	19,881	59,998
	Summer 2011			Summer 2012			Summer 2013		
Special ND Status	112	151	412	96	122	332	152	226	542
Freshman	260	472	1,451	228	394	1,171	216	386	1,141
Sophomore	277	465	1,553	244	393	1,254	269	423	1,373
Junior	364	671	2,118	349	614	1,877	380	680	2,114
Senior	738	1,356	4,140	697	1,259	3,839	694	1,221	3,732
Post Grad/ UG Deg Seek	55	83	247	50	70	218	65	89	301
Graduate/Masters	77	116	414	70	87	368	36	41	135
Total	1,883	3,314	10,335	1,734	2,939	9,059	1,812	3,066	9,338

Sources: Census data

Freshmen ETS Proficiency Profile Mean Total Score Comparison by Year



Senior ETS Proficiency Profile Mean Total Score Comparison by Year

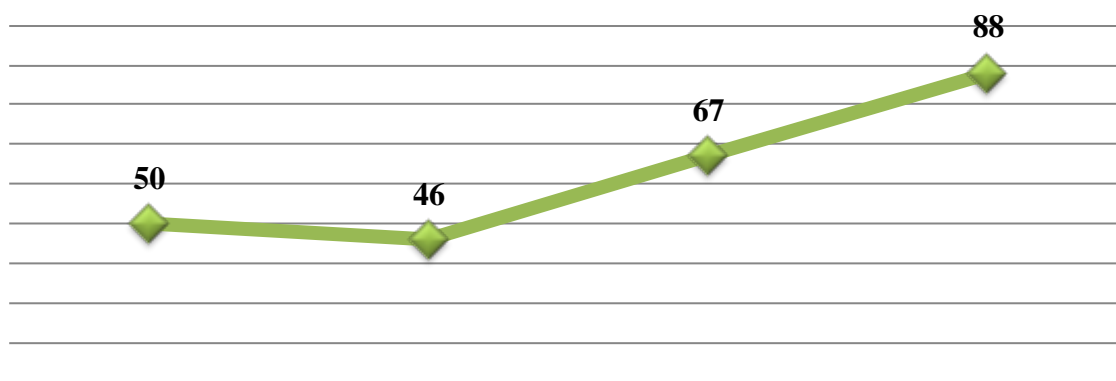


Sources: Educational Testing Service (ETS)

Top Ten Employers of 2011-2012 MSSU Graduates

Employer
Freeman Health System
Joplin Schools
Mercy Hospital
Ozark Center
Missouri Department of Social Services
Jack Henry & Associates, Inc.
Leggett & Platt, Inc.
Missouri Southern State University
Walmart
Carthage R-IX School District
Self-Employment
Webb City R-VII School District

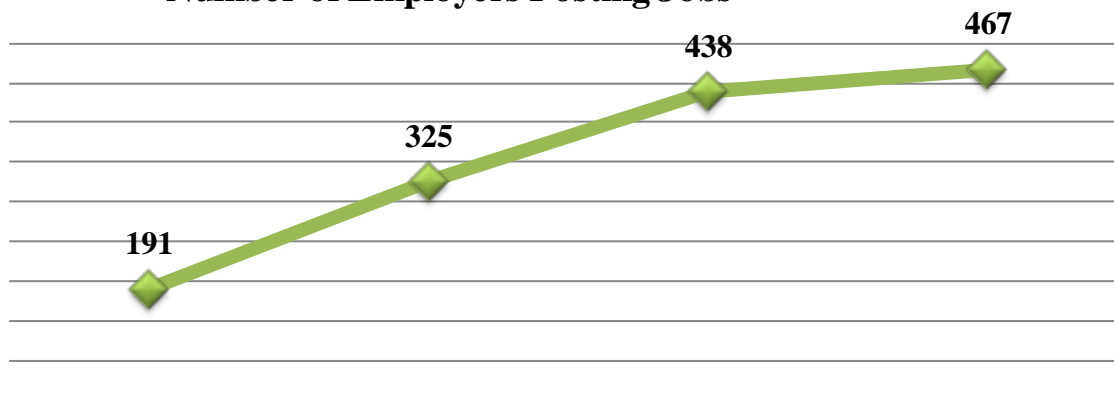
Spring Career Fair Employer Attendance



	2009-2010	2010-2011	2011-2012	2012-2013
Headcount	50	46	67	88

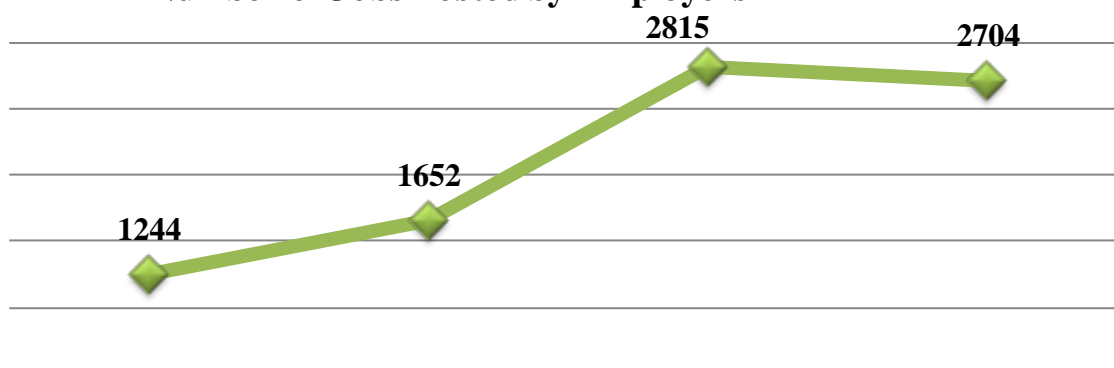
Sources: Career Services

Number of Employers Posting Jobs



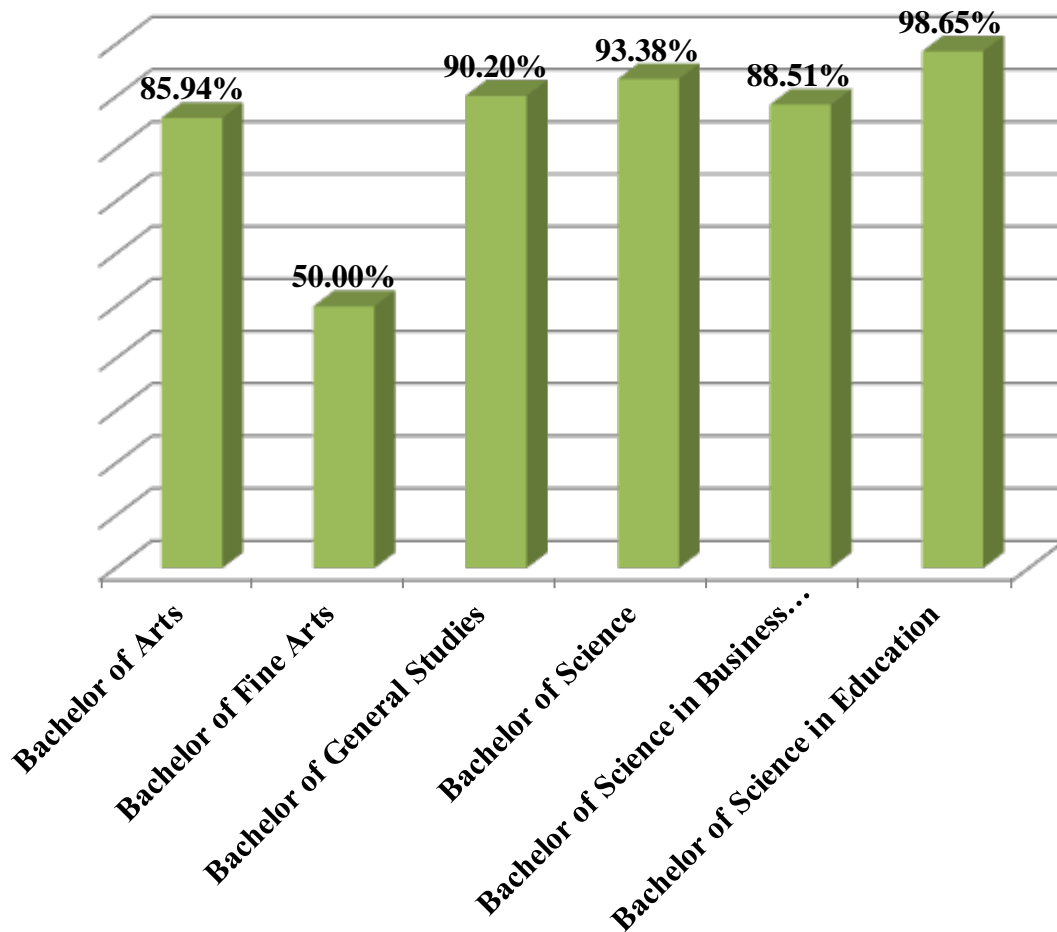
	2009-2010	2010-2011	2011-2012	2012-2013
◆ Headcount	191	325	438	467

Number of Jobs Posted by Employers

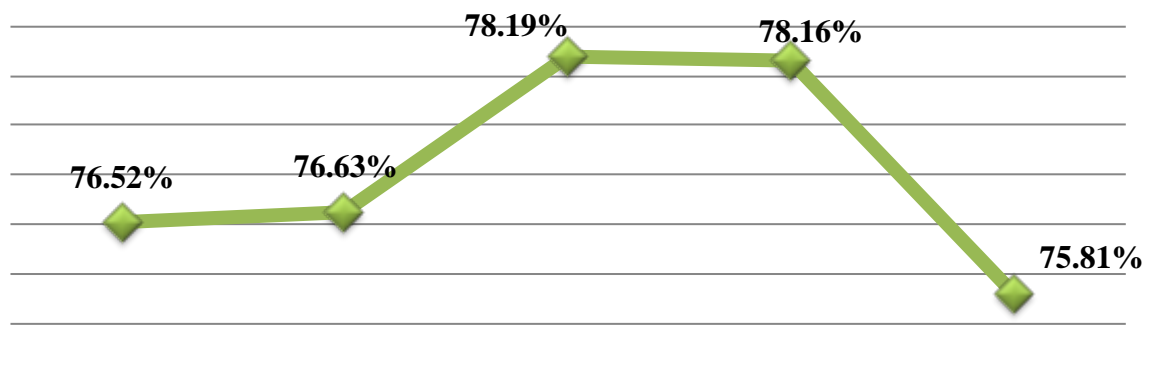


	2009-2010	2010-2011	2011-2012	2012-2013
◆ Headcount	1244	1652	2815	2704

Graduates Employed or Continuing Education by Degree, 2011-2012

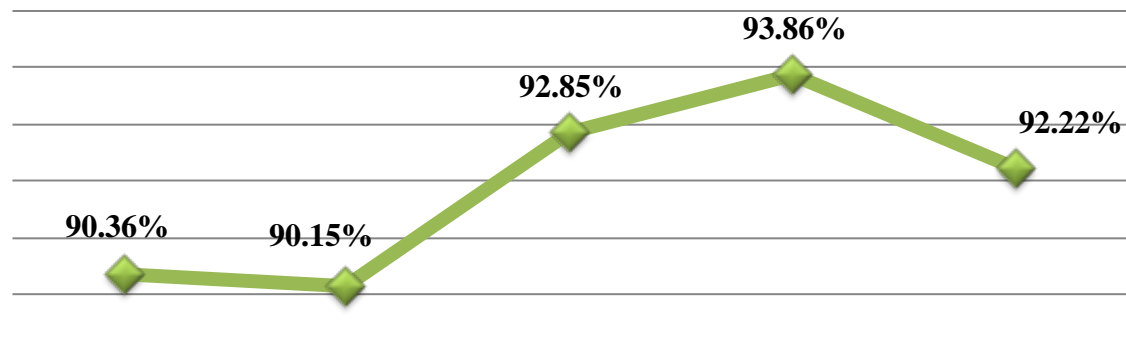


Graduates Employed by Year



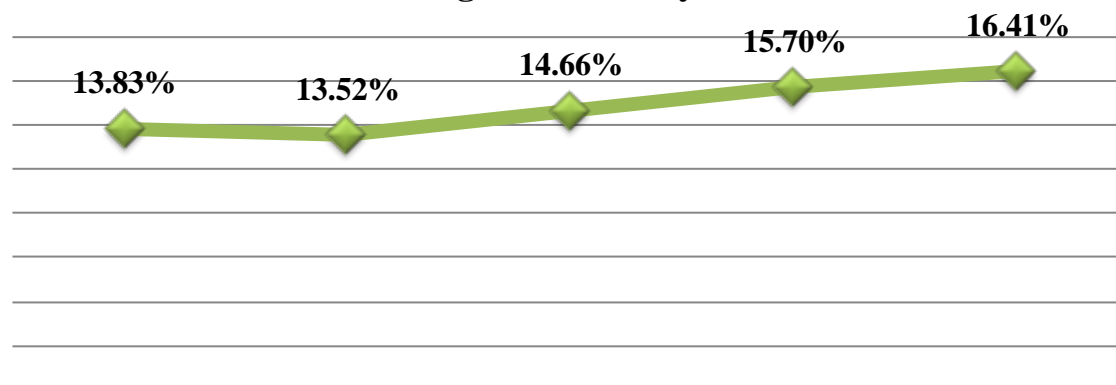
	2007-2008	2008-2009	2009-2010	2010-2011	2011-2012
Percentage	76.52%	76.63%	78.19%	78.16%	75.81%

Graduates Employed or Continuing Education by Year




	2007-2008	2008-2009	2009-2010	2010-2011	2011-2012
Percentage	90.36%	90.15%	92.85%	93.86%	92.22%

Graduates Continuing Education by Year




	2007-2008	2008-2009	2009-2010	2010-2011	2011-2012
Percentage	13.83%	13.52%	14.66%	15.70%	16.41%

University Financial Resources

A portrait of Celeste Serrano, a sociology major from Bentonville, Arkansas. She is a young woman with dark hair, smiling, and holding a red book.

LION PRIDE TUITION

A yellow circular badge with a black border. The text inside reads "NOW ^{all 10} AR, KS, OK & ^{more} IL".

MSSU is open and inviting,
and the faculty are
genuine and supportive.
So worth the commute.

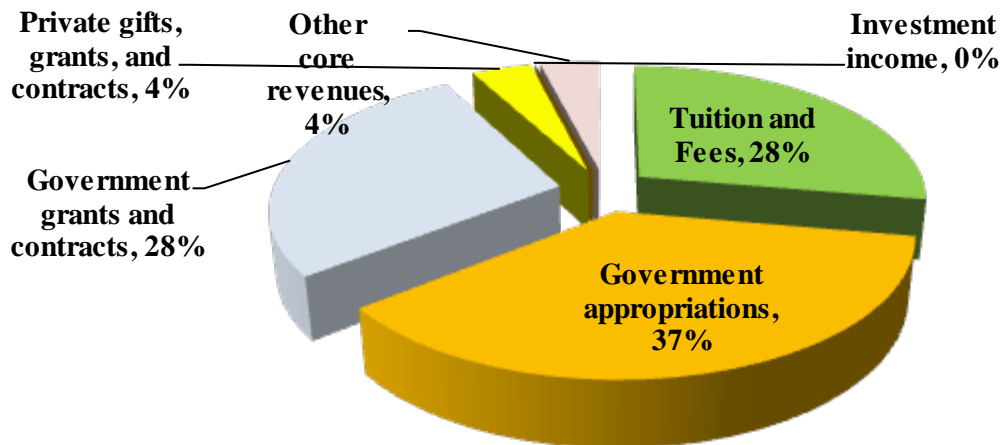
CELESTE SERRANO, SOCIOLOGY MAJOR
BENTONVILLE, ARKANSAS

Sources of Core Revenues, FY 2013

Revenue Source	Reported Values	Percent of total core revenues	Core revenues per FTE enrollment
Tuition and Fees	\$16,582,114	28%	\$3,721
Government appropriations	\$22,225,470	37%	\$4,988
Government grants and contracts	\$16,758,460	28%	\$3,761
Private gifts, grants, and contracts	\$2,199,603	4%	\$494
Investment income	\$109,598	0%	\$25
Other core revenues	\$2,227,305	4%	\$500
Total core revenues	\$60,102,550	100%	\$13,488
Total revenues	\$67,625,046		\$15,176

Core revenues include tuition and fees, government appropriations (federal, state, and local); government grants and contracts; private gifts, grants, and contracts; investment income; other operating and nonoperating sources; and other revenues and additions. Core revenues exclude revenues from auxiliary enterprises (e.g., bookstores, dormitories), hospitals, and independent operations.

Percent of Sources of Core Revenues, FY 2013



Sources: IPEDS Finance Surveys

Sources of Core Expenses, FY 2013

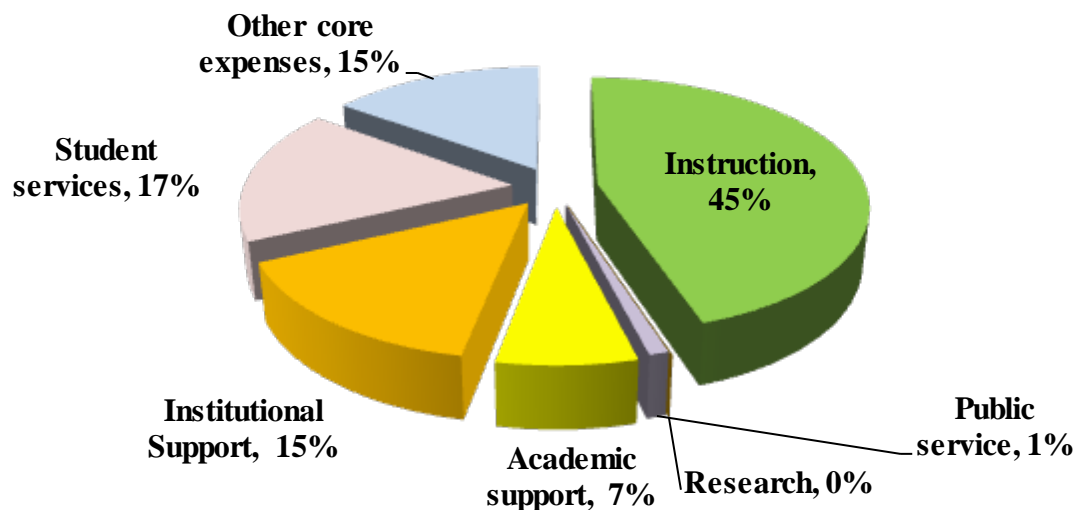
Expense Function	Reported Values	Percent of total core expenses	Core expenses per FTE enrollment
Instruction	\$25,927,252	45%	\$5,819
Research	\$0	0%	\$0
Public service	\$822,168	1%	\$185
Academic support	\$4,010,544	7%	\$900
Institutional Support	\$8,529,224	15%	\$1,914
Student services	\$9,929,058	17%	\$2,228
Other core expenses	\$8,709,638	15%	\$1,955
Total core expenses	\$57,927,884	100%	\$13,000

Total expenses	\$66,810,633		\$14,993
----------------	--------------	--	----------

Core expenses include expenses for instruction, research, public service, academic support, institutional support, student services, operation and maintenance of plant, depreciation, scholarships and fellowships expenses, other expenses, and nonoperating expenses.

Calculated value	
FTE enrollment	4,456
The full-time equivalent (FTE) enrollment used in this report is the sum of the institution's FTE undergraduate enrollment and FTE graduate enrollment (as calculated from or reported on the 12-month Enrollment). FTE is estimated using 12-month instructional activity (credit and/or contact hours). All doctor's degree students are reported as graduate students.	

Percent of Sources of Core Expenses, FY 2013

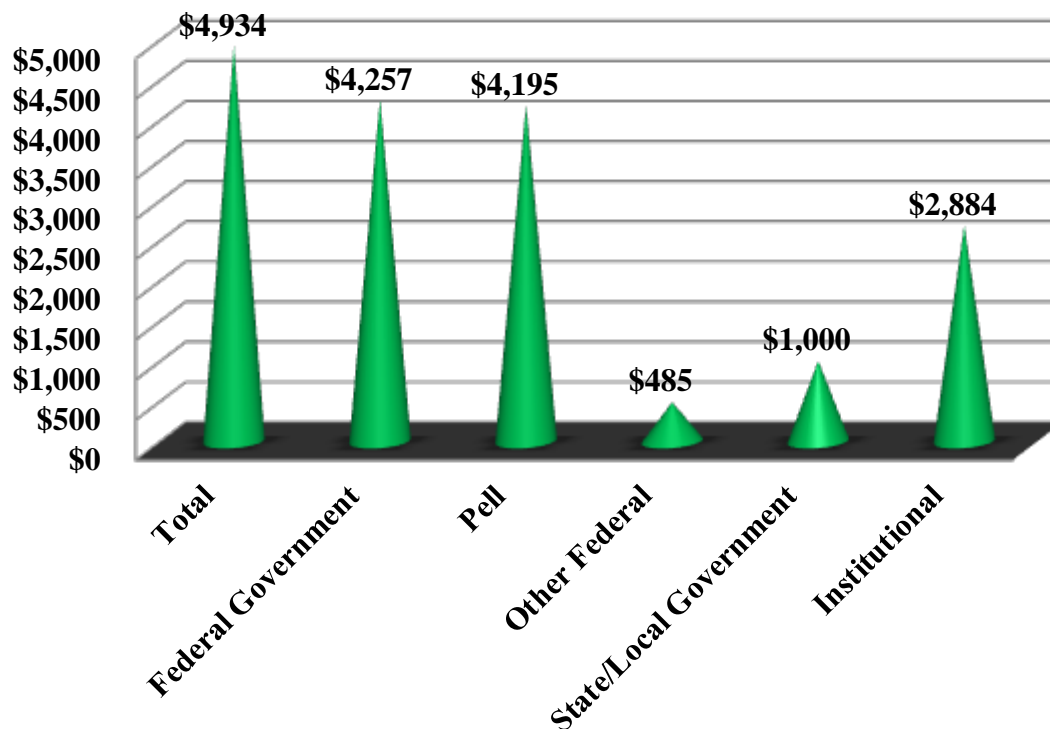


Sources: IPEDS Finance Surveys

Distribution of Financial Aid by Award Type 2012-13

Total grant aid received by all undergraduate students		\$18,984,494
Number of undergraduate students who received a Pell		3,247
Percentage of First-time, Full-time (FTFT) students receiving any financial aid		93%
	Percentage of FTFT students	Average amount of grant aid
Total	86%	\$4,934
Federal Government	56%	\$4,257
Pell	55%	\$4,195
Other Federal	8%	\$485
State/Local Government	38%	\$1,000
Institutional	55%	\$2,690

Average Amount of Financial Aid by Award Type 2012-13

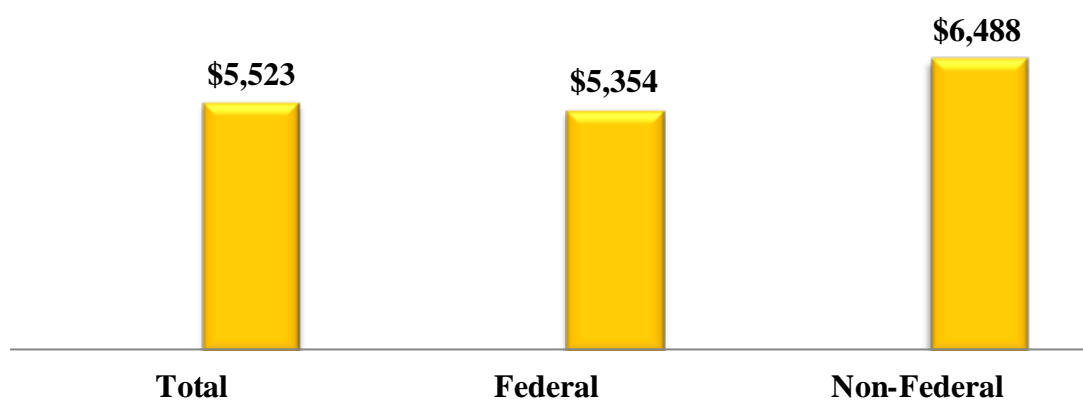


Sources: IPEDS Student Financial Aid Surveys

Distribution of Financial Aid by Loan Source, 2012-13

	Percentage of first-time, full-time students receiving loans by type	Average amount of loans received by type
Total	57%	\$5,523
Federal	57%	\$5,354
Non-Federal	1%	\$6,488

Average Amount of Financial Aid by Loan Source, 2012-13



Sources: IPEDS Student Financial Aid Surveys

Undergraduate Pricing Information

Estimated expenses for academic year for full-time, first-time students		2010-11	2011-12	2012-13	2013-14	2014-15
	In-district tuition and fees	\$4,530	\$5,090	\$5,271	\$5,376	\$5,416
	In-state tuition and fees	\$4,530	\$5,090	\$5,271	\$5,376	\$5,416
	Out-of-state tuition and fees	\$8,532	\$9,654	\$10,017	\$10,225	\$10,450
	Books and supplies	\$800	\$520	\$410	\$465	\$761
	On Campus Room and Board	\$5,500	\$5,976	\$6,113	\$6,265	\$6,299
	On Campus Other Expenses	\$3,150	\$3,062	\$3,148	\$3,264	\$3,289
	Off Campus Room and Board	\$7,000	\$5,612	\$5,541	\$5,611	\$6,358
	Off Campus Other Expenses	\$3,750	\$3,888	\$5,226	\$3,868	\$3,874
	Off Campus with family Other Expenses	\$3,750	\$3,888	\$5,225	\$3,868	\$3,874
Average undergraduate student tuition and fees for academic year 2014-15						
			Tuition		Fees	
	In-district		\$5,196		\$566	
	In-state		\$5,196		\$566	
	Out-of-state		\$10,590		\$566	

Sources: IPEDS Institutional Characteristics Surveys

Facilities



Intramural Championship 2012

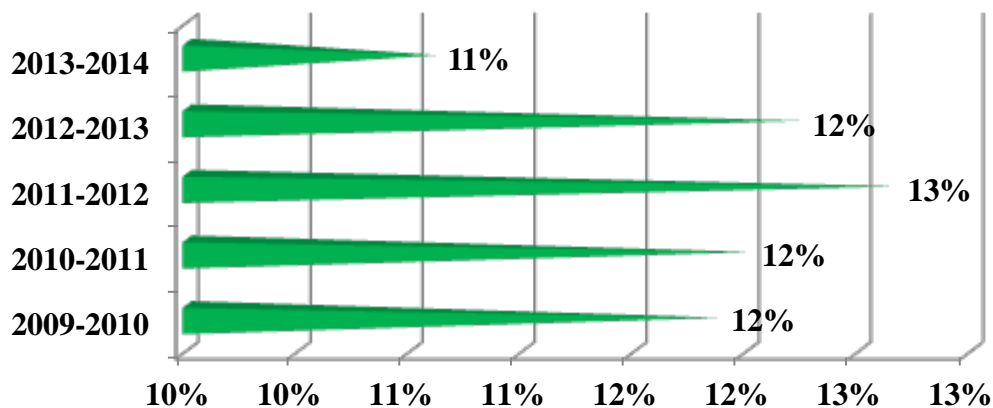


The trainers are legit!

Campus Housing Statistics

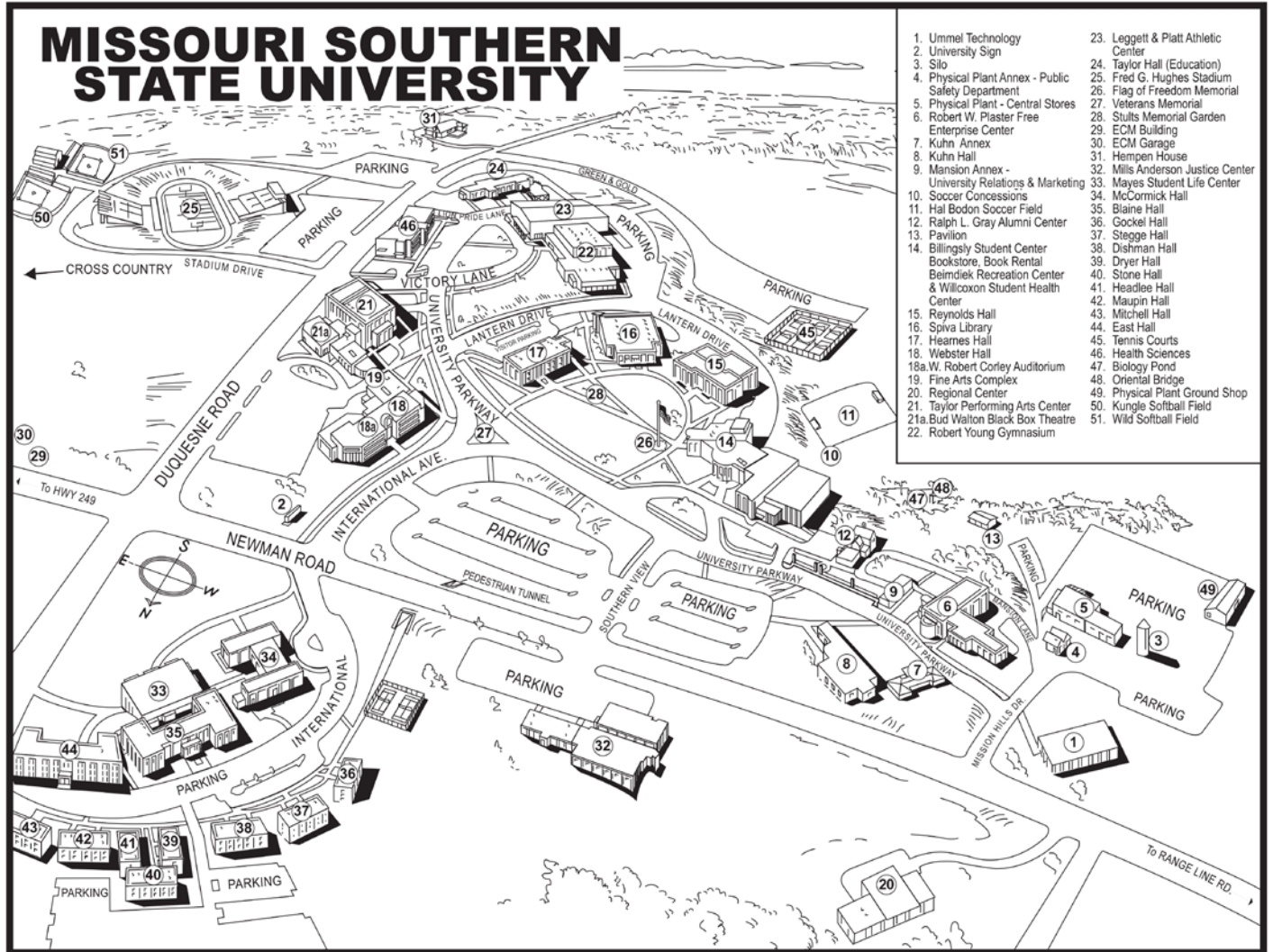
Year	Housing Capacity	Number Housed	Fall Enrollment	Percent Housed
2009-2010	710	677	5,701	12%
2010-2011	710	697	5,802	12%
2011-2012	715	708	5,591	13%
2012-2013	715	663	5,417	12%
2013-2014	715	596	5,616	11%

Percent in Campus Housing by Academic Year



Source: Residence Life and In-House Report

Campus Map



Campus Building Statistics

Year Built	Building Name	Gross Square Footage
1971	Anderson Public Safety Center *	78,062
1990	Backflow, Kuhn (Utility)	350
1991	Backflow, Tunnel (Utility)	350
1969	Billingsly Student Center **	128,114
1969	Blane Hall (Men's Dormitory)	34,200
1980	Chemical Storage	270
1980	Dishman Hall (Apartment C)	11,991
1980	Dryer Hall (Apartment D)	7,994
1940	E.C.M Bldg.	2,000
1950	E.C.M. Garage (Track Storage)	1,561
2001	East Hall (Residence Hall)	59,100
1967	Fine Arts Complex	59,028
1930	Fire Safety/Custodial Warehouse	2,255
1980	Gockel Hall (Apartment A)	7,994
1997	Grounds Shop	5,400
1980	Headlee Hall (Apartment E)	7,994
2010	Health Sciences Bldg.	83,545
1967	Hearnes Hall (Administration)	40,500
1970	Hempen House (Includes out-bldgs.)	4,000
1976	Hughes Stadium	
1990	ITFS Tower - Monett (Radio Tower)	
1963	Kuhn Annex (English)	2,520
1969	Kuhn Hall (English)	14,652
1986	KXMA Radio Tower & Transmitter Bldg.	
1999	Leggett & Platt Athletic Center	85,321
1981	Mansion Annex	2,611
1987	Maupin Hall (Apartment F)	7,994
1996	Mayes Student Life Center	30,675
1969	McCormick Hall (Women's Dormitory)	20,808
1987	Mitchell Hall (Apartment G)	8,277
1987	MSTV Tower & Transmitter Bldg.	
1967	Physical Plant & Greenhouse	17,169
2007	Physical Plant Warehouse	5,038
1980	Plaster Hall (Bus/Computer Science)	75,550
1930	Police Department	875
1928	Ralph L. Gray Alumni Center (Mansion)	8,700
1967	Reynolds Hall (Science & Math)	62,876
2002	Soccer Storage/Concessions Bldg.	440
1997	Softball Concessions Bldg.	1,521
1967	Spiva Library	100,181
1980	Stegge Hall (Apartment B)	11,991
1990	Stone Hall (Apartment H)	7,994
1975	Taylor Performing Arts Center	46,791
1977	Taylor Hall (Education)	31,205
1970	Ummel Technology	23,779
1992	Webster Hall (Social Science/Comm)	69,090
1968	Young Gymnasium/Multipurpose Bldg.	58,716
	TOTALS	1,229,482

* Includes Criminal Justice, Franklin Tech, MOCAP, & Learning Center

** Includes Conference Center, Rec Center, & Biemdek Health Center

Sources: Physical Plant Office

Library



Library Services, Collections & Personnel FY 2012-2013

Collections (Total):

Books	197,841
Government Documents	98,007
Bound Periodicals	10,993
Newspaper & Periodical Subscriptions	47,049
Microforms	783,369
Audio-Visuals	6,545
Ebooks	229,994
Internet Access Databases	76

Collections Added

Books	1,693
Government Documents	1,861
Bound Periodicals	-
Newspaper & Periodical Subscriptions	6
Microforms	1,192
Audio-Visuals	130
Internet Access Databases	2

Services:

Total Check Outs	12,840
Reference Transactions	6,960
Tours & Group Presentations	101

InterLibrary Loans:

Traditional Items Borrowed	185
Traditional Items Loaned	53
MOBIUS Books Borrowed	1,416
MOBIUS Books Loaned	2,448

Personnel:

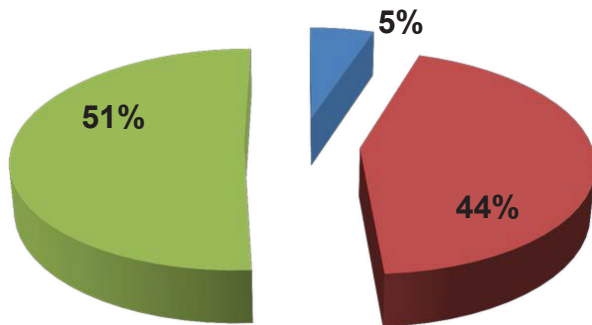
Library Faculty	7
FT Support Staff	7
PT Support Staff	10
PT Student-Workers	22

Sources: Spiva Library

Foundation

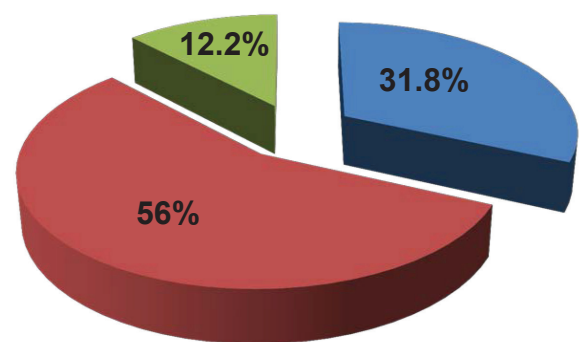


MISSOURI SOUTHERN FOUNDATION 2013 FINANCIAL REPORT



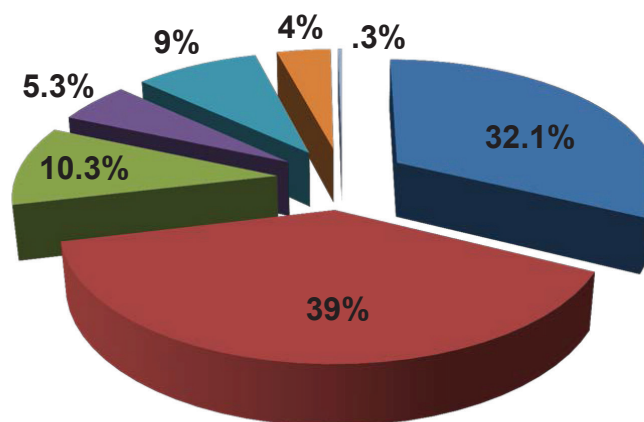
NET ASSETS

Unrestricted	\$1,641,518
Temporarily Restricted.....	\$14,038,777
Permanently Restricted	\$16,298,234
Total Net Assets	\$31,978,529



REVENUE

Contributions	\$1,052,033
Investment Income	\$1,847,489
Beneficial Interest in Trust.....	\$403,017
Total Revenue	\$3,312,539



EXPENSES

Scholarships	\$635,610
Faculty & Department Support.....	\$768,297
Facilities Improvement.....	\$203,005
General University Support.....	\$104,663
Administration	\$176,236
Fundraising	\$76,635
Cultural Activities	\$5,448
Total Expenses	\$1,969,894

The audit of the financial statements for the year ending June 30, 2013 was conducted in accordance with generally accepted auditing standards and has been approved by the Budget and Audit Committee of the Missouri Southern Foundation Board.

Athletics



Athletics

GO LIONS!



The MSSU Lions compete in 12 different men's and women's sports in the highly competitive Mid-America Intercollegiate Athletics Association. This is an athletic department with history and promise.

Men's: Football, Basketball, Baseball, Golf, Cross Country, Indoor/Outdoor Track

Women's: Basketball, Softball, Soccer, Cross Country, Indoor/Outdoor Track, Volleyball

As of the 2012 Fall Semester, the Missouri Southern Athletic Department had 325 student-athletes on 14 team rosters. Of those athletes, 148 of them had a 3.0 GPA or higher, 62 had a 3.5 GPA or higher and 11 had a perfect 4.0 GPA.

During the 2012-13 season, Missouri Southern Athletics has produced:

148 MIAA Academic Honor Roll Members

13 MIAA Academic All-MIAA Members

11 MIAA Presidential Scholar Winners

45 All-MIAA Athletes

19 All-Region Athletes

9 All-Americans

10 Academic All-Americans

Brandon Williams

Drafted by the Baltimore Ravens,
Spring 2013

**MEN'S CROSS COUNTRY 2ND PLACE REGIONAL FINISH
and 8TH PLACE NATIONAL FINISH**

MIAA BASEBALL CHAMPIONS

**WOMEN'S CROSS COUNTRY
20TH PLACE NATIONAL FINISH**

**MIAA WOMEN'S
CROSS COUNTRY CHAMPIONS**

**TEN INDOOR TRACK AND FIELD
NATIONAL QUALIFIERS**

Learn more at

msslions.com



Baseball champs!



Women's Cross Country champs!

Glossary of Terms

25th percentile - The score at or below which 25 percent of students submitting test scores to an institution scored.

75th percentile - The score above which 25 percent of students submitting test scores to an institution scored.

Academic Rank - A status designated by the institution according to the institution's policies, such as Professor, Associate Professor, Assistant Professor and Instructor.

Academic Year - The period of time generally extending from September to June.

Accrediting Agencies - Agencies that establish operating standards for educational or professional institutions and programs, determine the extent to which the standards are met, and publicly announce their findings.

ACT - The ACT® college readiness assessment is a curriculum- and standards-based educational and career planning tool, which measures educational development and readiness to pursue college-level coursework in English, mathematics, natural science, and social studies.

Adjunct Instructional Staff - Non-tenure track instructional staff serving in a temporary or auxiliary capacity to teach specific courses on a course-by-course basis. This includes either instructional staff that are hired to teach an academic degree-credit course and those hired to teach a remedial, developmental, or ESL course; whether the latter three categories earn college credit is immaterial.

Adjusted Cohort – Students who are excluded from the original cohort (or sub cohort) due to any allowable exclusion.

Admissions (students admitted) - Applicants that have been granted an official offer to enroll in a postsecondary institution.

Applicant (students applied) - An individual who has fulfilled the institution's requirements to be considered for admission (including payment or waiving of the application fee, if any) and who has been notified of one of the following actions: admission, non-admission, placement on waiting list, or application withdrawn by applicant or institution.

Census Date - The Census Date of the university represents a date in each semester when a “snapshot” of university data is reported. Data reported at Census represent the official enrollment for the semester.

Certificate - A formal award certifying the satisfactory completion of a postsecondary education program.

Classification of Instructional Programs (CIP) - A six-digit code in the form xx.xxxx that identifies instructional program specialties within educational institutions.

Credit Hour - A unit of measure representing the equivalent of 15 class sessions consisting of 50 minutes of instruction. It is applied toward the total number of hours needed for completing the requirements of a degree, diploma, certificate, or other formal award.

Declared Major - Students who have declared their area of study and are enrolled in at least one course taken for credit anytime during the academic year. Students with a double major are counted in each area but only counted once in the college and university counts. Data are gathered each semester on Census Date.

Degree - An award conferred by a college, university, or other postsecondary education institution as official recognition for the successful completion of a program of study.

Degree/certificate-Seeking Students - Students enrolled in courses for credit and recognized by the institution as seeking a degree, certificate, or other formal award. High school students also enrolled in postsecondary courses for credit are not considered degree/certificate-seeking.

Exclusions - Those students who may be removed (deleted) from a cohort (or sub cohort). For the Graduation Rates and Fall Enrollment retention rate reporting, students may be removed from a cohort if they left the institution for one of the following reasons: death or total and permanent disability; service in the armed forces (including those called to active duty); service with a foreign aid service of the federal government, such as the Peace Corps; or service on official church missions.

Faculty - Persons whose specific assignments customarily are made for the purpose of conducting instruction, research, or public service as a principal activity (or activities), and who hold academic titles of professor, associate professor, assistant professor, instructor, lecturer, or the equivalent of any of these academic ranks.

Fall - The part of the academic year that begins between late August and November 1.

First-Time Student - Students who enroll in college for the first time. First-time students (FTST) are those who have earned no previous college credit hours, although those who earned college credits while in high school through dual credit are included as well as students who originally enter MSSU as non-degree seeking.

First-Time Student Retention Rate - The percent of first-time students who return for their sophomore year.

First-Time Transfer Student - Students who enroll at MSSU for the first time who have previously attended another postsecondary institution.

Fiscal Year (FY) - The period of time utilized for maintaining university financial records. It commences on July 1 and ends June 30 the following year.

Freshmen - Undergraduates who have earned fewer than 30 college semester credit hours.

Full-Time Equivalent (FTE) Staff - The full-time-equivalent (FTE) of staff is calculated by summing the total number of full-time staff from the Employees by Assigned Position (EAP) component and adding one-third of the total number of part-time staff.

Full-Time Equivalent (FTE) Graduate - All the credit hours taken by graduate students, divided by 12 per semester or 24 per academic year.

Full-Time Equivalent (FTE) Undergraduate - All the credit hours taken by undergraduate students, divided by 15 per semester or 30 per academic year.

Full-Time Instructional Faculty - Individuals are included or excluded based on the instructions for reporting to government agencies, i.e., IPEDS.

Full-Time Student - A full-time student is a student who takes at least 12 credit hours (undergraduate) or 9 credit hours (graduate) in a specific semester.

Geographic Origin – The place a student resides at the time of first application to the institution.

Graduate - A student who holds a bachelor's or first-professional degree, or equivalent, and is taking courses at the post- baccalaureate level.

Graduation Rate - The percent of first-time students who graduate within a given period of time.

Headcount - Refers to the unduplicated count of students enrolled for one or more classes during the time period stated.

Junior – This is an undergraduate student who has earned at least 60 but fewer than 90 semester credit hours.

Major - A concentration of related courses generally consisting of 30 to 50 semester hours of credit. A student may have more than one major.

Non-Degree Seeking - A student enrolled in courses for credit that is not recognized by the institution as seeking a degree or formal award.

Nonresident Alien - A person who is not a citizen or national of the United States and who is in this country on a visa or temporary basis and does not have the right to remain indefinitely.

Part-Time Student - An undergraduate student enrolled with fewer than 12 credits in a semester or a graduate student enrolled in nine credit hours or less.

Program Category - A summary of groups of related instructional programs designated by the first 2 digits of its appropriate Classification of Instructional Programs (CIP) code.

Race/Ethnicity - Categories used to describe groups to which individuals belong or identify with. A person may be counted in only one group.

Retention Rate - This is the percentage of first-time bachelor's degree-seeking undergraduates from the previous fall who are again enrolled in the current fall.

Senior - An undergraduate student who has accumulated at least 90 semester credit hours.

Sophomore - An undergraduate student who has accumulated at least 30 semester hours of credit, but fewer than 60 semester credit hours.

Summer - The part of the academic year that begins between late May and July.

Spring - The part of the academic year that begins between late January and March.

Student to Faculty Ratio – The ratio includes the total full-time equivalent (FTE) enrollment of students divided by the total full-time equivalent (FTE) of instructional faculty.

Sub cohort - A predefined subset of the initial cohort or the revised cohort established for tracking purposes on the Graduation Rates (GR) component of IPEDS (e.g., bachelor's degree-seeking sub cohort.)

Tenure - Status of a personnel position with respect to permanence of the position.

Tuition and fees - The amount of tuition and required fees covering a full academic year most frequently charged to students. These values represent what a typical student would be charged and may not be the same for all students at an institution. If tuition is charged on a per-credit-hour basis, the average fulltime credit hour load for an entire academic year is used to estimate average tuition. Required fees include all fixed sum charges that are required of such a large proportion of all students that the student who does not pay the charges is an exception.

Undergraduate - A student enrolled in a 4- or 5-year bachelor's degree program, an associate's degree program, or a vocational or technical program below the baccalaureate.