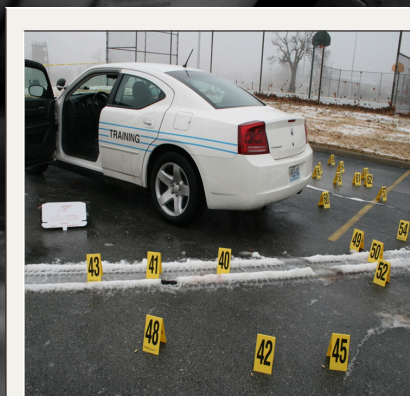




CSI PHOTOGRAPHY

July 16-18, 2025
8:30am-5pm
MSSU, Justice 125

Feel free to bring your own equipment.
MSSU will also have equipment
available to use during the course.



Cost:

\$200 for Contract Agencies
\$400 for Non-Contract Agencies



**Types of documentation,
photos & logging.**



**Assessing photography
problems.**



Photography orientation.



**Use of lighting (laser,
available & luminol).**

REGISTRATION

Online at: <https://www.mssu.edu/academics/arts-sciences/justice-studies/law-enforcement/ceu-training-dates.php>

