

MISSOURI SOUTHERN
STATE UNIVERSITY

BOARD OF
GOVERNORS

SEPT. 10, 2021 | REPORT



DR. DEAN VAN GALEN

PRESIDENT

WELCOME BACK, LIONS

The beginning of the fall semester is always an exciting time at the university, and campus was particularly vibrant this year with the return of face-to-face classes and some of the traditional welcome back activities. Here are a few highlights:



Move-in Day



Freshmen Convocation



Green Coat Ceremony



Global Leaders Welcome



First Day of the Semester



Community Day

JAPAN THEMED SEMESTER



A Missouri Southern tradition since 1997, this fall we focus on Japan as part of the themed semester program. A complete list of the over 30 events can be found at www.mssu.edu/japan, including MSSU Japan Day on Saturday, October 23. Activities will include interactive arts and culture events, opportunity to learn about Japanese traditions, and a Samurai sword performance by the university's own Erick Wolfe in Bud Walton Theatre. Guest will also enjoy grilled yakitori (skewered chicken), okonomiyaki (savory pancakes), and onigiri (rice balls).

GREEN AND GOLD TOUR



As a new way to reach out and connect Missouri Southern with communities in the region, this coming year MSSU will carry out up to six community-based events. Initial dates and locations include:

- Friday, October 8 Monett, Missouri
- Friday, October 22 Nevada, Missouri
- Tuesday, November 16 Seneca, Missouri

Branded as the Green and Gold Tour, the goal is to connect with alumni and community leaders, and to highlight to prospective students the wonderful opportunities at MSSU.

Activities will vary by community, but will include:

- Partnering with the Chamber of Commerce for morning coffee at a local establishment
- Distribute gift/information bags to MSSU graduates teaching in the local school district
- MSSU faculty presentations in high school classrooms (science, history, etc.)
- Lunch with area alumni, including emphasizing how they can help with student recruitment
- University sponsorship of a local high school sporting event, presenting a scholarship check to a student from the home and visiting schools at halftime.

We look forward to a series of great events!

"A ship in harbor is safe, but that is not what a ship is built for."
- John A. Shedd

DR. BRAD HODSON

EXECUTIVE VICE PRESIDENT

FY 2021 FUNDRAISING TOTALS

The Office of University Development completed a record fundraising year in 2020-2021 with \$5.13 million in total giving (cash, in-kind, planned) received. This is a 6% increase from the previous fiscal year. Cash increased from \$3.2 million in FY 2020 to \$4.4 million in FY 2021. The number of donors was down slightly with 1,330 individuals, corporations and foundations making gifts, but the average gift size was larger.

This increase in philanthropic investment in Missouri Southern is encouraging as the University and Foundation prepare to embark on a comprehensive fundraising campaign. Eleven RFP responses were received last month out of fourteen requests sent to national campaign consulting firms. The RFP asked the firms to bid on a campaign feasibility study, which will be funded by the Foundation. The Foundation's Philanthropy Committee is currently reviewing those RFP responses and will identify three to five finalists for on-campus interviews in October.

COUNSELOR APPRECIATION DAY



To engage local high-school counselors more actively, the Office of Admissions held the first "Counselor Appreciation Day" on Wednesday, September 1st. This event attracted over 25 counselors from regional high schools. The program included presentations from financial aid, residence life, Global Leaders, and the chairs of several of our most unique academic programs. In addition, the counselors took a tour of campus and had lunch with a group of current Missouri

Southern students who spoke of their experience on campus and answered questions.

As part of the event, five \$1,000 scholarships were drawn. The counselors who won these scholarships could give them to a senior of their choice at their high school as an incentive for them to enroll at Missouri Southern. Future counselor appreciation days may occur in the spring and certainly an event like this next fall.

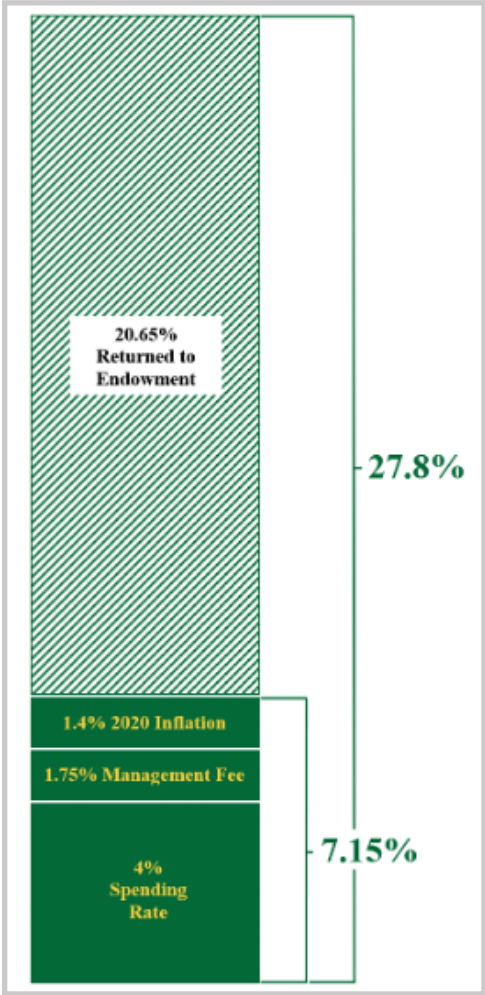
COMMUNITY ENGAGEMENT COMMITTEE



The Missouri Southern Foundation is leading a national trend by creating a new committee in FY 2021: Community Engagement. Rather than limiting its vision to the receipt, investment, and disbursement of private assets, the Foundation will play a role in creating and promoting high-impact donor and community engagement strategies. These strategies will be designed to foster repeat philanthropic gifts and a sense of ownership of both the Missouri Southern Foundation and the University. Six voting members of the Foundation board and five at-large community members make up this new committee. Activities include encouraging and facilitating outreach and external relations between regional communities and the University; promoting the good work of the University to broader audiences, and creating opportunities for community leaders to get involved with Missouri Southern.

The committee is chaired by Terry Wachter and began its work on July 1, 2021.

FOUNDATION INVESTMENT RETURN



While the Missouri Southern Foundation’s total assets as of June 30, 2021, were \$44.7 million, its investment portfolio on that same date was valued at \$25.8 million. In early 2020, the Foundation changed investment managers and engaged FEG of Cincinnati, Ohio, to manage its portfolio. FY 2020 was a challenging year not only from a market perspective, but also from a transfer of assets perspective (performance split between the previous and new managers). FY 2021 was FEG’s first fiscal year with full fiduciary management of the portfolio. In that most recent fiscal year (July 1, 2020 to June 30, 2021), FEG returned 27.8% on the Foundation’s portfolio.

This result far exceeds the Foundation’s target return of 7.15%. This target is calculated using the Foundation’s endowment spending rate (4%), plus its management fee (1.75%), and 2020’s inflation rate (1.4%). Given a FY 2021 total return on our invested funds of 27.8%, that means just over 20% was returned to each endowment’s corpus, offsetting any previous years of negative investment performance and adding a nice cushion to the value on which future spending calculations will be made.

MS. LORINDA HACKETT

INTERIM VICE PRESIDENT OF ACADEMIC AFFAIRS

OUTSTANDING TEACHER AND ADVISOR



Dr. Otto Borchert | Assistant Professor of Computer Information Science, Outstanding Teacher

"I have taken classes in several disciplines and I can say with great confidence that this teacher exemplifies the very best mentor, leader, teacher and influencer. He sees a student's passion, is always available, and is the gold standard for teaching professionals."



Dr. Cliff Toliver | Professor of English, Outstanding Teacher

"This individual was unequivocally my favorite teacher. He showed an interest in me as both a student and a person. As a student-athlete, my schedule is crazy and he cared enough to ask about my physical and mental health. I was not an English major, but I was still excited to come to class at 8 a.m. He improved my writing skills and has a unique ability to make English fun."



Ms. Jenifer Vieselmeyer | Master Instructor of Teacher Education, Outstanding Advisor

"I am very appreciative of the enormous amount of time and effort this advisor was willing to give to help me, a non-traditional, first-time student, single mom with a full-time job. She was very understanding, responded promptly every time to my calls and emails. She makes every effort to answer my questions or refer me to the correct department that would assist me."

PLASTER COLLEGE OF BUSINESS AACSB ACCREDITATION

The Plaster College of Business (PCB) has taken another significant step forward in achieving AACSB accreditation. The Association to Advance Collegiate School of Business (AACSB) International Initial Accreditation Committee (IAC) met on April 20-21 and reviewed the Initial Self Evaluation Report (iSER) submitted by the PCB. On May 27, the college received official notification that the IAC voted to accept the iSER. The notification reads in part:

(...continued on next page)

“The faculty, students, administration, and other stakeholders of Missouri Southern State University are to be congratulated on their efforts. The Initial Accreditation Committee commends the progress that your school has made toward earning AACSB International business accreditation and looks forward to working with your school in achieving its goals.”

The goal of the PCB is to be fully aligned with the accreditation standards with their second progress report due on February 15, 2023.

SEWERSHED PROJECT

During the Spring 2021 semester and starting back up in the fall, an intern in the Environmental Health & Safety Program at Missouri Southern has sampled weekly from a manhole collecting wastewater on the dorm side of campus. Our collection point represents a good portion of our on-campus student population as it is a composite of wastewater from many of the dorms and student dining center. To date, the greatest viral load detected was in our Aug. 23 sample.

“Since people may not have symptoms and it can take several days before infected people start to show symptoms, sewershed surveillance can provide early awareness of new or worsening outbreaks.”

This project is a collaborative effort between Missouri Department of Health and Senior Services (DHSS), Missouri Department of Natural Resources (DNR), and the University of Missouri (MU).

JOINT REVIEW COMMITTEE ON EDUCATION IN RADIOLOGIC TECHNOLOGY (JRCERT)



The continuing accreditation status of the Radiology program was considered at the Aug. 24 joint review committee. The program documents compliance with all relevant standards and JRCERT awards accreditation for the maximum period of eight years. Congratulations to Alan Schiska, Program Director and Department Chair.

THE “REYNOLDS REWILDING”

Dr. David Penning’s vision for a “greener” space through natural history displays in Reynolds Hall is coming to fruition. Several large terrariums were donated by the Missouri Department of Conservation, with others provided by Dr. Penning, and the Biology & Environmental Health Departments funding the remaining. In total, 13 species from around the globe are on display in the hallway. Animals from the local area include a Three Toed Box Turtles, Stinkpot Turtles, Amphiuma, and the Green Tree Frog; from North America, the Green Anole

(...continued on next page)

and Kingsnakes; from Africa, the African Bullfrog and a Jackson's Chameleon. South American displays include the Mata Mata Turtle, Pipa Pipa frog; while the Frilled Dragon from Australia is featured, along with Indonesia's Blue Tongue Skink; and from Central America, the Axolotls. Each animal has a unique life-history and students learn to fully care for them to gain valuable experience with animals that may otherwise only exist in the wild or in zoos.



DR. JULIE WENGERT

INTERIM VICE PRESIDENT OF STUDENT AFFAIRS

WELCOME WEEKEND

Various departments within Student Affairs offered programming designed to welcome our students to campus and to help students develop a sense of belonging to the Lion Family.

Between August 13-15, **Residence Life** welcomed more than 700 students to our on-campus housing facilities, including the new Lion Village. **Fraternity & Sorority Life** provided a volunteer crew to help incoming residents move into their rooms. Jack's Ice Cream served treats to all new residents and their families. On Aug. 14, the **Residence Hall Association** hosted an Outdoor Water Games event, which included a water-balloon toss, water-balloon target shooting, and more.



Student Activities offered several socially engaging activities during Welcome Weekend. "Mulan" was shown in the Phelps Theater. MOSO Social, hosted by **Fraternity & Sorority Life**, provided a casual and fun atmosphere for students to mingle, meet, play games and win prizes. The **Campus Activities Board** also hosted Big Prize Bingo in the Lion's Den.

The **Campus Activities Board and First-Year Experience** hosted Campus Craze, an event designed as an opportunity for students to meet with campus organizations and learn how to get involved. More than 30 clubs and organizations participated in this annual event.

First-Year Experience presented a speed meeting to facilitate a fun environment for new students to quickly build rapport with one another.



Incoming freshmen received their medallions, learned about MSSU traditions, and took their class photo during the 11th annual Student Convocation ceremony hosted by **First-Year Experience**. Kellen Cox, a MSSU graduate and former football student-athlete, served as the keynote speaker.

WELCOME WEEK



The Oval was a vibrant place to be during the first week of school with a variety of events offered. On the first day of class, the **Campus Activities Board** hosted the 19th annual Welcome Back Picnic. More than 700 students, faculty and staff were served. Campus Involvement Day occurred on the second day of class. Clubs and organizations set up on the Oval to recruit new members. **Career Services** welcomed 120 vendors for this year's Community Day event, held on the third day of class. To round out the first week, the **Campus Activities Board** offered Operation Glow Foam Party, which involves two DJs who travel the country playing popular music while using state-of-the-art lighting effects and a giant foam cannon shooting foam into the audience.

FRESH IDEAS



Food Services is always keeping it fresh at the Mayes Dining Hall with new and fun ideas. This semester's monotony breakers, called Nosh Nation, provide students a break from the everyday dining experience. The schedule for this fall includes an ice-cream sandwich bar, make your own cookie dough cone, seafood boil, sundae bar, Halloween treats and s'mores.

EDUCATIONAL TALENT SEARCH

The Director of Educational Talent Search, Jim Kimbrough, has secured the Educational Talent Search grant for the next five years. Five years is the maximum cycle for this grant offered by the Department of Education. The program serves students in grades 6 through 12 who have the potential to succeed at the college level. Students in the program benefit from advising, test preparation, career exploration, job shadowing, tutoring and more.

ROB YUST

VICE PRESIDENT OF BUSINESS AFFAIRS

RESIDENCE HALL - COMPLETE!

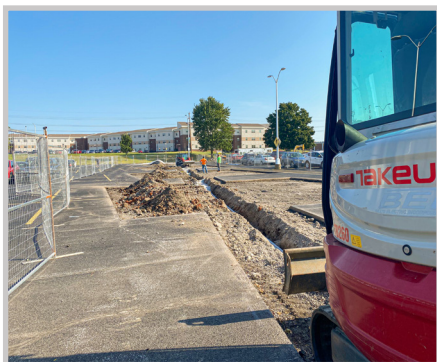


TRAIL PROJECT WITH CITY OF JOPLIN

We had a nice ribbon-cutting ceremony this morning. We will install fitness equipment, purchased from wellness funds, when we are comfortable that driving a cement truck in the field would not create large ruts in the ground next to the trail.

CAMPUS IMPROVEMENTS

We have several campus improvement projects currently underway that are being funded by the Federal Budget Stabilization Fund. Some of the projects:



- Pedestrian safety in the main parking lot: Raised walking medians.
- Street replacement/crosswalks: International Avenue from Newman Road to University Parkway.
- Tunnel safety improvements: Interior enhancements and new lighting.
- Oval infrastructure – New sidewalks, lighting and landscaping, and new entrances to Hearnese, Spiva Library, Reynold’s Hall and Webster Hall.

We are currently in the process of putting in the pedestrian safety enhancements in the parking lot and working on the entrance to Webster Hall.

The project should be complete around the first of February, depending on the weather.

TAYLOR PERFORMING ARTS CENTER (TPAC)



The engineering specifications were sent out to potential contractors this week. MSSU will receive \$2.5M in capital appropriations for the repairs to Taylor Performing Arts Center, which has been closed for a couple of years. We have heard that there are significant construction cost increases and a lengthy lead time on materials.

ROB MALLORY

DIRECTOR OF ATHLETICS

NAME, IMAGE, AND LIKENESS (NIL)

On July 1, the NCAA enacted interim policy that suspended previous legislation that made it impermissible for student-athletes to profit from the use of their name, image, likeness, or athletic reputation. The interim policy outlined the following expectations for member institutions:

1. NCAA Bylaws, including prohibition on pay-for-play and improper recruiting inducements, remain in effect subject to the following:
 - a. **For institutions in states without NIL laws in effect:** If an individual elects to engage in an NIL activity, their eligibility for intercollegiate athletics will not be impacted by the application of Bylaw 12 (existing legislation on Amateurism and Athletics Eligibility).
 - b. **For institutions in states with NIL laws in effect:** If an individual elects to engage in an NIL activity that is protected by law, their eligibility for intercollegiate athletics will not be impacted by application of NCAA Bylaws unless the state law is invalidated or rendered unenforceable.
3. The NCAA will continue its normal regulatory operations but will not monitor for compliance with state law.
4. Individuals should report NIL activities consistent with state law and/or institutional requirements.

(...continued on next page)

In summary, schools were directed to either develop a policy that permitted student-athletes to engage in NIL activities or to follow the applicable law in their state. In Missouri, state law went into effect on Aug. 28 that made outlined the following:

- Institutions cannot deny student-athletes NIL opportunities.
- Institutions cannot reduce athletics aid due to participation in NIL activities.
- Institutions cannot prevent student-athletes from fully participating in intercollegiate athletics due to NIL activities.
- A grant-in-aid or scholarship may not be construed as compensation for NIL.
- Student-athletes cannot enter into any NIL agreement that requires advertisement during official team activities if the agreement conflicts with an institutional contract.
- Student-athletes must disclose to the institution any NIL agreement before a contract for compensation is executed or compensation is provided.
- Institutions must conduct a financial development program for student-athletes at least once per year.

The Athletic Department has developed an NIL policy that outlines how both the NCAA interim policy and Missouri state law apply on our campus. Additionally, the MIAA has provided educational and interpretive resources to member institutions through a partnership with Seigfreid Bingham, P.C., a law firm in Kansas City, Mo.

COVID-19 IMPACT ON FALL SPORTS



With the emergence of the Delta variant of COVID-19, the pandemic is still having a noticeable impact on college athletics this fall. The NCAA Medical Advisory Group shifted its guidance away from sport-specific recommendations toward institutions making their own decisions based on prevalence of the disease in their local community and the vaccination status of student-athletes, coaches and other personnel. The MIAA directed member institutions to develop their own protocols and did not take action that applied conference-wide as was done during the 2020-21 academic year. We have worked closely the Willcoxon Health Center to develop protocols that will allow our student-athletes to safely compete this fall. Those protocols will be continuously evaluated as we monitor the spread of COVID-19 on campus and in the local community.

2021 NCAA CROSS COUNTRY CENTRAL REGIONAL



We will be serving as the host for the 2021 Men’s and Women’s NCAA Cross Country Central Region Championship on Saturday, Nov. 6, at the Tom Rutledge Cross Country Course. This is the first of four consecutive years that we will host the Central Region Championship. We will also be the host institution for the 2023 Men’s and Women’s NCAA Cross Country National Championship, set to take place on Nov. 18, 2023, at the Tom Rutledge Cross Country Course.

GAME PLAN PARTNERSHIP FOR STUDENT-ATHLETE DEVELOPMENT

The Athletic Department is entering into a partnership with Game Plan, the most widely used education and student-athlete development platform for high-school, collegiate and professional athletics organizations. This partnership will provide every student-athlete with access to 100+ innovative eLearning courses, all through an app on their phone. Game Plan currently partners with several Division 2 conferences, as well as organizations such as the NBA, NFL, Big 12, Kansas City Royals, and USA Basketball. Coursework provided through the platform covers the following areas:

- Student-Athlete Mental Health
- Financial Literacy and Fiscal Responsibility
- Sports Wagering and Integrity
- Nutrition, Diet, and Wellness
- Academic Success and Life Skills
- Professional and Career Development
- Diversity, Equity, and Inclusion
- Name, Image, and Likeness
- Inclusion and Allyship
- Healthy Relationships
- Sexual Violence Prevention

Standard courses are 5-7 minute lessons featuring pre and post-course assessment. We also have the ability to customize and supplement course materials with videos, documents and virtual presentations from staff members or other industry experts. Coaches and staff also have access to each eLearning course.

In addition to the e-learning course curriculum, we have access to additional career development tools that allow employers seeking to hire student-athletes to post jobs directly to the Game Plan app as well as a robust mentorship platform that allows alumni to engage with current student-athletes. We are working on integrating these services with those already provided in the Office of Career Services and the MSSU Alumni Association.