

MISSOURI SOUTHERN  
STATE UNIVERSITY

# BOARD OF GOVERNORS

---

NOV. 18, 2020 | REPORT





# DR. DEAN VAN GALEN

PRESIDENT

## LAUNCH OF NEW GLOBAL LEADERS PROGRAM



The university is excited to announce the launch of a new student-centered program...Global Leaders. Beginning in the fall of 2021, each year a group of 50 outstanding incoming Missouri Southern freshmen will be selected to participate in this distinctive program. These Global Leaders will be provided with scholarship support, participate in leadership development experiences, and receive a stipend to be used for study abroad, undergraduate research or

other educational opportunities. The Global Leaders Program will be unique to the Four States region and will support Goal #1 of our strategic plan: strategically grow enrollment and increase student attainment through graduation.

I appreciate the team that has worked collaboratively with me to develop the Global Leaders Program: Dr. Shellie Hewitt (Dean of Admissions), Dr. Michael Howarth (Director of Honors Program), Dr. Paula Carson, and Dr. Brad Hodson.

As part of the launch of the program, the university is pleased to announce a significant charitable gift received by the Missouri Southern Foundation that, through a Board-designated endowment, will provide financial support for the Global Leaders Program. We are grateful for this philanthropic support and the partnership that exists between the University and the Missouri Southern Foundation.

## LEGISLATIVE PRIORITIES FOR 2021



The President's Cabinet met with members of our regional legislative delegation on November 13th to review legislative priorities for the 2021 session. The following university budget and policy priorities were discussed:

- Core Funds to Support STEM Programs (\$1.8 million). The university's top priority is to secure \$1.8 million in core, ongoing funding to support

the quality and growth of existing and new initiatives in STEM and related health sciences programs.

- One-Time Capital Funds to Repair and Re-Open the Taylor Performance Arts Center (\$2.0 - \$3.0 million). TPAC, the largest performing arts venue in Southwest Missouri, is currently not useable due to serious structural issues with the theater stage area. This funding would remediate the issues and re-open TPAC.

## FIRST GENERATION DAY CELEBRATED AT MISSOURI SOUTHERN



As part of a national effort, on November 9th our campus celebrated first-generation students, faculty and staff with a brief program in Billingsly Student Center and with the wearing of "First to Roar" buttons. This year's event at Missouri Southern was organized by the staff of Project Stay, one of the Federal TRIO programs on campus that supports postsecondary access, retention, and completion for students,

including first-generation college graduates.

Educational attainment, including college-degree completion, continues to be a critical to enabling social mobility for individuals and to supporting robust economic growth and a thriving democracy.

As always, Lions Together.

*"There are two ways of exerting one's strength; one is pushing down, the other is pulling up."*

- Booker T. Washington



# DR. BRAD HODSON

EXECUTIVE VICE PRESIDENT

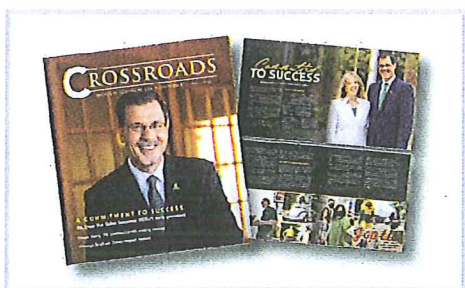
## FUNDRAISING – FIRST QUARTER FY 2021



The Missouri Southern Foundation received 29 gifts of \$10,000 or more in the period of July 1 – September 30, 2020, totaling \$2.27 million – an increase of 2.5% over the first quarter of last fiscal year. Notable among this total was:

- \$1.75 million in planned gift commitments
- \$300,561 received for student scholarships
- \$137,547 for capital construction projects, including the indoor golf practice facility and the indoor baseball/softball hitting facility
- \$100,000 toward the BKD Endowed Professorship in Accounting.

## CROSSROADS



The Fall 2020 edition of Crossroads magazine is headed to mailboxes across the country with 45,000 alumni and friends slated to receive the publication this week. Included in the publication is an eight-page "Donor Impact Report." This insert features statistics on charitable giving at Missouri Southern, the life-cycle of a gift, scholarship information, and a "did you know" section with interest insights. The purpose of the insert is to promote philanthropy to all Missouri Southern constituents through Crossroads magazine.

## LA FERLA ACADEMIC ADVISING CENTER



In recognition of the many years of generosity, more specifically their recent gift to fund an academic advising position for intercollegiate athletics, Missouri Southern recently named the academic advising center in the North End Zone Facility in honor of Don and Gloria LaFerla. A ribbon cutting was held in October to commemorate their philanthropic support. The addition of a second academic

advisor increases the advising center's ability to assist student athletes with their coursework, time management, class scheduling and consistent progress toward graduation.

## **INTERNATIONAL STUDENT MOU WITH NEO**



Tomorrow Missouri Southern will sign a memorandum of understanding with NEO A&M College in Miami, Okla., to facilitate the smooth transfer of international students to Missouri Southern following the completion of an associate's degree. NEO has a large population of international students, many studying in areas with which MSSU has complimentary bachelor's degree programs. The purpose of the MOU is to ensure that international students transferring from NEO have a clear understanding of the

requirements for admissions and that MSSU staff are prepared to welcome them to our campus.

## **DR. PAULA CARSON** VICE PRESIDENT FOR ACADEMIC AFFAIRS

### **MSSU CHILDCARE EXPANSION GRANT - CENTER FOR APPLIED BEHAVIOR ANALYSIS**

On September 29th, the MSSU Psychology Department, in collaboration with the Lion Cub Academy, was awarded \$470,519.17 by the Missouri Department of Social Services-Children Division to expand our on-campus childcare center. This grant will allow for the expansion of childcare opportunities and educational experiences to help meet the unique academic, social, and emotional needs of our community's children. This expansion will include early intervention in the form of applied behavior analysis for individuals with Autism Spectrum Disorder, as well as, those with challenging behaviors, learning and mental health disorders. The majority of the grant funds will be spent on the renovation of the former MSSU Child Development Center located in Taylor Hall within the College of Education, to become the new applied behavior analysis center. This state-of-the-art center will provide the educational environment for direct assessment and treatment of individuals in Southwest Missouri who lack access to quality childcare and resources. As a direct result of the grant and the expanded space, MSSU students seeking Board and/or University certification in applied behavior analysis will now have the opportunity to engage in an on-site experiential learning environment. Once complete, the center will offer hands-on learning opportunities for MSSU students, as well as, be a leading resource center for service providers and families of children with Autism or social, emotional and learning disabilities.



## DIGITAL BACKPACK FOR FACULTY



The Digital Backpack contains 12 unique software titles now available to Southern faculty which are being widely used in internet, hybrid and traditional courses. Most Backpack software is integrated directly into Blackboard, providing students and faculty seamless access to the various platforms from within individual Blackboard courses. Backpack items support and facilitate academic integrity in online assessments, online course management tasks, the

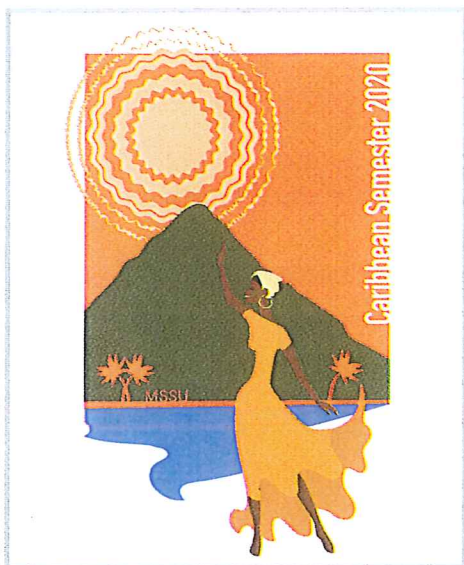
creation of multimedia content, digital classroom collaboration, student-to-student and student-to-faculty engagement, individual student feedback, and much more. All at no direct cost to students. For example:

1. **Honorlock** provides a more secure testing environment for online exams.
2. **Edpuzzle** and **Playposit** allow faculty to integrate questions or other prompts for students into video content, compelling students to watch and engage with video content.
3. **Yellowdig** gamifies and enhances online discussions, awarding badges and points for substantive and well-received comments within a modern, social media inspired interface.
4. **Camtasia** and **Snagit** allow faculty to create, edit and share screen recordings and other video content.
5. **VoiceThread** enhances engagement and collaboration to slideshow presentations by integrating audio and video commentary and discussion.
6. **Gradescope** digitizes and organizes paper assignment submissions, providing faculty an incredibly efficient method of grading while ensuring each student receives the precise feedback needed to improve.

Adoption by faculty of Digital Backpack items has been immediate:

1. **Honorlock:** 2,456 students took the online tests of 67 faculty in 178 courses for a total of 7,995 testing sessions in September. Faculty have also devised an ingenious method to use the system for secure exam review, which is critical to student success, and before now an incredible challenge complete securely.
2. 39 faculty are using **Camtasia** or **Snagit**, creating and sharing customized instructional video content for their students, available anytime, anywhere via Blackboard.
3. **Yellowdig**, by far the most popular new technology, is setting new standards in online discussion engagement and effectiveness. Faculty testimonials have been extraordinarily positive.
4. **Playposit** "bulbs" (interactive learning videos) are being deployed by 49 faculty with 1,025 active student users. 296 "bulbs" have been built, resulting in over 3,000 hours of student engagement so far this semester.
5. Using **VoiceThread's** slideshow collaboration platform, students logged 419 hours of engagement, posting 1,819 audio or video comments in October alone.

## FALL 2020 CARIBBEAN SEMESTER



The Caribbean Semester – the 24th themed semester MSSU has celebrated since 1997 – has gone off without a hitch thanks to the technology working every time. We had originally scheduled 31 events and nine films. Only one speaker, based in Ohio, had to cancel. Twenty of our events have simultaneously been shown on Zoom and in one of our auditoriums on campus. Most of the events have been recorded, with the links available on the Caribbean Semester website ([www.mssu.edu/academics/international-studies/themed-semester/caribbean-schedule-of-events.php](http://www.mssu.edu/academics/international-studies/themed-semester/caribbean-schedule-of-events.php)). We have brought a few speakers to campus, but the majority have given their presentations via Zoom to reach our campus and local community. Kyle Vann, IT's Event Support Services technician, has made sure everything has worked perfectly, often conducting

tests with the speakers a day or two before. One highlight was a Zoom conversation with Haitian-born author Edwidge Danticat from her home in Miami, Florida, on Oct. 10. Students bombarded her with questions for about an hour and felt privileged to have the undivided attention of someone who was once featured in Oprah's Book Club. A guest conductor, also from Haiti, led the Southern Symphony Orchestra in performing works of composers from across the Caribbean in an Oct. 23 concert at the Central Christian Center in downtown Joplin.

Eight students participated in an evening of "Readings from the Caribbean" on Nov. 5. The students read poems or short stories from the British Virgin Islands, Puerto Rico, Martinique, Barbados, Haiti, Antigua, Jamaica, and Trinidad and Tobago.

We conclude the Caribbean Semester on Nov. 23 with "Caribbean Rhapsody in Brass and Steel," a three-song arrangement specifically written for the MSSU steel band and trombone quartet. It will be performed in Corley Auditorium at 5 p.m., but also livestreamed so that people can watch from home. We will begin planning for the Fall 2021 Japan Semester in January. MSSU had a Japan Semester in Fall 2001, so it will have been 20 years since we featured this country. China is the only other country we've done twice.



# DARREN FULLERTON

## VICE PRESIDENT FOR STUDENT AFFAIRS

### **STUDENT EMERGENCY ASSISTANCE FUND (SEAF)**

Student Affairs and University Advancement have collaborated to create the Student Emergency Assistance Fund. The Student Emergency Assistance Fund was created to help students with financial assistance in a time of need. This fund is intended to be a supplemental financial resource when students are unable to meet immediate and essential expenses due to unexpected, unforeseen and unavoidable circumstances. Students may apply for funds when they have exhausted all other resources, including loans through the Office of Student Financial Aid. This funding is not intended to replace or supplement existing financial aid and is considered a grant that does not have to be repaid.

The spirit of this funding is primarily to support emergency circumstances. The goal is to help prevent one emergency or unexpected expense from jeopardizing a student's academic journey. The number of students who can be served by the Student Emergency Assistance Fund is subject to the availability of funds. Funding is awarded on a case by case basis, and factors that are considered include the student's financial need, the nature of the funding request, and the availability of funding at the time the request is made. The fund is open to all currently enrolled Missouri Southern State University students and priority will be given to students with the highest financial need. Please note the University may not be able to fulfill all requests. Donations will be made to the MSSU Foundation's "Lions Helping Lions" Fund.

### **UNIVERSITY EMERGENCY OPERATIONS PLAN**

MSSU is currently revising its Emergency Operations Plan. Plans include a variety of updates, and the implementation of a system which identifies how intensely an emergency could affect the campus and its surrounding communities, who officials should work with to handle the emergency, and how to alert students or community members. The University will follow the National Incident Management System (NIMS) which outlines a specified Incident Command Structure to be followed in the event of an emergency. The plan was developed with consultation from the Joplin Police Department, the Jasper County Sheriff's Office, and Joplin/Jasper County Emergency Management.



## **COUNCIL FOR THE ADVANCEMENT OF STANDARDS IN HIGHER EDUCATION (CAS) PROGRAM REVIEWS**

Select Student Affairs Units have completed their self-assessment process and presented their program review to the CAS Review Team. Units are currently concluding their program reviews and drafting their executive summaries for final documentation and submission. Various Student Affairs Units are up for review each year, and operate on a four-year cycle for program review in 12 areas (mission; program and services; student learning, development and success; assessment; access, equity, diversity, and inclusion; leadership, management, and supervision; human resources; collaboration and communication; ethics, law, and policy; financial resources; technology; facilities and infrastructure) . CAS resources for program review assist in improving an existing program or service by benchmarking against an extensive list of national standards and criteria.

This year's programs selected for review include: Advising Office, Student Activities, Alcohol and Other Drug Programs, and the University Police Department. 2021 CAS Reviews will be due October 1st for the following: Counseling Services, Student Conduct, Fraternity & Sorority Advising Programs, Parent & Family Programs/Orientation Programs, Disability Resources & Services/Learning Assistance Programs, Career Services, Collegiate Recreation Programs, Housing & Residential Life, Financial Aid Programs, Registrar Programs & Services, Talent Search, Upward Bound, and Project Stay.

## **MSSU STUDENT AFFAIRS HAS BEEN SELECTED TO PARTNER WITH THE MISSOURI DEPARTMENT OF SOCIAL SERVICES (DSS)**

The mission of the DSS is to lead the nation in building the capacity of individuals, families, and communities to secure and sustain healthy, safe and productive lives. MSSU was selected to partner with the Missouri DSS to provide an on-campus location in which DSS resources can be provided to the MSSU campus community. The dedicated space for the DSS Benefits Program Specialist is located in Billingsly Student Center, Room 241D. The Benefits Program Specialist for MSSU is Gwendolyn Kelly, who will be on campus every Tuesday from 8am – 4:45pm (closed for lunch at 12:30-1:30pm). Due to COVID-19, no in-person appointments are occurring and the office location will be used for campus constituents to conduct their virtual appointments with the Benefits Program Specialist. Appointments will be scheduled through the MSSU Student Affairs Office at 417-625-9392 or [dss@mssu.edu](mailto:dss@mssu.edu). All DSS support will occur through appointment only.

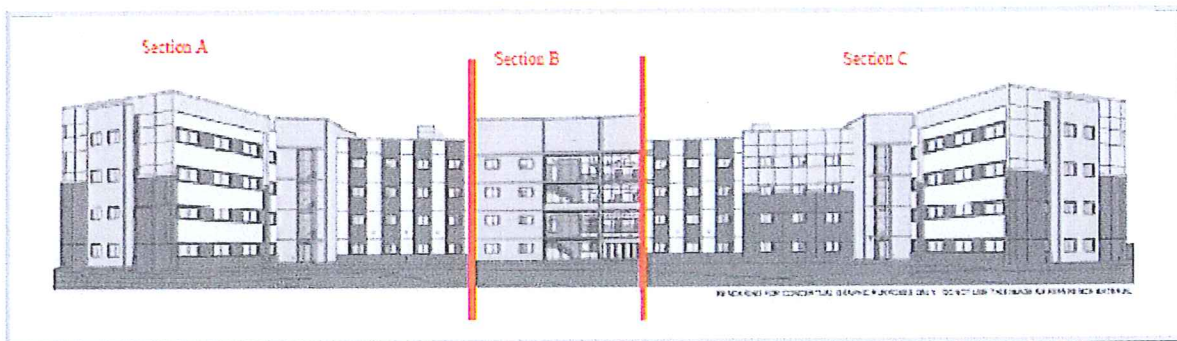
# ROB YUST

VICE PRESIDENT FOR BUSINESS AFFAIRS

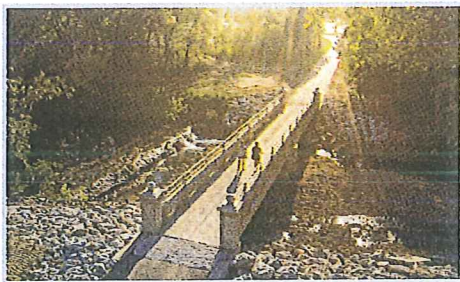
## CONSTRUCTION

### RESIDENCE HALL

If you recall the facility is divided into 3 sections. The framing is complete on section C for all four floors and the roof is finished. Section B structure is complete but the roof is not complete yet. Section A is complete through the third floor and they are framing the fourth floor. Rough in plumbing on all sections continues as well as hanging and finishing sheetrock. The contractor is installing the aluminum store fronts and glass. Water and storm sewer connections have been made throughout. The residence hall will be an approximate 92,000 sq. ft., 4 story facility which will house approximately 300 students and is scheduled to be complete in summer 2021 with occupancy that fall.



### TRAIL PROJECT WITH CITY OF JOPLIN



MODOT and the City did the final walk through for the project last Thursday. The City will need to make some minor repairs to the asphalt to make the trail ADA compliant. The Physical Plant and IT staff are completing the installation of the lights and cameras. We are clearing brush and some trees to make the area more appealing. Hopefully the trail project will be entirely finished within a couple weeks. We will plan a formal ribbon cutting in the spring when students come back to campus.



# JARED BRUGGEMAN

ATHLETIC DIRECTOR

## MSSU STUDENT ATHLETE ADVISORY COUNCIL (SAAC) WRAPS UP TRICK OR TREAT SO OTHERS CAN EAT CAMPAIGN



Giving back, that's a feeling that every coach tries to instill on their student-athletes and the student-athletes at Missouri Southern have taken that thought and ran with it.

This year in the department's annual Trick or Treat So Others Can Eat campaign, the student-athletes at MSSU helped collect canned goods that would then be donated to Soul's Harbor in downtown Joplin.

The student-athletes broke the event up into two parts – first distributing flyers to neighborhoods that asked them to prepare donations and then later returning to collect the donations.

Their efforts culminated last week on October 20 when more than 7,500 non-perishable items (7,527 to be exact) were loaded onto trucks and delivered to Soul's Harbor. That number broke the previous record for items collected which was a little more than 6,300 in 2017.

Officials at Soul's Harbor say the donations each year by the student-athletes help keep their shelves stocked well into the spring and is the largest food donation by far throughout the course of the year.

Joe Kinder, president of the Student-Athlete Advisory Committee said he and his fellow student-athletes are proud each year to work on a project like this. "SAAC features a tremendous group of leaders from each sport that helped put on the event," Kinder said. "And with the help of all the student-athletes and our community, we were able to reach a number that we never have before. The best part for us every year is seeing the looks on the faces of the team members at Soul's Harbor, and hearing this kind of donation will last them until the spring. That alone makes all of the work we put into it worth it."

**Video Link to event:** [www.youtube.com/watch?v=7sNdP3B7fHs&feature=youtu.be](https://www.youtube.com/watch?v=7sNdP3B7fHs&feature=youtu.be)

## 1972 FOOTBALL TEAM INDUCTED INTO MISSOURI SPORTS HALL OF FAME



The 1972 Missouri Southern NAIA Football National Championship team was inducted, on October 20, into the Missouri Sports Hall of Fame as part of the Football Sports Enthusiasts Luncheon in Springfield inside the Ozark Empire Fairgrounds E\*Plex East Wing in Springfield.

"This honor is well-deserved and representative of the fine student-athletes and coaches that I had the privilege of working with," said former head coach and athletic director Jim Frazier. "I am very proud of this special group of young men." The 1972 MSSU Football team won the NAIA Division II Championship by defeating Northwestern College of Iowa, 21-14 in Joplin. Under the direction of Frazier, the team finished the season with a perfect 12-0 record.

The game served as a first for both Southern and the State of Missouri as the Lions became the first collegiate football team in the state of Missouri to win a National Championship.

The 1972 football team joins eight other individuals and one other team with ties to Missouri Southern to be inducted into the Missouri Sports Hall of Fame. Also in the HOF are Sallie Beard, Robert Corn, Pat Lipira, Tom Rutledge, Anita Rank Oplotnik, Rod Smith, Warren Turner, Patty Vavra and the Missouri Southern Women's Track and Field and Cross Country Programs.

Web Link: [www.youtube.com/watch?v=ZudJfvuvwm\\_w&feature=youtu.be](https://www.youtube.com/watch?v=ZudJfvuvwm_w&feature=youtu.be)

## RESUMPTION OF WINTER SPORTS ACTION BEGINS TONIGHT WITH MEN'S AND WOMEN'S BASKETBALL



The MIAA will open up basketball play, November 19, as Missouri Southern will be on the road at Central Oklahoma. The games will constitute the first official action played in the league since the beginning of the Covid-19 pandemic. The Missouri Southern men have been picked to finish 2nd in the MIAA Preseason Coaches Poll, while the women have been picked to finish 10th.

The Lions will have 11 home games inside the Leggett & Platt Athletic Center this season with the home opener starting on December 3 against Northeastern State.



## **ATHLETICS SAAC AND STAFF LEAD BY EXAMPLE IN DIVERSITY AND INCLUSION INITIATIVES**



The Student-Athlete Advisory Committee leadership (SAAC) felt the need to establish a diversity sub-committee to create a safe avenue for our student-athletes to share thoughts and opinions regarding social and racial injustice issues in our country. Their shared goal is to use their platform to bring light to all marginalized groups beginning with people of color. This began with an approved unity statement from President's Cabinet – WE ARE ONE and

#WeAreOneMOSO - to be used across our campus. So far, the student led diversity sub-committee participated in the #NCAAIInclusion, 3-day campaign: My story matters, we got your back, and together we rise; using personally written signs and our unified oval photo taken in July. They are currently working on a MIAA unity statement to be played before each athletic event and virtual panels allowing student-athletes to tell their stories and others to simply listen. All of these ideas were presented to our head coaches and administration, receiving lots of support.

The SAAC diversity sub-committee inspired the Athletic Diversity Taskforce comprised of 13 athletic department coaches and staff. This group wants to assist in providing resources for coaches and staff to grow and support each other. They are working on an athletic diversity commitment statement, developing a website tab showing our plans, and updating the athletic mission statement and objectives with language that includes all who represent the Athletic Department. Those will be followed by speakers and training sessions to develop our department in Diversity, Equity, and Inclusion. .

# MISSOURI SOUTHERN

---

## STATE UNIVERSITY

---

### FACULTY SENATE

#### President's Report

November 18, 2020

Board of Governors,

Thank you for the opportunity to be here today. I would like to start by acknowledging and thanking the Board of Governors for their continued work on ensuring the safety of our students, staff, and faculty during this ongoing pandemic. I believe MSSU has done an admirable job this semester in balancing the need and preference of face-to-face instruction with campus safety, which has allowed us to remain in the classroom up to this point. The decision to pivot online following the Thanksgiving holiday should not be seen as a failure in our Covid-19 preparation and response, but a necessity given circumstances beyond the control of MSSU. Further, I believe this pivot not only reinforces MSSU's dedication to the safety and wellbeing of the campus community, but its faith in the faculty and staff to meet the needs of our students despite these unfavorable circumstances.

Since the September Board of Governors meeting, the faculty senate has sent charges to the faculty welfare committee concerning load and compensation concerns as well as the committee on committees to look at the language and procedures for the faculty grievance process. Additionally, we had our 3rd read of the new proposed Master Instructor Language, which passed unanimously, as well as our first read of the new intellectual Property Policy, which we should vote on in our December meeting.

Stay Safe,

Mikh Gunderman, PhD

Faculty Senate President

Assistant Professor, Criminal Justice

Missouri Southern State University



# MISSOURI SOUTHERN

---

## STATE UNIVERSITY

---

### STAFF SENATE

#### **Board of Governors Staff Senate Report**

November 18, 2020

#### **I. Staff Conversations Update**

In an effort to improve communication, “Staff Conversations” continue to be a part of our monthly agenda between the Staff Senate Executive Committee and President’s Cabinet. Recent topics brought forward include an update on the remote/telework policy, discussion about vacation accrual maximums, and concerns about visitors on campus.

#### **II. Special Meeting: COVID-19**

Staff Senate held a special meeting immediately following the November Staff Senate meeting to gather feedback on how staff are responding to the University’s COVID procedures. During the meeting we voted to endorse Student Senate’s resolution to move to online instruction following Thanksgiving Break. We also discussed a number of staff’s COVID-related concerns which were later presented to the COVID Task Force. Staff Senate is currently working with the Task Force and Willcoxon Health Center to address these concerns and improve campus communications.

#### **III. 2020 Angel Tree Program**

The Staff Senate Community Service committee is busy organizing and hosting the 2020 Angel Tree program. The program, designed to help Pell-eligible students and their families, provides Southern staff and faculty the opportunity to adopt an “angel” (children 18-years or younger of students) to help provide gifts to these families who may need a little extra help this holiday season. Thirty-five Pell-eligible students were accepted into this year’s program, with 82 angels up for adoption. Gift wrapping is slated for December 1<sup>st</sup> from 11AM-4PM in the NEZ with distribution scheduled to coincide with this year’s Southern Lights.

#### **IV. Quarterly Service Champs**

Staff Senate seeks to bring recognition to outstanding staff members through the Southern Service Champ Award. Awardees are nominated by peers and must meet one of the five pads of the Lion Paw. Third Quarter recipients included:

Lori Musser, Coordinator of Disability Services – Disability Services  
Rena Peine, Registered Nurse – Willcoxon Health Center  
Kyle Vann, Event Support Specialist – Information Technology

# MISSOURI SOUTHERN

---

## STATE UNIVERSITY

---

### STAFF SENATE

#### 2020-2021 Staff Senate Executive Committee

**Debra Schow-Smith** (*President*), HR Training Specialist – Human Resources

**Michael Opfer** (*President-Elect*), Evening Custodian Supervisor – Custodial

**Ashley Brownfield** (*Secretary*), Coordinator of Project Management –  
Information Technology

**Craig Thompson** (*Parliamentarian*), Academic Skills Specialist – Student  
Success Center

#### 2020-2021 Staff Senate

**Brenda Beasley**, Project Manager – Academic Affairs

**Denice Brown**, Academic Records Specialist – Registrar's Office

**Melinda Brown**, Director – Gipson Center

**Martha Freeman**, Administrative Assistant – Academic Outreach

**Laura Gullett**, Green Dot Program Coordinator – Student Affairs

**Christina Hamilton**, Administrative Assistant – Academic Affairs VP

**Talbott Harrison**, IT Support Tech – Information Technology

**Stephanie Hopkins**, Director – Student Success Center

**Amber Lewis**, Counselor – Financial Aid

**Mike Olmstead**, Director of News Services & Messaging – University Relations  
and Marketing

**Shakira Rhoads**, Assistant Director – Career Services

**Teresa Shufflin**, Database & Prospect Research Director – Foundation