



MISSOURI SOUTHERN STATE UNIVERSITY

WOMEN'S BASKETBALL REPORT

Feb. 9, 2008

FOR IMMEDIATE RELEASE

Lions look for seventh win in their last nine MIAA games by hosting Fort Hays State

2007-08 LIONS SCHEDULE

DATE	OPPONENT	TIME
Nov. 4	@ Arkansas (EX)	L, 47-52
NOV. 10	LIVIN' THE DREAM (EX)	W, 74-49
Nov. 16	@ St. Edwards	W, 60-39
Nov. 17	vs. Incarnate Word	W, 52-43
Nov. 23	vs. St. Mary's	W, 66-29
Nov. 24	vs. Quincy	W, 83-51
NOV. 28	WEBSTER UNIVERSITY	W, 86-36
DEC. 1	ST. EDWARDS	W, 60-42
Dec. 7	@ OK Panhandle State	W, 59-44
Dec. 17	@ Northeastern State	W, 70-62
DEC. 19	EVANGEL	W, 79-62
Jan. 2	@ Truman State *	L, 55-68
JAN. 5	MISSOURI WESTERN * ..L, 72-74	
JAN. 9	PITTSBURG STATE * ..L, 44-54	
Jan. 12	@ Central Missouri *	W, 85-82
Jan. 16	@ Northwest Missouri *	W, 65-64
JAN. 19	SOUTHWEST BAPTIST * W, 58-55	
JAN. 23	#16 EMPORIA STATE * W, 90-71	
Jan. 26	@ Fort Hays State *	L, 59-70
Jan 30	@ #12 Washburn *	W, 69-61
FEB. 2	TRUMAN STATE * W, 77-71 OT	
FEB. 6	#19 WASHBURN * ..L, 59-72	
FEB. 9	FORT HAYS STATE * ..L, 5:30 PM	
Feb. 13	@ Emporia State *	5:30 pm
Feb. 16	@ Southwest Baptist *	5:30 pm
FEB. 20	CENTRAL MISSOURI * ... 5:30 PM	
FEB. 23	NORTHWEST MISSOURI * .. 1 PM	
Feb. 27	@ Pittsburg State *	5:30 pm
Mar. 1	@ Missouri Western *	5:30 pm
Mar. 6-9	@ MIAA Tournament	TBA (Kansas City, Mo.)

Bold Indicates Home Game
* Indicates MIAA Game

Missouri Southern (15-5, 6-5 MIAA) vs. Fort Hays State (9-10, 3-7 MIAA)

Sat. Feb. 9 • Joplin, Mo.

Tipoff: 5:30 p.m.

Arena: Leggett & Platt Athletic Center (3,200)

Last Meeting: 1/26/08: FHSU defeated MSSU, 70-59 in Hays, Kan.

Radio: KHST 101.7 FM Tall Grass Country; Kevin Greim (play-by-play)

TV: www.themiaa.tv

Internet Audio: www.mssu.edu/athletics

Live Internet Stats: <http://www.mssu.edu/athletics/mensbasketball/live/xlive.htm>

PROBABLE STARTERS

LIONS (15-5, 6-5 MIAA)		Pos.	Yr.	Ht.	PPG	RPG	APG
5	India Wood (Decatur, Ala.)	G	Jr.	5-7	10.6	3.5	4.1
21	Ela Zawadka (Torun, Poland)	G	Sr.	5-11	6.6	4.0	1.3
22	Danielle DeVader (Holton, Kan.)	G	Jr.	5-9	5.5	3.2	1.7
23	Lindsey Davis (Wellington, Kan.)	G	Jr.	5-8	5.5	2.0	1.8
42	Tynesha Pierce (Houston, Texas)	F	Sr.	6-0	11.7	6.1	0.6

Fort Hays State (9-10, 3-7 MIAA)		Pos.	Yr.	Ht.	PPG	RPG	APG
10	Kayla Klug (Odin, Kan.)	G	So.	5-8	8.3	2.8	2.1
20	Naomi Bancroft (Vona, Colo.)	G	So.	5-8	12.4	3.1	1.3
21	Meshia Mason (Liberal, Kan.)	G	Sr.	5-3	3.4	4.2	4.0
25	Brianna Willhite (Wichita, Kan.)	F	Sr.	6-1	13.6	5.2	0.7
33	Sheena Kuntzsch (Scott City, Kan.)	G	Sr.	5-9	13.1	7.0	2.8

THE COACHES

After six straight winning seasons, Maryann Mitts is quickly closing in on becoming the winningest coach in Missouri Southern history. With 113 career victories, Mitts is now the second all-time winningest coach at MSSU and trails Jim Phillips by just 16 games. Under Mitts' guidance, the Lions have put together 15 or more wins in five of Mitts' six years at the helm and have moved back into the upper echelon of the highly competitive Mid-America Intercollegiate Athletics Association. Last year, Mitts helped the Lions overcome an injury-riddled season to post their sixth straight winning record at 14-13, including a tie for fifth place in the MIAA and a sixth consecutive appearance in the MIAA Postseason Tournament. Overall, Mitts has compiled a 113-76 (.598) record in her seventh season with the Lions. She holds a 196-132 (.598) mark now in her 12th year as a collegiate head coach. Mitts is 1-2 vs. FHSU as the Lions' mentor.

Annette Wiles is in her eighth season of directing the Fort Hays State University women's basketball program. She is 133-85 during her career at FHSU and 297-137 overall. Wiles led the Lady Tigers to a 21-7 record during the 2005-06 season and a Rocky Mountain Athletic Conference Tournament appearance. The Lady Tigers have reached the 20-win plateau three times in Wiles' tenure Fort Hays State. Wiles is 2-1 vs. the Lions as the FHSU mentor.



CONTACT: LEVI CONVIRS, SPORTS INFORMATION ASSISTANT

EMAIL: SPORTSINFO@MSSU.EDU
3950 E. NEWMAN RD.
JOPLIN, MO
64801-1595

OFFICE: 417/625.9851
FAX: 417/625.9397
CELL: 918/533/8707



Visit Missouri Southern Athletics on the web at www.mssu.edu/athletics

2007-08 MIAA STANDINGS

	MIAA		All Games	
	W-L	Pct.	W-L	Pct.
Southwest Baptist [5]	8-3	.727	16-4	.800
Washburn (19) [3]	8-3	.727	16-4	.800
Emporia State (22) [7]	8-3	.727	15-5	.750
Missouri Southern [2]	6-5	.545	15-5	.750
Northwest Missouri State	6-5	.545	11-9	.550
Truman State	5-6	.455	13-7	.650
Missouri Western	4-7	.364	9-10	.474
Central Missouri	4-7	.364	9-11	.450
Fort Hays State	3-8	.273	9-11	.450
Pittsburg State	3-8	.273	9-11	.450

WBCA/USA Today/ESPN Division II Coaches Poll ranking in parenthesis
NCAA Division II South Central Region ranking in brackets

SATURDAY, FEBRUARY 9
 *NWMSU @ UCM, 1:30 PM
 *TSU @ SBU, 1:30 PM
 *ESU @ MWSU, 5:30 PM
 *FHSU @ MSSU, 5:30 PM
 *PSU @ WU, 5:30 PM

MONDAY, FEBRUARY 11
 *FHSU @ UCM, 5:30 PM

WEDNESDAY, FEBRUARY 13
 *MSSU @ ESU, 5:30 PM
 *MWSU @ PSU, 5:30 PM
 *SBU @ WU, 5:30 PM
 *TSU @ NWMSU, 5:30 PM

SATURDAY, FEBRUARY 16
 *WU @ TSU, 1:00 PM
 *PSU @ NWMSU, 1:30 PM
 *MSSU @ SBU, 5:30 PM
 *MWSU @ FHSU, 5:30 PM
 *UCM @ ESU, 5:30 PM

WEDNESDAY, FEBRUARY 20
 *ESU @ PSU, 5:30 PM
 *NWMSU @ WU, 5:30 PM
 *SBU @ FHSU, 5:30 PM
 *TSU @ MWSU, 5:30 PM
 *UCM @ MSSU, 5:30 PM

RECENT RESULTS

SATURDAY, FEBRUARY 2
 *TSU 71 @ MSSU 77 FINAL/OT
 *PSU 58 @ UCM 70 FINAL
 *FHSU 64 @ ESU 77 FINAL
 *MWSU 44 @ WU 68 FINAL
 *NWMSU 80 @ SBU 85 FINAL

WEDNESDAY, FEBRUARY 6
 *NWMSU 0 @ ESU 0 PPD., WEATHER, RESCHEDULED FOR 2/7, 5:30 P.M.
 *SBU 82 @ MWSU 72 FINAL
 *UCM 79 @ TSU 72 FINAL
 *WU 72 @ MSSU 59 FINAL

THURSDAY, FEBRUARY 7
 *FHSU 60 @ PSU 62 FINAL
 *NWMSU 67 @ ESU 86 FINAL, ESU'S MICHELLE STUEVE BECOMES MIAA'S CAREER SCORING LEADER WITH 27 POINTS -- 2,161 TOTAL

ALL-TIME SERIES VS. FORT HAYS STATE

1/28/77	Fort Hays	103-81
2/18/77	Southern	66-54
1/13/78	Fort Hays	86-59
2/3/78	Fort Hays	64-58
1/27/79	Fort Hays	65-58
2/17/79	Southern	81-73
1/18/80	Fort Hays	76-60
2/10/80	Fort Hays	88-74
1/31/81	Fort Hays	76-56
2/21/81	Fort Hays	102-86
1/22/82	Southern	80-68
2/20/82	Fort Hays	90-68
1/28/83	Southern	77-71
2/19/83	Fort Hays	67-64
1/21/84	Southern	81-77
2/3/84	Southern	95-77
1/18/85	Fort Hays	69-59
2/16/85	Southern	84-63
1/31/86	Southern	84-67
2/22/86	Fort Hays	79-76
1/24/87	Southern	64-56
2/6/87	Fort Hays	74-60
1/30/88	Fort Hays	63-53
2/19/88	Fort Hays	61-59
1/20/89	Fort Hays	75-61
2/18/89	Southern	70-68
1/20/07	Fort Hays	86-69
2/3/07	Southern	70-61
1/26/07	Fort Hays	59-70

INSIDE THE SERIES

Fort Hays leads 18-11
 Lions at home: 8-6
 Lions on the road: 3-12
 Most points, MSSU: 95 (95-77), 2/3/84 at Joplin
 Most points, Fort Hays: 103 (103-81), 1/28/81 at Hays, Kan.
 Largest victory margin, MSSU: +21 (84-63), 2/16/85 at Joplin
 Largest victory margin, Fort Hays: +22 (103-81), 1/28/77 at Hays, Kan.
 Last road win, MSSU: 70-61, 2/3/07
 Last road win, Fort Hays: 86-69, 1/20/07
 Most consecutive wins, MSSU: 2, Jan. 21, 1984-Feb. 3, 1984 & Feb. 16, 1985-Jan. 31, 1986
 Most consecutive wins, Fort Hays: 4, Jan. 18, 1980-Feb. 21, 1981 & Feb. 6, 1987-Jan. 20, 1989

USA TODAY/ESPN TOP 25 DATE: 2/5/08

- Delta State University (Miss.) - 19-0
- Seattle Pacific University (Wash.) - 18-0
- University of North Dakota - 20-1
- University Of South Dakota - 19-1
- Concordia University, St. Paul (Minn.) - 20-1
- Drury University (Mo.) - 17-2
- Holy Family University (Penn.) - 19-0
- University Of Alaska Anchorage - 19-2
- Fort Lewis College (Colo.) - 20-1
- T10. Indiana University Of Pennsylvania - 20-3
- T10. University of West Georgia - 19-2
- West Texas A&M University - 16-3
- Valdosta State University (Ga.) - 18-3
- California State University, Chico - 17-4
- Arkansas Tech University - 17-3
- Stonehill College (Mass.) - 16-4
- Anderson University (S.C.) - 18-2
- Francis Marion University (S.C.) - 16-2
- Washburn University (Kan.) - 15-4
- Michigan Technological University - 17-4
- Fairmont State University (W. Va.) - 18-4
- Emporia State University (Kan.) - 14-5
- Franklin Pierce University (N.H.) - 17-4
- Minnesota State University, Mankato - 16-5
- Augustana College (S.D.) - 19-5

Receiving Votes: Missouri Southern State University, 25

MIAA PRESEASON POLL

	Pts
1. Emporia State (6)	78
2. Washburn (4)	76
3. Northwest Missouri State	58
4. Central Missouri	51
5. Missouri Southern	50
6. Missouri Western	42
7. Pittsburg State	34
8. Fort Hays State	22
Southwest Baptist	22
10. Truman	17

**Last Time vs. Fort Hays State
(Game 17) Jan. 26, 2008
Fort Hays State 70, Lions 59**

Hays, Kan. -- Naomi Bancroft made six three-pointers and scored a game-high 24 points to lead the Fort Hays State Lady Tigers to a 70-59 win over the Missouri Southern Lions in MIAA action Saturday afternoon (Jan. 26) in Hays, Kan.

The loss snaps the Lions' four-game winning streak and puts them at 4-4 in the MIAA and 13-4 overall. FHSU improves to 8-9 and 2-6 in conference play.

Even though the Lions never led in the first half, they managed to stay close and took their first lead of the game on an Ela Zawadka three to go up 39-37 with 16:08 remaining in the game.

The Lions' biggest lead of the day was three after Tyneshia Pierce snapped a 39-39 tie with a layup and then converted a free throw to put the Lions ahead 42-39.

Sheena Kuntzsch then tied the score with a trey, but Danielle DeVader immediately answered with a jumper that made it 44-42 Lions with 12:01 left.

But the Lady Tigers gained the lead for good with a 12-2 run that was sparked by eight points from Bancroft that put FHSU up 54-46 with 8:13 remaining.

The Lions hung around though as DeVader knocked in a pair of threes as part of an 11-5 spurt that pulled Southern to within two at 59-57 with exactly two minutes left in the contest.

However, FHSU put the game away with a game-ending 13-2 run to pull away for the victory.

Missouri Southern (13-4, 4-4 MIAA)

	FG	3-PT	FT	R	PF	A	TP
Pierce *	6-11	1-1	5-8	8	3	0	18
Wood *	4-15	3-7	0-0	4	3	4	11
Zawadka *	3-8	2-7	0-0	3	0	4	8
DeVader *	5-10	3-8	0-0	5	4	1	13
Davis *	0-2	0-0	0-0	0	1	1	0
Bonner	0-0	0-0	0-0	0	0	0	0
Marquez	0-3	0-2	1-2	3	2	1	1
Hala'Api'Api	3-10	0-0	2-2	7	2	0	8
Helfrich	0-1	0-0	0-0	0	0	0	0
TOTALS	21-60	9-25	8-12	32	15	11	59
	.350	.360	.667				

Fort Hays State (8-9, 2-6 MIAA)

	FG	3-PT	FT	R	PF	A	TP
Willhite *	6-10	0-0	1-5	7	4	0	13
Kuntzsch *	1-9	1-4	4-4	9	2	4	7
Klug *	5-12	2-6	0-0	5	0	5	12
Bancroft *	7-19	6-17	4-4	3	1	1	24
Mason *	2-3	1-1	0-0	11	1	5	5
Biel	2-5	1-1	0-0	3	2	1	5
Cornett	2-3	0-0	0-0	2	0	2	4
Bessert	0-0	0-0	0-0	0	0	0	0
TOTALS	25-61	11-29	9-13	44	10	18	70
	.410	.379	.692				

Halftime: FHSU 35, MSSU 34; Turnovers: FHSU 13, MSSU 10; Steals: MSSU 7 (Hala'Api'Api 2), FHSU 6 (Bancroft 2); Blocked Shots: MSSU 3 (Pierce, Marquez, Hala'Api'Api), FHSU 2 (Biel 2).

TALE OF THE TAPE

MSSU	CATEGORY	FHSU
9th, 67.4	Scoring Offense	10th, 65.7
2nd, 57.5	Scoring Defense	4th, 66.3
4th, +9.9	Scoring Margin	8th, -0.7
5th, .435	Field Goal Percentage	10th, .389
2nd, .347	Three-Point FG Percentage	7th, .337
8th, 6.30	Three-Point FG Made/Game	7th, 6.55
9th, .692	Free Throw Percentage	10th, .663
1st, .341	Field Goal Pct. Defense	7th, .417
2nd, .286	Three-Point FG Pct. Defense	9th, .372
4th, 39.0	Rebounding Offense	6th, 38.5
3rd, 34.7	Rebounding Defense	4th, 34.8
3rd, +4.4	Rebounding Margin	4th, +3.7
9th, 14.15	Assists per Game	T-7th, 14.25
9th, 7.50	Steals per Game	2nd, 10.40
2nd, 4.05	Blocked Shots per Game	6th, 3.10
7th, +0.10	Turnover Margin	6th, 0.25
6th, 0.85	Assist-Turnover Ratio	10th, 0.71
5th, 13.25	Offensive Rebounds	1st, 15.50
T-4th, 25.80	Defensive Rebounds	8th, 23.05

MIAA rankings through games of Feb. 7

2007-08 STARTING FIVES

Pierce, Hala'api'api, Wood, Kantin, DeVader.....	3-0
Marquez, Hala'api'api, Wood, Kantin, Zawadka	2-0
Marquez, Pierce, Wood, Kantin, Zawadka	2-0
Wood, Kantin, DeVader, Helfrich, Pierce	1-0
Wood, Marquez, DeVader, Helfrich, Pierce.....	1-0
Henderson, Marquez, Zawadka, DeVader, Pierce.....	0-1
Wood, DeVader, Davis, Helfrich, Pierce.....	1-2
Zawadka, Pierce, Wood, DeVader, Davis	5-1
Marquez, Zawadka, DeVader, Davis, Pierce	0-1

THE LIONS RECORD WHEN ...

	2007-08	Under Mitts
Scoring 59 points or less	3-4	13-46
Scoring 60-69 points.....	5-0	41-24
Scoring 70-79 points.....	3-1	30-5
Scoring 80+ points	4-0	29-1
Allowing 59 points or less	8-1	63-8
Allowing 60-69 points	4-1	36-26
Allowing 70-79 points	2-3	11-31
Allowing 80+ points.....	1-0	3-11
Game decided by 3 pts. or less ..	3-1	20-10
Game decided by 4-9 pts.	4-0	31-24
Game decided by 10-19 pts.	4-4	30-27
Game decided by 20 or more....	4-0	32-16
Lead in rebounding.....	12-1	84-28
Trail in rebounding	3-3	27-40
Tie in rebounding.....	0-1	2-8
Have more turnovers	8-2	42-54
Have fewer turnovers.....	6-3	59-21
Tie in turnovers	1-0	12-1
Lead at halftime.....	12-0	86-14
Trail at halftime	2-5	22-56
Tied at halftime	1-0	5-6
Outshoot opponents (pct.).....	14-2	91-16
Opponent outshoots (pct.).....	1-3	21-59
Tie in shooting (pct.)	0-0	1-1
Make more free throws	2-0	62-15
Make less free throws	13-5	50-57
Tie in free throws.....	0-0	2-5
Make more threes	11-1	77-26
Make less threes	4-3	32-41
Tie in threes	0-1	5-9
Have more assists	11-2	80-16
Have fewer assists	4-2	29-56
Tie in assists.....	0-1	3-5
Have more steals	9-3	79-27
Have fewer steals.....	5-1	26-40
Tie in steals	1-1	8-10
Get more bench points	13-3	63-33
Get fewer bench points	1-0	44-39
Tie in bench points	1-2	6-4
Game goes into overtime	1-0	5-2
In November	5-0	29-5
In December.....	4-0	26-8
In January.....	5-4	30-32
In February.....	1-1	24-24
In March.....	0-0	0-6
vs. Nationally-Ranked Foes	2-1	8-25

THE 2007-08 LIONS AT-A-GLANCE

No.	Name	Pos.	Ht.	Yr.	Hometown/Previous School
2	Randi Henderson	G	5-4	So.	Urbana, Mo./Skyline HS
5	India Wood	G	5-7	Jr.	Decatur, Ala./Eastern Kentucky University
11	Ivaney Marquez	G	5-11	Jr.	Valencia, Venezuela/Grayson CC
13	Misti Johnson	G	5-6	Jr.	Gainsville, Mo./Mo Valley
15	Fatai Hala'Api'Api	C	6-1	Sr.	Maui, Hi./Eastern Kentucky University
20	Robin Kantin	G	5-8	Sr.	Silver Spring, Md./Radford (Va.) University
21	Ela Zawadka	G	5-11	Sr.	Torun, Poland/Frank Phillips
22	Danielle DeVader	G	5-9	Jr.	Holton, Kan./Holton HS
23	Lindsey Davis	G	5-8	Jr.	Wellington, Kan./Cowley CC
33	Nichole Helfrich	F	6-0	Jr.	Beech Grove, Ind./Missouri-St. Louis
42	Tynesha Pierce	F/C	6-0	Sr.	Houston, Texas/UT-Pan American
53	Brittany Vavao-Huggins	F	5-11	Fr.	Fayetteville, Ark./Fayetteville HS

Head Coach: Maryann Mitts

Assistant Coaches: Ronda Hubbard, Chris Kendrick, Tyrone Jones

THE DISH ON SOUTHERN (15-5, 6-5 MIAA)

The Missouri Southern Lions lost for only the second time in their last eight conference games with a 72-59 setback to the No. 19-ranked Washburn Lady Blues Wednesday night (Feb. 6) at the Leggett & Platt Athletic Center. The Lions led throughout much of the first half, but the Lady Blues took control of the contest with a 22-6 run that began late in the first half and continued through the first five minutes of the second half. Fatai Hala'Api'Api led the Lions with 19 points, including 11-of-13 from the free-throw line. Danielle DeVader played a solid all-around game with 15, along with 4-of-8 shooting from beyond the arc. DeVader also led the Lions with seven rebounds.

Fatai Hala'Api'Api currently leads the Lions with 12.3 ppg and is tied for the team-lead with 6.0 rpg. Fatai has also shot a team-best 56.6 percent from the field and has blocked a team-high 29 shots. Tynesha Pierce averages 11.5 ppg and also averages 6.0 rpg and leads the Lions with 25 steals. Robin Kantin averages 10.5 ppg but has missed the past 12 contests with a leg injury. India Wood is fourth on the team in scoring with 10.4 ppg, along with a team-high 78 assists this season.

THE DISH ON THE LADY TIGERS (9-10, 3-7 MIAA)

The Fort Hays State Lady Tigers lost their sixth game in the last eight tries on Thursday night, falling at Pittsburg State, 62-60

Brianna Willhite leads FHSU with 13.6 ppg, while Sheena Kuntzsch scores 13.1 a game and leads in rebounding with 7.0 rpg. Naomi Bancroft averages 12.4 ppg and is the Lady Tigers' top threat from three-point distance, shooting 37.3 percent (66-of-177) from beyond the arc. Meshia Mason leads the Lady Tigers with 80 assists and 42 steals.

THE SERIES

Fort Hays won the first meeting this season 70-59 in Hays, Kan. to take an 18-11 advantage in the all-time series. The two schools faced off last year for the first time since the 1988-89 season and split a pair of meetings, with the road team winning each contest. The Lions are 8-6 vs. FHSU in Joplin.

BOARD WORK IS THE KEY

Under head coach Maryann Mitts, the Missouri Southern Lions have proved that rebounding the basketball is a huge key to victory. The Lions are 12-1 this year when out-rebounding their opponent and an incredible 84-28 overall under Mitts. But the Lions are just 3-3 this year and 27-40 in the Mitts era when the opponent holds the rebounding edge.

DEFYING THE ODDS

Normally when a team commits more turnovers than their opponent, it usually means disaster thanks to extra possessions and often easy baskets allowed. But this season the Lions have been the exception to the rule, as they are an unbelievable 8-2 when they have more turnovers and 6-3 when they win the turnover battle.

STATISTICAL PACE-SETTERS

The Missouri Southern Lions are a force to be reckoned with, particularly on defense. The Lions currently lead the MIAA in field-goal percentage defense (.341) and are second in scoring defense (.575 ppg), three-point field-goal percentage defense (.286), blocked shots (4.05 bpg) and three-point percentage (.347). The Lions rank third in rebounding defense (34.7) and rebounding margin (+4.4 rpg).

Individually, India Wood is fifth in assists (3.90 apg) and is seventh in assist/turnover ratio (1.50). Fatai Hala'Api'Api is second in the MIAA in blocks (1.45 bpg) and Danielle DeVader is ninth in the league in three-point percentage (.365).

Through games of Feb. 3, the Lions currently rank 10th in all of NCAA Division II in field-goal percentage defense and are 25th in scoring defense. The Lions are tied for 36th as a team in blocked shots.

UP NEXT

Missouri Southern hits the road for a matchup with current No. 22-ranked Emporia State on Wednesday night (Feb. 13) at 5:30 p.m. in Emporia, Kan. The Lions bested the Lady Hornets in the first meeting this year 90-71 (Jan. 23) in Joplin.

Missouri Southern Basketball
 Missouri Southern Season Box Score (as of Feb 06, 2008)
 All games

RECORD:	OVERALL	HOME	AWAY	NEUTRAL
ALL GAMES.....	(15-5)	(6-3)	(6-2)	(3-0)
CONFERENCE.....	(6-5)	(3-3)	(3-2)	(0-0)
NON-CONFERENCE.....	(9-0)	(3-0)	(3-0)	(3-0)

##	Player	GP-GS	Min--Avg	---TOTAL---		---3-PTS---		FT-FTA	Pct	----REBOUNDS----				PF	FO	A	TO	Blk	Stl	Pts	Avg
				FG-FGA	Pct	3FG-FGA	Pct			Off	Def	Tot	Avg								
15	Hala'Api'Api,Fatai.	20-5	400 20.0	98-173	.566	0-0	.000	50-79	.633	51	68	119	6.0	61	4	10	42	29	10	246	12.3
42	Pierce,Tynesha....	20-18	392 19.6	97-188	.516	7-14	.500	29-46	.630	57	62	119	6.0	68	5	11	29	15	25	230	11.5
20	Kantin,Robin.....	8-8	205 25.6	28-67	.418	10-28	.357	18-24	.750	12	18	30	3.8	10	0	22	16	1	5	84	10.5
05	Wood,India.....	20-18	641 32.0	73-176	.415	29-74	.392	33-52	.635	2	66	68	3.4	35	0	78	52	0	21	208	10.4
21	Zawadka,Ela.....	20-12	516 25.8	47-123	.382	20-68	.294	15-20	.750	17	63	80	4.0	27	0	24	39	3	6	129	6.5
10	Bonner,Trice.....	15-0	219 14.6	29-81	.358	15-35	.429	19-23	.826	14	31	45	3.0	31	0	12	27	6	17	92	6.1
22	DeVader,Danielle..	20-16	490 24.5	35-96	.365	31-85	.365	19-22	.864	14	53	67	3.4	44	0	33	25	3	16	120	6.0
23	Davis,Lindsey.....	13-10	272 20.9	24-57	.421	2-6	.333	22-28	.786	9	21	30	2.3	32	1	26	33	2	9	72	5.5
11	Marquez,Ivaney....	20-7	351 17.6	28-95	.295	11-47	.234	8-15	.533	38	35	73	3.7	23	0	31	24	11	15	75	3.8
33	Helfrich,Nichole..	18-5	289 16.1	19-41	.463	0-0	.000	25-31	.806	30	28	58	3.2	51	1	12	20	8	17	63	3.5
13	Johnson,Misti.....	3-0	23 7.7	4-8	.500	0-2	.000	0-0	.000	0	1	1	0.3	4	0	0	2	0	2	8	2.7
53	Vavao-Huggins,Britt	7-0	41 5.9	3-8	.375	0-0	.000	0-2	.000	1	7	8	1.1	5	0	3	2	1	2	6	0.9
02	Henderson,Randi....	19-1	186 9.8	7-17	.412	1-4	.250	0-2	.000	2	15	17	0.9	18	0	21	16	2	5	15	0.8
TEAM.....										18	48	66	3.3	0		4					
Total.....		20	4025	492-1130	.435	126-363	.347	238-344	.692	265	516	781	39.0	409	11	283	331	81	150	1348	67.4
Opponents.....		20	4025	364-1069	.341	112-392	.286	310-453	.684	261	432	693	34.7	329	4	206	333	28	102	1150	57.5

DATE	TIME	OPPONENT	SCORE	ATTEND	HIGH POINTS	HIGH REBOUNDS
11/16/07	5:30 p.m.	1 at St. Edward's	W <u>60-39</u>	297	(18)Kantin,Robin	(8)Kantin,Robin
11/17/07	1:00 p.m.	vs Incarnate Word	W <u>52-43</u>	128	(12)Bonner,Trice	(7)Pierce,Tynesha
11/23/07	5:30 pm CST	vs Saint Mary (Kan.)	W <u>66-29</u>	100	(19)Hala'Api'Api,Fatai	(12)Hala'Api'Api,Fatai
11/24/07	5:30 pm CST	vs Quincy	W <u>83-51</u>	110	(19)Hala'Api'Api,Fatai	(12)Hala'Api'Api,Fatai
11/28/07	6 PM	WEBSTER UNIVERSITY	W <u>86-36</u>	1125	(17)Bonner,Trice	(9)Pierce,Tynesha
12/1/07	1 PM	ST. EDWARD'S	W <u>60-42</u>	225	(16)Marquez,Ivaney	(7)Marquez,Ivaney
12/7/07	7 PM	at Okla. Panhandle State	W <u>59-44</u>		(18)Kantin,Robin	(10)Pierce,Tynesha
12/17/07	6:00 pm	at Northeastern State	W <u>70-62</u>	400	(13)Zawadka,Ela	(8)Hala'Api'Api,Fatai
12/19/07	7 PM	EVANGEL	W <u>79-62</u>	406	(27)Hala'Api'Api,Fatai	(10)Pierce,Tynesha
1/2/08	5:30 pm	* at Truman State Univ.	<u>55-68</u> L	285	(12)Helfrich,Nichole	(11)Zawadka,Ela
1/5/08	5:30 PM	* MISSOURI WESTERN	<u>72-74</u> L	1137	(26)Hala'Api'Api,Fatai	(9)Pierce,Tynesha
1/9/08	5:30 PM	* PITTSBURG STATE	<u>44-54</u> L	1642	(13)Wood,India	(7)Hala'Api'Api,Fatai
01/12/08	1:30 p.m.	* at Central Missouri	W <u>85-82</u>	1300	(22)Wood,India	(6)Pierce,Tynesha
01/16/08	5:30 p.m.	* at NW Missouri State	W <u>65-64</u>	1008	(13)Wood,India	(6)Hala'Api'Api,Fatai
1/19/08	5:30 PM	* SOUTHWEST BAPTIST	W <u>58-55</u>	1979	(16)Hala'Api'Api,Fatai	(10)Marquez,Ivaney
1/23/08	5:30 PM	* EMPORIA STATE	W <u>90-71</u>	1176	(16)Hala'Api'Api,Fatai	(12)Hala'Api'Api,Fatai
01/26/08	3:00 p.m.	* at Fort Hays State	W <u>59-70</u> L	1375	(24)Wood,India	(8)Pierce,Tynesha
01/30/08	5:30 p.m.	* at Washburn	W <u>69-61</u>	2003	(18)Pierce,Tynesha	(8)Pierce,Tynesha
2/2/08	1:00 PM	* TRUMAN STATE UNIV.	WOT <u>77-71</u>	1100	(17)Pierce,Tynesha	(7)Davis,Lindsey
2/6/08	5:30 PM	* WASHBURN	<u>59-72</u> L	1100	(17)Hala'Api'Api,Fatai	(7)Hala'Api'Api,Fatai

* = Conference game

ATTENDANCE SUMMARY	GAMES	TOTALS	AVG/GAME
HOME.....	9	9890	1099
AWAY.....	8	6668	834
NEUTRAL.....	3	338	113
TOTAL.....	20	16896	845

THE 2007-08 LIONS



2007-08 SEASON HIGHS

Points: 15, two times, last vs. Washburn, 2-6-08
 Rebounds: 9, vs. Truman State, 2-2-08
 Field Goals: 5, two times, last at Fort Hays State, 1-26-08
 3-Point FG: 5, at Central Missouri, 1-12-08
 Free Throws Made: 10, vs. Emporia State, 1-23-08
 Assists: 6, vs. Missouri Western, 1-5-08
 Steals: 3, vs. Truman State, 2-2-08

22-Danielle DeVader
 5-9 • Jr. •
 Guard
 Holton, Kan.

CAREER HIGHS

Points: 18, two times, last vs. Ozark Christian, 12-06-05
 Rebounds: 9, three times, last vs. Truman State, 2-2-08
 Field Goals: 6, three times, last vs. Panhandle State, 11-29-06
 3-Point FG: 6, vs. Ozark Christian, 12-06-05
 Free Throws Made: 10, vs. Emporia State, 1-23-08
 Assists: 6, vs. Missouri Western, 1-5-08
 Steals: 4, vs. Newman, 11-25-06

SEASON STATS								
GP/S	Pts.-Avg.	FG-A	3FG-A	FT-A	Reb.-Avg.	Ast.	Blk.	Stl.
20/16	120-6.0	35-96	31-85	19-22	67-3.4	33	3	16
		.365	.365	.864				

CAREER STATS								
GP/S	Pts.-Avg.	FG-A	3FG-A	FT-A	Reb.-Avg.	Ast.	Blk.	Stl.
59/40	451-7.6	139-347	110-281	63-70	203-3.4	88	15	49
		.401	.391	.900				



2007-08 SEASON HIGHS

Points: 22, vs. Emporia State, 1-23-08
 Rebounds: 10, two times, last vs. Evangel, 12-19-07
 Field Goals Made: 7, four times, last at Washburn, 1-30-08
 3-Point FG Made: 2, vs. St. Edward's, 12-1-07
 Free Throws Made: 8, vs. Emporia State, 1-23-08
 Assists: 2, four times, last vs. Missouri Western, 1-5-08
 Steals: 4, at Northwest Missouri State, 1-16-08

42-TYNESHA PIERCE
 6-0, Sr., Forward/
 Center
 Houston, Texas

CAREER HIGHS

Points: 26, vs. Evangel, 11-24-06
 Rebounds: 13, vs. Pittsburg State, 2-21-07
 Field Goals Made: 11, vs. Evangel, 11-24-06
 3-Point FG Made: 2, vs. St. Edward's, 12-1-07
 Free Throws Made: 8, vs. Emporia State, 1-23-08
 Assists: 2, four times, last vs. Missouri Western, 1-5-08
 Steals: 4, two times, last at Northwest Missouri State, 1-16-08

SEASON STATS								
GP/S	Pts.-Avg.	FG-A	3FG-A	FT-A	Reb.-Avg.	Ast.	Blk.	Stl.
20/18	230-11.5	97-188	7-14	29-46	119-6.0	11	15	25
		.516	.500	.630				

CAREER STATS								
GP/S	Pts.-Avg.	FG-A	3FG-A	FT-A	Reb.-Avg.	Ast.	Blk.	Stl.
47/40	567-12.1	233-466	7-14	94-121	285-6.1	26	55	64
		.500	.500	.777				



2007-08 SEASON HIGHS

Points: 18, two times, last vs. Panhandle State, 12-7-07
 Rebounds: 8, two times, last vs. St. Mary's (Kan.), 11-23-07
 Field Goals: 7, vs. St. Edward's, 11-16-07
 3-Point FG: 3, vs. Panhandle State, 12-7-07
 Free Throws Made: 4, two times, last vs. Quincy, 11-24-07
 Assists: 5, two times, last vs. St. Mary's (Kan.), 11-23-07
 Steals: 2, vs. St. Edward's, 12-1-07

20-Robin Kantin
 5-8 • Sr. •
 Guard
 Silver Spring, Md.

CAREER HIGHS

Points: 20, two times, last vs. Central Methodist, 11-21-06
 Rebounds: 12, two times, last vs. Mo. Western, 1-28-06
 Field Goals: 10, vs. Newman (Kan.), 11-30-05
 3-Point FG: 5, at Fort Hays State, 2-3-07
 Free Throws Made: 9, vs. Missouri Western, 1-28-06
 Assists: 6, at Truman State, 1-7-06
 Steals: 6, at East Central, 12-20-05

SEASON STATS								
GP/S	Pts.-Avg.	FG-A	3FG-A	FT-A	Reb.-Avg.	Ast.	Blk.	Stl.
8/8	84-10.5	28-67	10-28	18-24	30-3.8	22	1	5
		.418	.357	.750				

CAREER STATS								
GP/S	Pts.-Avg.	FG-A	3FG-A	FT-A	Reb.-Avg.	Ast.	Blk.	Stl.
63/61	695-11.0	227-546	39-122	200-274	331-5.3	165	9	76
		.416	.320	.730				



2007-08 SEASON HIGHS

Points: 27, vs. Evangel, 12-19-07
 Field Goals 12, vs. Missouri Western, 1-5-08
 3-Point FG Made: None
 Free Throws Made: 11, vs. Washburn, 2-6-08
 Rebounds: 12, three times, last vs. Southwest Baptist, 1-19-08
 Assists: 2, at Washburn, 1-30-08
 Steals: 2, three times, last at Fort Hays State, 1-26-08

15-FATALA HALA'API'API
 6-1, Sr., Center
 Lahaina, Hawaii

CAREER HIGHS

Points: 27, vs. Evangel, 12-19-07
 Field Goals 12, vs. Missouri Western, 1-5-08
 3-Point FG Made: None
 Free Throws Made: 11, vs. Washburn, 2-6-08
 Rebounds: 14, vs. Central Missouri, 1-6-07
 Assists: 3, vs. Emporia State, 2-7-07
 Steals: 2, seven times, last at Fort Hays State, 1-26-08

SEASON STATS								
GP/S	Pts.-Avg.	FG-A	3FG-A	FT-A	Reb.-Avg.	Ast.	Blk.	Stl.
20/5	246-12.3	98-173	0-0	50-79	119-6.0	10	29	10
		.566	.000	.633				

CAREER STATS								
GP/S	Pts.-Avg.	FG-A	3FG-A	FT-A	Reb.-Avg.	Ast.	Blk.	Stl.
39/17	450-11.5	185-337	0-0	80-130	227-5.8	20	59	27
		.549	.000	.615				



2007-08 SEASON HIGHS

Points: 5, at Truman, 1-2-08
 Field Goals 2, two times, last at Truman, 1-2-08
 3-Point FG Made: 1, at Truman, 1-2-08
 Free Throws Made: None
 Rebounds: 4, vs. Quincy, 11-24-07
 Assists: 4, vs. St. Mary's (Kan.), 11-23-07
 Steals: 3, vs. St. Edward's, 12-1-07

2-RANDI HENDERSON
 5-4, So., Guard
 Urbana, Mo

CAREER HIGHS

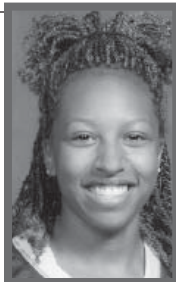
Points: 5, at Truman, 1-2-08
 Field Goals 2, two times, last at Truman, 1-2-08
 3-Point FG Made: 1, two times, last at Truman, 1-2-08
 Free Throws Made: 2, two times, last vs. Southwest Baptist, 2-10-07
 Rebounds: 4, vs. Quincy, 11-24-07
 Assists: 4, two times, last vs. St. Mary's (Kan.), 11-23-07
 Steals: 3, vs. St. Edward's, 12-1-07

SEASON STATS

GP/S	Pts.-Avg.	FG-A	3FG-A	FT-A	Reb.-Avg.	Ast.	Blk.	Stl.
19/1	15-0.8	7-17	1-4	0-2	17-0.9	21	2	5
		.412	.250	.000				

CAREER STATS

GP/S	Pts.-Avg.	FG-A	3FG-A	FT-A	Reb.-Avg.	Ast.	Blk.	Stl.
41/1	24-0.6	9-30	2-14	4-6	27-0.7	37	5	14
		.300	.143	.667				



2007-08 SEASON HIGHS

Points: 24, vs. Emporia State, 1-23-08
 Field Goals 8, vs. Emporia State, 1-23-08
 3-Point FG Made: 6, at Central Missouri, 1-12-08
 Free Throws Made: 7, vs. Pittsburg State, 1-9-08
 Rebounds: 9, vs. Panhandle State, 12-7-07
 Assists: 9, vs. Evangel, 12-19-07
 Steals: 5, vs. Truman State, 2-2-08

5- INDIA WOOD
 5-7, Jr., Guard
 Decatur, Ala.

CAREER HIGHS

Points: 24, vs. Emporia State, 1-24-08
 Field Goals 8, vs. Emporia State, 1-24-08
 3-Point FG Made: 6, at Central Missouri, 1-12-08
 Free Throws Made: 7, vs. Pittsburg State, 1-9-08
 Rebounds: 9, vs. Panhandle State, 12-7-07
 Assists: 9, vs. Evangel, 12-19-07
 Steals: 5, vs. Truman State, 2-2-08

SEASON STATS

GP/S	Pts.-Avg.	FG-A	3FG-A	FT-A	Reb.-Avg.	Ast.	Blk.	Stl.
20/18	208-10.4	73-176	29-74	33-52	68-3.4	78	0	21
		.415	.392	.635				

CAREER STATS

GP/S	Pts.-Avg.	FG-A	3FG-A	FT-A	Reb.-Avg.	Ast.	Blk.	Stl.
39/20	272-7.0	96-251	40-111	40-65	101-2.6	127	2	32
		.382	.360	.619				



2007-08 SEASON HIGHS

Points: 14, vs. Missouri Western, 1-5-08
 Rebounds: 11, at Truman, 1-2-08
 Field Goals Made: 5, four times, last vs. Missouri Western, 1-5-08
 3-Point FG Made: 4, vs. Missouri Western, 1-5-08
 Free Throws Made: 4, at Central Missouri, 1-12-08
 Assists: 4, two times, last at Washburn, 1-30-08
 Steals: 2, at Truman, 1-2-08

21-ELA ZAWADKA
 5-11, Sr.,
 Guard
 Torun, Poland

CAREER HIGHS

Points: 15, at Central Missouri, 2-14-07
 Rebounds: 11, at Truman, 1-2-08
 Field Goals Made: 6, at Central Missouri, 2-14-07
 3-Point FG Made: 4, vs. Missouri Western, 1-5-08
 Free Throws Made: 4, at Central Missouri, 1-12-08
 Assists: 4, two times, last at Washburn, 1-30-08
 Steals: 3, vs. Truman, 12-9-06

SEASON STATS

GP/S	Pts.-Avg.	FG-A	3FG-A	FT-A	Reb.-Avg.	Ast.	Blk.	Stl.
20/12	129-6.5	47-123	20-68	15-20	80-4.0	24	3	6
		.382	.294	.750				

CAREER STATS

GP/S	Pts.-Avg.	FG-A	3FG-A	FT-A	Reb.-Avg.	Ast.	Blk.	Stl.
47/16	278-5.9	102-262	42-139	27-43	157-3.3	48	8	22
		.389	.302	.628				



2007-08 SEASON HIGHS

Points: 16, vs. St. Edward's, 12-1-07
 Field Goals Made: 7, vs. St. Edward's, 12-1-07
 3-Point FG Made: 2, two times, last vs. St. Mary's (Kan.), 11-23-07
 Free Throws Made: 3, vs. St. Edward's, 11-16-07
 Rebounds: 10, at Northwest Missouri State, 1-16-08
 Assists: 4, two times, last vs. Southwest Baptist, 1-19-08
 Steals: 2, two times, last vs. St. Edward's, 12-1-07

11-IVANEY MARQUEZ
 5-11, Jr., Guard
 Valencia, Venezuela

SEASON STATS

GP/S	Pts.-Avg.	FG-A	3FG-A	FT-A	Reb.-Avg.	Ast.	Blk.	Stl.
20/7	75-3.8	28-95	11-47	8-15	73-3.7	31	11	15
		.295	.234	.533				



2007-08 SEASON HIGHS

Points: 4, vs. St. Mary's (Kan.), 11-23-07
 Field Goals Made: 2, vs. St. Mary's (Kan.), 11-23-07
 3-Point FG Made: N/A
 Free Throws Made: N/A
 Rebounds: 1, vs. Webster, 11-28-07
 Assists: N/A
 Steals: 2, vs. Webster, 11-28-07

13-MISTI JOHNSON
 5-6, Jr., Guard
 Gainsville, Mo.

SEASON STATS

GP/S	Pts.-Avg.	FG-A	3FG-A	FT-A	Reb.-Avg.	Ast.	Blk.	Stl.
3/0	8-2.7	4-8	0-2	0-0	1-0.3	0	0	2
		.500	.000	.000				



2007-08 SEASON HIGHS

Points: 15, vs. Southwest Baptist, 1-19-08
 Field Goals Made: 6, vs. Southwest Baptist, 1-19-08
 3-Point FG Made: 1, two times, last at Washburn, 1-30-08
 Free Throws Made: 5, at Washburn, 1-30-08
 Rebounds: 7, at Washburn, 1-30-08
 Assists: 5, two times, last vs. Washburn, 2-6-08
 Steals: 3, at Northwest Missouri State, 1-16-08

23-LINDSAY DAVIS
 5-8, Jr., Guard
 Wellington, Kan.

SEASON STATS

GP/S	Pts.-Avg.	FG-A	3FG-A	FT-A	Reb.-Avg.	Ast.	Blk.	Stl.
13/10	72-5.5	24-57	2-6	22-28	30-2.3	26	2	9
		.421	.333	.786				



2007-08 SEASON HIGHS

Points: 12, at Truman, 1-2-08
 Field Goals Made: 3, two times, last at Washburn, 1-30-08
 3-Point FG Made: None
 Free Throws Made: 6, at Truman, 1-2-08
 Rebounds: 8, vs. Webster, 11-28-07
 Assists: 2, four times, last at Central Missouri, 1-12-08
 Steals: 2, five times, last at Washburn, 1-30-08

33-NICHOLE HELFRICH
 6-0, Jr., Forward
 Beech Grove, Ind.

SEASON STATS

GP/S	Pts.-Avg.	FG-A	3FG-A	FT-A	Reb.-Avg.	Ast.	Blk.	Stl.
18/5	63-3.5	19-41	0-0	25-31	58-3.2	12	8	17
		.463	.000	.806				



2007-08 SEASON HIGHS

Points: 4, vs. Webster, 11-28-07
 Field Goals Made: 2, vs. Webster, 11-28-07
 3-Point FG Made: None
 Free Throws Made: None
 Rebounds: 3, two times, last vs. Webster, 11-28-07
 Assists: 1, three times, last at Truman, 1-2-08
 Steals: 1, two times, last vs. Truman State, 2-2-08

53-BRITTANY VAVAO-HUGGINS
 5-11, Fr., Forward
 Fayetteville, Ark.

SEASON STATS

GP/S	Pts.-Avg.	FG-A	3FG-A	FT-A	Reb.-Avg.	Ast.	Blk.	Stl.
7/0	6-0.9	3-8	0-0	0-2	8-1.1	3	1	2
		.375	.000	.000				

Game 1 • Nov. 16, 2007
Lions 60, St. Edward's 39

AUSTIN, TEXAS -- The Missouri Southern Lions used a stifling defensive effort and a game-high 18 points from senior Robin Kantin (Silver Spring, Md.) to record a season-opening 60-39 win over the St. Edward's Hilltoppers at the St. Edward's Shootout Friday night (Nov. 16) in Austin, Texas.

MSSU took charge with a 9-0 run to begin the second to expand a seven-point edge into a 16-point cushion with 16:29 remaining in the game.

Whitney Regian sparked an 8-2 run for the Hilltoppers by hitting a pair of free throws and a three-pointer that cut the lead to 10 with 14:09 left.

The Lions responded with a 14-4 burst over the next 6:47 to go up by 20 at 48-28 with just 7:22 left. Trice Bonner (Mobile, Ala.) and India Wood (Decatur, Ala.) each scored five points in that span to key the big run. The Lions maintained at least a 15 point lead the remainder of the contest.

MSSU (1-0) scored the game's first five points and led 9-3 at the 13:38 point of the first half. The Hilltoppers (0-1) then hit six free throws, four by Regian to gain its only lead of the game at 10-9 with 9:56 remaining in the opening half.

The Lions' suffocating defense held St. Edward's to only one field goal in the first half on only 5.6 percent shooting (1-of-18). But turnovers and foul trouble led to the Hilltoppers making 13-of-22 from the charity stripe and trailing only 23-16 at the half.

Missouri Southern (1-0)

	FG	3-PT	FT	R	PF	A	TP
Marquez *	2-5	2-3	3-4	2	1	3	9
Hala'api'api *	1-2	0-0	1-2	3	4	1	3
Wood *	3-8	1-3	0-0	5	1	2	7
Kantin *	7-7	2-2	2-2	8	2	4	18
Zawadka *	0-2	0-1	0-0	0	2	0	0
Henderson	0-0	0-0	0-0	0	1	2	0
Bonner	3-5	1-1	4-4	5	4	0	11
DeVader	0-0	0-0	0-0	0	3	0	0
Helfrich	1-2	0-0	0-0	5	4	0	2
Pierce	5-9	0-1	0-1	6	3	1	10
TOTALS	22-47	6-11	10-13	38	25	13	60
	.550	.545	.769				

St. Edward's (0-1)

	FG	3-PT	FT	R	PF	A	TP
Bartosh *	1-3	1-2	3-6	3	2	2	6
Sumler *	1-4	0-1	1-6	0	3	0	3
Tidwell *	3-12	0-4	4-4	0	2	1	10
Head *	0-2	0-0	0-0	4	3	0	0
Regian *	1-4	1-2	8-9	5	1	0	11
Lara	0-1	0-0	0-0	1	1	0	0
Nagel	0-1	0-1	0-0	0	1	2	0
Etheridge	1-5	0-2	0-1	0	0	1	2
Payton	1-4	0-1	0-0	2	0	0	2
White	0-2	0-0	3-4	0	3	0	3
Starr	0-2	0-0	0-2	0	0	0	0
Rowland	1-1	0-0	0-0	0	0	0	2
Saathoff	0-1	0-0	0-0	0	1	0	0
TOTALS	9-42	2-13	19-32	18	17	6	39
	.214	.154	.594				

Halftime: MSSU 23, STEU 16; Turnovers: MSSU 28, STEU 19; Steals: MSSU 8 (Bonner 3), STEU 6 (Bartosh, Lara 2); Blocked Shots: MSSU 4 (Marquez, Kantin, Henderson, Helfrich), STEU 0.

Game 2 • Nov. 17, 2007
Lions 52, Incarnate Word 43

Austin, Texas -- The Missouri Southern women's basketball team took a lead just two minutes into the second half on a layup from Tynesha Pierce and wouldn't trail then on out, defeating Incarnate Word today, 52-43 in the team's final game at the St. Edwards University Classic in Austin.

Southern (2-0) scored the game's first points on a bucket from Fatai Hala'Api'Api in the game's first possession.

A layup from UIW's (1-1) Kim Robinson at the 16 minute mark, however, gave the Cardinals a six point lead at 10-4.

The Lions re-took the lead at 21-20 on a layup from Robin Kantin with five minutes left. Three's from Danielle DeVader, first at the three minute mark and another with just over a minute left gave the Lions a one point advantage each time, however, a free throw from UIW's Kava Cinnamon with 22 seconds left, gave the Cardinals a one point lead at the half.

Pierce tied the game at 30 with a free-throw to start the second half and her bucket just two minutes in gave the Lions a lead they wouldn't relinquish. The lead was as big as 11, after a free throw from Trice Bonner with 22 seconds remaining, one of six she made in the final 46 seconds.

Missouri Southern (2-0)

	FG	3-PT	FT	R	PF	A	TP
Hala'api'api *	2-2	0-0	1-2	2	5	0	5
Zawadka *	2-4	0-2	1-2	2	0	0	5
Wood *	1-6	1-4	0-0	1	4	6	3
Marquez *	0-1	0-1	0-0	0	0	0	0
Kantin *	3-8	1-4	4-4	2	1	5	11
Henderson	0-0	0-0	0-0	2	0	0	0
Bonner	2-3	2-2	6-6	4	3	0	12
DeVader	2-5	2-5	0-0	5	1	2	6
Helfrich	0-1	0-0	0-0	6	4	0	0
Pierce	4-12	0-0	2-4	7	4	1	10
TOTALS	16-42	6-18	14-18	34	22	14	52
	.381	.333	.778				

Incarnate Word (1-1)

	FG	3-PT	FT	R	PF	A	TP
Harvey *	1-6	0-0	4-8	5	5	0	6
Hardy *	4-7	0-1	4-7	6	2	3	12
Robinson *	2-7	0-4	0-0	5	1	2	4
Torru *	4-13	1-7	0-0	4	2	3	9
Kava *	0-4	0-4	3-4	2	1	0	3
Sledge	0-1	0-1	0-0	2	1	1	0
Greenwood	1-3	1-2	1-2	1	1	0	4
Holden	2-2	0-0	1-2	1	3	0	5
TOTALS	14-43	2-19	13-23	28	16	9	43
	.326	.105	.565				

Halftime: UIW 30, MSSU 29; Turnovers: MSSU 18, UIW 13; Steals: UIW 6 (Harvey, Hardy 2), MSSU 5 (Helfrich 2); Blocked Shots: MSSU 2 (Hala'api'api, Pierce), UIW 2 (Harvey 2).

Game 3 • Nov. 23, 2007
Lions 66, St. Mary's (Kan.) 29

Pittsburg, Kan. - The Missouri Southern Lions held the St. Mary's (Kan.) Spires to a four-percent (1-of-25) shooting percentage in the first half and rolled to a 66-29 win in action at the Pittsburg State Pizza Hut/Comfort Inn Classic Friday night (Nov. 23) in Pittsburg, Kan.

The Lions (3-0) roared out of the gate as seniors Fatai Hala'api'api (Maui, Hawaii) and Tynesha Pierce (Houston, Texas) combined for 14 points in a 15-0 MSSU spurt to begin the game.

The Spires' (3-3) followed that with their lone field goal of the first half that came on a jumper by Jamie Mireles at the 9:39 mark.

Southern then went on a 16-3 run that featured a pair of treys by Trice Bonner (Mobile, Ala.) that put the Lions on top 31-5 with 2:34 remaining in the first half.

The Lions went on to lead 38-7 at halftime

A three-pointer by Ivaney Marquez (Valencia, Venezuela) and a free throw from Fatai gave the Lions their largest lead to that point at 42-7 just 3:10 into the second half.

Katie Joens then scored seven points in a 9-4 St. Mary's run to pull the Spires within 30 with 13:47 left, but the Lions gained their biggest lead of the night with a 16-4 burst that was capped by a three-pointer from Bonner to go ahead 62-20 with 3:43 left.

Missouri Southern (3-0)

	FG	3-PT	FT	R	PF	A	TP
Marquez *	2-6	2-6	0-0	2	2	2	6
Pierce *	7-15	0-0	0-0	6	3	0	14
Wood *	2-7	0-2	1-1	3	1	1	5
Kantin *	2-11	0-1	1-3	8	0	5	5
Zawadka *	0-1	0-0	0-0	7	2	0	0
Henderson	0-3	0-1	0-0	3	0	4	0
Bonner	3-7	3-4	2-2	2	2	2	11
Johnson	2-3	0-1	0-0	0	1	0	4
Hala'api'api	6-11	0-0	7-8	12	0	0	19
DeVader	0-2	0-2	0-0	1	3	1	0
Helfrich	1-2	0-0	0-0	2	3	2	2
Vavao-Huggins	0-2	0-0	0-0	0	1	1	0
TOTALS	25-70	5-17	11-14	50	18	18	66
	.357	.294	.786				

St. Mary's (Kan.) (3-3)

	FG	3-PT	FT	R	PF	A	TP
Helm *	1-6	0-1	2-4	7	1	0	4
Leonard *	1-11	0-1	6-6	5	4	0	8
Teal *	0-1	0-0	0-0	1	0	0	0
Jacobs *	0-0	0-0	0-0	0	2	0	0
Gillispie *	0-5	0-4	0-0	2	2	0	0
Todd	0-0	0-0	0-0	1	1	0	0
Joens	2-5	1-2	4-4	1	3	2	9
Mireles	1-10	0-5	2-2	3	0	0	4
Shea	0-1	0-1	0-0	1	1	1	0
Packham	0-1	0-0	0-0	1	1	0	0
Garcia	2-9	0-0	0-0	7	1	0	4
TOTALS	7-49	1-14	14-16	38	16	3	29
	.326	.105	.565				

Halftime: MSSU 38, St.Mary's 7; Turnovers: St. Mary's 27, MSSU 14; Steals: MSSU 5 (Pierce 3), St.Mary's 3 (Leonard 2); Blocked Shots: MSSU 6 (Hala'api'api 5), St. Mary's 1 (Shea).

Game 4 • Nov. 24, 2007
Lions 83, Quincy 51

Pittsburg, Kan. - Fatai Hala'api'api (Maui, Hawaii) shot a perfect 9-of-9 from the field and scored 19 points and pulled down 12 rebounds to lead the Missouri Southern Lions to a 4-0 start with an 83-51 win over the Quincy Lady Hawks in the final night of the Pittsburg State Pizza Hut/Comfort Inn Classic Saturday night (Nov. 24) in Pittsburg, Kan.

The game was close through much of the first half but the Lions took control with an 18-4 run to snap a 13-13 tie and surge ahead 31-17 with 34 seconds left in the first half.

India Wood (Athens, Ala.) and Danielle DeVader (Holton, Kan.) combined for 14 points during that span, with Wood hitting a trey and converting a three-point play and DeVader knocking in a pair of threes in that stretch. The Lions led 31-18 at the half.

MSSU expanded the lead in the second half behind a 61.3 percent (19-of-31) offensive explosion from the field.

The Lions outscored the Lady Hawks 19-10 to begin the second half and led 50-28 with 14:56 remaining after Fatai converted consecutive field goals.

Southern later went on a 10-0 run to turn a 20-point advantage into a commanding 66-36 lead with 8:52 left in the second half. The Lions then obtained their biggest advantage of the night when Robin Kantin (Silver Spring, Md.) hit from three-point distance to make it 71-37 just 1:51 later.

Missouri Southern (4-0)

	FG	3-PT	FT	R	PF	A	TP
Pierce *	0-3	0-0	1-2	2	5	0	1
Hala'api'api	9-9	0-0	1-2	12	1	1	19
Wood *	5-10	1-3	2-3	6	1	3	13
Kantin *	4-11	2-4	4-4	4	2	2	14
DeVader *	3-5	3-5	0-0	1	3	1	9
Henderson	0-1	0-0	0-1	4	1	3	0
Bonner	2-9	1-3	1-2	4	1	2	6
Marquez	1-4	0-2	0-1	4	1	4	2
Johnson	1-2	0-0	0-0	0	0	0	2
Zawadka	5-10	3-7	0-0	2	0	3	13
Helfrich	1-2	0-0	0-0	5	3	1	2
Vavao-Huggins	1-1	0-0	0-0	3	1	0	2
TOTALS	32-67	10-24	9-15	53	19	20	83
	.478	.417	.600				

Quincy (2-2)

	FG	3-PT	FT	R	PF	A	TP
Stellflue *	3-17	1-8	6-8	5	3	3	13
Burgin *	3-9	1-3	2-2	2	3	0	9
Young *	1-4	1-2	1-2	4	2	0	4
Irby *	1-7	0-1	0-0	6	1	3	2
Keller *	3-14	1-3	0-0	5	1	1	7
Gavlick	4-7	0-0	0-1	2	0	1	8
King	0-0	0-0	1-2	0	0	0	1
Lumley	0-0	0-0	0-0	0	0	0	0
Vaughn	0-3	0-0	0-0	0	0	0	0
Shuman	0-1	0-0	0-0	2	0	0	0
Ballenger	1-1	0-0	2-2	1	1	0	4
Koehler	1-4	0-0	1-4	6	1	0	3
TOTALS	17-67	4-17	13-21	38	12	8	51
	.254	.235	.619				

Halftime: MSSU 31, QU 18; Turnovers: MSSU 17, QU 13; Steals: MSSU 4 (Bonner 2), QU 4 (Keller 2); Blocked Shots: MSSU 4 (Hala'api'api 3), QU 3 (Keller 2).

Game 5 • Nov. 28, 2007
Lions 86, Webster 36

Joplin, Mo. - Missouri Southern head coach Maryann Mitts won her 103rd game to move into second-place on the MSSU all-time wins list as the Lions defeated the Webster Gorloks 86-36 Wednesday night (Nov. 28) at the Leggett & Platt Athletic Center. The win moves the Lions to a perfect 5-0 on the season.

The outcome was never in doubt as the Lions scored the first eight points of the game behind five early points from Robin Kantin (Silver Spring, Md.).

MSSU later built the lead to 20 with a 15-2 run over a 5:15 span to lead 27-7 with 10:21 remaining in the first half.

After Julie McGirl made a layup to bring the Gorloks to within 18, the Lions ripped off an 8-0 spurt that was capped by an Ela Zawadka (Torun, Poland) layup to lead 35-9.

The Lions then out-scored Webster 11-5 over the next 4:29 as India Wood (Decatur, Ala.) converted a layup to put the Lions on top 46-14 with 1:11 left in the opening half. Southern would lead 46-16 at the half.

The second half would not be any different as Kantin scored five points to lead a 9-2 Southern run after halftime that made it 55-18 in favor of the Lions with 15:47 remaining.

The largest lead of the night came when Brittany Vavao-Huggins (Fayetteville, Ark.) hit a jumper with 1:57 remaining to give the Lions an 86-35 lead.

Missouri Southern (5-0)

	FG	3-PT	FT	R	PF	A	TP
Wood *	4-6	0-1	0-0	2	0	3	8
Hala'api'api *	4-6	0-0	2-4	4	1	0	10
Kantin *	4-6	2-4	1-2	1	2	1	11
DeVader *	0-4	0-3	0-0	2	0	3	0
Pierce *	5-10	0-0	0-0	9	3	2	10
Henderson	1-3	0-2	0-0	0	4	2	2
Bonner	7-11	3-5	0-1	6	4	3	17
Marquez	3-9	2-5	0-1	5	1	1	8
Johnson	1-3	0-1	0-0	1	3	0	2
Zawadka	3-4	1-2	1-2	3	1	0	8
Helfrich	1-4	0-0	4-4	8	1	2	6
Vavao-Huggins	2-3	0-0	0-2	3	2	1	4
TOTALS	35-69	8-23	8-16	46	22	18	86
	.507	.348	.500				

Webster (2-2)

	FG	3-PT	FT	R	PF	A	TP
McQueen *	0-4	0-2	2-2	6	2	6	2
McGill *	3-8	0-0	3-5	1	3	0	9
Goedeker *	0-1	0-0	0-0	1	3	0	0
Chesnek *	0-1	0-0	0-0	1	4	0	0
Meyer *	3-13	1-6	0-0	4	0	0	7
Venegoni	2-4	0-1	2-4	2	1	0	6
Wamser, R.	0-1	0-0	0-0	0	0	0	0
Martin	1-4	1-2	2-2	0	1	1	5
Wamser, J.	1-5	1-5	0-0	5	0	0	3
Vahey	0-3	0-0	1-4	5	1	2	1
VanGennip	0-0	0-0	1-4	1	0	2	1
Gellnett	1-2	0-0	0-0	1	0	0	2
TOTALS	11-46	3-16	11-21	34	15	9	36
	.239	.188	.524				

Halftime: MSSU 46, WU 16; Turnovers: WU 29, MSSU 14; Steals: MSSU 13 (Bonner 3), WU 2 (McQueen, VanGennip); Blocked Shots: MSSU 5 (Helfrich 2), WU 0.

Game 5 • Nov. 28, 2007
Lions 86, Webster 36

Joplin, Mo. - Ivaney Marquez (Valencia, Venezuela) scored a career-high 16 points and the Missouri Southern Lions used another inspiring defensive performance to improve to 6-0 by defeating the St. Edward's Hilltoppers for the second time this season, 60-42 Saturday afternoon (Dec. 1) at the Leggett & Platt Athletic Center.

The Lions also knocked off the Hilltoppers 60-39 back on Nov. 16 at the St. Edward's Shootout in Austin, Texas in the season-opener for both squads.

Southern came out of the gates a bit sluggish, missing their first seven shots and falling into an early 7-0 hole with 14:01 left in the first half.

But Trice Bonner (Mobile, Ala.) knocked down a three-pointer for the Lions' first field-goal with 13:07 left in the half and that sparked a 7-0 Lions spurt that tied the game.

Tynesha Pierce (Houston, Texas) then hit her first two career three-pointers to lead a 13-5 run as the Lions jumped ahead 20-12 with 7:42 remaining in the first half.

The Lions led by as many as 10 in the opening half before taking a 31-23 advantage at halftime.

After the Hilltoppers trimmed the lead to 37-31, Marquez made three consecutive layups and contributed two steals as the Lions outscored STEU 8-0 over the next 3:06 to lead 45-31 with 10:45 left in the game.

The Hilltoppers (2-5) got no closer than 11 the rest of the way.

Missouri Southern (6-0)

	FG	3-PT	FT	R	PF	A	TP
Wood *	0-4	0-2	0-2	0	2	4	0
Hala'api'api *	5-8	0-0	0-1	3	4	1	10
Kantin *	0-3	0-1	0-0	2	0	1	0
DeVader *	1-3	1-3	2-2	2	0	1	5
Pierce *	3-6	2-2	1-2	2	3	0	9
Henderson	2-2	0-0	0-0	0	3	3	4
Bonner	1-8	1-2	2-2	5	4	0	5
Marquez	7-10	1-3	1-3	7	2	2	16
Johnson	1-3	0-1	0-0	1	3	0	2
Zawadka	2-4	0-2	0-0	6	2	1	4
Helfrich	2-3	0-0	3-5	1	2	0	7
TOTALS	23-51	5-15	9-17	32	22	13	60
	.451	.333	.529				

St. Edward's (2-5)

	FG	3-PT	FT	R	PF	A	TP
Bartosh *	1-7	0-2	4-8	5	2	2	6
Regian *	2-6	2-3	5-6	3	4	1	11
Sumler *	1-2	0-0	0-0	2	4	0	2
Tidwell *	3-11	2-5	6-8	3	1	0	14
Head *	0-4	0-0	5-6	10	5	1	5
Lara	0-0	0-0	0-0	1	0	0	0
Nagel	0-1	0-1	0-0	4	1	0	0
Etheridge	0-1	0-1	0-0	0	0	0	0
Payton	0-2	0-0	0-0	1	1	0	0
White	0-1	0-0	0-0	0	1	0	0
Starr	0-1	0-1	0-0	1	0	0	0
Rowland	0-1	0-0	0-0	1	0	0	0
Saathoff	2-6	0-0	0-0	3	1	0	4
TOTALS	9-43	4-13	20-28	38	20	4	42
	.209	.308	.714				

Halftime: MSSU 31, STEU 23; Turnovers: STEU 27, MSSU 18; Steals: MSSU 14 (Henderson 3), STEU 4 (Sumler, Tidwell 2); Blocked Shots: MSSU 6 (Hala'api'api 3), STEU 2 (Sumler, Rowland).

Game 7 • Dec. 7, 2007 Lions 59, OPSU 44

Goodwell, Okla. - Robin Kantin went on a 7-0 run of her own in the second half to help vault the Missouri Southern Lions to a pivotal 59-44 regional win tonight at Oklahoma Panhandle State University.

Southern (7-0) fell down 7-0 early to the Lady Aggies, but a jumper from Tynesha Pierce put the Lions on the board.

A layup from OPSU's (4-4) Ro Wilson made the score 9-2, but jumpers from Fatai Hala'Api'Api and India Wood, as well as a three from Robin Kantin tied the game at nine at the 13 minute mark.

A three from Trice Bonner with 10 minutes left gave Southern its first lead of the game at 15-13 and a jumper from Ela Zawadka a minute later pushed the Lions' lead to 17-14 with 9:41 left. The Lady Aggies went on a 7-0 run behind a three from Sarah Polson and a jumper from Alisha Sladek, as well as a layup from Cherrelle Tillis, giving OPSU a 20-17 lead with 4:58 left.

After a Lady Aggie free throw, Kantin and Wood hit back-to-back jumpers to tie the game at 21 heading into the locker room at the half.

Wood put the Lions back on top hitting a jumper right out of the locker room to start the half. Back-to-back scores from Pierce extended the Lions' lead to 29-24 with 17:32 left in the game, but a three from Polson got the Lady Aggies back to within one, (29-28) with 16:37 left.

That would be as close as OPSU would get. A three from Kantin gave the Lions a nine point advantage (45-36) with 8:26 left and a three from Pierce just 26 seconds later made the lead 11. The Lions would lead by as much as 17 after a three from India Wood, her third of the game, made the score 59-42 with three minutes left.

Missouri Southern (7-0)

	FG	3-PT	FT	R	PF	A	TP
Wood *	6-11	3-7	0-0	9	0	3	15
Marquez *	0-4	0-0	0-0	5	1	1	0
Kantin *	6-15	3-10	3-6	3	2	4	18
Zawadka *	1-3	0-1	0-0	3	0	0	2
Pierce *	5-8	1-1	0-0	10	3	2	11
Henderson	1-1	0-0	0-0	0	1	1	2
Bonner	2-3	1-2	0-0	1	3	1	5
Hala'api'api	3-9	0-0	0-4	6	1	1	6
DeVader	0-4	0-4	0-0	2	3	3	0
Helfrich	0-2	0-0	0-0	1	4	1	0
TOTALS	24-60	8-25	3-10	45	18	17	59
	.400	.320	.300				

Okla. Panhandle State (4-4)

	FG	3-PT	FT	R	PF	A	TP
Sladek *	3-8	0-2	0-1	2	2	0	6
Polson *	2-10	2-9	0-0	9	4	1	6
Watkins *	1-1	0-0	1-1	1	1	0	3
Maas *	0-1	0-1	0-4	4	2	1	0
Wilson *	5-16	0-0	1-2	12	1	0	11
Terry	0-4	0-4	0-0	1	0	1	0
Cramer	0-0	0-0	0-0	0	1	0	0
Tillis	2-11	0-2	6-8	6	3	1	10
Brown	2-10	0-2	4-9	2	1	1	8
Ortega	0-0	0-0	0-0	0	0	0	0
Rogic	0-0	0-0	0-0	0	1	0	0
TOTALS	15-61	2-20	12-25	46	16	5	44
	.246	.100	.480				

Halftime: MSSU 21, OPSU 21; Turnovers: MSSU 18, OPSU 16; Steals: OPSU 11 (Polson, Tillis 3), MSSU 8 (Wood, Bonner 2); Blocked Shots: MSSU 7 (Hala'api'api 3), OPSU 0.

Game 8 • Dec. 17, 2007 Lions 70, NSU 62

Tahlequah, Okla. - The No. 24-ranked Missouri Southern Lions used an inspired second half and held on to defeat the Northeastern State Riverhawks 70-62 to improve to a perfect 8-0 on the season Monday night (Dec. 17) in Tahlequah, Okla.

The first half was a see-saw affair and with Southern trailing 31-28, Trice Bonner knocked in a trey and converted two free-throws to give the Lions a 33-31 advantage at the break.

The Lions opened the second half on a 7-0 run to take a 40-31 lead. Tynesha Pierce hit a three-pointer and a layup and India Wood nailed a jumper in transition to key the spurt.

The Riverhawks' Verressa Gaston then converted a three-point play to cut the lead to 40-34, but Ela Zawadka put in one of her three treys on the night to put the Lions back up by nine at 43-34 with 14:58 left.

Southern later out-scored the Riverhawks (3-7) 10-4 over a stretch of 3:45 as Ivaney Marquez capped it with a three-pointer to give the Lions their largest lead of the night at 64-48 with 5:34 remaining in the game.

After the Riverhawks trimmed the lead down to nine, Bonner rebounded her own missed shot and hit a jumper to give the Lions a 68-57 lead with 1:34 left.

But NSU wasn't through as Katie Beshoner made a layup and Sarah Miller hit from long-range to make it 68-62 with 51 seconds remaining.

Wood then missed the front end of a one-on-one opportunity but Marquez made a critical steal on the defensive end and then knocked down a pair of big free throws that put the Lions up by the final margin of 70-62.

#24 Missouri Southern (8-0)

	FG	3-PT	FT	R	PF	A	TP
Wood *	3-6	0-2	5-7	5	0	8	11
Kantin *	2-6	0-2	3-3	2	1	0	7
DeVader *	0-2	0-2	0-1	1	1	5	0
Helfrich *	2-3	0-0	0-0	2	3	0	4
Pierce *	4-5	1-2	0-0	1	5	0	9
Henderson	0-0	0-0	0-0	0	0	1	0
Bonner	4-7	1-4	2-4	4	3	2	11
Marquez	1-2	1-1	2-2	1	0	1	5
Hala'api'api	5-11	0-0	0-1	8	3	0	10
Zawadka	5-7	3-5	0-0	2	2	1	13
Davis	0-0	0-0	0-0	0	3	0	0
TOTALS	26-49	6-18	12-18	28	21	18	70
	.531	.333	.667				

Northeastern State (3-7)

	FG	3-PT	FT	R	PF	A	TP
Sams *	1-5	0-3	0-0	4	4	7	2
Quintana *	1-10	0-5	0-0	0	1	1	2
Gaston *	3-7	0-0	6-6	6	3	0	12
White *	1-3	1-2	5-6	1	1	3	8
Gordon *	4-6	0-0	0-0	3	2	0	8
Webb	3-4	0-0	0-0	3	3	1	6
Hunter	2-4	2-3	2-2	2	2	0	8
Barnhill	3-5	1-2	2-4	3	3	2	9
Millar	1-3	1-3	0-0	0	1	0	3
Jent	1-2	0-0	0-0	1	0	0	2
Beshoner	1-1	0-0	0-1	1	0	1	2
TOTALS	21-50	5-18	15-19	31	20	15	62
	.420	.278	.789				

Halftime: MSSU 33, NSU 31; Turnovers: NSU 16, MSSU 14; Steals: MSSU 9 (Bonner 3), NSU 3 (Sams, Gordon, Webb); Blocked Shots: MSSU 2 (Bonner, Hala'api'api), NSU 0.

Game 9 • Dec. 19, 2007 Lions 79, Evangel 62

Joplin, Mo. - Fatai Hala'Api'Api and Tynesha Pierce combined for 44 points to lead the No. 23-ranked Missouri Southern Lions to a 79-62 win over the Evangel Lady Crusaders in their non-conference finale Wednesday night (Dec. 19) at the Leggett & Platt Athletic Center.

The 23rd ranked Lions finish the non-conference portion of their schedule at 9-0, including a perfect 6-0 in the South Central Region.

The Lions led throughout and gained their largest lead of the night as India Wood knocked in a three-pointer to put Southern up 54-36 with 14:02 remaining in the game.

Evangel (2-7) fought back and out-scored the Lions 7-0 over the next 2:41 to come within 54-43 on a trey from Katie Burger.

Southern then gained more breathing room with a 16-10 run and jumped back ahead 70-53 after a pair of free throw by Fatai with 4:25 remaining.

The Lady Crusaders would not go away though and went on a 7-1 spurt that was sparked by five points from Megan Jewell to claw back within 71-60 with 2:42 left in the contest.

But Fatai helped Southern put it away with six points over the next 2:11 as the Lions ended the game on an 8-2 run.

The Lions jumped on Evangel early by scoring 13 of the game's first 15 points as Ela Zawadka knocked in a three and made two jumpers in that span that helped the Lions lead 13-2.

Southern led by as many as 17 on two occasions in the first half, with the last coming after two free throws from Fatai put the Lions up 39-22 with 2:17 left in the first half.

The Lions went on to lead 42-28 at the half.

#23 Missouri Southern (9-0)

	FG	3-PT	FT	R	PF	A	TP
Wood *	2-6	1-2	5-10	1	1	9	10
Marquez *	1-7	0-2	0-0	6	4	4	2
DeVader *	1-2	1-2	0-0	2	3	2	3
Helfrich *	1-2	0-0	0-0	3	4	2	2
Pierce *	7-14	0-1	3-3	10	3	2	17
Henderson	1-1	0-0	0-0	1	0	0	2
Bonner	1-4	0-2	0-0	1	1	1	2
Hala'api'api	9-15	0-0	9-10	3	2	0	27
Zawadka	5-8	1-2	1-2	2	2	0	12
Davis	0-1	0-0	2-4	0	1	2	2
Vavao-Huggins	0-1	0-0	0-0	1	1	0	0
TOTALS	28-61	3-11	20-29	31	22	22	79
	.459	.273	.690				

Evangel (2-7)

	FG	3-PT	FT	R	PF	A	TP
Hargus *	2-8	2-5	2-2	3	1	0	8
Burger *	3-4	1-1	2-2	5	3	0	9
Mingus *	2-6	1-2	2-2	0	1	1	7
Prentice *	0-2	0-0	0-0	2	1	0	0
Luko *	2-3	0-0	2-2	2	3	2	6
Haraldson	1-1	0-0	2-2	1	2	0	4
Michener	1-1	0-0	1-2	0	2	0	3
Russell	1-3	0-2	2-2	2	2	0	4
Jewell	2-5	2-2	10-10	3	2	3	16
Hogan	2-3	1-2	0-0	3	3	2	5
Pollard	0-0	0-0	0-0	0	4	0	0
TOTALS	16-36	7-14	23-24	29	24	8	62
	.444	.500	.958				

Halftime: MSSU 42, EU 28; Turnovers: EU 23, MSSU 9; Steals: MSSU 9 (Wood, Marquez, DeVader 2), EU 0; Blocked Shots: MSSU 3 (Hala'api'api 2), EU 0.

Game 10 • Jan. 2, 2008 Truman 68, #16 Lions 55

Kirkville, Mo. - Georgia Mueller scored a game-high 27 points as the Truman Bulldogs handed the No. 16-ranked Missouri Southern Lions their first loss of the season, 68-55 in the MIAA opener for both schools Wednesday night (Jan. 2) in Kirkville, Mo.

After Trice Bonner capped a 7-0 Lion run with a layup that gave Southern its first lead of the game at 43-41, the Bulldogs out-scored the Lions 24-5 over the next 8:06 to take a commanding 65-48 lead with 5:09 left in the game.

Nichole Helfrich then scored the next seven points to pull Southern within 65-55 with 2:16 left, but Truman (9-1, 1-0 MIAA) hit three free throws down the stretch to ice the victory.

The Bulldogs led throughout the first half and jumped ahead 9-3 as Mueller scored five quick points in the first four minutes of the game.

Fatai Hala'Api'Api hit a pair of jumpers to bring the Lions to 11-10, but the Bulldogs scored the next six and led 17-10 with 12:37 remaining in the first half.

The Lions (9-1, 0-1 MIAA) battled back and tied the score at 19-19 as Randi Henderson nailed a three-pointer and converted a layup in a 9-2 spurt.

Truman stretched the lead to 32-24 before settling for a 35-29 advantage at the half.

#16 Missouri Southern (9-1, 0-1 MIAA)

	FG	3-PT	FT	R	PF	A	TP
Henderson *	2-4	1-1	0-1	1	2	2	5
Marquez *	0-6	0-4	0-0	3	1	0	0
Zawadka *	0-5	0-3	0-0	11	2	3	0
DeVader *	2-6	2-6	0-0	4	3	1	6
Pierce *	5-13	0-0	1-2	9	5	0	11
Wood	2-9	0-4	3-5	1	0	1	7
Bonner	2-11	1-4	0-0	4	1	1	5
Hala'api'api	3-6	0-0	3-4	1	5	1	9
Davis	0-0	0-0	0-0	0	1	0	0
Helfrich	3-5	0-0	6-7	5	4	0	12
Vavao-Huggins	0-1	0-0	0-0	0	0	1	0
TOTALS	19-66	4-22	13-19	42	24	10	55
	.288	.182	.684				

Truman (9-1, 1-0 MIAA)

	FG	3-PT	FT	R	PF	A	TP
Fowler *	1-3	0-1	2-2	6	1	1	4
Montebello *	3-5	0-1	2-3	4	5	2	8
McGee, Can. *	7-16	4-10	1-3	2	2	2	19
McGee, Car. *	0-6	0-4	4-8	8	1	2	4
Mueller *	9-16	0-0	9-10	12	3	1	27
Guinn	1-3	0-2	2-2	1	1	0	4
Joya	0-0	0-0	2-2	1	1	0	2
Kiecker	0-2	0-0	0-0	4	2	2	0
TOTALS	21-51	4-18	22-30	42	16	10	68
	.444	.500	.958				

Halftime: TSU 35, MSSU 29; Turnovers: TSU 15, MSSU 12; Steals: MSSU 8 (Zawadka, Pierce, Helfrich 2), TSU 5 (Montebello, McGee, Can., McGee, Car., Mueller, Guinn); Blocked Shots: TSU 2 (Mueller 2), MSSU 1 (Hala'api'api).

Game 11 • Jan. 5, 2008 Missouri Western 74, #16 Lions 72

Joplin, Mo. - The No. 16-ranked Missouri Southern Lions lost a see-saw affair to the Missouri Western Griffons, 74-72 in their MIAA home opener Saturday night (Jan. 5) at the Leggett & Platt Athletic Center.

The game featured 18 lead changes, including 12 in the deciding second half. With the game tied 57-57, the Griffons (6-4, 1-1 MIAA) took the lead for good on a layup from Chemia Woods with 8:31 remaining.

A pair of threes from Jill Johnson and Tierra Ford helped the Griffons build the advantage to 71-62 when the Lions (9-2, 0-2 MIAA) began making their surge.

The Lions out-scored Western 8-0 over the next 3:25 behind a jumper and a trey from Ela Zawadka. One free throw from Fatai Hala'Api'Api brought Southern to within 71-70 with 1:34 left in the game.

Yanique Javois then split a pair of free throws for the Griffons, but the Lions failed to score on the offensive end and two free throws from Ford sealed the victory for Western.

Things started well for Southern as Zawadka and Danielle DeVader each connected from long-distance as the Lions jumped out to an 11-4 lead just 4:44 into the contest.

Fatai then scored the next seven Lion points over the next 3:09 to stretch the lead to 18-9 with 12:07 left in the first half.

MWSU answered with a 9-0 run and tied the score on a jumper from Colleen Schnieder at 18-18.

Ford gave the Griffons their first lead since the 19:25 mark on a three-pointer that made it 21-20 with 6:14 remaining in the opening half.

The Lions regained the lead at 27-26 on a trey from Zawadka but Javois answered with a three of her own to put Western back on top and the Griffons went on to lead 33-30 at the half.

#16 Missouri Southern (9-2, 0-2 MIAA)

	FG	3-PT	FT	R	PF	A	TP
Wood *	2-5	1-2	0-0	3	2	8	5
DeVader *	3-9	2-7	0-0	5	1	6	8
Davis *	1-2	0-0	2-2	3	3	3	4
Helfrich *	0-0	0-0	2-3	2	1	1	2
Pierce *	4-7	0-0	0-1	9	2	2	8
Henderson	0-0	0-0	0-0	0	1	0	0
Bonner	1-3	1-2	2-2	1	0	0	5
Marquez *	0-3	0-2	0-0	1	1	0	0
Hala'Api'Api	12-14	0-0	2-9	9	3	0	26
Zawadka	5-9	4-6	0-0	3	2	2	14
TOTALS	28-52	8-19	8-17	36	16	22	72
	.538	.421	.471				

Missouri Western (6-4, 1-1 MIAA)

	FG	3-PT	FT	R	PF	A	TP
Nolke *	2-9	0-4	0-0	2	3	1	4
Woods *	2-7	0-0	3-5	4	1	8	7
Johnson *	7-13	1-3	4-6	10	3	3	19
Javois *	9-18	3-5	4-7	4	3	1	25
Ford *	6-12	3-7	2-2	6	3	2	17
Gawatz	0-0	0-0	0-0	0	0	0	0
Luteyn	0-1	0-0	0-0	2	1	0	0
Schnieder	1-1	0-0	0-0	3	1	0	2
TOTALS	27-61	7-19	13-20	34	15	15	74
	.443	.368	.650				

Halftime: MWSU 33, MSSU 30; Turnovers: MSSU 19, MWSU 12; Steals: MSSU 5 (Pierce 2), MWSU 5 (Woods 3); Blocked Shots: MSSU 4 (Davis, Pierce, Marquez, Hala'Api'Api), MWSU 0.

Game 12 • Jan. 9, 2008 Pittsburg State 54, #23 Lions 44

Joplin, Mo. - The No. 23-ranked Missouri Southern Lions lost for the first time in five outings to the Pittsburg State Gorillas, 54-44 Wednesday night (Jan. 9) at the Leggett & Platt Athletic Center.

The Lions (9-3, 0-3 MIAA) grabbed the lead in the second half with a 9-0 run sparked by a three-point play by Nichole Helfrich to lead 32-31 with 14:33 left.

But the Gorillas (8-4, 2-1 MIAA) answered with a 9-0 run of their own to regain the lead for good at 40-32 with 11:02 remaining in the game.

MSSU fell behind by as many as 12 on two occasions, but fought back to within eight on a three-pointer from Danielle DeVader that made it 52-44 with 1:03 left.

But that was as close as the Lions could get DePrice Taylor clinched the win by hitting a pair of free throws with 27 seconds left.

The opening minutes of the game started out great for the Lions as they jumped out early on PSU by scoring the first six points of the game that included four quick points from India Wood.

The Lions continued the early surge as consecutive layups from Fatai Hala'Api'Api and Wood gave MSSU a 10-2 lead with 14:28 remaining in the first half.

The quick start was keyed by the Lions forcing the Gorillas to miss nine of their first 10 shot-attempts.

Pitt State carried the momentum into the locker room by out-scoring the Lions 7-0 to end the first half that was capped by a layup by Taylor with 17 seconds left in the half.

#23 Missouri Southern (9-3, 0-3 MIAA)

	FG	3-PT	FT	R	PF	A	TP
Wood *	3-9	0-2	7-10	6	4	3	13
DeVader *	3-10	3-10	0-0	3	2	0	9
Davis *	1-5	0-1	0-0	2	2	3	2
Helfrich *	1-3	0-0	1-1	3	3	0	3
Pierce *	3-7	0-0	0-1	2	3	0	6
Henderson	0-0	0-0	0-0	2	1	0	0
Bonner	0-4	0-2	0-0	3	1	0	0
Marquez	0-2	0-2	0-0	4	1	2	0
Hala'Api'Api	4-12	0-0	1-3	7	3	0	9
Zawadka	1-8	0-3	0-0	5	0	0	2
TOTALS	16-60	3-20	9-15	41	20	8	44
	.267	.150	.600				

Pittsburg State (8-4, 2-1 MIAA)

	FG	3-PT	FT	R	PF	A	TP
Witte *	1-7	1-6	0-0	1	2	0	3
Buchanan *	7-16	3-5	4-5	10	1	2	21
Taylor *	4-14	0-2	3-7	7	1	0	11
Sloan *	0-0	0-0	0-0	0	0	0	0
Glenn *	3-8	0-0	2-3	7	4	0	8
Demarest	1-3	0-1	1-2	5	2	1	3
Waugh	1-3	1-3	0-0	2	0	0	3
Igbinigie	0-1	0-0	0-0	3	1	0	0
Martin	0-0	0-0	0-0	0	0	0	0
Hinkin	0-3	0-1	0-0	2	0	3	0
Poppe	0-1	0-0	0-0	0	0	0	0
Troutman	0-3	0-0	5-6	15	2	0	5
TOTALS	17-59	5-18	15-23	55	13	6	54
	.288	.278	.652				

Halftime: PSU 23, MSSU 22; Turnovers: PSU 13, MSSU 12; Steals: MSSU 4 (Helfrich 2), PSU 3 (Buchanan 2); Blocked Shots: MSSU 8 (Helfrich, Pierce, Hala'Api'Api 2), PSU 3 (Troutman 2).

Game 13 • Jan. 12, 2008 Lions 85, Central Missouri 82

Warrensburg, Mo. -India Wood scored a career-high 22 points to lead the No. 23-ranked Missouri Southern Lions to a 85-82 win over the Central Missouri Jennies Saturday afternoon (Jan. 12) in Warrensburg, Mo.

The win is the Lions' first in the MIAA and makes them 10-3 overall and 1-3 in conference action.

The first conference victory would not come easily as the Lions had to battle to the very end to pick up the win. Trailing 77-76, Wood hit her sixth three-pointer of the game to give Southern the lead for good with 58 seconds left.

After Wood hit a pair of free throws to give the Lions a four-point lead, Kelce Goebel drove in for a layup to bring UCM to within 81-79 with 12 seconds left.

But Ela Zawadka calmly stepped up to the line and nailed four big free throws to seal the win for the Lions (10-3, 1-3 MIAA).

The Lions fell behind early by six at 14-8, but ripped off a 13-1 run led by nine points from Tynasha Pierce to take a 21-15 lead with 12:23 remaining in the opening half.

Southern went on to lead by 10 at the half, 48-38 behind a combined 24 first-half points from Pierce and Fatai Hala'Api'Api. Wood also hit four treys to help the Lions gain the double-digit halftime lead.

The Jennies (5-8, 0-4 MIAA) took their first lead of the second half at 57-56 on a three by Deidra Dace that capped a 12-2 UCM run with 12:49 left.

With UCM playing mostly zone in the second half, Danielle DeVader stepped up for the Lions and hit four threes, three of which gave the Lions the lead.

#23 Missouri Southern (10-3, 1-3 MIAA)

	FG	3-PT	FT	R	PF	A	TP
Helfrich *	0-0	0-0	2-2	0	3	2	2
Pierce *	5-10	1-2	2-2	6	3	1	13
Wood *	7-9	6-7	2-3	4	3	6	22
DeVader *	5-5	5-5	0-0	3	3	2	15
Davis *	2-3	0-0	4-4	0	4	1	8
Henderson	0-0	0-0	0-0	1	0	0	0
Marquez	2-5	0-3	0-1	5	2	1	4
Hala'Api'Api	5-7	0-0	2-3	6	3	1	12
Zawadka	2-8	1-4	4-4	3	2	2	9
Vavao-Huggins	0-0	0-0	0-0	0	0	0	0
TOTALS	28-47	13-21	16-19	32	23	16	85
	.596	.619	.842				

Central Missouri (5-8, 0-4 MIAA)

	FG	3-PT	FT	R	PF	A	TP
Jones *	4-9	0-0	7-10	10	4	1	15
Cook *	1-4	1-4	1-2	4	2	3	4
Maple *	7-15	5-8	6-8	0	1	3	25
Dace *	4-11	3-5	4-4	0	4	1	15
Blakemore *	2-6	0-2	0-1	1	2	1	4
Goebel	6-8	3-5	2-2	2	3	4	17
Roberts	0-0	0-0	2-2	0	1	0	2
TOTALS	24-53	12-24	22-29	21	17	13	82
	.453	.500	.759				

Halftime: MSSU 48, UCM 38; Turnovers: MSSU 22, UCM 12; Steals: UCM 11 (Goebel 4), MSSU 7 (Wood 4); Blocked Shots: MSSU 5 (Hala'Api'Api 2), UCM 0.

Game 14 • Jan. 16, 2008 Lions 65, Northwest Missouri 64

Maryville, Mo. -Ivaney Marquez made two key plays on the offensive and defensive ends in the final moments to lead the Missouri Southern Lions to a 65-64 win over the Northwest Missouri State Bearcats Wednesday night (Jan. 16) in Maryville, Mo.

Trailing 64-63, Marquez missed a pair of shots but coralled the offensive board each time and hit a layup to put the Lions ahead with just four seconds remaining.

Marquez then closed the deal on the other end with a block of a last-second jumper by Jessica Burton as the Lions (11-3, 2-3 MIAA) hung on for the victory.

The see-saw game featured seven lead changes, with six coming in the second half. The Bearcats final lead came after a free throw by Kelli Nelson put Northwest (9-5, 4-1 MIAA) up 64-63 with 48 seconds remaining.

The Lions biggest lead of the evening came when Tynasha Pierce capped off a 9-0 Southern spurt with a jumper that made it 60-56 in favor of the Lions with 6:56 left in the second half.

Northwest then scored five straight to lead by one, but a three-pointer by India Wood put the Lions back on top 63-61 with 4:12 left.

Things could not have started much worse for the Lions as the Bearcats began the game on a 15-0 run that included seven points from Mandi Schumacher during that stretch.

Southern battled back and got the lead under double-digits for the first time on a jumper by Pierce that brought the Lions to within 22-14 with 11:13 remaining in the opening half.

As bad as the Lions began the first half, they ended the first stanza in just as great of fashion. After a bucket by Schumacher gave the Bearcats a 32-24 advantage, the Lions closed the half on an 11-1 run that included scoring the final nine points of the opening half.

Lindsey Davis scored five in that span and Ela Zawadka made a layup with 10 seconds left to give the Lions a 35-33 lead going into halftime.

Missouri Southern (11-3, 2-3 MIAA)

	FG	3-PT	FT	R	PF	A	TP
Zawadka *	4-11	2-6	0-0	7	1	0	10
Pierce *	6-13	0-1	0-1	9	3	0	12
Wood *	5-11	3-3	0-1	1	2	4	13
DeVader *	0-0	0-0	0-0	0	1	0	0
Davis *	4-10	0-0	3-4	5	1	5	11
Henderson	0-0	0-0	0-0	0	0	0	0
Marquez	4-11	1-3	0-0	10	0	2	9
Hala'Api'Api	5-10	0-0	0-0	8	5	1	10
TOTALS	28-66	6-13	3-6	41	13	12	65
	.424	.462	.500				

NW Missouri State (9-5, 4-1 MIAA)

	FG	3-PT	FT	R	PF	A	TP
Brue *	3-11	3-5	0-0	5	1	5	9
Schumacher *	9-11	0-0	3-7	9	2	0	21
Vandevender *	2-7	2-6	0-0	2	1	0	6
Nelson *	3-7	2-6	1-2	5	0	1	9
Miller *	0-1	0-0	0-0	3	1	6	0
Uriell	0-0	0-0	0-0	0	0	0	0
Burton	3-6	0-2	0-0	4	3	2	6
Bayer	0-1	0-1	0-0	0	1	0	0
Williams	1-6	0-2	2-2	0	3	1	4
Dill	2-8	1-2	4-4	3	1	0	9
TOTALS	23-58	8-24	10-15	36	13	15	64
	.397	.333	.667				

Halftime: MSSU 35, NWMSU 33; Turnovers: MSSU 19, NWMSU 19; Steals: NWMSU 11 (Vandevender, Nelson, Miller 2), MSSU 10 (Pierce 4); Blocked Shots: MSSU 5 (Zawadka 2), NWMSU 5 (Burton, Dill 2).

Game 15 • Jan. 19, 2008 Lions 58, Southwest Baptist 55

Joplin, Mo. -- Fatai Hala'Api'Api recorded a double-double of 16 points and 12 rebounds to lead the Missouri Southern Lions to a thrilling 58-55 win over the Southwest Baptist Lady Bearcats Saturday night (Jan. 19) at the Leggett & Platt Athletic Center.

Trailing 55-54, Ela Zawadka got open underneath and drew a foul and then stepped up and hit two big free throws to give the Lions a one-point advantage with 1:17 remaining.

The Lions then forced a miss on the other end and Fatai rebounded a Lion miss and put in a hook shot that put Southern up 58-55 with just 35 seconds left.

SBU had ample opportunities to draw even, but missed four consecutive three-pointers in the final seconds.

Leading 36-24 at the half, Lindsey Davis drained a trey to give the Lions a 39-24 advantage 19 seconds into the second before the Lady Bearcats made their way back into the contest.

Kelly Reinkemeyer and Erica Souza combined for all 12 points of a 12-3 SBU run that pulled the Lady Bearcats to within 41-38 with 14:58 remaining.

SBU then climbed to within one at 46-45 on a three-pointer from Courtney Creed with 11:16 left.

Southern stayed ahead at that point and jumped back up by eight after a layup by Fatai capped an 8-2 spurt to put the Lions ahead 54-46.

But the Lady Bearcats refused to go away and grabbed the lead for the first time in the second half by out-scoring the Lions 9-0 over the next 5:35 to lead 55-54 on a jumper by Creed with 2:12 left.

Missouri Southern (12-3, 3-3 MIAA)

	FG	3-PT	FT	R	PF	A	TP
Wood *	2-6	0-3	1-1	5	3	1	5
Zawadka *	0-6	0-3	2-2	2	0	0	2
DeVader *	0-6	0-5	0-1	4	1	2	0
Davis *	6-8	1-1	2-2	1	2	3	15
Pierce *	6-7	0-0	1-2	6	3	0	13
Henderson	0-0	0-0	0-0	0	0	0	0
Bonner	1-3	0-0	0-0	3	0	0	2
Marquez	2-8	1-4	0-0	5	2	4	5
Hala'Api'Api	8-10	0-0	0-0	12	4	0	16
TOTALS	25-54	2-16	6-8	41	15	10	58
	.463	.125	.750				

Southwest Baptist (12-3, 4-2 MIAA)

	FG	3-PT	FT	R	PF	A	TP
Shewmaker *	6-12	3-7	0-1	5	4	2	15
Souza *	3-11	2-6	0-2	2	3	2	8
Creed *	5-13	1-4	0-0	2	3	2	11
Graves *	0-7	0-7	0-0	7	1	2	0
Reinkemeyer *	5-7	0-0	7-9	3	0	2	17
Heady	0-1	0-1	0-0	1	0	2	0
Gatschenberger	0-2	0-2	0-0	2	1	0	0
Cutbirth	2-4	0-0	0-0	0	0	0	4
TOTALS	21-57	6-27	7-12	27	12	12	55
	.368	.222	.583				

Halftime: MSSU 36, SBU 24; Turnovers: MSSU 18, SBU 10; Steals: SBU 8 (Souza 3), MSSU 5 (Hala'Api'Api 2); Blocked Shots: MSSU 2 (DeVader, Hala'Api'Api), SBU 0.

Game 16 • Jan. 23, 2008 Lions 90, No. 16 Emporia State 71

Joplin, Mo. -- The Missouri Southern Lions converted 34-of-38 free throws that led to a convincing, 90-71 victory over the No. 16-ranked Emporia State Lady Hornets Wednesday night (Jan. 23) at the Leggett & Platt Athletic Center.

India Wood continued her stellar play in the MIAA with a career-high 24 points on 8-of-11 from the field. She also made all six of her free-throw attempts and both of her tries from three-point distance. Wood has been the Lions leading scorer in three of their four conference victories this season.

The Lions (13-3, 4-3 MIAA) were led at the stripe by Danielle DeVader, who was a perfect 10-of-10 at the line to account for all of her points.

The closest ESU came in the second half was three as Michelle Stueve converted a three-point play that made it 48-45 Lions with 15:05 remaining.

Wood and Tynesha Pierce then combined for nine points to lead an 11-2 run that gave the Lions a double-digit lead at 59-47.

The Lions maintained at least an eight-point advantage from that point and made 12 free throws over the final 2:09 to pull away for the big win.

After Stueve hit a three to put the Lady Hornets up 5-2 in the early minutes, the Lions went on a 19-2 burst and led 21-7 after Wood made a layup with 13:49 left in the opening half.

The Lions built the lead to 17 at 27-10 before Stueve hit a trey to cap an 11-2 Lady Hornet spurt with 8:34 left in the opening stanza that brought ESU to within eight.

MSSU went on to lead 43-35 at the half.

Missouri Southern (13-3, 4-3 MIAA)

	FG	3-PT	FT	R	PF	A	TP
Wood *	8-11	2-2	6-6	4	4	3	24
Zawadka *	4-9	2-5	2-2	5	3	1	12
DeVader *	0-2	0-0	10-10	5	2	2	10
Davis *	1-2	0-0	0-2	2	2	0	2
Pierce *	7-15	0-0	8-9	8	2	0	22
Henderson	0-0	0-0	0-0	0	1	0	0
Bonner	0-3	0-2	0-0	2	4	0	0
Marquez	0-2	0-1	0-0	2	0	0	0
Hala'Api'Api	4-8	0-0	5-6	6	3	1	13
Helfrich	2-4	0-0	3-3	4	0	0	7
TOTALS	26-56	4-10	34-38	46	21	7	90
	.464	.400	.895				

#16 Emporia State (11-5, 4-3 MIAA)

	FG	3-PT	FT	R	PF	A	TP
Boston *	5-10	1-5	4-5	0	3	2	15
Leiker *	5-10	2-5	2-2	1	3	3	14
Kisner *	3-7	0-2	0-0	4	4	1	6
Stueve *	6-20	4-9	5-5	8	3	3	21
Renberg *	0-0	0-0	0-0	0	2	1	0
Augustyn	1-2	1-2	0-0	0	1	1	3
Corker	0-1	0-1	0-0	0	1	1	0
Zabel	0-0	0-0	0-0	0	1	0	0
Edwards	4-7	1-1	0-0	5	4	1	9
Volkens	1-3	0-0	1-3	2	4	1	3
TOTALS	25-60	9-25	12-15	24	26	14	71
	.417	.360	.800				

Halftime: MSSU 43, ESU 35; Turnovers: MSSU 18, ESU 17; Steals: MSSU 7 (Pierce 3), ESU 3 (Boston, Stueve, Volkens); Blocked Shots: MSSU 6 (Pierce 3), ESU 3 (Stueve 2).

Game 17 • Jan. 26, 2008 Fort Hays State 70, Lions 59

Hays, Kan. -- Naomi Bancroft made six three-pointers and scored a game-high 24 points to lead the Fort Hays State Lady Tigers to a 70-59 win over the Missouri Southern Lions in MIAA action Saturday afternoon (Jan. 26) in Hays, Kan.

The loss snaps the Lions' four-game winning streak and puts them at 4-4 in the MIAA and 13-4 overall. FHSU improves to 8-9 and 2-6 in conference play.

Even though the Lions never led in the first half, they managed to stay close and took their first lead of the game on an Ela Zawadka three to go up 39-37 with 16:08 remaining in the game.

The Lions' biggest lead of the day was three after Tynesha Pierce snapped a 39-39 tie with a layup and then converted a free throw to put the Lions ahead 42-39.

Sheena Kuntzsch then tied the score with a trey, but Danielle DeVader immediately answered with a jumper that made it 44-42 Lions with 12:01 left.

But the Lady Tigers gained the lead for good with a 12-2 run that was sparked by eight points from Bancroft that put FHSU up 54-46 with 8:13 remaining.

The Lions hung around though as DeVader knocked in a pair of threes as part of an 11-5 spurt that pulled Southern to within two at 59-57 with exactly two minutes left in the contest.

However, FHSU put the game away with a game-ending 13-2 run to pull away for the victory.

Missouri Southern (13-4, 4-4 MIAA)

	FG	3-PT	FT	R	PF	A	TP
Pierce *	6-11	1-1	5-8	8	3	0	18
Wood *	4-15	3-7	0-0	4	3	4	11
Zawadka *	3-8	2-7	0-0	3	0	4	8
DeVader *	5-10	3-8	0-0	5	4	1	13
Davis *	0-2	0-0	0-0	0	1	1	0
Bonner	0-0	0-0	0-0	0	0	0	0
Marquez	0-3	0-2	1-2	3	2	1	1
Hala'Api'Api	3-10	0-0	2-2	7	2	0	8
Helfrich	0-1	0-0	0-0	0	0	0	0
TOTALS	21-60	9-25	8-12	32	15	11	59
	.350	.360	.667				

Fort Hays State (8-9, 2-6 MIAA)

	FG	3-PT	FT	R	PF	A	TP
Willhite *	6-10	0-0	1-5	7	4	0	13
Kuntzsch *	1-9	1-4	4-4	9	2	4	7
Klug *	5-12	2-6	0-0	5	0	5	12
Bancroft *	7-19	6-17	4-4	3	1	1	24
Mason *	2-3	1-1	0-0	11	1	5	5
Biel	2-5	1-1	0-0	3	2	1	5
Cornett	2-3	0-0	0-0	2	0	2	4
Bessert	0-0	0-0	0-0	0	0	0	0
TOTALS	25-61	11-29	9-13	44	10	18	70
	.410	.379	.692				

Halftime: FHSU 35, MSSU 34; Turnovers: FHSU 13, MSSU 10; Steals: MSSU 7 (Hala'Api'Api 2), FHSU 6 (Bancroft 2); Blocked Shots: MSSU 3 (Pierce, Marquez, Hala'Api'Api), FHSU 2 (Biel 2).

Game 18 • Jan. 30, 2008 Lions 69, #12 Washburn 61

Topeka, Kan. - The Missouri Southern Lions used a solid effort on both ends of the floor to gain an important road MIAA victory, 69-61 at the No. 12-ranked Washburn Lady Blues Wednesday night (Jan. 30) in Topeka, Kan. It is the Lions' first win in Topeka since the 1995 season.

The Lions scored the first five points of the contest and built the lead to double-figures at 19-8 on a jumper from India Wood. Lindsey Davis then knocked in a jumper that gave the Lions their largest lead at 31-19.

Washburn answered with an 8-0 spurt that trimmed the lead to 31-27, but the Lions scored three of the final four points of the half to take a 34-28 lead into the locker room.

With the Lions up 40-33 early in the second half, Fatai Hala'Api'Api hit a shot and then Davis drained a three that gave the Lions a double-digit lead again at 45-33.

Southern extended the lead to 14 with a long three-pointer from Wood that made it 48-34 in favor of the Lions. Nichole Helfrich quickly put Southern up by 18 with back-to-back buckets with 11:32 remaining.

Corkey Stiger helped the Lady Blues get back in the game with a couple of treys as part of a 10-0 run that cut the lead to nine at 53-44.

DeVader gave the Lions control of the game again with eight straight points during a critical stretch on an offensive putback and two threes that gave the Lions a 16-point advantage at 61-45.

WU wouldn't go quietly and climbed to within eight at 64-56 on a layup from Jessica Mainz.

But Tynesha Pierce sealed the victory for Southern by converting a three-point play that put the Lions back up by 11 at 67-56 with 25 seconds left.

Missouri Southern (14-4, 5-4 MIAA)

	FG	3-PT	FT	R	PF	A	TP
Pierce *	7-10	1-2	2-3	0	5	0	17
Wood *	6-10	1-3	0-1	1	1	3	13
Zawadka *	0-2	0-2	1-2	1	1	4	1
DeVader *	3-5	2-3	2-2	6	3	1	10
Davis *	4-8	1-1	5-6	7	3	2	14
Henderson	0-1	0-0	0-0	1	1	0	0
Marquez	0-0	0-0	0-0	1	2	1	0
Hala'Api'Api	2-8	0-0	2-4	7	4	2	6
Helfrich	3-3	0-0	2-2	2	4	0	8
TOTALS	25-47	5-11	14-20	30	24	13	69
	.532	.455	.700				

#12 Washburn (14-4, 6-3 MIAA)

	FG	3-PT	FT	R	PF	A	TP
Holmes *	2-5	0-0	6-8	8	2	1	10
Gregory *	1-4	0-2	2-2	2	2	0	4
Mainz *	3-8	0-1	5-7	2	3	3	11
Stiger *	8-19	3-12	4-4	4	2	1	23
Bright *	2-10	0-3	2-2	3	3	0	6
Germano	0-0	0-0	1-2	1	0	0	1
Mullen	1-1	1-1	1-3	2	1	2	4
Taillele	0-2	0-1	0-0	0	0	0	0
Silovsky	0-0	0-0	0-0	1	1	1	0
Araujo	1-1	0-0	0-1	0	1	0	2
TOTALS	18-50	4-20	21-29	28	15	8	61
	.360	.200	.724				

Halftime: MSSU 34, WU 28; Turnovers: MSSU 19, WU 16; Steals: MSSU 7 (DeVader, Davis Helfrich 2), WU 4 (Stiger 3); Blocked Shots: WU 2 (Holmes, Stiger), MSSU 1 (Marquez).

Game 19 • Feb. 2, 2008
Lions 77, Truman 71, OT

Joplin, Mo. -- The Missouri Southern Lions out-scored the Truman Bulldogs 10-4 in the extra period to defeat the Truman Bulldogs 77-71 in overtime Saturday afternoon (Feb. 2) at the Leggett & Platt Athletic Center.

The victory is the Lions' sixth in seven games in the MIAA and puts them at 15-4 overall and 6-4 in the conference. The Bulldogs fall to 13-6 overall and 5-5 in the MIAA.

Senior India Wood continued her stellar play MIAA games by hitting the go-ahead three-pointer with 2:10 left in the overtime period to put the Lions ahead for good 73-71.

After the Lions forced the Bulldogs into consecutive misses and a turnover, Danielle DeVader and Ela Zawadka each hit a pair of free throws to close out the win.

Things appeared difficult for the Lions late in regulation after Georgia Mueller hit two from the charity stripe to give the Bulldogs a 67-64 advantage with 2:00 remaining in the second half. But DeVader hit a huge trey that tied the score with 59 seconds left for the final points of regulation.

The Lions trailed 32-27 at the half but Tynesha Pierce scored eight points to spark a 15-5 second-half opening run that put the Lions up 42-37 with 14:23 remaining.

Truman answered with a 10-2 run capped off by a three from Carmen McGee that put the Bulldogs up 47-44.

Southern continued the back-and-forth spurts and took a 55-49 lead as DeVader knocked in a pair of threes to lead an 11-2 Lion run over a span of 2:57.

The Bulldogs led throughout the first half and jumped out to a 12-4 early advantage on a layup from Mueller.

Katie Fowler hit two free throws to give Truman their biggest lead of the half at 21-8 with 10:07 left in the first half.

The Lions trailed 26-14 before out-scoring the Bulldogs 13-6 over the final 6:07 of the opening half to cut the lead to five.

Missouri Southern (15-4, 6-4 MIAA)

	FG	3-PT	FT	R	PF	A	TP
Wood *	6-20	4-11	1-2	6	1	5	17
Zawadka *	4-11	0-4	2-2	9	1	3	10
DeVader *	3-8	3-7	2-2	9	3	0	11
Davis *	2-6	0-2	4-4	4	4	1	8
Pierce *	5-9	0-1	2-3	5	5	0	12
Henderson	0-1	0-0	0-0	0	1	1	0
Marquez	3-7	1-3	1-1	6	0	1	8
Hala'Api'Api	4-8	0-0	1-1	1	5	0	9
Helfrich	1-4	0-0	0-0	6	5	0	2
Vavao-Huggins	0-0	0-0	0-0	1	0	0	0
TOTALS	28-47	8-28	13-15	51	25	11	77
	.378	.286	.867				

Truman (13-6, 5-5 MIAA)

	FG	3-PT	FT	R	PF	A	TP
Fowler *	3-7	1-3	3-4	6	2	1	10
Montebello *	0-8	0-4	0-2	2	2	5	0
McGee, Can. *	2-7	2-5	1-2	5	2	2	7
McGee, Car. *	3-9	3-6	0-0	6	2	0	9
Mueller *	12-16	0-1	5-7	8	4	4	29
Guinn	0-2	0-1	4-4	3	2	2	4
Joya	1-4	1-3	3-4	2	0	1	6
Kiecker	2-7	0-1	2-5	7	2	0	6
TOTALS	23-60	7-24	18-28	43	16	15	71
	.383	.292	.643				

Halftime: TSU 32, MSSU 27; Turnovers: TSU 14, MSSU 12; Steals: MSSU 13 (Wood 5), TSU 2 (Montebello, Guinn); Blocked Shots: MSSU 4 (Marquez 3), TSU 2 (Mueller).

Game 20 • Feb. 6, 2008
#19 Washburn 72, Lions 59

Joplin, Mo. -- Four players scored in double-figures to lead the No. 19-ranked Washburn Lady Blues to a 72-59 win over the Missouri Southern Lions in a matchup of the league's top two defensive squads Wednesday night (Feb. 6) at the Leggett & Platt Athletic Center.

Washburn's win means the two schools split the season series, as the Lions defeated the Lady Blues 69-61 one week ago (Jan. 30) for their first win in Topeka, Kan. since 1995.

The Lions (15-5, 6-5 MIAA) led throughout much of the first half but the Lady Blues took control with a 22-6 run from the 3:14 point of the first half through the 15:09 mark of the second half.

Renata Germano scored five points to lead a first-half ending 9-2 WU spurt that turned a three-point deficit into a 28-24 halftime advantage.

The Lady Blues (16-4, 8-3 MIAA) opened the second-half on a 13-4 run and went ahead 41-28 on a trey by Amanda Holmes.

Danielle DeVader did her best to keep the Lions in it by knocking down four three-pointers in the second half, including a pair that brought Southern to within single-digits. One trey cut the Washburn lead to 43-35 with 10:46 remaining.

But Jessica Mainz hit a three and converted a three-point play as WU out-scored the Lions 8-3 over the next 3:21 to go back up 51-38.

The Lions hit from long-range to come within 10 on three occasions after that, but each time they did the Lady Blues answered with a three of their own to hold off Southern.

Missouri Southern (15-5, 6-5 MIAA)

	FG	3-PT	FT	R	PF	A	TP
Marquez *	0-0	0-0	0-0	1	0	1	0
Zawadka *	1-3	1-3	1-2	4	4	0	4
DeVader *	4-8	4-8	3-4	7	4	0	15
Davis *	3-10	0-1	0-0	6	5	5	6
Pierce *	3-4	0-0	1-2	4	2	0	7
Henderson	0-0	0-0	0-0	2	1	2	0
Wood	2-7	2-4	0-0	1	2	1	6
Hala'Api'Api	4-7	0-0	11-13	2	3	0	19
Helfrich	0-0	0-0	2-4	3	3	1	2
TOTALS	17-39	7-16	18-25	32	24	10	59
	.436	.438	.720				

#19 Washburn (16-4, 8-3 MIAA)

	FG	3-PT	FT	R	PF	A	TP
Holmes *	3-10	2-3	4-4	8	5	0	12
Mainz *	3-7	1-3	8-9	4	1	7	15
Stiger *	5-15	2-6	5-8	4	2	4	17
Bright *	4-13	3-4	0-3	5	2	2	11
Gregory *	2-5	1-3	0-0	4	1	0	5
Ulsaker	0-1	0-0	1-2	2	0	0	1
Germano	2-4	0-0	3-4	4	4	0	7
Mullen	0-0	0-0	0-0	1	0	0	0
Taillele	0-2	0-1	0-0	0	1	0	0
Silovsky	1-3	0-0	0-0	0	2	0	2
Araujo	1-2	0-0	0-0	1	2	0	2
TOTALS	21-62	9-20	21-30	39	20	13	72
	.339	.450	.700				

Halftime: WU 28, MSSU 24; Turnovers: MSSU 20, WU 9; Steals: WU 5 (Mainz 4), MSSU 2 (Marquez, DeVader); Blocked Shots: MSSU 3 (Pierce 2), WU 1 (Mainz).