



# MISSOURI SOUTHERN STATE UNIVERSITY

## WOMEN'S BASKETBALL REPORT

Jan. 26, 2008

FOR IMMEDIATE RELEASE

### Lions travel to Fort Hays State in search of 5th straight MIAA victory

#### 2007-08 LIONS SCHEDULE

DATE	OPPONENT	TIME
Nov. 4	@ Arkansas (EX)	L, 47-52
<b>NOV. 10</b>	<b>LIVIN' THE DREAM (EX)</b>	<b>W, 74-49</b>
Nov. 16	@ St. Edwards	W, 60-39
Nov. 17	vs. Incarnate Word	W, 52-43
Nov. 23	vs. St. Mary's	W, 66-29
Nov. 24	vs. Quincy	W, 83-51
<b>NOV. 28</b>	<b>WEBSTER UNIVERSITY</b>	<b>W, 86-36</b>
<b>DEC. 1</b>	<b>ST. EDWARDS</b>	<b>W, 60-42</b>
Dec. 7	@ OK Panhandle State	W, 59-44
Dec. 17	@ Northeastern State	W, 70-62
<b>DEC. 19</b>	<b>EVANGEL</b>	<b>W, 79-62</b>
Jan. 2	@ Truman State *	L, 55-68
<b>JAN. 5</b>	<b>MISSOURI WESTERN * ..L, 72-74</b>	
<b>JAN. 9</b>	<b>PITTSBURG STATE * ..L, 44-54</b>	
Jan. 12	@ Central Missouri *	W, 85-82
Jan. 16	@ Northwest Missouri *	W, 65-64
<b>JAN. 19</b>	<b>SOUTHWEST BAPTIST * W, 58-55</b>	
<b>JAN. 23</b>	<b>#16 EMPORIA STATE * W, 90-71</b>	
Jan. 26	@ Fort Hays State *	3 pm
Jan 30	@ Washburn *	5:30 pm
<b>FEB. 2</b>	<b>TRUMAN STATE * ..1 PM</b>	
<b>FEB. 6</b>	<b>WASHBURN * ..5:30 PM</b>	
<b>FEB. 9</b>	<b>FORT HAYS STATE * ..5:30 PM</b>	
Feb. 13	@ Emporia State *	5:30 pm
Feb. 16	@ Southwest Baptist *	5:30 pm
<b>FEB. 20</b>	<b>CENTRAL MISSOURI * ...5:30 PM</b>	
<b>FEB. 23</b>	<b>NORTHWEST MISSOURI * ..1 PM</b>	
Feb. 27	@ Pittsburg State *	5:30 pm
Mar. 1	@ Missouri Western *	5:30 pm
Mar. 6-9	@ MIAA Tournament	TBA (Kansas City, Mo.)

**Bold** Indicates Home Game

\* Indicates MIAA Game

#### Missouri Southern (13-3, 4-3 MIAA) at Fort Hays State (7-9, 1-6 MIAA)

Sat. Jan. 26, 2008 • Hays, Kan.

**Tipoff:** 3 p.m.

**Arena:** Gross Memorial Coliseum (6,814)

**Last Meeting:** 2/3/07: MSSU defeated FHSU, 70-61 in Hays, Kan.

**Radio:** KHST 101.7 FM Tall Grass Country; Kevin Greim (play-by-play)

**TV:** www.themiasa.tv

**Internet Audio:** www.mssu.edu/athletics

**Live Internet Stats:** None

#### PROBABLE STARTERS

LIONS (13-3, 4-3 MIAA)		Pos.	Yr.	Ht.	PPG	RPG	APG
5	India Wood (Decatur, Ala.)	G	Jr.	5-7	10.1	3.5	4.1
21	Ela Zawadka (Torun, Poland)	G	Sr.	5-11	6.6	3.9	0.8
22	Danielle DeVader (Holton, Kan.)	G	Jr.	5-9	4.4	2.5	1.9
23	Lindsey Davis (Wellington, Kan.)	G	Jr.	5-8	4.9	1.4	1.9
42	Tynesha Pierce (Houston, Texas)	F	Sr.	6-0	11.0	6.4	0.7
Fort Hays State (7-9, 1-6 MIAA)		Pos.	Yr.	Ht.	PPG	RPG	APG
10	Kayla Klug (Odin, Kan.)	G	So.	5-8	7.6	2.6	1.6
20	Naomi Bancroft (Vona, Colo.)	G	So.	5-8	12.4	3.0	1.3
21	Meshia Mason (Liberal, Kan.)	G	Sr.	5-3	3.3	3.8	3.9
25	Brianna Willhite (Wichita, Kan.)	F	Sr.	6-1	13.0	4.4	0.8
33	Sheena Kuntzsch (Scott City, Kan.)	G	Sr.	5-9	13.4	6.8	2.9

#### THE COACHES

After six straight winning seasons, Maryann Mitts is quickly closing in on becoming the winningest coach in Missouri Southern history. With 111 career victories, Mitts is now the second all-time winningest coach at MSSU and trails Jim Phillips by just 18 games. Under Mitts' guidance, the Lions have put together 15 or more wins in five of Mitts' six years at the helm and have moved back into the upper echelon of the highly competitive Mid-America Intercollegiate Athletics Association. Last year, Mitts helped the Lions overcome an injury-riddled season to post their sixth straight winning record at 14-13, including a tie for fifth place in the MIAA and a sixth consecutive appearance in the MIAA Postseason Tournament. Overall, Mitts has compiled a 111-74 (.600) record in her seventh season with the Lions. She holds a 194-130 (.599) mark now in her 12th year as a collegiate head coach. Mitts is 1-1 vs. FHSU as MSSU head coach.

Annette Wiles is in her eighth season of directing the Fort Hays State University women's basketball program. She is 131-83 during her career at FHSU and 295-135 overall. Wiles led the Lady Tigers to a 21-7 record during the 2005-06 season and a Rocky Mountain Athletic Conference Tournament appearance. The Lady Tigers have reached the 20-win plateau three times in Wiles' tenure Fort Hays State. Wiles is 1-1 vs. the Lions as the FHSU mentor.



CONTACT: LEVI CONVIRS, SPORTS INFORMATION ASSISTANT

EMAIL: SPORTSINFO@MSSU.EDU  
3950 E. NEWMAN RD.  
JOPLIN, MO  
64801-1595

OFFICE: 417/625.9851  
FAX: 417/625.9397  
CELL: 918/533/8707



Visit Missouri Southern Athletics on the web at [www.mssu.edu/athletics](http://www.mssu.edu/athletics)

## 2007-08 MIAA STANDINGS

	MIAA		All Games	
	W-L	Pct.	W-L	Pct.
Southwest Baptist	5-2	.714	13-3	.813
Washburn (8)	5-2	.714	13-3	.813
Northwest Missouri State	5-2	.714	10-6	.625
Missouri Southern	4-3	.571	13-3	.813
Truman State	4-3	.571	12-4	.750
Emporia State (16)	4-3	.571	11-5	.688
Missouri Western	4-3	.571	9-6	.600
Pittsburg State	2-5	.286	8-8	.500
Fort Hays State	1-6	.143	7-9	.438
Central Missouri	1-6	.143	6-10	.375

WBCA/USA Today/ESPN Division II Coaches Poll ranking in parenthesis

### SATURDAY, JANUARY 26

- \*SBU @ TSU, 1:00 PM
- \*UCM @ NWMSU, 1:30 PM
- \*MSSU @ FHSU, 3:00 PM
- \*WU @ PSU, 5:30 PM

### SUNDAY, JANUARY 27

- \*MWSU @ ESU, 1:30 PM

### TUESDAY, JANUARY 29

- \*MWSU @ SBU, 5:30 PM

### WEDNESDAY, JANUARY 30

- \*ESU @ NWMSU, 5:30 PM
- \*MSSU @ WU, 5:30 PM
- \*PSU @ FHSU, 5:30 PM
- \*TSU @ UCM, 5:30 PM

### SATURDAY, FEBRUARY 2

- \*TSU @ MSSU, 1:00 PM
- \*PSU @ UCM, 1:30 PM
- \*FHSU @ ESU, 5:30 PM
- \*MWSU @ WU, 5:30 PM
- \*NWMSU @ SBU, 5:30 PM

### WEDNESDAY, FEBRUARY 6

- \*NWMSU @ ESU, 5:30 PM
- \*SBU @ MWSU, 5:30 PM
- \*UCM @ TSU, 5:30 PM
- \*WU @ MSSU, 5:30 PM

### RECENT RESULTS

- WEDNESDAY, JANUARY 16
- \*MSSU 65 @ NWMSU 64 FINAL
  - \*SBU 86 @ PSU 80 FINAL
  - \*TSU 61 @ ESU 98 FINAL
  - \*UCM 63 @ MWSU 89 FINAL
  - \*WU 70 @ FHSU 53 FINAL

- SATURDAY, JANUARY 19
- \*ESU 73 @ UCM 63 FINAL
  - \*NWMSU 95 @ PSU 65 FINAL
  - \*TSU 60 @ WU 83 FINAL
  - \*FHSU 66 @ MWSU 88 FINAL
  - \*SBU 55 @ MSSU 58 FINAL

- TUESDAY, JANUARY 22
- \*WU 61 @ SBU 66 FINAL

- WEDNESDAY, JANUARY 23
- \*ESU 71 @ MSSU 90 FINAL
  - \*NWMSU 82 @ TSU 84 FINAL
  - \*PSU 75 @ MWSU 77 FINAL
  - \*UCM 74 @ FHSU 62 FINAL

## ALL-TIME SERIES VS. FORT HAYS STATE

1/28/77	Fort Hays.....103-81
<b>2/18/77</b>	<b>Southern..... 66-54</b>
1/13/78	Fort Hays.....86-59
<b>2/3/78</b>	<b>Fort Hays..... 64-58</b>
1/27/79	Fort Hays.....65-58
<b>2/17/79</b>	<b>Southern..... 81-73</b>
<b>1/18/80</b>	<b>Fort Hays..... 76-60</b>
2/10/80	Fort Hays.....88-74
<b>1/31/81</b>	<b>Fort Hays..... 76-56</b>
2/21/81	Fort Hays.....102-86
<b>1/22/82</b>	<b>Southern..... 80-68</b>
2/20/82	Fort Hays.....90-68
1/28/83	Southern.....77-71
<b>2/19/83</b>	<b>Fort Hays..... 67-64</b>
1/21/84	Southern.....81-77
<b>2/3/84</b>	<b>Southern..... 95-77</b>
1/18/85	Fort Hays.....69-59
<b>2/16/85</b>	<b>Southern..... 84-63</b>
<b>1/31/86</b>	<b>Southern..... 84-67</b>
2/22/86	Fort Hays.....79-76
<b>1/24/87</b>	<b>Southern..... 64-56</b>
2/6/87	Fort Hays.....74-60
1/30/88	Fort Hays.....63-53
<b>2/19/88</b>	<b>Fort Hays..... 61-59</b>
1/20/89	Fort Hays.....75-61
<b>2/18/89</b>	<b>Southern..... 70-68</b>
<b>1/20/07</b>	<b>Fort Hays..... 86-69</b>
2/3/07	Southern.....70-61

### INSIDE THE SERIES

Fort Hays leads 17-11  
 Lions at home: 8-6  
 Lions on the road: 3-11  
 Most points, MSSU: 95 (95-77), 2/3/84 at Joplin  
 Most points, Fort Hays: 103 (103-81), 1/28/81 at Hays, Kan.  
 Largest victory margin, MSSU: +21 (84-63), 2/16/85 at Joplin  
 Largest victory margin, Fort Hays: +22 (103-81), 1/28/77 at Hays, Kan.  
 Last road win, MSSU: 70-61, 2/3/07  
 Last road win, Fort Hays: 86-69, 1/20/07  
 Most consecutive wins, MSSU: 2, Jan. 21, 1984-Feb. 3, 1984 & Feb. 16, 1985-Jan. 31, 1986  
 Most consecutive wins, Fort Hays: 4, Jan. 18, 1980-Feb. 21, 1981 & Feb. 6, 1987-Jan. 20, 1989

## USA TODAY/ESPN TOP 25 DATE: 1/22/08

1. Delta State University (Miss.) - 13-0
2. Concordia University, St. Paul (Minn.) - 18-0
3. Seattle Pacific University (Wash.) - 15-0
4. University of North Dakota - 17-1
5. Indiana University Of Pennsylvania - 16-1
6. University Of South Dakota - 16-1
7. Drury University (Mo.) - 13-2
8. Washburn University (Kan.) - 13-2
9. University Of Alaska Anchorage - 16-2
10. Holy Family University (Pa.) - 15-0
11. Minnesota State University, Mankato - 15-2
12. Fairmont State University (W. Va.) - 15-1
13. Valdosta State University (Ga.) - 15-3
14. Northern Kentucky University - 13-3
15. Fort Lewis College (Colo.) - 15-1
16. Emporia State University (Kan.) - 11-4
17. University of West Georgia - 17-2
18. West Texas A&M University - 12-3
19. Michigan Technological University - 15-3
20. Franklin Pierce University (N.H.) - 14-3
21. California State University, Chico - 13-4
22. Assumption College (Mass.) - 16-3
23. Stonehill College (Mass.) - 13-4
24. Arkansas Tech University - 14-2
25. Sonoma State University (Calif.) - 13-2

Receiving Votes: Missouri Southern State University, 2

## MIAA PRESEASON POLL

	Pts
1. Emporia State (6)	78
2. Washburn (4)	76
3. Northwest Missouri State	58
4. Central Missouri	51
5. Missouri Southern	50
6. Missouri Western	42
7. Pittsburg State	34
8. Fort Hays State	22
Southwest Baptist	22
10. Truman	17

**Last Time vs. Fort Hays State  
(Game 20) Feb. 3, 2007  
Lions 70, Fort Hays State 61**

Hays, Kan. - A layup from Tynesha Pierce (Houston, Texas) with 14 minutes remaining in the first half, gave Missouri Southern a lead they wouldn't relinquish and the Lions stopped a seven game losing streak with a 70-61 road win at Fort Hays State tonight.

After a three from Danielle DeVader (Holton, Kan.) started things off, both teams jockeyed for the lead. However, a layup from Pierce gave the Lions a 9-7 lead at the 14 minute mark and they wouldn't look back. Robin Kantin (Silver Spring, Md.) had four threes in the half and the Lions went into the locker room up by 12, 39-27.

Four early points from Dana-Mae Robbs (Lecompton, Kan.) pushed the Lions lead to 13 just two minutes in. The lead was as large as 14 after a jumper from Ela Zawadka (Torun, Poland) made the score 57-43 with just over ten minutes left in the game. Another three from Kantin and Zawadka again gave the Lions leads of 14. Hays (11-9, 3-9 MIAA) got as close as eight twice, but couldn't recover.

**Missouri Southern (11-9, 4-8 MIAA)**

	FG	3-PT	FT	R	PF	A	TP
Robbs *	3-9	0-0	7-9	7	2	2	13
Pierce *	4-5	0-0	2-2	5	4	0	10
Kantin *	5-13	5-10	3-4	10	2	2	18
DeVader *	1-2	1-2	0-0	2	1	1	3
Kuczynski *	0-1	0-1	0-1	6	2	13	0
Wood	1-1	1-1	0-1	1	2	0	3
Hala'Api'Api	7-10	0-0	0-0	7	5	0	14
Zawadka	3-8	2-6	1-2	3	2	3	9
TOTALS	24-49	9-20	13-19	45	20	21	70
	.490	.450	.684				

**Fort Hays State (11-9, 3-9 MIAA)**

	FG	3-PT	FT	R	PF	A	TP
Gustin *	3-8	0-1	10-11	7	4	1	16
Kuntzsch *	3-8	1-2	3-4	5	2	0	10
Rausch *	2-8	2-7	0-0	4	3	2	6
Bancroft *	5-14	2-9	1-1	1	2	2	13
Mason *	0-8	0-2	0-2	1	1	3	0
Klug	4-9	2-3	1-2	4	5	2	11
Boling	2-4	0-0	0-0	2	0	0	4
Matteson	0-2	0-2	0-0	0	0	0	0
King	0-0	0-0	0-0	0	0	1	0
Huston	0-0	0-0	1-2	2	1	0	1
TOTALS	19-61	7-26	16-22	28	18	11	61
	.311	.269	.727				

Halftime: MSSU 39, FHSU 27; Turnovers: MSSU 21, FHSU 11; Steals: FHSU 11 (Mason 3), MSSU 4 (Pierce, Kantin, Kuczynski, Zawadka); Blocked Shots: MSSU 4 (Robbs, Pierce, Wood, Hala'Api'Api), FHSU 0.

**TALE OF THE TAPE**

MSSU	CATEGORY	FHSU
8th, 67.8	Scoring Offense	10th, 65.3
2nd, 54.8	Scoring Defense	5th, 66.4
3rd, +13.0	Scoring Margin	9th, -1.1
5th, .441	Field Goal Percentage	10th, .387
4th, .343	Three-Point FG Percentage	6th, .331
9th, 6.06	Three-Point FG Made/Game	7th, 6.31
9th, .680	Free Throw Percentage	10th, .663
1st, .331	Field Goal Pct. Defense	8th, .425
1st, .271	Three-Point FG Pct. Defense	10th, .378
5th, 39.8	Rebounding Offense	8th, 38.2
2nd, 33.7	Rebounding Defense	4th, 35.0
3rd, +6.1	Rebounding Margin	4th, +3.2
T-6th, 14.88	Assists per Game	9th, 14.19
9th, 7.56	Steals per Game	2nd, 11.06
1st, 4.38	Blocked Shots per Game	T-5th, 3.19
7th, +0.69	Turnover Margin	T-5th, +0.75
5th, 0.88	Assist-Turnover Ratio	9th, 0.68
4th, 14.12	Offensive Rebounds	1st, 15.69
6th, 25.62	Defensive Rebounds	9th, 22.50

MIAA rankings through games of Jan. 19

**2007-08 STARTING FIVES**

Pierce, Hala'api'api, Wood, Kantin, DeVader.....	3-0
Marquez, Hala'api'api, Wood, Kantin, Zawadka .....	2-0
Marquez, Pierce, Wood, Kantin, Zawadka .....	2-0
Wood, Kantin, DeVader, Helfrich, Pierce .....	1-0
Wood, Marquez, DeVader, Helfrich, Pierce.....	1-0
Henderson, Marquez, Zawadka, DeVader, Pierce.....	0-1
Wood, DeVader, Davis, Helfrich, Pierce.....	1-2
Zawadka, Pierce, Wood, DeVader, Davis .....	3-0

**THE LIONS RECORD WHEN ...**

	2007-08	Under Mitts
Scoring 59 points or less .....	3-2	13-44
Scoring 60-69 points.....	4-0	40-24
Scoring 70-79 points.....	2-1	29-5
Scoring 80+ points .....	4-0	29-1
Allowing 59 points or less .....	8-1	63-8
Allowing 60-69 points .....	3-1	35-26
Allowing 70-79 points .....	1-1	10-29
Allowing 80+ points.....	1-0	3-11
Game decided by 3 pts. or less ..	3-1	20-10
Game decided by 4-9 pts. ....	2-0	29-24
Game decided by 10-19 pts. ....	4-2	30-25
Game decided by 20 or more....	4-0	32-16
Lead in rebounding.....	10-1	82-28
Trail in rebounding .....	3-1	27-38
Tie in rebounding.....	0-1	2-8
Have more turnovers .....	7-1	41-53
Have fewer turnovers.....	5-2	58-20
Tie in turnovers.....	1-0	12-1
Lead at halftime.....	11-0	85-14
Trail at halftime .....	1-3	21-54
Tied at halftime .....	1-0	5-6
Outshoot opponents (pct.).....	13-1	90-15
Opponent outshoots (pct.).....	0-2	20-58
Tie in shooting (pct.).....	0-0	1-1
Make more free throws .....	2-0	62-15
Make less free throws .....	11-3	48-55
Tie in free throws.....	0-0	2-5
Make more threes .....	9-1	75-26
Make less threes .....	4-1	32-39
Tie in threes .....	0-1	5-9
Have more assists .....	10-2	79-16
Have fewer assists .....	3-0	28-54
Tie in assists.....	0-1	3-5
Have more steals .....	7-2	77-26
Have fewer steals.....	5-0	26-39
Tie in steals .....	1-1	8-10
Get more bench points .....	11-2	61-32
Get fewer bench points .....	1-0	44-39
Tie in bench points .....	1-1	6-3
Game goes into overtime .....	0-0	4-2
In November .....	5-0	29-5
In December.....	4-0	26-8
In January.....	4-3	29-31
In February.....	0-0	23-23
In March.....	0-0	0-6
vs. Nationally-Ranked Foes .....	1-0	8-24

## THE 2007-08 LIONS AT-A-GLANCE

No.	Name	Pos.	Ht.	Yr.	Hometown/Previous School
2	Randi Henderson	G	5-4	So.	Urbana, Mo./Skyline HS
5	India Wood	G	5-7	Jr.	Decatur, Ala./Eastern Kentucky University
10	Trice Bonner	G/F	5-11	So.	Mobile, Ala./Okaloosa Walton CC
11	Ivaney Marquez	G	5-11	Jr.	Valencia, Venezuela/Grayson CC
13	Misti Johnson	G	5-6	Jr.	Gainsville, Mo./Mo Valley
15	Fatai Hala'Api'Api	C	6-1	Sr.	Maui, Hi./Eastern Kentucky University
20	Robin Kantin	G	5-8	Sr.	Silver Spring, Md./Radford (Va.) University
21	Ela Zawadka	G	5-11	Sr.	Torun, Poland/Frank Phillips
22	Danielle DeVader	G	5-9	Jr.	Holton, Kan./Holton HS
23	Lindsey Davis	G	5-8	Jr.	Wellington, Kan./Cowley CC
33	Nichole Helfrich	F	6-0	Jr.	Beech Grove, Ind./Missouri-St. Louis
42	Tynesha Pierce	F/C	6-0	Sr.	Houston, Texas/UT-Pan American
53	Brittany Vavao-Huggins	F	5-11	Fr.	Fayetteville, Ark./Fayetteville HS

Head Coach: Maryann Mitts

Assistant Coaches: Ronda Hubbard, Chris Kendrick, Tyrone Jones

### THE DISH ON SOUTHERN (13-3, 4-3 MIAA)

The Missouri Southern Lions converted 34-of-38 free throws that led to the Lions knocking off the No. 16-ranked Emporia State Lady Hornets 90-71 Wednesday night (Jan. 23) at the Leggett & Platt Athletic Center. India Wood led the Lions with a career-high 24 points and Tynesha Pierce added 22. Danielle DeVader was a perfect 10-of-10 from the free throw line to account for all of her points. The Lions led for all but the first 3:01 of the contest and was ahead 43-35 at the half. ESU cut the lead to three in the second half but Wood and Pierce combined for nine points to lead a 11-2 Lion run that put Southern back up by 12.

Fatai currently leads the Lions with 12.8 ppg and is tied for the team-lead with 6.4 rpg. She has also shot a team-best 60.7 percent from the field and has blocked a team-high 28 shots. Tynesha Pierce averages 11.0 ppg and 6.4 rpg and leads the Lions with 22 steals. Robin Kantin averages 10.5 ppg but has missed the past eight contests with a leg injury. India Wood has dished out a team-high 65 assists this season.

### THE DISH ON THE LADY TIGERS (7-9, 1-6 MIAA)

The Fort Hays State Lady Tigers dropped their fourth straight conference game by losing 74-62 at home to Central Missouri Wednesday night (Jan. 23). FHSU only trailed by three at the half and opened the second half on a 5-1 run to take a 38-37 lead, but UCM scored the next six points to go ahead by five and never trailed the rest of the way.

Sheena Kuntzsch leads FHSU in scoring (13.4 ppg) and rebounding (6.4 rpg). Brianna Willhite averages 13.0 ppg and Naomi Bancroft scores 12.4 ppg and is the Lady Tigers' top threat from three-point distance, shooting 37.1 percent (52-of-140) from beyond the arc. Meshia Mason leads the Lady Tigers with 63 assists and 34 steals.

### THE SERIES

MSSU and FHSU faced off last year for the first time since the 1988-89 season and split a pair of meetings, with the road team winning each contest. Overall, the Lady Tigers lead the series 17-11 and the Lions are only 3-11 all-time in Hays, Kan.

### HALFWAY WILL GET YOU THERE

Even though the game does not officially end at halftime, Missouri Southern has shown that if it can get the lead at the break, they know how to protect it and finish on top. The Lions are a sparkling 85-14 under Maryann Mitts when they have the edge at the half, including a perfect 11-0 this season.

### WOOD TRENDING UP IN MIAA PLAY

Junior India Wood has certainly stepped up her play in nearly all facets for the MIAA Conference season. Wood is currently the Lions' second-leading scorer in conference action with 12.7 ppg and leads the Lions with 3.7 assists per game. She has also become quite the threat from beyond the arc, knocking down 52.2 percent (12-of-23) of her three-point attempts in MIAA outings. Wood has been Lions' leading scorer in three of their four conference victories, including producing a career-high 24 points in a 90-71 win over the No. 16-ranked Emporia State Lady Hornets on Wednesday night (Jan. 23).

### STATISTICAL PACE-SETTERS

The Missouri Southern Lions are a force to be reckoned with, particularly on defense. The Lions currently lead the MIAA in field-goal percentage defense (.331), three-point field-goal percentage defense (.271) and blocks (4.38 bpg). The Lions also rank second in the league in scoring defense (54.8 ppg) and rebounding defense (33.7 rpg), while ranking third in scoring margin (+13.0 ppg) and rebounding margin (+6.1 rpg).

Individually, Fatai Hala'Api'Api leads the league in field-goal percentage (.607) and is second in blocks (1.75 bpg). Tynesha Pierce is second in offensive rebounds (3.38 rpg), while India Wood is tied for third in assists (4.06 apg) and is sixth in assist/turnover ratio (1.55).

Through games of Jan. 20, the Lions currently rank seventh in all of NCAA Division II in field-goal percentage defense and 12th in scoring defense. The Lions are 28th as a team in blocked shots.

### UP NEXT

The Lions stay on the road with an important matchup at current No. 8-ranked Washburn on Wednesday night (Jan. 30) at 5:30 p.m. in Topeka, Kan. The Lions dropped both meetings last season to the Lady Blues.

Missouri Southern Basketball

Missouri Southern Season Box Score (as of Jan 23, 2008)  
All games

RECORD:	OVERALL	HOME	AWAY	NEUTRAL
ALL GAMES.....	(13-3)	(5-2)	(5-1)	(3-0)
CONFERENCE.....	(4-3)	(2-2)	(2-1)	(0-0)
NON-CONFERENCE.....	(9-0)	(3-0)	(3-0)	(3-0)

##	Player	GP-GS	Min--Avg	---TOTAL---		---3-PTS---		FT-FTA	Pct	---REBOUNDS---				PF	FO	A	TO	Blk	Stl	Pts	Avg
				FG-FGA	Pct	3FG-FGA	Pct			Off	Def	Tot	Avg								
15	Hala'Api'Api,Fatai	16-5	321 20.1	85-140	.607	0-0	.000	34-59	.576	42	60	102	6.4	47	3	8	38	28	8	204	12.8
	Conference-Only..	7-0	147 21.0	41-67	.612	0-0	.000	13-25	.520	21	28	49	7.0	26	2	4	20	9	4	95	13.6
42	Pierce,Tynesha.....	16-14	307 19.2	76-154	.494	5-10	.500	19-30	.633	54	48	102	6.4	53	3	11	23	12	22	176	11.0
	Conference-Only..	7-7	148 21.1	36-72	.500	1-3	.333	12-18	.667	26	23	49	7.0	21	1	3	12	8	13	85	12.1
20	Kantin,Robin.....	8-8	205 25.6	28-67	.418	10-28	.357	18-24	.750	12	18	30	3.8	10	0	22	16	1	5	84	10.5
	Conference-Only..	0-0	0 0.0	0-0	.000	0-0	.000	0-0	.000	0	0	0	0.0	0	0	0	0	0	0	0	0.0
05	Wood,India.....	16-15	504 31.5	55-124	.444	19-49	.388	32-49	.653	2	54	56	3.5	28	0	65	42	0	15	161	10.1
	Conference-Only..	7-6	245 35.0	29-60	.483	12-23	.522	19-26	.731	1	23	24	3.4	18	0	26	25	0	7	89	12.7
21	Zawadka,Ela.....	16-8	403 25.2	39-99	.394	17-52	.327	11-14	.786	13	50	63	3.9	21	0	13	32	3	5	106	6.6
	Conference-Only..	7-4	216 30.9	16-56	.286	9-30	.300	8-8	1.000	6	30	36	5.1	10	0	8	15	3	3	49	7.0
10	Bonner,Trice.....	14-0	218 15.6	29-81	.358	15-35	.429	19-23	.826	14	31	45	3.2	31	0	12	27	6	17	92	6.6
	Conference-Only..	5-0	64 12.8	4-24	.167	2-10	.200	2-2	1.000	2	11	13	2.6	6	0	1	4	1	1	12	2.4
23	Davis,Lindsey.....	9-6	157 17.4	15-31	.484	1-2	.500	13-18	.722	4	9	13	1.4	19	0	17	18	2	4	44	4.9
	Conference-Only..	7-6	143 20.4	15-30	.500	1-2	.500	11-14	.786	4	9	13	1.9	15	0	15	15	2	4	42	6.0
22	DeVader,Danielle...	16-12	332 20.8	20-65	.308	19-59	.322	12-14	.857	11	29	40	2.5	30	0	31	20	2	9	71	4.4
	Conference-Only..	7-7	175 25.0	13-38	.342	12-33	.364	10-11	.909	7	17	24	3.4	13	0	13	10	2	2	48	6.9
11	Marquez,Ivaney.....	16-6	290 18.1	25-85	.294	10-42	.238	6-12	.500	34	28	62	3.9	19	0	27	20	6	13	66	4.1
	Conference-Only..	7-1	140 20.0	8-37	.216	2-19	.105	0-1	.000	16	14	30	4.3	7	0	9	8	4	5	18	2.6
33	Helfrich,Nichole...	14-5	234 16.7	15-33	.455	0-0	.000	21-25	.840	22	25	47	3.4	39	0	11	15	7	15	51	3.6
	Conference-Only..	5-3	64 12.8	6-12	.500	0-0	.000	14-16	.875	7	7	14	2.8	11	0	3	3	2	7	26	5.2
13	Johnson,Misti.....	3-0	23 7.7	4-8	.500	0-2	.000	0-0	.000	0	1	1	0.3	4	0	0	2	0	2	8	2.7
	Conference-Only..	0-0	0 0.0	0-0	.000	0-0	.000	0-0	.000	0	0	0	0.0	0	0	0	0	0	0	0	0.0
53	Vavao-Huggins,Britt	6-0	39 6.5	3-8	.375	0-0	.000	0-2	.000	1	6	7	1.2	5	0	3	2	1	1	6	1.0
	Conference-Only..	2-0	7 3.5	0-1	.000	0-0	.000	0-0	.000	0	0	0	0.0	0	0	1	1	0	0	0	0.0
02	Henderson,Randi...	16-1	167 10.4	7-15	.467	1-4	.250	0-2	.000	2	12	14	0.9	15	0	18	13	2	5	15	0.9
	Conference-Only..	7-1	51 7.3	2-4	.500	1-1	1.000	0-1	.000	0	4	4	0.6	5	0	2	6	0	0	5	0.7
	TEAM.....																				
	Conference-Only..									15	39	54	3.4	0							
										7	16	23	3.3	0							
	Total.....	16	3200	401-910	.441	97-283	.343	185-272	.680	226	410	636	39.8	321	6	238	270	70	121	1084	67.8
	Conference-Only..	7	1400	170-401	.424	40-121	.331	89-122	.730	97	182	279	39.9	132	3	85	120	31	46	469	67.0
	Opponents.....	16	3200	277-836	.331	81-299	.271	241-353	.683	203	336	539	33.7	268	3	152	281	21	85	876	54.8
	Conference-Only..	7	1400	158-399	.396	51-155	.329	101-144	.701	82	157	239	34.1	112	1	85	98	13	46	468	66.9

DATE	TIME	OPPONENT	SCORE	ATTEND	HIGH POINTS	HIGH REBOUNDS
11/16/07	5:30 p.m.	at St. Edward's	W <u>60-39</u>	297	(18)Kantin,Robin	(8)Kantin,Robin
11/17/07	1:00 p.m.	vs Incarnate Word	W <u>52-43</u>	128	(12)Bonner,Trice	(7)Pierce,Tynesha
11/23/07	5:30 pm CST	vs Saint Mary (Kan.)	W <u>66-29</u>	100	(19)Hala'Api'Api,Fatai	(12)Hala'Api'Api,Fatai
11/24/07	5:30 pm CST	vs Quincy	W <u>83-51</u>	110	(19)Hala'Api'Api,Fatai	(12)Hala'Api'Api,Fatai
11/28/07	6 PM	WEBSTER UNIVERSITY	W <u>86-36</u>	1125	(17)Bonner,Trice	(9)Pierce,Tynesha
12/1/07	1 PM	ST. EDWARD'S	W <u>60-42</u>	225	(16)Marquez,Ivaney	(7)Marquez,Ivaney
12/7/07	7 PM	at Okla. Panhandle State	W <u>59-44</u>		(18)Kantin,Robin	(10)Pierce,Tynesha
12/17/07	6:00 pm	at Northeastern State	W <u>70-62</u>	400	(13)Zawadka,Ela	(8)Hala'Api'Api,Fatai
12/19/07	7 PM	EVANGEL	W <u>79-62</u>	406	(27)Hala'Api'Api,Fatai	(10)Pierce,Tynesha
1/2/08	5:30 pm	* at Truman State Univ.	W <u>55-68</u> L	285	(12)Helfrich,Nichole	(11)Zawadka,Ela
1/5/08	5:30 PM	* MISSOURI WESTERN	W <u>72-74</u> L	1137	(26)Hala'Api'Api,Fatai	(9)Pierce,Tynesha
						(9)Hala'Api'Api,Fatai
1/9/08	5:30 PM	* PITTSBURG STATE	W <u>44-54</u> L	1642	(13)Wood,India	(7)Hala'Api'Api,Fatai
01/12/08	1:30 p.m.	* at Central Missouri	W <u>85-82</u>	1300	(22)Wood,India	(6)Pierce,Tynesha
						(6)Hala'Api'Api,Fatai
01/16/08	5:30 p.m.	* at NW Missouri State	W <u>65-64</u>	1008	(13)Wood,India	(10)Marquez,Ivaney
1/19/08	5:30 PM	* SOUTHWEST BAPTIST	W <u>58-55</u>	1979	(16)Hala'Api'Api,Fatai	(12)Hala'Api'Api,Fatai
1/23/08	5:30 PM	* EMPORIA STATE	W <u>90-71</u>	1176	(24)Wood,India	(8)Pierce,Tynesha

\* - Conference game

ATTENDANCE SUMMARY	GAMES	TOTALS	AVG/GAME
HOME.....	7	7690	1099
AWAY.....	6	3290	548
NEUTRAL.....	3	338	113
TOTAL.....	16	11318	707

# THE 2007-08 LIONS



## 2007-08 SEASON HIGHS

Points: 15, at Central Missouri, 1-12-08  
 Rebounds: 5, three times, last vs. Emporia State, 1-23-08  
 Field Goals: 5, at Central Missouri, 1-12-08  
 3-Point FG: 5, at Central Missouri, 1-12-08  
 Free Throws Made: 10, vs. Emporia State, 1-23-08  
 Assists: 6, vs. Missouri Western, 1-5-08  
 Steals: 2, three times, last vs. Evangel, 12-19-07

**22-Danielle DeVader**  
 5-9 • Jr. •  
 Guard  
 Holton, Kan.

## CAREER HIGHS

Points: 18, two times, last vs. Ozark Christian, 12-06-05  
 Rebounds: 9, two times, last vs. Washburn, 1-24-07  
 Field Goals: 6, three times, last vs. Panhandle State, 11-29-06  
 3-Point FG: 6, vs. Ozark Christian, 12-06-05  
 Free Throws Made: 10, vs. Emporia State, 1-23-08  
 Assists: 6, vs. Missouri Western, 1-5-08  
 Steals: 4, vs. Newman, 11-25-06

SEASON STATS								
GP/S	Pts.-Avg.	FG-A	3FG-A	FT-A	Reb.-Avg.	Ast.	Blk.	Stl.
16/12	71-4.4	20-65	19-59	12-14	40-2.5	31	2	9
		.308	.322	.857				

CAREER STATS								
GP/S	Pts.-Avg.	FG-A	3FG-A	FT-A	Reb.-Avg.	Ast.	Blk.	Stl.
55/36	402-7.3	124-316	98-255	56-62	176-3.2	86	14	42
		.392	.384	.903				



## 2007-08 SEASON HIGHS

Points: 22, vs. Emporia State, 1-23-08  
 Rebounds: 10, two times, last vs. Evangel, 12-19-07  
 Field Goals Made: 7, three times, last vs. Emporia State, 1-23-08  
 3-Point FG Made: 2, vs. St. Edward's, 12-1-07  
 Free Throws Made: 8, vs. Emporia State, 1-23-08  
 Assists: 2, four times, last vs. Missouri Western, 1-5-08  
 Steals: 4, at Northwest Missouri State, 1-16-08

**42-TYNESHA PIERCE**  
 6-0, Sr., Forward/  
 Center  
 Houston, Texas

## CAREER HIGHS

Points: 26, vs. Evangel, 11-24-06  
 Rebounds: 13, vs. Pittsburg State, 2-21-07  
 Field Goals Made: 11, vs. Evangel, 11-24-06  
 3-Point FG Made: 2, vs. St. Edward's, 12-1-07  
 Free Throws Made: 8, vs. Emporia State, 1-23-08  
 Assists: 2, four times, last vs. Missouri Western, 1-5-08  
 Steals: 4, two times, last at Northwest Missouri State, 1-16-08

SEASON STATS								
GP/S	Pts.-Avg.	FG-A	3FG-A	FT-A	Reb.-Avg.	Ast.	Blk.	Stl.
16/14	176-11.0	76-154	5-10	19-30	102-6.4	11	12	22
		.494	.500	.633				

CAREER STATS								
GP/S	Pts.-Avg.	FG-A	3FG-A	FT-A	Reb.-Avg.	Ast.	Blk.	Stl.
43/36	513-11.9	212-432	5-10	84-105	268-6.2	26	52	61
		.491	.500	.800				



## 2007-08 SEASON HIGHS

Points: 18, two times, last vs. Panhandle State, 12-7-07  
 Rebounds: 8, two times, last vs. St. Mary's (Kan.), 11-23-07  
 Field Goals: 7, vs. St. Edward's, 11-16-07  
 3-Point FG: 3, vs. Panhandle State, 12-7-07  
 Free Throws Made: 4, two times, last vs. Quincy, 11-24-07  
 Assists: 5, two times, last vs. St. Mary's (Kan.), 11-23-07  
 Steals: 2, vs. St. Edward's, 12-1-07

**20-Robin Kantin**  
 5-8 • Sr. •  
 Guard  
 Silver Spring, Md.

## CAREER HIGHS

Points: 20, two times, last vs. Central Methodist, 11-21-06  
 Rebounds: 12, two times, last vs. Mo. Western, 1-28-06  
 Field Goals: 10, vs. Newman (Kan.), 11-30-05  
 3-Point FG: 5, at Fort Hays State, 2-3-07  
 Free Throws Made: 9, vs. Missouri Western, 1-28-06  
 Assists: 6, at Truman State, 1-7-06  
 Steals: 6, at East Central, 12-20-05

SEASON STATS								
GP/S	Pts.-Avg.	FG-A	3FG-A	FT-A	Reb.-Avg.	Ast.	Blk.	Stl.
8/8	84-10.5	28-67	10-28	18-24	30-3.8	22	1	5
		.418	.357	.750				

CAREER STATS								
GP/S	Pts.-Avg.	FG-A	3FG-A	FT-A	Reb.-Avg.	Ast.	Blk.	Stl.
63/61	695-11.0	227-546	39-122	200-274	331-5.3	165	9	76
		.416	.320	.730				



## 2007-08 SEASON HIGHS

Points: 27, vs. Evangel, 12-19-07  
 Field Goals 12, vs. Missouri Western, 1-5-08  
 3-Point FG Made: None  
 Free Throws Made: 9, vs. Evangel, 12-19-07  
 Rebounds: 12, three times, last vs. Southwest Baptist, 1-19-08  
 Assists: 1, eight times, last vs. Emporia State, 1-23-08  
 Steals: 2, two times, last vs. Southwest Baptist, 1-19-08

**15-FATAI HALA'API'API**  
 6-1, Sr., Center  
 Lahaina, Hawaii

## CAREER HIGHS

Points: 27, vs. Evangel, 12-19-07  
 Field Goals 12, vs. Missouri Western, 1-5-08  
 3-Point FG Made: None  
 Free Throws Made: 9, vs. Evangel, 12-19-07  
 Rebounds: 14, vs. Central Missouri, 1-6-07  
 Assists: 3, vs. Emporia State, 2-7-07  
 Steals: 2, six times, last vs. Southwest Baptist, 1-19-08

SEASON STATS								
GP/S	Pts.-Avg.	FG-A	3FG-A	FT-A	Reb.-Avg.	Ast.	Blk.	Stl.
16/5	204-12.8	85-140	0-0	34-59	102-6.4	8	28	8
		.607	.000	.576				

CAREER STATS								
GP/S	Pts.-Avg.	FG-A	3FG-A	FT-A	Reb.-Avg.	Ast.	Blk.	Stl.
35/17	408-11.7	172-304	0-0	64-110	210-6.0	18	58	25
		.566	.000	.582				



**2007-08 SEASON HIGHS**

Points: 5, at Truman, 1-2-08  
 Field Goals 2, two times, last at Truman, 1-2-08  
 3-Point FG Made: 1, at Truman, 1-2-08  
 Free Throws Made: None  
 Rebounds: 4, vs. Quincy, 11-24-07  
 Assists: 4, vs. St. Mary's (Kan.), 11-23-07  
 Steals: 3, vs. St. Edward's, 12-1-07

**2-RANDI HENDERSON**  
 5-4, So., Guard  
 Urbana, Mo

**CAREER HIGHS**

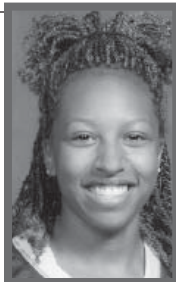
Points: 5, at Truman, 1-2-08  
 Field Goals 2, two times, last at Truman, 1-2-08  
 3-Point FG Made: 1, two times, last at Truman, 1-2-08  
 Free Throws Made: 2, two times, last vs. Southwest Baptist, 2-10-07  
 Rebounds: 4, vs. Quincy, 11-24-07  
 Assists: 4, two times, last vs. St. Mary's (Kan.), 11-23-07  
 Steals: 3, vs. St. Edward's, 12-1-07

**SEASON STATS**

GP/S	Pts.-Avg.	FG-A	3FG-A	FT-A	Reb.-Avg.	Ast.	Blk.	Stl.
16/1	15-0.9	7-15	1-4	0-2	14-0.9	18	2	5
		.467	.250	.000				

**CAREER STATS**

GP/S	Pts.-Avg.	FG-A	3FG-A	FT-A	Reb.-Avg.	Ast.	Blk.	Stl.
38/1	24-0.6	9-28	2-14	4-6	24-0.6	34	5	14
		.321	.143	.667				



**2007-08 SEASON HIGHS**

Points: 24, vs. Emporia State, 1-23-08  
 Field Goals 8, vs. Emporia State, 1-23-08  
 3-Point FG Made: 6, at Central Missouri, 1-12-08  
 Free Throws Made: 7, vs. Pittsburg State, 1-9-08  
 Rebounds: 9, vs. Panhandle State, 12-7-07  
 Assists: 9, vs. Evangel, 12-19-07  
 Steals: 4, at Central Missouri, 1-12-08

**5- INDIA WOOD**  
 5-7, Jr., Guard  
 Decatur, Ala.

**CAREER HIGHS**

Points: 24, vs. Emporia State, 1-24-08  
 Field Goals 8, vs. Emporia State, 1-24-08  
 3-Point FG Made: 6, at Central Missouri, 1-12-08  
 Free Throws Made: 7, vs. Pittsburg State, 1-9-08  
 Rebounds: 9, vs. Panhandle State, 12-7-07  
 Assists: 9, vs. Evangel, 12-19-07  
 Steals: 4, at Central Missouri, 1-12-08

**SEASON STATS**

GP/S	Pts.-Avg.	FG-A	3FG-A	FT-A	Reb.-Avg.	Ast.	Blk.	Stl.
16/15	161-10.1	55-124	19-49	32-49	56-3.5	65	0	15
		.444	.388	.653				

**CAREER STATS**

GP/S	Pts.-Avg.	FG-A	3FG-A	FT-A	Reb.-Avg.	Ast.	Blk.	Stl.
35/16	225-6.4	78-199	30-86	39-62	89-2.5	114	2	26
		.392	.349	.629				



**2007-08 SEASON HIGHS**

Points: 14, vs. Missouri Western, 1-5-08  
 Rebounds: 11, at Truman, 1-2-08  
 Field Goals Made: 5, four times, last vs. Missouri Western, 1-5-08  
 3-Point FG Made: 4, vs. Missouri Western, 1-5-08  
 Free Throws Made: 4, at Central Missouri, 1-12-08  
 Assists: 3, two times, last at Truman, 1-2-08  
 Steals: 2, at Truman, 1-2-08

**21-ELA ZAWADKA**  
 5-11, Sr.,  
 Guard  
 Torun, Poland

**CAREER HIGHS**

Points: 15, at Central Missouri, 2-14-07  
 Rebounds: 11, at Truman, 1-2-08  
 Field Goals Made: 6, at Central Missouri, 2-14-07  
 3-Point FG Made: 4, vs. Missouri Western, 1-5-08  
 Free Throws Made: 4, at Central Missouri, 1-12-08  
 Assists: 3, three times, last at Truman, 1-2-08  
 Steals: 3, vs. Truman, 12-9-06

**SEASON STATS**

GP/S	Pts.-Avg.	FG-A	3FG-A	FT-A	Reb.-Avg.	Ast.	Blk.	Stl.
16/8	106-6.6	39-99	17-52	11-14	63-3.9	13	3	5
		.394	.327	.786				

**CAREER STATS**

GP/S	Pts.-Avg.	FG-A	3FG-A	FT-A	Reb.-Avg.	Ast.	Blk.	Stl.
43/12	255-5.9	94-238	39-123	24-37	140-3.3	37	8	21
		.395	.317	.649				



**2007-08 SEASON HIGHS**

Points: 17, vs. Webster, 11-28-07  
 Field Goals Made: 7, vs. Webster, 11-28-07  
 3-Point FG Made: 3, two times, last vs. Webster, 11-28-07  
 Free Throws Made: 6, vs. Incarnate Word, 11-17-07  
 Rebounds: 6, vs. Webster, 11-28-07  
 Assists: 3, vs. Webster, 11-28-07  
 Steals: 3, three times, last vs. Northeastern State, 12-17-07

**10-TRICE BONNER**  
 5-11, So. Guard/  
 Forward  
 Mobile, Ala.

SEASON STATS								
GP/S	Pts.-Avg.	FG-A	3FG-A	FT-A	Reb.-Avg.	Ast.	Blk.	Stl.
14/0	92-6.6	29-81	15-35	19-23	45-3.2	12	6	17
		.358	.429	.826				



**2007-08 SEASON HIGHS**

Points: 16, vs. St. Edward's, 12-1-07  
 Field Goals Made: 7, vs. St. Edward's, 12-1-07  
 3-Point FG Made: 2, two times, last vs. St. Mary's (Kan.), 11-23-07  
 Free Throws Made: 3, vs. St. Edward's, 11-16-07  
 Rebounds: 10, at Northwest Missouri State, 1-16-08  
 Assists: 4, two times, last vs. Southwest Baptist, 1-19-08  
 Steals: 2, two times, last vs. St. Edward's, 12-1-07

**11-IVANEY MARQUEZ**  
 5-11, Jr., Guard  
 Valencia, Venezuela

SEASON STATS								
GP/S	Pts.-Avg.	FG-A	3FG-A	FT-A	Reb.-Avg.	Ast.	Blk.	Stl.
16/6	66-4.1	25-85	10-42	6-12	62-3.9	27	6	13
		.294	.238	.500				



**2007-08 SEASON HIGHS**

Points: 4, vs. St. Mary's (Kan.), 11-23-07  
 Field Goals Made: 2, vs. St. Mary's (Kan.), 11-23-07  
 3-Point FG Made: N/A  
 Free Throws Made: N/A  
 Rebounds: 1, vs. Webster, 11-28-07  
 Assists: N/A  
 Steals: 2, vs. Webster, 11-28-07

**13-MISTI JOHNSON**  
 5-6, Jr., Guard  
 Gainesville, Mo.

SEASON STATS								
GP/S	Pts.-Avg.	FG-A	3FG-A	FT-A	Reb.-Avg.	Ast.	Blk.	Stl.
3/0	8-2.7	4-8	0-2	0-0	1-0.3	0	0	2
		.500	.000	.000				



**2007-08 SEASON HIGHS**

Points: 15, vs. Southwest Baptist, 1-19-08  
 Field Goals Made: 6, vs. Southwest Baptist, 1-19-08  
 3-Point FG Made: 1, vs. Southwest Baptist, 1-19-08  
 Free Throws Made: 4, at Central Missouri, 1-12-08  
 Rebounds: 5, at Northwest Missouri State, 1-16-08  
 Assists: 5, at Northwest Missouri State, 1-16-08  
 Steals: 3, at Northwest Missouri State, 1-16-08

**23-LINDSAY DAVIS**  
 5-8, Jr., Guard  
 Wellington, Kan.

SEASON STATS								
GP/S	Pts.-Avg.	FG-A	3FG-A	FT-A	Reb.-Avg.	Ast.	Blk.	Stl.
9/6	44-4.9	15-31	1-2	13-18	13-1.4	17	2	4
		.484	.500	.722				



**2007-08 SEASON HIGHS**

Points: 12, at Truman, 1-2-08  
 Field Goals Made: 3, at Truman, 1-2-08  
 3-Point FG Made: None  
 Free Throws Made: 6, at Truman, 1-2-08  
 Rebounds: 8, vs. Webster, 11-28-07  
 Assists: 2, four times, last at Central Missouri, 1-12-08  
 Steals: 2, four times, last vs. Pittsburg State, 1-9-08

**33-NICHOLE HELFRICH**  
 6-0, Jr., Forward  
 Beech Grove, Ind.

SEASON STATS								
GP/S	Pts.-Avg.	FG-A	3FG-A	FT-A	Reb.-Avg.	Ast.	Blk.	Stl.
14/5	51-3.6	15-33	0-0	21-25	47-3.4	11	7	15
		.455	.000	.840				



**2007-08 SEASON HIGHS**

Points: 4, vs. Webster, 11-28-07  
 Field Goals Made: 2, vs. Webster, 11-28-07  
 3-Point FG Made: None  
 Free Throws Made: None  
 Rebounds: 3, two times, last vs. Webster, 11-28-07  
 Assists: 1, three times, last at Truman, 1-2-08  
 Steals: 1, vs. Evangel, 12-19-07

**53-BRITTANY VAVAO-HUGGINS**  
 5-11, Fr., Forward  
 Fayetteville, Ark.

SEASON STATS								
GP/S	Pts.-Avg.	FG-A	3FG-A	FT-A	Reb.-Avg.	Ast.	Blk.	Stl.
6/0	6-1.0	3-8	0-0	0-2	7-1.2	3	1	1
		.375	.000	.000				

**Game 1 • Nov. 16, 2007**  
Lions 60, St. Edward's 39

AUSTIN, TEXAS -- The Missouri Southern Lions used a stifling defensive effort and a game-high 18 points from senior Robin Kantin (Silver Spring, Md.) to record a season-opening 60-39 win over the St. Edward's Hilltoppers at the St. Edward's Shootout Friday night (Nov. 16) in Austin, Texas.

MSSU took charge with a 9-0 run to begin the second to expand a seven-point edge into a 16-point cushion with 16:29 remaining in the game.

Whitney Regian sparked an 8-2 run for the Hilltoppers by hitting a pair of free throws and a three-pointer that cut the lead to 10 with 14:09 left.

The Lions responded with a 14-4 burst over the next 6:47 to go up by 20 at 48-28 with just 7:22 left. Trice Bonner (Mobile, Ala.) and India Wood (Decatur, Ala.) each scored five points in that span to key the big run. The Lions maintained at least a 15 point lead the remainder of the contest.

MSSU (1-0) scored the game's first five points and led 9-3 at the 13:38 point of the first half. The Hilltoppers (0-1) then hit six free throws, four by Regian to gain its only lead of the game at 10-9 with 9:56 remaining in the opening half.

The Lions' suffocating defense held St. Edward's to only one field goal in the first half on only 5.6 percent shooting (1-of-18). But turnovers and foul trouble led to the Hilltoppers making 13-of-22 from the charity stripe and trailing only 23-16 at the half.

Missouri Southern (1-0)

	FG	3-PT	FT	R	PF	A	TP
Marquez *	2-5	2-3	3-4	2	1	3	9
Hala'api'api *	1-2	0-0	1-2	3	4	1	3
Wood *	3-8	1-3	0-0	5	1	2	7
Kantin *	7-7	2-2	2-2	8	2	4	18
Zawadka *	0-2	0-1	0-0	0	2	0	0
Henderson	0-0	0-0	0-0	0	1	2	0
Bonner	3-5	1-1	4-4	5	4	0	11
DeVader	0-0	0-0	0-0	0	3	0	0
Helfrich	1-2	0-0	0-0	5	4	0	2
Pierce	5-9	0-1	0-1	6	3	1	10
TOTALS	22-47	6-11	10-13	38	25	13	60
	.550	.545	.769				

St. Edward's (0-1)

	FG	3-PT	FT	R	PF	A	TP
Bartosh *	1-3	1-2	3-6	3	2	2	6
Sumler *	1-4	0-1	1-6	0	3	0	3
Tidwell *	3-12	0-4	4-4	0	2	1	10
Head *	0-2	0-0	0-0	4	3	0	0
Regian *	1-4	1-2	8-9	5	1	0	11
Lara	0-1	0-0	0-0	1	1	0	0
Nagel	0-1	0-1	0-0	0	1	2	0
Etheridge	1-5	0-2	0-1	0	0	1	2
Payton	1-4	0-1	0-0	2	0	0	2
White	0-2	0-0	3-4	0	3	0	3
Starr	0-2	0-0	0-2	0	0	0	0
Rowland	1-1	0-0	0-0	0	0	0	2
Saathoff	0-1	0-0	0-0	0	1	0	0
TOTALS	9-42	2-13	19-32	18	17	6	39
	.214	.154	.594				

Halftime: MSSU 23, STEU 16; Turnovers: MSSU 28, STEU 19; Steals: MSSU 8 (Bonner 3), STEU 6 (Bartosh, Lara 2); Blocked Shots: MSSU 4 (Marquez, Kantin, Henderson, Helfrich), STEU 0.

**Game 2 • Nov. 17, 2007**  
Lions 52, Incarnate Word 43

Austin, Texas -- The Missouri Southern women's basketball team took a lead just two minutes into the second half on a layup from Tynesha Pierce and wouldn't trail then on out, defeating Incarnate Word today, 52-43 in the team's final game at the St. Edwards University Classic in Austin.

Southern (2-0) scored the game's first points on a bucket from Fatai Hala'Api'Api in the game's first possession.

A layup from UIW's (1-1) Kim Robinson at the 16 minute mark, however, gave the Cardinals a six point lead at 10-4.

The Lions re-took the lead at 21-20 on a layup from Robin Kantin with five minutes left. Three's from Danielle DeVader, first at the three minute mark and another with just over a minute left gave the Lions a one point advantage each time, however, a free throw from UIW's Kava Cinnamon with 22 seconds left, gave the Cardinals a one point lead at the half.

Pierce tied the game at 30 with a free-throw to start the second half and her bucket just two minutes in gave the Lions a lead they wouldn't relinquish. The lead was as big as 11, after a free throw from Trice Bonner with 22 seconds remaining, one of six she made in the final 46 seconds.

Missouri Southern (2-0)

	FG	3-PT	FT	R	PF	A	TP
Hala'api'api *	2-2	0-0	1-2	2	5	0	5
Zawadka *	2-4	0-2	1-2	2	0	0	5
Wood *	1-6	1-4	0-0	1	4	6	3
Marquez *	0-1	0-1	0-0	0	0	0	0
Kantin *	3-8	1-4	4-4	2	1	5	11
Henderson	0-0	0-0	0-0	2	0	0	0
Bonner	2-3	2-2	6-6	4	3	0	12
DeVader	2-5	2-5	0-0	5	1	2	6
Helfrich	0-1	0-0	0-0	6	4	0	0
Pierce	4-12	0-0	2-4	7	4	1	10
TOTALS	16-42	6-18	14-18	34	22	14	52
	.381	.333	.778				

Incarnate Word (1-1)

	FG	3-PT	FT	R	PF	A	TP
Harvey *	1-6	0-0	4-8	5	5	0	6
Hardy *	4-7	0-1	4-7	6	2	3	12
Robinson *	2-7	0-4	0-0	5	1	2	4
Torru *	4-13	1-7	0-0	4	2	3	9
Kava *	0-4	0-4	3-4	2	1	0	3
Sledge	0-1	0-1	0-0	2	1	1	0
Greenwood	1-3	1-2	1-2	1	1	0	4
Holden	2-2	0-0	1-2	1	3	0	5
TOTALS	14-43	2-19	13-23	28	16	9	43
	.326	.105	.565				

Halftime: UIW 30, MSSU 29; Turnovers: MSSU 18, UIW 13; Steals: UIW 6 (Harvey, Hardy 2), MSSU 5 (Helfrich 2); Blocked Shots: MSSU 2 (Hala'api'api, Pierce), UIW 2 (Harvey 2).

**Game 3 • Nov. 23, 2007**  
Lions 66, St. Mary's (Kan.) 29

Pittsburg, Kan. - The Missouri Southern Lions held the St. Mary's (Kan.) Spires to a four-percent (1-of-25) shooting percentage in the first half and rolled to a 66-29 win in action at the Pittsburg State Pizza Hut/Comfort Inn Classic Friday night (Nov. 23) in Pittsburg, Kan.

The Lions (3-0) roared out of the gate as seniors Fatai Hala'api'api (Maui, Hawaii) and Tynesha Pierce (Houston, Texas) combined for 14 points in a 15-0 MSSU spurt to begin the game.

The Spires' (3-3) followed that with their lone field goal of the first half that came on a jumper by Jamie Mireles at the 9:39 mark.

Southern then went on a 16-3 run that featured a pair of treys by Trice Bonner (Mobile, Ala.) that put the Lions on top 31-5 with 2:34 remaining in the first half.

The Lions went on to lead 38-7 at halftime

A three-pointer by Ivaney Marquez (Valencia, Venezuela) and a free throw from Fatai gave the Lions their largest lead to that point at 42-7 just 3:10 into the second half.

Katie Joens then scored seven points in a 9-4 St. Mary's run to pull the Spires within 30 with 13:47 left, but the Lions gained their biggest lead of the night with a 16-4 burst that was capped by a three-pointer from Bonner to go ahead 62-20 with 3:43 left.

Missouri Southern (3-0)

	FG	3-PT	FT	R	PF	A	TP
Marquez *	2-6	2-6	0-0	2	2	2	6
Pierce *	7-15	0-0	0-0	6	3	0	14
Wood *	2-7	0-2	1-1	3	1	1	5
Kantin *	2-11	0-1	1-3	8	0	5	5
Zawadka *	0-1	0-0	0-0	7	2	0	0
Henderson	0-3	0-1	0-0	3	0	4	0
Bonner	3-7	3-4	2-2	2	2	2	11
Johnson	2-3	0-1	0-0	0	1	0	4
Hala'api'api	6-11	0-0	7-8	12	0	0	19
DeVader	0-2	0-2	0-0	1	3	1	0
Helfrich	1-2	0-0	0-0	2	3	2	2
Vavao-Huggins	0-2	0-0	0-0	0	1	1	0
TOTALS	25-70	5-17	11-14	50	18	18	66
	.357	.294	.786				

St. Mary's (Kan.) (3-3)

	FG	3-PT	FT	R	PF	A	TP
Helm *	1-6	0-1	2-4	7	1	0	4
Leonard *	1-11	0-1	6-6	5	4	0	8
Teal *	0-1	0-0	0-0	1	0	0	0
Jacobs *	0-0	0-0	0-0	0	2	0	0
Gillispie *	0-5	0-4	0-0	2	2	0	0
Todd	0-0	0-0	0-0	1	1	0	0
Joens	2-5	1-2	4-4	1	3	2	9
Mireles	1-10	0-5	2-2	3	0	0	4
Shea	0-1	0-1	0-0	1	1	1	0
Packham	0-1	0-0	0-0	1	1	0	0
Garcia	2-9	0-0	0-0	7	1	0	4
TOTALS	7-49	1-14	14-16	38	16	3	29
	.326	.105	.565				

Halftime: MSSU 38, St. Mary's 7; Turnovers: St. Mary's 27, MSSU 14; Steals: MSSU 5 (Pierce 3), St. Mary's 3 (Leonard 2); Blocked Shots: MSSU 6 (Hala'api'api 5), St. Mary's 1 (Shea).

**Game 4 • Nov. 24, 2007**  
Lions 83, Quincy 51

Pittsburg, Kan. - Fatai Hala'api'api (Maui, Hawaii) shot a perfect 9-of-9 from the field and scored 19 points and pulled down 12 rebounds to lead the Missouri Southern Lions to a 4-0 start with an 83-51 win over the Quincy Lady Hawks in the final night of the Pittsburg State Pizza Hut/Comfort Inn Classic Saturday night (Nov. 24) in Pittsburg, Kan.

The game was close through much of the first half but the Lions took control with an 18-4 run to snap a 13-13 tie and surge ahead 31-17 with 34 seconds left in the first half.

India Wood (Athens, Ala.) and Danielle DeVader (Holton, Kan.) combined for 14 points during that span, with Wood hitting a trey and converting a three-point play and DeVader knocking in a pair of threes in that stretch. The Lions led 31-18 at the half.

MSSU expanded the lead in the second half behind a 61.3 percent (19-of-31) offensive explosion from the field.

The Lions outscored the Lady Hawks 19-10 to begin the second half and led 50-28 with 14:56 remaining after Fatai converted consecutive field goals.

Southern later went on a 10-0 run to turn a 20-point advantage into a commanding 66-36 lead with 8:52 left in the second half. The Lions then obtained their biggest advantage of the night when Robin Kantin (Silver Spring, Md.) hit from three-point distance to make it 71-37 just 1:51 later.

## Missouri Southern (4-0)

	FG	3-PT	FT	R	PF	A	TP
Pierce *	0-3	0-0	1-2	2	5	0	1
Hala'api'api	9-9	0-0	1-2	12	1	1	19
Wood *	5-10	1-3	2-3	6	1	3	13
Kantin *	4-11	2-4	4-4	4	2	2	14
DeVader *	3-5	3-5	0-0	1	3	1	9
Henderson	0-1	0-0	0-1	4	1	3	0
Bonner	2-9	1-3	1-2	4	1	2	6
Marquez	1-4	0-2	0-1	4	1	4	2
Johnson	1-2	0-0	0-0	0	0	0	2
Zawadka	5-10	3-7	0-0	2	0	3	13
Helfrich	1-2	0-0	0-0	5	3	1	2
Vavao-Huggins	1-1	0-0	0-0	3	1	0	2
TOTALS	32-67	10-24	9-15	53	19	20	83
	.478	.417	.600				

## Quincy (2-2)

	FG	3-PT	FT	R	PF	A	TP
Stellflue *	3-17	1-8	6-8	5	3	3	13
Burgin *	3-9	1-3	2-2	2	3	0	9
Young *	1-4	1-2	1-2	4	2	0	4
Irby *	1-7	0-1	0-0	6	1	3	2
Keller *	3-14	1-3	0-0	5	1	1	7
Gavlick	4-7	0-0	0-1	2	0	1	8
King	0-0	0-0	1-2	0	0	0	1
Lumley	0-0	0-0	0-0	0	0	0	0
Vaughn	0-3	0-0	0-0	0	0	0	0
Shuman	0-1	0-0	0-0	2	0	0	0
Ballenger	1-1	0-0	2-2	1	1	0	4
Koehler	1-4	0-0	1-4	6	1	0	3
TOTALS	17-67	4-17	13-21	38	12	8	51
	.254	.235	.619				

Halftime: MSSU 31, QU 18; Turnovers: MSSU 17, QU 13; Steals: MSSU 4 (Bonner 2), QU 4 (Keller 2); Blocked Shots: MSSU 4 (Hala'api'api 3), QU 3 (Keller 2).

**Game 5 • Nov. 28, 2007**  
Lions 86, Webster 36

Joplin, Mo. - Missouri Southern head coach Maryann Mitts won her 103rd game to move into second-place on the MSSU all-time wins list as the Lions defeated the Webster Gorloks 86-36 Wednesday night (Nov. 28) at the Leggett & Platt Athletic Center. The win moves the Lions to a perfect 5-0 on the season.

The outcome was never in doubt as the Lions scored the first eight points of the game behind five early points from Robin Kantin (Silver Spring, Md.).

MSSU later built the lead to 20 with a 15-2 run over a 5:15 span to lead 27-7 with 10:21 remaining in the first half.

After Julie McGirl made a layup to bring the Gorloks to within 18, the Lions ripped off an 8-0 spurt that was capped by an Ela Zawadka (Torun, Poland) layup to lead 35-9.

The Lions then out-scored Webster 11-5 over the next 4:29 as India Wood (Decatur, Ala.) converted a layup to put the Lions on top 46-14 with 1:11 left in the opening half. Southern would lead 46-16 at the half.

The second half would not be any different as Kantin scored five points to lead a 9-2 Southern run after halftime that made it 55-18 in favor of the Lions with 15:47 remaining.

The largest lead of the night came when Brittany Vavao-Huggins (Fayetteville, Ark.) hit a jumper with 1:57 remaining to give the Lions an 86-35 lead.

## Missouri Southern (5-0)

	FG	3-PT	FT	R	PF	A	TP
Wood *	4-6	0-1	0-0	2	0	3	8
Hala'api'api *	4-6	0-0	2-4	4	1	0	10
Kantin *	4-6	2-4	1-2	1	2	1	11
DeVader *	0-4	0-3	0-0	2	0	3	0
Pierce *	5-10	0-0	0-0	9	3	2	10
Henderson	1-3	0-2	0-0	0	4	2	2
Bonner	7-11	3-5	0-1	6	4	3	17
Marquez	3-9	2-5	0-1	5	1	1	8
Johnson	1-3	0-1	0-0	1	3	0	2
Zawadka	3-4	1-2	1-2	3	1	0	8
Helfrich	1-4	0-0	4-4	8	1	2	6
Vavao-Huggins	2-3	0-0	0-2	3	2	1	4
TOTALS	35-69	8-23	8-16	46	22	18	86
	.507	.348	.500				

## Webster (2-2)

	FG	3-PT	FT	R	PF	A	TP
McQueen *	0-4	0-2	2-2	6	2	6	2
McGill *	3-8	0-0	3-5	1	3	0	9
Goedeker *	0-1	0-0	0-0	1	3	0	0
Chesnek *	0-1	0-0	0-0	1	4	0	0
Meyer *	3-13	1-6	0-0	4	0	0	7
Venegoni	2-4	0-1	2-4	2	1	0	6
Wamser, R.	0-1	0-0	0-0	0	0	0	0
Martin	1-4	1-2	2-2	0	1	1	5
Wamser, J.	1-5	1-5	0-0	5	0	0	3
Vahey	0-3	0-0	1-4	5	1	2	1
VanGennip	0-0	0-0	1-4	1	0	2	1
Gellnett	1-2	0-0	0-0	1	0	0	2
TOTALS	11-46	3-16	11-21	34	15	9	36
	.239	.188	.524				

Halftime: MSSU 46, WU 16; Turnovers: WU 29, MSSU 14; Steals: MSSU 13 (Bonner 3), WU 2 (McQueen, VanGennip); Blocked Shots: MSSU 5 (Helfrich 2), WU 0.

**Game 5 • Nov. 28, 2007**  
Lions 86, Webster 36

Joplin, Mo. - Ivaney Marquez (Valencia, Venezuela) scored a career-high 16 points and the Missouri Southern Lions used another inspiring defensive performance to improve to 6-0 by defeating the St. Edward's Hilltoppers for the second time this season, 60-42 Saturday afternoon (Dec. 1) at the Leggett & Platt Athletic Center.

The Lions also knocked off the Hilltoppers 60-39 back on Nov. 16 at the St. Edward's Shootout in Austin, Texas in the season-opener for both squads.

Southern came out of the gates a bit sluggish, missing their first seven shots and falling into an early 7-0 hole with 14:01 left in the first half.

But Trice Bonner (Mobile, Ala.) knocked down a three-pointer for the Lions' first field-goal with 13:07 left in the half and that sparked a 7-0 Lions spurt that tied the game.

Tynesha Pierce (Houston, Texas) then hit her first two career three-pointers to lead a 13-5 run as the Lions jumped ahead 20-12 with 7:42 remaining in the first half.

The Lions led by as many as 10 in the opening half before taking a 31-23 advantage at halftime.

After the Hilltoppers trimmed the lead to 37-31, Marquez made three consecutive layups and contributed two steals as the Lions outscored STEU 8-0 over the next 3:06 to lead 45-31 with 10:45 left in the game.

The Hilltoppers (2-5) got no closer than 11 the rest of the way.

## Missouri Southern (6-0)

	FG	3-PT	FT	R	PF	A	TP
Wood *	0-4	0-2	0-2	0	2	4	0
Hala'api'api *	5-8	0-0	0-1	3	4	1	10
Kantin *	0-3	0-1	0-0	2	0	1	0
DeVader *	1-3	1-3	2-2	2	0	1	5
Pierce *	3-6	2-2	1-2	2	3	0	9
Henderson	2-2	0-0	0-0	0	3	3	4
Bonner	1-8	1-2	2-2	5	4	0	5
Marquez	7-10	1-3	1-3	7	2	2	16
Johnson	1-3	0-1	0-0	1	3	0	2
Zawadka	2-4	0-2	0-0	6	2	1	4
Helfrich	2-3	0-0	3-5	1	2	0	7
TOTALS	23-51	5-15	9-17	32	22	13	60
	.451	.333	.529				

## St. Edward's (2-5)

	FG	3-PT	FT	R	PF	A	TP
Bartosh *	1-7	0-2	4-8	5	2	2	6
Regian *	2-6	2-3	5-6	3	4	1	11
Sumler *	1-2	0-0	0-0	2	4	0	2
Tidwell *	3-11	2-5	6-8	3	1	0	14
Head *	0-4	0-0	5-6	10	5	1	5
Lara	0-0	0-0	0-0	1	0	0	0
Nagel	0-1	0-1	0-0	4	1	0	0
Etheridge	0-1	0-1	0-0	0	0	0	0
Payton	0-2	0-0	0-0	1	1	0	0
White	0-1	0-0	0-0	0	1	0	0
Starr	0-1	0-1	0-0	1	0	0	0
Rowland	0-1	0-0	0-0	1	0	0	0
Saathoff	2-6	0-0	0-0	3	1	0	4
TOTALS	9-43	4-13	20-28	38	20	4	42
	.209	.308	.714				

Halftime: MSSU 31, STEU 23; Turnovers: STEU 27, MSSU 18; Steals: MSSU 14 (Henderson 3), STEU 4 (Sumler, Tidwell 2); Blocked Shots: MSSU 6 (Hala'api'api 3), STEU 2 (Sumler, Rowland).

### Game 7 • Dec. 7, 2007 Lions 59, OPSU 44

Goodwell, Okla. - Robin Kantin went on a 7-0 run of her own in the second half to help vault the Missouri Southern Lions to a pivotal 59-44 regional win tonight at Oklahoma Panhandle State University.

Southern (7-0) fell down 7-0 early to the Lady Aggies, but a jumper from Tynesha Pierce put the Lions on the board.

A layup from OPSU's (4-4) Ro Wilson made the score 9-2, but jumpers from Fatai Hala'Api'Api and India Wood, as well as a three from Robin Kantin tied the game at nine at the 13 minute mark.

A three from Trice Bonner with 10 minutes left gave Southern its first lead of the game at 15-13 and a jumper from Ela Zawadka a minute later pushed the Lions' lead to 17-14 with 9:41 left. The Lady Aggies went on a 7-0 run behind a three from Sarah Polson and a jumper from Alisha Sladek, as well as a layup from Cherrelle Tillis, giving OPSU a 20-17 lead with 4:58 left.

After a Lady Aggie free throw, Kantin and Wood hit back-to-back jumpers to tie the game at 21 heading into the locker room at the half.

Wood put the Lions back on top hitting a jumper right out of the locker room to start the half. Back-to-back scores from Pierce extended the Lions' lead to 29-24 with 17:32 left in the game, but a three from Polson got the Lady Aggies back to within one, (29-28) with 16:37 left.

That would be as close as OPSU would get. A three from Kantin gave the Lions a nine point advantage (45-36) with 8:26 left and a three from Pierce just 26 seconds later made the lead 11. The Lions would lead by as much as 17 after a three from India Wood, her third of the game, made the score 59-42 with three minutes left.

#### Missouri Southern (7-0)

	FG	3-PT	FT	R	PF	A	TP
Wood *	6-11	3-7	0-0	9	0	3	15
Marquez *	0-4	0-0	0-0	5	1	1	0
Kantin *	6-15	3-10	3-6	3	2	4	18
Zawadka *	1-3	0-1	0-0	3	0	0	2
Pierce *	5-8	1-1	0-0	10	3	2	11
Henderson	1-1	0-0	0-0	0	1	1	2
Bonner	2-3	1-2	0-0	1	3	1	5
Hala'api'api	3-9	0-0	0-4	6	1	1	6
DeVader	0-4	0-4	0-0	2	3	3	0
Helfrich	0-2	0-0	0-0	1	4	1	0
TOTALS	24-60	8-25	3-10	45	18	17	59
	.400	.320	.300				

#### Okla. Panhandle State (4-4)

	FG	3-PT	FT	R	PF	A	TP
Sladek *	3-8	0-2	0-1	2	2	0	6
Polson *	2-10	2-9	0-0	9	4	1	6
Watkins *	1-1	0-0	1-1	1	1	0	3
Maas *	0-1	0-1	0-4	4	2	1	0
Wilson *	5-16	0-0	1-2	12	1	0	11
Terry	0-4	0-4	0-0	1	0	1	0
Cramer	0-0	0-0	0-0	0	1	0	0
Tillis	2-11	0-2	6-8	6	3	1	10
Brown	2-10	0-2	4-9	2	1	1	8
Ortega	0-0	0-0	0-0	0	0	0	0
Rogic	0-0	0-0	0-0	0	1	0	0
TOTALS	15-61	2-20	12-25	46	16	5	44
	.246	.100	.480				

Halftime: MSSU 21, OPSU 21; Turnovers: MSSU 18, OPSU 16; Steals: OPSU 11 (Polson, Tillis 3), MSSU 8 (Wood, Bonner 2); Blocked Shots: MSSU 7 (Hala'api'api 3), OPSU 0.

### Game 8 • Dec. 17, 2007 Lions 70, NSU 62

Tahlequah, Okla. - The No. 24-ranked Missouri Southern Lions used an inspired second half and held on to defeat the Northeastern State Riverhawks 70-62 to improve to a perfect 8-0 on the season Monday night (Dec. 17) in Tahlequah, Okla.

The first half was a see-saw affair and with Southern trailing 31-28, Trice Bonner knocked in a trey and converted two free-throws to give the Lions a 33-31 advantage at the break.

The Lions opened the second half on a 7-0 run to take a 40-31 lead. Tynesha Pierce hit a three-pointer and a layup and India Wood nailed a jumper in transition to key the spurt.

The Riverhawks' Verressa Gaston then converted a three-point play to cut the lead to 40-34, but Ela Zawadka put in one of her three treys on the night to put the Lions back up by nine at 43-34 with 14:58 left.

Southern later out-scored the Riverhawks (3-7) 10-4 over a stretch of 3:45 as Ivaney Marquez capped it with a three-pointer to give the Lions their largest lead of the night at 64-48 with 5:34 remaining in the game.

After the Riverhawks trimmed the lead down to nine, Bonner rebounded her own missed shot and hit a jumper to give the Lions a 68-57 lead with 1:34 left.

But NSU wasn't through as Katie Beshoner made a layup and Sarah Miller hit from long-range to make it 68-62 with 51 seconds remaining.

Wood then missed the front end of a one-on-one opportunity but Marquez made a critical steal on the defensive end and then knocked down a pair of big free throws that put the Lions up by the final margin of 70-62.

#### #24 Missouri Southern (8-0)

	FG	3-PT	FT	R	PF	A	TP
Wood *	3-6	0-2	5-7	5	0	8	11
Kantin *	2-6	0-2	3-3	2	1	0	7
DeVader *	0-2	0-2	0-1	1	1	5	0
Helfrich *	2-3	0-0	0-0	2	3	0	4
Pierce *	4-5	1-2	0-0	1	5	0	9
Henderson	0-0	0-0	0-0	0	0	1	0
Bonner	4-7	1-4	2-4	4	3	2	11
Marquez	1-2	1-1	2-2	1	0	1	5
Hala'api'api	5-11	0-0	0-1	8	3	0	10
Zawadka	5-7	3-5	0-0	2	2	1	13
Davis	0-0	0-0	0-0	0	3	0	0
TOTALS	26-49	6-18	12-18	28	21	18	70
	.531	.333	.667				

#### Northeastern State (3-7)

	FG	3-PT	FT	R	PF	A	TP
Sams *	1-5	0-3	0-0	4	4	7	2
Quintana *	1-10	0-5	0-0	0	1	1	2
Gaston *	3-7	0-0	6-6	6	3	0	12
White *	1-3	1-2	5-6	1	1	3	8
Gordon *	4-6	0-0	0-0	3	2	0	8
Webb	3-4	0-0	0-0	3	3	1	6
Hunter	2-4	2-3	2-2	2	2	0	8
Barnhill	3-5	1-2	2-4	3	3	2	9
Millar	1-3	1-3	0-0	0	1	0	3
Jent	1-2	0-0	0-0	1	0	0	2
Beshoner	1-1	0-0	0-1	1	0	1	2
TOTALS	21-50	5-18	15-19	31	20	15	62
	.420	.278	.789				

Halftime: MSSU 33, NSU 31; Turnovers: NSU 16, MSSU 14; Steals: MSSU 9 (Bonner 3), NSU 3 (Sams, Gordon, Webb); Blocked Shots: MSSU 2 (Bonner, Hala'api'api), NSU 0.

### Game 9 • Dec. 19, 2007 Lions 79, Evangel 62

Joplin, Mo. - Fatai Hala'Api'Api and Tynesha Pierce combined for 44 points to lead the No. 23-ranked Missouri Southern Lions to a 79-62 win over the Evangel Lady Crusaders in their non-conference finale Wednesday night (Dec. 19) at the Leggett & Platt Athletic Center.

The 23rd ranked Lions finish the non-conference portion of their schedule at 9-0, including a perfect 6-0 in the South Central Region.

The Lions led throughout and gained their largest lead of the night as India Wood knocked in a three-pointer to put Southern up 54-36 with 14:02 remaining in the game.

Evangel (2-7) fought back and out-scored the Lions 7-0 over the next 2:41 to come within 54-43 on a trey from Katie Burger.

Southern then gained more breathing room with a 16-10 run and jumped back ahead 70-53 after a pair of free throw by Fatai with 4:25 remaining.

The Lady Crusaders would not go away though and went on a 7-1 spurt that was sparked by five points from Megan Jewell to claw back within 71-60 with 2:42 left in the contest.

But Fatai helped Southern put it away with six points over the next 2:11 as the Lions ended the game on an 8-2 run.

The Lions jumped on Evangel early by scoring 13 of the game's first 15 points as Ela Zawadka knocked in a three and made two jumpers in that span that helped the Lions lead 13-2.

Southern led by as many as 17 on two occasions in the first half, with the last coming after two free throws from Fatai put the Lions up 39-22 with 2:17 left in the first half.

The Lions went on to lead 42-28 at the half.

#### #23 Missouri Southern (9-0)

	FG	3-PT	FT	R	PF	A	TP
Wood *	2-6	1-2	5-10	1	1	9	10
Marquez *	1-7	0-2	0-0	6	4	4	2
DeVader *	1-2	1-2	0-0	2	3	2	3
Helfrich *	1-2	0-0	0-0	3	4	2	2
Pierce *	7-14	0-1	3-3	10	3	2	17
Henderson	1-1	0-0	0-0	1	0	0	2
Bonner	1-4	0-2	0-0	1	1	1	2
Hala'api'api	9-15	0-0	9-10	3	2	0	27
Zawadka	5-8	1-2	1-2	2	2	0	12
Davis	0-1	0-0	2-4	0	1	2	2
Vavao-Huggins	0-1	0-0	0-0	1	1	0	0
TOTALS	28-61	3-11	20-29	31	22	22	79
	.459	.273	.690				

#### Evangel (2-7)

	FG	3-PT	FT	R	PF	A	TP
Hargus *	2-8	2-5	2-2	3	1	0	8
Burger *	3-4	1-1	2-2	5	3	0	9
Mingus *	2-6	1-2	2-2	0	1	1	7
Prentice *	0-2	0-0	0-0	2	1	0	0
Luko *	2-3	0-0	2-2	2	3	2	6
Haraldson	1-1	0-0	2-2	1	2	0	4
Michener	1-1	0-0	1-2	0	2	0	3
Russell	1-3	0-2	2-2	2	2	0	4
Jewell	2-5	2-2	10-10	3	2	3	16
Hogan	2-3	1-2	0-0	3	3	2	5
Pollard	0-0	0-0	0-0	0	4	0	0
TOTALS	16-36	7-14	23-24	29	24	8	62
	.444	.500	.958				

Halftime: MSSU 42, EU 28; Turnovers: EU 23, MSSU 9; Steals: MSSU 9 (Wood, Marquez, DeVader 2), EU 0; Blocked Shots: MSSU 3 (Hala'api'api 2), EU 0.

### Game 10 • Jan. 2, 2008 Truman 68, #16 Lions 55

Kirkville, Mo. - Georgia Mueller scored a game-high 27 points as the Truman Bulldogs handed the No. 16-ranked Missouri Southern Lions their first loss of the season, 68-55 in the MIAA opener for both schools Wednesday night (Jan. 2) in Kirkville, Mo.

After Trice Bonner capped a 7-0 Lion run with a layup that gave Southern its first lead of the game at 43-41, the Bulldogs out-scored the Lions 24-5 over the next 8:06 to take a commanding 65-48 lead with 5:09 left in the game.

Nichole Helfrich then scored the next seven points to pull Southern within 65-55 with 2:16 left, but Truman (9-1, 1-0 MIAA) hit three free throws down the stretch to ice the victory.

The Bulldogs led throughout the first half and jumped ahead 9-3 as Mueller scored five quick points in the first four minutes of the game.

Fatai Hala'Api'Api hit a pair of jumpers to bring the Lions to 11-10, but the Bulldogs scored the next six and led 17-10 with 12:37 remaining in the first half.

The Lions (9-1, 0-1 MIAA) battled back and tied the score at 19-19 as Randi Henderson nailed a three-pointer and converted a layup in a 9-2 spurt.

Truman stretched the lead to 32-24 before settling for a 35-29 advantage at the half.

#### #16 Missouri Southern (9-1, 0-1 MIAA)

	FG	3-PT	FT	R	PF	A	TP
Henderson *	2-4	1-1	0-1	1	2	2	5
Marquez *	0-6	0-4	0-0	3	1	0	0
Zawadka *	0-5	0-3	0-0	11	2	3	0
DeVader *	2-6	2-6	0-0	4	3	1	6
Pierce *	5-13	0-0	1-2	9	5	0	11
Wood	2-9	0-4	3-5	1	0	1	7
Bonner	2-11	1-4	0-0	4	1	1	5
Hala'api'api	3-6	0-0	3-4	1	5	1	9
Davis	0-0	0-0	0-0	0	1	0	0
Helfrich	3-5	0-0	6-7	5	4	0	12
Vavao-Huggins	0-1	0-0	0-0	0	0	1	0
TOTALS	19-66	4-22	13-19	42	24	10	55
	.288	.182	.684				

#### Truman (9-1, 1-0 MIAA)

	FG	3-PT	FT	R	PF	A	TP
Fowler *	1-3	0-1	2-2	6	1	1	4
Montebello *	3-5	0-1	2-3	4	5	2	8
McGee, Can. *	7-16	4-10	1-3	2	2	2	19
McGee, Car. *	0-6	0-4	4-8	8	1	2	4
Mueller *	9-16	0-0	9-10	12	3	1	27
Guinn	1-3	0-2	2-2	1	1	0	4
Joya	0-0	0-0	2-2	1	1	0	2
Kiecker	0-2	0-0	0-0	4	2	2	0
TOTALS	21-51	4-18	22-30	42	16	10	68
	.444	.500	.958				

Halftime: TSU 35, MSSU 29; Turnovers: TSU 15, MSSU 12; Steals: MSSU 8 (Zawadka, Pierce, Helfrich 2), TSU 5 (Montebello, McGee, Can., McGee, Car., Mueller, Guinn); Blocked Shots: TSU 2 (Mueller 2), MSSU 1 (Hala'api'api).

### Game 11 • Jan. 5, 2008 Missouri Western 74, #16 Lions 72

Joplin, Mo. - The No. 16-ranked Missouri Southern Lions lost a see-saw affair to the Missouri Western Griffons, 74-72 in their MIAA home opener Saturday night (Jan. 5) at the Leggett & Platt Athletic Center.

The game featured 18 lead changes, including 12 in the deciding second half. With the game tied 57-57, the Griffons (6-4, 1-1 MIAA) took the lead for good on a layup from Chemia Woods with 8:31 remaining.

A pair of threes from Jill Johnson and Tierra Ford helped the Griffons build the advantage to 71-62 when the Lions (9-2, 0-2 MIAA) began making their surge.

The Lions out-scored Western 8-0 over the next 3:25 behind a jumper and a trey from Ela Zawadka. One free throw from Fatai Hala'Api'Api brought Southern to within 71-70 with 1:34 left in the game.

Yanique Javois then split a pair of free throws for the Griffons, but the Lions failed to score on the offensive end and two free throws from Ford sealed the victory for Western.

Things started well for Southern as Zawadka and Danielle DeVader each connected from long-distance as the Lions jumped out to an 11-4 lead just 4:44 into the contest.

Fatai then scored the next seven Lion points over the next 3:09 to stretch the lead to 18-9 with 12:07 left in the first half.

MWSU answered with a 9-0 run and tied the score on a jumper from Colleen Schnieder at 18-18.

Ford gave the Griffons their first lead since the 19:25 mark on a three-pointer that made it 21-20 with 6:14 remaining in the opening half.

The Lions regained the lead at 27-26 on a trey from Zawadka but Javois answered with a three of her own to put Western back on top and the Griffons went on to lead 33-30 at the half.

#### #16 Missouri Southern (9-2, 0-2 MIAA)

	FG	3-PT	FT	R	PF	A	TP
Wood *	2-5	1-2	0-0	3	2	8	5
DeVader *	3-9	2-7	0-0	5	1	6	8
Davis *	1-2	0-0	2-2	3	3	3	4
Helfrich *	0-0	0-0	2-3	2	1	1	2
Pierce *	4-7	0-0	0-1	9	2	2	8
Henderson	0-0	0-0	0-0	0	1	0	0
Bonner	1-3	1-2	2-2	1	0	0	5
Marquez *	0-3	0-2	0-0	1	1	0	0
Hala'Api'Api	12-14	0-0	2-9	9	3	0	26
Zawadka	5-9	4-6	0-0	3	2	2	14
TOTALS	28-52	8-19	8-17	36	16	22	72
	.538	.421	.471				

#### Missouri Western (6-4, 1-1 MIAA)

	FG	3-PT	FT	R	PF	A	TP
Nolke *	2-9	0-4	0-0	2	3	1	4
Woods *	2-7	0-0	3-5	4	1	8	7
Johnson *	7-13	1-3	4-6	10	3	3	19
Javois *	9-18	3-5	4-7	4	3	1	25
Ford *	6-12	3-7	2-2	6	3	2	17
Gawatz	0-0	0-0	0-0	0	0	0	0
Luteyn	0-1	0-0	0-0	2	1	0	0
Schnieder	1-1	0-0	0-0	3	1	0	2
TOTALS	27-61	7-19	13-20	34	15	15	74
	.443	.368	.650				

Halftime: MWSU 33, MSSU 30; Turnovers: MSSU 19, MWSU 12; Steals: MSSU 5 (Pierce 2), MWSU 5 (Woods 3); Blocked Shots: MSSU 4 (Davis, Pierce, Marquez, Hala'Api'Api), MWSU 0.

### Game 12 • Jan. 9, 2008 Pittsburg State 54, #23 Lions 44

Joplin, Mo. - The No. 23-ranked Missouri Southern Lions lost for the first time in five outings to the Pittsburg State Gorillas, 54-44 Wednesday night (Jan. 9) at the Leggett & Platt Athletic Center.

The Lions (9-3, 0-3 MIAA) grabbed the lead in the second half with a 9-0 run sparked by a three-point play by Nichole Helfrich to lead 32-31 with 14:33 left.

But the Gorillas (8-4, 2-1 MIAA) answered with a 9-0 run of their own to regain the lead for good at 40-32 with 11:02 remaining in the game.

MSSU fell behind by as many as 12 on two occasions, but fought back to within eight on a three-pointer from Danielle DeVader that made it 52-44 with 1:03 left.

But that was as close as the Lions could get DePrice Taylor clinched the win by hitting a pair of free throws with 27 seconds left.

The opening minutes of the game started out great for the Lions as they jumped out early on PSU by scoring the first six points of the game that included four quick points from India Wood.

The Lions continued the early surge as consecutive layups from Fatai Hala'Api'Api and Wood gave MSSU a 10-2 lead with 14:28 remaining in the first half.

The quick start was keyed by the Lions forcing the Gorillas to miss nine of their first 10 shot-attempts.

Pitt State carried the momentum into the locker room by out-scoring the Lions 7-0 to end the first half that was capped by a layup by Taylor with 17 seconds left in the half.

#### #23 Missouri Southern (9-3, 0-3 MIAA)

	FG	3-PT	FT	R	PF	A	TP
Wood *	3-9	0-2	7-10	6	4	3	13
DeVader *	3-10	3-10	0-0	3	2	0	9
Davis *	1-5	0-1	0-0	2	2	3	2
Helfrich *	1-3	0-0	1-1	3	3	0	3
Pierce *	3-7	0-0	0-1	2	3	0	6
Henderson	0-0	0-0	0-0	2	1	0	0
Bonner	0-4	0-2	0-0	3	1	0	0
Marquez	0-2	0-2	0-0	4	1	2	0
Hala'Api'Api	4-12	0-0	1-3	7	3	0	9
Zawadka	1-8	0-3	0-0	5	0	0	2
TOTALS	16-60	3-20	9-15	41	20	8	44
	.267	.150	.600				

#### Pittsburg State (8-4, 2-1 MIAA)

	FG	3-PT	FT	R	PF	A	TP
Witte *	1-7	1-6	0-0	1	2	0	3
Buchanan *	7-16	3-5	4-5	10	1	2	21
Taylor *	4-14	0-2	3-7	7	1	0	11
Sloan *	0-0	0-0	0-0	0	0	0	0
Glenn *	3-8	0-0	2-3	7	4	0	8
Demarest	1-3	0-1	1-2	5	2	1	3
Waugh	1-3	1-3	0-0	2	0	0	3
Igbinigie	0-1	0-0	0-0	3	1	0	0
Martin	0-0	0-0	0-0	0	0	0	0
Hinkin	0-3	0-1	0-0	2	0	3	0
Poppe	0-1	0-0	0-0	0	0	0	0
Troutman	0-3	0-0	5-6	15	2	0	5
TOTALS	17-59	5-18	15-23	55	13	6	54
	.288	.278	.652				

Halftime: PSU 23, MSSU 22; Turnovers: PSU 13, MSSU 12; Steals: MSSU 4 (Helfrich 2), PSU 3 (Buchanan 2); Blocked Shots: MSSU 8 (Helfrich, Pierce, Hala'Api'Api 2), PSU 3 (Troutman 2).

### Game 13 • Jan. 12, 2008 Lions 85, Central Missouri 82

Warrensburg, Mo. -India Wood scored a career-high 22 points to lead the No. 23-ranked Missouri Southern Lions to a 85-82 win over the Central Missouri Jennies Saturday afternoon (Jan. 12) in Warrensburg, Mo.

The win is the Lions' first in the MIAA and makes them 10-3 overall and 1-3 in conference action.

The first conference victory would not come easily as the Lions had to battle to the very end to pick up the win. Trailing 77-76, Wood hit her sixth three-pointer of the game to give Southern the lead for good with 58 seconds left.

After Wood hit a pair of free throws to give the Lions a four-point lead, Kelce Goebel drove in for a layup to bring UCM to within 81-79 with 12 seconds left.

But Ela Zawadka calmly stepped up to the line and nailed four big free throws to seal the win for the Lions (10-3, 1-3 MIAA).

The Lions fell behind early by six at 14-8, but ripped off a 13-1 run led by nine points from Tynesha Pierce to take a 21-15 lead with 12:23 remaining in the opening half.

Southern went on to lead by 10 at the half, 48-38 behind a combined 24 first-half points from Pierce and Fatai Hala'Api'Api. Wood also hit four treys to help the Lions gain the double-digit halftime lead.

The Jennies (5-8, 0-4 MIAA) took their first lead of the second half at 57-56 on a three by Deidra Dace that capped a 12-2 UCM run with 12:49 left.

With UCM playing mostly zone in the second half, Danielle DeVader stepped up for the Lions and hit four threes, three of which gave the Lions the lead.

#### #23 Missouri Southern (10-3, 1-3 MIAA)

	FG	3-PT	FT	R	PF	A	TP
Helfrich *	0-0	0-0	2-2	0	3	2	2
Pierce *	5-10	1-2	2-2	6	3	1	13
Wood *	7-9	6-7	2-3	4	3	6	22
DeVader *	5-5	5-5	0-0	3	3	2	15
Davis *	2-3	0-0	4-4	0	4	1	8
Henderson	0-0	0-0	0-0	1	0	0	0
Marquez	2-5	0-3	0-1	5	2	1	4
Hala'Api'Api	5-7	0-0	2-3	6	3	1	12
Zawadka	2-8	1-4	4-4	3	2	2	9
Vavao-Huggins	0-0	0-0	0-0	0	0	0	0
TOTALS	28-47	13-21	16-19	32	23	16	85
	.596	.619	.842				

#### Central Missouri (5-8, 0-4 MIAA)

	FG	3-PT	FT	R	PF	A	TP
Jones *	4-9	0-0	7-10	10	4	1	15
Cook *	1-4	1-4	1-2	4	2	3	4
Maple *	7-15	5-8	6-8	0	1	3	25
Dace *	4-11	3-5	4-4	0	4	1	15
Blakemore *	2-6	0-2	0-1	1	2	1	4
Goebel	6-8	3-5	2-2	2	3	4	17
Roberts	0-0	0-0	2-2	0	1	0	2
TOTALS	24-53	12-24	22-29	21	17	13	82
	.453	.500	.759				

Halftime: MSSU 48, UCM 38; Turnovers: MSSU 22, UCM 12; Steals: UCM 11 (Goebel 4), MSSU 7 (Wood 4); Blocked Shots: MSSU 5 (Hala'Api'Api 2), UCM 0.

### Game 14 • Jan. 16, 2008 Lions 65, Northwest Missouri 64

Maryville, Mo. -Ivaney Marquez made two key plays on the offensive and defensive ends in the final moments to lead the Missouri Southern Lions to a 65-64 win over the Northwest Missouri State Bearcats Wednesday night (Jan. 16) in Maryville, Mo.

Trailing 64-63, Marquez missed a pair of shots but coralled the offensive board each time and hit a layup to put the Lions ahead with just four seconds remaining.

Marquez then closed the deal on the other end with a block of a last-second jumper by Jessica Burton as the Lions (11-3, 2-3 MIAA) hung on for the victory.

The see-saw game featured seven lead changes, with six coming in the second half. The Bearcats final lead came after a free throw by Kelli Nelson put Northwest (9-5, 4-1 MIAA) up 64-63 with 48 seconds remaining.

The Lions biggest lead of the evening came when Tynesha Pierce capped off a 9-0 Southern spurt with a jumper that made it 60-56 in favor of the Lions with 6:56 left in the second half.

Northwest then scored five straight to lead by one, but a three-pointer by India Wood put the Lions back on top 63-61 with 4:12 left.

Things could not have started much worse for the Lions as the Bearcats began the game on a 15-0 run that included seven points from Mandi Schumacher during that stretch.

Southern battled back and got the lead under double-digits for the first time on a jumper by Pierce that brought the Lions to within 22-14 with 11:13 remaining in the opening half.

As bad as the Lions began the first half, they ended the first stanza in just as great of fashion. After a bucket by Schumacher gave the Bearcats a 32-24 advantage, the Lions closed the half on an 11-1 run that included scoring the final nine points of the opening half.

Lindsey Davis scored five in that span and Ela Zawadka made a layup with 10 seconds left to give the Lions a 35-33 lead going into halftime.

#### Missouri Southern (11-3, 2-3 MIAA)

	FG	3-PT	FT	R	PF	A	TP
Zawadka *	4-11	2-6	0-0	7	1	0	10
Pierce *	6-13	0-1	0-1	9	3	0	12
Wood *	5-11	3-3	0-1	1	2	4	13
DeVader *	0-0	0-0	0-0	0	1	0	0
Davis *	4-10	0-0	3-4	5	1	5	11
Henderson	0-0	0-0	0-0	0	0	0	0
Marquez	4-11	1-3	0-0	10	0	2	9
Hala'Api'Api	5-10	0-0	0-0	8	5	1	10
TOTALS	28-66	6-13	3-6	41	13	12	65
	.424	.462	.500				

#### NW Missouri State (9-5, 4-1 MIAA)

	FG	3-PT	FT	R	PF	A	TP
Brue *	3-11	3-5	0-0	5	1	5	9
Schumacher *	9-11	0-0	3-7	9	2	0	21
Vandevender *	2-7	2-6	0-0	2	1	0	6
Nelson *	3-7	2-6	1-2	5	0	1	9
Miller *	0-1	0-0	0-0	3	1	6	0
Uriell	0-0	0-0	0-0	0	0	0	0
Burton	3-6	0-2	0-0	4	3	2	6
Bayer	0-1	0-1	0-0	0	1	0	0
Williams	1-6	0-2	2-2	0	3	1	4
Dill	2-8	1-2	4-4	3	1	0	9
TOTALS	23-58	8-24	10-15	36	13	15	64
	.397	.333	.667				

Halftime: MSSU 35, NWMSU 33; Turnovers: MSSU 19, NWMSU 19; Steals: NWMSU 11 (Vandevender, Nelson, Miller 2), MSSU 10 (Pierce 4); Blocked Shots: MSSU 5 (Zawadka 2), NWMSU 5 (Burton, Dill 2).

### Game 15 • Jan. 19, 2008 Lions 58, Southwest Baptist 55

Joplin, Mo. -- Fatai Hala'Api'Api recorded a double-double of 16 points and 12 rebounds to lead the Missouri Southern Lions to a thrilling 58-55 win over the Southwest Baptist Lady Bearcats Saturday night (Jan. 19) at the Leggett & Platt Athletic Center.

Trailing 55-54, Ela Zawadka got open underneath and drew a foul and then stepped up and hit two big free throws to give the Lions a one-point advantage with 1:17 remaining.

The Lions then forced a miss on the other end and Fatai rebounded a Lion miss and put in a hook shot that put Southern up 58-55 with just 35 seconds left.

SBU had ample opportunities to draw even, but missed four consecutive three-pointers in the final seconds.

Leading 36-24 at the half, Lindsey Davis drained a trey to give the Lions a 39-24 advantage 19 seconds into the second before the Lady Bearcats made their way back into the contest.

Kelly Reinkemeyer and Erica Souza combined for all 12 points of a 12-3 SBU run that pulled the Lady Bearcats to within 41-38 with 14:58 remaining.

SBU then climbed to within one at 46-45 on a three-pointer from Courtney Creed with 11:16 left.

Southern stayed ahead at that point and jumped back up by eight after a layup by Fatai capped an 8-2 spurt to put the Lions ahead 54-46.

But the Lady Bearcats refused to go away and grabbed the lead for the first time in the second half by out-scoring the Lions 9-0 over the next 5:35 to lead 55-54 on a jumper by Creed with 2:12 left.

#### Missouri Southern (12-3, 3-3 MIAA)

	FG	3-PT	FT	R	PF	A	TP
Wood *	2-6	0-3	1-1	5	3	1	5
Zawadka *	0-6	0-3	2-2	2	0	0	2
DeVader *	0-6	0-5	0-1	4	1	2	0
Davis *	6-8	1-1	2-2	1	2	3	15
Pierce *	6-7	0-0	1-2	6	3	0	13
Henderson	0-0	0-0	0-0	0	0	0	0
Bonner	1-3	0-0	0-0	3	0	0	2
Marquez	2-8	1-4	0-0	5	2	4	5
Hala'Api'Api	8-10	0-0	0-0	12	4	0	16
TOTALS	25-54	2-16	6-8	41	15	10	58
	.463	.125	.750				

#### Southwest Baptist (12-3, 4-2 MIAA)

	FG	3-PT	FT	R	PF	A	TP
Shewmaker *	6-12	3-7	0-1	5	4	2	15
Souza *	3-11	2-6	0-2	2	3	2	8
Creed *	5-13	1-4	0-0	2	3	2	11
Graves *	0-7	0-7	0-0	7	1	2	0
Reinkemeyer *	5-7	0-0	7-9	3	0	2	17
Heady	0-1	0-1	0-0	1	0	2	0
Gatschenberger	0-2	0-2	0-0	2	1	0	0
Cutbirth	2-4	0-0	0-0	0	0	0	4
TOTALS	21-57	6-27	7-12	27	12	12	55
	.368	.222	.583				

Halftime: MSSU 36, SBU 24; Turnovers: MSSU 18, SBU 10; Steals: SBU 8 (Souza 3), MSSU 5 (Hala'Api'Api 2); Blocked Shots: MSSU 2 (DeVader, Hala'Api'Api), SBU 0.

**Game 16 • Jan. 23, 2008**  
**Lions 90, No. 16 Emporia State 71**

Joplin, Mo. -- The Missouri Southern Lions converted 34-of-38 free throws that led to a convincing, 90-71 victory over the No. 16-ranked Emporia State Lady Hornets Wednesday night (Jan. 23) at the Leggett & Platt Athletic Center.

India Wood continued her stellar play in the MIAA with a career-high 24 points on 8-of-11 from the field. She also made all six of her free-throw attempts and both of her tries from three-point distance. Wood has been the Lions leading scorer in three of their four conference victories this season.

The Lions (13-3, 4-3 MIAA) were led at the stripe by Danielle DeVader, who was a perfect 10-of-10 at the line to account for all of her points.

The closest ESU came in the second half was three as Michelle Stueve converted a three-point play that made it 48-45 Lions with 15:05 remaining.

Wood and Tynesha Pierce then combined for nine points to lead an 11-2 run that gave the Lions a double-digit lead at 59-47.

The Lions maintained at least an eight-point advantage from that point and made 12 free throws over the final 2:09 to pull away for the big win.

After Stueve hit a three to put the Lady Hornets up 5-2 in the early minutes, the Lions went on a 19-2 burst and led 21-7 after Wood made a layup with 13:49 left in the opening half.

The Lions built the lead to 17 at 27-10 before Stueve hit a trey to cap an 11-2 Lady Hornet spurt with 8:34 left in the opening stanza that brought ESU to within eight.

MSSU went on to lead 43-35 at the half.

Missouri Southern (13-3, 4-3 MIAA)

	FG	3-PT	FT	R	PF	A	TP
Wood *	8-11	2-2	6-6	4	4	3	24
Zawadka *	4-9	2-5	2-2	5	3	1	12
DeVader *	0-2	0-0	10-10	5	2	2	10
Davis *	1-2	0-0	0-2	2	2	0	2
Pierce *	7-15	0-0	8-9	8	2	0	22
Henderson	0-0	0-0	0-0	0	1	0	0
Bonner	0-3	0-2	0-0	2	4	0	0
Marquez	0-2	0-1	0-0	2	0	0	0
Hala'Api'Api	4-8	0-0	5-6	6	3	1	13
Helfrich	2-4	0-0	3-3	4	0	0	7
TOTALS	26-56	4-10	34-38	46	21	7	90
	.464	.400	.895				

#16 Emporia State (11-5, 4-3 MIAA)

	FG	3-PT	FT	R	PF	A	TP
Boston *	5-10	1-5	4-5	0	3	2	15
Leiker *	5-10	2-5	2-2	1	3	3	14
Kisner *	3-7	0-2	0-0	4	4	1	6
Stueve *	6-20	4-9	5-5	8	3	3	21
Renberg *	0-0	0-0	0-0	0	2	1	0
Augustyn	1-2	1-2	0-0	0	1	1	3
Corker	0-1	0-1	0-0	0	1	1	0
Zabel	0-0	0-0	0-0	0	1	0	0
Edwards	4-7	1-1	0-0	5	4	1	9
Volkens	1-3	0-0	1-3	2	4	1	3
TOTALS	25-60	9-25	12-15	24	26	14	71
	.417	.360	.800				

Halftime: MSSU 43, ESU 35; Turnovers: MSSU 18, ESU 17; Steals: MSSU 7 (Pierce 3), ESU 3 (Boston, Stueve, Volkens); Blocked Shots: MSSU 6 (Pierce 3), ESU 3 (Stueve 2).