



# MISSOURI SOUTHERN STATE UNIVERSITY

## WOMEN'S BASKETBALL REPORT

Jan. 5, 2008

FOR IMMEDIATE RELEASE

### No. 16-ranked Lions host Missouri Western in their MIAA home opener

#### 2007-08 LIONS SCHEDULE

DATE	OPPONENT	TIME
Nov. 4	@ Arkansas (EX)	L, 47-52
<b>NOV. 10</b>	<b>LIVIN' THE DREAM (EX)</b>	<b>W, 74-49</b>
Nov. 16	@ St. Edwards	W, 60-39
Nov. 17	vs. Incarnate Word	W, 52-43
Nov. 23	vs. St. Mary's	W, 66-29
Nov. 24	vs. Quincy	W, 83-51
<b>NOV. 28</b>	<b>WEBSTER UNIVERSITY</b>	<b>W, 86-36</b>
<b>DEC. 1</b>	<b>ST. EDWARDS</b>	<b>W, 60-42</b>
Dec. 7	@ OK Panhandle State	W, 59-44
Dec. 17	@ Northeastern State	W, 70-62
<b>DEC. 19</b>	<b>EVANGEL</b>	<b>W, 79-62</b>
Jan. 2	@ Truman State *	L, 55-68
<b>JAN. 5</b>	<b>MISSOURI WESTERN *</b>	<b>.. 5:30 PM</b>
<b>JAN. 9</b>	<b>PITTSBURG STATE *</b>	<b>..... 5:30 PM</b>
Jan. 12	@ Central Missouri *	1:30 pm
Jan. 16	@ Northwest Missouri *	5:30 pm
<b>JAN. 19</b>	<b>SOUTHWEST BAPTIST *</b>	<b>.. 5:30 PM</b>
<b>JAN. 23</b>	<b>EMPORIA STATE *</b>	<b>..... 5:30 PM</b>
Jan. 26	@ Fort Hays State *	3 pm
Jan 30	@ Washburn *	5:30 pm
<b>FEB. 2</b>	<b>TRUMAN STATE *</b>	<b>..... 1 PM</b>
<b>FEB. 6</b>	<b>WASHBURN *</b>	<b>..... 5:30 PM</b>
<b>FEB. 9</b>	<b>FORT HAYS STATE *</b>	<b>..... 5:30 PM</b>
Feb. 13	@ Emporia State *	5:30 pm
Feb. 16	@ Southwest Baptist *	5:30 pm
<b>FEB. 20</b>	<b>CENTRAL MISSOURI *</b>	<b>... 5:30 PM</b>
<b>FEB. 23</b>	<b>NORTHWEST MISSOURI *</b>	<b>.. 1 PM</b>
Feb. 27	@ Pittsburg State *	5:30 pm
Mar. 1	@ Missouri Western *	5:30 pm
Mar. 6-9	@ MIAA Tournament	TBA (Kansas City, Mo.)

**Bold** Indicates Home Game  
\* Indicates MIAA Game

#### No. 16 Missouri Southern (9-1, 0-1 MIAA) vs. Missouri Western (5-4, 0-1 MIAA)

Sat. Jan. 5, 2008 • Joplin, Mo.

**Tipoff:** 5:30 p.m.

**Arena:** Leggett & Platt Athletic Center (3,200)

**Last Meeting:** MSSU defeated No. 2 Missouri Western, 75-69, Feb. 24, 2006 in Joplin, Mo.

**Radio:** KHST 101.7 FM The Rocket; Kevin Greim (play-by-play)

**TV:** www.themiaa.tv

**Internet Audio:** www.mssu.edu/athletics

**Live Internet Stats:** <http://www.mssu.edu/athletics/mensbasketball/live/xlive.htm>

#### PROBABLE STARTERS

#16 LIONS (9-1, 0-1 MIAA)	Pos.	Yr.	Ht.	PPG	RPG	APG
2 Randi Henderson (Urbana, Mo.)	G	So.	5-4	1.5	1.1	1.8
11 Ivaney Marquez (Valencia, Venezuela)	G	Jr.	5-11	4.8	3.5	1.8
21 Ela Zawadka (Torun, Poland)	G	Sr.	5-11	5.7	3.8	0.8
22 Danielle DeVader (Holton, Kan.)	G	Jr.	5-9	2.9	2.0	1.9
42 Tynesha Pierce (Houston, Texas)	F	Sr.	6-0	10.2	6.2	0.8

Missouri Western (5-4, 0-1 MIAA)	Pos.	Yr.	Ht.	PPG	RPG	APG
20 Amanda Thomas (St. Joseph, Mo.)	G	Jr.	5-6	2.0	4.4	1.7
22 Chemia Woods (Menifee, Ark.)	G	Sr.	5-5	7.4	4.6	3.7
31 Jill Johnson (Rockwell City, Iowa)	F	Sr.	5-11	18.2	8.4	2.1
32 Yanique Javois (St. Joseph, Mo.)	G	Sr.	5-9	16.2	2.6	3.1
34 Tierra Ford (Kansas City, Mo.)	F	Fr.	5-9	8.9	6.1	1.9

#### THE COACHES

After six straight winning seasons, Maryann Mitts is quickly closing in on becoming the winningest coach in Missouri Southern history. With 107 career victories, Mitts is now the second all-time winningest coach at MSSU and trails Jim Phillips by just 22 games. Under Mitts' guidance, the Lions have put together 15 or more wins in five of Mitts' six years at the helm and have moved back into the upper echelon of the highly competitive Mid-America Intercollegiate Athletics Association. Last year, Mitts helped the Lions overcome an injury-riddled season to post their sixth straight winning record at 14-13, including a tie for fifth place in the MIAA and a sixth consecutive appearance in the MIAA Postseason Tournament. Overall, Mitts has compiled a 107-72 (.598) record in her seventh season with the Lions. She holds a 190-128 (.597) mark now in her 12th year as a collegiate head coach. Mitts is 4-11 vs. Missouri Western as the Southern mentor.

Lynn Plett is in his first season at the helm of Missouri Western after serving as the head coach at Lewis University for the past five seasons. Last season, Plett led Lewis to a school-best 28-4 record and a No. 12 ranking in the final NCAA Division II Coaches Poll.



CONTACT: LEVI CONVIRS, SPORTS INFORMATION ASSISTANT

EMAIL: [SPORTSINFO@MSSU.EDU](mailto:SPORTSINFO@MSSU.EDU)  
3950 E. NEWMAN RD.  
JOPLIN, MO  
64801-1595

OFFICE: 417/625.9851  
FAX: 417/625.9397  
CELL: 918/533/8707



Visit Missouri Southern Athletics on the web at [www.mssu.edu/athletics](http://www.mssu.edu/athletics)

## 2007-08 MIAA STANDINGS

	MIAA		All Games	
	W-L	Pct.	W-L	Pct.
Truman State	1-0	1.000	9-1	.900
Washburn (4)	1-0	1.000	9-1	.900
Emporia State (T13)	1-0	1.000	8-2	.800
Pittsburg State	1-0	1.000	7-3	.700
Northwest Missouri State	1-0	1.000	6-4	.600
Missouri Southern	0-1	.000	9-1	.900
Southwest Baptist	0-1	.000	8-2	.800
Fort Hays State	0-1	.000	6-4	.600
Missouri Western	0-1	.000	5-4	.556
Central Missouri	0-1	.000	5-5	.500

WBCA/USA Today/ESPN Division II Coaches Poll ranking in parenthesis

### SATURDAY, JANUARY 5

- \*PSU @ TSU, 1:00 PM
- \*ESU @ SBU, 1:30 PM
- \*FHSU @ NWMSU, 5:30 PM
- \*MWSU @ MSSU, 5:30 PM
- \*UCM @ WU, 5:30 PM

### WEDNESDAY, JANUARY 9

- \*NWMSU @ MWSU, 5:30 PM
- \*PSU @ MSSU, 5:30 PM
- \*SBU @ UCM, 5:30 PM
- \*TSU @ FHSU, 5:30 PM
- \*WU @ ESU, 5:30 PM

### SATURDAY, JANUARY 12

- \*MSSU @ UCM, 1:30 PM
- \*FHSU @ SBU, 5:30 PM
- \*MWSU @ TSU, 5:30 PM
- \*PSU @ ESU, 5:30 PM
- \*WU @ NWMSU, 5:30 PM

### WEDNESDAY, JANUARY 16

- \*MSSU @ NWMSU, 5:30 PM
- \*SBU @ PSU, 5:30 PM
- \*TSU @ ESU, 5:30 PM
- \*UCM @ MWSU, 5:30 PM
- \*WU @ FHSU, 5:30 PM

### RECENT RESULTS

FRIDAY, DECEMBER 28  
+LIVIN' THE DREAM 59 @ UCM 104 FINAL

SATURDAY, DECEMBER 29  
CENTRAL METHODIST (MO.) 56 @ MWSU 99 FINAL  
SAINT MARY (KAN.) 57 @ FHSU 78 FINAL

WEDNESDAY, JANUARY 2  
\*ESU 68 @ FHSU 62 FINAL  
\*MSSU 55 @ TSU 68 FINAL  
\*SBU 97 @ NWMSU 101 FINAL  
\*UCM 58 @ PSU 60 FINAL  
\*WU 65 @ MWSU 52 FINAL

## ALL-TIME SERIES VS. MISSOURI WESTERN

11/15/77	MWSU	62-83	2/24/90	MWSU	75-88	1/28/06	Lions	69-61
2/12/77	MWSU	54-73	2/23/91	Southern	63-55	2/2/06	MWSU (n)	59-79
2/26/77	MWSU	39-65	2/22/92	Southern	87-65	12/30/06	MWSU	66-81
1/21/78	Southern	76-60	2/20/93	Southern	82-70	2/24/07	Lions	75-69
2/18/78	MWSU	66-72	1/12/94	MWSU	74-79	*OT (n)-neutral site game		
3/4/78	MWSU	60-64	2/16/94	MWSU	80-81*	Home games in bold		
1/12/79	Southern	73-61	3/12/94	MWSU	73-75	INSIDE THE SERIES		
2/9/79	Southern	81-71	1/11/95	MWSU	79-95	Lions trail 21-47		
2/2/80	MWSU	70-71	2/15/95	MWSU	73-83	Lions at home: 17-16		
2/16/80	Southern	81-57	1/10/96	MWSU	63-66	Lions on the road: 4-29		
2/21/80	MWSU	51-57	2/14/96	Southern	83-67	Lions at neutral site: 0-2		
1/23/81	MWSU	67-73	2/28/96	Southern	82-62	Most points, MSSU: 87 (87-65),		
2/6/81	MWSU	59-76	1/13/97	MWSU	63-73	2/22/92 at Joplin		
1/15/82	Southern	74-64	2/12/97	MWSU	55-76	Most points, MWSU: 95 (95-79),		
2/6/82	Southern	65-63	2/26/97	MWSU	51-59	1/11/95 at Joplin		
2/24/82	Southern	55-48	2/11/98	MWSU	65-81	Largest victory margin, MSSU: +26		
1/22/83	MWSU	73-82	2/11/99	MWSU	62-78	(79-53), 1/22/88 at Joplin		
2/4/83	MWSU	58-67	1/26/00	MWSU	56-75	Largest victory margin, MWSU: +41		
1/13/84	Southern	63-53	2/23/00	MWSU	58-66	(80-39), 2/1/01 at St. Joseph		
2/11/84	MWSU	57-63	1/24/01	MWSU	57-73	Last road win, MSSU: 82-70, 2/20/93		
3/2/84	MWSU	71-76	2/1/01	MWSU	39-80	Last road win, MWSU: 76-59,		
2/2/85	MWSU	60-66	1/23/02	MWSU	61-76	2/28/04		
2/22/85	MWSU	71-78	2/20/02	MWSU	60-40	Most consecutive wins, MSSU: 3,		
2/28/85	Southern	67-49	2/27/02	MWSU	80-45	Jan. 15, 1982-Feb. 24, 1982 and		
1/25/86	MWSU	67-69	1/22/03	Southern	79-55	Feb. 23, 1991-Feb. 20, 1993		
2/7/86	Southern	57-45	2/19/03	MWSU	55-69	Most consecutive wins, MWSU: 12,		
1/16/87	MWSU	55-68	1/3/04	MWSU	57-65	Jan. 13, 1997-Feb. 27, 2002		
2/14/87	MWSU	82-87*	2/28/04	MWSU	59-76			
1/22/88	Southern	79-53	3/4/04	MWSU (n)	67-70*			
2/6/88	MWSU	46-56	1/3/05	MWSU	48-70			
2/4/89	Southern	85-71	2/26/05	Lions	86-77			
2/24/89	MWSU	82-93	12/30/05	MWSU	60-63			

## USA TODAY/ESPN TOP 25 DATE: 1/1/08

Rank	School	Pvs.	Record
1.	University of North Dakota	- 23	1 13-0
2.	Delta State University (Miss.)	- 3	2 9-0
3.	Drury University (Mo.)		6 9-1
4.	Washburn University (Kan.)		7 8-1
5.	Concordia, St. Paul (Minn.)		8 12-0
6.	Valdosta State University (Ga.)		9 12-1
7.	University Of Alaska Anchorage		4 11-1
8.	Seattle Pacific University (Wash.)	15	9-0
9.	Indiana University (PA)	5	10-1
10.	Southern CT State University	10	9-2
11.	Holy Family University (Pa.)	13	10-0
12.	University Of California-San Diego	3	10-2
13.	Emporia State (Kan.)	14	7-2
13.	University Of South Dakota	19	13-1
15.	Northern Kentucky University	11	8-2
16.	<b>Missouri Southern</b>	<b>23</b>	<b>9-0</b>
17.	Texas A&M University-Commerce	18	8-2
18.	Stonehill College (Mass.)	16	10-2
19.	Minnesota State, Mankato	21	12-1
20.	USC- Aiken	22	7-1
21.	Clayton State University (Ga.)	17	7-3
22.	California State University, Chico	12	8-3
23.	Franklin Pierce University	25	11-1
24.	West Texas A&M University	20	6-3
25.	Augustana College (S.D.)	NR	13-3

## MIAA PRESEASON POLL

	Pts
1. Emporia State (6)	78
2. Washburn (4)	76
3. Northwest Missouri State	58
4. Central Missouri	51
5. Missouri Southern	50
6. Missouri Western	42
7. Pittsburg State	34
8. Fort Hays State	22
Southwest Baptist	22
10. Truman	17

**Last Time vs. Missouri Western  
(Game 26) Feb. 24, 2007  
Lions 75, #2 Missouri Western 69**

Joplin, Mo. - Senior Dana-Mae Robbs made Senior night memorable by scoring 18 points to lead the Missouri Southern Lions to a remarkable 75-69 win over the No. 2-ranked and MIAA Regular Season Champions Missouri Western Griffons Saturday night (Feb. 24) at the Leggett & Platt Athletic Center

Southern built the lead as big as 18 in the second half when Danielle DeVader (Holton, Kan.) nailed a three-pointer to put the Lions ahead 50-32 with 16:08 left in the game.

Yanique Javois and Ashleigh Curry hit a pair of three-pointers to key a 24-13 Griffons run that cut the Lions lead to 63-56 with 3:35 left.

The Lions responded with a jumper from Tynesha Pierce (Houston, Texas) and a pair of free throws from DeVader to push the lead back to 67-56.

MSSU had to withstand one final push from the second-ranked Griffons when Tiffany Davis hit two free throws that brought Western to within 71-66 with 30 seconds left.

But DeVader stepped up and made four crucial free throws in the final 30 seconds to seal the huge victory for the Lions.

The Lions led nearly throughout against the Griffons, as Western's last lead occurred at the 12:12 mark of the first half when Jill Johnson hit a free throw to put the Griffons up 14-13.

From there, DeVader hit a three and Robbs made a layup to key a 6-0 Southern run that put the Lions ahead for good, 20-14 with 9:49 left in the opening half.

**Missouri Southern (14-12, 7-11 MIAA)**

	FG	3-PT	FT	R	PF	A	TP
Kantin *	2-6	0-3	7-8	5	0	2	11
DeVader *	3-4	3-4	6-6	4	2	3	15
Kuczynski *	0-3	0-2	2-2	5	1	5	2
Robbs *	6-14	1-1	5-6	3	2	0	18
Pierce *	1-8	0-0	6-8	6	3	2	8
Henderson	0-0	0-0	0-0	0	0	0	0
Wood	1-3	1-2	4-4	1	0	3	7
Hala'Api'Api	7-8	0-0	0-0	1	3	0	14
Zawadka	0-2	0-2	0-0	1	2	1	0
<b>TOTALS</b>	<b>20-48</b>	<b>5-14</b>	<b>30-34</b>	<b>35</b>	<b>13</b>	<b>16</b>	<b>75</b>
	.417	.357	.882				

**#2 Missouri Western (27-2, 16-2 MIAA)**

	FG	3-PT	FT	R	PF	A	TP
Buzoka *	6-12	0-1	3-6	9	3	0	15
Davis *	0-5	0-1	2-2	4	4	8	2
Johnson *	2-4	0-1	5-6	10	4	0	9
Javois *	7-15	4-8	0-0	3	4	0	18
Peterson *	0-5	0-3	2-2	2	3	1	2
Thomas	0-1	0-0	0-0	0	2	0	0
Woods	1-3	1-2	2-2	1	0	2	5
Curry	6-16	6-11	0-0	2	3	2	18
deAlmeida	0-0	0-0	0-0	0	0	0	0
<b>TOTALS</b>	<b>22-61</b>	<b>11-27</b>	<b>14-18</b>	<b>36</b>	<b>23</b>	<b>13</b>	<b>69</b>
	.361	.407	.778				

Halftime: MSSU 39, MWSU 30; Turnovers: MWSU 13, MSSU 12; Steals: MSSU 7 (Robbs 3), MWSU 2 (Davis, Javois); Blocked Shots: MSSU 3 (Hala'Api'Api 2), MWSU 0.

**TALE OF THE TAPE**

MSSU	CATEGORY	MWSU
9th, 67.0	Scoring Offense	7th, 68.6
1st, 47.6	Scoring Defense	6th, 65.1
2nd, +19.4	Scoring Margin	9th, +3.4
5th, .435	Field Goal Percentage	4th, .442
5th, .332	Three-Point FG Percentage	4th, .335
7th, 6.10	Three-Point FG Made/Game	9th, 5.78
10th, .645	Free Throw Percentage	6th, .717
1st, .287	Field Goal Pct. Defense	4th, .363
1st, .210	Three-Point FG Pct. Defense	9th, .343
6th, 39.9	Rebounding Offense	8th, 39.2
3rd, 34.2	Rebounding Defense	6th, 37.0
3rd, +5.7	Rebounding Margin	7th, +2.2
4th, 16.30	Assists per Game	5th, 16.11
8th, 8.30	Steals per Game	6th, 9.11
3rd, 4.00	Blocked Shots per Game	1st, 4.33
3rd, +3.60	Turnover Margin	9th, -1.67
4th, 1.01	Assist-Turnover Ratio	8th, 0.82
4th, 14.80	Offensive Rebounds	8th, 12.00
7th, 25.10	Defensive Rebounds	4th, 27.22

MIAA rankings through games of Jan. 2

**2007-08 STARTING FIVES**

Pierce, Hala'api'api, Wood, Kantin, DeVader	3-0
Marquez, Hala'api'api, Wood, Kantin, Zawadka	2-0
Marquez, Pierce, Wood, Kantin, Zawadka	2-0
Wood, Kantin, DeVader, Helfrich, Pierce	1-0
Wood, Marquez, DeVader, Helfrich, Pierce	1-0
Henderson, Marquez, Zawadka, DeVader, Pierce	0-1

**THE LIONS RECORD WHEN ...**

	2007-08	Under Mitts
Scoring 59 points or less	2-1	12-43
Scoring 60-69 points	3-0	39-24
Scoring 70-79 points	2-0	29-4
Scoring 80+ points	2-0	27-1
Allowing 59 points or less	7-0	62-7
Allowing 60-69 points	2-1	34-26
Allowing 70-79 points	0-0	9-28
Allowing 80+ points	0-0	2-11
Game decided by 3 pts. or less	0-0	17-9
Game decided by 4-9 pts.	2-0	29-24
Game decided by 10-19 pts.	3-1	29-24
Game decided by 20 or more	4-0	32-16
Lead in rebounding	6-0	78-27
Trail in rebounding	3-0	27-37
Tie in rebounding	0-1	2-8
Have more turnovers	4-0	38-52
Have fewer turnovers	5-1	58-19
Tie in turnovers	0-0	11-1
Lead at halftime	7-0	81-14
Trail at halftime	1-1	21-52
Tied at halftime	1-0	5-6
Outshoot opponents (pct.)	9-0	86-14
Opponent outshoots (pct.)	0-1	20-57
Tie in shooting (pct.)	0-0	1-1
Make more free throws	1-0	61-15
Make less free throws	8-1	45-53
Tie in free throws	0-0	2-5
Make more threes	8-0	74-25
Make less threes	1-0	29-38
Tie in threes	0-1	5-9
Have more assists	9-0	78-14
Have fewer assists	0-0	25-54
Tie in assists	0-1	3-5
Have more steals	6-1	76-25
Have fewer steals	2-0	23-39
Tie in steals	1-0	8-9
Get more bench points	8-1	58-31
Get fewer bench points	1-0	44-39
Tie in bench points	0-0	5-2
Game goes into overtime	0-0	4-2
In November	5-0	29-5
In December	4-0	26-8
In January	0-1	25-29
In February	0-0	23-23
In March	0-0	0-6
vs. Nationally-Ranked Foes	0-0	7-24

## THE 2007-08 LIONS AT-A-GLANCE

No.	Name	Pos.	Ht.	Yr.	Hometown/Previous School
2	Randi Henderson	G	5-4	So.	Urbana, Mo./Skyline HS
5	India Wood	G	5-7	Jr.	Decatur, Ala./Eastern Kentucky University
10	Trice Bonner	G/F	5-11	So.	Mobile, Ala./Okaloosa Walton CC
11	Ivaney Marquez	G	5-11	Jr.	Valencia, Venezuela/Grayson CC
13	Misti Johnson	G	5-6	Jr.	Gainsville, Mo./Mo Valley
15	Fatai Hala'Api'Api	C	6-1	Sr.	Maui, Hi./Eastern Kentucky University
20	Robin Kantin	G	5-8	Sr.	Silver Spring, Md./Radford (Va.) University
21	Ela Zawadka	G	5-11	Sr.	Torun, Poland/Frank Phillips
22	Danielle DeVader	G	5-9	Jr.	Holton, Kan./Holton HS
23	Lindsey Davis	G	5-8	Jr.	Wellington, Kan./Cowley CC
33	Nichole Helfrich	F	6-0	Jr.	Beech Grove, Ind./Missouri-St. Louis
42	Tynesha Pierce	F/C	6-0	Sr.	Houston, Texas/UT-Pan American
53	Brittany Vavao-Huggins	F	5-11	Fr.	Fayetteville, Ark./Fayetteville HS

Head Coach: Maryann Mitts

Assistant Coaches: Ronda Hubbard, Chris Kendrick, Tyrone Jones

### THE DISH ON SOUTHERN (9-1)

The No. 16-ranked Missouri Southern Lions suffered their first loss of the season Wednesday night (Jan. 2), 68-55 to the Truman Bulldogs in Kirksville, Mo. Nichole Helfrich led the Lions with 12 points and Ela Zawadka grabbed a team-high 11 boards for Southern. Georgia Mueller paced Truman with a game-high 27 points and 12 rebounds.

Senior Fatai Hala'api'api leads the Lions this season with 11.2 ppg, while fellow senior Robin Kantin scores 10.5 ppg. Senior Tynesha Pierce scores 10.2 ppg and averages a team-best 6.2 rebounds. India Wood leads the team with 40 assists.

### THE DISH ON THE GRIFFONS (5-4)

The Missouri Western Griffons have a record of 5-4 after dropping their MIAA opener to No. 4-ranked Washburn, 65-52 Wednesday night (Jan. 2) in St. Joseph, Mo.

The Griffons are led in scoring and rebounding by senior Jill Johnson, with 18.2 points a game and 8.4 rebounds. Yanique Javois is the other Griffon in double-figures with 16.2 ppg and Chemia Woods leads Western with 33 assists.

### THE SERIES

Missouri Southern trails Western in the overall series 47-21. The Lions are 17-16 at home against the Griffons and are 4-29 in St. Joseph. The Griffons won the only two meetings played on a neutral court.

### HALFWAY WILL GET YOU THERE

Even though the game does not officially end at halftime, Missouri Southern has shown that if it can get the lead at the break, they know how to protect it and finish on top. The Lions are a sparkling 81-14 under Maryann Mitts when they have the edge at the half, including a perfect 7-0 this season.

### LIONS NATIONALLY RANKED

In the latest NCAA Division II National Rankings, the 9-1 Missouri Southern Lions climbed seven spots to No. 16. The ranking is the Lions' highest ranking in school history.

The Lions have regional victories over St. Edward's (2), Incarnate Word, Quincy, Panhandle State and Northeastern State.

### BLOCK PARTY

Senior Fatai Hala'api'api currently leads the Lions and ranks second in the MIAA with 20 blocked shots through just 10 games. Fatai is nearly halfway to breaking the MSSU single-season record for blocks, which is 42 set by Brianna Volmer during the 2005-06 season. She has half of the Lion's 40 blocks this year, with a single-game high of 5 swats in a win over St. Mary's (Kan.) back on Nov. 23.

### STATISTICAL PACE-SETTERS

The Missouri Southern Lions are quickly becoming a force to be reckoned with, particularly on defense. The Lions currently lead the MIAA in scoring defense (47.6 ppg), field-goal percentage defense (.287) and three-point field-goal percentage defense (.210). The Lions are second in scoring margin (+19.4 ppg).

Individually, Tynesha Pierce ranks second in the league in offensive rebounds (3.60 rpg), while India Wood is fourth in assists (4.00 apg) and assist/turnover ratio (+ 2.11). Fatai Hala'api'api is second in blocked shots (2.00 bpg).

Also through games of Dec. 16, the Lions currently lead all of NCAA Division II in field-goal percentage defense and rank second in scoring defense. They rank seventh in the nation in scoring margin and 17th in blocked shots, with Fatai Hala'api'api tied for 18th in individual blocks.

### MITTS CHASING HISTORY

By defeating the Webster Gorlocks 86-36 on Nov. 28, MSSU head coach Maryann Mitts passed Scott Ballard for second-place on the MSSU all-time wins list. She currently needs just 22 more wins to tie Jim Phillips for most victories all-time at Southern.

Mitts is in her seventh season at MSSU and is 107-72 (.598) overall.

### UP NEXT

The Lions will host Pittsburg State in the season's first edition of the Del Rio Bordertown Battle on Wednesday night (Jan. 9) at 5:30 p.m. The Lions swept the season series last year and have won four straight overall vs. PSU

Missouri Southern Basketball  
 #16 Missouri Southern Season Box Score (as of Jan 02, 2008)  
 All games

RECORD:	OVERALL	HOME	AWAY	NEUTRAL
ALL GAMES.....	(9-1)	(3-0)	(3-1)	(3-0)
CONFERENCE.....	(0-1)	(0-0)	(0-1)	(0-0)
NON-CONFERENCE.....	(9-0)	(3-0)	(3-0)	(3-0)

##	Player	GP-GS	Min--Avg	---TOTAL---		---3-PTS---		FT-FTA	Pct	---REBOUNDS---				PF	FO	A	TO	Blk	Stl	Pts	Avg
				FG-FGA	Pct	3FG-FGA	Pct			Off	Def	Tot	Avg								
15	Hala'Api'Api,Fatai	10-5	186 18.6	47-79	.595	0-0	.000	24-38	.632	21	33	54	5.4	26	2	5	20	20	4	118	11.8
20	Kantin,Robin.....	8-8	205 25.6	28-67	.418	10-28	.357	18-24	.750	12	18	30	3.8	10	0	22	16	1	5	84	10.5
42	Pierce,Tynesha.....	10-8	177 17.7	45-95	.474	4-7	.571	8-14	.571	36	26	62	6.2	37	3	8	14	4	11	102	10.2
10	Bonner,Trice.....	10-0	176 17.6	27-68	.397	14-29	.483	17-21	.810	13	23	36	3.6	26	0	12	23	5	17	85	8.5
05	Wood,India.....	10-9	288 28.8	28-73	.384	7-30	.233	16-28	.571	1	32	33	3.3	10	0	40	19	0	8	79	7.9
21	Zawadka,Ela.....	10-5	224 22.4	23-48	.479	8-25	.320	3-6	.500	9	29	38	3.8	13	0	8	18	0	4	57	5.7
11	Marquez,Ivaney.....	10-6	162 16.2	17-54	.315	8-27	.296	6-11	.545	20	15	35	3.5	13	0	18	13	2	9	48	4.8
33	Helfrich,Nichole...	10-2	184 18.4	12-26	.462	0-0	.000	13-16	.813	19	19	38	3.8	32	0	8	13	5	10	37	3.7
22	DeVader,Danielle...	10-6	189 18.9	9-33	.273	9-32	.281	2-3	.667	5	15	20	2.0	20	0	19	11	0	7	29	2.9
13	Johnson,Misti.....	3-0	23 7.7	4-8	.500	0-2	.000	0-0	.000	0	1	1	0.3	4	0	0	2	0	2	8	2.7
02	Henderson,Randi....	10-1	134 13.4	7-15	.467	1-4	.250	0-2	.000	2	9	11	1.1	12	0	18	8	2	5	15	1.5
53	Vavao-Huggins,Britt	5-0	35 7.0	3-8	.375	0-0	.000	0-2	.000	1	6	7	1.4	5	0	3	1	1	1	6	1.2
23	Davis,Lindsey.....	3-0	17 5.7	0-1	.000	0-0	.000	2-4	.500	0	0	0	0.0	5	0	2	3	0	0	2	0.7
TEAM.....										9	25	34	3.4	0		1					
Total.....		10	2000	250-575	.435	61-184	.332	109-169	.645	148	251	399	39.9	213	5	163	162	40	83	670	67.0
Opponents.....		10	2000	140-488	.287	34-162	.210	162-239	.678	131	211	342	34.2	172	3	77	198	10	44	476	47.6

DATE	TIME	OPPONENT	SCORE	ATTEND	HIGH POINTS	HIGH REBOUNDS
11/16/07	5:30 p.m.	at St. Edward's	W <u>60-39</u>	297	(18)Kantin,Robin	(8)Kantin,Robin
11/17/07	1:00 p.m.	vs Incarnate Word	W <u>52-43</u>	128	(12)Bonner,Trice	(7)Pierce,Tynesha
11/23/07	5:30 pm CST	vs Saint Mary (Kan.)	W <u>66-29</u>	100	(19)Hala'Api'Api,Fatai	(12)Hala'Api'Api,Fatai
11/24/07	5:30 pm CST	vs Quincy	W <u>83-51</u>	110	(19)Hala'Api'Api,Fatai	(12)Hala'Api'Api,Fatai
11/28/07	6 PM	WEBSTER UNIVERSITY	W <u>86-36</u>	1125	(17)Bonner,Trice	(9)Pierce,Tynesha
12/1/07	1 PM	ST. EDWARD'S	W <u>60-42</u>	225	(16)Marquez,Ivaney	(7)Marquez,Ivaney
12/7/07	7 PM	at Okla. Panhandle State	W <u>59-44</u>		(18)Kantin,Robin	(10)Pierce,Tynesha
12/17/07	6:00 pm	at Northeastern State	W <u>70-62</u>	400	(13)Zawadka,Ela	(8)Hala'Api'Api,Fatai
12/19/07	7 PM	EVANGEL	W <u>79-62</u>	406	(27)Hala'Api'Api,Fatai	(10)Pierce,Tynesha
1/2/08	5:30 pm	* at Truman State Univ.	<u>55-68</u> L	285	(12)Helfrich,Nichole	(11)Zawadka,Ela

\* - Conference game

ATTENDANCE SUMMARY	GAMES	TOTALS	AVG/GAME
HOME.....	3	1756	585
AWAY.....	4	982	246
NEUTRAL.....	3	338	113
TOTAL.....	10	3076	308

# THE 2007-08 LIONS



## 2007-08 SEASON HIGHS

Points: 9, vs. Quincy, 11-24-07  
 Rebounds: 5, vs. Incarnate Word, 11-17-07  
 Field Goals: 3, vs. Quincy, 11-24-07  
 3-Point FG: 3, vs. Quincy, 11-24-07  
 Free Throws Made: 2, vs. St. Edward's, 12-1-07  
 Assists: 5, vs. Northeastern State, 12-17-07  
 Steals: 2, three times, last vs. Evangel, 12-19-07

**22-Danielle DeVader**  
 5-9 • Jr. •  
 Guard  
 Holton, Kan.

## CAREER HIGHS

Points: 18, two times, last vs. Ozark Christian, 12-06-05  
 Rebounds: 9, two times, last vs. Washburn, 1-24-07  
 Field Goals: 6, three times, last vs. Panhandle State, 11-29-06  
 3-Point FG: 6, vs. Ozark Christian, 12-06-05  
 Free Throws Made: 6, two times, last vs. Mo. Western, 2-24-07  
 Assists: 5, vs. Northeastern State, 12-17-07  
 Steals: 4, vs. Newman, 11-25-06

SEASON STATS								
GP/S	Pts.-Avg.	FG-A	3FG-A	FT-A	Reb.-Avg.	Ast.	Blk.	Stl.
10/6	29-2.9	9-33	9-32	2-3	20-2.0	19	0	7
		.273	.281	.667				

CAREER STATS								
GP/S	Pts.-Avg.	FG-A	3FG-A	FT-A	Reb.-Avg.	Ast.	Blk.	Stl.
49/30	360-7.3	113-284	88-228	46-51	156-3.2	74	12	40
		.398	.386	.902				



## 2007-08 SEASON HIGHS

Points: 17, vs. Evangel, 12-19-07  
 Rebounds: 10, two times, last vs. Evangel, 12-19-07  
 Field Goals Made: 7, two times, last vs. Evangel, 12-19-07  
 3-Point FG Made: 2, vs. St. Edward's, 12-1-07  
 Free Throws Made: 3, vs. Evangel, 12-19-07  
 Assists: 2, three times, last vs. Evangel, 12-19-07  
 Steals: 3, vs. St. Mary's (Kan.), 11-23-07

**42-TYNESHA PIERCE**  
 6-0, Sr., Forward/  
 Center  
 Houston, Texas

## CAREER HIGHS

Points: 26, vs. Evangel, 11-24-06  
 Rebounds: 13, vs. Pittsburg State, 2-21-07  
 Field Goals Made: 11, vs. Evangel, 11-24-06  
 3-Point FG Made: 2, vs. St. Edward's, 12-1-07  
 Free Throws Made: 6, two times, last vs. Mo. Western, 2-24-07  
 Assists: 2, three times, last vs. Webster, 11-28-07  
 Steals: 4, vs. Harris-Stowe State, 12-5-06

SEASON STATS								
GP/S	Pts.-Avg.	FG-A	3FG-A	FT-A	Reb.-Avg.	Ast.	Blk.	Stl.
10/8	102-10.2	45-95	4-7	8-14	62-6.2	8	4	11
		.474	.571	.571				

CAREER STATS								
GP/S	Pts.-Avg.	FG-A	3FG-A	FT-A	Reb.-Avg.	Ast.	Blk.	Stl.
37/30	439-11.9	181-376	4-7	73-89	228-6.2	23	44	50
		.481	.571	.820				



## 2007-08 SEASON HIGHS

Points: 18, two times, last vs. Panhandle State, 12-7-07  
 Rebounds: 8, two times, last vs. St. Mary's (Kan.), 11-23-07  
 Field Goals: 7, vs. St. Edward's, 11-16-07  
 3-Point FG: 3, vs. Panhandle State, 12-7-07  
 Free Throws Made: 4, two times, last vs. Quincy, 11-24-07  
 Assists: 5, two times, last vs. St. Mary's (Kan.), 11-23-07  
 Steals: 2, vs. St. Edward's, 12-1-07

**20-Robin Kantin**  
 5-8 • Sr. •  
 Guard  
 Silver Spring, Md.

## CAREER HIGHS

Points: 20, two times, last vs. Central Methodist, 11-21-06  
 Rebounds: 12, two times, last vs. Mo. Western, 1-28-06  
 Field Goals: 10, vs. Newman (Kan.), 11-30-05  
 3-Point FG: 5, at Fort Hays State, 2-3-07  
 Free Throws Made: 9, vs. Missouri Western, 1-28-06  
 Assists: 6, at Truman State, 1-7-06  
 Steals: 6, at East Central, 12-20-05

SEASON STATS								
GP/S	Pts.-Avg.	FG-A	3FG-A	FT-A	Reb.-Avg.	Ast.	Blk.	Stl.
8/8	84-10.5	28-67	10-28	18-24	30-3.8	22	1	5
		.418	.357	.750				

CAREER STATS								
GP/S	Pts.-Avg.	FG-A	3FG-A	FT-A	Reb.-Avg.	Ast.	Blk.	Stl.
63/61	695-11.0	227-546	39-122	200-274	331-5.3	165	9	76
		.416	.320	.730				



## 2007-08 SEASON HIGHS

Points: 27, vs. Evangel, 12-19-07  
 Field Goals 9, two times, last vs. Evangel, 12-19-07  
 3-Point FG Made: None  
 Free Throws Made: 9, vs. Evangel, 12-19-07  
 Rebounds: 12, two times, last vs. Quincy, 11-24-07  
 Assists: 1, five times, last at Truman, 1-2-08  
 Steals: 2, vs. St. Edward's, 11-16-07

**15-FATALA HALA'API'API**  
 6-1, Sr., Center  
 Lahaina, Hawaii

## CAREER HIGHS

Points: 27, vs. Evangel, 12-19-07  
 Field Goals 9, two times, last vs. Evangel, 12-19-07  
 3-Point FG Made: None  
 Free Throws Made: 9, vs. Evangel, 12-19-07  
 Rebounds: 14, vs. Central Missouri, 1-6-07  
 Assists: 3, vs. Emporia State, 2-7-07  
 Steals: 2, five times, last vs. St. Edward's, 11-16-07

SEASON STATS								
GP/S	Pts.-Avg.	FG-A	3FG-A	FT-A	Reb.-Avg.	Ast.	Blk.	Stl.
10/5	118-11.8	47-79	0-0	24-38	54-5.4	5	20	4
		.595	.000	.632				

CAREER STATS								
GP/S	Pts.-Avg.	FG-A	3FG-A	FT-A	Reb.-Avg.	Ast.	Blk.	Stl.
30/16	322-10.7	134-243	0-0	54-89	162-5.4	15	50	21
		.551	.000	.607				



**2007-08 SEASON HIGHS**

Points: 5, at Truman, 1-2-08  
 Field Goals 2, two times, last at Truman, 1-2-08  
 3-Point FG Made: 1, at Truman, 1-2-08  
 Free Throws Made: None  
 Rebounds: 4, vs. Quincy, 11-24-07  
 Assists: 4, vs. St. Mary's (Kan.), 11-23-07  
 Steals: 3, vs. St. Edward's, 12-1-07

**2-RANDI HENDERSON**  
 5-4, So., Guard  
 Urbana, Mo

**CAREER HIGHS**

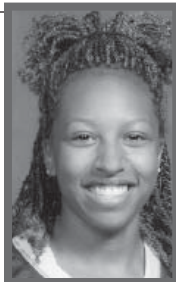
Points: 5, at Truman, 1-2-08  
 Field Goals 2, two times, last at Truman, 1-2-08  
 3-Point FG Made: 1, two times, last at Truman, 1-2-08  
 Free Throws Made: 2, two times, last vs. Southwest Baptist, 2-10-07  
 Rebounds: 4, vs. Quincy, 11-24-07  
 Assists: 4, two times, last vs. St. Mary's (Kan.), 11-23-07  
 Steals: 3, vs. St. Edward's, 12-1-07

**SEASON STATS**

GP/S	Pts.-Avg.	FG-A	3FG-A	FT-A	Reb.-Avg.	Ast.	Blk.	Stl.
10/1	15-1.5	7-15	1-4	0-2	11-1.1	18	2	5
		.467	.250	.000				

**CAREER STATS**

GP/S	Pts.-Avg.	FG-A	3FG-A	FT-A	Reb.-Avg.	Ast.	Blk.	Stl.
32/1	24-0.8	9-28	2-14	4-6	21-0.7	34	5	14
		.321	.143	.667				



**2007-08 SEASON HIGHS**

Points: 15, vs. Panhandle State, 12-7-07  
 Field Goals 6, vs. Panhandle State, 12-7-07  
 3-Point FG Made: 3, vs. Panhandle State, 12-7-07  
 Free Throws Made: 5, two times, last vs. Evangel, 12-19-07  
 Rebounds: 9, vs. Panhandle State, 12-7-07  
 Assists: 9, vs. Evangel, 12-19-07  
 Steals: 2, two times, last vs. Evangel, 12-19-07

**5- INDIA WOOD**  
 5-7, Jr., Guard  
 Decatur, Ala.

**CAREER HIGHS**

Points: 15, vs. Panhandle State, 12-7-07  
 Field Goals 6, vs. Panhandle State, 12-7-07  
 3-Point FG Made: 3, vs. Panhandle State, 12-7-07  
 Free Throws Made: 5, two times, last vs. Evangel, 12-19-07  
 Rebounds: 9, vs. Panhandle State, 12-7-07  
 Assists: 9, vs. Evangel, 12-19-07  
 Steals: 3, at Emporia State, 1-17-07

**SEASON STATS**

GP/S	Pts.-Avg.	FG-A	3FG-A	FT-A	Reb.-Avg.	Ast.	Blk.	Stl.
10/9	79-7.9	28-73	7-30	16-28	33-3.3	40	0	8
		.384	.233	.571				

**CAREER STATS**

GP/S	Pts.-Avg.	FG-A	3FG-A	FT-A	Reb.-Avg.	Ast.	Blk.	Stl.
30/11	156-5.2	54-157	18-69	30-51	72-2.4	92	2	19
		.344	.261	.588				



**2007-08 SEASON HIGHS**

Points: 13, two times, last vs. Northeastern State, 12-17-07  
 Rebounds: 11, at Truman, 1-2-08  
 Field Goals Made: 5, three times, last vs. Evangel, 12-19-07  
 3-Point FG Made: 3, two times, last vs. Northeastern State, 12-17-07  
 Free Throws Made: 1, three times, last vs. Evangel, 12-19-07  
 Assists: 3, two times, last at Truman, 1-2-08  
 Steals: 2, at Truman, 1-2-08

**21-ELA ZAWADKA**  
 5-11, Sr., Guard  
 Torun, Poland

**CAREER HIGHS**

Points: 15, at Central Missouri, 2-14-07  
 Rebounds: 11, at Truman, 1-2-08  
 Field Goals Made: 6, at Central Missouri, 2-14-07  
 3-Point FG Made: 3, three times, last vs. Northeastern State, 12-17-07  
 Free Throws Made: 2, five times, last at Northwest Missouri State, 2-17-07  
 Assists: 3, three times, last at Truman, 1-2-08  
 Steals: 3, vs. Truman, 12-9-06

**SEASON STATS**

GP/S	Pts.-Avg.	FG-A	3FG-A	FT-A	Reb.-Avg.	Ast.	Blk.	Stl.
10/5	57-5.7	23-48	8-25	3-6	38-3.8	8	0	4
		.479	.320	.500				

**CAREER STATS**

GP/S	Pts.-Avg.	FG-A	3FG-A	FT-A	Reb.-Avg.	Ast.	Blk.	Stl.
37/9	206-5.6	78-187	30-95	16-29	115-3.1	32	5	20
		.417	.316	.552				



**2007-08 SEASON HIGHS**

Points: 17, vs. Webster, 11-28-07  
 Field Goals Made: 7, vs. Webster, 11-28-07  
 3-Point FG Made: 3, two times, last vs. Webster, 11-28-07  
 Free Throws Made: 6, vs. Incarnate Word, 11-17-07  
 Rebounds: 6, vs. Webster, 11-28-07  
 Assists: 3, vs. Webster, 11-28-07  
 Steals: 3, three times, last vs. Northeastern State, 12-17-07

**10-TRICE BONNER**  
 5-11, So. Guard/  
 Forward  
 Mobile, Ala.

SEASON STATS								
GP/S	Pts.-Avg.	FG-A	3FG-A	FT-A	Reb.-Avg.	Ast.	Blk.	Stl.
10/0	85-8.5	27-68	14-29	17-21	36-3.6	12	5	17
		.397	.483	.810				



**2007-08 SEASON HIGHS**

Points: 16, vs. St. Edward's, 12-1-07  
 Field Goals Made: 7, vs. St. Edward's, 12-1-07  
 3-Point FG Made: 2, two times, last vs. St. Mary's (Kan.), 11-23-07  
 Free Throws Made: 3, vs. St. Edward's, 11-16-07  
 Rebounds: 7, vs. St. Edward's, 12-1-07  
 Assists: 4, vs. Quincy, 11-24-07  
 Steals: 2, two times, last vs. St. Edward's, 12-1-07

**11-IVANEY MARQUEZ**  
 5-11, Jr., Guard  
 Valencia, Venezuela

SEASON STATS								
GP/S	Pts.-Avg.	FG-A	3FG-A	FT-A	Reb.-Avg.	Ast.	Blk.	Stl.
10/6	48-4.8	17-54	8-27	6-11	35-3.5	18	2	9
		.315	.296	.545				



**2007-08 SEASON HIGHS**

Points: 4, vs. St. Mary's (Kan.), 11-23-07  
 Field Goals Made: 2, vs. St. Mary's (Kan.), 11-23-07  
 3-Point FG Made: N/A  
 Free Throws Made: N/A  
 Rebounds: 1, vs. Webster, 11-28-07  
 Assists: N/A  
 Steals: 2, vs. Webster, 11-28-07

**13-MISTI JOHNSON**  
 5-6, Jr., Guard  
 Gainesville, Mo.

SEASON STATS								
GP/S	Pts.-Avg.	FG-A	3FG-A	FT-A	Reb.-Avg.	Ast.	Blk.	Stl.
3/0	8-2.7	4-8	0-2	0-0	1-0.3	0	0	2
		.500	.000	.000				



**2007-08 SEASON HIGHS**

Points: 2, vs. Evangel, 12-19-07  
 Field Goals Made: None  
 3-Point FG Made: None  
 Free Throws Made: 2, vs. Evangel, 12-19-07  
 Rebounds: None  
 Assists: 2, vs. Evangel, 12-19-07  
 Steals: None

**23-LINDSAY DAVIS**  
 5-8, Jr., Guard  
 Wellington, Kan.

SEASON STATS								
GP/S	Pts.-Avg.	FG-A	3FG-A	FT-A	Reb.-Avg.	Ast.	Blk.	Stl.
3/0	2-0.7	0-1	0-0	2-4	0-0.0	2	0	0
		.000	.000	.500				



**2007-08 SEASON HIGHS**

Points: 12, at Truman, 1-2-08  
 Field Goals Made: 3, at Truman, 1-2-08  
 3-Point FG Made: None  
 Free Throws Made: 6, at Truman, 1-2-08  
 Rebounds: 8, vs. Webster, 11-28-07  
 Assists: 2, three times, last vs. Evangel, 12-19-07  
 Steals: 2, three times, last at Truman, 1-2-08

**33-NICHOLE HELFRICH**  
 6-0, Jr., Forward  
 Beech Grove, Ind.

SEASON STATS								
GP/S	Pts.-Avg.	FG-A	3FG-A	FT-A	Reb.-Avg.	Ast.	Blk.	Stl.
10/2	37-3.7	12-26	0-0	13-16	38-3.8	8	5	10
		.462	.000	.813				



**2007-08 SEASON HIGHS**

Points: 4, vs. Webster, 11-28-07  
 Field Goals Made: 2, vs. Webster, 11-28-07  
 3-Point FG Made: None  
 Free Throws Made: None  
 Rebounds: 3, two times, last vs. Webster, 11-28-07  
 Assists: 1, three times, last at Truman, 1-2-08  
 Steals: 1, vs. Evangel, 12-19-07

**53-BRITTANY VAVAO-HUGGINS**  
 5-11, Fr., Forward  
 Fayetteville, Ark.

SEASON STATS								
GP/S	Pts.-Avg.	FG-A	3FG-A	FT-A	Reb.-Avg.	Ast.	Blk.	Stl.
5/0	6-1.2	3-8	0-0	0-2	7-1.4	3	1	1
		.375	.000	.000				

**Game 1 • Nov. 16, 2007**  
Lions 60, St. Edward's 39

AUSTIN, TEXAS -- The Missouri Southern Lions used a stifling defensive effort and a game-high 18 points from senior Robin Kantin (Silver Spring, Md.) to record a season-opening 60-39 win over the St. Edward's Hilltoppers at the St. Edward's Shootout Friday night (Nov. 16) in Austin, Texas.

MSSU took charge with a 9-0 run to begin the second to expand a seven-point edge into a 16-point cushion with 16:29 remaining in the game.

Whitney Regian sparked an 8-2 run for the Hilltoppers by hitting a pair of free throws and a three-pointer that cut the lead to 10 with 14:09 left.

The Lions responded with a 14-4 burst over the next 6:47 to go up by 20 at 48-28 with just 7:22 left. Trice Bonner (Mobile, Ala.) and India Wood (Decatur, Ala.) each scored five points in that span to key the big run. The Lions maintained at least a 15 point lead the remainder of the contest.

MSSU (1-0) scored the game's first five points and led 9-3 at the 13:38 point of the first half. The Hilltoppers (0-1) then hit six free throws, four by Regian to gain its only lead of the game at 10-9 with 9:56 remaining in the opening half.

The Lions' suffocating defense held St. Edward's to only one field goal in the first half on only 5.6 percent shooting (1-of-18). But turnovers and foul trouble led to the Hilltoppers making 13-of-22 from the charity stripe and trailing only 23-16 at the half.

Missouri Southern (1-0)

	FG	3-PT	FT	R	PF	A	TP
Marquez *	2-5	2-3	3-4	2	1	3	9
Hala'api'api *	1-2	0-0	1-2	3	4	1	3
Wood *	3-8	1-3	0-0	5	1	2	7
Kantin *	7-7	2-2	2-2	8	2	4	18
Zawadka *	0-2	0-1	0-0	0	2	0	0
Henderson	0-0	0-0	0-0	0	1	2	0
Bonner	3-5	1-1	4-4	5	4	0	11
DeVader	0-0	0-0	0-0	0	3	0	0
Helfrich	1-2	0-0	0-0	5	4	0	2
Pierce	5-9	0-1	0-1	6	3	1	10
TOTALS	22-47	6-11	10-13	38	25	13	60
	.550	.545	.769				

St. Edward's (0-1)

	FG	3-PT	FT	R	PF	A	TP
Bartosh *	1-3	1-2	3-6	3	2	2	6
Sumler *	1-4	0-1	1-6	0	3	0	3
Tidwell *	3-12	0-4	4-4	0	2	1	10
Head *	0-2	0-0	0-0	4	3	0	0
Regian *	1-4	1-2	8-9	5	1	0	11
Lara	0-1	0-0	0-0	1	1	0	0
Nagel	0-1	0-1	0-0	0	1	2	0
Etheridge	1-5	0-2	0-1	0	0	1	2
Payton	1-4	0-1	0-0	2	0	0	2
White	0-2	0-0	3-4	0	3	0	3
Starr	0-2	0-0	0-2	0	0	0	0
Rowland	1-1	0-0	0-0	0	0	0	2
Saathoff	0-1	0-0	0-0	0	1	0	0
TOTALS	9-42	2-13	19-32	18	17	6	39
	.214	.154	.594				

Halftime: MSSU 23, STEU 16; Turnovers: MSSU 28, STEU 19; Steals: MSSU 8 (Bonner 3), STEU 6 (Bartosh, Lara 2); Blocked Shots: MSSU 4 (Marquez, Kantin, Henderson, Helfrich), STEU 0.

**Game 2 • Nov. 17, 2007**  
Lions 52, Incarnate Word 43

Austin, Texas -- The Missouri Southern women's basketball team took a lead just two minutes into the second half on a layup from Tynesha Pierce and wouldn't trail then on out, defeating Incarnate Word today, 52-43 in the team's final game at the St. Edwards University Classic in Austin.

Southern (2-0) scored the game's first points on a bucket from Fatai Hala'Api'Api in the game's first possession.

A layup from UIW's (1-1) Kim Robinson at the 16 minute mark, however, gave the Cardinals a six point lead at 10-4.

The Lions re-took the lead at 21-20 on a layup from Robin Kantin with five minutes left. Three's from Danielle DeVader, first at the three minute mark and another with just over a minute left gave the Lions a one point advantage each time, however, a free throw from UIW's Kava Cinnamon with 22 seconds left, gave the Cardinals a one point lead at the half.

Pierce tied the game at 30 with a free-throw to start the second half and her bucket just two minutes in gave the Lions a lead they wouldn't relinquish. The lead was as big as 11, after a free throw from Trice Bonner with 22 seconds remaining, one of six she made in the final 46 seconds.

Missouri Southern (2-0)

	FG	3-PT	FT	R	PF	A	TP
Hala'api'api *	2-2	0-0	1-2	2	5	0	5
Zawadka *	2-4	0-2	1-2	2	0	0	5
Wood *	1-6	1-4	0-0	1	4	6	3
Marquez *	0-1	0-1	0-0	0	0	0	0
Kantin *	3-8	1-4	4-4	2	1	5	11
Henderson	0-0	0-0	0-0	2	0	0	0
Bonner	2-3	2-2	6-6	4	3	0	12
DeVader	2-5	2-5	0-0	5	1	2	6
Helfrich	0-1	0-0	0-0	6	4	0	0
Pierce	4-12	0-0	2-4	7	4	1	10
TOTALS	16-42	6-18	14-18	34	22	14	52
	.381	.333	.778				

Incarnate Word (1-1)

	FG	3-PT	FT	R	PF	A	TP
Harvey *	1-6	0-0	4-8	5	5	0	6
Hardy *	4-7	0-1	4-7	6	2	3	12
Robinson *	2-7	0-4	0-0	5	1	2	4
Torru *	4-13	1-7	0-0	4	2	3	9
Kava *	0-4	0-4	3-4	2	1	0	3
Sledge	0-1	0-1	0-0	2	1	1	0
Greenwood	1-3	1-2	1-2	1	1	0	4
Holden	2-2	0-0	1-2	1	3	0	5
TOTALS	14-43	2-19	13-23	28	16	9	43
	.326	.105	.565				

Halftime: UIW 30, MSSU 29; Turnovers: MSSU 18, UIW 13; Steals: UIW 6 (Harvey, Hardy 2), MSSU 5 (Helfrich 2); Blocked Shots: MSSU 2 (Hala'api'api, Pierce), UIW 2 (Harvey 2).

**Game 3 • Nov. 23, 2007**  
Lions 66, St. Mary's (Kan.) 29

Pittsburg, Kan. - The Missouri Southern Lions held the St. Mary's (Kan.) Spires to a four-percent (1-of-25) shooting percentage in the first half and rolled to a 66-29 win in action at the Pittsburg State Pizza Hut/Comfort Inn Classic Friday night (Nov. 23) in Pittsburg, Kan.

The Lions (3-0) roared out of the gate as seniors Fatai Hala'api'api (Maui, Hawaii) and Tynesha Pierce (Houston, Texas) combined for 14 points in a 15-0 MSSU spurt to begin the game.

The Spires' (3-3) followed that with their lone field goal of the first half that came on a jumper by Jamie Mireles at the 9:39 mark.

Southern then went on a 16-3 run that featured a pair of treys by Trice Bonner (Mobile, Ala.) that put the Lions on top 31-5 with 2:34 remaining in the first half.

The Lions went on to lead 38-7 at halftime

A three-pointer by Ivaney Marquez (Valencia, Venezuela) and a free throw from Fatai gave the Lions their largest lead to that point at 42-7 just 3:10 into the second half.

Katie Joens then scored seven points in a 9-4 St. Mary's run to pull the Spires within 30 with 13:47 left, but the Lions gained their biggest lead of the night with a 16-4 burst that was capped by a three-pointer from Bonner to go ahead 62-20 with 3:43 left.

Missouri Southern (3-0)

	FG	3-PT	FT	R	PF	A	TP
Marquez *	2-6	2-6	0-0	2	2	2	6
Pierce *	7-15	0-0	0-0	6	3	0	14
Wood *	2-7	0-2	1-1	3	1	1	5
Kantin *	2-11	0-1	1-3	8	0	5	5
Zawadka *	0-1	0-0	0-0	7	2	0	0
Henderson	0-3	0-1	0-0	3	0	4	0
Bonner	3-7	3-4	2-2	2	2	2	11
Johnson	2-3	0-1	0-0	0	1	0	4
Hala'api'api	6-11	0-0	7-8	12	0	0	19
DeVader	0-2	0-2	0-0	1	3	1	0
Helfrich	1-2	0-0	0-0	2	3	2	2
Vavao-Huggins	0-2	0-0	0-0	0	1	1	0
TOTALS	25-70	5-17	11-14	50	18	18	66
	.357	.294	.786				

St. Mary's (Kan.) (3-3)

	FG	3-PT	FT	R	PF	A	TP
Helm *	1-6	0-1	2-4	7	1	0	4
Leonard *	1-11	0-1	6-6	5	4	0	8
Teal *	0-1	0-0	0-0	1	0	0	0
Jacobs *	0-0	0-0	0-0	0	2	0	0
Gillispie *	0-5	0-4	0-0	2	2	0	0
Todd	0-0	0-0	0-0	1	1	0	0
Joens	2-5	1-2	4-4	1	3	2	9
Mireles	1-10	0-5	2-2	3	0	0	4
Shea	0-1	0-1	0-0	1	1	1	0
Packham	0-1	0-0	0-0	1	1	0	0
Garcia	2-9	0-0	0-0	7	1	0	4
TOTALS	7-49	1-14	14-16	38	16	3	29
	.326	.105	.565				

Halftime: MSSU 38, St. Mary's 7; Turnovers: St. Mary's 27, MSSU 14; Steals: MSSU 5 (Pierce 3), St. Mary's 3 (Leonard 2); Blocked Shots: MSSU 6 (Hala'api'api 5), St. Mary's 1 (Shea).

**Game 4 • Nov. 24, 2007**  
Lions 83, Quincy 51

Pittsburg, Kan. - Fatai Hala'api'api (Maui, Hawaii) shot a perfect 9-of-9 from the field and scored 19 points and pulled down 12 rebounds to lead the Missouri Southern Lions to a 4-0 start with an 83-51 win over the Quincy Lady Hawks in the final night of the Pittsburg State Pizza Hut/Comfort Inn Classic Saturday night (Nov. 24) in Pittsburg, Kan.

The game was close through much of the first half but the Lions took control with an 18-4 run to snap a 13-13 tie and surge ahead 31-17 with 34 seconds left in the first half.

India Wood (Athens, Ala.) and Danielle DeVader (Holton, Kan.) combined for 14 points during that span, with Wood hitting a trey and converting a three-point play and DeVader knocking in a pair of threes in that stretch. The Lions led 31-18 at the half.

MSSU expanded the lead in the second half behind a 61.3 percent (19-of-31) offensive explosion from the field.

The Lions outscored the Lady Hawks 19-10 to begin the second half and led 50-28 with 14:56 remaining after Fatai converted consecutive field goals.

Southern later went on a 10-0 run to turn a 20-point advantage into a commanding 66-36 lead with 8:52 left in the second half. The Lions then obtained their biggest advantage of the night when Robin Kantin (Silver Spring, Md.) hit from three-point distance to make it 71-37 just 1:51 later.

## Missouri Southern (4-0)

	FG	3-PT	FT	R	PF	A	TP
Pierce *	0-3	0-0	1-2	2	5	0	1
Hala'api'api	9-9	0-0	1-2	12	1	1	19
Wood *	5-10	1-3	2-3	6	1	3	13
Kantin *	4-11	2-4	4-4	4	2	2	14
DeVader *	3-5	3-5	0-0	1	3	1	9
Henderson	0-1	0-0	0-1	4	1	3	0
Bonner	2-9	1-3	1-2	4	1	2	6
Marquez	1-4	0-2	0-1	4	1	4	2
Johnson	1-2	0-0	0-0	0	0	0	2
Zawadka	5-10	3-7	0-0	2	0	3	13
Helfrich	1-2	0-0	0-0	5	3	1	2
Vavao-Huggins	1-1	0-0	0-0	3	1	0	2
TOTALS	32-67	10-24	9-15	53	19	20	83
	.478	.417	.600				

## Quincy (2-2)

	FG	3-PT	FT	R	PF	A	TP
Stellflue *	3-17	1-8	6-8	5	3	3	13
Burgin *	3-9	1-3	2-2	2	3	0	9
Young *	1-4	1-2	1-2	4	2	0	4
Irby *	1-7	0-1	0-0	6	1	3	2
Keller *	3-14	1-3	0-0	5	1	1	7
Gavlick	4-7	0-0	0-1	2	0	1	8
King	0-0	0-0	1-2	0	0	0	1
Lumley	0-0	0-0	0-0	0	0	0	0
Vaughn	0-3	0-0	0-0	0	0	0	0
Shuman	0-1	0-0	0-0	2	0	0	0
Ballenger	1-1	0-0	2-2	1	1	0	4
Koehler	1-4	0-0	1-4	6	1	0	3
TOTALS	17-67	4-17	13-21	38	12	8	51
	.254	.235	.619				

Halftime: MSSU 31, QU 18; Turnovers: MSSU 17, QU 13; Steals: MSSU 4 (Bonner 2), QU 4 (Keller 2); Blocked Shots: MSSU 4 (Hala'api'api 3), QU 3 (Keller 2).

**Game 5 • Nov. 28, 2007**  
Lions 86, Webster 36

Joplin, Mo. - Missouri Southern head coach Maryann Mitts won her 103rd game to move into second-place on the MSSU all-time wins list as the Lions defeated the Webster Gorloks 86-36 Wednesday night (Nov. 28) at the Leggett & Platt Athletic Center. The win moves the Lions to a perfect 5-0 on the season.

The outcome was never in doubt as the Lions scored the first eight points of the game behind five early points from Robin Kantin (Silver Spring, Md.).

MSSU later built the lead to 20 with a 15-2 run over a 5:15 span to lead 27-7 with 10:21 remaining in the first half.

After Julie McGirl made a layup to bring the Gorloks to within 18, the Lions ripped off an 8-0 spurt that was capped by an Ela Zawadka (Torun, Poland) layup to lead 35-9.

The Lions then out-scored Webster 11-5 over the next 4:29 as India Wood (Decatur, Ala.) converted a layup to put the Lions on top 46-14 with 1:11 left in the opening half. Southern would lead 46-16 at the half.

The second half would not be any different as Kantin scored five points to lead a 9-2 Southern run after halftime that made it 55-18 in favor of the Lions with 15:47 remaining.

The largest lead of the night came when Brittany Vavao-Huggins (Fayetteville, Ark.) hit a jumper with 1:57 remaining to give the Lions an 86-35 lead.

## Missouri Southern (5-0)

	FG	3-PT	FT	R	PF	A	TP
Wood *	4-6	0-1	0-0	2	0	3	8
Hala'api'api *	4-6	0-0	2-4	4	1	0	10
Kantin *	4-6	2-4	1-2	1	2	1	11
DeVader *	0-4	0-3	0-0	2	0	3	0
Pierce *	5-10	0-0	0-0	9	3	2	10
Henderson	1-3	0-2	0-0	0	4	2	2
Bonner	7-11	3-5	0-1	6	4	3	17
Marquez	3-9	2-5	0-1	5	1	1	8
Johnson	1-3	0-1	0-0	1	3	0	2
Zawadka	3-4	1-2	1-2	3	1	0	8
Helfrich	1-4	0-0	4-4	8	1	2	6
Vavao-Huggins	2-3	0-0	0-2	3	2	1	4
TOTALS	35-69	8-23	8-16	46	22	18	86
	.507	.348	.500				

## Webster (2-2)

	FG	3-PT	FT	R	PF	A	TP
McQueen *	0-4	0-2	2-2	6	2	6	2
McGill *	3-8	0-0	3-5	1	3	0	9
Goedeker *	0-1	0-0	0-0	1	3	0	0
Chesnek *	0-1	0-0	0-0	1	4	0	0
Meyer *	3-13	1-6	0-0	4	0	0	7
Venegoni	2-4	0-1	2-4	2	1	0	6
Wamser, R.	0-1	0-0	0-0	0	0	0	0
Martin	1-4	1-2	2-2	0	1	1	5
Wamser, J.	1-5	1-5	0-0	5	0	0	3
Vahay	0-3	0-0	1-4	5	1	2	1
VanGennip	0-0	0-0	1-4	1	0	2	1
Gellnett	1-2	0-0	0-0	1	0	0	2
TOTALS	11-46	3-16	11-21	34	15	9	36
	.239	.188	.524				

Halftime: MSSU 46, WU 16; Turnovers: WU 29, MSSU 14; Steals: MSSU 13 (Bonner 3), WU 2 (McQueen, VanGennip); Blocked Shots: MSSU 5 (Helfrich 2), WU 0.

**Game 5 • Nov. 28, 2007**  
Lions 86, Webster 36

Joplin, Mo. - Ivaney Marquez (Valencia, Venezuela) scored a career-high 16 points and the Missouri Southern Lions used another inspiring defensive performance to improve to 6-0 by defeating the St. Edward's Hilltoppers for the second time this season, 60-42 Saturday afternoon (Dec. 1) at the Leggett & Platt Athletic Center.

The Lions also knocked off the Hilltoppers 60-39 back on Nov. 16 at the St. Edward's Shootout in Austin, Texas in the season-opener for both squads.

Southern came out of the gates a bit sluggish, missing their first seven shots and falling into an early 7-0 hole with 14:01 left in the first half.

But Trice Bonner (Mobile, Ala.) knocked down a three-pointer for the Lions' first field-goal with 13:07 left in the half and that sparked a 7-0 Lions spurt that tied the game.

Tynesha Pierce (Houston, Texas) then hit her first two career three-pointers to lead a 13-5 run as the Lions jumped ahead 20-12 with 7:42 remaining in the first half.

The Lions led by as many as 10 in the opening half before taking a 31-23 advantage at halftime.

After the Hilltoppers trimmed the lead to 37-31, Marquez made three consecutive layups and contributed two steals as the Lions outscored STEU 8-0 over the next 3:06 to lead 45-31 with 10:45 left in the game.

The Hilltoppers (2-5) got no closer than 11 the rest of the way.

## Missouri Southern (6-0)

	FG	3-PT	FT	R	PF	A	TP
Wood *	0-4	0-2	0-2	0	2	4	0
Hala'api'api *	5-8	0-0	0-1	3	4	1	10
Kantin *	0-3	0-1	0-0	2	0	1	0
DeVader *	1-3	1-3	2-2	2	0	1	5
Pierce *	3-6	2-2	1-2	2	3	0	9
Henderson	2-2	0-0	0-0	0	3	3	4
Bonner	1-8	1-2	2-2	5	4	0	5
Marquez	7-10	1-3	1-3	7	2	2	16
Johnson	1-3	0-1	0-0	1	3	0	2
Zawadka	2-4	0-2	0-0	6	2	1	4
Helfrich	2-3	0-0	3-5	1	2	0	7
TOTALS	23-51	5-15	9-17	32	22	13	60
	.451	.333	.529				

## St. Edward's (2-5)

	FG	3-PT	FT	R	PF	A	TP
Bartosh *	1-7	0-2	4-8	5	2	2	6
Regian *	2-6	2-3	5-6	3	4	1	11
Sumler *	1-2	0-0	0-0	2	4	0	2
Tidwell *	3-11	2-5	6-8	3	1	0	14
Head *	0-4	0-0	5-6	10	5	1	5
Lara	0-0	0-0	0-0	1	0	0	0
Nagel	0-1	0-1	0-0	4	1	0	0
Etheridge	0-1	0-1	0-0	0	0	0	0
Payton	0-2	0-0	0-0	1	1	0	0
White	0-1	0-0	0-0	0	1	0	0
Starr	0-1	0-1	0-0	1	0	0	0
Rowland	0-1	0-0	0-0	1	0	0	0
Saathoff	2-6	0-0	0-0	3	1	0	4
TOTALS	9-43	4-13	20-28	38	20	4	42
	.209	.308	.714				

Halftime: MSSU 31, STEU 23; Turnovers: STEU 27, MSSU 18; Steals: MSSU 14 (Henderson 3), STEU 4 (Sumler, Tidwell 2); Blocked Shots: MSSU 6 (Hala'api'api 3), STEU 2 (Sumler, Rowland).

### Game 7 • Dec. 7, 2007 Lions 59, OPSU 44

Goodwell, Okla. - Robin Kantin went on a 7-0 run of her own in the second half to help vault the Missouri Southern Lions to a pivotal 59-44 regional win tonight at Oklahoma Panhandle State University.

Southern (7-0) fell down 7-0 early to the Lady Aggies, but a jumper from Tynesha Pierce put the Lions on the board.

A layup from OPSU's (4-4) Ro Wilson made the score 9-2, but jumpers from Fatai Hala'Api'Api and India Wood, as well as a three from Robin Kantin tied the game at nine at the 13 minute mark.

A three from Trice Bonner with 10 minutes left gave Southern its first lead of the game at 15-13 and a jumper from Ela Zawadka a minute later pushed the Lions' lead to 17-14 with 9:41 left. The Lady Aggies went on a 7-0 run behind a three from Sarah Polson and a jumper from Alisha Sladek, as well as a layup from Cherrelle Tillis, giving OPSU a 20-17 lead with 4:58 left.

After a Lady Aggie free throw, Kantin and Wood hit back-to-back jumpers to tie the game at 21 heading into the locker room at the half.

Wood put the Lions back on top hitting a jumper right out of the locker room to start the half. Back-to-back scores from Pierce extended the Lions' lead to 29-24 with 17:32 left in the game, but a three from Polson got the Lady Aggies back to within one, (29-28) with 16:37 left.

That would be as close as OPSU would get. A three from Kantin gave the Lions a nine point advantage (45-36) with 8:26 left and a three from Pierce just 26 seconds later made the lead 11. The Lions would lead by as much as 17 after a three from India Wood, her third of the game, made the score 59-42 with three minutes left.

#### Missouri Southern (7-0)

	FG	3-PT	FT	R	PF	A	TP
Wood *	6-11	3-7	0-0	9	0	3	15
Marquez *	0-4	0-0	0-0	5	1	1	0
Kantin *	6-15	3-10	3-6	3	2	4	18
Zawadka *	1-3	0-1	0-0	3	0	0	2
Pierce *	5-8	1-1	0-0	10	3	2	11
Henderson	1-1	0-0	0-0	0	1	1	2
Bonner	2-3	1-2	0-0	1	3	1	5
Hala'api'api	3-9	0-0	0-4	6	1	1	6
DeVader	0-4	0-4	0-0	2	3	3	0
Helfrich	0-2	0-0	0-0	1	4	1	0
TOTALS	24-60	8-25	3-10	45	18	17	59
	.400	.320	.300				

#### Okla. Panhandle State (4-4)

	FG	3-PT	FT	R	PF	A	TP
Sladek *	3-8	0-2	0-1	2	2	0	6
Polson *	2-10	2-9	0-0	9	4	1	6
Watkins *	1-1	0-0	1-1	1	1	0	3
Maas *	0-1	0-1	0-4	4	2	1	0
Wilson *	5-16	0-0	1-2	12	1	0	11
Terry	0-4	0-4	0-0	1	0	1	0
Cramer	0-0	0-0	0-0	0	1	0	0
Tillis	2-11	0-2	6-8	6	3	1	10
Brown	2-10	0-2	4-9	2	1	1	8
Ortega	0-0	0-0	0-0	0	0	0	0
Rogic	0-0	0-0	0-0	0	1	0	0
TOTALS	15-61	2-20	12-25	46	16	5	44
	.246	.100	.480				

Halftime: MSSU 21, OPSU 21; Turnovers: MSSU 18, OPSU 16; Steals: OPSU 11 (Polson, Tillis 3), MSSU 8 (Wood, Bonner 2); Blocked Shots: MSSU 7 (Hala'api'api 3), OPSU 0.

### Game 8 • Dec. 17, 2007 Lions 70, NSU 62

Tahlequah, Okla. - The No. 24-ranked Missouri Southern Lions used an inspired second half and held on to defeat the Northeastern State Riverhawks 70-62 to improve to a perfect 8-0 on the season Monday night (Dec. 17) in Tahlequah, Okla.

The first half was a see-saw affair and with Southern trailing 31-28, Trice Bonner knocked in a trey and converted two free-throws to give the Lions a 33-31 advantage at the break.

The Lions opened the second half on a 7-0 run to take a 40-31 lead. Tynesha Pierce hit a three-pointer and a layup and India Wood nailed a jumper in transition to key the spurt.

The Riverhawks' Verressa Gaston then converted a three-point play to cut the lead to 40-34, but Ela Zawadka put in one of her three treys on the night to put the Lions back up by nine at 43-34 with 14:58 left.

Southern later out-scored the Riverhawks (3-7) 10-4 over a stretch of 3:45 as Ivaney Marquez capped it with a three-pointer to give the Lions their largest lead of the night at 64-48 with 5:34 remaining in the game.

After the Riverhawks trimmed the lead down to nine, Bonner rebounded her own missed shot and hit a jumper to give the Lions a 68-57 lead with 1:34 left.

But NSU wasn't through as Katie Beshoner made a layup and Sarah Miller hit from long-range to make it 68-62 with 51 seconds remaining.

Wood then missed the front end of a one-on-one opportunity but Marquez made a critical steal on the defensive end and then knocked down a pair of big free throws that put the Lions up by the final margin of 70-62.

#### #24 Missouri Southern (8-0)

	FG	3-PT	FT	R	PF	A	TP
Wood *	3-6	0-2	5-7	5	0	8	11
Kantin *	2-6	0-2	3-3	2	1	0	7
DeVader *	0-2	0-2	0-1	1	1	5	0
Helfrich *	2-3	0-0	0-0	2	3	0	4
Pierce *	4-5	1-2	0-0	1	5	0	9
Henderson	0-0	0-0	0-0	0	0	1	0
Bonner	4-7	1-4	2-4	4	3	2	11
Marquez	1-2	1-1	2-2	1	0	1	5
Hala'api'api	5-11	0-0	0-1	8	3	0	10
Zawadka	5-7	3-5	0-0	2	2	1	13
Davis	0-0	0-0	0-0	0	3	0	0
TOTALS	26-49	6-18	12-18	28	21	18	70
	.531	.333	.667				

#### Northeastern State (3-7)

	FG	3-PT	FT	R	PF	A	TP
Sams *	1-5	0-3	0-0	4	4	7	2
Quintana *	1-10	0-5	0-0	0	1	1	2
Gaston *	3-7	0-0	6-6	6	3	0	12
White *	1-3	1-2	5-6	1	1	3	8
Gordon *	4-6	0-0	0-0	3	2	0	8
Webb	3-4	0-0	0-0	3	3	1	6
Hunter	2-4	2-3	2-2	2	2	0	8
Barnhill	3-5	1-2	2-4	3	3	2	9
Millar	1-3	1-3	0-0	0	1	0	3
Jent	1-2	0-0	0-0	1	0	0	2
Beshoner	1-1	0-0	0-1	1	0	1	2
TOTALS	21-50	5-18	15-19	31	20	15	62
	.420	.278	.789				

Halftime: MSSU 33, NSU 31; Turnovers: NSU 16, MSSU 14; Steals: MSSU 9 (Bonner 3), NSU 3 (Sams, Gordon, Webb); Blocked Shots: MSSU 2 (Bonner, Hala'api'api), NSU 0.

### Game 9 • Dec. 19, 2007 Lions 79, Evangel 62

Joplin, Mo. - Fatai Hala'Api'Api and Tynesha Pierce combined for 44 points to lead the No. 23-ranked Missouri Southern Lions to a 79-62 win over the Evangel Lady Crusaders in their non-conference finale Wednesday night (Dec. 19) at the Leggett & Platt Athletic Center.

The 23rd ranked Lions finish the non-conference portion of their schedule at 9-0, including a perfect 6-0 in the South Central Region.

The Lions led throughout and gained their largest lead of the night as India Wood knocked in a three-pointer to put Southern up 54-36 with 14:02 remaining in the game.

Evangel (2-7) fought back and out-scored the Lions 7-0 over the next 2:41 to come within 54-43 on a trey from Katie Burger.

Southern then gained more breathing room with a 16-10 run and jumped back ahead 70-53 after a pair of free throw by Fatai with 4:25 remaining.

The Lady Crusaders would not go away though and went on a 7-1 spurt that was sparked by five points from Megan Jewell to claw back within 71-60 with 2:42 left in the contest.

But Fatai helped Southern put it away with six points over the next 2:11 as the Lions ended the game on an 8-2 run.

The Lions jumped on Evangel early by scoring 13 of the game's first 15 points as Ela Zawadka knocked in a three and made two jumpers in that span that helped the Lions lead 13-2.

Southern led by as many as 17 on two occasions in the first half, with the last coming after two free throws from Fatai put the Lions up 39-22 with 2:17 left in the first half.

The Lions went on to lead 42-28 at the half.

#### #23 Missouri Southern (9-0)

	FG	3-PT	FT	R	PF	A	TP
Wood *	2-6	1-2	5-10	1	1	9	10
Marquez *	1-7	0-2	0-0	6	4	4	2
DeVader *	1-2	1-2	0-0	2	3	2	3
Helfrich *	1-2	0-0	0-0	3	4	2	2
Pierce *	7-14	0-1	3-3	10	3	2	17
Henderson	1-1	0-0	0-0	1	0	0	2
Bonner	1-4	0-2	0-0	1	1	1	2
Hala'api'api	9-15	0-0	9-10	3	2	0	27
Zawadka	5-8	1-2	1-2	2	2	0	12
Davis	0-1	0-0	2-4	0	1	2	2
Vavao-Huggins	0-1	0-0	0-0	1	1	0	0
TOTALS	28-61	3-11	20-29	31	22	22	79
	.459	.273	.690				

#### Evangel (2-7)

	FG	3-PT	FT	R	PF	A	TP
Hargus *	2-8	2-5	2-2	3	1	0	8
Burger *	3-4	1-1	2-2	5	3	0	9
Mingus *	2-6	1-2	2-2	0	1	1	7
Prentice *	0-2	0-0	0-0	2	1	0	0
Luko *	2-3	0-0	2-2	2	3	2	6
Haraldson	1-1	0-0	2-2	1	2	0	4
Michener	1-1	0-0	1-2	0	2	0	3
Russell	1-3	0-2	2-2	2	2	0	4
Jewell	2-5	2-2	10-10	3	2	3	16
Hogan	2-3	1-2	0-0	3	3	2	5
Pollard	0-0	0-0	0-0	0	4	0	0
TOTALS	16-36	7-14	23-24	29	24	8	62
	.444	.500	.958				

Halftime: MSSU 42, EU 28; Turnovers: EU 23, MSSU 9; Steals: MSSU 9 (Wood, Marquez, DeVader 2), EU 0; Blocked Shots: MSSU 3 (Hala'api'api 2), EU 0.

**Game 10 • Jan. 2, 2007**  
**Truman 68, #16 Lions 55**

Kirksville, Mo. - Georgia Mueller scored a game-high 27 points as the Truman Bulldogs handed the No. 16-ranked Missouri Southern Lions their first loss of the season, 68-55 in the MIAA opener for both schools Wednesday night (Jan. 2) in Kirksville, Mo.

After Trice Bonner capped a 7-0 Lion run with a layup that gave Southern its first lead of the game at 43-41, the Bulldogs out-scored the Lions 24-5 over the next 8:06 to take a commanding 65-48 lead with 5:09 left in the game.

Nichole Helfrich then scored the next seven points to pull Southern within 65-55 with 2:16 left, but Truman (9-1, 1-0 MIAA) hit three free throws down the stretch to ice the victory.

The Bulldogs led throughout the first half and jumped ahead 9-3 as Mueller scored five quick points in the first four minutes of the game.

Fatai Hala'Api'Api hit a pair of jumpers to bring the Lions to 11-10, but the Bulldogs scored the next six and led 17-10 with 12:37 remaining in the first half.

The Lions (9-1, 0-1 MIAA) battled back and tied the score at 19-19 as Randi Henderson nailed a three-pointer and converted a layup in a 9-2 spurt.

Truman stretched the lead to 32-24 before settling for a 35-29 advantage at the half.

**#16 Missouri Southern (9-1, 0-1 MIAA)**

	FG	3-PT	FT	R	PF	A	TP
Henderson *	2-4	1-1	0-1	1	2	2	5
Marquez *	0-6	0-4	0-0	3	1	0	0
Zawadka *	0-5	0-3	0-0	11	2	3	0
DeVader *	2-6	2-6	0-0	4	3	1	6
Pierce *	5-13	0-0	1-2	9	5	0	11
Wood	2-9	0-4	3-5	1	0	1	7
Bonner	2-11	1-4	0-0	4	1	1	5
Hala'api'api	3-6	0-0	3-4	1	5	1	9
Davis	0-0	0-0	0-0	0	1	0	0
Helfrich	3-5	0-0	6-7	5	4	0	12
Vavao-Huggins	0-1	0-0	0-0	0	0	1	0
TOTALS	19-66	4-22	13-19	42	24	10	55
	.288	.182	.684				

**Truman (9-1, 1-0 MIAA)**

	FG	3-PT	FT	R	PF	A	TP
Fowler *	1-3	0-1	2-2	6	1	1	4
Montebello *	3-5	0-1	2-3	4	5	2	8
McGee, Can. *	7-16	4-10	1-3	2	2	2	19
McGee, Car. *	0-6	0-4	4-8	8	1	2	4
Mueller *	9-16	0-0	9-10	12	3	1	27
Guinn	1-3	0-2	2-2	1	1	0	4
Joya	0-0	0-0	2-2	1	1	0	2
Kiecker	0-2	0-0	0-0	4	2	2	0
TOTALS	21-51	4-18	22-30	42	16	10	68
	.444	.500	.958				

Halftime: TSU 35, MSSU 29; Turnovers: TSU 15, MSSU 12; Steals: MSSU 8 (Zawadka, Pierce, Helfrich 2), TSU 5 (Montebello, McGee, Can., McGee, Car., Mueller, Guinn); Blocked Shots: TSU 2 (Mueller 2), MSSU 1 (Hala'api'api).