



# MISSOURI SOUTHERN STATE UNIVERSITY

## WOMEN'S BASKETBALL REPORT

Jan. 2, 2008

FOR IMMEDIATE RELEASE

### No. 16-ranked Lions carry undefeated record into MIAA opener at Truman State

#### 2007-08 LIONS SCHEDULE

DATE	OPPONENT	TIME
Nov. 4	@ Arkansas (EX)	L, 47-52
<b>NOV. 10</b>	<b>LIVIN' THE DREAM (EX)</b>	<b>W, 74-49</b>
Nov. 16	@ St. Edwards	W, 60-39
Nov. 17	vs. Incarnate Word	W, 52-43
Nov. 23	vs. St. Mary's	W, 66-29
Nov. 24	vs. Quincy	W, 83-51
<b>NOV. 28</b>	<b>WEBSTER UNIVERSITY</b>	<b>W, 86-36</b>
<b>DEC. 1</b>	<b>ST. EDWARDS</b>	<b>W, 60-42</b>
Dec. 7	@ OK Panhandle State	W, 59-44
Dec. 17	@ Northeastern State	W, 70-62
<b>DEC. 19</b>	<b>EVANGEL</b>	<b>W, 79-62</b>
Jan. 2	@ Truman State *	5:30 pm
<b>JAN. 5</b>	<b>MISSOURI WESTERN * ..</b>	<b>5:30 PM</b>
<b>JAN. 9</b>	<b>PITTSBURG STATE * .....</b>	<b>5:30 PM</b>
Jan. 12	@ Central Missouri *	1:30 pm
Jan. 16	@ Northwest Missouri *	5:30 pm
<b>JAN. 19</b>	<b>SOUTHWEST BAPTIST * ..</b>	<b>5:30 PM</b>
<b>JAN. 23</b>	<b>EMPORIA STATE * .....</b>	<b>5:30 PM</b>
Jan. 26	@ Fort Hays State *	3 pm
Jan 30	@ Washburn *	5:30 pm
<b>FEB. 2</b>	<b>TRUMAN STATE * .....</b>	<b>1 PM</b>
<b>FEB. 6</b>	<b>WASHBURN * .....</b>	<b>5:30 PM</b>
<b>FEB. 9</b>	<b>FORT HAYS STATE * .....</b>	<b>5:30 PM</b>
Feb. 13	@ Emporia State *	5:30 pm
Feb. 16	@ Southwest Baptist *	5:30 pm
<b>FEB. 20</b>	<b>CENTRAL MISSOURI * ...</b>	<b>5:30 PM</b>
<b>FEB. 23</b>	<b>NORTHWEST MISSOURI * ..</b>	<b>1 PM</b>
Feb. 27	@ Pittsburg State *	5:30 pm
Mar. 1	@ Missouri Western *	5:30 pm
Mar. 6-9	@ MIAA Tournament	TBA (Kansas City, Mo.)

**Bold** Indicates Home Game

\* Indicates MIAA Game

#### No. 16 Missouri Southern (9-0, 0-0 MIAA) at Truman State (8-1, 0-0 MIAA)

Wed. Jan. 2, 2008 • Kirksville, Mo.

**Tipoff:** 5:30 p.m.

**Arena:** Pershing Arena (3,000)

**Last Meeting:** TSU defeated MSSU, 71-55, Jan. 27, 2007 in Kirksville, Mo.

**Radio:** KHST 101.7 FM The Rocket; Kevin Greim (play-by-play)

**TV:** www.themiaa.tv

**Internet Audio:** www.mssu.edu/athletics

**Live Internet Stats:** http://gobulldogs.truman.edu/livestats.aspx

#### PROBABLE STARTERS

#16 LIONS (9-0)		Pos.	Yr.	Ht.	PPG	RPG	APG
5	India Wood (Athens, Ala.)	G	Jr.	5-8	8.0	3.6	4.3
11	Ivaney Marquez (Valencia, Venezuela)	G	Jr.	5-11	5.3	3.6	2.0
22	Danielle DeVader (Holton, Kan.)	G	Jr.	5-9	2.6	1.8	2.0
33	Nichole Helfrich (Beech Grove, Ind.)	F	Jr.	6-0	2.8	3.7	0.9
42	Tynesha Pierce (Houston, Texas)	F	Sr.	6-0	10.1	5.9	0.9
Truman (8-1)		Pos.	Yr.	Ht.	PPG	RPG	APG
2	Katie Fowler (Unionville, Mo.)	G	Sr.	5-11	6.8	7.0	2.3
5	Julia Montebello (Florianoapolis, Brazil)	G	Sr.	5-5	3.8	2.0	4.0
10	Candace McGee (Longview, Ill.)	G	Sr.	5-8	12.1	3.3	2.8
11	Carman McGee (Longview, Ill.)	G	Sr.	5-8	9.4	5.6	2.3
12	Georgia Mueller (Springfield, Ill.)	F	Jr.	5-11	20.9	8.8	2.0

#### THE COACHES

After six straight winning seasons, Maryann Mitts is quickly closing in on becoming the winningest coach in Missouri Southern history. With 107 career victories, Mitts is now the second all-time winningest coach at MSSU and trails Jim Phillips by just 22 games. Under Mitts' guidance, the Lions have put together 15 or more wins in five of Mitts' six years at the helm and have moved back into the upper echelon of the highly competitive Mid-America Intercollegiate Athletics Association. Last year, Mitts helped the Lions overcome an injury-riddled season to post their sixth straight winning record at 14-13, including a tie for fifth place in the MIAA and a sixth consecutive appearance in the MIAA Postseason Tournament. Overall, Mitts has compiled a 107-71 (.601) record in her seventh season with the Lions. She holds a 190-127 (.599) mark now in her 12th year as a collegiate head coach. Mitts is 7-5 vs. Truman during her tenure at MSSU.

John Sloop is in his eighth year as head coach of the Truman women. He holds a 79-119 (.399) career record, with a 8-1 mark so far this season. Sloop, a 1991 graduate of Maryville University in St. Louis, previously served as an assistant for five seasons with the Bulldog men. Sloop is 7-6 vs. Missouri Southern.



CONTACT: LEVI CONVIRS, SPORTS INFORMATION ASSISTANT

EMAIL: SPORTSINFO@MSSU.EDU  
3950 E. NEWMAN RD.  
JOPLIN, MO  
64801-1595

OFFICE: 417/625.9851  
FAX: 417/625.9397  
CELL: 918/533/8707



Visit Missouri Southern Athletics on the web at [www.mssu.edu/athletics](http://www.mssu.edu/athletics)

## 2007-08 MIAA STANDINGS

	MIAA		All Games	
	W-L	Pct.	W-L	Pct.
Missouri Southern (16)	0-0	.000	9-0	1.000
Southwest Baptist	0-0	.000	8-1	.889
Truman State	0-0	.000	8-1	.889
Washburn (4)	0-0	.000	8-1	.889
Emporia State (13)	0-0	.000	7-2	.778
Pittsburg State	0-0	.000	6-3	.667
Fort Hays State	0-0	.000	5-3	.625
Missouri Western	0-0	.000	4-3	.571
Northwest Missouri State	0-0	.000	5-4	.556
Central Missouri	0-0	.000	5-4	.556

WBCA/USA Today/ESPN Division II Coaches Poll ranking in parenthesis

FRIDAY, DECEMBER 28  
+LIVIN' THE DREAM @ UCM, 7:00 PM

SATURDAY, DECEMBER 29  
CENTRAL METHODIST (MO.) @ MWSU, 6:00 PM  
SAINT MARY (KAN.) @ FHSU, 7:00 PM

WEDNESDAY, JANUARY 2  
\*ESU @ FHSU, 5:30 PM  
\*MSSU @ TSU, 5:30 PM  
\*SBU @ NWMSU, 5:30 PM  
\*UCM @ PSU, 5:30 PM  
\*WU @ MWSU, 5:30 PM

SATURDAY, JANUARY 5  
\*PSU @ TSU, 1:00 PM  
\*ESU @ SBU, 1:30 PM  
\*FHSU @ NWMSU, 5:30 PM  
\*MWSU @ MSSU, 5:30 PM  
\*UCM @ WU, 5:30 PM

WEDNESDAY, JANUARY 9  
\*NWMSU @ MWSU, 5:30 PM  
\*PSU @ MSSU, 5:30 PM  
\*SBU @ UCM, 5:30 PM  
\*TSU @ FHSU, 5:30 PM  
\*WU @ ESU, 5:30 PM

### RECENT RESULTS

TUESDAY, DECEMBER 18  
ESU 80 VS. OKLAHOMA PANHANDLE STATE 59 FINAL, @ HOOP 'N' SURF CLASSIC, HONOLULU, HAWAII  
TSU 75 VS. SHAW (N.C.) 52 FINAL, @ HOOP 'N' SURF CLASSIC, HONOLULU, HAWAII  
PSU 74 VS. SOUTHERN ARKANSAS 57 FINAL, @ HENDERSON (ARK.) STATE CLASSIC  
WU 57 VS. CAMERON (OKLA.) 45 FINAL, @ CRUZIN' CLASSIC, FORT LAUDERDALE, FLA.  
MWSU 45 @ HENDERSON (ARK.) STATE 66 FINAL, IN HENDERSON STATE CLASSIC  
SBU 61 @ LINCOLN (MO.) 41 FINAL

WEDNESDAY, DECEMBER 19  
UCM 55 VS. BELLARMINE (KY.) 48 FINAL, @ CRUZIN' CLASSIC, FORT LAUDERDALE, FLA.  
EVANGEL (MO.) 62 @ MSSU 79 FINAL

THURSDAY, DECEMBER 20  
WU 66 VS. CENTRAL OKLAHOMA 56 FINAL, @ CRUZIN' CLASSIC, FORT LAUDERDALE, FLA.  
UCM 68 VS. CAMERON (OKLA.) 71 FINAL, @ CRUZIN' CLASSIC, FORT LAUDERDALE, FLA.  
ARKANSAS-MONTICELLO 68 @ SBU 87 FINAL

## ALL-TIME SERIES VS. TRUMAN

3/3/78	Lions.....	80-65	2/5/00	TSU.....	64-80
2/24/79	TSU .....	50-56	1/6/01	TSU.....	74-91
<b>1/20/90</b>	<b>TSU .....</b>	<b>87-99</b>	<b>2/3/01</b>	<b>TSU.....</b>	<b>69-70*</b>
1/19/91	TSU .....	70-86	<b>1/26/02</b>	<b>Lions .....</b>	<b>80-50</b>
<b>1/18/92</b>	<b>Lions .....</b>	<b>97-52</b>	2/23/02	TSU.....	62-61
1/16/93	Lions .....	90-60	1/25/03	Lions.....	84-73*
<b>1/15/94</b>	<b>Lions .....</b>	<b>88-59</b>	<b>2/22/03</b>	<b>TSU.....</b>	<b>61-66</b>
2/19/94	Lions .....	65-60	12/30/03	Lions.....	68-47
1/14/95	Lions .....	77-72	<b>1/31/04</b>	<b>TSU.....</b>	<b>59-61</b>
<b>2/18/95</b>	<b>Lions .....</b>	<b>93-79</b>	<b>12/29/04</b>	<b>Lions .....</b>	<b>60-58</b>
1/27/96	Lions .....	91-73	1/29/05	TSU.....	56-57
2/15/97	Lions .....	66-55	1/7/06	Lions.....	73-59
<b>1/15/97</b>	<b>Lions .....</b>	<b>80-67</b>	<b>2/18/06</b>	<b>Lions .....</b>	<b>70-56</b>
1/14/98	TSU .....	62-92	<b>12/9/06</b>	<b>Lions .....</b>	<b>53-36</b>
<b>2/14/98</b>	<b>TSU .....</b>	<b>65-74</b>	1/27/07	TSU.....	55-71
<b>2/4/99</b>	<b>TSU .....</b>	<b>59-79</b>			
2/13/99	TSU .....	49-103			
<b>1/8/00</b>	<b>TSU.....</b>	<b>66-81</b>			

INSIDE THE SERIES  
Lions lead: 17-16  
Lions at home: 9-6  
Lions on the road: 7-10  
Lions at neutral site: 1-0  
Most points, MSSU: 97 (97-52), 1/18/92 at Joplin  
Most points, TSU: 103 (103-49), 2/13/99 at Kirksville, Mo.  
Largest victory margin, MSSU: +45 (97-52), 1/18/92 at Joplin  
Largest victory margin, TSU: +54 (103-49), 2/13/99 at Kirksville, Mo.  
Last road win, MSSU: 73-59, 1/7/06  
Last road win, TSU: 61-59, 1/31/04  
Most consecutive wins, MSSU: 9, Jan. 18, 1992-Jan. 15, 1997  
Most consecutive wins, TSU: 8, Jan. 14, 1998-Feb. 3, 2001

\*-OT  
At Joplin in bold

## USA TODAY/ESPN TOP 25

DATE: 1/1/08

Rank	School	Pvs.	Record
1.	University of North Dakota	23	1 13-0
2.	Delta State University (Miss.)	3	2 9-0
3.	Drury University (Mo.)		6 9-1
4.	Washburn University (Kan.)	7	8-1
5.	Concordia, St. Paul (Minn.)	8	12-0
6.	Valdosta State University (Ga.)	9	12-1
7.	University Of Alaska Anchorage	4	11-1
8.	Seattle Pacific University (Wash.)	15	9-0
9.	Indiana University (PA)	5	10-1
10.	Southern CT State University	10	9-2
11.	Holy Family University (Pa.)	13	10-0
12.	University Of California-San Diego	3	10-2
13.	Emporia State (Kan.)	14	7-2
13.	University Of South Dakota	19	13-1
15.	Northern Kentucky University	11	8-2
<b>16.</b>	<b>Missouri Southern</b>	<b>23</b>	<b>9-0</b>
17.	Texas A&M University-Commerce	18	8-2
18.	Stonehill College (Mass.)	16	10-2
19.	Minnesota State, Mankato	21	12-1
20.	USC- Aiken	22	7-1
21.	Clayton State University (Ga.)	17	7-3
22.	California State University, Chico	12	8-3
23.	Franklin Pierce University	25	11-1
24.	West Texas A&M University	20	6-3
25.	Augustana College (S.D.)	NR	13-3

Others Receiving Votes: Barry University (Fla.) - 34; Fairmont State University (W. Va.) - 28; North Georgia College & State University - 26; Concordia College (N.Y.) - 21; Assumption College (Mass.) - 19; Johnson C. Smith University (N.C.) - 18; University of West Georgia - 17; Anderson University (S.C.) - 16; Sonoma State University (Calif.) - 15; Bryant University (R.I.) - 11; Bowie State University (Md.) - 8; University Of Nebraska - Kearney - 8; Fort Lewis College (Colo.) - 7; Armstrong Atlantic State University (Ga.) - 6; Bentley College (Mass.) - 6; Florida Institute of Technology - 6; Michigan Technological University - 6; Ferris State University (Mich.) - 5; University Of Tampa (Fla.) - 5; Arkansas

## MIAA PRESEASON POLL

	Pts.
1. Emporia State (6)	78
2. Washburn (4)	76
3. Northwest Missouri State	58
4. Central Missouri	51
5. Missouri Southern	50
6. Missouri Western	42
7. Pittsburg State	34
8. Fort Hays State	22
Southwest Baptist	22
10. Truman	17

**Last Time vs. Truman State  
(Game 18) Jan. 27, 2007  
Truman 71, Lions 55**

Kirkville, Mo. - The Truman Bulldogs used a strong offensive performance in the first half and followed it up with a great defensive effort in the second and handed the Missouri Southern Lions their sixth straight defeat, 71-55 Saturday afternoon (Jan. 27) in Kirkville, Mo.

Truman maintained the lead throughout and gradually pulled away in building an 11-point lead with a 17-8 run and led 35-24 with 3:15 left in the opening half. The run featured five points each from Candace McGee and Katie Fowler.

The Lions (10-8, 3-7 MIAA) were able to close the deficit down to six as Danielle DeVader (Holton, Kan.) scored eight in the final three minutes of the half and capped it off by hitting a jumper with six seconds left to pull the Lions to within 41-35 at the half.

The Lions came out in the second half and twice were able to come within four points, the last being at the 15:50 mark when a jumper from Tynesha Pierce (Houston, Texas) made the score 45-41 in favor of Truman.

But the Bulldogs ripped off a 9-0 run that gave them their largest advantage of the game at 54-41 with 10:44 remaining.

After an India Wood (Decatur, Ala.) jumper pulled the Lions within 11, Truman responded as a McGee three-pointer capped a 7-0 Truman spurt that gave the Bulldogs a 61-43 advantage with 8:34 left in the contest.

**Missouri Southern (10-8, 3-7 MIAA)**

	FG	3-PT	FT	R	PF	A	TP
Robbs *	4-9	0-0	6-8	6	2	4	14
Pierce *	4-10	0-0	1-1	11	2	0	9
Kantin *	1-5	0-1	0-0	8	2	2	2
DeVader *	5-10	2-6	0-0	5	3	2	12
Kuczynski *	0-7	0-2	2-4	0	0	5	2
Henderson	0-0	0-0	0-0	0	0	0	0
Wood	2-5	0-2	0-2	3	0	1	4
Hala'Api'Api	4-7	0-0	0-0	1	4	0	8
Zawadka	1-4	0-0	2-2	1	2	1	4
TOTALS	21-57	2-11	11-17	37	15	15	55
	.368	.182	.647				

**Truman (8-10, 3-7 MIAA)**

	FG	3-PT	FT	R	PF	A	TP
Mueller *	3-7	0-0	6-8	9	3	0	12
Schupbach *	3-8	0-2	0-0	7	4	1	6
Fowler *	7-10	2-3	0-1	3	1	4	16
Montebello *	1-4	0-0	0-0	0	3	3	2
McGee *	4-13	2-8	4-4	6	1	1	14
Guinn	3-7	3-7	0-0	1	2	1	9
Joya	0-0	0-0	0-0	0	0	0	0
Seberger	3-4	1-1	0-0	6	1	1	7
Gordon	0-0	0-0	2-3	0	0	0	2
Edgeman	1-4	0-2	1-2	1	3	1	3
TOTALS	25-57	8-23	13-18	37	18	12	71
	.439	.348	.722				

Halftime: TSU 41, MSSU 35; Turnovers: MSSU 16, TSU 13; Steals: TSU 11 (Mueller, Montebello, McGee 3), MSSU 7 (Robbs, Pierce 2); Blocked Shots: TSU 2 (Mueller, Edgeman), MSSU 1 (Pierce).

**TALE OF THE TAPE**

MSSU	CATEGORY	TSU
9th, 66.6	Scoring Offense	3rd, 77.4
1st, 40.6	Scoring Defense	3rd, 56.4
1st, +26.0	Scoring Margin	2nd, +21.0
5th, .444	Field Goal Percentage	2nd, .456
3rd, .361	Three-Point FG Percentage	5th, .347
5th, 6.86	Three-Point FG Made/Game	3rd, 7.43
10th, .621	Free Throw Percentage	2nd, .778
1st, .234	Field Goal Pct. Defense	3rd, .356
1st, .161	Three-Point FG Pct. Defense	6th, .291
2nd, 42.6	Rebounding Offense	5th, 40.9
3rd, 34.3	Rebounding Defense	8th, 37.4
3rd, +8.3	Rebounding Margin	5th, +3.4
6th, 16.14	Assists per Game	1st, 21.00
9th, 8.14	Steals per Game	1st, 12.29
2nd, 4.86	Blocked Shots per Game	1st, 5.29
6th, +2.43	Turnover Margin	3rd, +4.14
7th, 0.89	Assist-Turnover Ratio	2nd, 1.29
T-4th, 14.86	Offensive Rebounds	9th, 12.29
3rd, 27.71	Defensive Rebounds	2nd, 28.57

MIAA rankings through games of Dec. 16

**2007-08 STARTING FIVES**

Pierce, Hala'api'api, Wood, Kantin, DeVader.....	3-0
Marquez, Hala'api'api, Wood, Kantin, Zawadka .....	2-0
Marquez, Pierce, Wood, Kantin, Zawadka .....	2-0
Wood, Kantin, DeVader, Helfrich, Pierce .....	1-0
Wood, Marquez, DeVader, Helfrich, Pierce.....	1-0

**THE LIONS RECORD WHEN ...**

	2007-08	Under Mitts
Scoring 59 points or less .....	2-0	12-42
Scoring 60-69 points.....	3-0	39-24
Scoring 70-79 points.....	2-0	29-4
Scoring 80+ points .....	2-0	27-1
Allowing 59 points or less .....	7-0	62-7
Allowing 60-69 points .....	2-0	34-25
Allowing 70-79 points .....	0-0	9-28
Allowing 80+ points.....	0-0	2-11
Game decided by 3 pts. or less ..	0-0	17-9
Game decided by 4-9 pts. ....	2-0	29-24
Game decided by 10-19 pts. ....	3-0	29-23
Game decided by 20 or more....	4-0	32-16
Lead in rebounding.....	6-0	78-27
Trail in rebounding .....	3-0	27-37
Tie in rebounding.....	0-0	2-7
Have more turnovers .....	4-0	38-52
Have fewer turnovers.....	5-0	58-18
Tie in turnovers .....	0-0	11-1
Lead at halftime.....	7-0	81-14
Trail at halftime .....	1-0	21-51
Tied at halftime .....	1-0	5-6
Outshoot opponents (pct.).....	9-0	86-14
Opponent outshoots (pct.).....	0-0	20-56
Tie in shooting (pct.).....	0-0	1-1
Make more free throws .....	1-0	61-15
Make less free throws .....	8-0	45-52
Tie in free throws.....	0-0	2-5
Make more threes .....	8-0	74-25
Make less threes .....	1-0	29-38
Tie in threes .....	0-0	5-8
Have more assists .....	9-0	78-14
Have fewer assists .....	0-0	25-54
Tie in assists.....	0-0	3-4
Have more steals .....	6-0	76-24
Have fewer steals.....	2-0	23-39
Tie in steals .....	1-0	8-9
Get more bench points .....	8-0	58-30
Get fewer bench points .....	1-0	44-39
Tie in bench points .....	0-0	5-2
Game goes into overtime .....	0-0	4-2
In November .....	5-0	29-5
In December.....	4-0	26-8
In January.....	0-0	25-28
In February.....	0-0	23-23
In March.....	0-0	0-6
vs. Nationally-Ranked Foes .....	0-0	7-24

**THE DISH ON SOUTHERN (9-0)**

The No. 23-ranked Missouri Southern Lions

## THE 2007-08 LIONS AT-A-GLANCE

No.	Name	Pos.	Ht.	Yr.	Hometown/Previous School
2	Randi Henderson	G	5-4	So.	Urbana, Mo./Skyline HS
5	India Wood	G	5-7	Jr.	Decatur, Ala./Eastern Kentucky University
10	Trice Bonner	G/F	5-11	So.	Mobile, Ala./Okaloosa Walton CC
11	Ivaney Marquez	G	5-11	Jr.	Valencia, Venezuela/Grayson CC
13	Misti Johnson	G	5-6	Jr.	Gainsville, Mo./Mo Valley
15	Fatai Hala'Api'Api	C	6-1	Sr.	Maui, Hi./Eastern Kentucky University
20	Robin Kantin	G	5-8	Sr.	Silver Spring, Md./Radford (Va.) University
21	Ela Zawadka	G	5-11	Sr.	Torun, Poland/Frank Phillips
22	Danielle DeVader	G	5-9	Jr.	Holton, Kan./Holton HS
23	Lindsey Davis	G	5-8	Jr.	Wellington, Kan./Cowley CC
33	Nichole Helfrich	F	6-0	Jr.	Beech Grove, Ind./Missouri-St. Louis
42	Tynesha Pierce	F/C	6-0	Sr.	Houston, Texas/UT-Pan American
53	Brittany Vavao-Huggins	F	5-11	Fr.	Fayetteville, Ark./Fayetteville HS

Head Coach: Maryann Mitts

Assistant Coaches: Ronda Hubbard, Chris Kendrick, Tyrone Jones

concluded non-conference action with a 79-62 win over Evangel on Dec. 19. Senior Fatai Hala'Api'Api scored a career-high 27 to lead the Lions. Senior Tynesha Pierce scored 17 and pulled down a game-high 10 rebounds. Junior India Wood recorded a career-best nine assists in the win for Southern.

Fatai leads the Lions with 12.1 points per game and 5.9 boards. Senior Robin Kantin scores 10.5 ppg and Pierce averages 10.1 ppg and is tied with Fatai for the team-lead with 5.9 rpg. Wood leads the team with 39 assists.

### THE DISH ON THE BULLDOGS (8-1)

The Truman Bulldogs wrapped up non-conference play with an 8-1 mark after defeating previously ranked Shaw (N.C.) 75-52 on Dec. 18 in Hawaii. Georgia Mueller led the Bulldogs with 19 in the win. The Bulldogs' lone loss of the season came against regional foe Quincy (Ill.), 86-69 back on Dec. 5.

The Bulldogs are led in scoring by Mueller with 20.9 points per game. Mueller also leads Truman with 8.8 rebounds a game. Candace McGee is second on the team in scoring with 12.1 ppg, while Julia Montebello has dished out a team-best 36 assists on the season.

### THE SERIES

The Lions hold a slim, 17-16 advantage in the all-time series against Truman after splitting the season series last year. Southern lost 71-55 last year on the road and is 7-10 all-time vs. Truman in Kirksville, Mo.

### HALFWAY WILL GET YOU THERE

Even though the game does not officially end at halftime, Missouri Southern has shown that if it can get the lead at the break, they know how to protect it and finish on top. The Lions are a sparkling 81-14 under Maryann Mitts when they have the edge at the half, including a perfect 7-0 this season.

### LIONS NATIONALLY RANKED

After making their first appearance in the USA Today/Women's Basketball Coaches Association Division II National Poll since the end of the 1995-96 season as the 24th ranked squad last week, the 9-0 Lions have moved up one spot to No. 23 in the latest rankings.

MSSU is the lone undefeated team in the South Central region and are a perfect 6-0 in the region. The Lions have regional victories

over St. Edward's (2), Incarnate Word, Quincy, Panhandle State and Northeastern State.

### STRONG OUT OF THE GATE

The Missouri Southern Lions have been notorious fast starters under head coach Maryann Mitts. This season has been no different as the Lions are 9-0 so far this year. These solid starts have led to the Lions entering the MIAA conference season with a lot of momentum, as Southern is now a combined 55-13 in November and December under Mitts.

### STATISTICAL PACE-SETTERS

The Missouri Southern Lions are quickly becoming a force to be reckoned with, particularly on defense. Through games of Dec. 16, the Lions currently lead the MIAA in scoring defense (40.6 ppg), scoring margin (+26 ppg), field-goal percentage defense (.234) and three-point field-goal percentage defense (.161). The Lions are second in rebounding offense (42.6) and blocked shots (4.86 bpg).

Individually, Trice Bonner leads the MIAA in three-point field-goal percentage (63.2 percent) and Fatai Hala'api'api ranks second in blocks (2.29 bpg).

Also through games of Dec. 16, the Lions currently lead all of NCAA Division II in field-goal percentage defense and rank second in scoring defense. They rank seventh in the nation in scoring margin and 17th in blocked shots, with Fatai Hala'api'api tied for 18th in individual blocks.

### MITTS CHASING HISTORY

By defeating the Webster Gorlocks 86-36 on Nov. 28, MSSU head coach Maryann Mitts passed Scott Ballard for second-place on the MSSU all-time wins list. She currently needs just 22 more wins to tie Jim Phillips for most victories all-time at Southern.

Mitts is in her seventh season at MSSU and is 107-71 (.601) overall.

### UP NEXT

The Lions will welcome in Missouri Western for their 2007-08 MIAA home opener on Saturday night (Jan. 5). Tip-off is set for 5:30 p.m. at the Leggett & Platt Athletic Center. The Lions and Griffons split a pair of meetings last year, with the Lions win coming in the regular season finale when MWSU was ranked No. 2 in the nation.

Missouri Southern Basketball  
 #23 Missouri Southern Season Box Score (as of Dec 19, 2007)  
 All games

RECORD:	OVERALL	HOME	AWAY	NEUTRAL
ALL GAMES.....	(9-0)	(3-0)	(3-0)	(3-0)
CONFERENCE.....	(0-0)	(0-0)	(0-0)	(0-0)
NON-CONFERENCE.....	(9-0)	(3-0)	(3-0)	(3-0)

##	Player	GP-GS	Min--Avg	---TOTAL---		---3-PTS---		FT-FTA	Pct	---REBOUNDS---				PF	FO	A	TO	Blk	Stl	Pts	Avg
				FG-FGA	Pct	3FG-FGA	Pct			Off	Def	Tot	Avg								
15	Hala'Api'Api,Fatai	9-5	174 19.3	44-73	.603	0-0	.000	21-34	.618	21	32	53	5.9	21	1	4	18	19	4	109	12.1
20	Kantin,Robin	8-8	205 25.6	28-67	.418	10-28	.357	18-24	.750	12	18	30	3.8	10	0	22	16	1	5	84	10.5
42	Pierce,Tynesha	9-7	159 17.7	40-82	.488	4-7	.571	7-12	.583	28	25	53	5.9	32	2	8	11	4	9	91	10.1
10	Bonner,Trice	9-0	154 17.1	25-57	.439	13-25	.520	17-21	.810	12	20	32	3.6	25	0	11	23	5	16	80	8.9
05	Wood,India	9-9	259 28.8	26-64	.406	7-26	.269	13-23	.565	1	31	32	3.6	10	0	39	17	0	8	72	8.0
21	Zawadka,Ela	9-4	187 20.8	23-43	.535	8-22	.364	3-6	.500	7	20	27	3.0	11	0	5	17	0	2	57	6.3
11	Marquez,Ivaney	9-5	150 16.7	17-48	.354	8-23	.348	6-11	.545	18	14	32	3.6	12	0	18	12	2	8	48	5.3
33	Helfrich,Nichole	9-2	170 18.9	9-21	.429	0-0	.000	7-9	.778	15	18	33	3.7	28	0	8	12	5	8	25	2.8
13	Johnson,Misti	3-0	23 7.7	4-8	.500	0-2	.000	0-0	.000	0	1	1	0.3	4	0	0	2	0	2	8	2.7
22	DeVader,Danielle	9-5	157 17.4	7-27	.259	7-26	.269	2-3	.667	4	12	16	1.8	17	0	18	10	0	7	23	2.6
53	Vavao-Huggins,Britt	4-0	32 8.0	3-7	.429	0-0	.000	0-2	.000	1	6	7	1.8	5	0	2	1	1	1	6	1.5
02	Henderson,Randi	9-0	116 12.9	5-11	.455	0-3	.000	0-1	.000	2	8	10	1.1	10	0	16	7	2	5	10	1.1
23	Davis,Lindsey	2-0	14 7.0	0-1	.000	0-0	.000	2-4	.500	0	0	0	0.0	4	0	2	3	0	0	2	1.0
TEAM.....										8	23	31	3.4	0		1					
Total.....		9	1800	231-509	.454	57-162	.352	96-150	.640	129	228	357	39.7	189	3	153	150	39	75	615	68.3
Opponents.....		9	1800	119-437	.272	30-144	.208	140-209	.670	121	179	300	33.3	156	2	67	183	8	39	408	45.3

DATE	TIME	OPPONENT	SCORE	ATTEND	HIGH POINTS	HIGH REBOUNDS
11/16/07	5:30 p.m.	at St. Edward's	W <u>60-39</u>	297	(18)Kantin,Robin	(8)Kantin,Robin
11/17/07	1:00 p.m.	vs Incarnate Word	W <u>52-43</u>	128	(12)Bonner,Trice	(7)Pierce,Tynesha
11/23/07	5:30 pm CST	vs Saint Mary (Kan.)	W <u>66-29</u>	100	(19)Hala'Api'Api,Fatai	(12)Hala'Api'Api,Fatai
11/24/07	5:30 pm CST	vs Quincy	W <u>83-51</u>	110	(19)Hala'Api'Api,Fatai	(12)Hala'Api'Api,Fatai
11/28/07	6 PM	WEBSTER UNIVERSITY	W <u>86-36</u>	1125	(17)Bonner,Trice	(9)Pierce,Tynesha
12/1/07	1 PM	ST. EDWARD'S	W <u>60-42</u>	225	(16)Marquez,Ivaney	(7)Marquez,Ivaney
12/7/07	7 PM	at Okla. Panhandle State	W <u>59-44</u>		(18)Kantin,Robin	(10)Pierce,Tynesha
12/17/07	6:00 pm	at Northeastern State	W <u>70-62</u>	400	(13)Zawadka,Ela	(8)Hala'Api'Api,Fatai
12/19/07	7 PM	EVANGEL	W <u>79-62</u>	406	(27)Hala'Api'Api,Fatai	(10)Pierce,Tynesha

\* - Conference game

ATTENDANCE SUMMARY	GAMES	TOTALS	AVG/GAME
HOME.....	3	1756	585
AWAY.....	3	697	232
NEUTRAL.....	3	338	113
TOTAL.....	9	2791	310

# THE 2007-08 LIONS



## 2007-08 SEASON HIGHS

Points: 9, vs. Quincy, 11-24-07  
 Rebounds: 5, vs. Incarnate Word, 11-17-07  
 Field Goals: 3, vs. Quincy, 11-24-07  
 3-Point FG: 3, vs. Quincy, 11-24-07  
 Free Throws Made: 2, vs. St. Edward's, 12-1-07  
 Assists: 5, vs. Northeastern State, 12-17-07  
 Steals: 2, three times, last vs. Evangel, 12-19-07

**22-Danielle DeVader**  
 5-9 • Jr. •  
 Guard  
 Holton, Kan.

## CAREER HIGHS

Points: 18, two times, last vs. Ozark Christian, 12-06-05  
 Rebounds: 9, two times, last vs. Washburn, 1-24-07  
 Field Goals: 6, three times, last vs. Panhandle State, 11-29-06  
 3-Point FG: 6, vs. Ozark Christian, 12-06-05  
 Free Throws Made: 6, two times, last vs. Mo. Western, 2-24-07  
 Assists: 5, vs. Northeastern State, 12-17-07  
 Steals: 4, vs. Newman, 11-25-06

SEASON STATS								
GP/S	Pts.-Avg.	FG-A	3FG-A	FT-A	Reb.-Avg.	Ast.	Blk.	Stl.
9/5	23-2.6	7-27	7-26	2-3	16-1.8	18	0	7
		.259	.269	.667				

CAREER STATS								
GP/S	Pts.-Avg.	FG-A	3FG-A	FT-A	Reb.-Avg.	Ast.	Blk.	Stl.
48/29	354-7.4	111-278	86-222	46-51	152-3.2	73	12	40
		.399	.387	.902				



## 2007-08 SEASON HIGHS

Points: 17, vs. Evangel, 12-19-07  
 Rebounds: 10, two times, last vs. Evangel, 12-19-07  
 Field Goals Made: 7, two times, last vs. Evangel, 12-19-07  
 3-Point FG Made: 2, vs. St. Edward's, 12-1-07  
 Free Throws Made: 3, vs. Evangel, 12-19-07  
 Assists: 2, three times, last vs. Evangel, 12-19-07  
 Steals: 3, vs. St. Mary's (Kan.), 11-23-07

**42-TYNESHA PIERCE**  
 6-0, Sr., Forward/  
 Center  
 Houston, Texas

## CAREER HIGHS

Points: 26, vs. Evangel, 11-24-06  
 Rebounds: 13, vs. Pittsburg State, 2-21-07  
 Field Goals Made: 11, vs. Evangel, 11-24-06  
 3-Point FG Made: 2, vs. St. Edward's, 12-1-07  
 Free Throws Made: 6, two times, last vs. Mo. Western, 2-24-07  
 Assists: 2, three times, last vs. Webster, 11-28-07  
 Steals: 4, vs. Harris-Stowe State, 12-5-06

SEASON STATS								
GP/S	Pts.-Avg.	FG-A	3FG-A	FT-A	Reb.-Avg.	Ast.	Blk.	Stl.
9/7	91-10.1	40-82	4-7	7-12	53-5.9	8	4	9
		.488	.571	.583				

CAREER STATS								
GP/S	Pts.-Avg.	FG-A	3FG-A	FT-A	Reb.-Avg.	Ast.	Blk.	Stl.
36/29	428-11.9	176-363	4-7	72-87	219-6.1	23	44	48
		.485	.571	.828				



## 2007-08 SEASON HIGHS

Points: 18, two times, last vs. Panhandle State, 12-7-07  
 Rebounds: 8, two times, last vs. St. Mary's (Kan.), 11-23-07  
 Field Goals: 7, vs. St. Edward's, 11-16-07  
 3-Point FG: 3, vs. Panhandle State, 12-7-07  
 Free Throws Made: 4, two times, last vs. Quincy, 11-24-07  
 Assists: 5, two times, last vs. St. Mary's (Kan.), 11-23-07  
 Steals: 2, vs. St. Edward's, 12-1-07

**20-Robin Kantin**  
 5-8 • Sr. •  
 Guard  
 Silver Spring, Md.

## CAREER HIGHS

Points: 20, two times, last vs. Central Methodist, 11-21-06  
 Rebounds: 12, two times, last vs. Mo. Western, 1-28-06  
 Field Goals: 10, vs. Newman (Kan.), 11-30-05  
 3-Point FG: 5, at Fort Hays State, 2-3-07  
 Free Throws Made: 9, vs. Missouri Western, 1-28-06  
 Assists: 6, at Truman State, 1-7-06  
 Steals: 6, at East Central, 12-20-05

SEASON STATS								
GP/S	Pts.-Avg.	FG-A	3FG-A	FT-A	Reb.-Avg.	Ast.	Blk.	Stl.
8/8	84-10.5	28-67	10-28	18-24	30-3.8	22	1	5
		.418	.357	.750				

CAREER STATS								
GP/S	Pts.-Avg.	FG-A	3FG-A	FT-A	Reb.-Avg.	Ast.	Blk.	Stl.
63/61	695-11.0	227-546	39-122	200-274	331-5.3	165	9	76
		.416	.320	.730				



## 2007-08 SEASON HIGHS

Points: 27, vs. Evangel, 12-19-07  
 Field Goals 9, two times, last vs. Evangel, 12-19-07  
 3-Point FG Made: None  
 Free Throws Made: 9, vs. Evangel, 12-19-07  
 Rebounds: 12, two times, last vs. Quincy, 11-24-07  
 Assists: 1, four times, last vs. Panhandle State, 12-7-07  
 Steals: 2, vs. St. Edward's, 11-16-07

**15-FATALA HALA'API'API**  
 6-1, Sr., Center  
 Lahaina, Hawaii

## CAREER HIGHS

Points: 27, vs. Evangel, 12-19-07  
 Field Goals 9, two times, last vs. Evangel, 12-19-07  
 3-Point FG Made: None  
 Free Throws Made: 9, vs. Evangel, 12-19-07  
 Rebounds: 14, vs. Central Missouri, 1-6-07  
 Assists: 3, vs. Emporia State, 2-7-07  
 Steals: 2, five times, last vs. St. Edward's, 11-16-07

SEASON STATS								
GP/S	Pts.-Avg.	FG-A	3FG-A	FT-A	Reb.-Avg.	Ast.	Blk.	Stl.
9/5	109-12.1	44-73	0-0	21-34	53-5.9	4	19	4
		.603	.000	.618				

CAREER STATS								
GP/S	Pts.-Avg.	FG-A	3FG-A	FT-A	Reb.-Avg.	Ast.	Blk.	Stl.
29/16	313-10.8	131-237	0-0	51-85	161-5.6	14	49	21
		.553	.000	.600				



**2007-08 SEASON HIGHS**

Points: 4, vs. St. Edward's, 12-1-07  
 Field Goals 2, vs. St. Edward's, 12-1-07  
 3-Point FG Made: None  
 Free Throws Made: None  
 Rebounds: 4, vs. Quincy, 11-24-07  
 Assists: 4, vs. St. Mary's (Kan.), 11-23-07  
 Steals: 3, vs. St. Edward's, 12-1-07

**2-RANDI HENDERSON**  
 5-4, So., Guard  
 Urbana, Mo

**CAREER HIGHS**

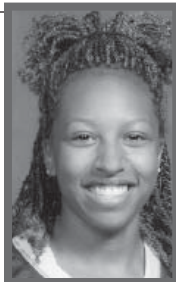
Points: 3, at Southwest Baptist, 1-22-07  
 Field Goals 1, three times, last vs. Webster, 11-28-07  
 3-Point FG Made: 1, at Southwest Baptist, 1-22-07  
 Free Throws Made: 2, two times, last vs. Southwest Baptist, 2-10-07  
 Rebounds: 4, vs. Quincy, 11-24-07  
 Assists: 4, two times, last vs. St. Mary's (Kan.), 11-23-07  
 Steals: 3, vs. St. Edward's, 12-1-07

**SEASON STATS**

GP/S	Pts.-Avg.	FG-A	3FG-A	FT-A	Reb.-Avg.	Ast.	Blk.	Stl.
9/0	10-1.1	5-11	0-3	0-1	10-1.1	16	2	5
		.455	.000	.000				

**CAREER STATS**

GP/S	Pts.-Avg.	FG-A	3FG-A	FT-A	Reb.-Avg.	Ast.	Blk.	Stl.
31/0	19-0.6	7-24	1-13	4-5	20-0.6	32	5	14
		.292	.077	.800				



**2007-08 SEASON HIGHS**

Points: 15, vs. Panhandle State, 12-7-07  
 Field Goals 6, vs. Panhandle State, 12-7-07  
 3-Point FG Made: 3, vs. Panhandle State, 12-7-07  
 Free Throws Made: 5, two times, last vs. Evangel, 12-19-07  
 Rebounds: 9, vs. Panhandle State, 12-7-07  
 Assists: 9, vs. Evangel, 12-19-07  
 Steals: 2, two times, last vs. Evangel, 12-19-07

**5-INDIA WOOD**  
 5-7, Jr., Guard  
 Decatur, Ala.

**CAREER HIGHS**

Points: 15, vs. Panhandle State, 12-7-07  
 Field Goals 6, vs. Panhandle State, 12-7-07  
 3-Point FG Made: 3, vs. Panhandle State, 12-7-07  
 Free Throws Made: 5, two times, last vs. Evangel, 12-19-07  
 Rebounds: 9, vs. Panhandle State, 12-7-07  
 Assists: 9, vs. Evangel, 12-19-07  
 Steals: 3, at Emporia State, 1-17-07

**SEASON STATS**

GP/S	Pts.-Avg.	FG-A	3FG-A	FT-A	Reb.-Avg.	Ast.	Blk.	Stl.
9/9	72-8.0	26-64	7-26	13-23	32-3.6	39	5	16
		.406	.269	.565				

**CAREER STATS**

GP/S	Pts.-Avg.	FG-A	3FG-A	FT-A	Reb.-Avg.	Ast.	Blk.	Stl.
29/11	149-5.1	52-148	18-65	27-46	71-2.4	91	2	19
		.351	.277	.587				



**2007-08 SEASON HIGHS**

Points: 13, two times, last vs. Northeastern State, 12-17-07  
 Rebounds: 7, vs. St. Mary's (Kan.), 11-23-07  
 Field Goals Made: 5, three times, last vs. Evangel, 12-19-07  
 3-Point FG Made: 3, two times, last vs. Northeastern State, 12-17-07  
 Free Throws Made: 1, three times, last vs. Evangel, 12-19-07  
 Assists: 3, vs. Quincy, 11-24-07  
 Steals: 1, two times, last vs. Panhandle State, 12-7-07

**21-ELA ZAWADKA**  
 5-11, Sr., Guard  
 Torun, Poland

**CAREER HIGHS**

Points: 15, at Central Missouri, 2-14-07  
 Rebounds: 10, vs. Harris-Stowe State, 12-5-06  
 Field Goals Made: 6, at Central Missouri, 2-14-07  
 3-Point FG Made: 3, three times, last vs. Northeastern State, 12-17-07  
 Free Throws Made: 2, five times, last at Northwest Missouri State, 2-17-07  
 Assists: 3, two times, last vs. Quincy, 11-24-07  
 Steals: 3, vs. Truman, 12-9-06

**SEASON STATS**

GP/S	Pts.-Avg.	FG-A	3FG-A	FT-A	Reb.-Avg.	Ast.	Blk.	Stl.
9/4	57-6.3	23-43	8-22	3-6	27-3.0	5	0	2
		.535	.364	.500				

**CAREER STATS**

GP/S	Pts.-Avg.	FG-A	3FG-A	FT-A	Reb.-Avg.	Ast.	Blk.	Stl.
36/8	206-5.7	78-182	30-92	16-29	104-2.9	29	5	18
		.429	.326	.552				



**2007-08 SEASON HIGHS**

Points: 17, vs. Webster, 11-28-07  
 Field Goals Made: 7, vs. Webster, 11-28-07  
 3-Point FG Made: 3, two times, last vs. Webster, 11-28-07  
 Free Throws Made: 6, vs. Incarnate Word, 11-17-07  
 Rebounds: 6, vs. Webster, 11-28-07  
 Assists: 3, vs. Webster, 11-28-07  
 Steals: 3, three times, last vs. Northeastern State, 12-17-07

**10-TRICE BONNER**  
 5-11, So. Guard/  
 Forward  
 Mobile, Ala.



**2007-08 SEASON HIGHS**

Points: 16, vs. St. Edward's, 12-1-07  
 Field Goals Made: 7, vs. St. Edward's, 12-1-07  
 3-Point FG Made: 2, two times, last vs. St. Mary's (Kan.), 11-23-07  
 Free Throws Made: 3, vs. St. Edward's, 11-16-07  
 Rebounds: 7, vs. St. Edward's, 12-1-07  
 Assists: 4, vs. Quincy, 11-24-07  
 Steals: 2, two times, last vs. St. Edward's, 12-1-07

**11-IVANEY MARQUEZ**  
 5-11, Jr., Guard  
 Valencia, Venezuela

**SEASON STATS**

GP/S	Pts.-Avg.	FG-A	3FG-A	FT-A	Reb.-Avg.	Ast.	Blk.	Stl.
9/0	80-8.9	25-57	13-25	17-21	32-3.6	11	5	16
		.439	.520	.810				

**SEASON STATS**

GP/S	Pts.-Avg.	FG-A	3FG-A	FT-A	Reb.-Avg.	Ast.	Blk.	Stl.
9/5	48-5.3	17-48	8-23	6-11	32-3.6	18	2	8
		.354	.348	.545				



**2007-08 SEASON HIGHS**

Points: 4, vs. St. Mary's (Kan.), 11-23-07  
 Field Goals Made: 2, vs. St. Mary's (Kan.), 11-23-07  
 3-Point FG Made: N/A  
 Free Throws Made: N/A  
 Rebounds: 1, vs. Webster, 11-28-07  
 Assists: N/A  
 Steals: 2, vs. Webster, 11-28-07

**13-MISTI JOHNSON**  
 5-6, Jr., Guard  
 Gainsville, Mo.

**SEASON STATS**

GP/S	Pts.-Avg.	FG-A	3FG-A	FT-A	Reb.-Avg.	Ast.	Blk.	Stl.
3/0	8-2.7	4-8	0-2	0-0	1-0.3	0	0	2
		.500	.000	.000				



**2007-08 SEASON HIGHS**

Points: 2, vs. Evangel, 12-19-07  
 Field Goals Made: None  
 3-Point FG Made: None  
 Free Throws Made: 2, vs. Evangel, 12-19-07  
 Rebounds: None  
 Assists: 2, vs. Evangel, 12-19-07  
 Steals: None

**23-LINDSAY DAVIS**  
 5-8, Jr., Guard  
 Wellington, Kan.

**SEASON STATS**

GP/S	Pts.-Avg.	FG-A	3FG-A	FT-A	Reb.-Avg.	Ast.	Blk.	Stl.
1/0	0-0.0	0-0	0-0	0-0	0-0.0	0	0	0



**2007-08 SEASON HIGHS**

Points: 7, vs. St. Edward's, 12-1-07  
 Field Goals Made: 2, two times, last vs. Northeastern State, 12-17-07  
 3-Point FG Made: None  
 Free Throws Made: 4, vs. Webster, 11-28-07  
 Rebounds: 8, vs. Webster, 11-28-07  
 Assists: 2, three times, last vs. Evangel, 12-19-07  
 Steals: 2, two times, last vs. St. Edward's, 12-1-07

**33-NICHOLE HELFRICH**  
 6-0, Jr., Forward  
 Beech Grove, Ind.

**SEASON STATS**

GP/S	Pts.-Avg.	FG-A	3FG-A	FT-A	Reb.-Avg.	Ast.	Blk.	Stl.
9/2	25-2.8	9-21	0-0	7-9	33-3.7	8	5	8
		.429	.000	.778				



**2007-08 SEASON HIGHS**

Points: 4, vs. Webster, 11-28-07  
 Field Goals Made: 2, vs. Webster, 11-28-07  
 3-Point FG Made: None  
 Free Throws Made: None  
 Rebounds: 3, two times, last vs. Webster, 11-28-07  
 Assists: 1, two times, last vs. Webster, 11-28-07  
 Steals: 1, vs. Evangel, 12-19-07

**53-BRITTANY VAVAO-HUGGINS**  
 5-11, Fr., Forward  
 Fayetteville, Ark.

**SEASON STATS**

GP/S	Pts.-Avg.	FG-A	3FG-A	FT-A	Reb.-Avg.	Ast.	Blk.	Stl.
4/0	6-1.5	3-7	0-0	0-2	7-1.8	2	1	1
		.429	.000	.000				

**Game 1 • Nov. 16, 2007**  
Lions 60, St. Edward's 39

AUSTIN, TEXAS -- The Missouri Southern Lions used a stifling defensive effort and a game-high 18 points from senior Robin Kantin (Silver Spring, Md.) to record a season-opening 60-39 win over the St. Edward's Hilltoppers at the St. Edward's Shootout Friday night (Nov. 16) in Austin, Texas.

MSSU took charge with a 9-0 run to begin the second to expand a seven-point edge into a 16-point cushion with 16:29 remaining in the game.

Whitney Regian sparked an 8-2 run for the Hilltoppers by hitting a pair of free throws and a three-pointer that cut the lead to 10 with 14:09 left.

The Lions responded with a 14-4 burst over the next 6:47 to go up by 20 at 48-28 with just 7:22 left. Trice Bonner (Mobile, Ala.) and India Wood (Decatur, Ala.) each scored five points in that span to key the big run. The Lions maintained at least a 15 point lead the remainder of the contest.

MSSU (1-0) scored the game's first five points and led 9-3 at the 13:38 point of the first half. The Hilltoppers (0-1) then hit six free throws, four by Regian to gain its only lead of the game at 10-9 with 9:56 remaining in the opening half.

The Lions' suffocating defense held St. Edward's to only one field goal in the first half on only 5.6 percent shooting (1-of-18). But turnovers and foul trouble led to the Hilltoppers making 13-of-22 from the charity stripe and trailing only 23-16 at the half.

Missouri Southern (1-0)

	FG	3-PT	FT	R	PF	A	TP
Marquez *	2-5	2-3	3-4	2	1	3	9
Hala'api'api *	1-2	0-0	1-2	3	4	1	3
Wood *	3-8	1-3	0-0	5	1	2	7
Kantin *	7-7	2-2	2-2	8	2	4	18
Zawadka *	0-2	0-1	0-0	0	2	0	0
Henderson	0-0	0-0	0-0	0	1	2	0
Bonner	3-5	1-1	4-4	5	4	0	11
DeVader	0-0	0-0	0-0	0	3	0	0
Helfrich	1-2	0-0	0-0	5	4	0	2
Pierce	5-9	0-1	0-1	6	3	1	10
TOTALS	22-47	6-11	10-13	38	25	13	60
	.550	.545	.769				

St. Edward's (0-1)

	FG	3-PT	FT	R	PF	A	TP
Bartosh *	1-3	1-2	3-6	3	2	2	6
Sumler *	1-4	0-1	1-6	0	3	0	3
Tidwell *	3-12	0-4	4-4	0	2	1	10
Head *	0-2	0-0	0-0	4	3	0	0
Regian *	1-4	1-2	8-9	5	1	0	11
Lara	0-1	0-0	0-0	1	1	0	0
Nagel	0-1	0-1	0-0	0	1	2	0
Etheridge	1-5	0-2	0-1	0	0	1	2
Payton	1-4	0-1	0-0	2	0	0	2
White	0-2	0-0	3-4	0	3	0	3
Starr	0-2	0-0	0-2	0	0	0	0
Rowland	1-1	0-0	0-0	0	0	0	2
Saathoff	0-1	0-0	0-0	0	1	0	0
TOTALS	9-42	2-13	19-32	18	17	6	39
	.214	.154	.594				

Halftime: MSSU 23, STEU 16; Turnovers: MSSU 28, STEU 19; Steals: MSSU 8 (Bonner 3), STEU 6 (Bartosh, Lara 2); Blocked Shots: MSSU 4 (Marquez, Kantin, Henderson, Helfrich), STEU 0.

**Game 2 • Nov. 17, 2007**  
Lions 52, Incarnate Word 43

Austin, Texas -- The Missouri Southern women's basketball team took a lead just two minutes into the second half on a layup from Tynesha Pierce and wouldn't trail then on out, defeating Incarnate Word today, 52-43 in the team's final game at the St. Edwards University Classic in Austin.

Southern (2-0) scored the game's first points on a bucket from Fatai Hala'Api'Api in the game's first possession.

A layup from UIW's (1-1) Kim Robinson at the 16 minute mark, however, gave the Cardinals a six point lead at 10-4.

The Lions re-took the lead at 21-20 on a layup from Robin Kantin with five minutes left. Three's from Danielle DeVader, first at the three minute mark and another with just over a minute left gave the Lions a one point advantage each time, however, a free throw from UIW's Kava Cinnamon with 22 seconds left, gave the Cardinals a one point lead at the half.

Pierce tied the game at 30 with a free-throw to start the second half and her bucket just two minutes in gave the Lions a lead they wouldn't relinquish. The lead was as big as 11, after a free throw from Trice Bonner with 22 seconds remaining, one of six she made in the final 46 seconds.

Missouri Southern (2-0)

	FG	3-PT	FT	R	PF	A	TP
Hala'api'api *	2-2	0-0	1-2	2	5	0	5
Zawadka *	2-4	0-2	1-2	2	0	0	5
Wood *	1-6	1-4	0-0	1	4	6	3
Marquez *	0-1	0-1	0-0	0	0	0	0
Kantin *	3-8	1-4	4-4	2	1	5	11
Henderson	0-0	0-0	0-0	2	0	0	0
Bonner	2-3	2-2	6-6	4	3	0	12
DeVader	2-5	2-5	0-0	5	1	2	6
Helfrich	0-1	0-0	0-0	6	4	0	0
Pierce	4-12	0-0	2-4	7	4	1	10
TOTALS	16-42	6-18	14-18	34	22	14	52
	.381	.333	.778				

Incarnate Word (1-1)

	FG	3-PT	FT	R	PF	A	TP
Harvey *	1-6	0-0	4-8	5	5	0	6
Hardy *	4-7	0-1	4-7	6	2	3	12
Robinson *	2-7	0-4	0-0	5	1	2	4
Torru *	4-13	1-7	0-0	4	2	3	9
Kava *	0-4	0-4	3-4	2	1	0	3
Sledge	0-1	0-1	0-0	2	1	1	0
Greenwood	1-3	1-2	1-2	1	1	0	4
Holden	2-2	0-0	1-2	1	3	0	5
TOTALS	14-43	2-19	13-23	28	16	9	43
	.326	.105	.565				

Halftime: UIW 30, MSSU 29; Turnovers: MSSU 18, UIW 13; Steals: UIW 6 (Harvey, Hardy 2), MSSU 5 (Helfrich 2); Blocked Shots: MSSU 2 (Hala'api'api, Pierce), UIW 2 (Harvey 2).

**Game 3 • Nov. 23, 2007**  
Lions 66, St. Mary's (Kan.) 29

Pittsburg, Kan. - The Missouri Southern Lions held the St. Mary's (Kan.) Spires to a four-percent (1-of-25) shooting percentage in the first half and rolled to a 66-29 win in action at the Pittsburg State Pizza Hut/Comfort Inn Classic Friday night (Nov. 23) in Pittsburg, Kan.

The Lions (3-0) roared out of the gate as seniors Fatai Hala'api'api (Maui, Hawaii) and Tynesha Pierce (Houston, Texas) combined for 14 points in a 15-0 MSSU spurt to begin the game.

The Spires' (3-3) followed that with their lone field goal of the first half that came on a jumper by Jamie Mireles at the 9:39 mark.

Southern then went on a 16-3 run that featured a pair of treys by Trice Bonner (Mobile, Ala.) that put the Lions on top 31-5 with 2:34 remaining in the first half.

The Lions went on to lead 38-7 at halftime

A three-pointer by Ivaney Marquez (Valencia, Venezuela) and a free throw from Fatai gave the Lions their largest lead to that point at 42-7 just 3:10 into the second half.

Katie Joens then scored seven points in a 9-4 St. Mary's run to pull the Spires within 30 with 13:47 left, but the Lions gained their biggest lead of the night with a 16-4 burst that was capped by a three-pointer from Bonner to go ahead 62-20 with 3:43 left.

Missouri Southern (3-0)

	FG	3-PT	FT	R	PF	A	TP
Marquez *	2-6	2-6	0-0	2	2	2	6
Pierce *	7-15	0-0	0-0	6	3	0	14
Wood *	2-7	0-2	1-1	3	1	1	5
Kantin *	2-11	0-1	1-3	8	0	5	5
Zawadka *	0-1	0-0	0-0	7	2	0	0
Henderson	0-3	0-1	0-0	3	0	4	0
Bonner	3-7	3-4	2-2	2	2	2	11
Johnson	2-3	0-1	0-0	0	1	0	4
Hala'api'api	6-11	0-0	7-8	12	0	0	19
DeVader	0-2	0-2	0-0	1	3	1	0
Helfrich	1-2	0-0	0-0	2	3	2	2
Vavao-Huggins	0-2	0-0	0-0	0	1	1	0
TOTALS	25-70	5-17	11-14	50	18	18	66
	.357	.294	.786				

St. Mary's (Kan.) (3-3)

	FG	3-PT	FT	R	PF	A	TP
Helm *	1-6	0-1	2-4	7	1	0	4
Leonard *	1-11	0-1	6-6	5	4	0	8
Teal *	0-1	0-0	0-0	1	0	0	0
Jacobs *	0-0	0-0	0-0	0	2	0	0
Gillispie *	0-5	0-4	0-0	2	2	0	0
Todd	0-0	0-0	0-0	1	1	0	0
Joens	2-5	1-2	4-4	1	3	2	9
Mireles	1-10	0-5	2-2	3	0	0	4
Shea	0-1	0-1	0-0	1	1	1	0
Packham	0-1	0-0	0-0	1	1	0	0
Garcia	2-9	0-0	0-0	7	1	0	4
TOTALS	7-49	1-14	14-16	38	16	3	29
	.326	.105	.565				

Halftime: MSSU 38, St.Mary's 7; Turnovers: St. Mary's 27, MSSU 14; Steals: MSSU 5 (Pierce 3), St.Mary's 3 (Leonard 2); Blocked Shots: MSSU 6 (Hala'api'api 5), St. Mary's 1 (Shea).

**Game 4 • Nov. 24, 2007**  
Lions 83, Quincy 51

Pittsburg, Kan. - Fatai Hala'api'api (Maui, Hawaii) shot a perfect 9-of-9 from the field and scored 19 points and pulled down 12 rebounds to lead the Missouri Southern Lions to a 4-0 start with an 83-51 win over the Quincy Lady Hawks in the final night of the Pittsburg State Pizza Hut/Comfort Inn Classic Saturday night (Nov. 24) in Pittsburg, Kan.

The game was close through much of the first half but the Lions took control with an 18-4 run to snap a 13-13 tie and surge ahead 31-17 with 34 seconds left in the first half.

India Wood (Athens, Ala.) and Danielle DeVader (Holton, Kan.) combined for 14 points during that span, with Wood hitting a trey and converting a three-point play and DeVader knocking in a pair of threes in that stretch. The Lions led 31-18 at the half.

MSSU expanded the lead in the second half behind a 61.3 percent (19-of-31) offensive explosion from the field.

The Lions outscored the Lady Hawks 19-10 to begin the second half and led 50-28 with 14:56 remaining after Fatai converted consecutive field goals.

Southern later went on a 10-0 run to turn a 20-point advantage into a commanding 66-36 lead with 8:52 left in the second half. The Lions then obtained their biggest advantage of the night when Robin Kantin (Silver Spring, Md.) hit from three-point distance to make it 71-37 just 1:51 later.

## Missouri Southern (4-0)

	FG	3-PT	FT	R	PF	A	TP
Pierce *	0-3	0-0	1-2	2	5	0	1
Hala'api'api	9-9	0-0	1-2	12	1	1	19
Wood *	5-10	1-3	2-3	6	1	3	13
Kantin *	4-11	2-4	4-4	4	2	2	14
DeVader *	3-5	3-5	0-0	1	3	1	9
Henderson	0-1	0-0	0-1	4	1	3	0
Bonner	2-9	1-3	1-2	4	1	2	6
Marquez	1-4	0-2	0-1	4	1	4	2
Johnson	1-2	0-0	0-0	0	0	0	2
Zawadka	5-10	3-7	0-0	2	0	3	13
Helfrich	1-2	0-0	0-0	5	3	1	2
Vavao-Huggins	1-1	0-0	0-0	3	1	0	2
TOTALS	32-67	10-24	9-15	53	19	20	83
	.478	.417	.600				

## Quincy (2-2)

	FG	3-PT	FT	R	PF	A	TP
Stellflue *	3-17	1-8	6-8	5	3	3	13
Burgin *	3-9	1-3	2-2	2	3	0	9
Young *	1-4	1-2	1-2	4	2	0	4
Irby *	1-7	0-1	0-0	6	1	3	2
Keller *	3-14	1-3	0-0	5	1	1	7
Gavlick	4-7	0-0	0-1	2	0	1	8
King	0-0	0-0	1-2	0	0	0	1
Lumley	0-0	0-0	0-0	0	0	0	0
Vaughn	0-3	0-0	0-0	0	0	0	0
Shuman	0-1	0-0	0-0	2	0	0	0
Ballenger	1-1	0-0	2-2	1	1	0	4
Koehler	1-4	0-0	1-4	6	1	0	3
TOTALS	17-67	4-17	13-21	38	12	8	51
	.254	.235	.619				

Halftime: MSSU 31, QU 18; Turnovers: MSSU 17, QU 13; Steals: MSSU 4 (Bonner 2), QU 4 (Keller 2); Blocked Shots: MSSU 4 (Hala'api'api 3), QU 3 (Keller 2).

**Game 5 • Nov. 28, 2007**  
Lions 86, Webster 36

Joplin, Mo. - Missouri Southern head coach Maryann Mitts won her 103rd game to move into second-place on the MSSU all-time wins list as the Lions defeated the Webster Gorloks 86-36 Wednesday night (Nov. 28) at the Leggett & Platt Athletic Center. The win moves the Lions to a perfect 5-0 on the season.

The outcome was never in doubt as the Lions scored the first eight points of the game behind five early points from Robin Kantin (Silver Spring, Md.).

MSSU later built the lead to 20 with a 15-2 run over a 5:15 span to lead 27-7 with 10:21 remaining in the first half.

After Julie McGirl made a layup to bring the Gorloks to within 18, the Lions ripped off an 8-0 spurt that was capped by an Ela Zawadka (Torun, Poland) layup to lead 35-9.

The Lions then out-scored Webster 11-5 over the next 4:29 as India Wood (Decatur, Ala.) converted a layup to put the Lions on top 46-14 with 1:11 left in the opening half. Southern would lead 46-16 at the half.

The second half would not be any different as Kantin scored five points to lead a 9-2 Southern run after halftime that made it 55-18 in favor of the Lions with 15:47 remaining.

The largest lead of the night came when Brittany Vavao-Huggins (Fayetteville, Ark.) hit a jumper with 1:57 remaining to give the Lions an 86-35 lead.

## Missouri Southern (5-0)

	FG	3-PT	FT	R	PF	A	TP
Wood *	4-6	0-1	0-0	2	0	3	8
Hala'api'api *	4-6	0-0	2-4	4	1	0	10
Kantin *	4-6	2-4	1-2	1	2	1	11
DeVader *	0-4	0-3	0-0	2	0	3	0
Pierce *	5-10	0-0	0-0	9	3	2	10
Henderson	1-3	0-2	0-0	0	4	2	2
Bonner	7-11	3-5	0-1	6	4	3	17
Marquez	3-9	2-5	0-1	5	1	1	8
Johnson	1-3	0-1	0-0	1	3	0	2
Zawadka	3-4	1-2	1-2	3	1	0	8
Helfrich	1-4	0-0	4-4	8	1	2	6
Vavao-Huggins	2-3	0-0	0-2	3	2	1	4
TOTALS	35-69	8-23	8-16	46	22	18	86
	.507	.348	.500				

## Webster (2-2)

	FG	3-PT	FT	R	PF	A	TP
McQueen *	0-4	0-2	2-2	6	2	6	2
McGill *	3-8	0-0	3-5	1	3	0	9
Goedeker *	0-1	0-0	0-0	1	3	0	0
Chesnek *	0-1	0-0	0-0	1	4	0	0
Meyer *	3-13	1-6	0-0	4	0	0	7
Venegoni	2-4	0-1	2-4	2	1	0	6
Wamser, R.	0-1	0-0	0-0	0	0	0	0
Martin	1-4	1-2	2-2	0	1	1	5
Wamser, J.	1-5	1-5	0-0	5	0	0	3
Vahey	0-3	0-0	1-4	5	1	2	1
VanGennip	0-0	0-0	1-4	1	0	2	1
Gellnett	1-2	0-0	0-0	1	0	0	2
TOTALS	11-46	3-16	11-21	34	15	9	36
	.239	.188	.524				

Halftime: MSSU 46, WU 16; Turnovers: WU 29, MSSU 14; Steals: MSSU 13 (Bonner 3), WU 2 (McQueen, VanGennip); Blocked Shots: MSSU 5 (Helfrich 2), WU 0.

**Game 5 • Nov. 28, 2007**  
Lions 86, Webster 36

Joplin, Mo. - Ivaney Marquez (Valencia, Venezuela) scored a career-high 16 points and the Missouri Southern Lions used another inspiring defensive performance to improve to 6-0 by defeating the St. Edward's Hilltoppers for the second time this season, 60-42 Saturday afternoon (Dec. 1) at the Leggett & Platt Athletic Center.

The Lions also knocked off the Hilltoppers 60-39 back on Nov. 16 at the St. Edward's Shootout in Austin, Texas in the season-opener for both squads.

Southern came out of the gates a bit sluggish, missing their first seven shots and falling into an early 7-0 hole with 14:01 left in the first half.

But Trice Bonner (Mobile, Ala.) knocked down a three-pointer for the Lions' first field-goal with 13:07 left in the half and that sparked a 7-0 Lions spurt that tied the game.

Tynesha Pierce (Houston, Texas) then hit her first two career three-pointers to lead a 13-5 run as the Lions jumped ahead 20-12 with 7:42 remaining in the first half.

The Lions led by as many as 10 in the opening half before taking a 31-23 advantage at halftime.

After the Hilltoppers trimmed the lead to 37-31, Marquez made three consecutive layups and contributed two steals as the Lions outscored STEU 8-0 over the next 3:06 to lead 45-31 with 10:45 left in the game.

The Hilltoppers (2-5) got no closer than 11 the rest of the way.

## Missouri Southern (6-0)

	FG	3-PT	FT	R	PF	A	TP
Wood *	0-4	0-2	0-2	0	2	4	0
Hala'api'api *	5-8	0-0	0-1	3	4	1	10
Kantin *	0-3	0-1	0-0	2	0	1	0
DeVader *	1-3	1-3	2-2	2	0	1	5
Pierce *	3-6	2-2	1-2	2	3	0	9
Henderson	2-2	0-0	0-0	0	3	3	4
Bonner	1-8	1-2	2-2	5	4	0	5
Marquez	7-10	1-3	1-3	7	2	2	16
Johnson	1-3	0-1	0-0	1	3	0	2
Zawadka	2-4	0-2	0-0	6	2	1	4
Helfrich	2-3	0-0	3-5	1	2	0	7
TOTALS	23-51	5-15	9-17	32	22	13	60
	.451	.333	.529				

## St. Edward's (2-5)

	FG	3-PT	FT	R	PF	A	TP
Bartosh *	1-7	0-2	4-8	5	2	2	6
Regian *	2-6	2-3	5-6	3	4	1	11
Sumler *	1-2	0-0	0-0	2	4	0	2
Tidwell *	3-11	2-5	6-8	3	1	0	14
Head *	0-4	0-0	5-6	10	5	1	5
Lara	0-0	0-0	0-0	1	0	0	0
Nagel	0-1	0-1	0-0	4	1	0	0
Etheridge	0-1	0-1	0-0	0	0	0	0
Payton	0-2	0-0	0-0	1	1	0	0
White	0-1	0-0	0-0	0	1	0	0
Starr	0-1	0-1	0-0	1	0	0	0
Rowland	0-1	0-0	0-0	1	0	0	0
Saathoff	2-6	0-0	0-0	3	1	0	4
TOTALS	9-43	4-13	20-28	38	20	4	42
	.209	.308	.714				

Halftime: MSSU 31, STEU 23; Turnovers: STEU 27, MSSU 18; Steals: MSSU 14 (Henderson 3), STEU 4 (Sumler, Tidwell 2); Blocked Shots: MSSU 6 (Hala'api'api 3), STEU 2 (Sumler, Rowland).

### Game 7 • Dec. 7, 2007 Lions 59, OPSU 44

Goodwell, Okla. - Robin Kantin went on a 7-0 run of her own in the second half to help vault the Missouri Southern Lions to a pivotal 59-44 regional win tonight at Oklahoma Panhandle State University.

Southern (7-0) fell down 7-0 early to the Lady Aggies, but a jumper from Tynesha Pierce put the Lions on the board.

A layup from OPSU's (4-4) Ro Wilson made the score 9-2, but jumpers from Fatai Hala'Api'Api and India Wood, as well as a three from Robin Kantin tied the game at nine at the 13 minute mark.

A three from Trice Bonner with 10 minutes left gave Southern its first lead of the game at 15-13 and a jumper from Ela Zawadka a minute later pushed the Lions' lead to 17-14 with 9:41 left. The Lady Aggies went on a 7-0 run behind a three from Sarah Polson and a jumper from Alisha Sladek, as well as a layup from Cherrelle Tillis, giving OPSU a 20-17 lead with 4:58 left.

After a Lady Aggie free throw, Kantin and Wood hit back-to-back jumpers to tie the game at 21 heading into the locker room at the half.

Wood put the Lions back on top hitting a jumper right out of the locker room to start the half. Back-to-back scores from Pierce extended the Lions' lead to 29-24 with 17:32 left in the game, but a three from Polson got the Lady Aggies back to within one, (29-28) with 16:37 left.

That would be as close as OPSU would get. A three from Kantin gave the Lions a nine point advantage (45-36) with 8:26 left and a three from Pierce just 26 seconds later made the lead 11. The Lions would lead by as much as 17 after a three from India Wood, her third of the game, made the score 59-42 with three minutes left.

#### Missouri Southern (7-0)

	FG	3-PT	FT	R	PF	A	TP
Wood *	6-11	3-7	0-0	9	0	3	15
Marquez *	0-4	0-0	0-0	5	1	1	0
Kantin *	6-15	3-10	3-6	3	2	4	18
Zawadka *	1-3	0-1	0-0	3	0	0	2
Pierce *	5-8	1-1	0-0	10	3	2	11
Henderson	1-1	0-0	0-0	0	1	1	2
Bonner	2-3	1-2	0-0	1	3	1	5
Hala'api'api	3-9	0-0	0-4	6	1	1	6
DeVader	0-4	0-4	0-0	2	3	3	0
Helfrich	0-2	0-0	0-0	1	4	1	0
TOTALS	24-60	8-25	3-10	45	18	17	59
	.400	.320	.300				

#### Okla. Panhandle State (4-4)

	FG	3-PT	FT	R	PF	A	TP
Sladek *	3-8	0-2	0-1	2	2	0	6
Polson *	2-10	2-9	0-0	9	4	1	6
Watkins *	1-1	0-0	1-1	1	1	0	3
Maas *	0-1	0-1	0-4	4	2	1	0
Wilson *	5-16	0-0	1-2	12	1	0	11
Terry	0-4	0-4	0-0	1	0	1	0
Cramer	0-0	0-0	0-0	0	1	0	0
Tillis	2-11	0-2	6-8	6	3	1	10
Brown	2-10	0-2	4-9	2	1	1	8
Ortega	0-0	0-0	0-0	0	0	0	0
Rogic	0-0	0-0	0-0	0	1	0	0
TOTALS	15-61	2-20	12-25	46	16	5	44
	.246	.100	.480				

Halftime: MSSU 21, OPSU 21; Turnovers: MSSU 18, OPSU 16; Steals: OPSU 11 (Polson, Tillis 3), MSSU 8 (Wood, Bonner 2); Blocked Shots: MSSU 7 (Hala'api'api 3), OPSU 0.

### Game 8 • Dec. 17, 2007 Lions 70, NSU 62

Tahlequah, Okla. - The No. 24-ranked Missouri Southern Lions used an inspired second half and held on to defeat the Northeastern State Riverhawks 70-62 to improve to a perfect 8-0 on the season Monday night (Dec. 17) in Tahlequah, Okla.

The first half was a see-saw affair and with Southern trailing 31-28, Trice Bonner knocked in a trey and converted two free-throws to give the Lions a 33-31 advantage at the break.

The Lions opened the second half on a 7-0 run to take a 40-31 lead. Tynesha Pierce hit a three-pointer and a layup and India Wood nailed a jumper in transition to key the spurt.

The Riverhawks' Verressa Gaston then converted a three-point play to cut the lead to 40-34, but Ela Zawadka put in one of her three treys on the night to put the Lions back up by nine at 43-34 with 14:58 left.

Southern later out-scored the Riverhawks (3-7) 10-4 over a stretch of 3:45 as Ivaney Marquez capped it with a three-pointer to give the Lions their largest lead of the night at 64-48 with 5:34 remaining in the game.

After the Riverhawks trimmed the lead down to nine, Bonner rebounded her own missed shot and hit a jumper to give the Lions a 68-57 lead with 1:34 left.

But NSU wasn't through as Katie Beshoner made a layup and Sarah Miller hit from long-range to make it 68-62 with 51 seconds remaining.

Wood then missed the front end of a one-on-one opportunity but Marquez made a critical steal on the defensive end and then knocked down a pair of big free throws that put the Lions up by the final margin of 70-62.

#### Missouri Southern (8-0)

	FG	3-PT	FT	R	PF	A	TP
Wood *	3-6	0-2	5-7	5	0	8	11
Kantin *	2-6	0-2	3-3	2	1	0	7
DeVader *	0-2	0-2	0-1	1	1	5	0
Helfrich *	2-3	0-0	0-0	2	3	0	4
Pierce *	4-5	1-2	0-0	1	5	0	9
Henderson	0-0	0-0	0-0	0	0	1	0
Bonner	4-7	1-4	2-4	4	3	2	11
Marquez	1-2	1-1	2-2	1	0	1	5
Hala'api'api	5-11	0-0	0-1	8	3	0	10
Zawadka	5-7	3-5	0-0	2	2	1	13
Davis	0-0	0-0	0-0	0	3	0	0
TOTALS	26-49	6-18	12-18	28	21	18	70
	.531	.333	.667				

#### Northeastern State (3-7)

	FG	3-PT	FT	R	PF	A	TP
Sams *	1-5	0-3	0-0	4	4	7	2
Quintana *	1-10	0-5	0-0	0	1	1	2
Gaston *	3-7	0-0	6-6	6	3	0	12
White *	1-3	1-2	5-6	1	1	3	8
Gordon *	4-6	0-0	0-0	3	2	0	8
Webb	3-4	0-0	0-0	3	3	1	6
Hunter	2-4	2-3	2-2	2	2	0	8
Barnhill	3-5	1-2	2-4	3	3	2	9
Millar	1-3	1-3	0-0	0	1	0	3
Jent	1-2	0-0	0-0	1	0	0	2
Beshoner	1-1	0-0	0-1	1	0	1	2
TOTALS	21-50	5-18	15-19	31	20	15	62
	.420	.278	.789				

Halftime: MSSU 33, NSU 31; Turnovers: NSU 16, MSSU 14; Steals: MSSU 9 (Bonner 3), NSU 3 (Sams, Gordon, Webb); Blocked Shots: MSSU 2 (Bonner, Hala'api'api), NSU 0.

### Game 9 • Dec. 19, 2007 Lions 79, Evangel 62

Joplin, Mo. - Fatai Hala'Api'Api and Tynesha Pierce combined for 44 points to lead the No. 23-ranked Missouri Southern Lions to a 79-62 win over the Evangel Lady Crusaders in their non-conference finale Wednesday night (Dec. 19) at the Leggett & Platt Athletic Center.

The 23rd ranked Lions finish the non-conference portion of their schedule at 9-0, including a perfect 6-0 in the South Central Region.

The Lions led throughout and gained their largest lead of the night as India Wood knocked in a three-pointer to put Southern up 54-36 with 14:02 remaining in the game.

Evangel (2-7) fought back and out-scored the Lions 7-0 over the next 2:41 to come within 54-43 on a trey from Katie Burger.

Southern then gained more breathing room with a 16-10 run and jumped back ahead 70-53 after a pair of free throw by Fatai with 4:25 remaining.

The Lady Crusaders would not go away though and went on a 7-1 spurt that was sparked by five points from Megan Jewell to claw back within 71-60 with 2:42 left in the contest.

But Fatai helped Southern put it away with six points over the next 2:11 as the Lions ended the game on an 8-2 run.

The Lions jumped on Evangel early by scoring 13 of the game's first 15 points as Ela Zawadka knocked in a three and made two jumpers in that span that helped the Lions lead 13-2.

Southern led by as many as 17 on two occasions in the first half, with the last coming after two free throws from Fatai put the Lions up 39-22 with 2:17 left in the first half.

The Lions went on to lead 42-28 at the half.

#### Missouri Southern (9-0)

	FG	3-PT	FT	R	PF	A	TP
Wood *	2-6	1-2	5-10	1	1	9	10
Marquez *	1-7	0-2	0-0	6	4	4	2
DeVader *	1-2	1-2	0-0	2	3	2	3
Helfrich *	1-2	0-0	0-0	3	4	2	2
Pierce *	7-14	0-1	3-3	10	3	2	17
Henderson	1-1	0-0	0-0	1	0	0	2
Bonner	1-4	0-2	0-0	1	1	1	2
Hala'api'api	9-15	0-0	9-10	3	2	0	27
Zawadka	5-8	1-2	1-2	2	2	0	12
Davis	0-1	0-0	2-4	0	1	2	2
Vavao-Huggins	0-1	0-0	0-0	1	1	0	0
TOTALS	28-61	3-11	20-29	31	22	22	79
	.459	.273	.690				

#### Evangel (2-7)

	FG	3-PT	FT	R	PF	A	TP
Hargus *	2-8	2-5	2-2	3	1	0	8
Burger *	3-4	1-1	2-2	5	3	0	9
Mingus *	2-6	1-2	2-2	0	1	1	7
Prentice *	0-2	0-0	0-0	2	1	0	0
Luko *	2-3	0-0	2-2	2	3	2	6
Haraldson	1-1	0-0	2-2	1	2	0	4
Michener	1-1	0-0	1-2	0	2	0	3
Russell	1-3	0-2	2-2	2	2	0	4
Jewell	2-5	2-2	10-10	3	2	3	16
Hogan	2-3	1-2	0-0	3	3	2	5
Pollard	0-0	0-0	0-0	0	4	0	0
TOTALS	16-36	7-14	23-24	29	24	8	62
	.444	.500	.958				

Halftime: MSSU 42, EU 28; Turnovers: EU 23, MSSU 9; Steals: MSSU 9 (Wood, Marquez, DeVader 2), EU 0; Blocked Shots: MSSU 3 (Hala'api'api 2), EU 0.